

## Joining Instructions



### Directions to the NobleAdvances

**Course Title:** *IADC DEC Q2 Tech Forum: "The One Rig Approach: Driving Peak Performance Through Interoperability"*

**Session Dates:** June 2<sup>nd</sup>, 2026

**Session Location:** NobleAdvances, 2101 CityWest Blvd, Suite 600, Houston, Texas 77042, USA

\*\*\*\*\*See the page 2 & 3 of this document for directions to the building and parking directions. \*\*\*\*\*

---

#### Arrival & Parking Instructions

- Please use the **guest entrance** at **2101 CityWest Blvd.**
- Inform the **security guard** that you are a guest of Noble to gain access to on-site parking.
- Enter the building via the **second-floor entrance.**
- At the end of the corridor, please check in with the **receptionist** to receive your guest badge.
- Feel free to wait in the coffee area on the second floor. A NobleAdvances team member will meet you there and escort you to the training room.

---

#### Session Hours

- Tuesday, June 2<sup>nd</sup> 2026
- **Start:** 8:00 a.m.
- **Networking Break:** 10:00 a.m.
- **Networking Lunch (Optional):** 12:00 p.m. – 1:30 p.m.

---

#### Meals Provided

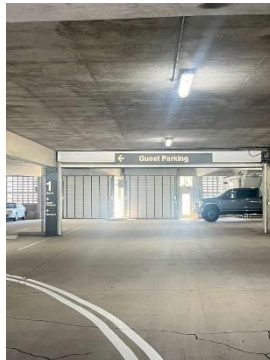
- **Coffee / Water**
  - **Lunch and snacks** will be provided during the session
-

**Directions and Instructions for Entering NobleAdvances by Car:**

- Use the entrance on CityWest Blvd.

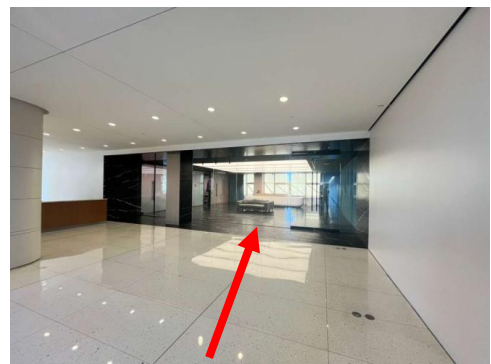


1. Enter through CityWest Blvd (Guest Entrance).



2. Inform security that you are a guest of Noble Corporation, and follow the directions to park in the guest parking area on the second floor.

3. Enter the guest entrance on the second floor through the double doors. Walk down the hallway and check in at the large glass door reception area where a badge will be assigned to you.



**Directions and Instructions for Entering NobleAdvances if walking:**

- Use the entrance on CityWest Blvd.



1. Enter through the CityWest Blvd guest entrance.



2. Inform security that you are a guest of Noble Corporation. Proceed up the ramp and enter through the glass door on the right.

3. Check in at the large glass door reception area where a badge will be assigned to you.

