



Casing Operations Guidelines



Table of Contents

1	Purpose.....	2
2	Guideline Development Participants.....	2
3	General Best Practices.....	3
4	Staging and Preparation.....	5
5	Pre-Inspection/Rig Up/Rig Down	8
6	Running Casing.....	12
	Appendix A: Examples of CRT Securement.....	14

Purpose

Casing operations present unique risks as they involve numerous companies playing specific roles in those operations. This document is intended to provide guidance and recommend practices to companies in the energy sector with a goal of improving safety for casing operations. This document was created by the IADC Health, Safety, Environment & Training (HSET) Committee and is intended to be updated regularly to reflect changes in technology and processes. Please ensure the latest revision is utilized by referencing the document directly from the IADC website.

Guideline Development Participants

Company	Participant	Company	Participant
4-Star	Pedro Rios	Independence Contract Drilling	Phil Dalrymple
Devon	Laura Wright	Independence Contract Drilling	Matthew Law
Devon	Lane Frank	OES	Ross Dudney
Ensign	Jason Jensen	OES	Andy Montemayor
Ensign	Jason Adams	OES	Bill Hobson
EOG	Clint Anderson	Patterson-UTI Drilling	Ryan Smallwood
H&P	Micah Backlund	Precision Drilling	Ryan D'Aunoy
H&P	Ken Bailey	Precision Drilling	Jay Brosseau
H&P	Josh Muniga	Precision Drilling	Dan St. George
H&P	Kenneth Pesek	Tenaris	Reese Wachel
H&P	Rachel Nolen	Tenaris	Michael Zuri
Independence Contract Drilling	Mike Truitt	Tenaris	Tim Poff

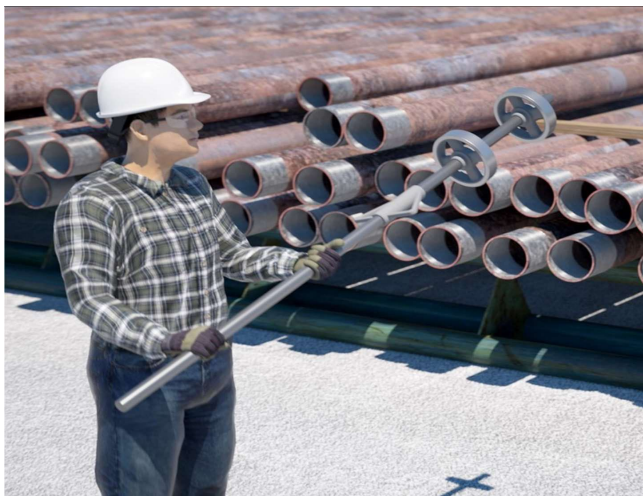
General Best Practices

Equipment can fail and parts may fall. Use these best practices to prevent injuries, incidents, and fatalities by maintaining awareness of your surroundings. When failures happen, these practices will help everyone fail safely. Apply the following recommendations consistently throughout the casing running process.

- Stay out from under suspended loads.
- Honor barricades and buffer zones.



- Use hands-free tools/techniques when available.

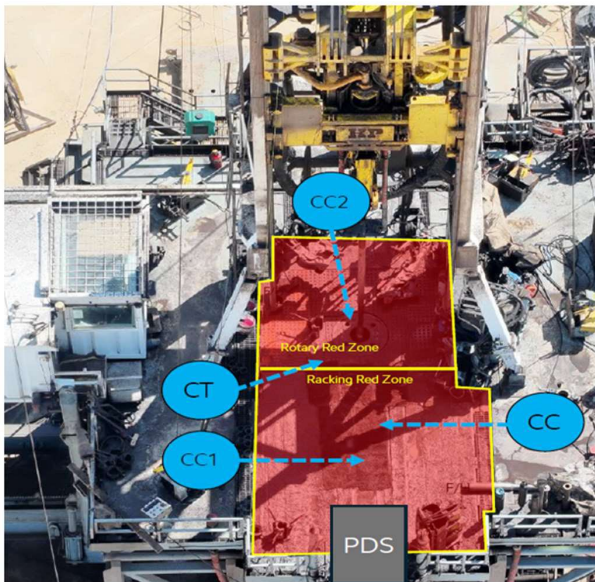


- Use purpose-built master bushing pullers to remove master bushings from the rotary table, and remove the inner bushings before pulling the outer bushings to mitigate hazards.



- Keep off the rig floor unless necessary.

Redzone Management – Rig Floor



Running Casing

Personnel Positioning
While Handling Tubulars

Who enters: Authorized Casing Crew Members

When to be in/out:


- As elevators downwardly (in motion) pass the lowest girt in the derrick above the Drawworks.
- As elevators upwardly pass (in motion) the lowest girt in the derrick above the Drawworks.

Where to position:

- ODS of Racking Red Zone to tail tubulars.
- Near Rotary to assist stabbing joint.
- At casing string to make up with tongs.
- Avoid area between stump and catwalk/V-door.

**Adapt to hazards that may not be represented*



CC1: Casing Crew
CC2: FMS and Fill-up CC Member
CT: Casing Tong Operator
 : Area personnel move to after immediate task fulfill

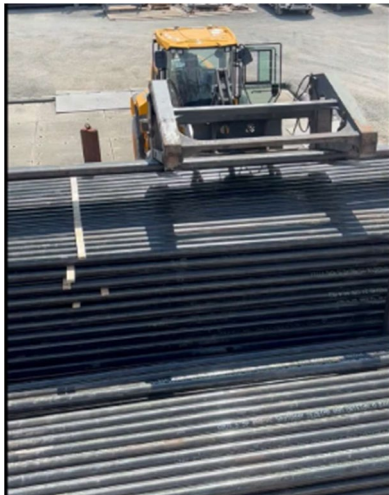
- Do not turn your back to the v-door or moving equipment.

Staging and Preparation

- Use a straight line painted on the ground or other visual indicator to ensure the casing is offloaded and aligned with the Pipe Delivery System (PDS) to reduce or eliminate the need to manipulate the casing by hand.



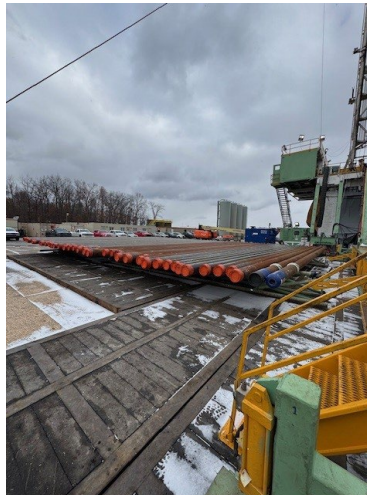
- For external casing running tools, scribe pipe as early as practically possible.
- Forklifts should utilize a top grip loader (grapple), which is the preferred method.



- Angle the rack downward so the first load rolls on easily, then shim and adjust from there.



- Do not rack casing higher than the shortest available pipe stop (shortest racks possible).



- Employ hands-free methods when rolling (see provided examples).



- Establish buffer zones and barricades.
- Fully make up thread protectors.

Pre-Inspection/Rig Up/Rig Down

- The Subject Matter Expert (SME) responsible for each specific piece of equipment should inspect all casing equipment per applicable inspection requirements prior to staging for hoisting to the floor.
- Measure the Inside Diameter (ID) and Outside Diameter (OD) to ensure the casing collar is the correct size so it does not slip or fall through the lifting equipment (elevators).

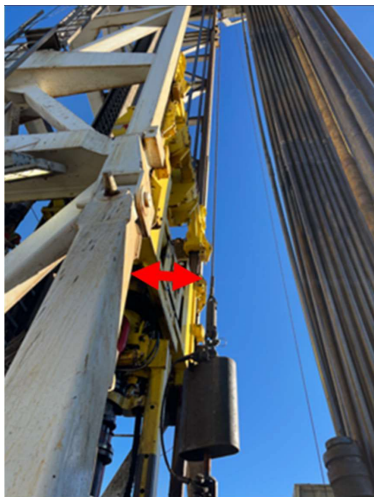


- Use appropriate pick points and laydown line to transport casing equipment to rig floor to minimize damage.
- A Pick Up/Lay Down line should be utilized when hoisting or lowering equipment from the Pipe Delivery System (PDS) deck or catwalk. Do not drag equipment up or down the v-door.
- All connections between the saver sub and the Casing Running Tool (CRT) should be torqued and scribed.

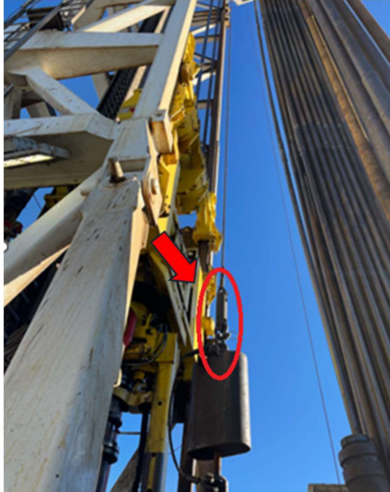




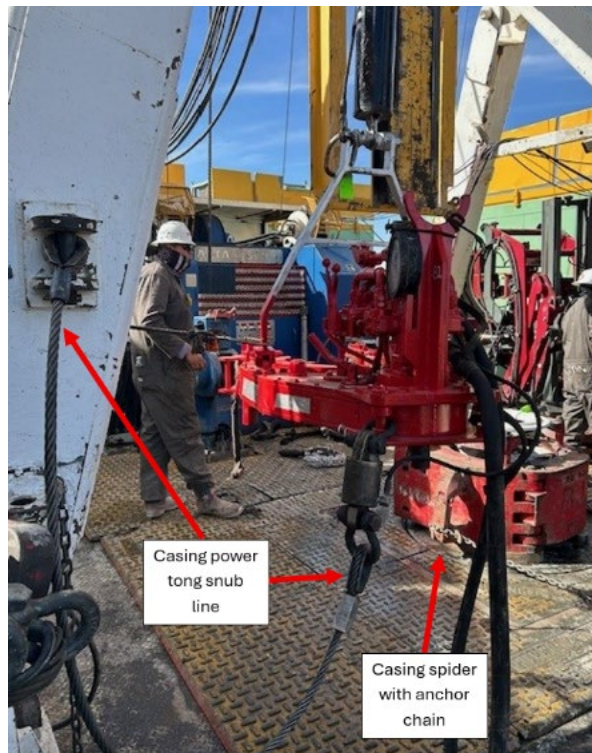
- CRT securement - consult with your operator and casing tool provider to ensure proper retention according to Original Equipment Manufacturer (OEM) specifications.
- Rig up tong hang-off lines outside the travel path of the traveling equipment.



- Connect the swivel directly to the tongs to prevent being struck by tongs due to trapped torque.



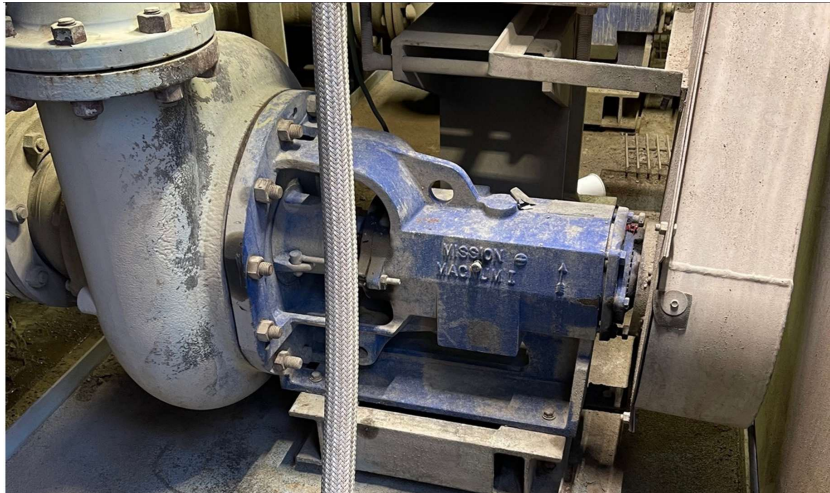
- Verify proper snub lines for tongs (ensure proper snub line length, rating, and condition).



- Agree on the best placement for securing/positioning the tail rope.



- Utilize a low-pressure centrifugal pump for casing fill up when not using a CRT (with proper fitting). Ensure all related hoses and fittings are rated for the pump output.



Running Casing

- Driller, Casing Supervisor, and Company Representative must confirm OD/ID casing and elevator compatibility at the v-door before latching the first stand.



- Perform a secondary visual check from the rig floor after latching the first joint.
- Maintain line-of-sight and communication with personnel latching pipe, the catwalk operator, and the driller. Establish a flagger, if unable to maintain clear line of sight.



- The Driller should receive confirmation that the elevators are properly latched prior to hoisting.
- Remain out of the line-of-fire from casing tongs and rig tongs.



- Transport thread protectors off the rig floor in a controlled manner to prevent dropped objects; never throw them off the rig floor.

Appendix A: Examples of CRT Securement



NOTICE

This document was designed by the IADC HSE&T Committee for the purpose of providing members guidance in best practices for casing operations.

This document is designed for the end user, with no intention for it to be used by those offering fee-based consulting or other services.

The information contained in this document is a compilation of research, members' views, and success and failures in casing operations. The content represents the views of IADC member companies who contributed to the content's development.

Copyright © 2025 International Association of Drilling Contractors



INTERNATIONAL ASSOCIATION OF DRILLING CONTRACTORS

3657 Briarpark Drive, Suite 200
Houston, Texas 77042

PHONE: +1.713.292.1945
WEBSITE: <http://www.iadc.org>
