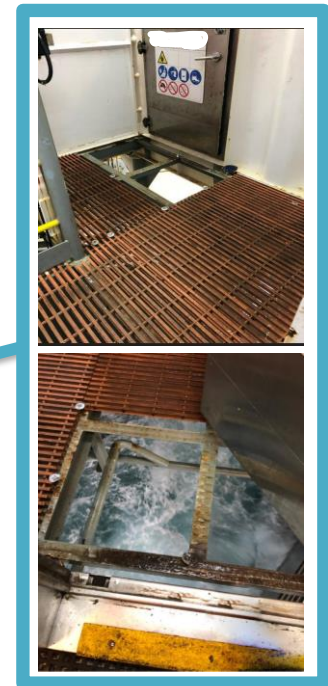


## WHAT HAPPENED:

While a jackup rig was being wet towed, a section of deck grating located immediately outside an egress point from the Living Quarters was found to have been dislodged under the action of the waves being forced up the side of the hull. The dislodged grating was part of a platform located directly over water, more than 20 ft. above the rig's floating draft. The sea state recorded at the time showed 8-10 ft. significant wave height.



## Contributing Factors

Design – Since the original design and construction of the rig, the GRP (glass fiber reinforced plastic) grating, and fasteners used in this area were not expected to be subject to wave action. While the dislodged section of grating was found essentially intact, it had been evidently forced up from its fasteners by the wave run-up.

## LESSONS LEARNED:

1. The company undertook a review of all similar grated platforms across its jackup fleet and decided to replace all GRP grating and fasteners in areas directly over water and located at an elevation below the rig's life boat platforms. The GRP grating was replaced with steel grating and fasteners with specification and quantities to resist wave action.
2. Also, the company is collaborating with the competent authorities to determine whether construction standards for this type of structure need to be revised.