



# IADC ISP Program 2021

SUMMARY OF  
OCCUPATIONAL INCIDENTS

*Issued 15 June 2022*

# US Water Totals

# IADC ISP Program 2021: Summary of Occupational Incidents (US Water Totals)

## TABLE OF CONTENTS

<i>ISP 2021 US Water Totals (Table 1)</i> . . . . .	2
<i>US Water Total Incidence Rates vs Man-hours (Figure 1)</i> . . . . .	2
<i>IADC 2021 US Water Charts</i> . . . . .	3
<i>US Water Total Lost Time Incidents by Month (Chart 1)</i> . . . . .	3
<i>US Water Total Recordable Incidents by Month (Chart 2)</i> . . . . .	3
<i>US Water Total Lost Time Incidents by Occupation (Chart 3)</i> . . . . .	4
<i>US Water Total Recordable Incidents by Occupation (Chart 4)</i> . . . . .	4
<i>US Water Total Lost Time Incidents by Body Part (Chart 5)</i> . . . . .	5
<i>US Water Total Recordable Incidents by Body Part (Chart 6)</i> . . . . .	5
<i>US Water Total Lost Time Incidents by Incident Type (Chart 7)</i> . . . . .	6
<i>US Water Total Recordable Incidents by Incident Type (Chart 8)</i> . . . . .	6
<i>US Water Total Lost Time Incidents by Equipment (Chart 9)</i> . . . . .	7
<i>US Water Total Recordable Incidents by Equipment (Chart 10)</i> . . . . .	7
<i>US Water Total Lost Time Incidents by Operation (Chart 11)</i> . . . . .	8
<i>US Water Total Recordable Incidents by Operation (Chart 12)</i> . . . . .	8
<i>US Water Total Lost Time Incidents by Location (Chart 13)</i> . . . . .	9
<i>US Water Total Recordable Incidents by Location (Chart 14)</i> . . . . .	9
<i>US Water Total Lost Time Incidents by Time in Service (Chart 15)</i> . . . . .	10
<i>US Water Total Recordable Incidents by Time in Service (Chart 16)</i> . . . . .	10
<i>US Water Total Lost Time Incidents by Time of Day (Chart 17)</i> . . . . .	11
<i>US Water Total Recordable Incidents by Time of Day (Chart 18)</i> . . . . .	11
<i>US Water Total Lost Time Incidents by Age (Chart 19)</i> . . . . .	12
<i>US Water Total Recordable Incidents by Age (Chart 20)</i> . . . . .	12
<i>IADC 2021 US Water Participant Detail by Category (Table 2)</i> . . . . .	13

IADC ISP Program 2021  
Issued 15 June 2022

International Association of Drilling Contractors  
3657 Briarpark Drive #200  
Houston, Texas 77042, USA

Copyright © 2022 International Association of Drilling Contractors (IADC), Houston, Texas USA.  
All rights reserved. No part of this publication may be reproduced or transmitted in any form, whether printed or electronic, without the prior written permission of the publisher.

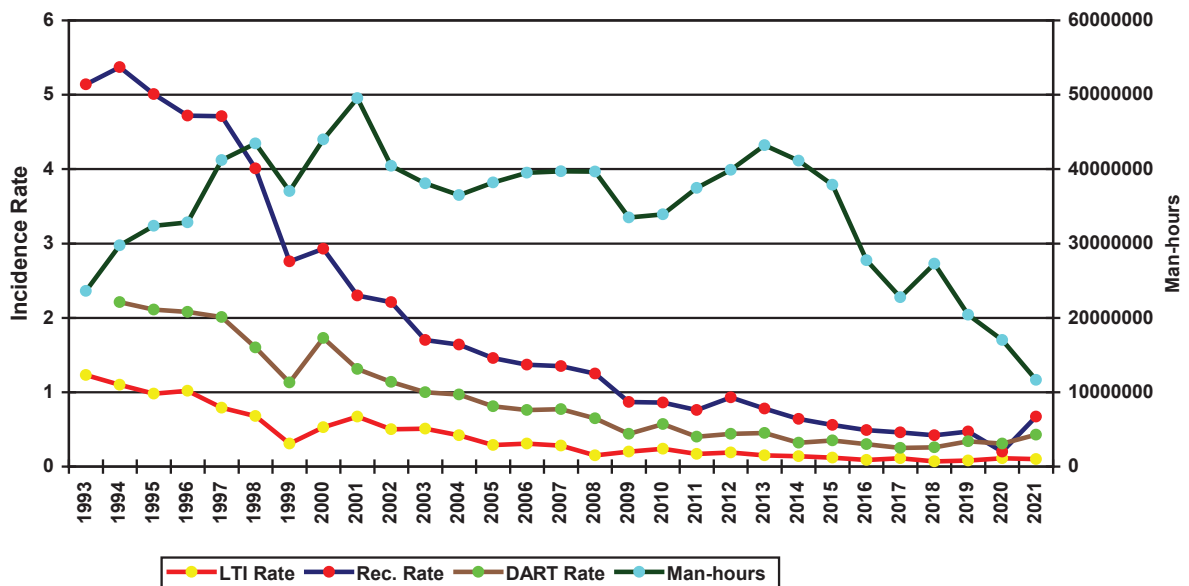
# ISP 2021 US Water Totals (Table 1)

	TOTAL
TOTAL MAN-HOURS	11,666,529
TOTAL MEDICAL TREATMENT INCIDENTS	14
TOTAL RESTRICTED WORK INCIDENTS	19
TOTAL LOST TIME INCIDENTS	6
TOTAL FATALITIES	0
TOTAL RECORDABLES	39
MTO INCIDENCE RATE	0.24
RWC INCIDENCE RATE	0.33
LTI INCIDENCE RATE	0.10
LTI FREQUENCY RATE	0.51
DART INCIDENCE RATE	0.43
DART FREQUENCY RATE	2.14
RECORDABLE INCIDENCE RATE	0.67
RECORDABLE FREQUENCY RATE	3.34

### Companies Reporting: Water - 11

MEDICAL TREATMENT INCIDENCE RATE = MTOs X 200,000 / MAN-HOURS (LTIs NOT INCLUDED)  
 RESTRICTED WORK INCIDENCE RATE = RWCs X 200,000 / MAN-HOURS (LTIs NOT INCLUDED)  
 LOST TIME INCIDENCE RATE = (LTIs+FTLs) X 200,000 / MAN-HOURS  
 LOST TIME FREQUENCY RATE = (LTIs+FTLs) X 1,000,000 / MAN-HOURS  
 DART INCIDENCE RATE = (LTIs+FTLs+RWCs) X 200,000 / MAN-HOURS  
 DART FREQUENCY RATE = (LTIs+FTLs+RWCs) X 1,000,000 / MAN-HOURS  
 RECORDABLE INCIDENCE RATE = RECORDABLES X 200,000 / MAN-HOURS  
 RECORDABLE FREQUENCY RATE = RECORDABLES X 1,000,000 / MAN-HOURS

US Water Total Incidence Rates vs Man-hours (Figure 1)



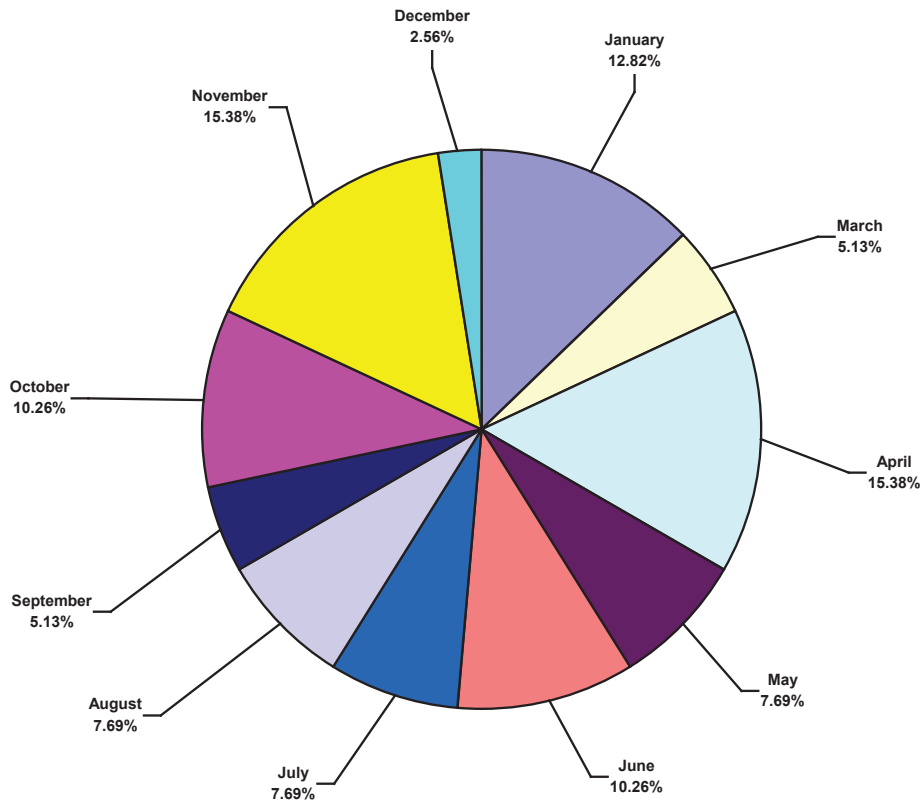
# IADC 2021 US Water Charts

Note: There were only six Lost Time Incidents recorded for 2021, therefore there will not be any charts

## US Water Total Recordable Incidents by Month (Chart 1)

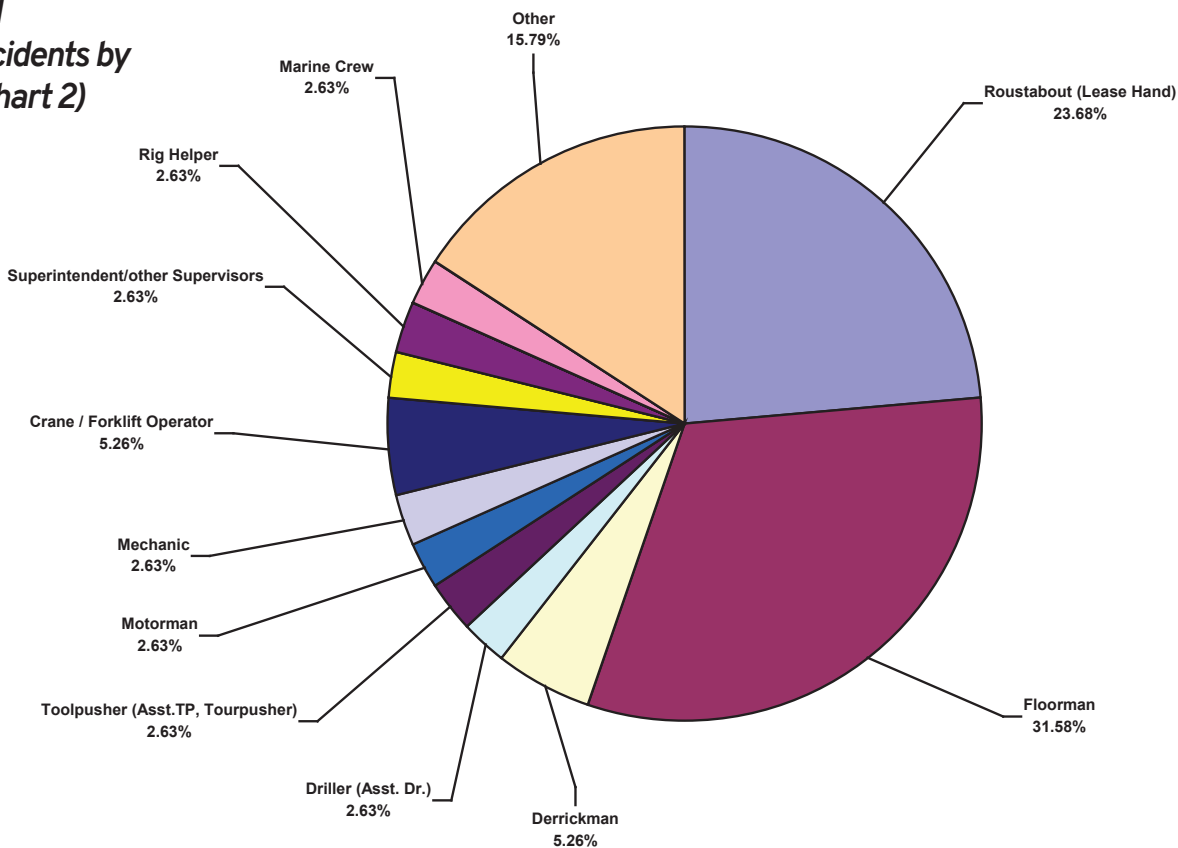
Based on 39 Incidents

Note: Some pie charts may not appear to show all the slices due to the small percentage the slice represents.



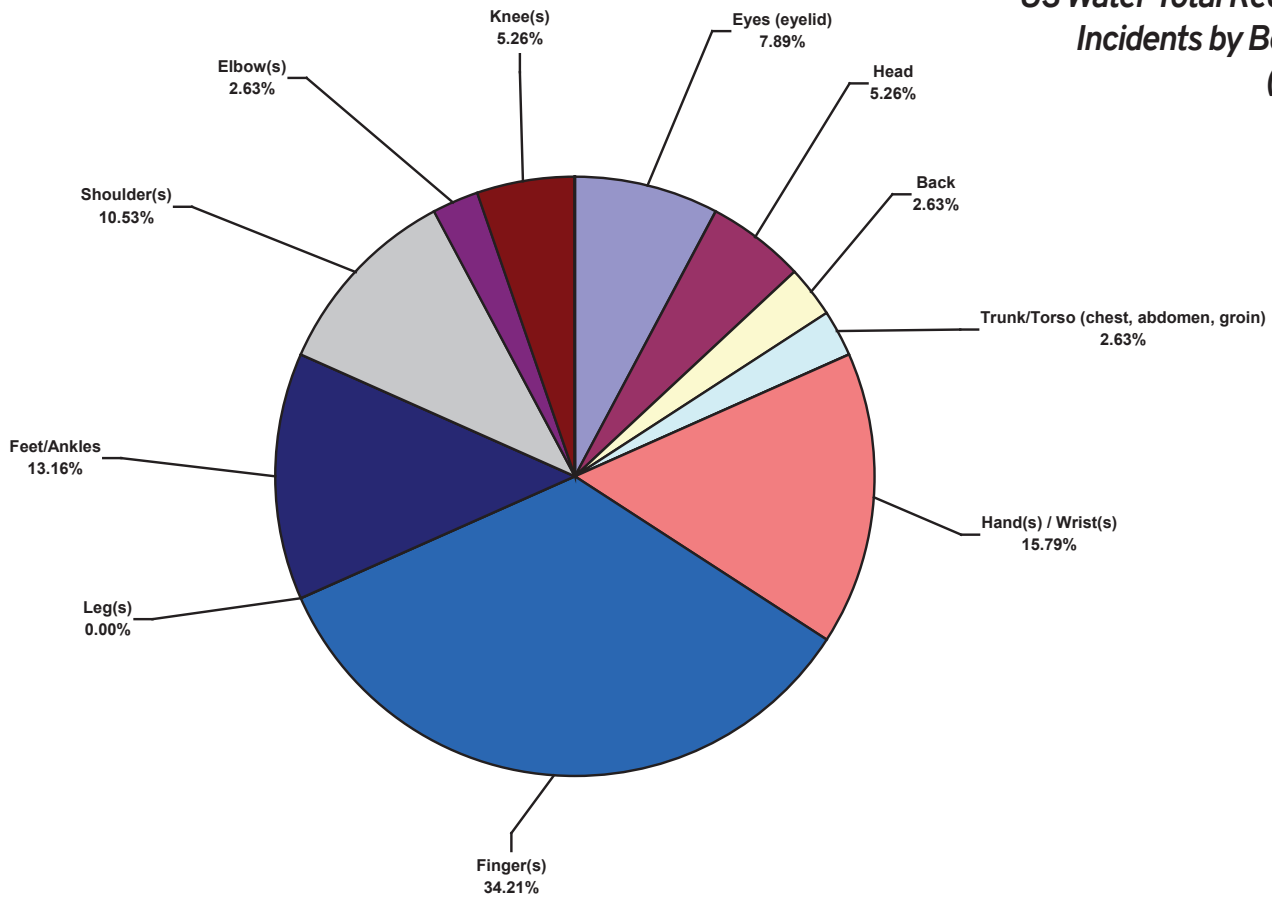
## US Water Total Recordable Incidents by Occupation (Chart 2)

Based on 38 Incidents



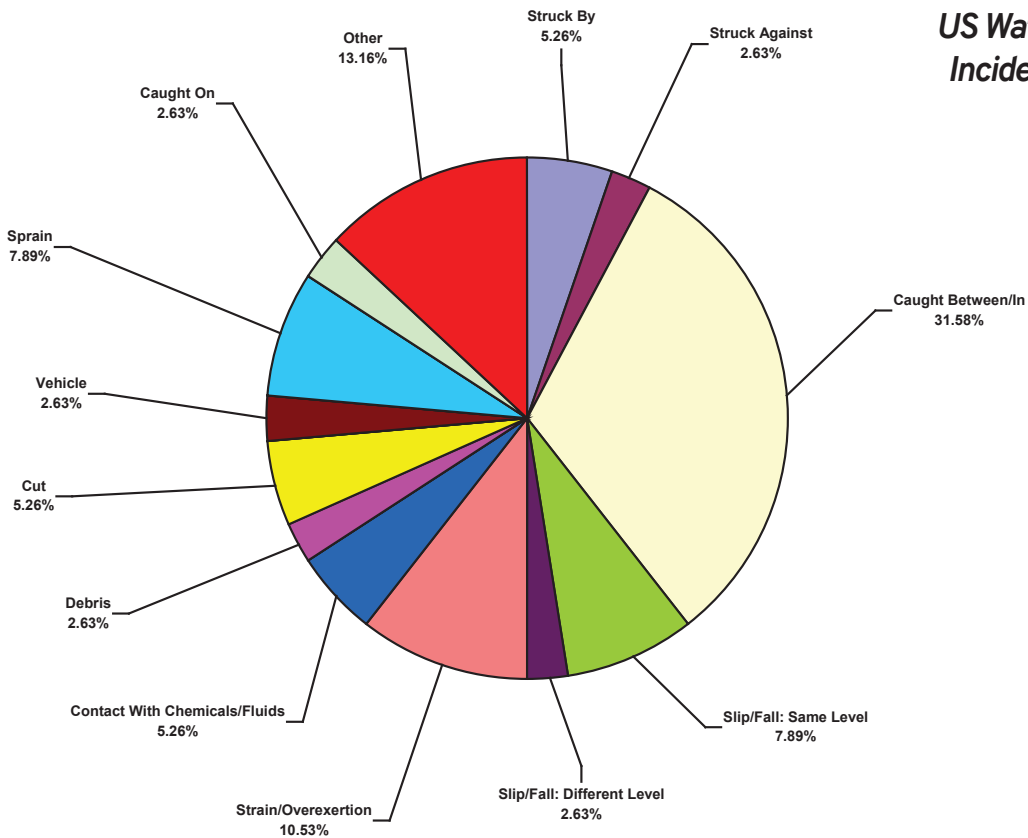
**US Water Total Recordable Incidents by Body Part (Chart 3)**

Based on 38 Incidents



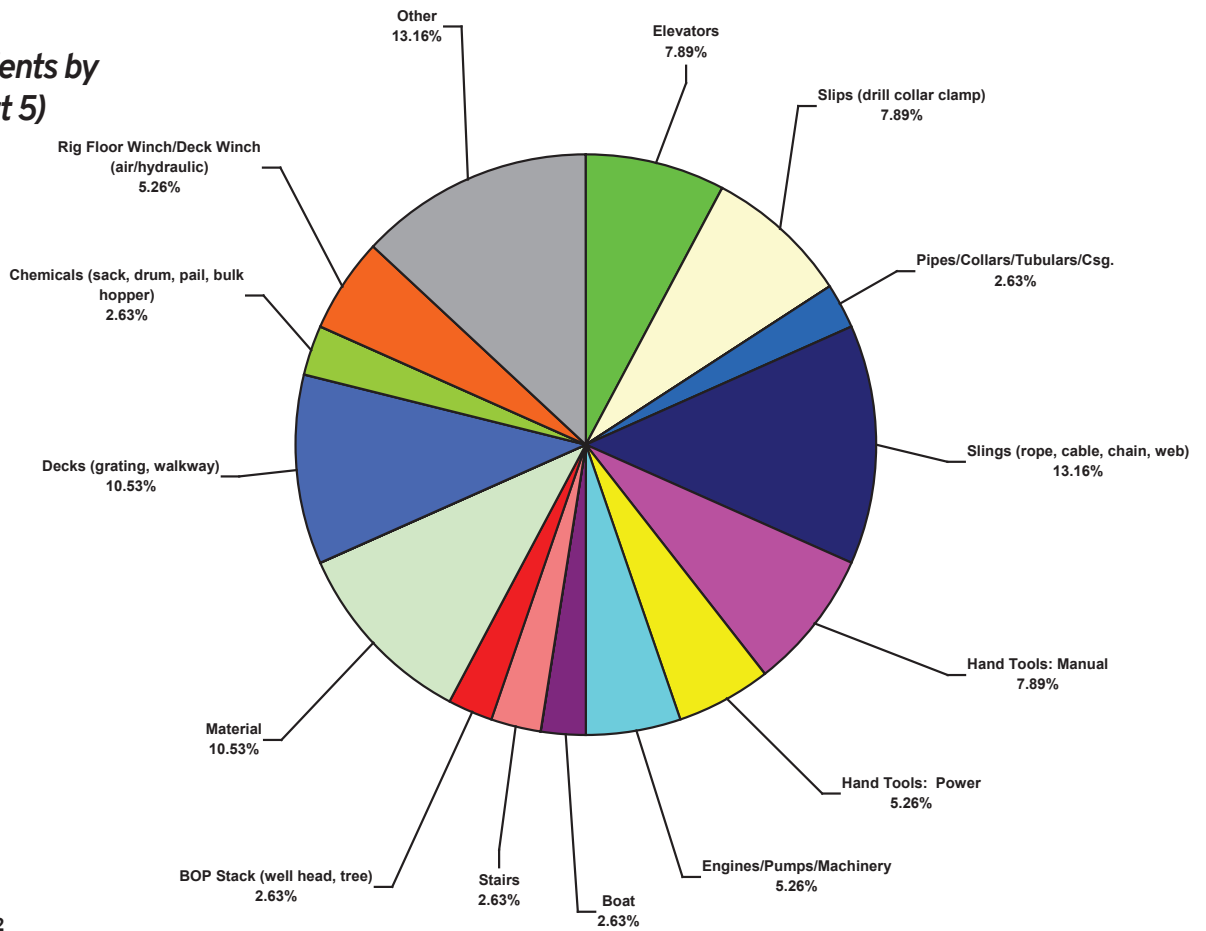
**US Water Total Recordable Incidents by Incident Type (Chart 4)**

Based on 38 Incidents



**US Water Total Recordable Incidents by Equipment (Chart 5)**

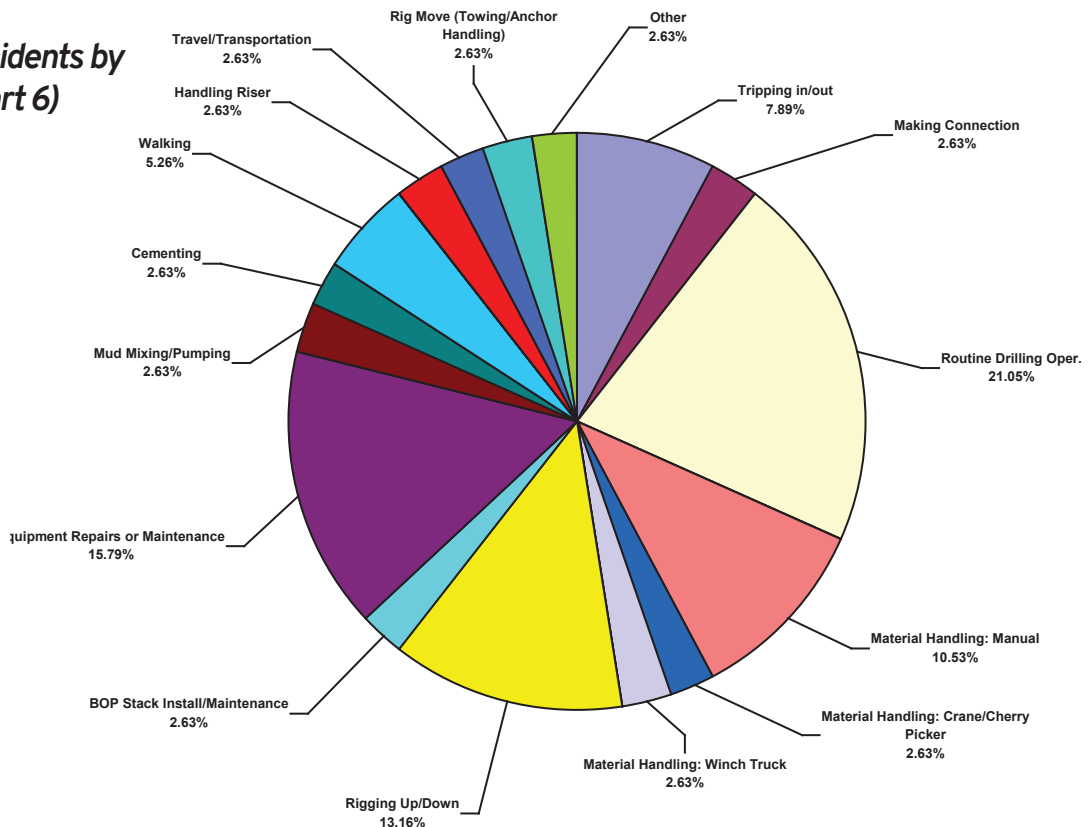
Based on 35 Incidents



ie 2022

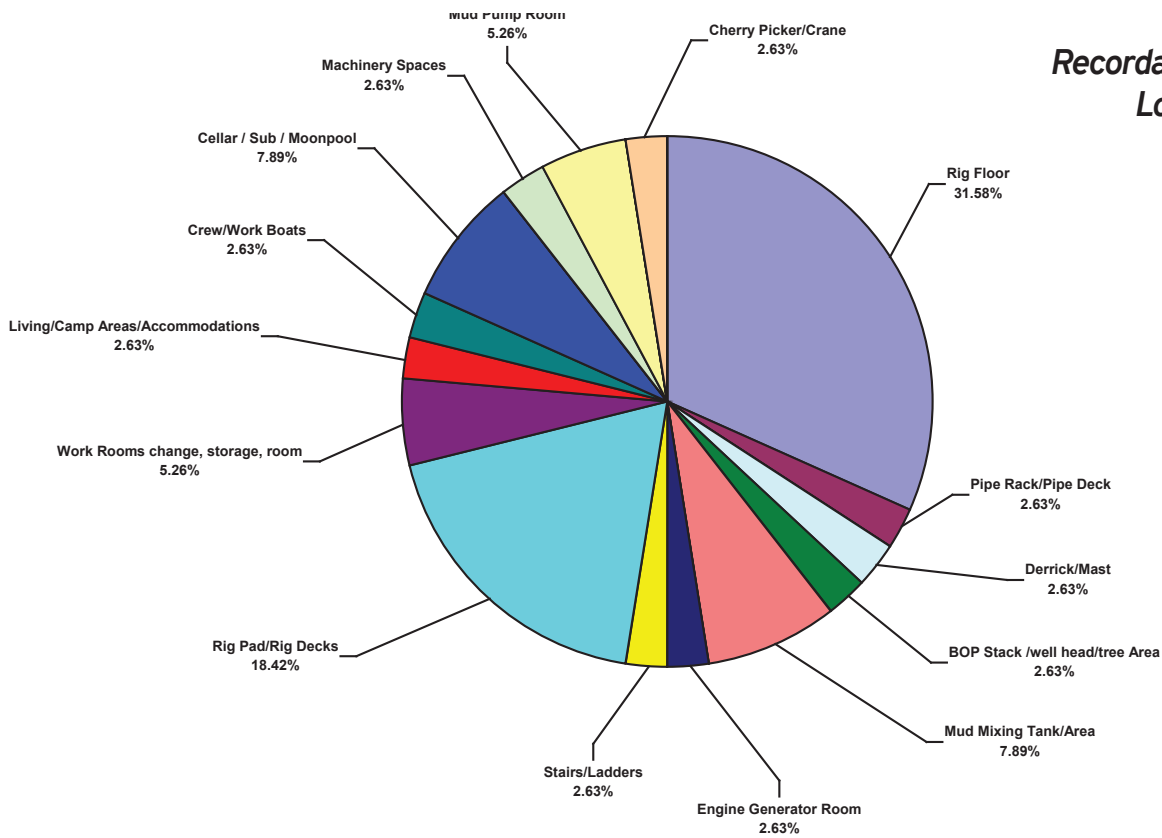
**US Water Total Recordable Incidents by Operation (Chart 6)**

Based on 38 Incidents



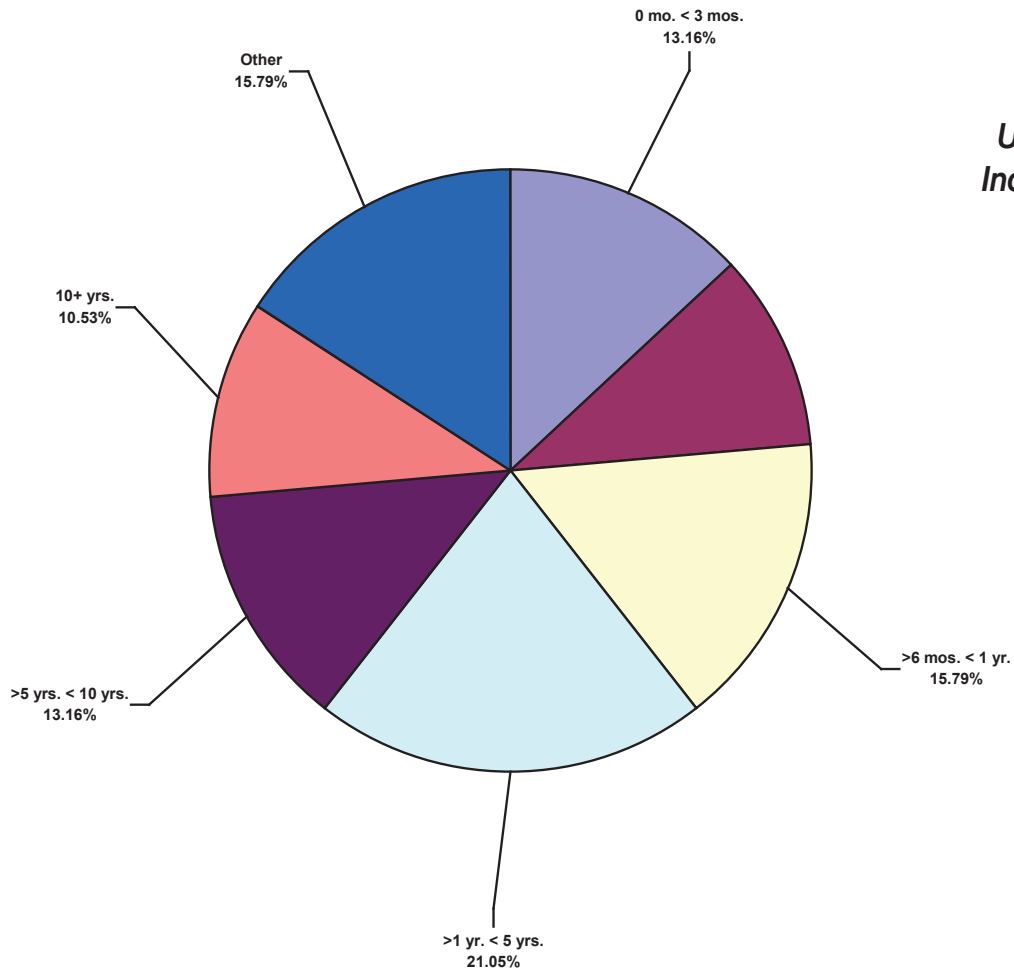
**US Water Total Recordable Incidents by Location (Chart 7)**

Based on 8 Incidents



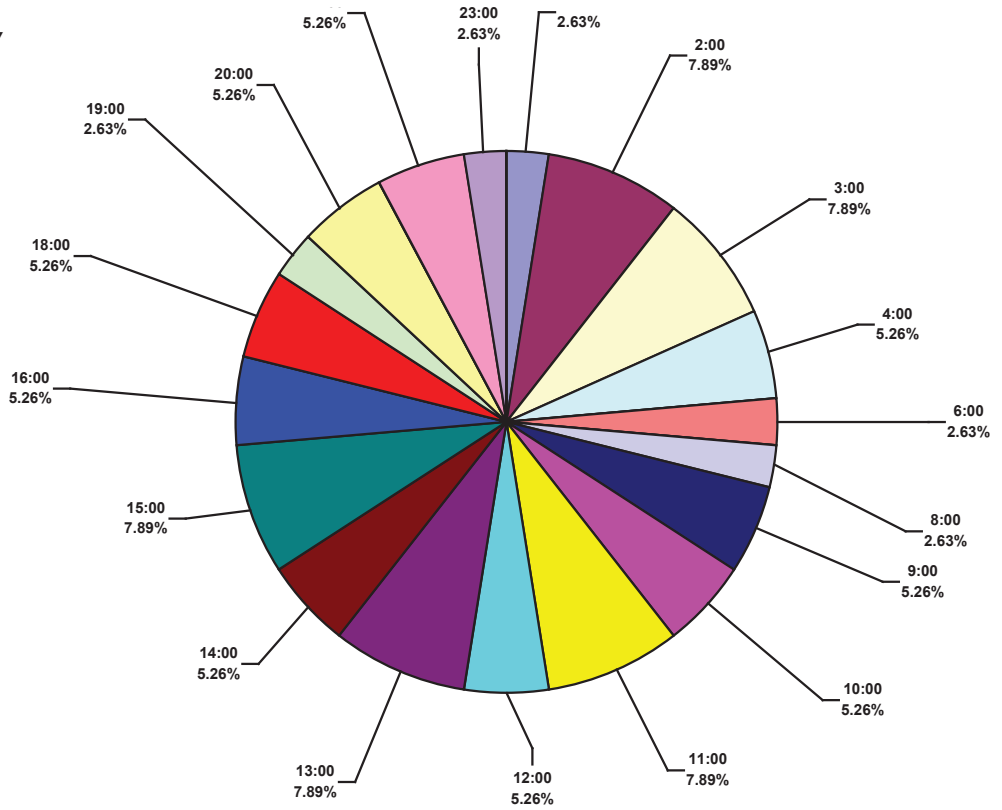
**US Water Total Recordable Incidents by Time in Service (Chart 8)**

Based on 38 Incidents



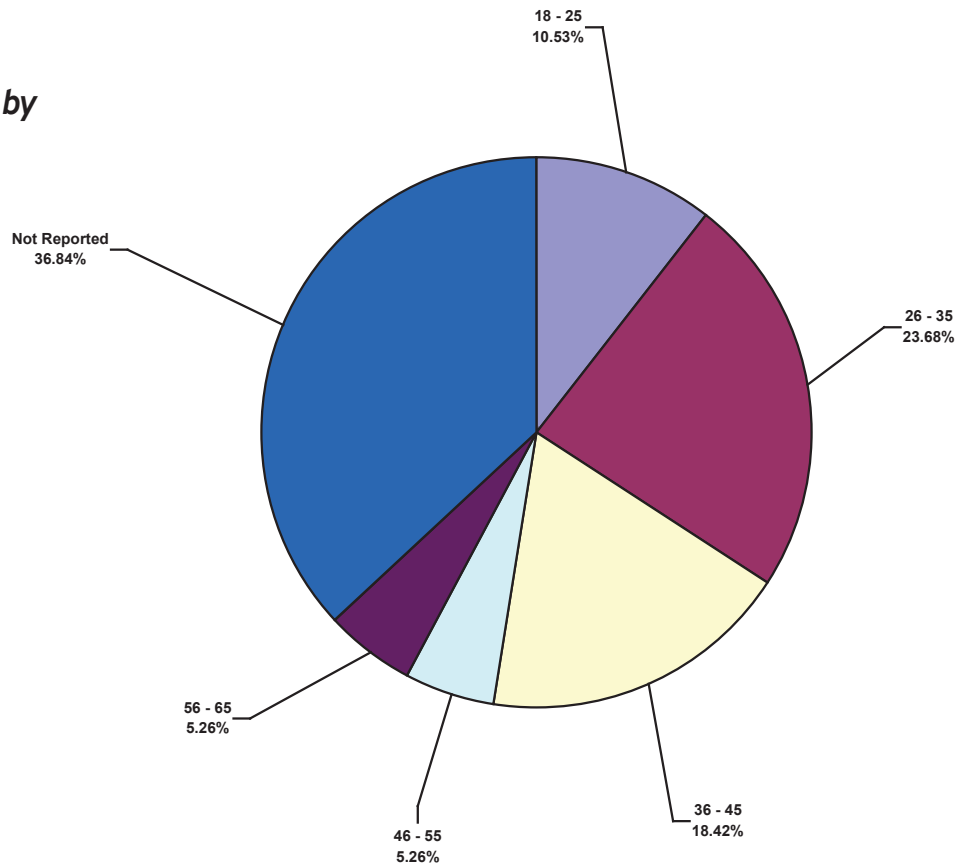
**US Water Total  
Recordable Incidents by  
Time of Day (Chart 9)**

Based on 38 Incidents



**US Water Total  
Recordable Incidents by  
Age (Chart 10)**

Based on 38 Incidents





## IADC 2021 US Water Participant Detail by Category (Table 2)

MANHOURS	MTOS	RWCS	LTIS	FTLS	RCRD	LTI INCD	LTI FREQ	MTO INCD	RWD INCD	DART INCD	DART FREQ	RCRD INCD	RCRD FREQ
2,617,526.00	3	5	0	0	8	0.00	0.00	0.23	0.38	0.38	1.91	0.61	3.06
1,772,985.00	1	1	2	0	4	0.23	1.13	0.11	0.11	0.34	1.69	0.45	2.26
1,605,109.00	0	4	0	0	4	0.00	0.00	0.00	0.50	0.50	2.49	0.50	2.49
1,542,543.00	0	0	0	0	0	0.00	0.00	0.00	0.00	0.00	0.00	0.00	0.00
1,301,543.00	2	2	1	0	5	0.15	0.77	0.31	0.31	0.46	2.30	0.77	3.84
977,558.00	3	6	1	0	10	0.20	1.02	0.61	1.23	1.43	7.16	2.05	10.23
783,472.00	3	1	1	0	5	0.26	1.28	0.77	0.26	0.51	2.55	1.28	6.38
718,361.00	2	0	0	0	2	0.00	0.00	0.56	0.00	0.00	0.00	0.56	2.78
186,994.00	0	0	1	0	1	1.07	5.35	0.00	0.00	1.07	5.35	1.07	5.35
133,718.00	0	0	0	0	0	0.00	0.00	0.00	0.00	0.00	0.00	0.00	0.00
26,720.00	0	0	0	0	0	0.00	0.00	0.00	0.00	0.00	0.00	0.00	0.00
11,666,529.00	14	19	6	0	39	0.10	0.51	0.24	0.33	0.43	2.14	0.67	3.34