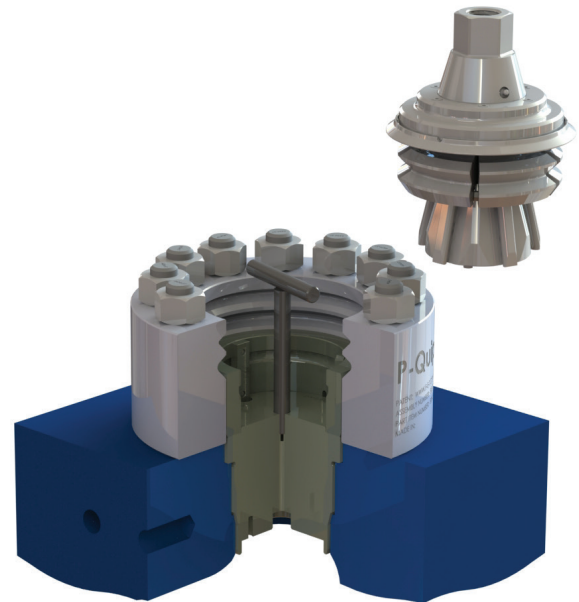


ML Series Valve Cover

The patent pending P-Quip® ML Series Valve Cover is a plug and play solution for today's high pressure mud pumps. This system was specifically developed to reduce downtime, increase safety, and improve overall equipment life. The robust design and backwards compatibility with existing fluid end modules allows for a simple install as no modifications are required to your existing modules. The ML Valve Cover provides quick access to replaceable components for easy maintenance in the field.

The ML Valve Cover is operated with an impact wrench which eliminates hazards associated with hammer swinging on alternative valve covers. The simplified design of this system allows the rig crew to access and secure valves and seats in less than 90 seconds, reducing downtime.



Advantages:

- Reduces downtime / increases efficiency
- Improves rig safety
- One-piece locking system enables consistent retention
- Prevents leakage and excessive plug "breathing" during pump operation
- Robust design eliminates binding or locking during installation and removal
- Retraction and expansion controlled by guides for smooth operation
- Offshore corrosion resistant system, including environmental seal
- Anti-Vibration locking thread maintains positive sealing action
- Plug and play solution

