



WHEN TRUST MATTERS

# MMC – Machinery Maintenance Connect

IADC Maintenance Committee Meeting 2021-04-28

David McKay

# Machinery Survey Arrangements

## Machinery PMS Digital

- Annual follow up of vessels' maintenance data through MMC dashboard
- Complete insight into all reported maintenance
- Audit together with fleet technical management
- One survey – one fleet

## Machinery Planned Maintenance System

- Annual follow up of maintenance system onboard by surveyor
- Spot check of reported maintenance
- Audit together with CE
- One survey – one vessel

## Machinery Continuous / Renewal

- 5 yearly follow up of condition by surveyor
- Inspection of machinery component based on criticality and class function
- Reported maintenance by CE may be used as basis
- One survey – one vessel

# Machinery Maintenance Connect (MMC)



# Added value

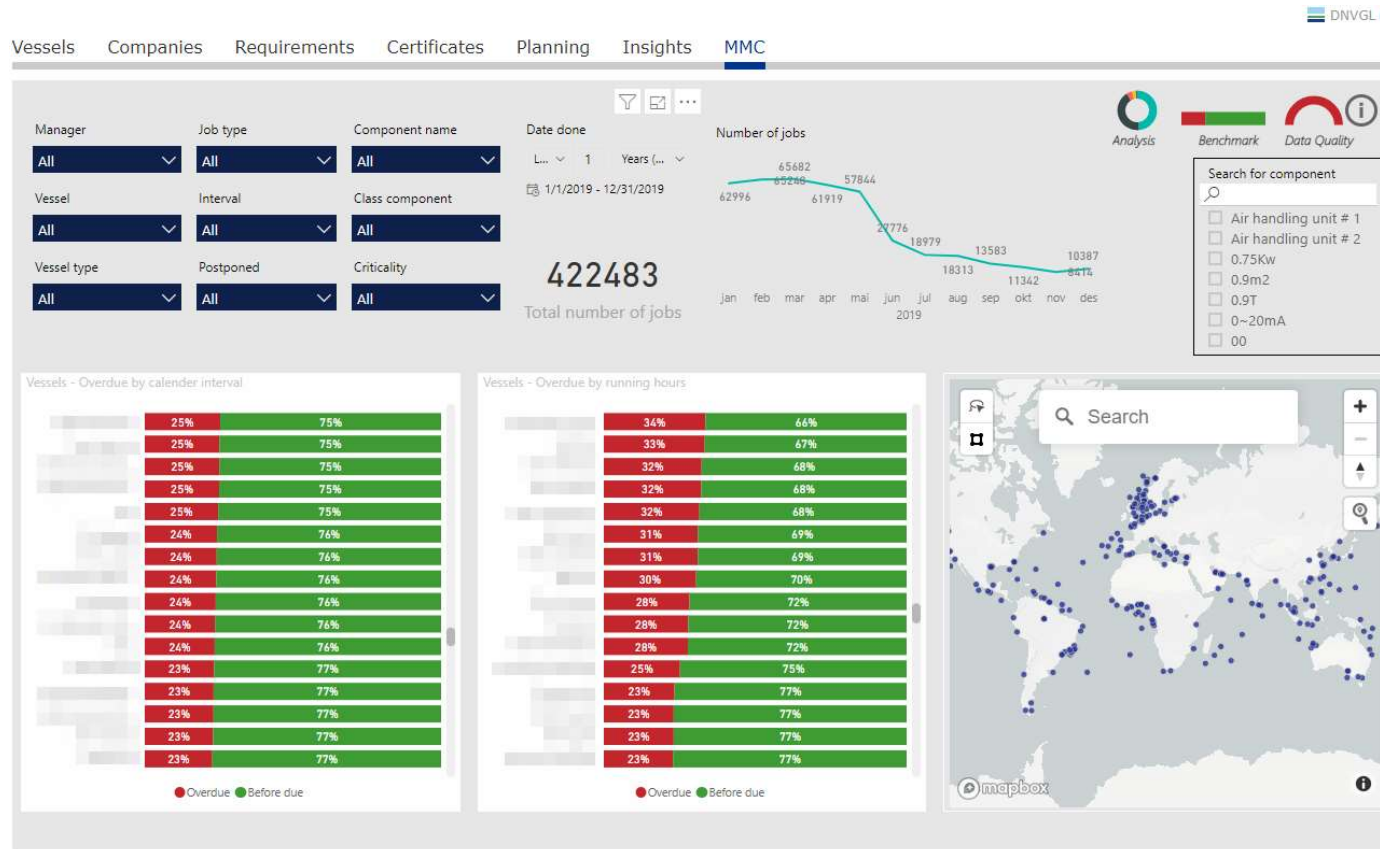
## Added value for users of MMC survey arrangement

- Less **time** (on annual and initial)
- Less **interference** with normal operation
- Detailed **insight** of vessel maintenance
- Direct **feedback** to Fleet Management
  - Fleet and vessel overview
  - Survey the whole fleet

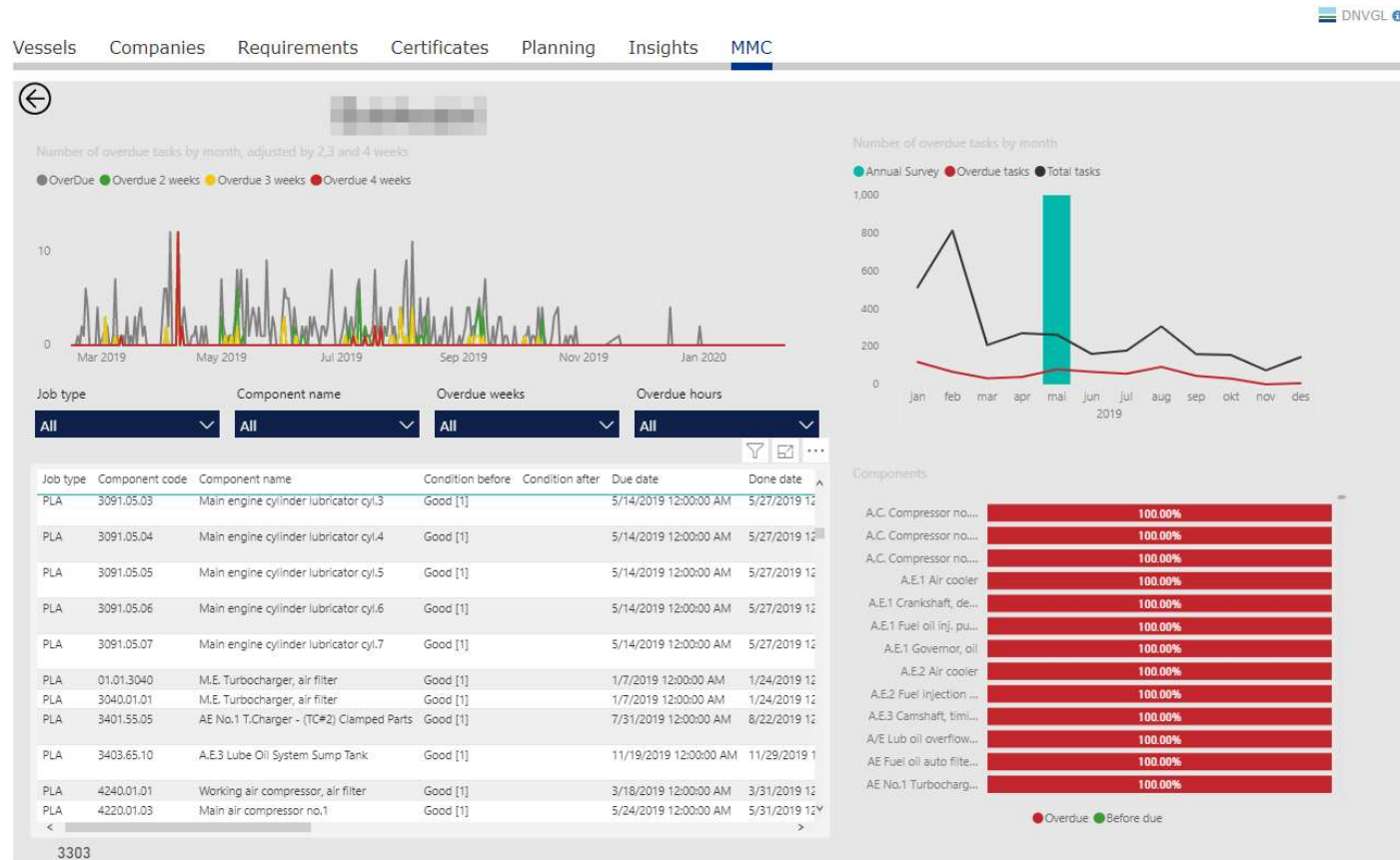
## Added value for users of MMC

- Fleet and vessel maintenance overview
- Detailed **insight** of vessel maintenance
- Delivering data analytics and **decision support** to owner to optimize maintenance
- Available for vessels **not on MMC**
- Available for vessels **not with DNV GL**

# Fleet Overview

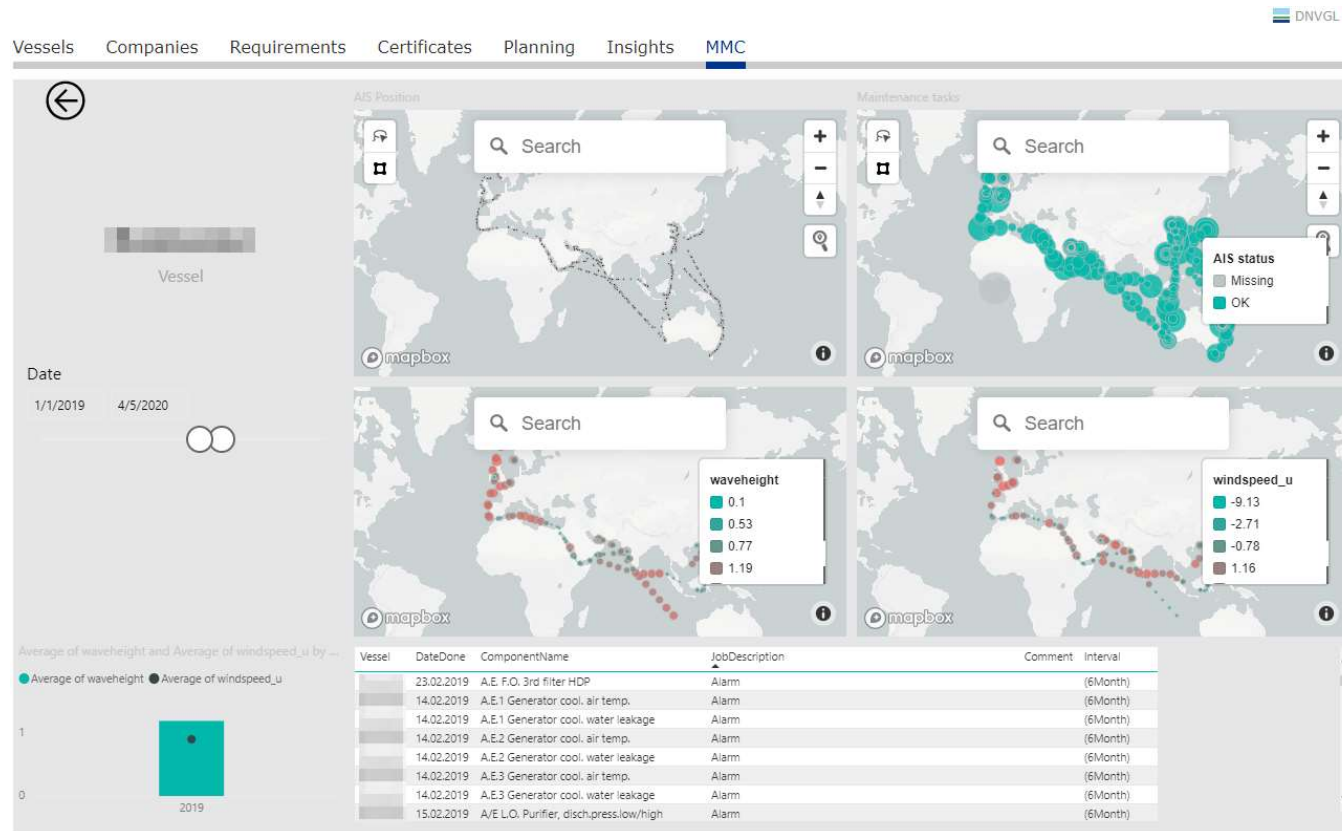


# Vessel Details





# AIS connected with Maintenance and Weather Data

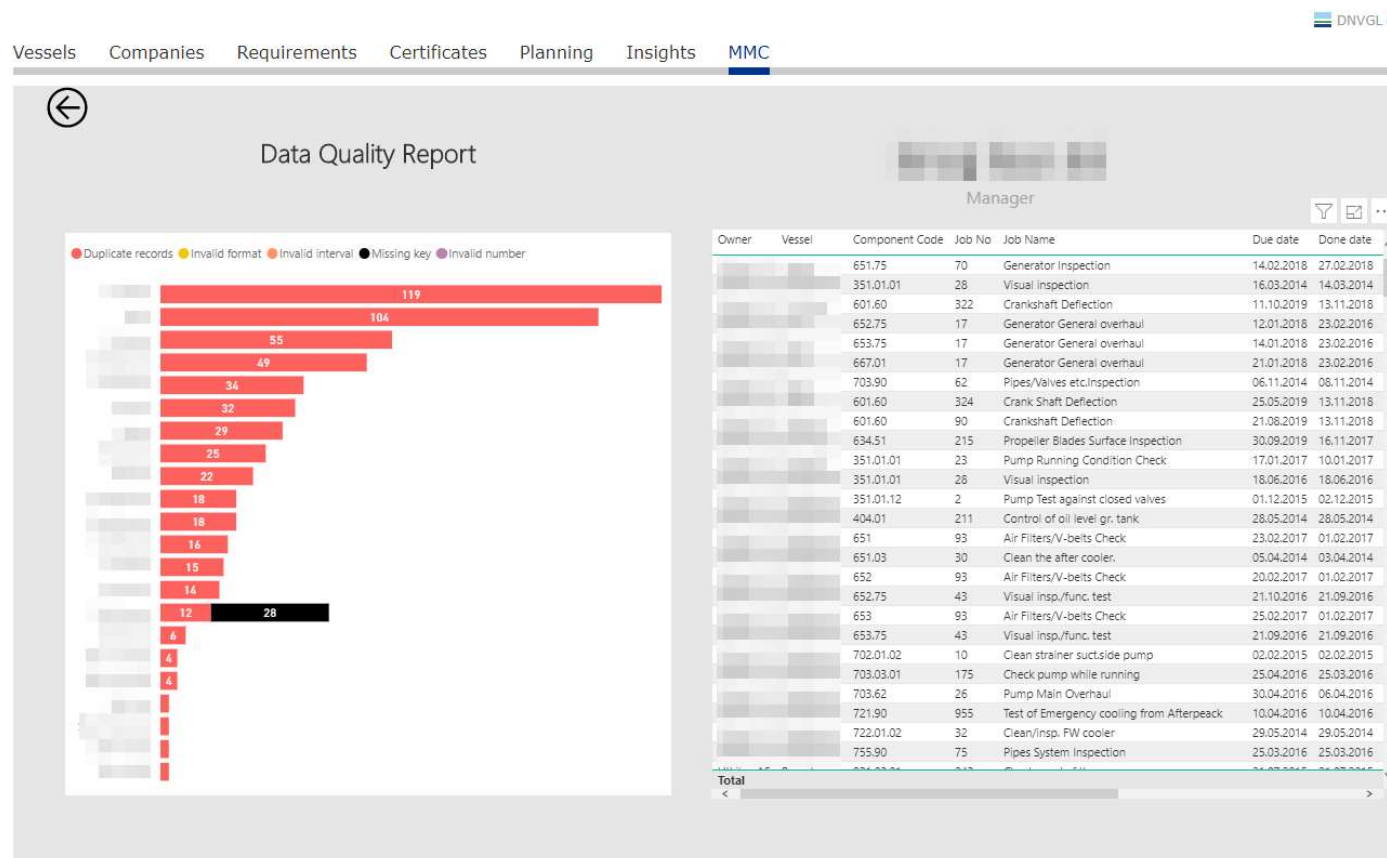


# Analytics



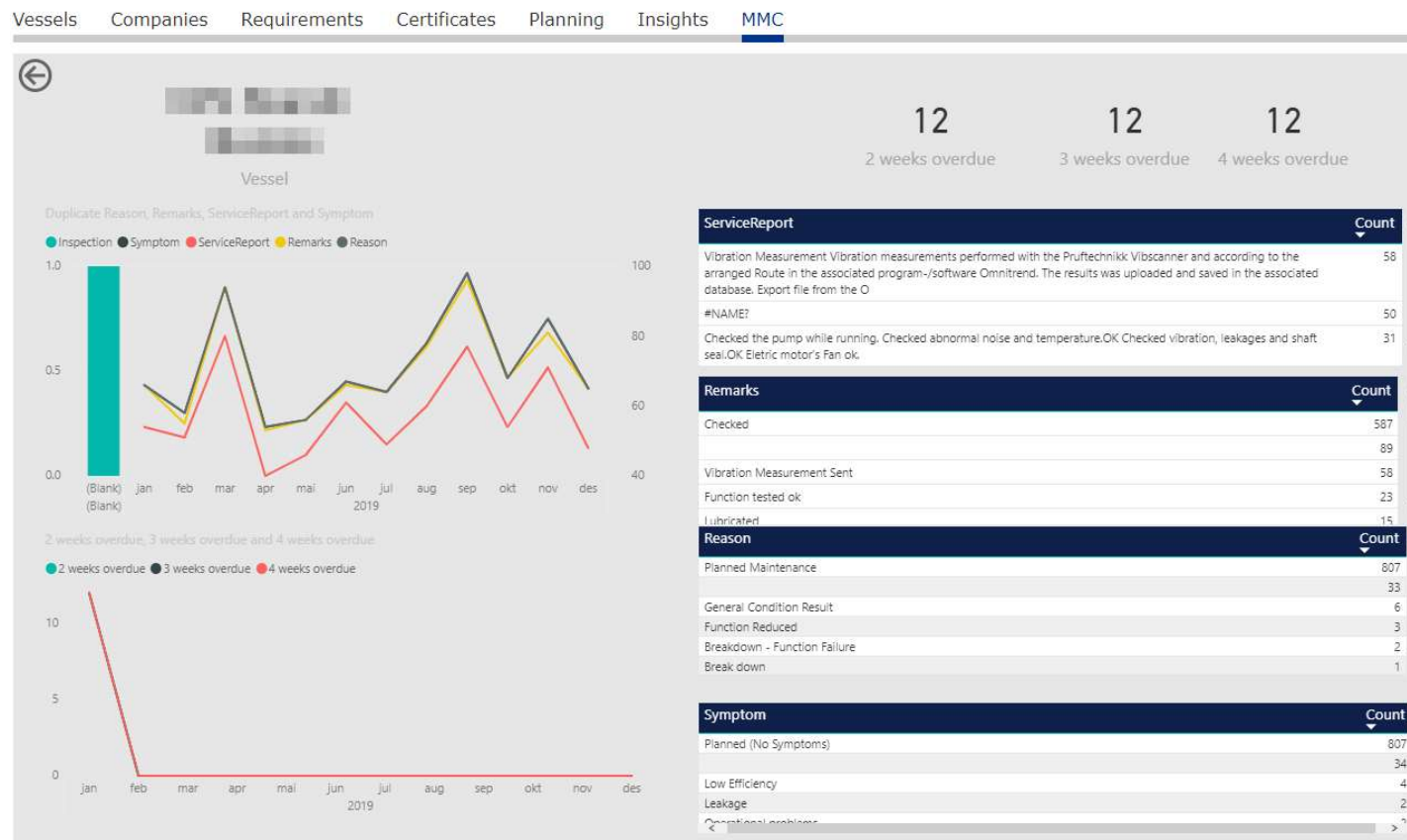


# Data Quality Report

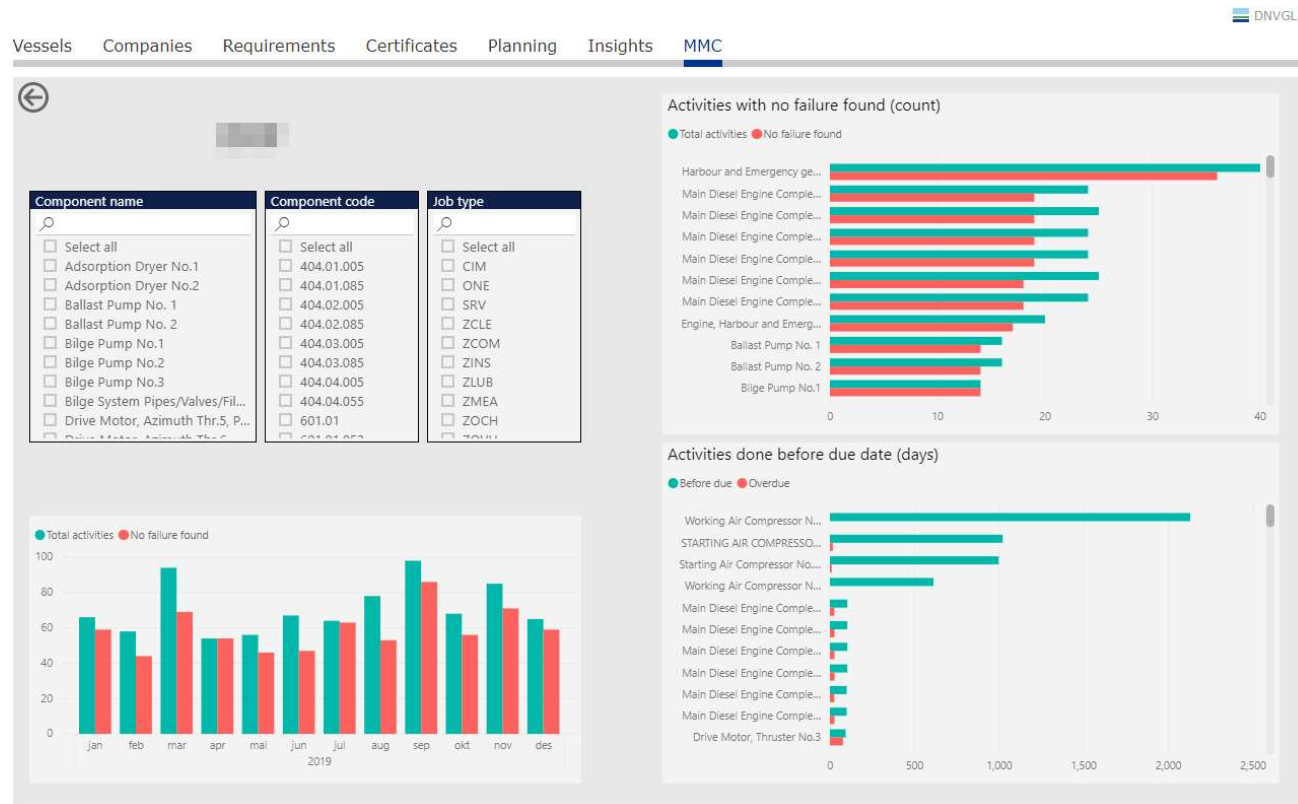


# Reporting Insight

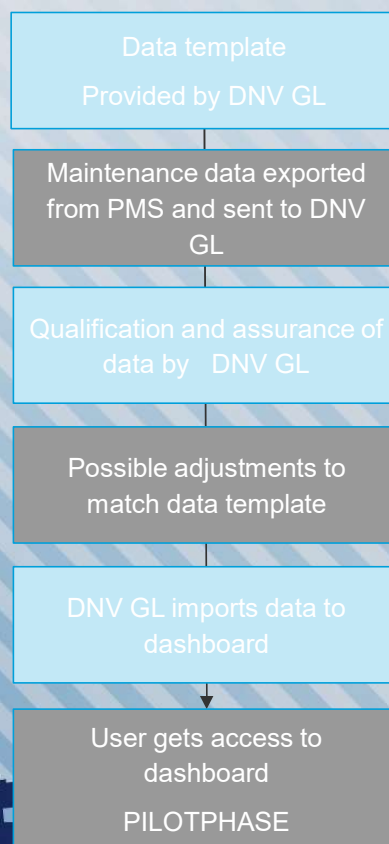
DNVGL



# Maintenance Analytics



# How to get started?



# Where to find more information

- External Pages

- <https://www.dnvgl.com/services/machinery-maintenance-connect-mmc--168870>
- <https://www.dnvgl.com/maritime/service/machinery-maintenance-connect-mmc/index.html>

WHEN TRUST MATTERS

[www.dnv.com](http://www.dnv.com)

