



Incorporated in 1997, Control Technology Inc. is a manufacturer and service provider of Surface Mounted Well Control Equipment to the global market, which includes;

- BOP's - Sales, Service, Recertification & Parts
- BOP Control Systems - Manufacturing, Sales, Service, Recertification & Parts
- In-house Designed Automation

# BOP's

Sales, Service, Recertification & Parts

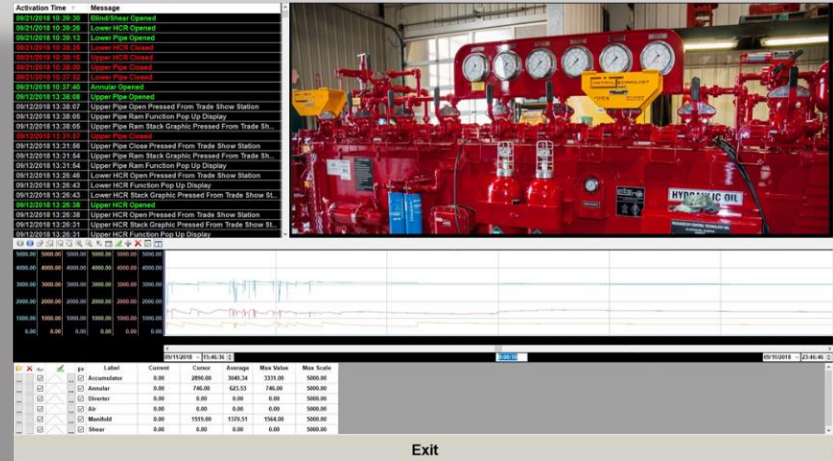


# BOP/HCR Accumulator Control Systems

Manufacturing, Sales, Service, Recertification & Parts



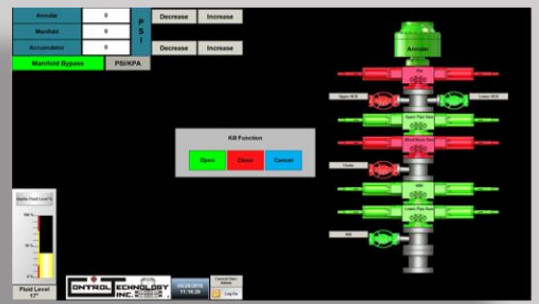
# Automation & Data Acquisition

Activation Time	Message
09/12/2018 10:29:00	Lower HCR Closed
09/12/2018 10:29:26	Lower HCR Opened
09/12/2018 10:29:13	Lower Pipe Opened
09/12/2018 10:28:18	Lower HCR Closed
09/12/2018 10:28:09	Lower Pipe Closed
09/12/2018 10:27:42	Lower HCR Opened
09/12/2018 10:27:40	Lower Pipe Opened
09/12/2018 10:27:40	Upper Pipe Closed
09/12/2018 13:38:07	Upper Pipe Open Pressed From Trade Show Station
09/12/2018 13:38:09	Upper Pipe Ram Stack Graphic Pressed From Trade Sh.
09/12/2018 13:38:05	Upper Pipe Ram Stack Graphic Pressed From Trade Sh.
09/12/2018 13:31:56	Upper Pipe Close Pressed From Trade Show Station
09/12/2018 13:31:54	Upper Pipe Ram Stack Graphic Pressed From Trade Sh.
09/12/2018 13:29:54	Upper Pipe Ram Function Pop Up Display
09/12/2018 13:29:48	Lower HCR Open Pressed From Trade Show Station
09/12/2018 13:29:43	Lower HCR Function Pop Up Display
09/12/2018 13:29:43	Lower HCR Stack Graphic Pressed From Trade Show St.
09/12/2018 13:29:38	Upper HCR Opened
09/12/2018 13:29:38	Upper HCR Open Pressed From Trade Show Station
09/12/2018 13:29:31	Upper HCR Stack Graphic Pressed From Trade Show St.
09/12/2018 13:29:31	Upper HCR Function Pop Up Display

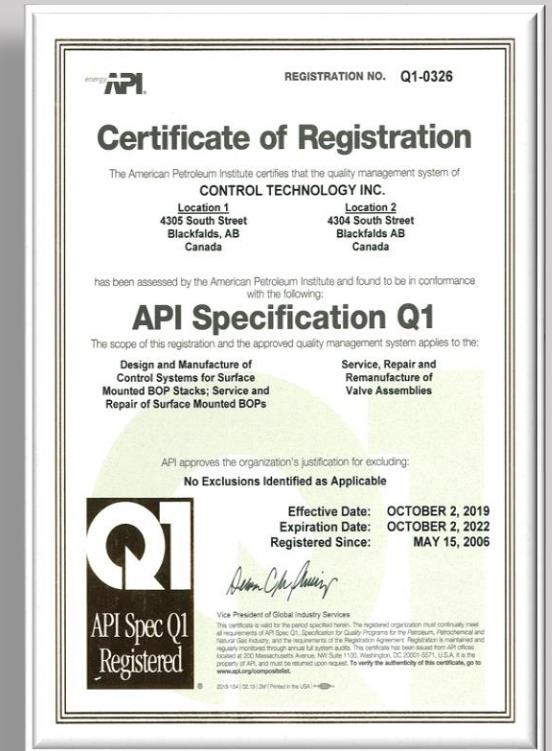
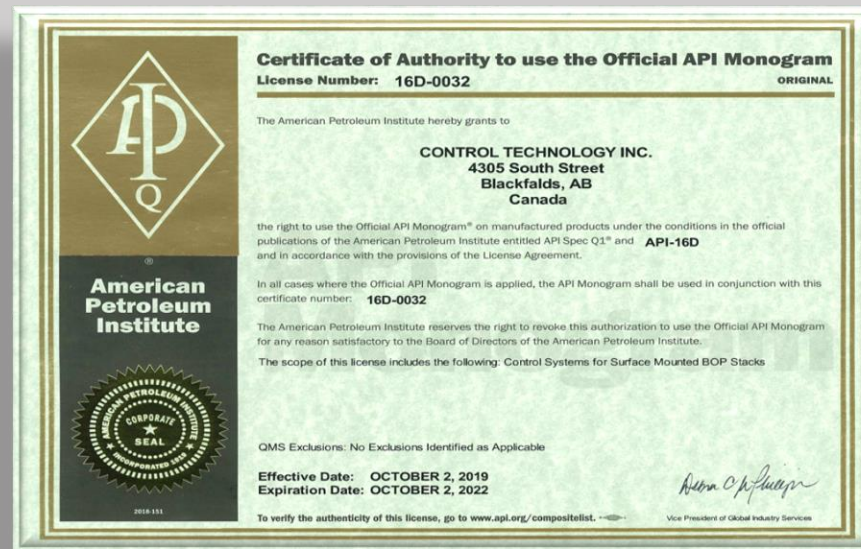
  

Label	Current	Center	Average	Max Value	Min Scale
Accumulator	0.00	2890.00	340.34	3331.00	5000.00
Annular	0.00	740.00	631.53	146.00	5000.00
Shearer	0.00	0.00	0.00	0.00	5000.00
Bit	0.00	0.00	0.00	0.00	5000.00
Motor&M	0.00	1129.00	1379.15	1564.00	5000.00
Shear	0.00	0.00	0.00	0.00	5000.00



# API Accreditations

ISO 9001-2015 • API 16D • API Q1



## International Customer List (Excluding Canada)

Ensign International	Australia	Arabian Drilling	Saudi Arabia	Aztec Drilling	USA
Eastern Well Service	Australia	Xtreme Drilling	Saudi Arabia	Doyon Drilling	USA
Energy Drilling	Australia	Schlumberger	Saudi Arabia	Ensign Drilling	USA
Savanna Energy Services Pty	Australia	Baker Hughes / Raptor	Saudi Arabia	Hilcorp Drilling	USA
Schlumberger (SLR)	Australia	Weatherford	UAE	Nabors Drilling	USA
TDC Drilling Pty	Australia	EDC Romfor	Iraq	Nordic Calista Services	USA
Wild Desert Pty	Australia	Parker Drilling	Iraq	Parker Drilling	USA
AJ Lucas	Australia	Petrofor	Gabon	Patterson - UTI	USA
Greymouth Petroleum Ltd	New Zealand	Simmons Edeco Inc	Croatia	Predator Drilling	USA
NRG Drilling Ltd	New Zealand	AlbDrilling	Albania	Raptor Rig	USA
EMAS Energy Services	Thailand	Schlumberger	Mexico	Savanna Drilling	USA
High Arctic Services	Papua New Guinea	GRS Drilling	Colombia	Streamflo	USA
Schlumberger (SLR)	Oman	Peruana de Perforacion	Peru	TechnipFMC	USA
Ensign International	Oman	Schlumberger	Ecuador	Trinidad Drilling	USA
Intaj LLC	Oman	DLS / Archer Group	Argentina	Unit Drilling	USA
Occidental Makhaizna	Oman	Great Oil	Brazil	Weir Oil & Gas	USA
Weatherford Drilling	Oman	Vale SA	Brazil	Western Energy Services	USA
Al Khasain Oilfield Services	Oman	Akita Drilling	USA	Xtreme Drilling	USA
Alshawamikh Oil Services	Oman	Alaska Drilling	USA		