



Incorporated in 1997, Control Technology Inc. is a manufacturer and service provider of Surface Mounted Well Control Equipment to the global market, which includes;

- BOP's - Sales, Service, Recertification & Parts
- BOP Control Systems - Manufacturing, Sales, Service, Recertification & Parts
- In-house Designed Automation

BOP's

Sales, Service, Recertification & Parts

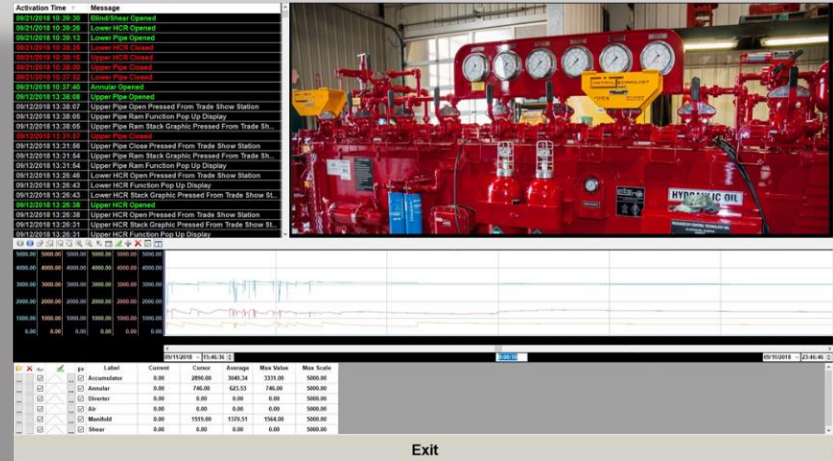


BOP/HCR Accumulator Control Systems

Manufacturing, Sales, Service, Recertification & Parts



Automation & Data Acquisition

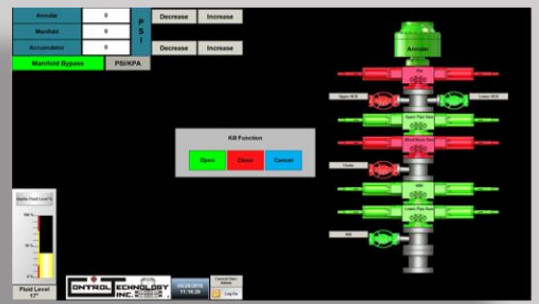



Activation Time Message

Activation Time	Message
09/12/2018 10:30:00	Lower HCR Closed
09/12/2018 10:30:26	Lower HCR Opened
09/12/2018 10:30:13	Lower Pipe Closed
09/12/2018 10:30:18	Lower HCR Closed
09/12/2018 10:30:30	Upper Pipe Closed
09/12/2018 10:37:42	Lower HCR Closed
09/12/2018 10:37:42	Lower HCR Opened
09/12/2018 10:37:46	Upper Pipe Closed
09/12/2018 13:38:07	Upper Pipe Open Pressed From Trade Show Station
09/12/2018 13:38:09	Upper Pipe Ram Function Pop Up Display
09/12/2018 13:38:05	Upper Pipe Ram Stack Graphic Pressed From Trade Sh.
09/12/2018 13:38:07	Upper Pipe Closed Pressed From Trade Show Station
09/12/2018 13:31:56	Upper Pipe Ram Stack Graphic Pressed From Trade Sh.
09/12/2018 13:31:54	Upper Pipe Ram Function Pop Up Display
09/12/2018 13:28:48	Lower HCR Open Pressed From Trade Show Station
09/12/2018 13:28:43	Lower HCR Function Pop Up Display
09/12/2018 13:28:43	Lower HCR Stack Graphic Pressed From Trade Show St.
09/12/2018 13:28:38	Upper HCR Opened
09/12/2018 13:28:38	Upper HCR Open Pressed From Trade Show Station
09/12/2018 13:28:31	Upper HCR Stack Graphic Pressed From Trade Show St.
09/12/2018 13:28:31	Upper HCR Function Pop Up Display

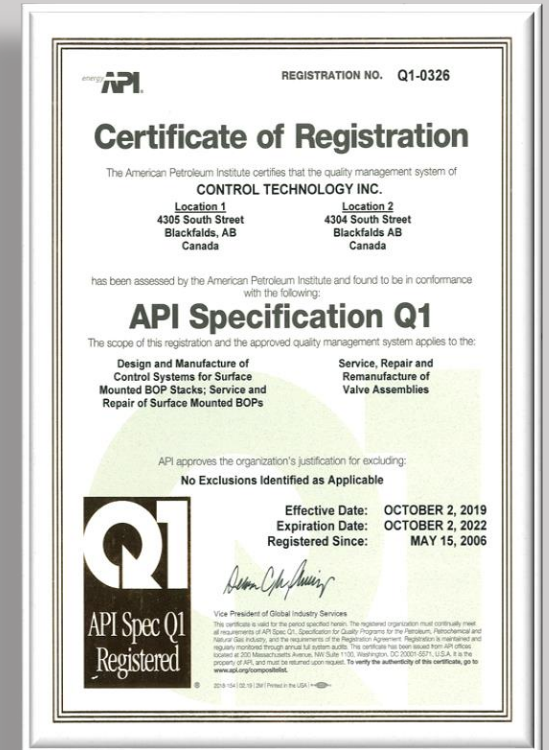
Label	Current	Center	Average	Max Value	Min Scale
Accumulator	0.00	2890.00	340.34	3331.00	5000.00
Annular	0.00	740.00	631.53	146.00	5000.00
Shearer	0.00	0.00	0.00	0.00	5000.00
AP	0.00	0.00	0.00	0.00	5000.00
BlowM	0.00	1129.00	1379.15	1564.00	5000.00
Shear	0.00	0.00	0.00	0.00	5000.00

Exit



API Accreditations

ISO 9001-2015 • API 16D • API Q1



International Customer List (Excluding Canada)

Ensign International	Australia	Weatherford Drilling	Oman	Ensign Drilling	USA
Eastern Well Service	Australia	Al Khasain Oilfield Services	Oman	Hilcorp Drilling	USA
Energy Drilling	Australia	Arabian Drilling	Saudi Arabia	Nabors Drilling	USA
Savanna Energy Services Pty	Australia	Xtreme Drilling	Saudi Arabia	Nordic Calista Services	USA
Schlumberger (SLR)	Australia	Schlumberger	Saudi Arabia	Parker Drilling	USA
TDC Drilling Pty	Australia	Baker Hughes / Raptor Rig	Saudi Arabia	Patterson - UTI	USA
Wild Desert Pty	Australia	Weatherford	UAE	Predator Drilling	USA
AJ Lucas	Australia	Petrofor	Gabon	Raptor Rig	USA
Greymouth Petroleum Ltd	New Zealand	OFS Global	Croatia	Savanna Drilling	USA
NRG Drilling Ltd	New Zealand	Schlumberger	Mexico	Streamflo	USA
EMAS Energy Services	Thailand	GRS Drilling	Colombia	Technip FMC	USA
High Arctic Services	Papua New Guinea	Peruana de Perforacion	Peru	Trinidad Drilling	USA
Schlumberger (SLR)	Oman	Schlumberger	Ecuador	Unit Drilling	USA
Ensign International	Oman	DLS / Archer Group	Argentina	Weir Oil & Gas	USA
Intaj LLC	Oman	Akita Drilling	USA	Western Energy Services	USA
Occidental Makhaizna	Oman	Doyon Drilling	USA	Xtreme Drilling	USA