

DRILLING CHOKES

CORTEC is setting industry standards with our field-adaptable choke designs.

CORTEC manufactures a complete line of drilling chokes including CX3 Worm Gear, CX3 Hydraulic Piston, CXC2 and CX6 models. CORTEC Drilling/Extreme Service Chokes are designed to offer the oilfield operator increased service life and cost savings in high-pressure applications where substantial amounts of solids and abrasives are present. Models are designed for extreme conditions like frac flowback, drilling, choke & kill, coil tubing, well control and snubbing.

In addition to the rugged design of the choke internals, CORTEC recognizes the need for field friendly options to round out a complete operating system.

- Control consoles to include the electronic hardware/software to control either hydraulically or electrically actuated chokes for total system responsibility.
- Gantry Systems are available on most models to allow the operator to slide and rotate the bonnet assembly for quick, relatively easy trim changes or maintenance.
- Manifold/Skid Systems designed, assembled and tested as a complete system with single source responsibility.

DESIGN FEATURES AND BENEFITS

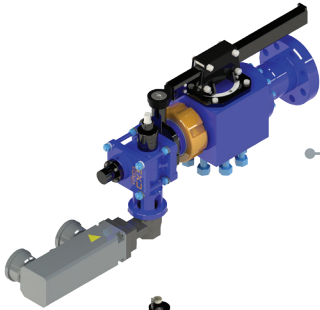
CHOKES MODELS

	CX3 Worm Gear	CX3 Hydraulic Piston	CXC2	CX6
Manufactured to API 6A PSL-3	X	X	X	X
Manufactured to NACE MR0175	X	X	X	X
API-16C monogram available upon request	X	X	X	*
Available in 1-½" or 2" orifice size	X	X	X	
Available in 3" orifice size	X	X		
Available in 6" orifice size				X
Available in 15,000 PSI	X	X	X	
Available up to 5,000 PSI				X
SS RTJ weld overlay on inlet/outlet grooves as standard	X	X		X
Tungsten carbide reversible trim set	X	X	X	
Gantry system available upon request	X	X		X
Wear resistant nose cone for extended wear protection [integral with bonnet on CXC2]	X	X	X	X
Tungsten carbide wear sleeves installed in outlet spool for extended wear protection [only 1 sleeve in CXC2]	X	X	X	X
Electric control options available upon request	X			X
Manual override capability	X			X
Digital position indicator	X	X	X	X
Gate, seat, stem and bonnet removal tools available upon request	X	X	X	X

*Consult factory for details



CHOKE PRODUCT LINE



CORTEC MODEL CX3 WORM GEAR

Hydraulic or Electric Gear Actuated Choke

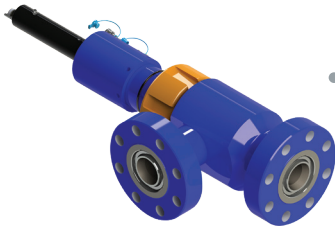
The CORTEC Model CX3 is a worm gear operated drilling choke that can be driven hydraulically or electrically/ The gear assembly allows for very fine incremental flow control adjustments. The manual override provides added insurance that the operator will be able to maintain control in the event of a power loss.



CORTEC MODEL CX3 HYDRAULIC PISTON

Hydraulic Piston Actuated Choke

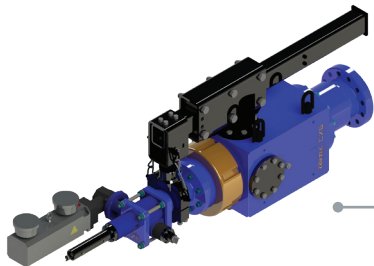
The CORTEC model CX3 is a hydraulic double acting piston operated drilling choke. CORTEC's piston operator design allows for rapid flow control adjustments. The block style body allows for the versatility to adapt to a wide variety of end connections types including ANSI, API and Hammer Union options. Chokes and control systems can be configured to customer specifications upon request.



CORTEC MODEL CXC2

Hydraulic Piston Actuated Choke

The CORTEC Model CXC2 is a hydraulic double acting piston operated drilling choke. CORTEC's piston operator design allows for rapid flow control adjustments. The flanged end body design is interchangeable with many common H2 type choke sin the field today. The CXC2 is also available in a manual configuration.



CORTEC MODEL CX6

Hydraulics or Electric Gear Actuated Choke

The CORTEC Model CX6 is a worm-gear driven drilling choke that can be hydraulically or electrically actuated. CORTEC's gear assembly allows for fine incremental flow control adjustments. The block style body allows for the versatility to adapt to a wide variety of end connections types including ANSI, API and Threaded Union options. Manual override ability provides end users added insurance that control ability will be maintained in the event of power loss. The large bore 6" orifice provides effective flow control in high flow rate operations such as deep water managed pressure drilling. Chokes and control systems can be configured to customer specifications upon request.

In addition to the extensive Drilling/Extreme Service Choke line, CORTEC offers comprehensive turnkey solutions for your operational needs with control panels and manifolds tailored to suit individual preferences and project specifications

No other choke manufacturer strives to exceed their customers' needs and expectations more than CORTEC.

Drilling Chokes Sales • 985-223-1966