



# PRECISION SUPER SINGLE

## > Safety & Performance Through Automation







### Operational Excellence:

Discover the features that make our rigs among the safest and most efficient in the industry.

### Moves:

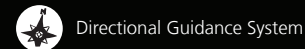
Precision's Super Single has the lowest load count of our fleet and is a lightning-fast mover.

### Safety & Performance Features:

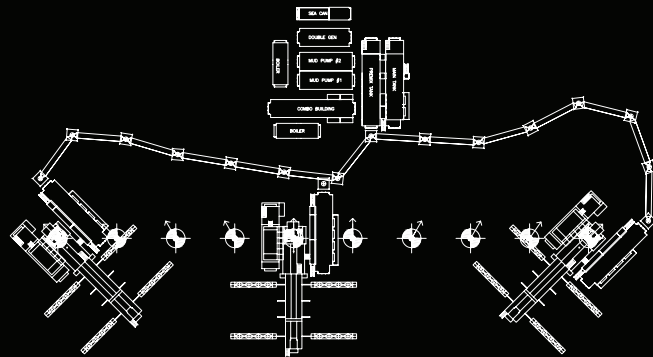
-  Omnidirectional pad walking system
-  AC drive system
-  Mechanized pipe handling (hydraulic pipe arm & iron roughneck)
-  Hydraulically raised mast
-  Top Drive integrated into the mast during rig moves
-  BOP handling system

### **NEW** Rig Automation Add-Ons:

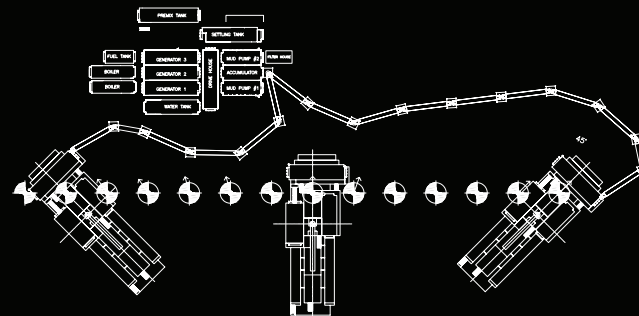
Digital drilling technologies have made drilling faster, more consistent and safer than ever. Discover Rig Automation additions for the Precision Super Single:



## > Pad Configuration



Precision's High Performance XY moving system travels up to 300 feet in any direction without disconnecting from the backyard complex.



### CALGARY HEAD OFFICE

525-8th Avenue S.W., Suite 800  
Calgary, AB T2P 1G1 Canada  
Office: (403) 716-4500

[www.precisiondrilling.com](http://www.precisiondrilling.com)

### HOUSTON OFFICE

10350 Richmond Avenue, Suite 700  
Houston, TX 77042 USA  
Office: (713) 435-6100

[www.precisiondrilling.com](http://www.precisiondrilling.com)

"High Performance, High Value," Precision Drilling logo & design and "Precision Super Single" are all trademarks owned by Precision Drilling Corporation. Product and service specifications may change without notice.







## ➤ Precision Super Single™

Precision Drilling’s Super Single is redefining the single rig category by challenging its rig class through unmatched performance, power, mobility, and versatility. The Super Single exceeds performance standards by offering highly automated features designed to improve operational efficiency, provide a safer working environment and deliver consistent results.



## ➤ High Performance, High Value

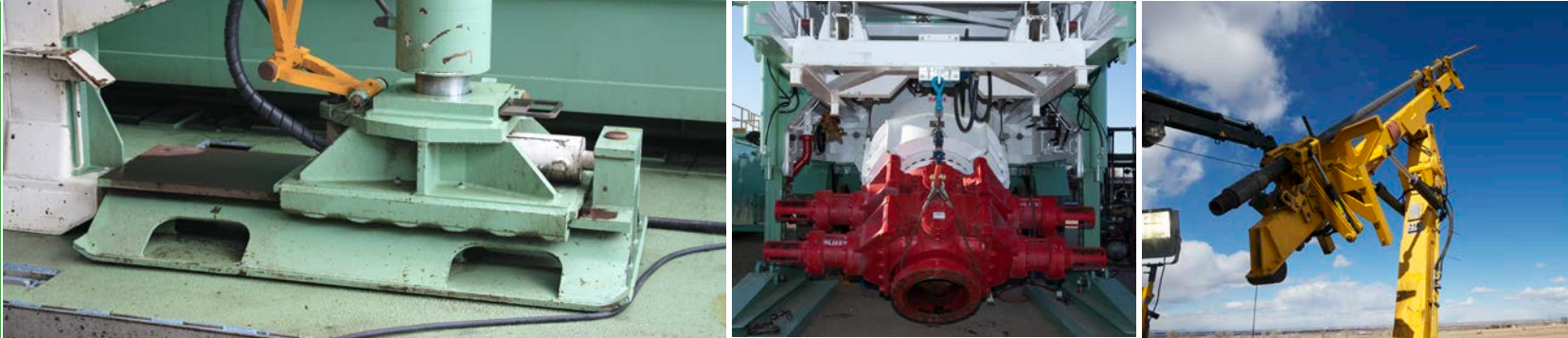
Ensuring the success of your drilling program means having the right technology, operational support systems and personnel in place to get the job done safely and efficiently. This is what Precision defines as High Performance, High Value. When we apply the best technology and people supported by tried and true systems to complete your project, we are able to deliver High Value by lowering risk, reducing well cost, and producing a higher quality wellbore.

### Super Single Models

Precision’s Super Single is available in four variants – Super Single, Super Single Light, Super Single Stretch and the latest platform style Super Single. Each is engineered for specific unconventional resource development.

### Vertical or Slant Mode

Adding to their versatility, certain Super Single rigs are capable of drilling in slant mode – allowing customers to select the optimal rig for their project.



## ➤ Features

Despite its small size and footprint, Precision’s Super Single is a powerful development drilling machine available with two 1600 HP mud pumps and a static hook load of up to 450,000 lbs.

The Precision Super Single delivers safe and High Performance, High Value operations through its use of automated features such as mechanized pipe handling, iron roughneck and BOP handling system.

The Precision Super Single has the lowest load count of our fleet and is a lightning-fast mover. A pad walking Super Single version is available. The walking system utilizes our unique umbilical connection system allowing the rig to move from well to well quickly with virtually no moving equipment.

Precision Super Single	Type	Spec
Drawworks	Rostel R-300 T2, R-600 T2, ARS 1201-AC, 1205-AC, 1209-AC	300 - 1200 HP
Mast	68’ single, 75’ slant single 82’ slant single, 90’ single	100,000 - 450,000 lbs hook load
Substructure	rig trailer style, one-piece style	
Walking System	optional hydraulic walking platform, optional hydraulic walking system	x-y axis capable, omnidirectional
Top Drive	R50-10SL, R150-30SL, R200-30TD, R225-30SL	50-225 Ton
Mud Pumps	BSF-500, F1000 Triplex, F-1600 Triplex	500-1600 HP ea. quantities as per customer
Mud System	157 - 1243 bbls active1 to 3 tanks plus transfer tank	
Mud Cleaning	1-5 shakers, optional desander, desilter	options available for customer specifications
Prime Generating Power	1x 400 HP diesel generator - up to 3x 1476 HP diesel engine, 1x 800 HP cold start genset	480 V, 600 V
BOP	ranges from 11” X 3000 psi up to 21 ¼” X 2000 psi	2 rams plus annular
Iron Roughneck	70,000 ft-lbs breakout	
Hydraulic Pipe Arm	holds 3 1/2” - 18 5/8”	Range II 3200 - up to 6500 lbs, Range III 1800 - up to 5000 lbs
Drill Pipe	Range II, Range III	sizes and tensile as per customer requirements