



IADC

**IADC
ISP PROGRAM**

2018



**Summary of Occupational
Incidents
(South America Land Totals)**

Issued 15 June 2019

Table of Contents

(Table of Contents is Hyperlinked, Just click on Topic & go)

IADC 2018 SOUTH AMERICA LAND TOTALS (TABLE 1).....	1
<i>Central/South America Land Total Incidence Rates vs Man-hours (Figure 1)</i>	1
IADC 2018 SOUTH AMERICA LAND CHARTS.....	2
<i>South America Land Total Lost Time Incidents by Month (Chart 1)</i>	2
<i>South America Land Total Recordable Incidents by Month (Chart 2)</i>	3
<i>South America Land Total Lost Time Incidents by Occupation (Chart 3)</i>	4
<i>South America Land Total Recordable Incidents by Occupation (Chart 4)</i>	5
<i>South America Land Total Lost Time Incidents by Body Part (Chart 5)</i>	6
<i>South America Land Total Recordable Incidents by Body Part (Chart 6)</i>	7
<i>South America Land Total Lost Time Incidents by Incident Type (Chart 7)</i>	8
<i>South America Land Total Recordable Incidents by Incident Type (Chart 8)</i>	9
<i>South America Land Total Lost Time Incidents by Equipment (Chart 9)</i>	10
<i>South America Land Total Recordable Incidents by Equipment (Chart 10)</i>	11
<i>South America Land Total Lost Time Incidents by Operation (Chart 11)</i>	12
<i>South America Land Total Recordable Incidents by Operation (Chart 12)</i>	13
<i>South America Land Total Lost Time Incidents by Location (Chart 13)</i>	14
<i>South America Land Total Recordable Incidents by Location (Chart 14)</i>	15
<i>South America Land Total Lost Time Incidents by Time in Service (Chart 15)</i>	16
<i>South America Land Total Recordable Incidents by Time in Service (Chart 16)</i>	17
<i>South America Land Total Lost Time Incidents by Time of Day (Chart 17)</i>	18
<i>South America Land Total Recordable Incidents by Time of Day (Chart 18)</i>	19
<i>South America Land Total Lost Time Incidents by Age (Chart 19)</i>	20
<i>South America Land Total Recordable Incidents by Age (Chart 20)</i>	21

IADC 2018 South America Land Totals (Table 1)

	<u>Total</u>
Total Manhours	11,149,566
Total Medical Treatment Incidents	7
Total Restricted Work Incidents	9
Total Lost Time Incidents	13
Total Fatalities	1
Total Recordables	30
MTO Incidence Rate	0.13
RWC Incidence Rate	0.16
LTI Incidence Rate	0.25
LTI Frequency Rate	1.26
DART Incidence Rate	0.41
DART Frequency Rate	2.06
Recordable Incidence Rate	0.54
Recordable Frequency Rate	42.69

Companies Reporting: Land – 8

Medical Treatment Incidence Rate = MTOs X 200,000

Restricted Work Incidence Rate = RWCs X 200,000

Lost Time Incidence Rate = LTIs + FTLs X 200,000

DART Incidence Rate = LTIs + RWC X 200,000

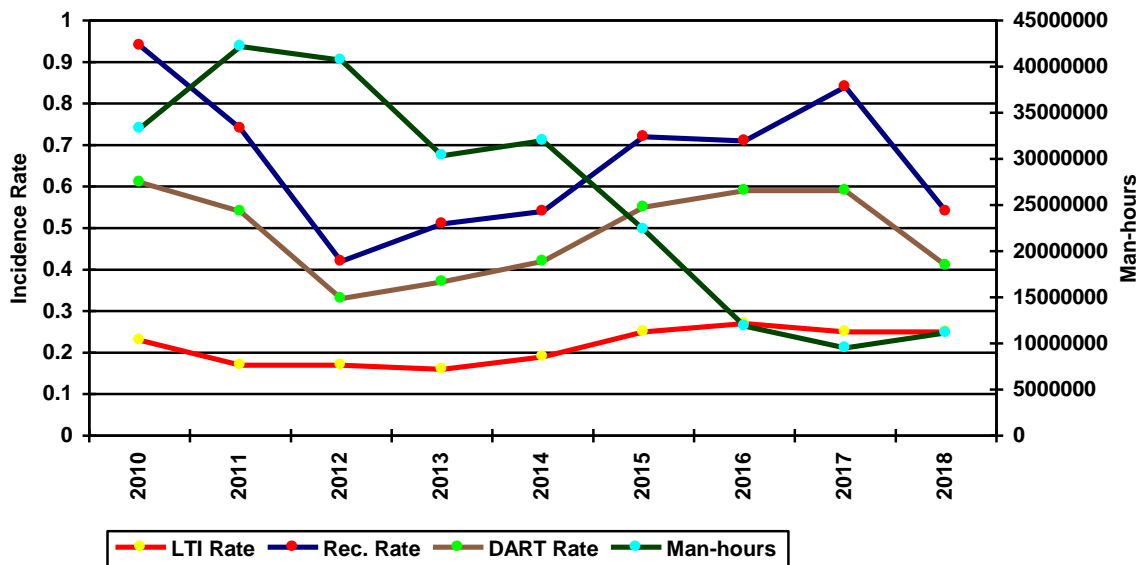
Recordable Incidence Rate = RCRD X 200,000

Lost Time Frequency Rate = LTIs +FTLs X 1,000,000

DART Frequency Rate = LTIs + RWC X 1,000,000

Recordable Frequency Rate = RCRD X 1,000,000

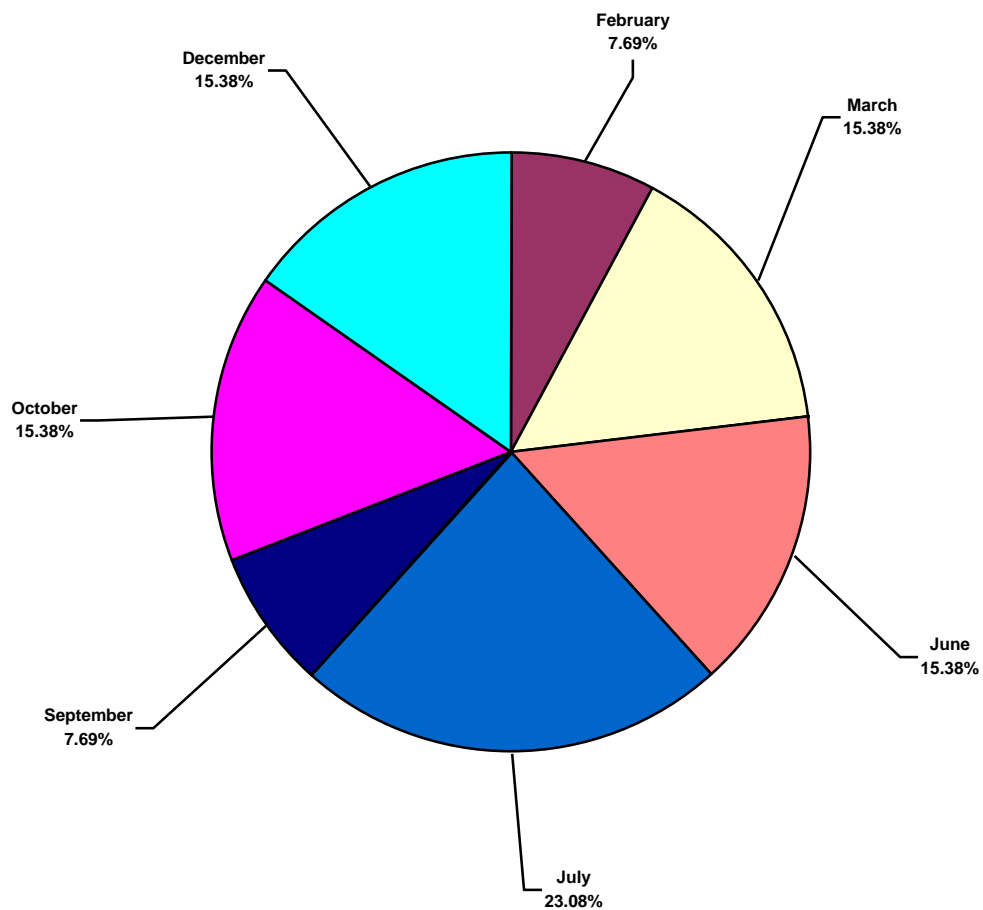
South America Land Total Incidence Rates vs Man-hours (Figure 1)



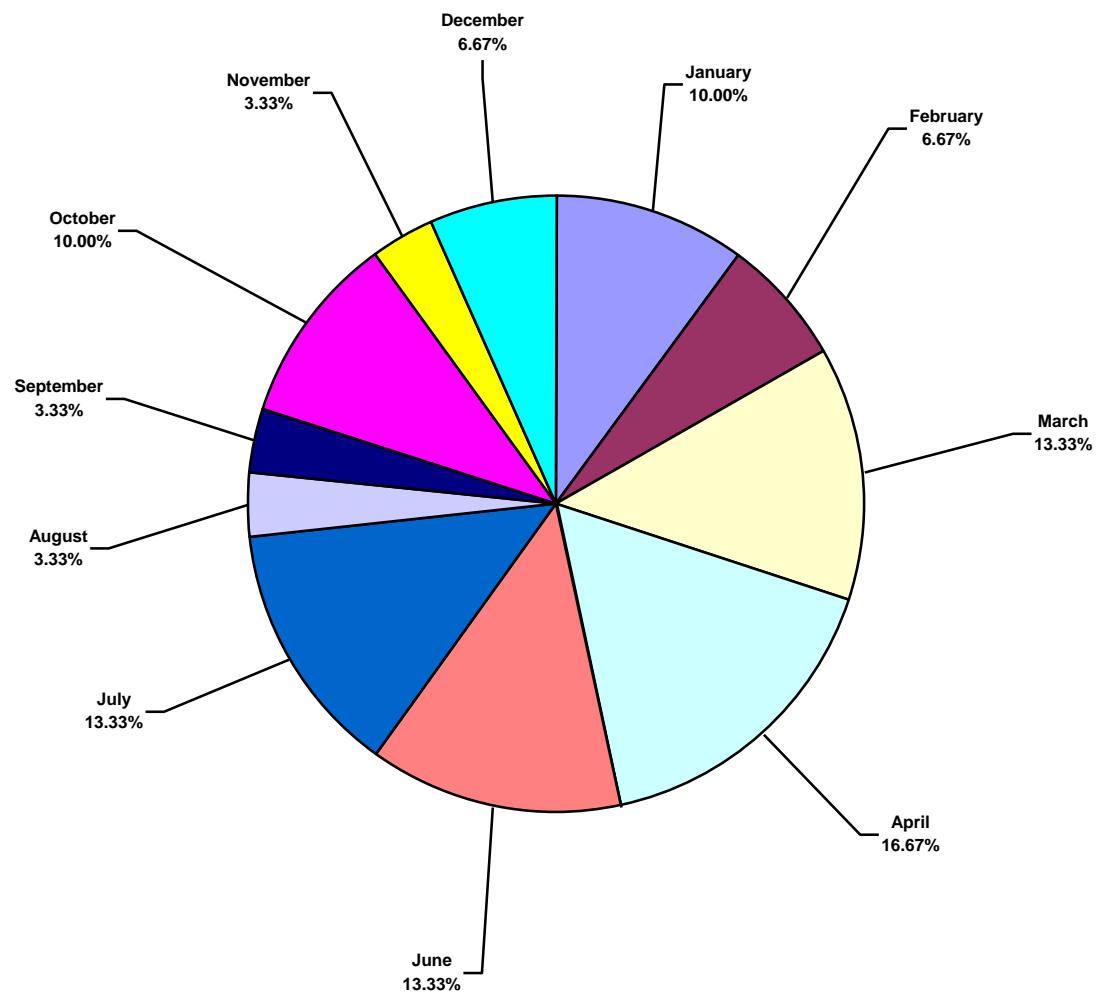
IADC 2018 South America Land Charts

South America Land Total Lost Time Incidents by Month (Chart 1)

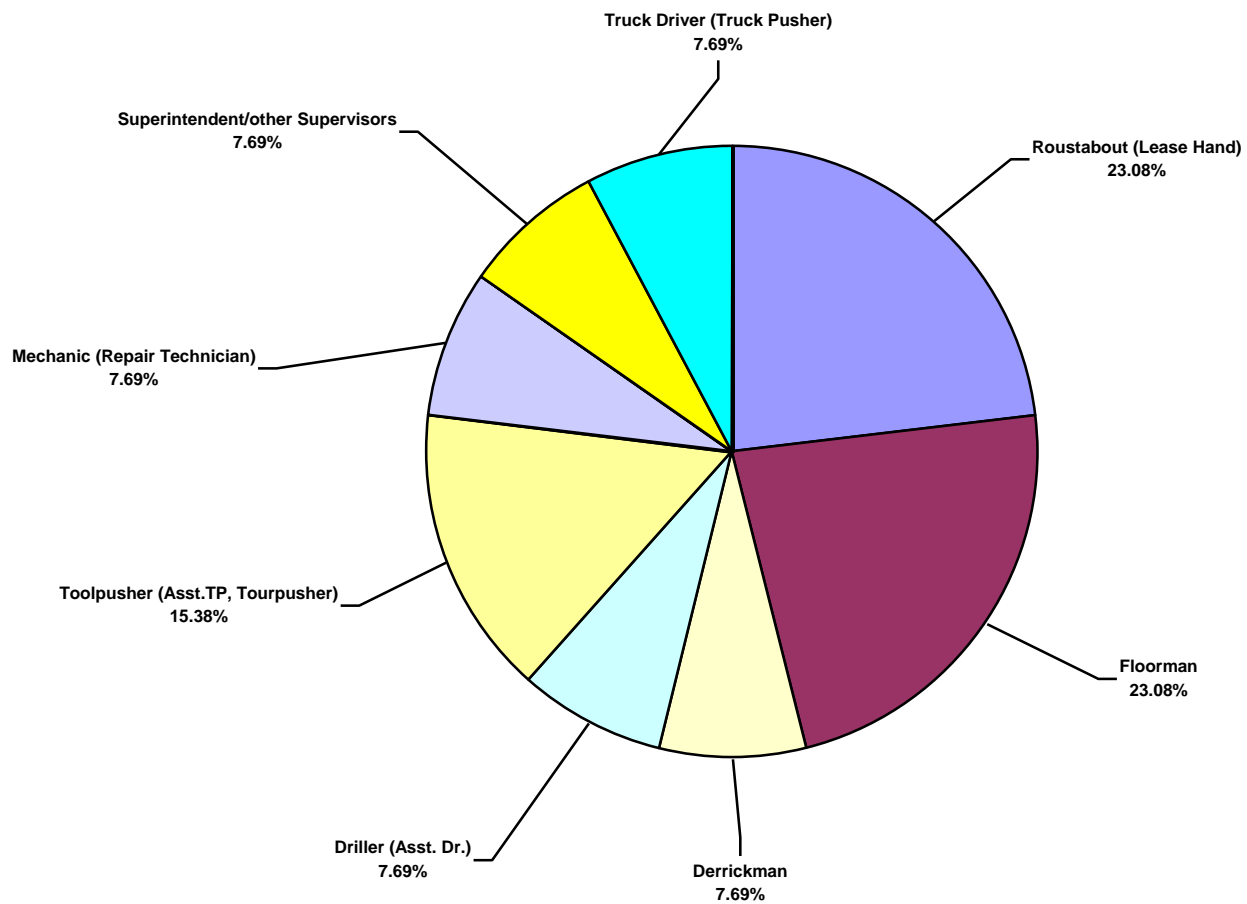
Based on 13 Incidents



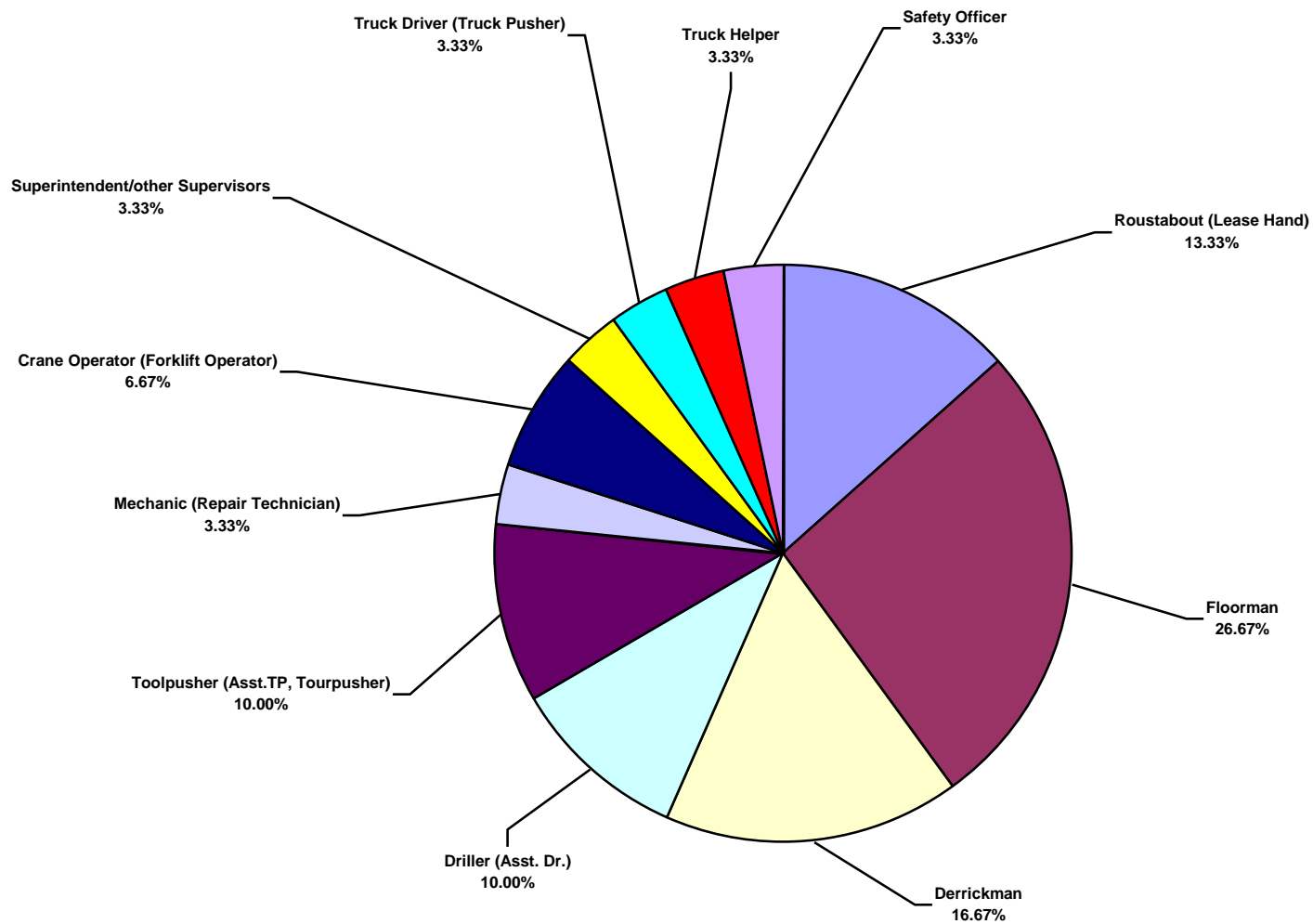
South America Land Total Recordable Incidents by Month (Chart 2)
Based on 30 Incidents



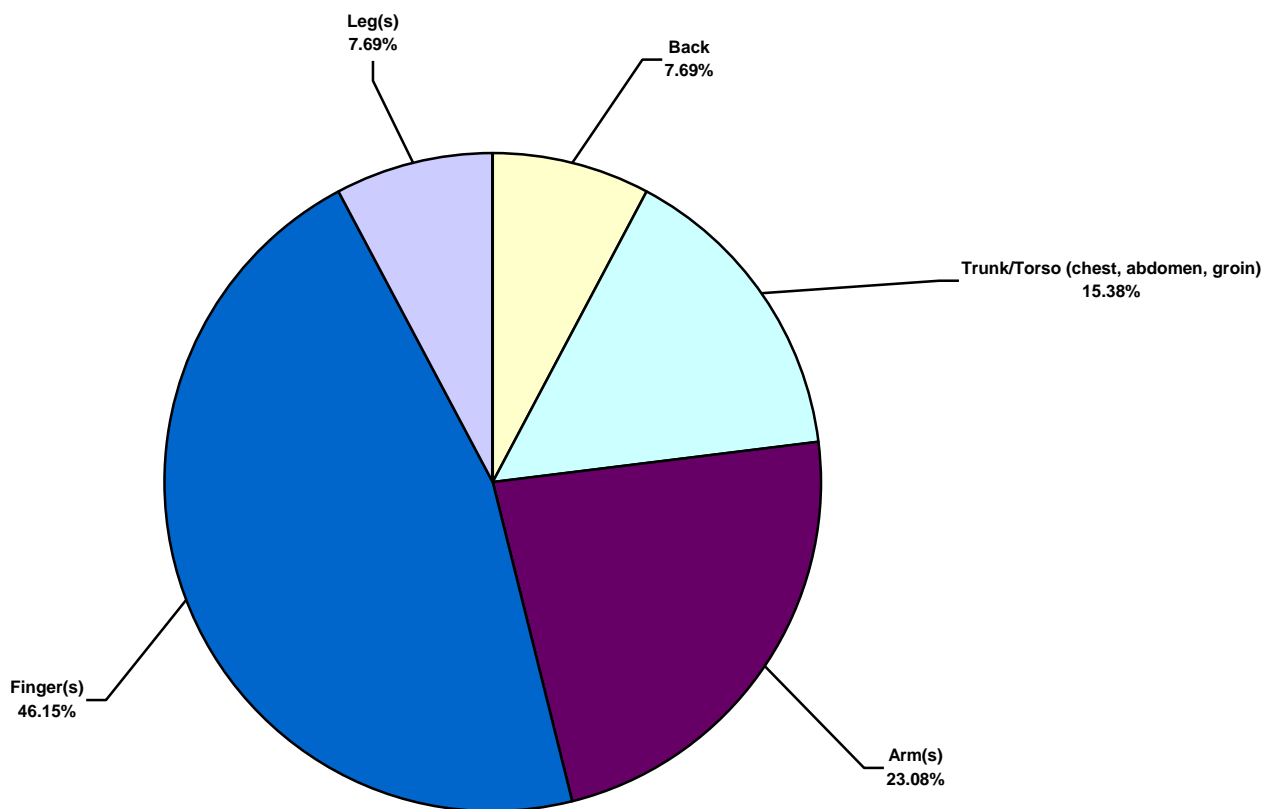
South America Land Total Lost Time Incidents by Occupation (Chart 3)
Based on 13 Incidents



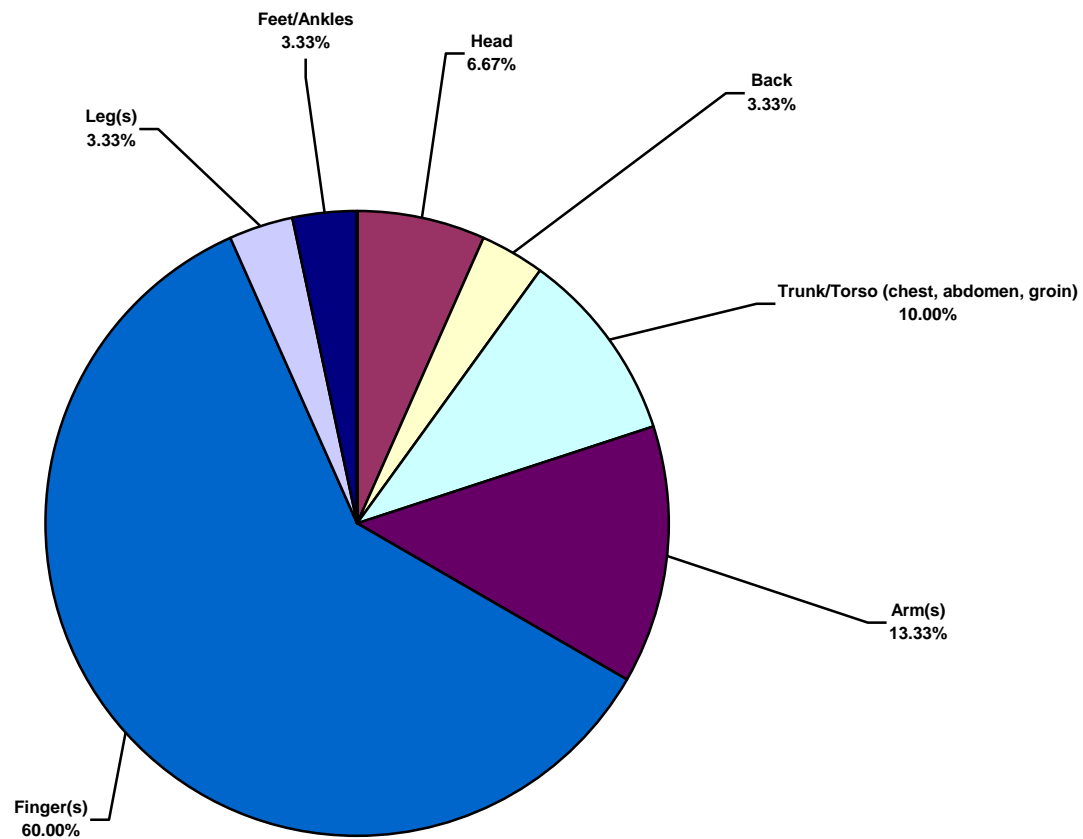
South America Land Total Recordable Incidents by Occupation (Chart 4)
Based on 30 Incidents



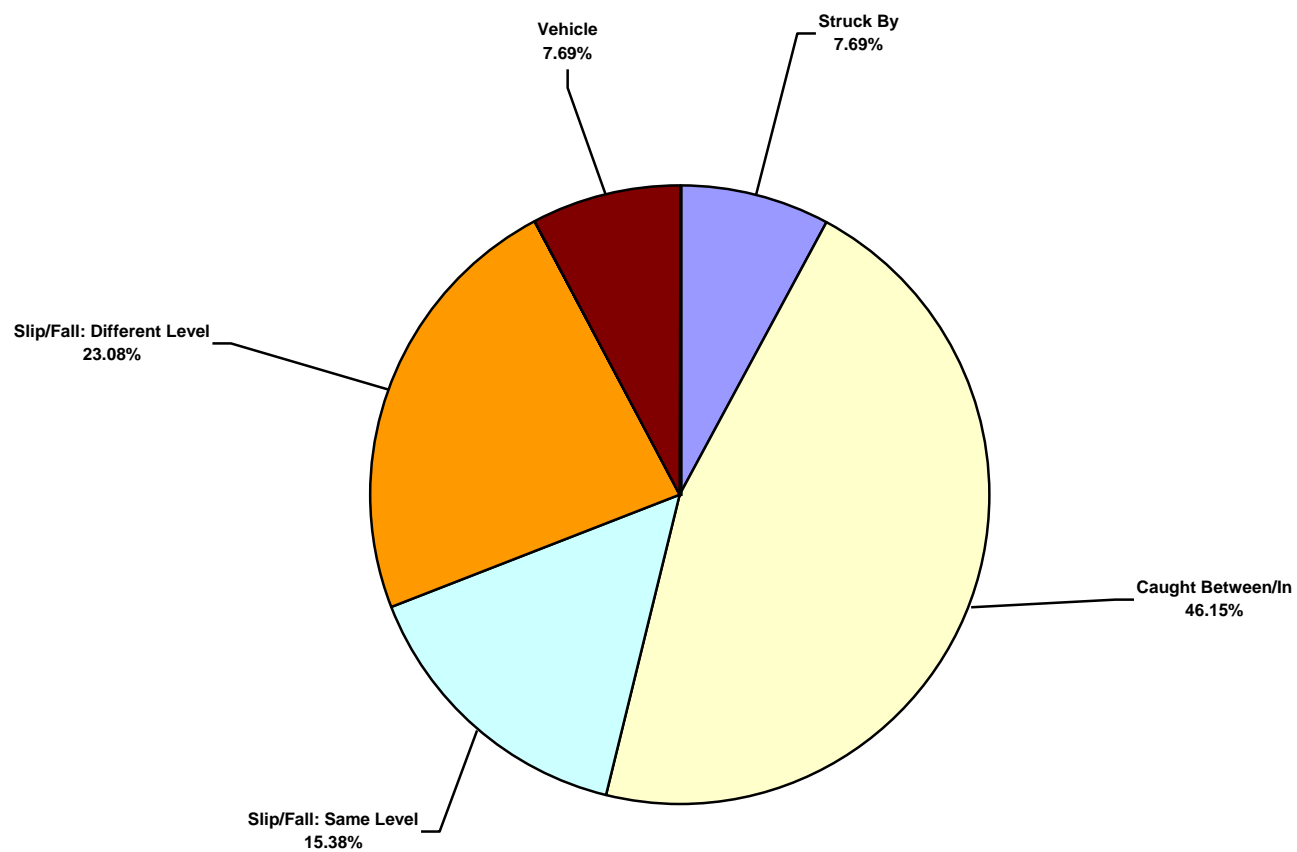
South America Land Total Lost Time Incidents by Body Part (Chart 5)
Based on 13 Incidents



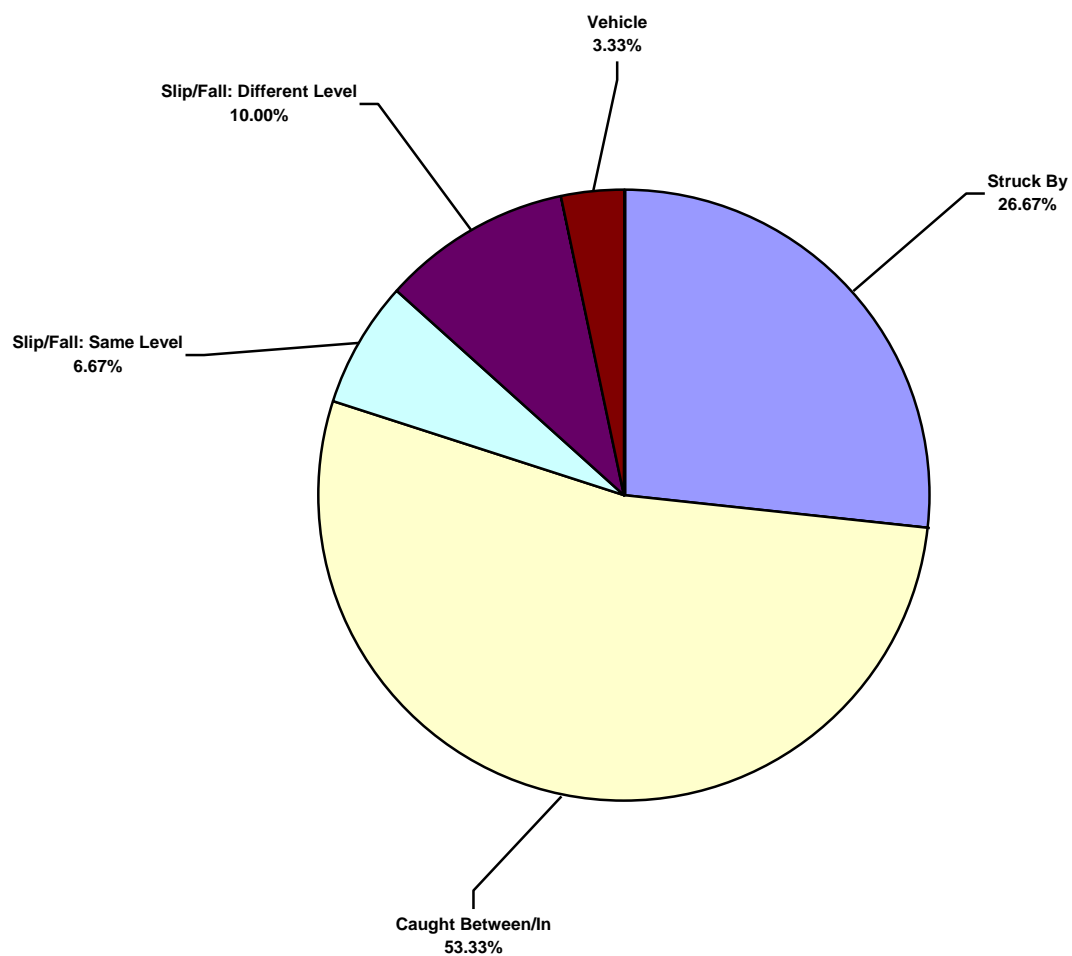
South America Land Total Recordable Incidents by Body Part (Chart 6)
Based on 30 Incidents



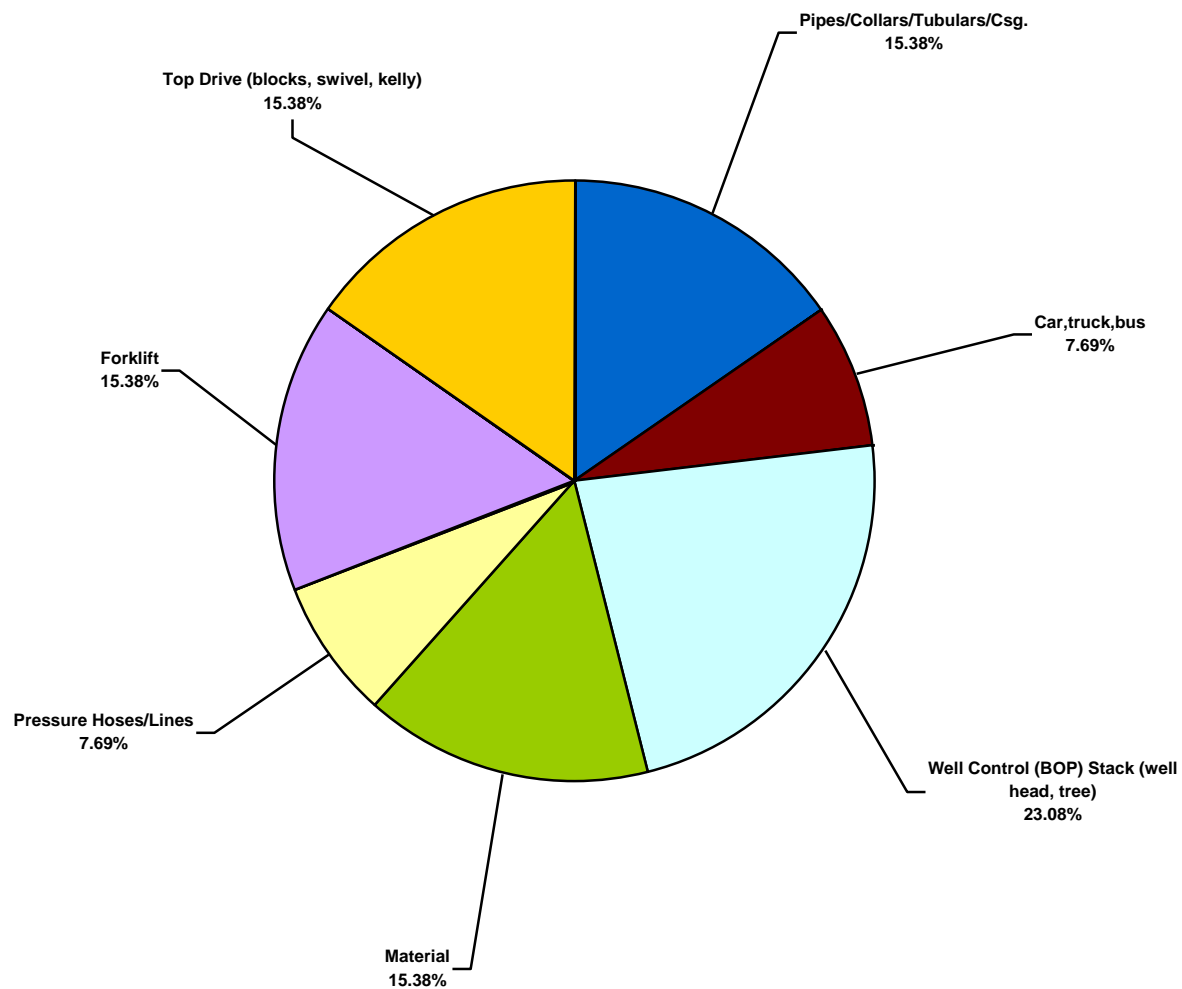
South America Land Total Lost Time Incidents by Incident Type (Chart 7)
Based on 13 Incidents



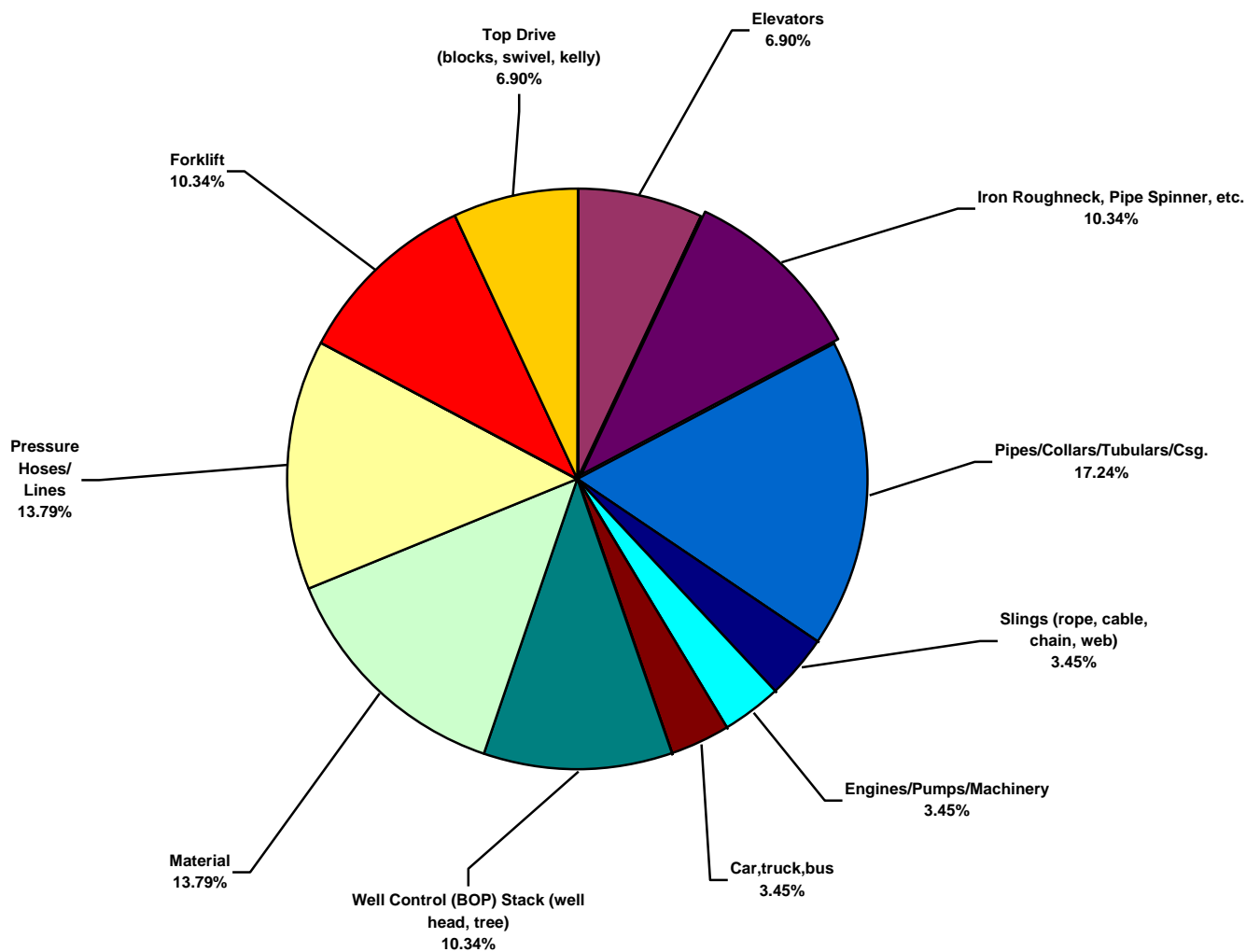
South America Land Total Recordable Incidents by Incident Type (Chart 8)
Based on 30 Incidents



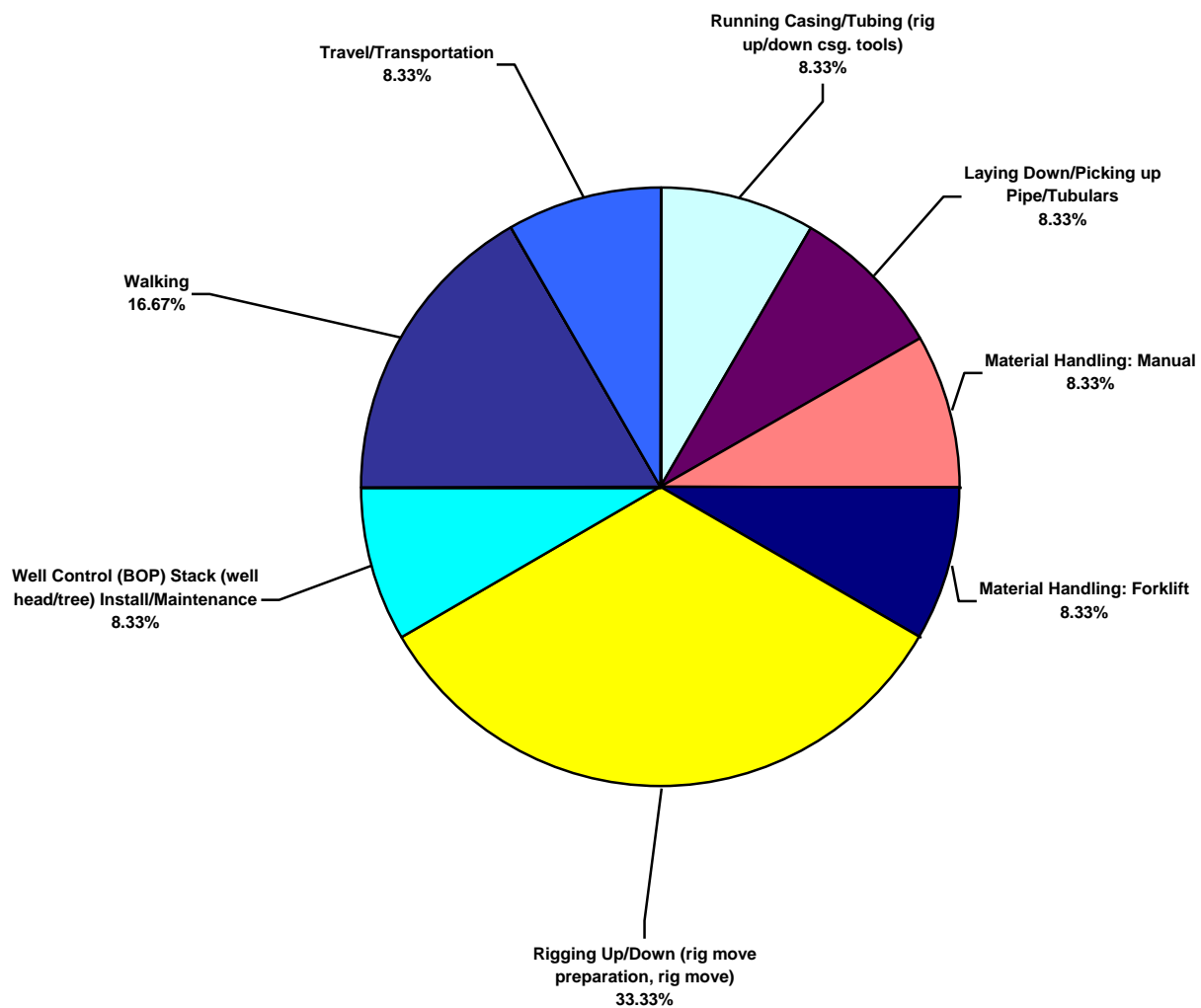
South America Land Total Lost Time Incidents by Equipment (Chart 9)
Based on 13 Incidents



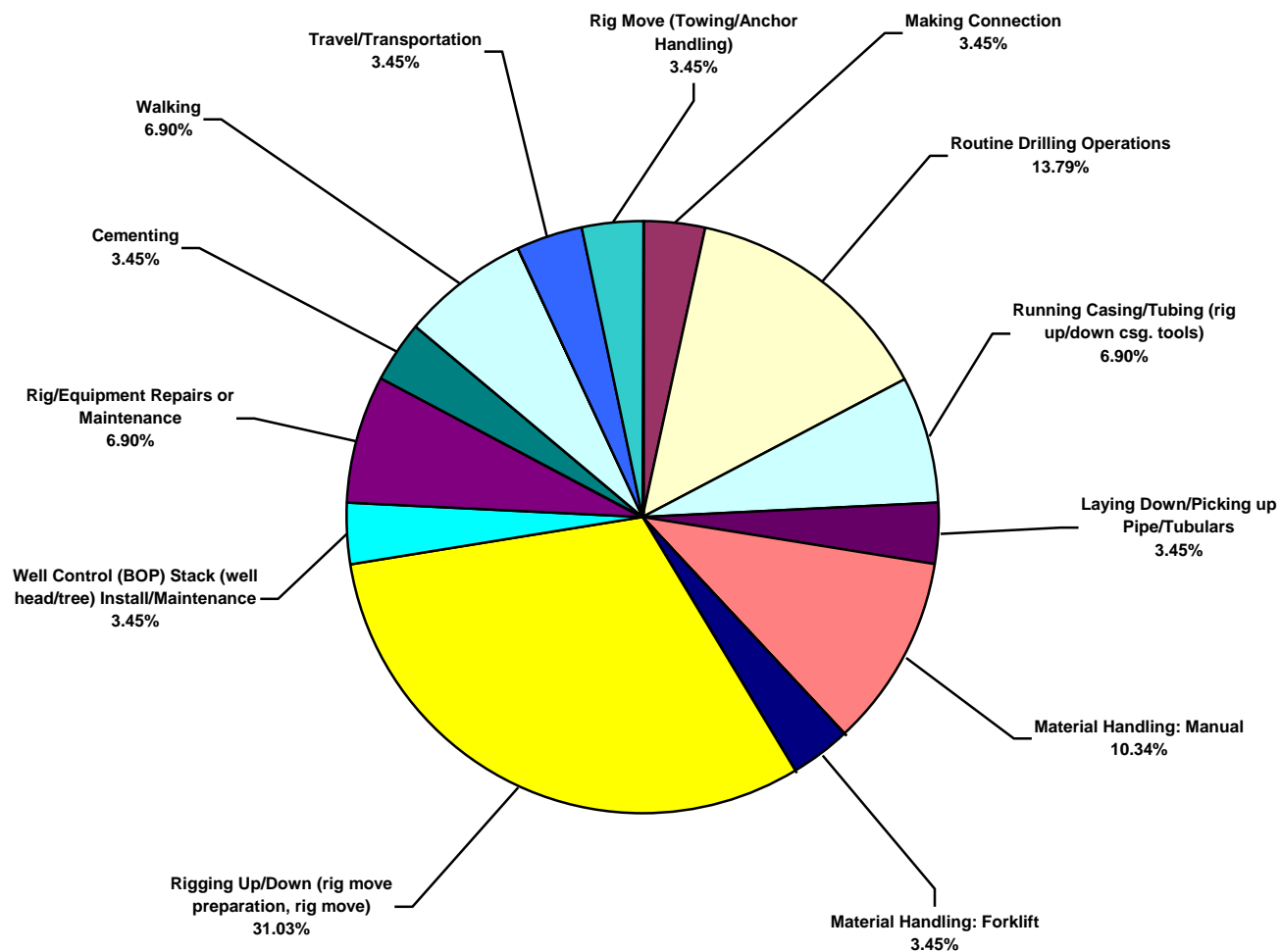
South America Land Total Recordable Incidents by Equipment (Chart 10)
Based on 29 Incidents



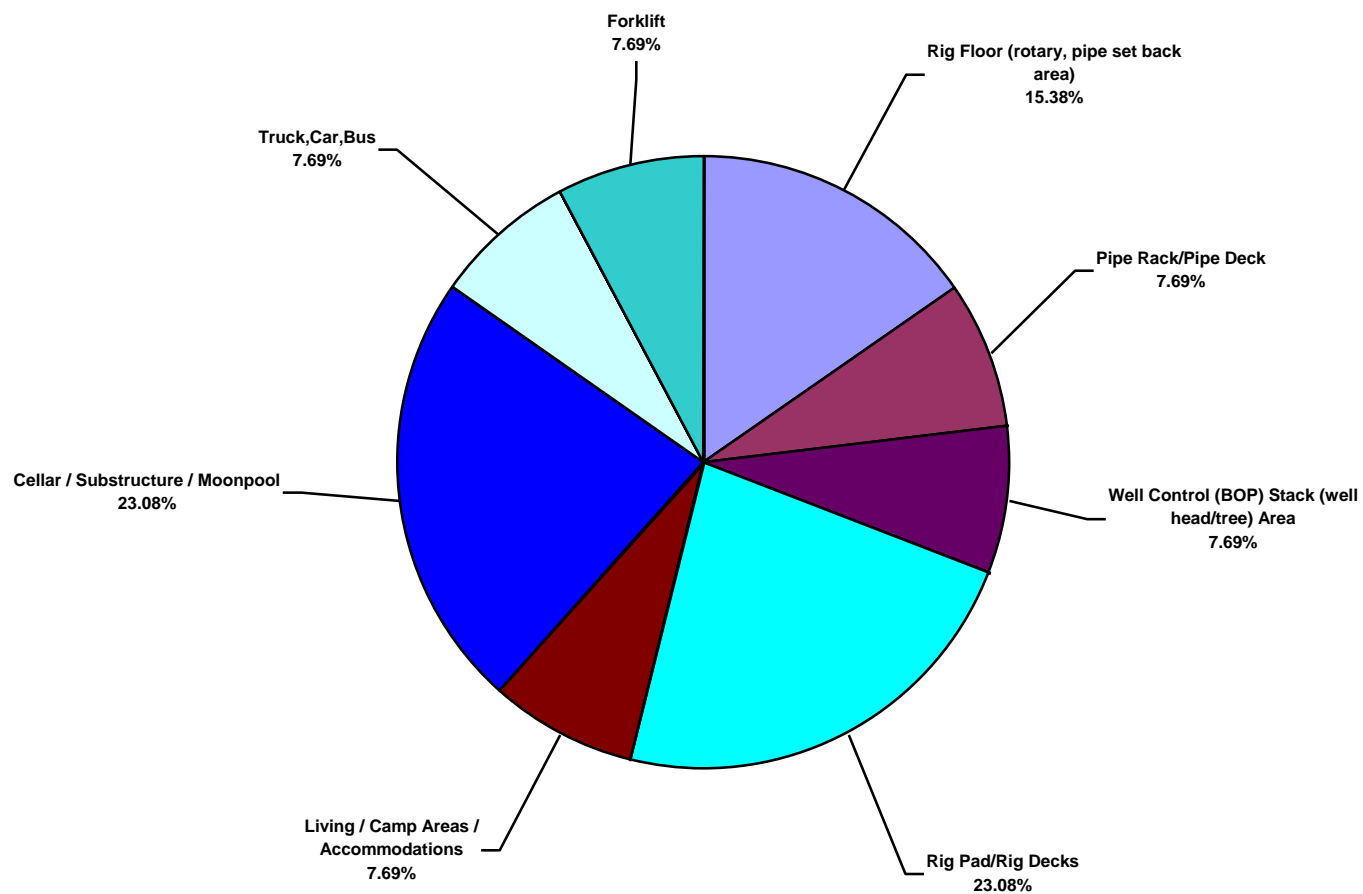
South America Land Total Lost Time Incidents by Operation (Chart 11)
Based on 12 Incidents



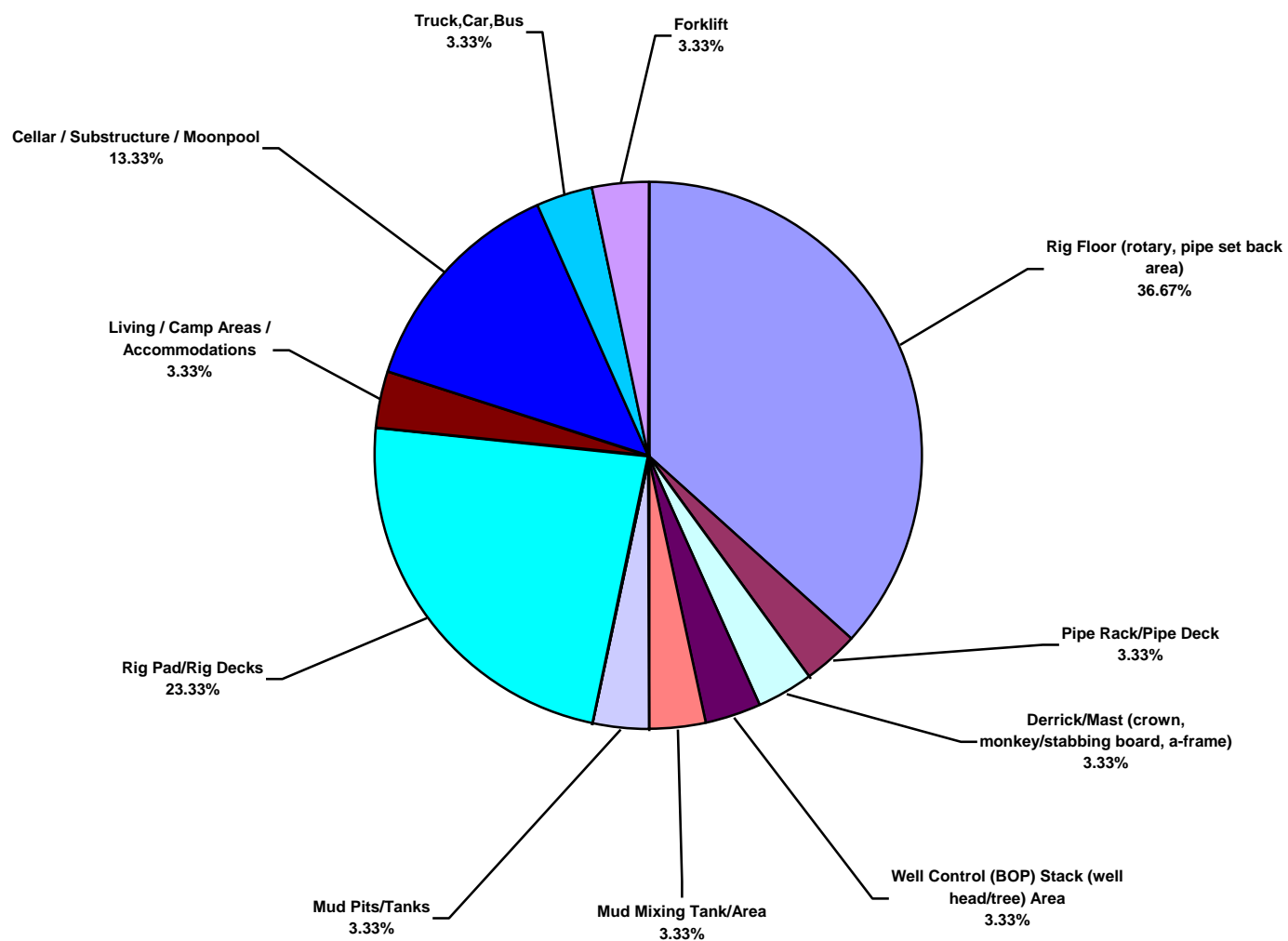
South America Land Total Recordable Incidents by Operation (Chart 12)
Based on 29 Incidents



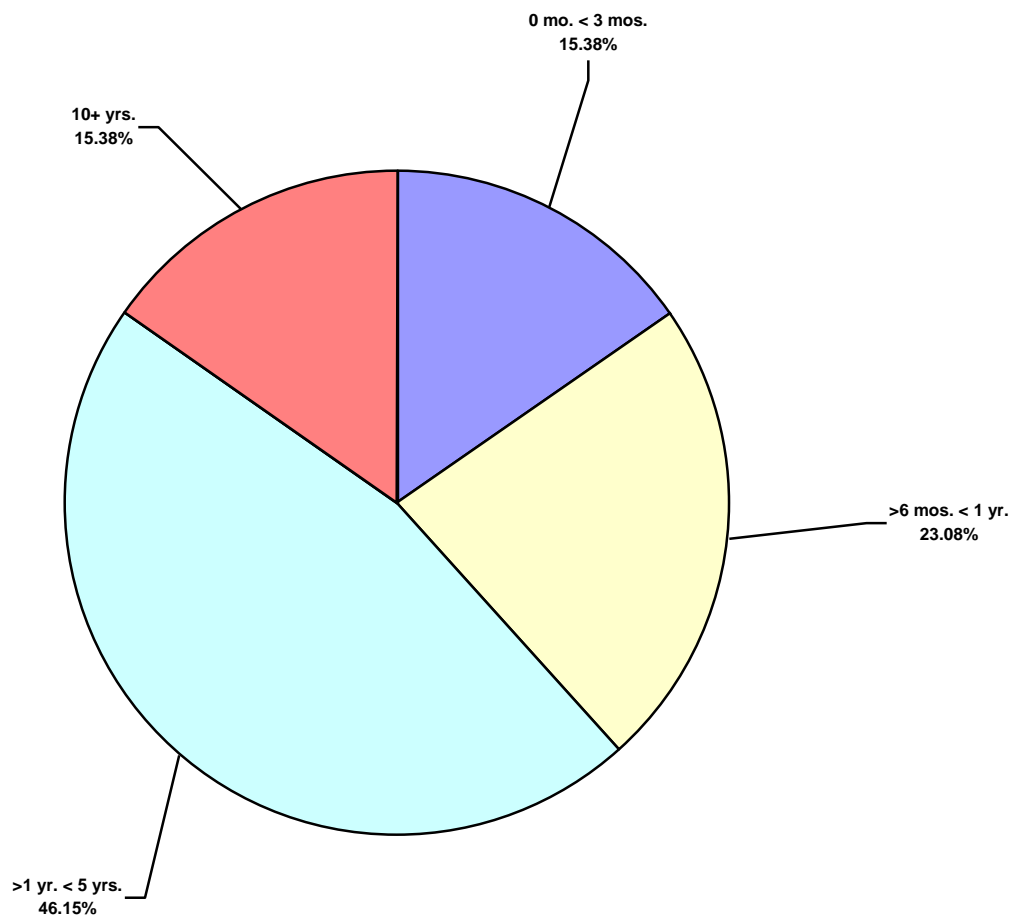
South America Land Total Lost Time Incidents by Location (Chart 13)
Based on 13 Incidents



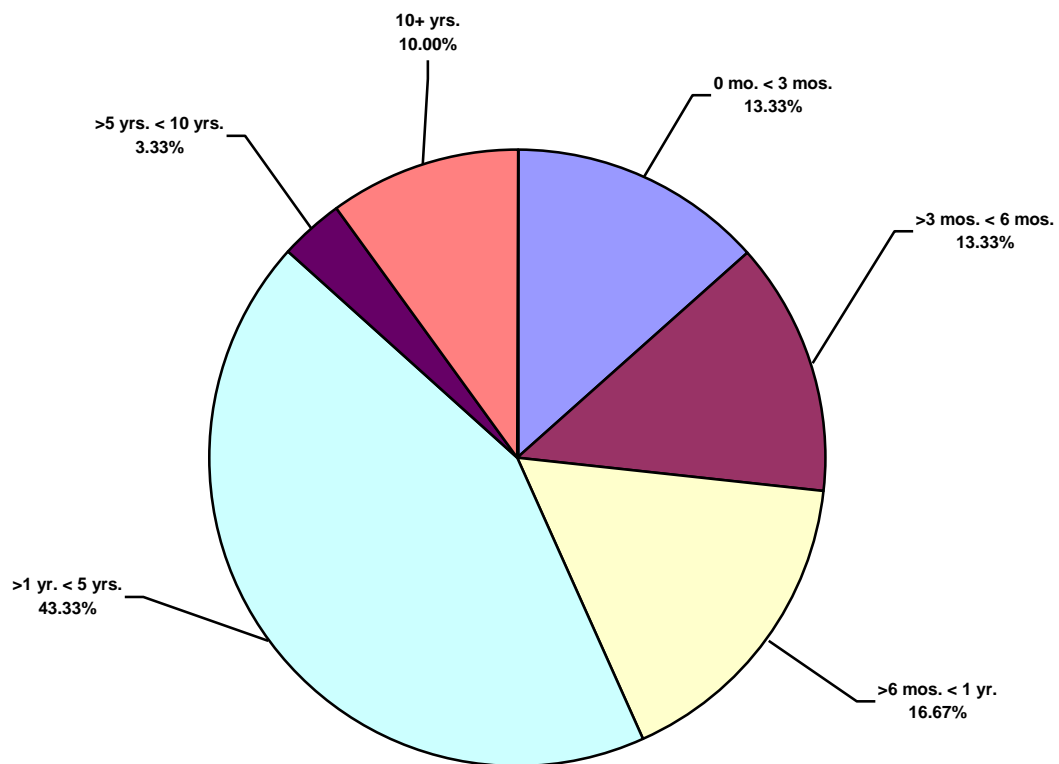
South America Land Total Recordable Incidents by Location (Chart 14)
Based on 30 Incidents



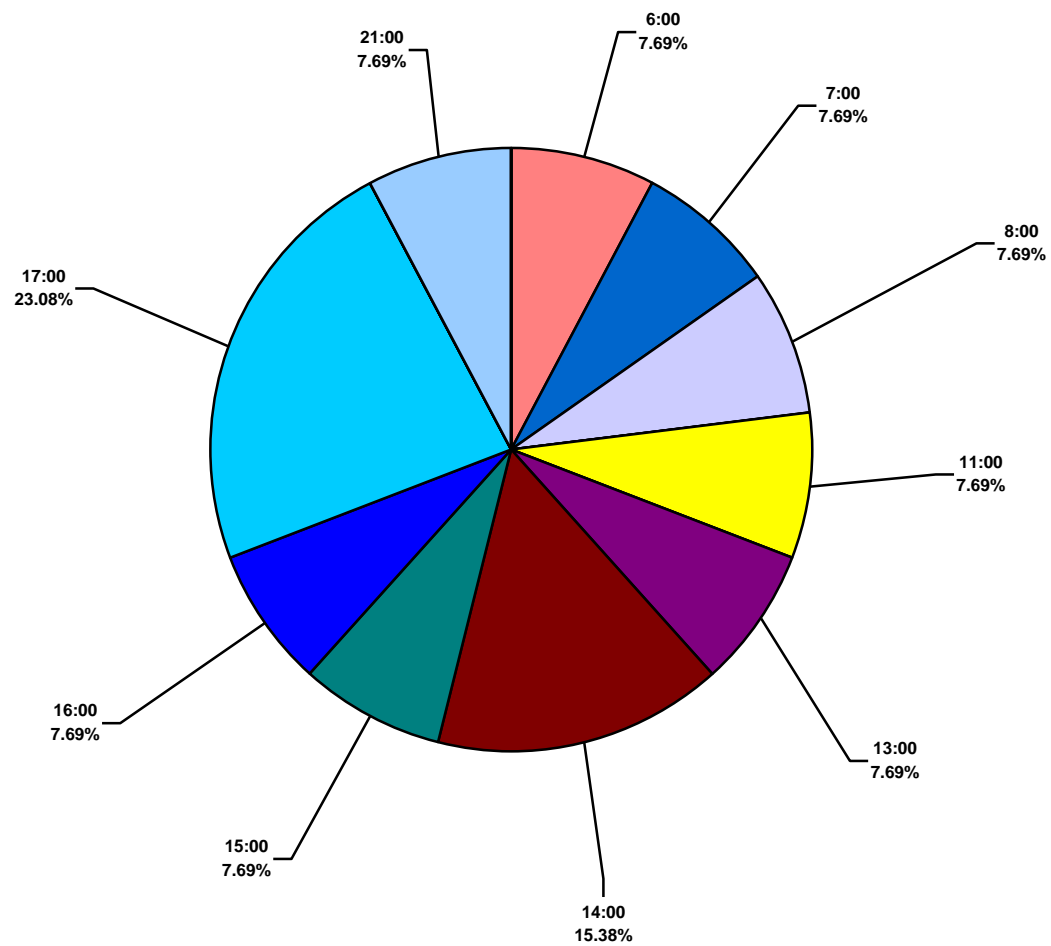
South America Land Total Lost Time Incidents by Time in Service (Chart 15)
Based on 13 Incidents



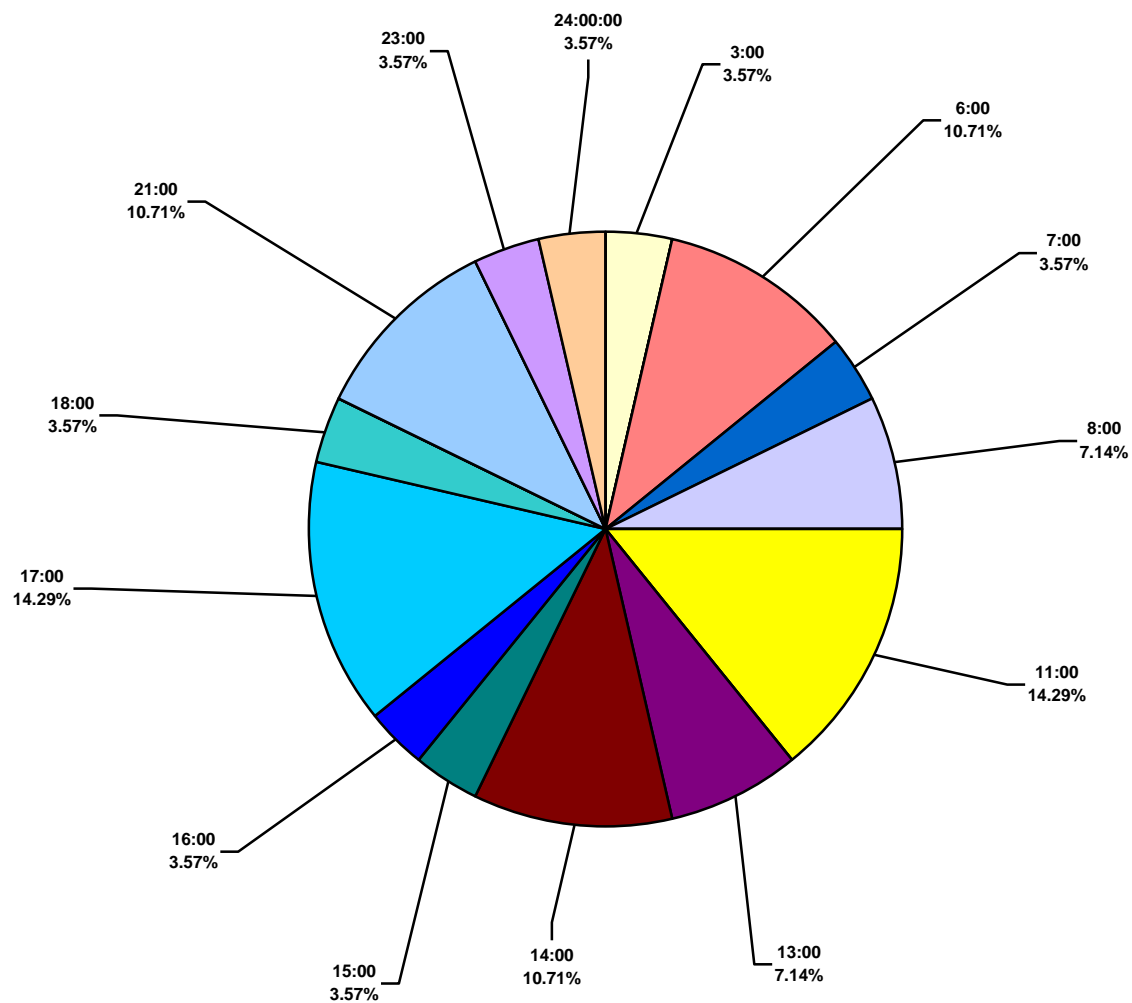
South America Land Total Recordable Incidents by Time in Service (Chart 16)
Based on 30 Incidents



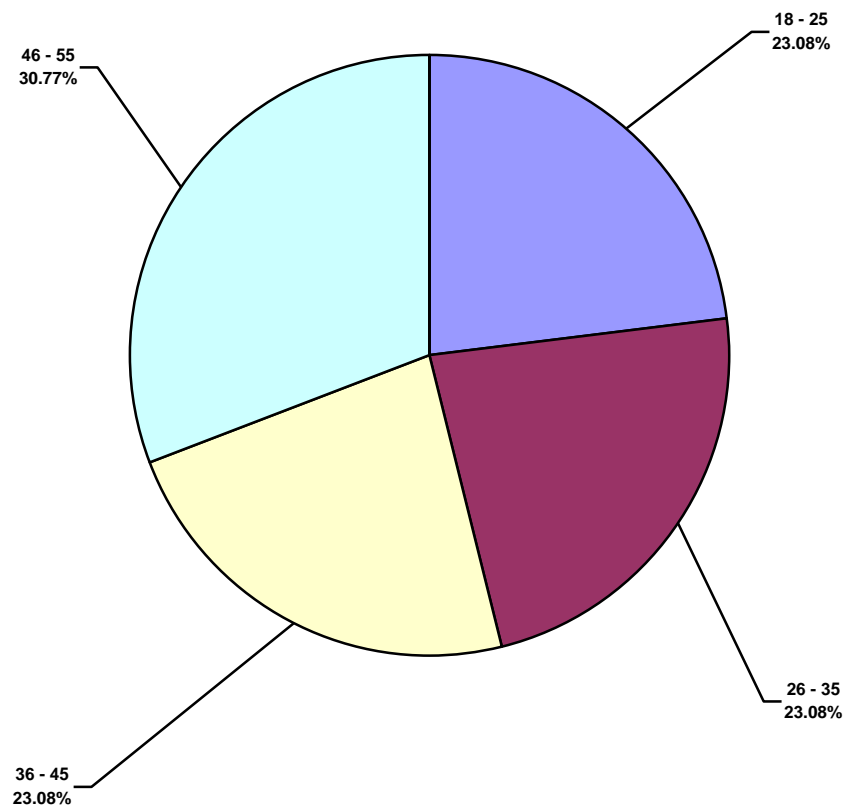
South America Land Total Lost Time Incidents by Time of Day (Chart 17)
Based on 13 Incidents



South America Land Total Recordable Incidents by Time of Day (Chart 18)
Based on 29 Incidents



South America Land Total Lost Time Incidents by Age (Chart 19)
Based on 13 Incidents



South America Land Total Recordable Incidents by Age (Chart 20)
Based on 24 Incidents

