



IADC

**IADC
ISP PROGRAM**

2018



**Summary of Occupational
Incidents
(US Water Totals)**

Issued 15 June 2019

Table of Contents

(Table of Contents is Hyperlinked, Just click on Topic & go)

| | |
|--|----|
| IADC 2018 US WATER TOTALS (TABLE 1)..... | 1 |
| <i>US Water Total LTI & Recordable Incidence Rates vs Man-hours (Figure 1)</i> | 1 |
| IADC 2018 US WATER CHARTS | 2 |
| <i>US Water Total Lost Time Incidents by Month (Chart 1)</i> | 2 |
| <i>US Water Total Recordable Incidents by Month (Chart 2)</i> | 3 |
| <i>US Water Total Lost Time Incidents by Occupation (Chart 3)</i> | 4 |
| <i>US Water Total Recordable Incidents by Occupation (Chart 4)</i> | 5 |
| <i>US Water Total Lost Time Incidents by Body Part (Chart 5)</i> | 6 |
| <i>US Water Total Recordable Incidents by Body Part (Chart 6)</i> | 7 |
| <i>US Water Total Lost Time Incidents by Incident Type (Chart 7)</i> | 8 |
| <i>US Water Total Recordable Incidents by Incident Type (Chart 8)</i> | 9 |
| <i>US Water Total Lost Time Incidents by Equipment (Chart 9)</i> | 10 |
| <i>US Water Total Recordable Incidents by Equipment (Chart 10)</i> | 11 |
| <i>US Water Total Lost Time Incidents by Operation (Chart 11)</i> | 12 |
| <i>US Water Total Recordable Incidents by Operation (Chart 12)</i> | 13 |
| <i>US Water Total Lost Time Incidents by Location (Chart 13)</i> | 14 |
| <i>US Water Total Recordable Incidents by Location (Chart 14)</i> | 15 |
| <i>US Water Total Lost Time Incidents by Time in Service (Chart 15)</i> | 16 |
| <i>US Water Total Recordable Incidents by Time in Service (Chart 16)</i> | 17 |
| <i>US Water Total Lost Time Incidents by Time of Day (Chart 17)</i> | 18 |
| <i>US Water Total Recordable Incidents by Time of Day (Chart 18)</i> | 19 |
| <i>US Water Total Lost Time Incidents by Age (Chart 19)</i> | 20 |
| <i>US Water Total Recordable Incidents by Age (Chart 20)</i> | 21 |

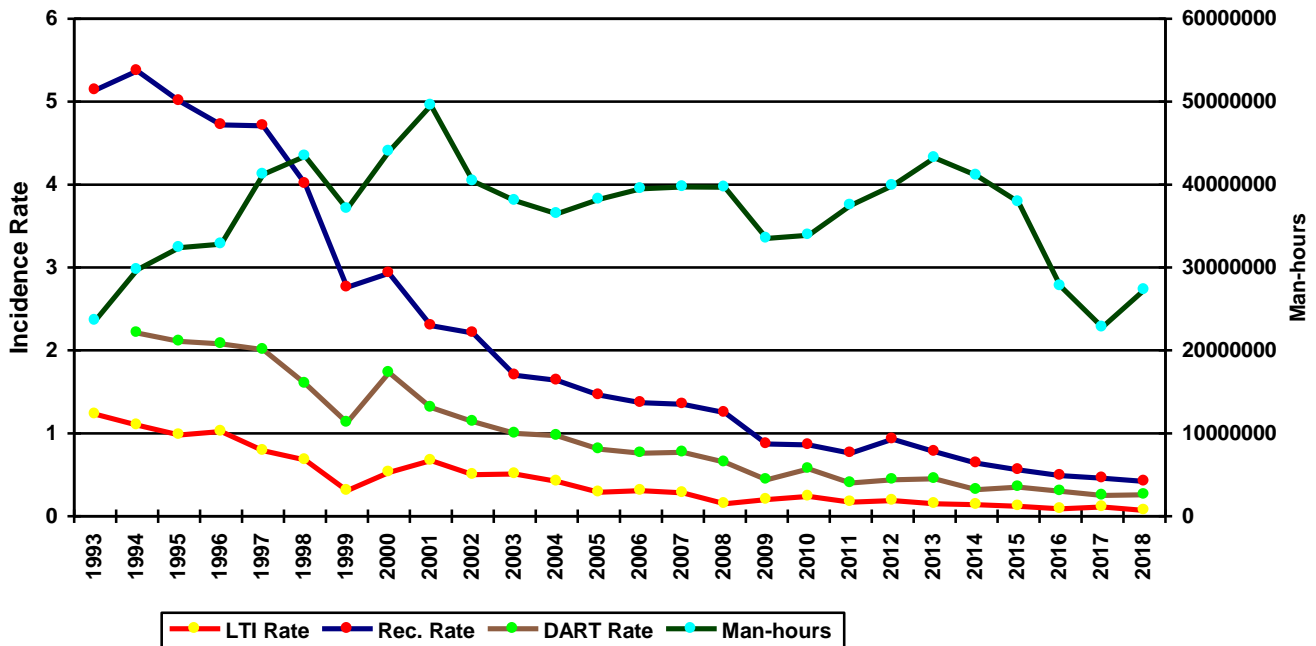
IADC 2018 US Water Totals (Table 1)

| | <u>Total</u> |
|--|-------------------|
| Total Man-hours | 27,298,979 |
| Total Medical Treatment Incidents | 23 |
| Total Restricted Work Incidents | 25 |
| Total Lost Time Incidents | 10 |
| Total Fatalities | 0 |
| Total Recordables | 58 |
| | |
| MTO Incidence Rate | 0.17 |
| RWC Incidence Rate | 0.18 |
| LTI Incidence Rate | 0.07 |
| LTI Frequency Rate | 0.37 |
| DART Incidence Rate | 0.26 |
| DART Frequency Rate | 1.28 |
| Recordable Incidence Rate | 0.42 |
| Recordable Frequency Rate | 2.12 |

Companies Reporting: Water – 15

Medical Treatment Incidence Rate = MTOs X 200,000
 Restricted Work Incidence Rate = RWCs X 200,000
 Lost Time Incidence Rate = LTIs + FTLs X 200,000
 DART Incidence Rate = LTIs + RWC X 200,000
 Recordable Incidence Rate = RCRD X 200,000
 Lost Time Frequency Rate = LTIs +FTLs X 1,000,000
 DART Frequency Rate = LTIs + RWC X 1,000,000
 Recordable Frequency Rate = RCRD X 1,000,000

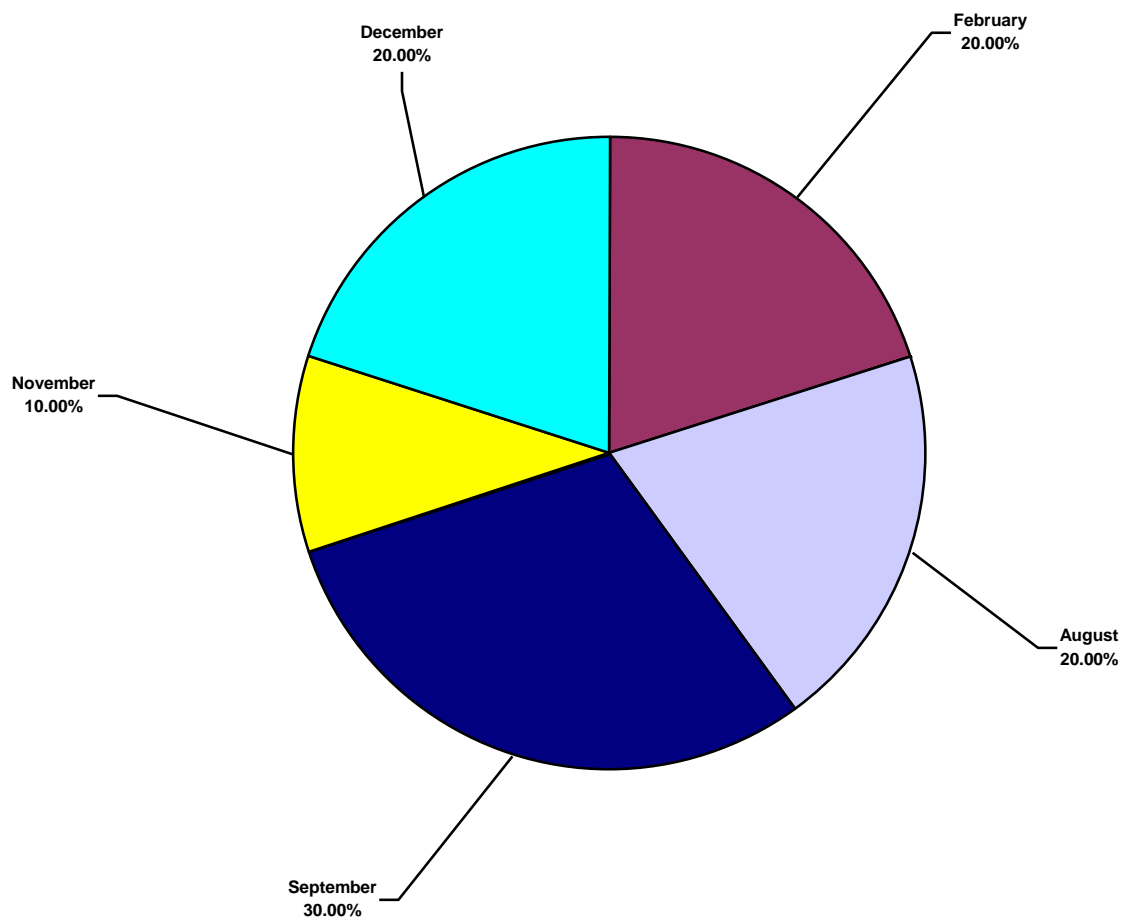
US Water Total LTI & Recordable Incidence Rates vs Man-hours (Figure 1)



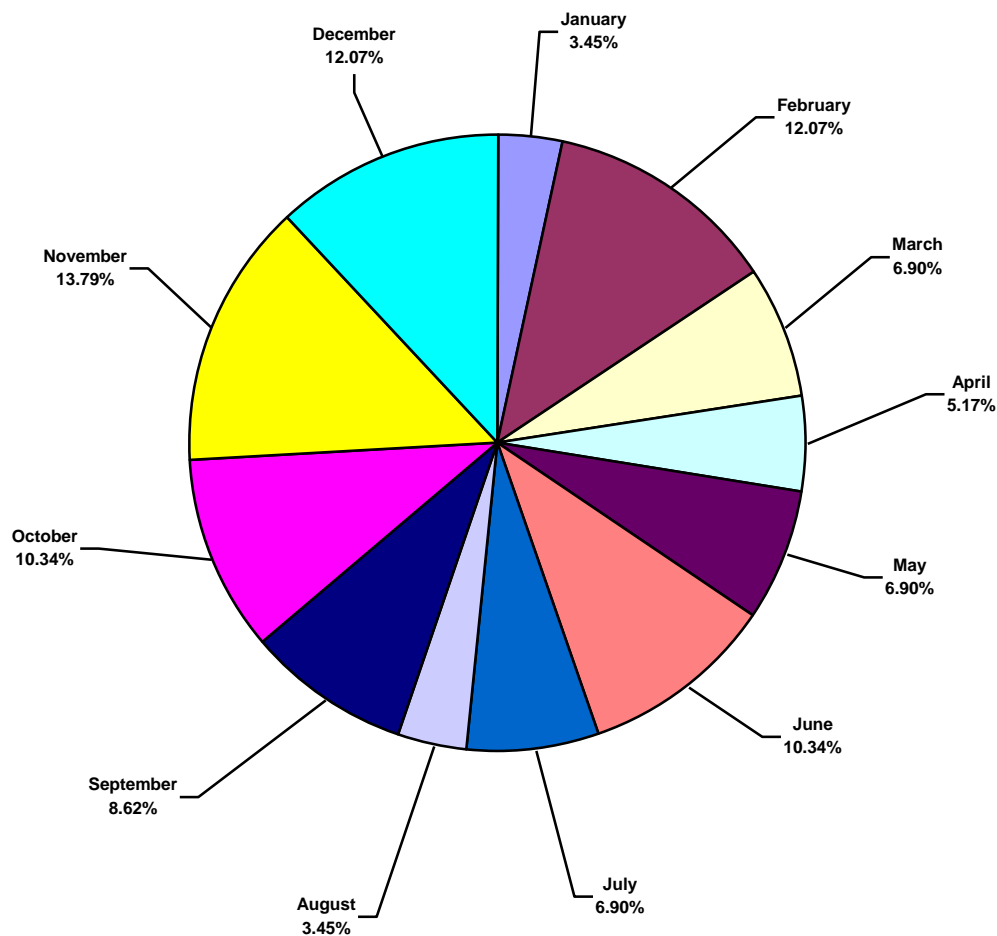
IADC 2018 US Water Charts

US Water Total Lost Time Incidents by Month (Chart 1)

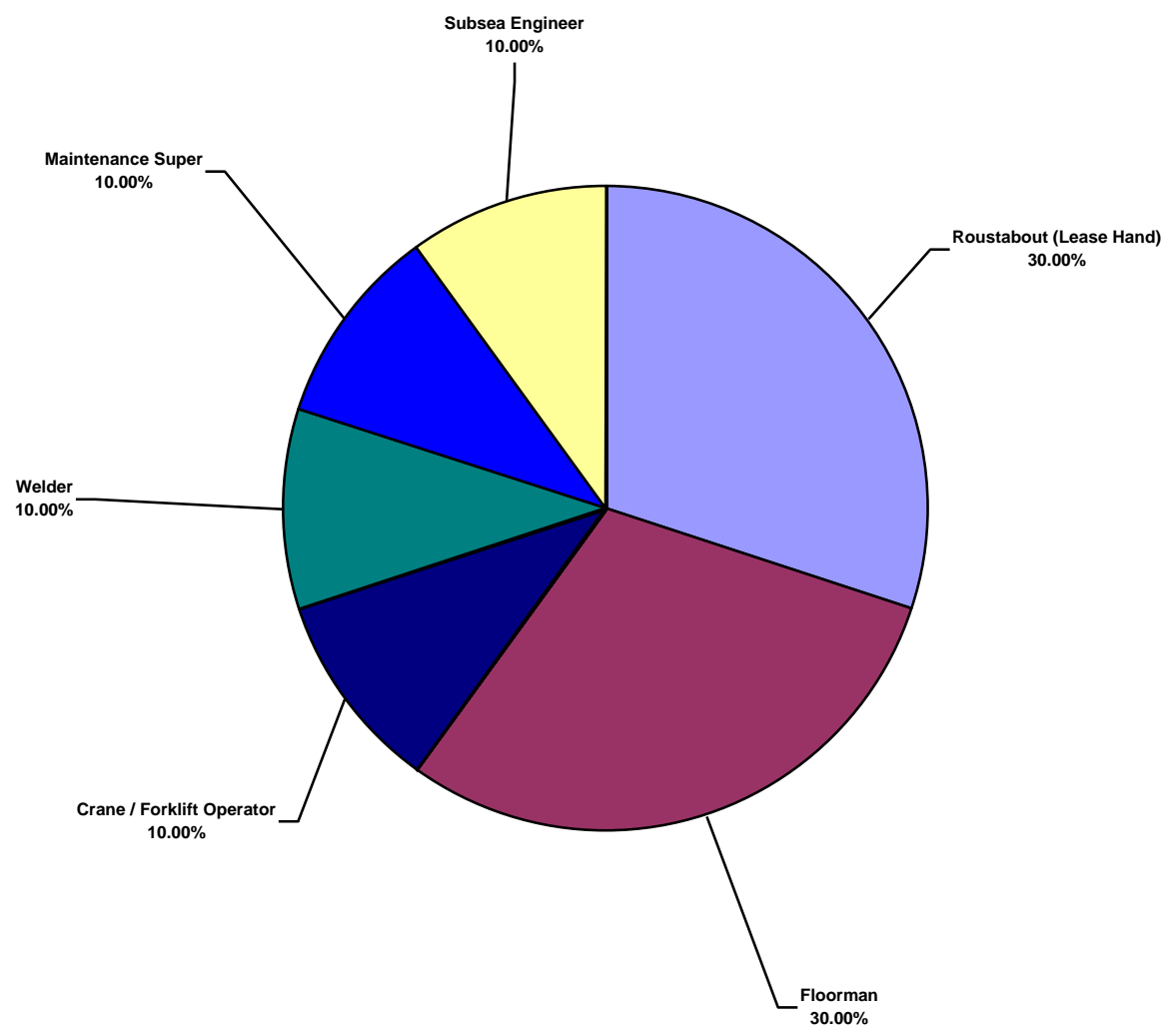
Based on 10 Incidents



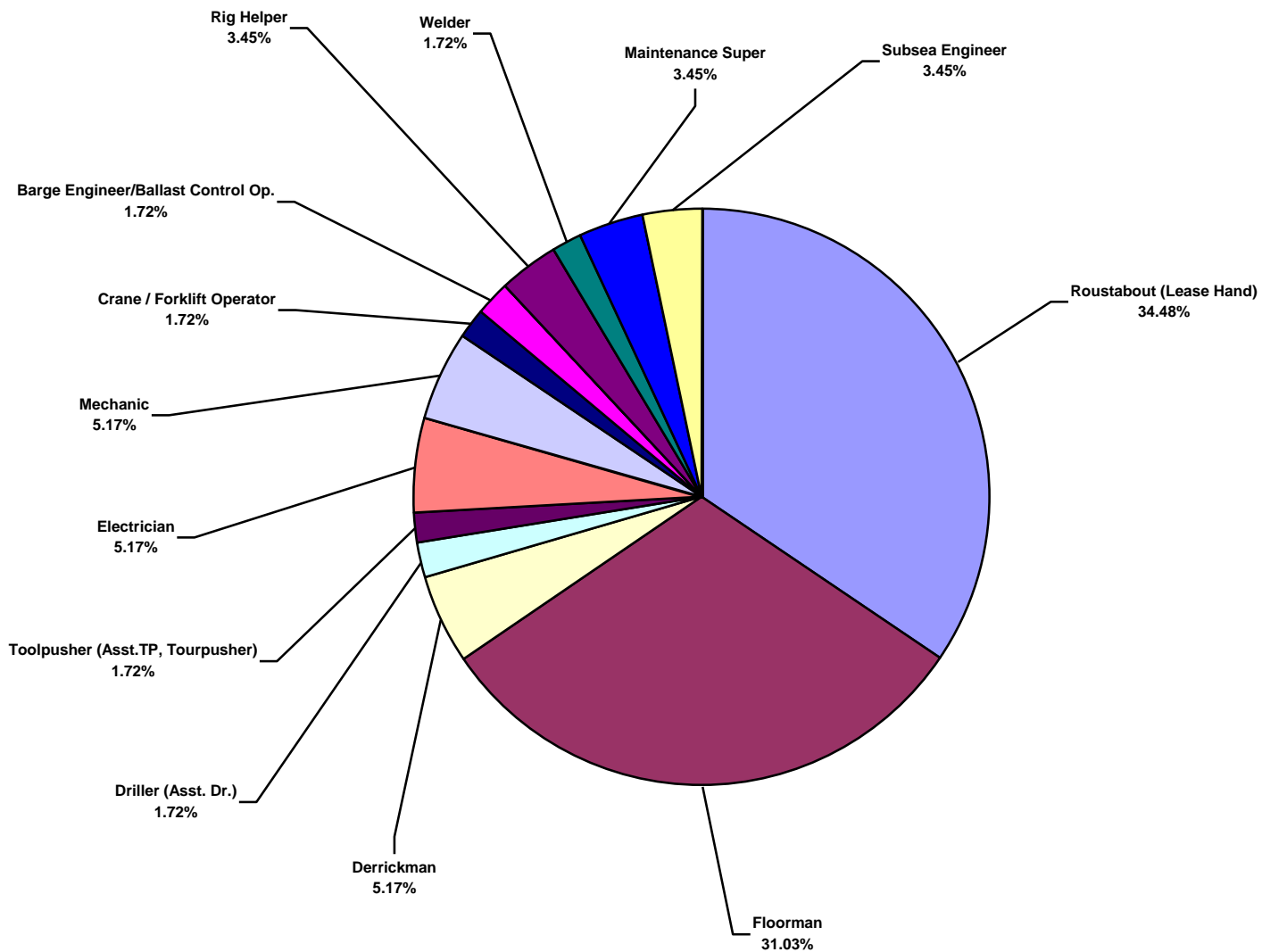
US Water Total Recordable Incidents by Month (Chart 2)
Based on 58 Incidents



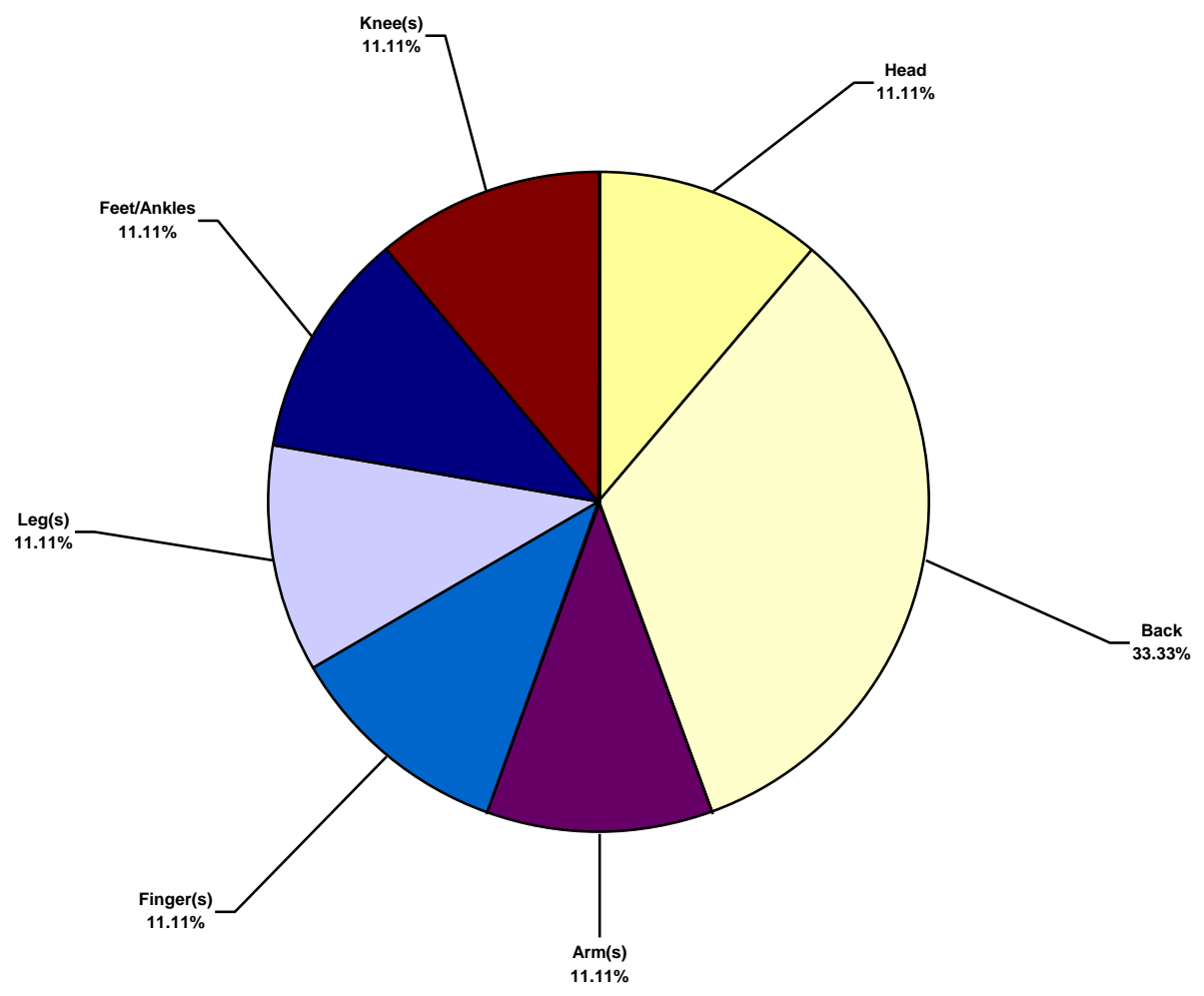
US Water Total Lost Time Incidents by Occupation (Chart 3)
Based on 10 Incidents



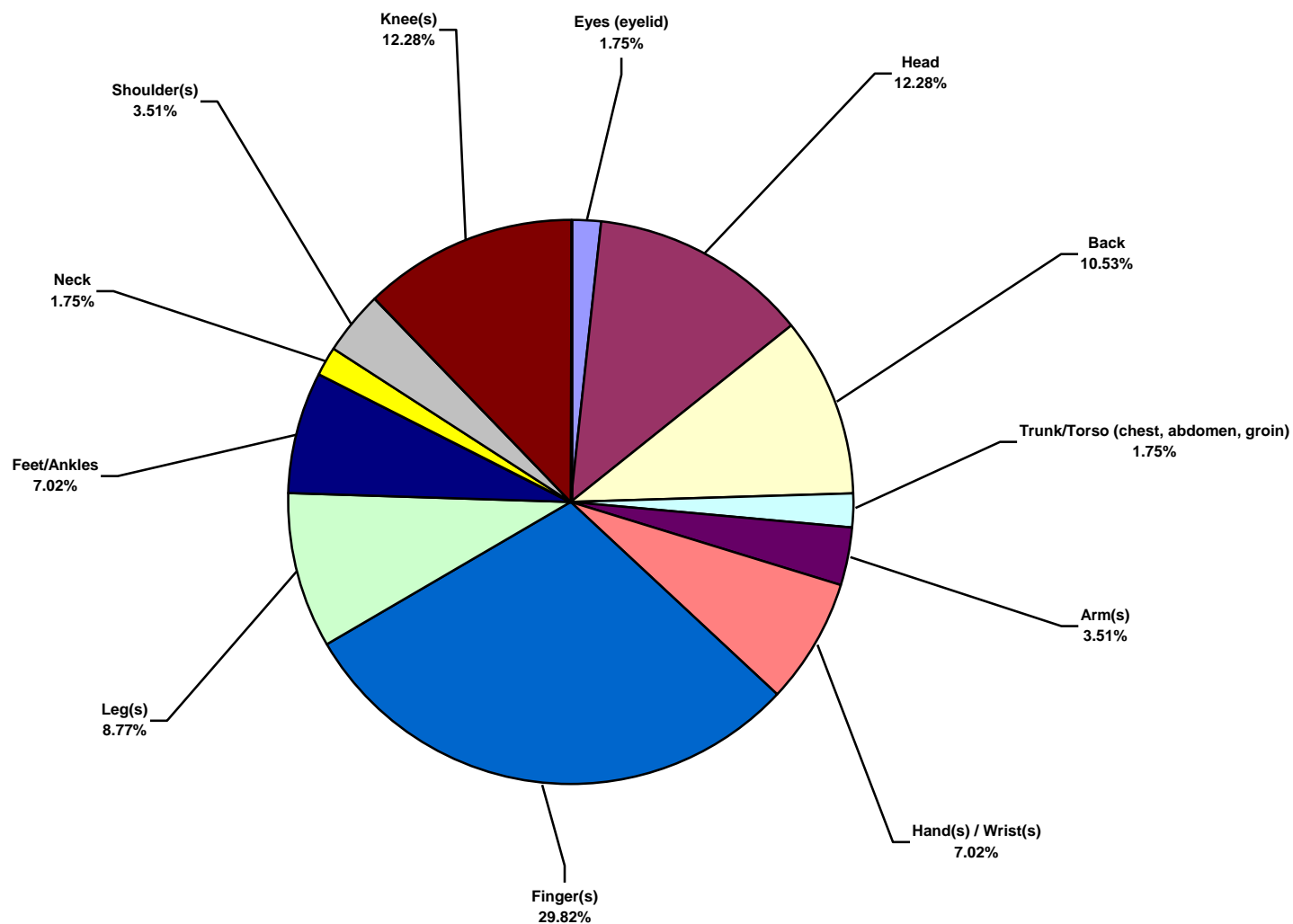
US Water Total Recordable Incidents by Occupation (Chart 4)
Based on 58 Incidents



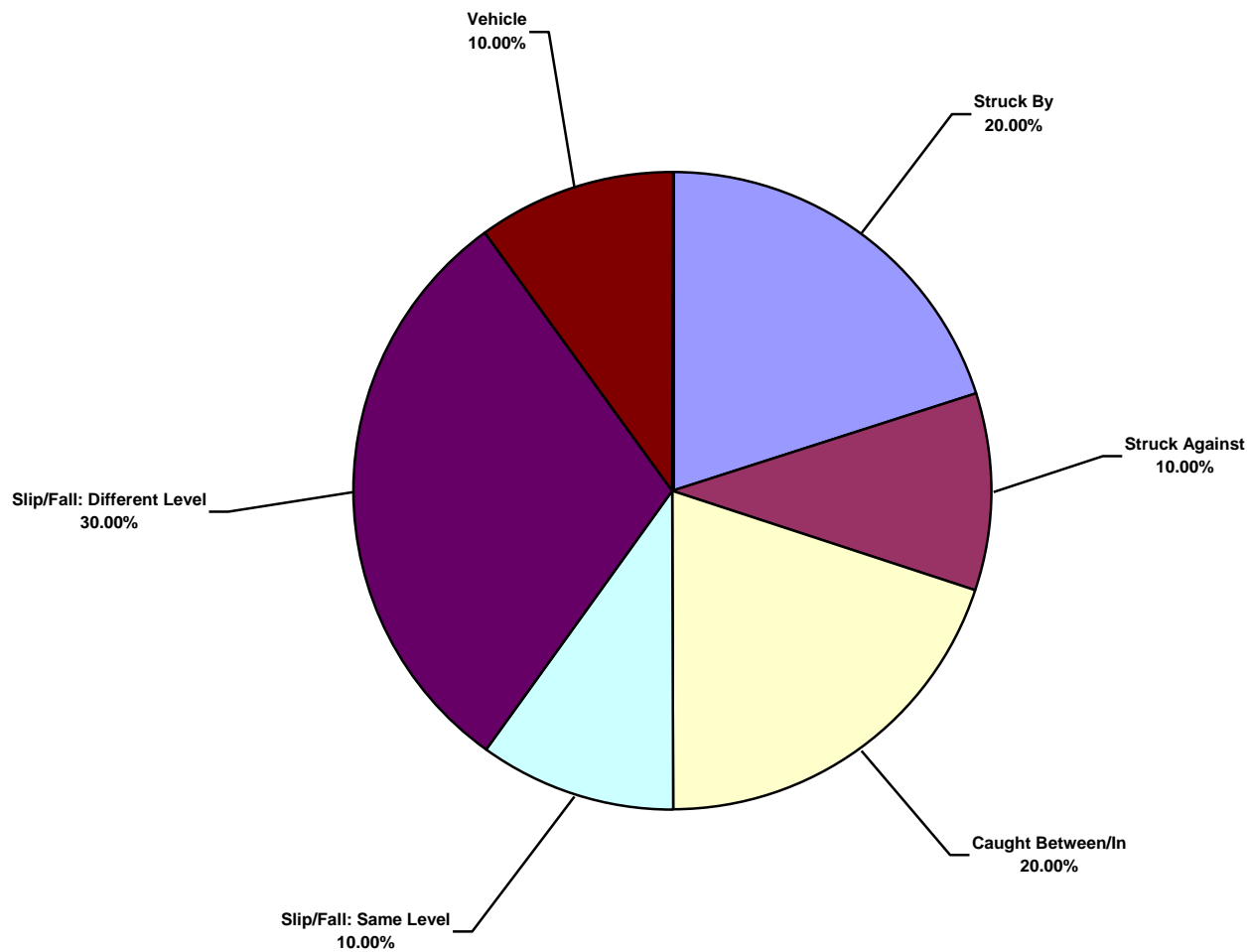
US Water Total Lost Time Incidents by Body Part (Chart 5)
Based on 9 Incidents



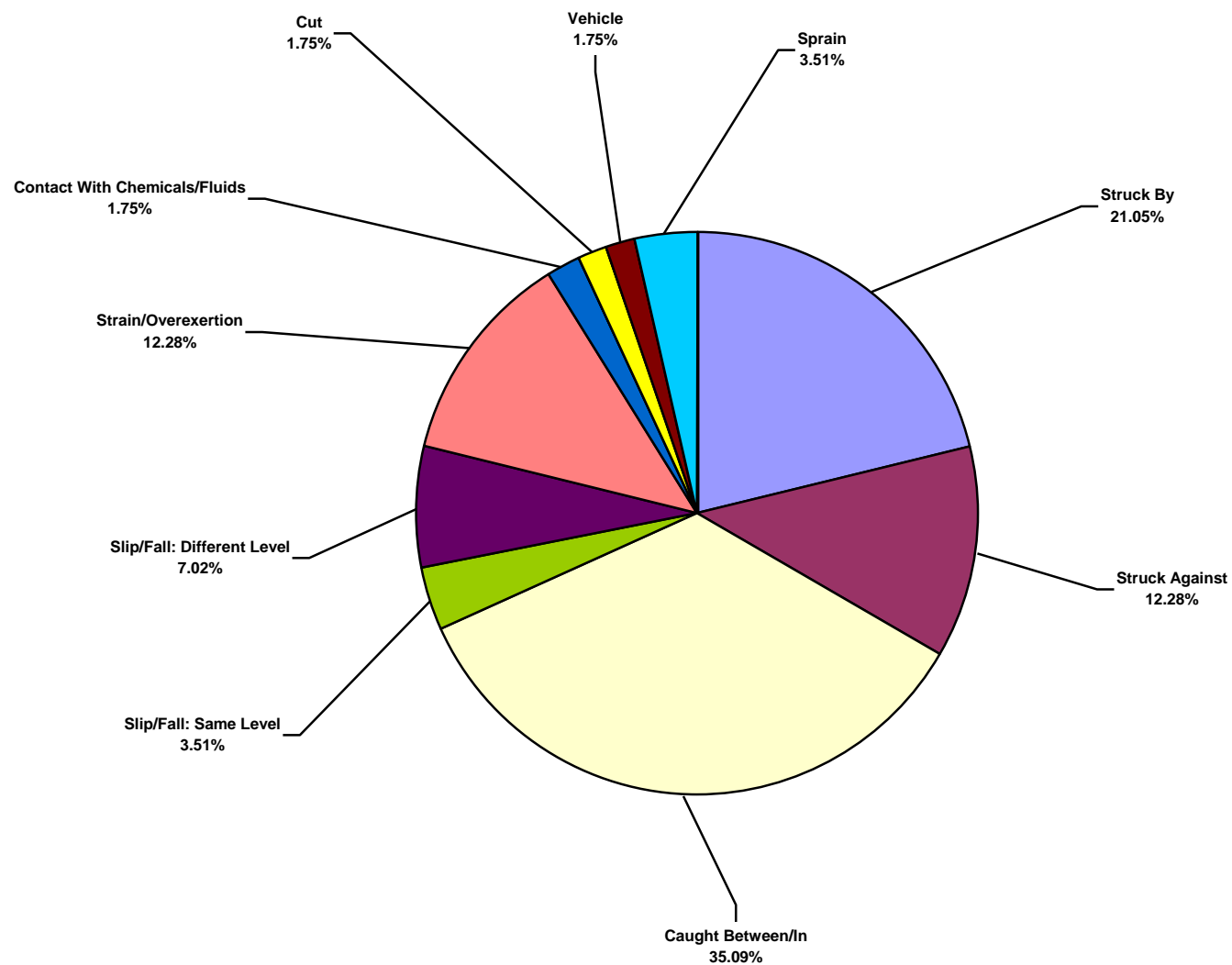
US Water Total Recordable Incidents by Body Part (Chart 6)
Based on 57 Incidents



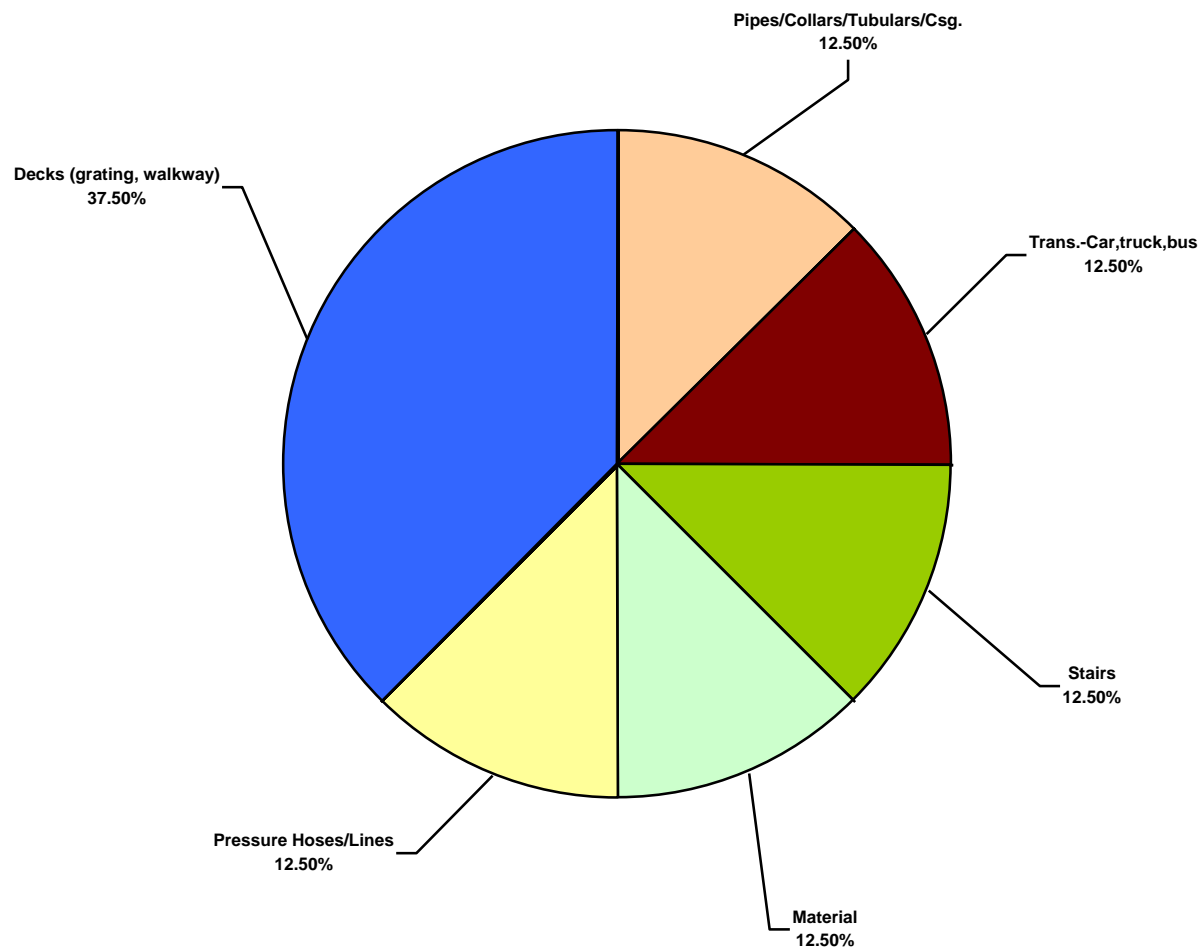
US Water Total Lost Time Incidents by Incident Type (Chart 7)
Based on 10 Incidents



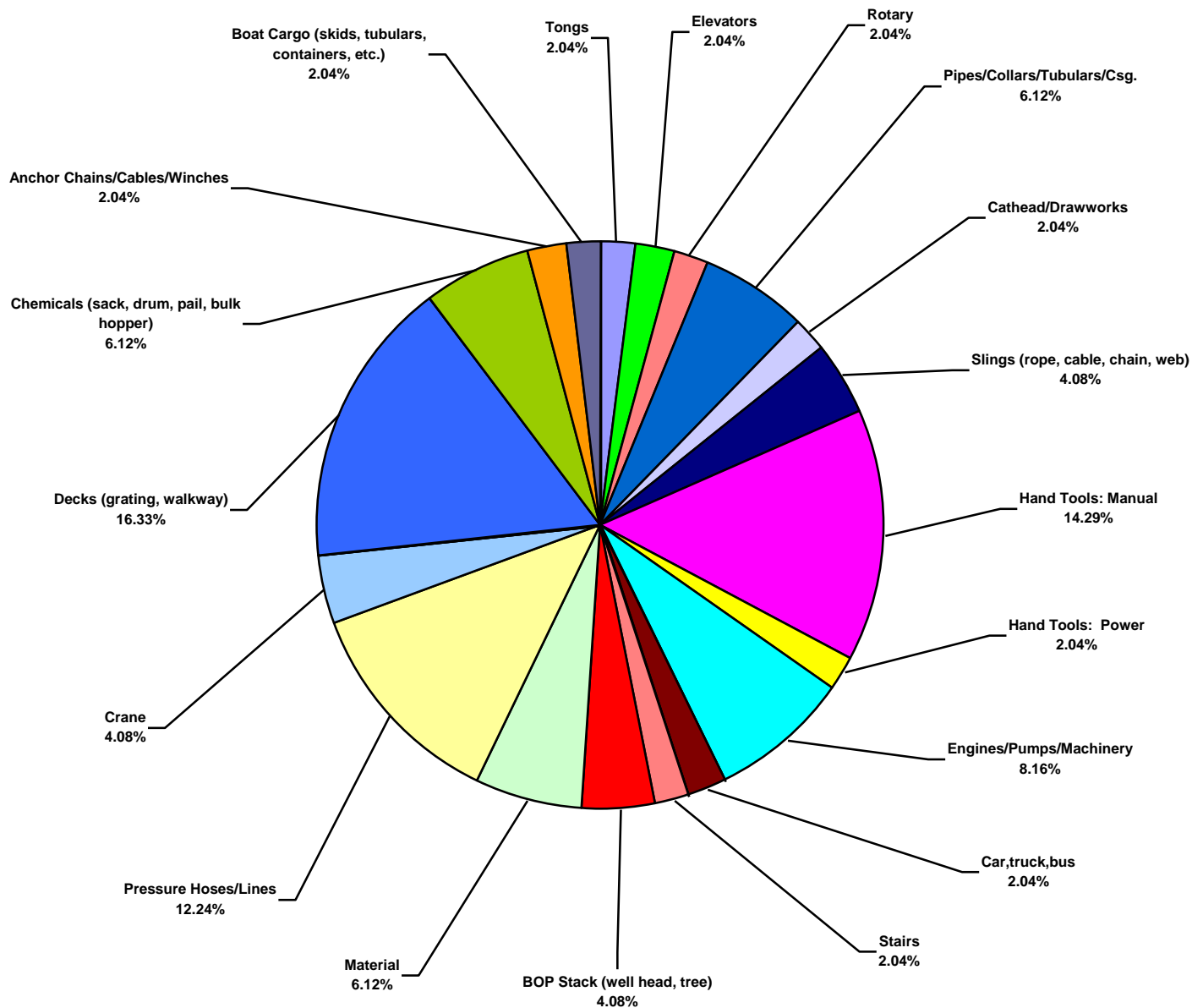
US Water Total Recordable Incidents by Incident Type (Chart 8)
Based on 57 Incidents



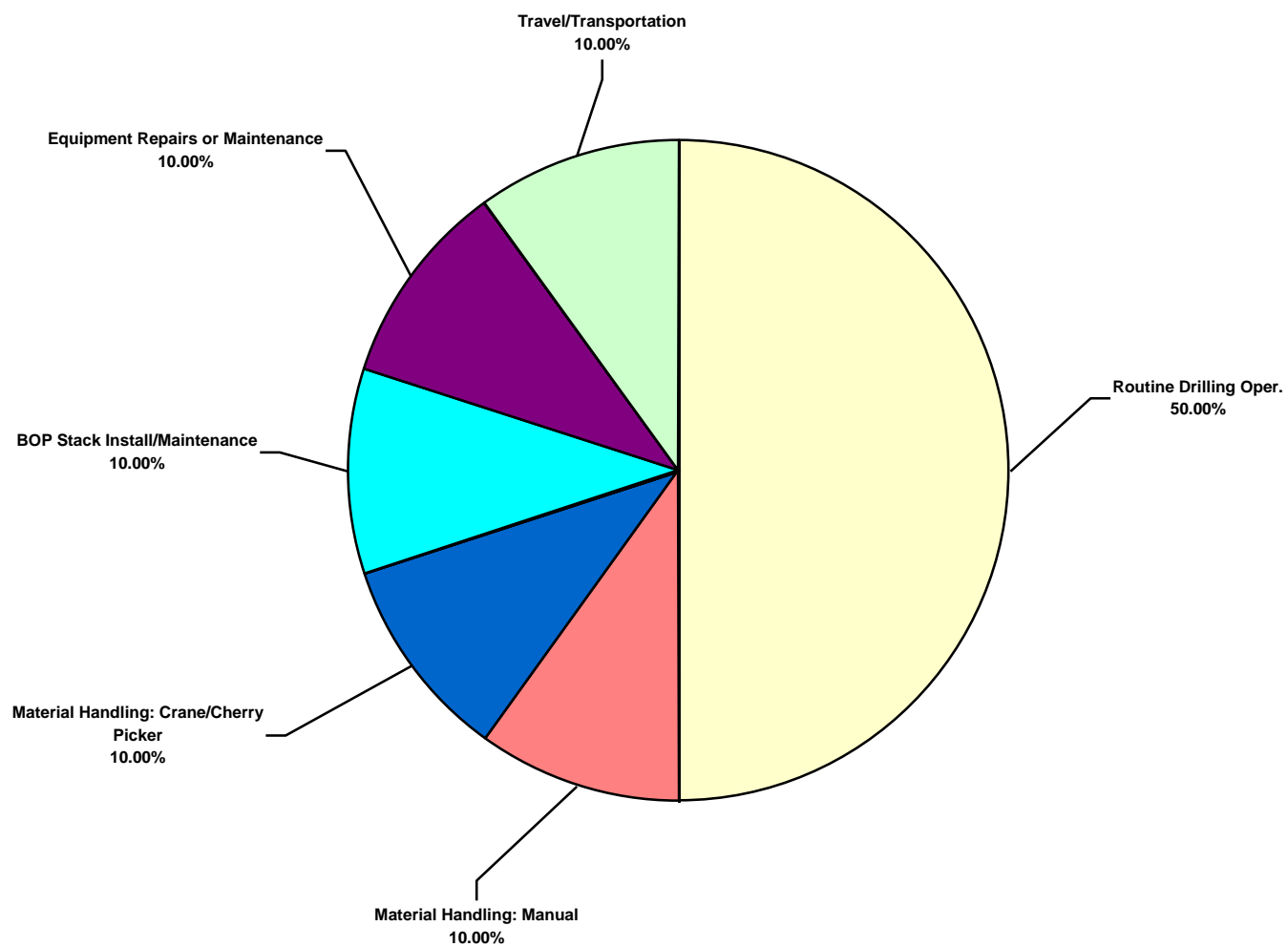
US Water Total Lost Time Incidents by Equipment (Chart 9)
Based on 8 Incidents



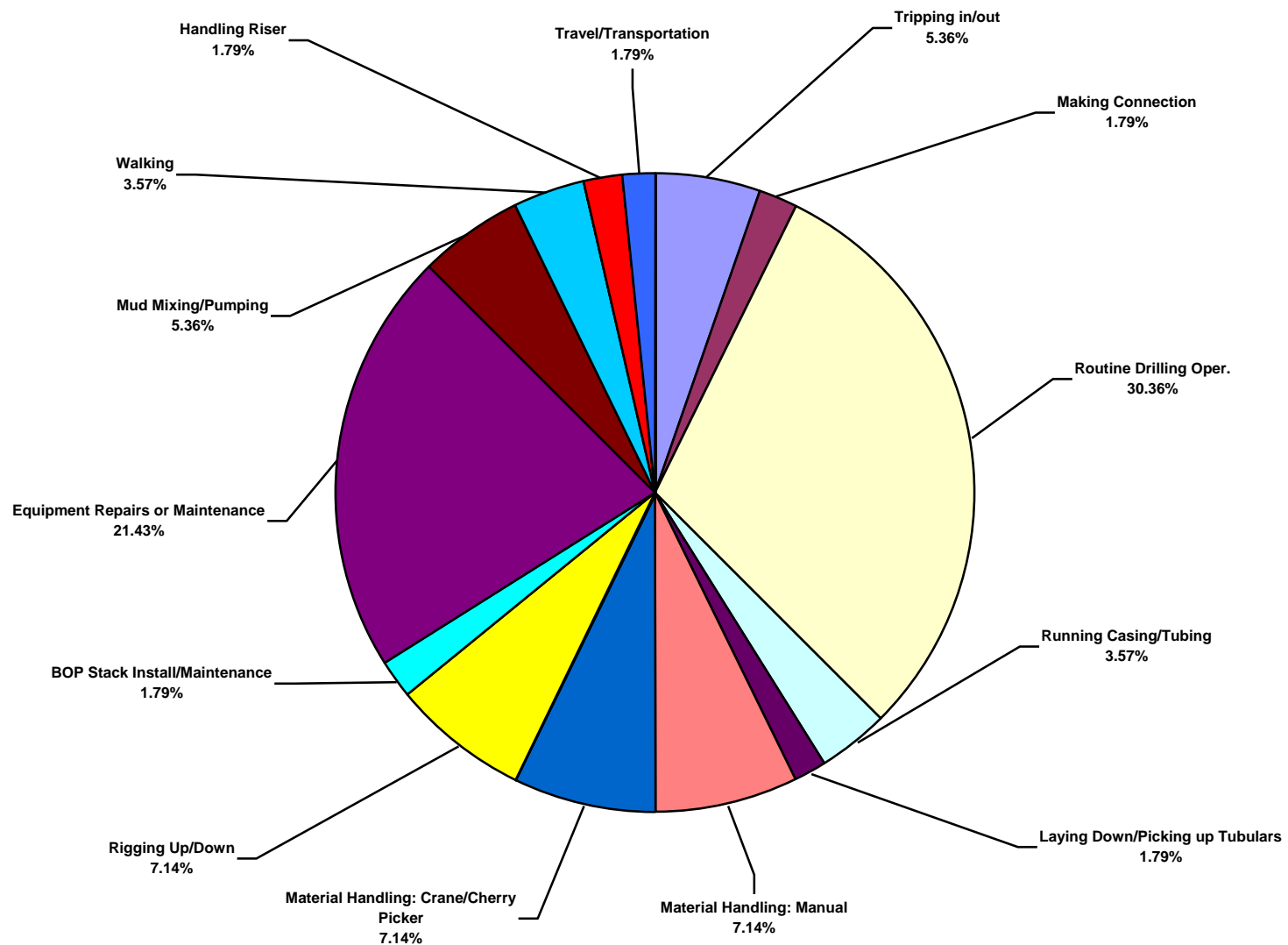
US Water Total Recordable Incidents by Equipment (Chart 10)
Based on 49 Incidents



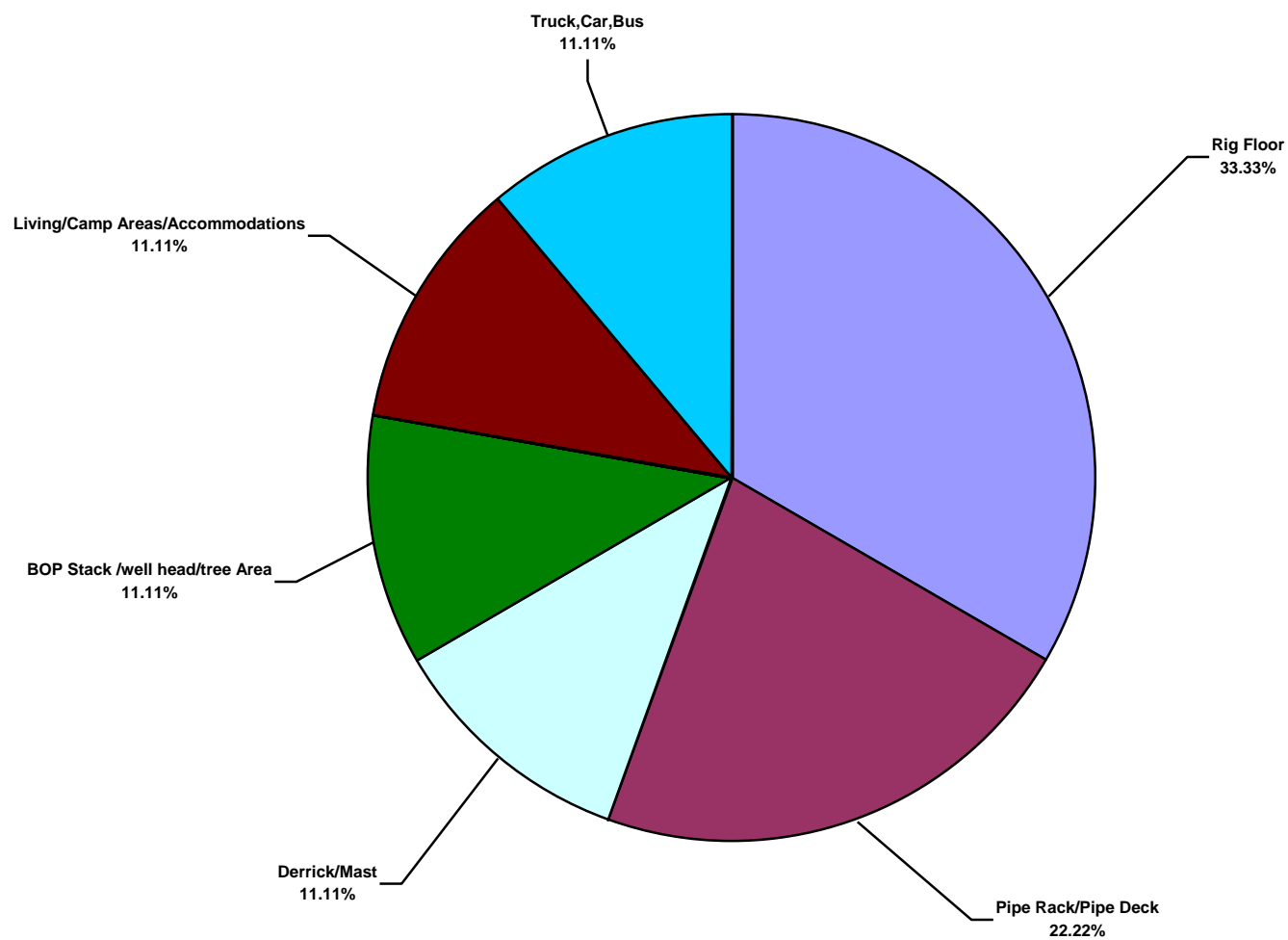
US Water Total Lost Time Incidents by Operation (Chart 11)
Based on 10 Incidents



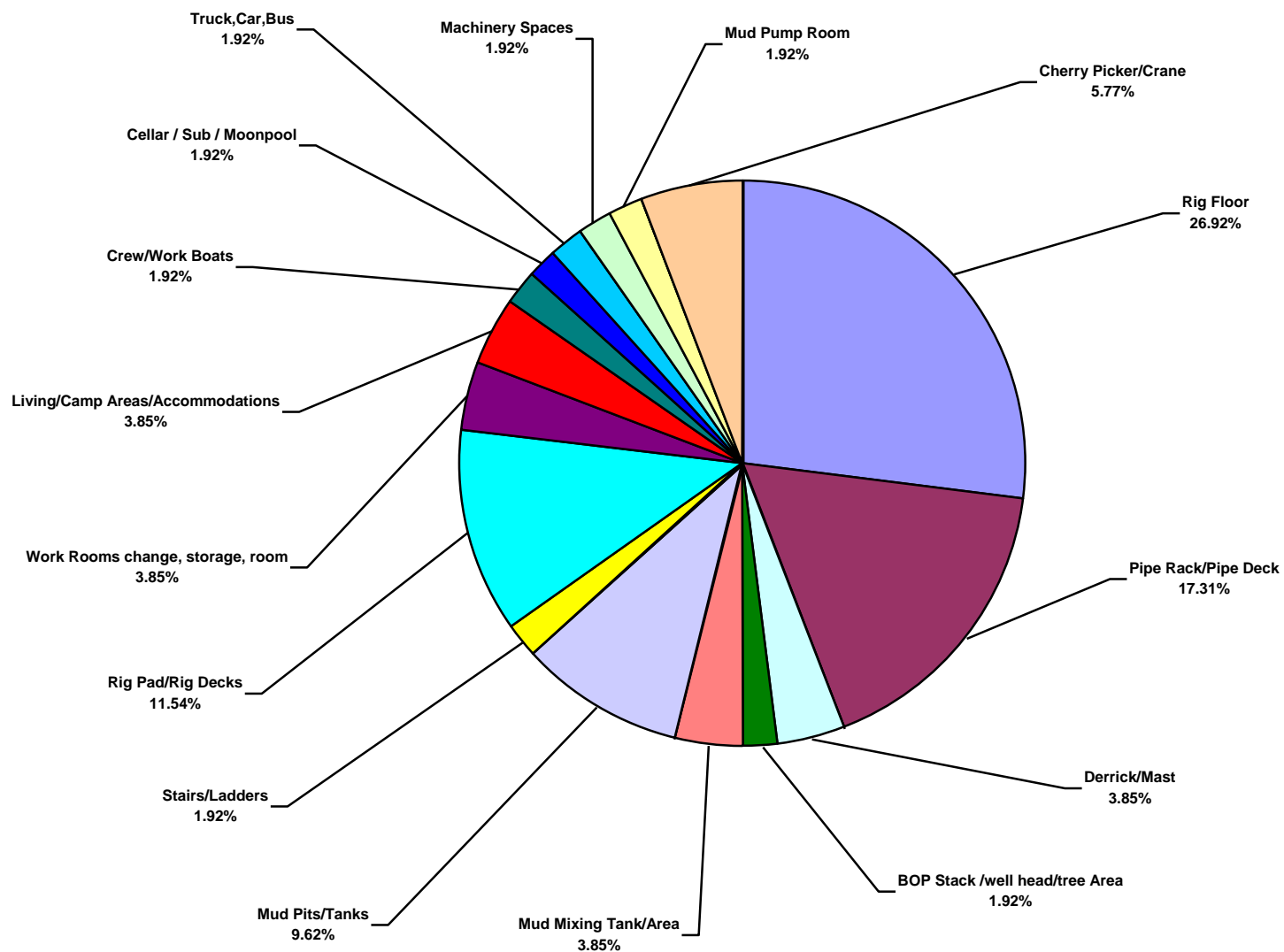
US Water Total Recordable Incidents by Operation (Chart 12)
Based on 56 Incidents



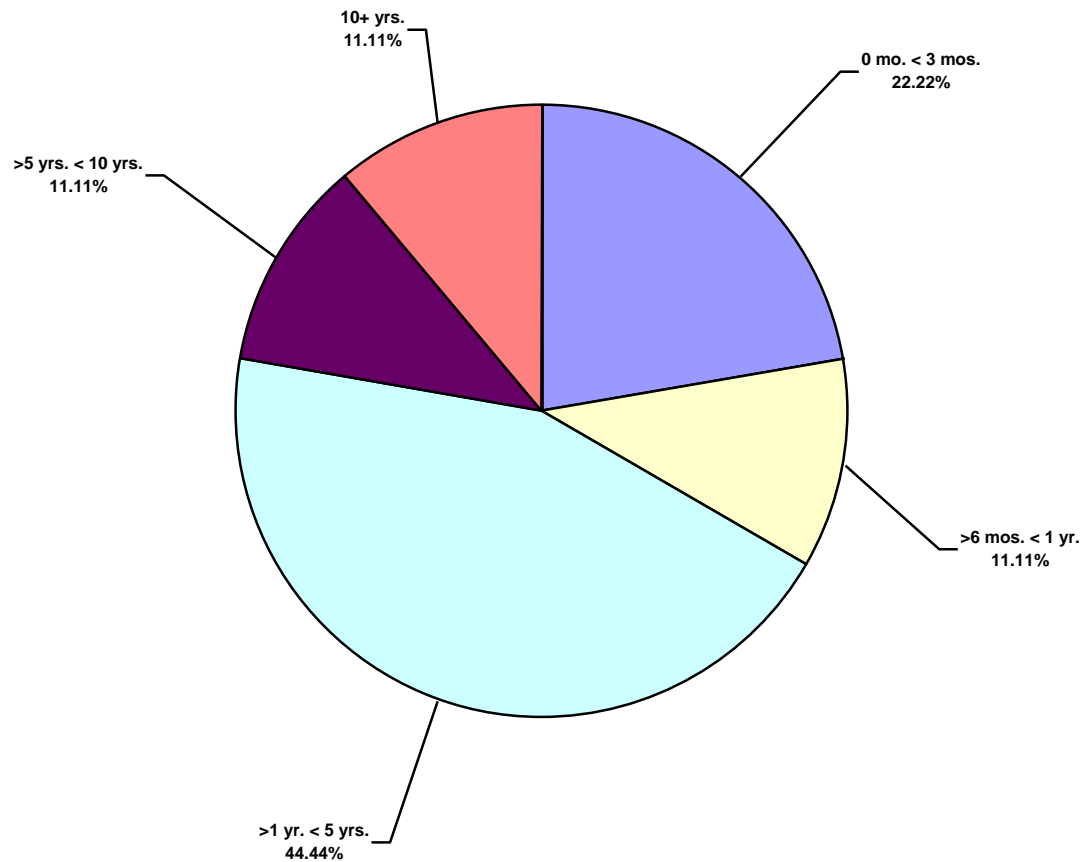
US Water Total Lost Time Incidents by Location (Chart 13)
Based on 9 Incidents



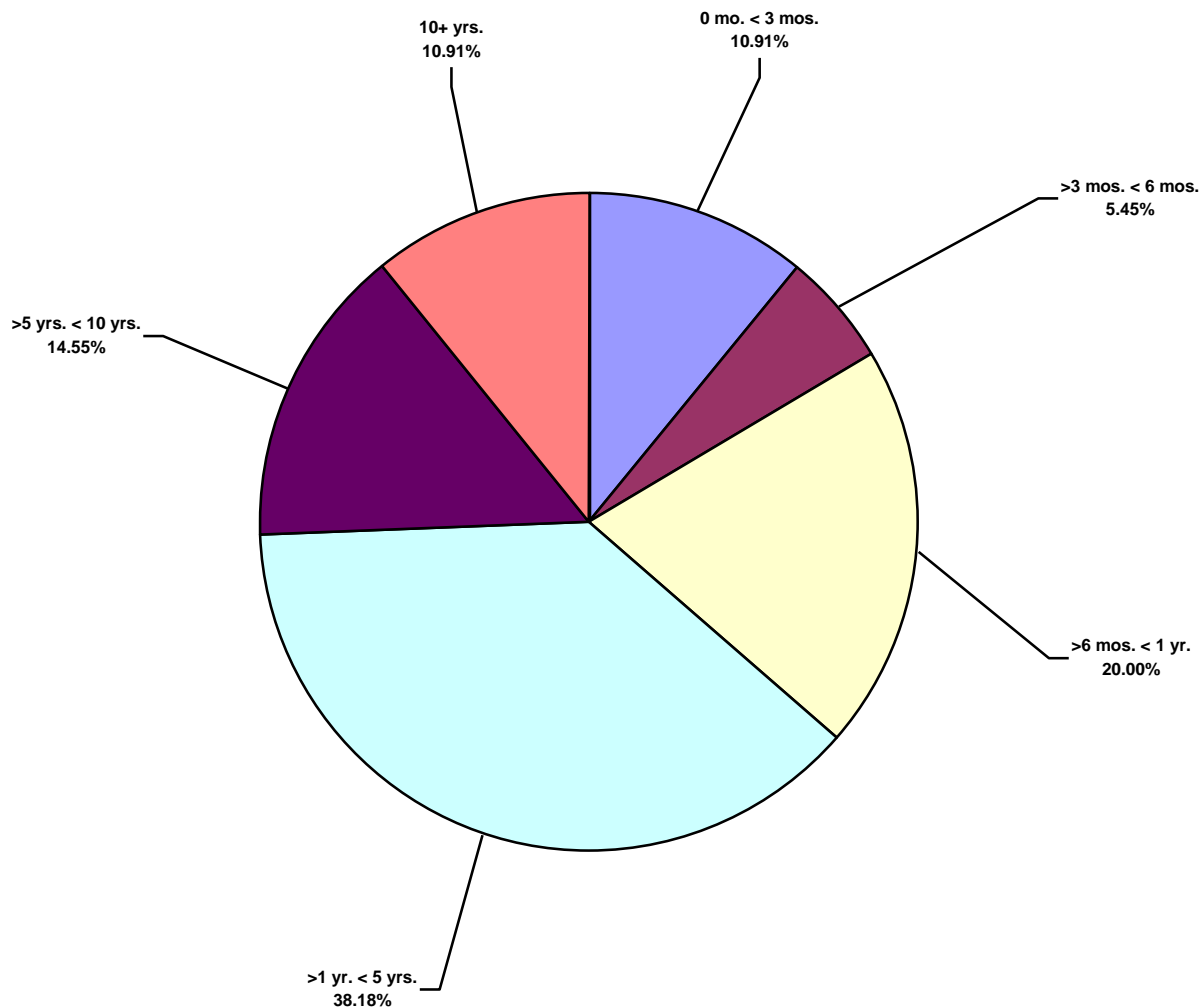
US Water Total Recordable Incidents by Location (Chart 14)
Based on 52 Incidents



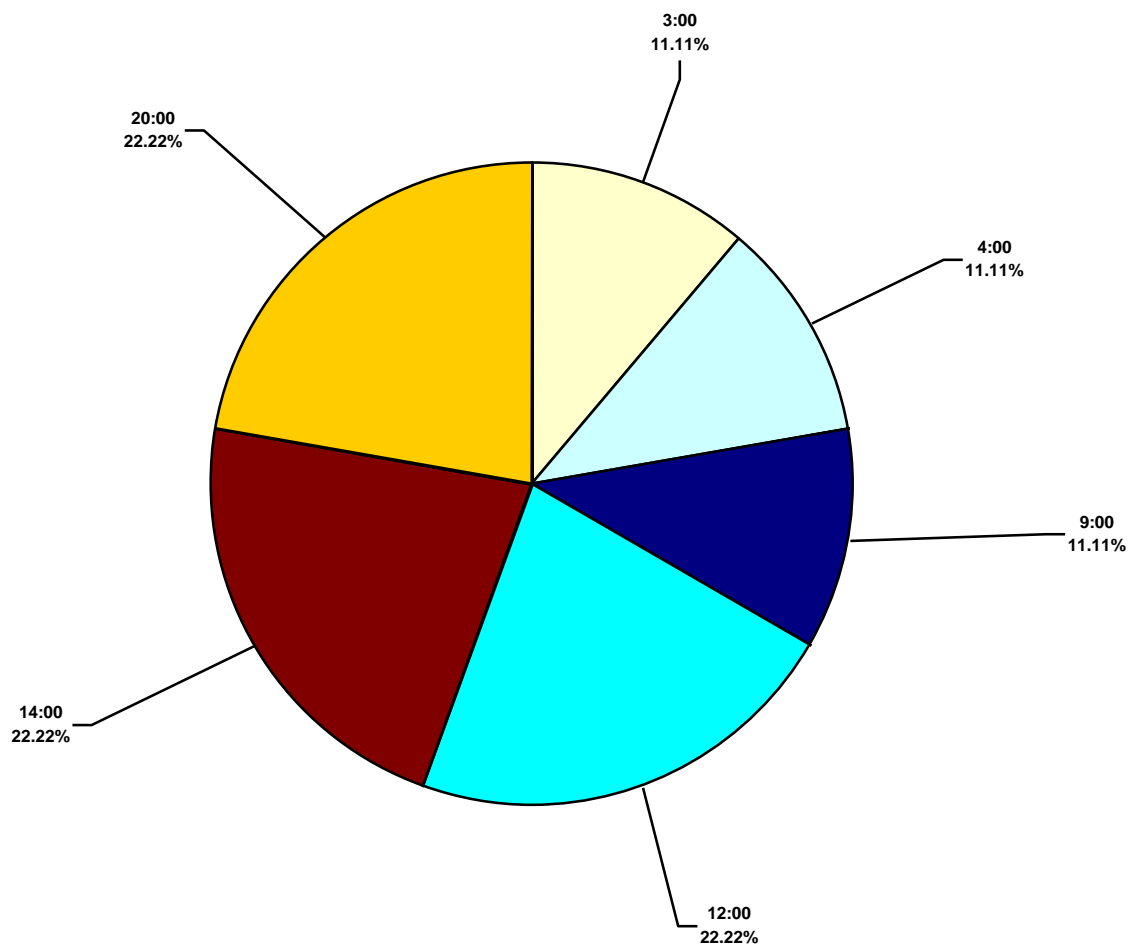
US Water Total Lost Time Incidents by Time in Service (Chart 15)
Based on 9 Incidents



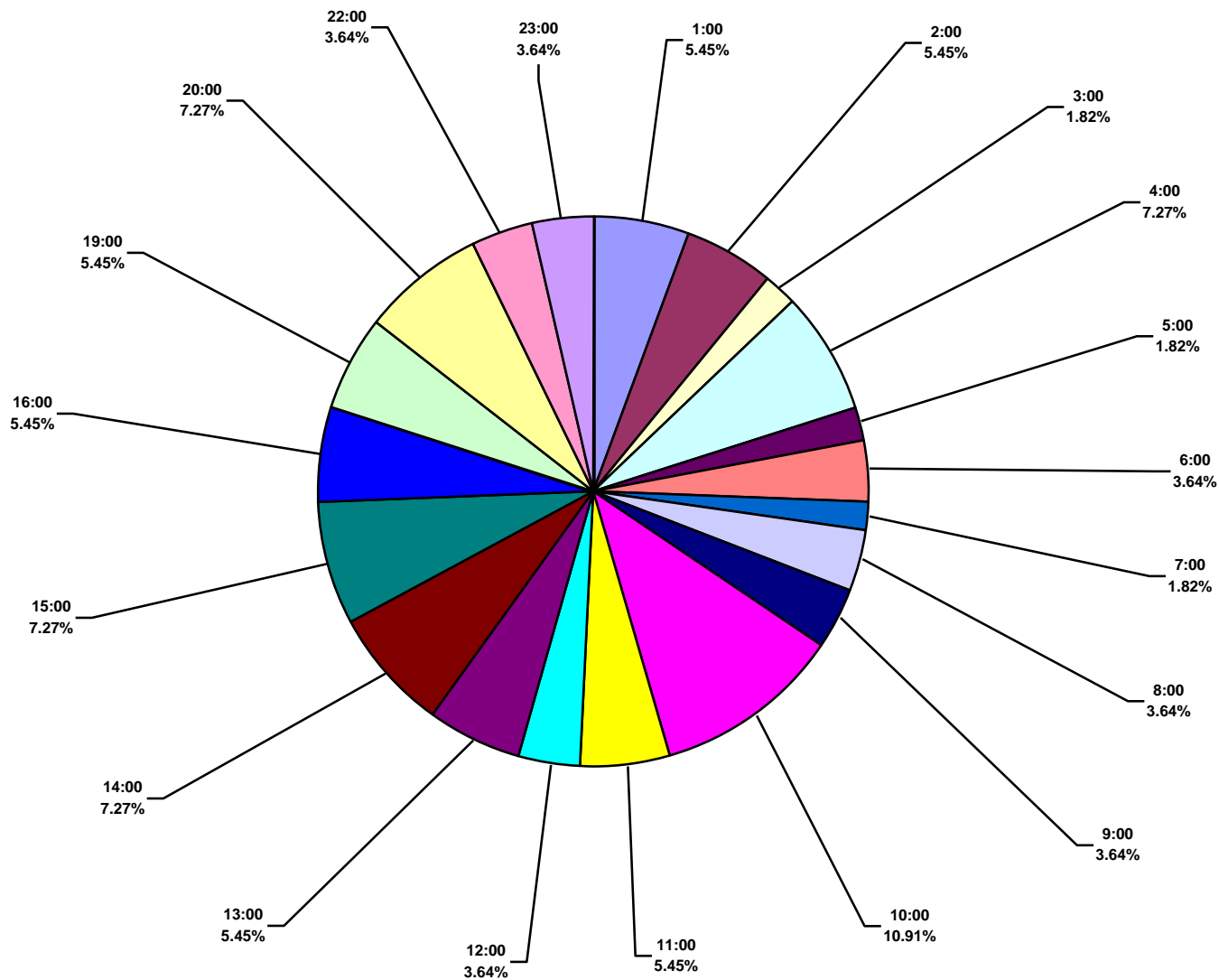
US Water Total Recordable Incidents by Time in Service (Chart 16)
Based on 55 Incidents



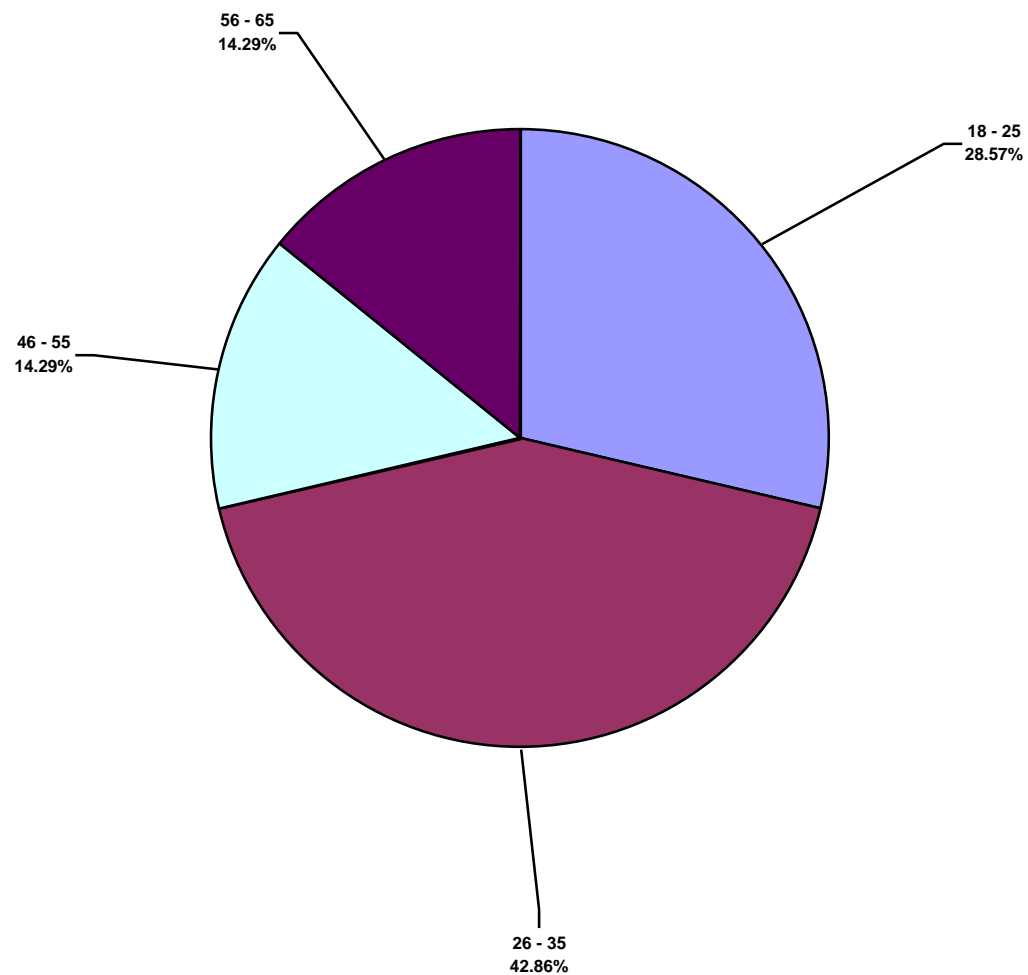
US Water Total Lost Time Incidents by Time of Day (Chart 17)
Based on 9 Incidents



US Water Total Recordable Incidents by Time of Day (Chart 18)
Based on 55 Incidents



US Water Total Lost Time Incidents by Age (Chart 19)
Based on 7 Incidents



US Water Total Recordable Incidents by Age (Chart 20)
Based on 44 Incidents

