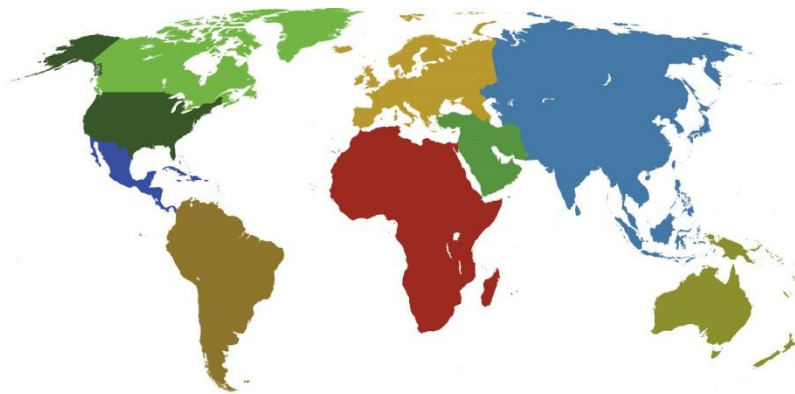




**IADC**

**IADC  
ISP PROGRAM**

**2018**



**Summary of Occupational  
Incidents  
(Middle East Water Totals)**

*Issued 15 June 2019*

# Table of Contents

(Table of Contents is Hyperlinked, Just click on Topic & go)

IADC 2018 MIDDLE EAST WATER TOTALS (TABLE 1).....	1
<i>Middle East Water Total Incidence Rates vs Man-hours (Figure 1)</i> .....	1
IADC 2018 MIDDLE EAST WATER CHARTS .....	2
<i>Middle East Water Total Lost Time Incidents by Month (Chart 1)</i> .....	2
<i>Middle East Water Total Recordable Incidents by Month (Chart 2)</i> .....	3
<i>Middle East Water Total Lost Time Incidents by Occupation (Chart 3)</i> .....	4
<i>Middle East Water Total Recordable Incidents by Occupation (Chart 4)</i> .....	5
<i>Middle East Water Total Lost Time Incidents by Body Part (Chart 5)</i> .....	6
<i>Middle East Water Total Recordable Incidents by Body Part (Chart 6)</i> .....	7
<i>Middle East Water Total Lost Time Incidents by Incident Type (Chart 7)</i> .....	8
<i>Middle East Water Total Recordable Incidents by Incident Type (Chart 8)</i> .....	9
<i>Middle East Water Total Lost Time Incidents by Equipment (Chart 9)</i> .....	10
<i>Middle East Water Total Recordable Incidents by Equipment (Chart 10)</i> .....	11
<i>Middle East Water Total Lost Time Incidents by Operation (Chart 11)</i> .....	12
<i>Middle East Water Total Recordable Incidents by Operation (Chart 12)</i> .....	13
<i>Middle East Water Total Lost Time Incidents by Location (Chart 13)</i> .....	14
<i>Middle East Water Total Recordable Incidents by Location (Chart 14)</i> .....	15
<i>Middle East Water Total Lost Time Incidents by Time in Service (Chart 15)</i> .....	16
<i>Middle East Water Total Recordable Incidents by Time in Service (Chart 16)</i> .....	17
<i>Middle East Water Total Lost Time Incidents by Time of Day (Chart 17)</i> .....	18
<i>Middle East Water Total Recordable Incidents by Time of Day (Chart 18)</i> .....	19
<i>Middle East Water Total Lost Time Incidents by Age (Chart 19)</i> .....	20
<i>Middle East Water Total Recordable Incidents by Age(Chart 20)</i> .....	21

## IADC 2018 Middle East Water Totals (Table 1)

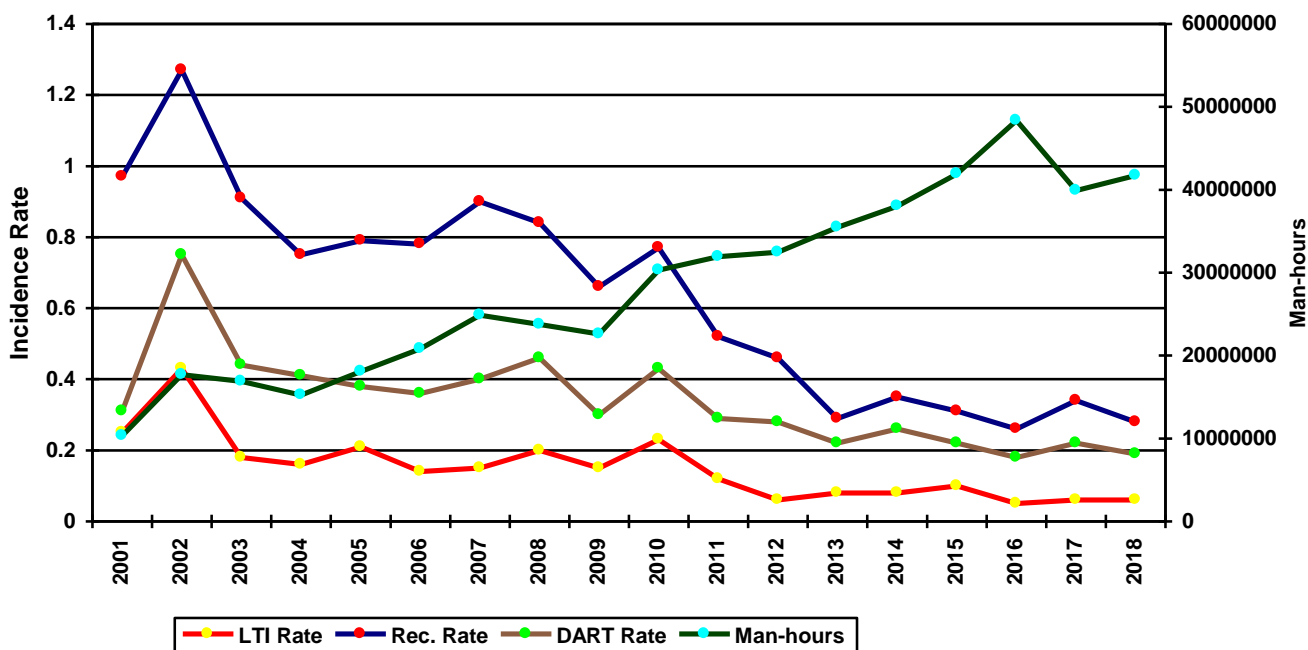
	<u>Total</u>
Total Man-hours	41,706,481
Total Medical Treatment Incidents	18
Total Restricted Work Incidents	28
Total Lost Time Incidents	11
Total Fatalities	1
Total Recordables	58
MTO Incidence Rate	0.09
RWC Incidence Rate	0.13
LTI Incidence Rate	0.06
LTI Frequency Rate	0.29
DART Incidence Rate	0.19
DART Frequency Rate	0.96
Recordable Incidence Rate	0.28
Recordable Frequency Rate	1.39

Companies Reporting: Water – 18

Medical Treatment Incidence Rate = MTOs X 200,000  
 Restricted Work Incidence Rate = RWCs X 200,000  
 Lost Time Incidence Rate = LTIs + FTLs X 200,000  
 DART Incidence Rate = LTIs + RWC X 200,000  
 Recordable Incidence Rate = RCRD X 200,000

Lost Time Frequency Rate = LTIs +FTLs X 1,000,000  
 DART Frequency Rate = LTIs + RWC X 1,000,000  
 Recordable Frequency Rate = RCRD X 1,000,000

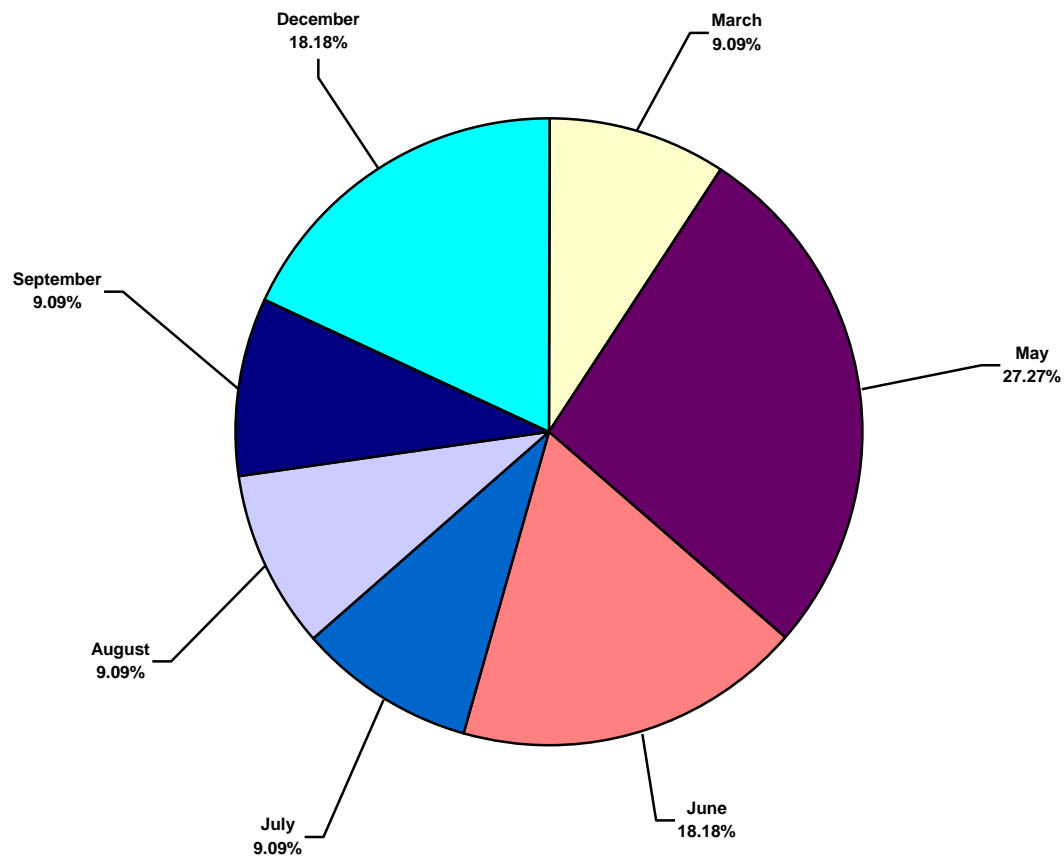
**Middle East Water Total Incidence Rates vs Man-hours (Figure 1)**



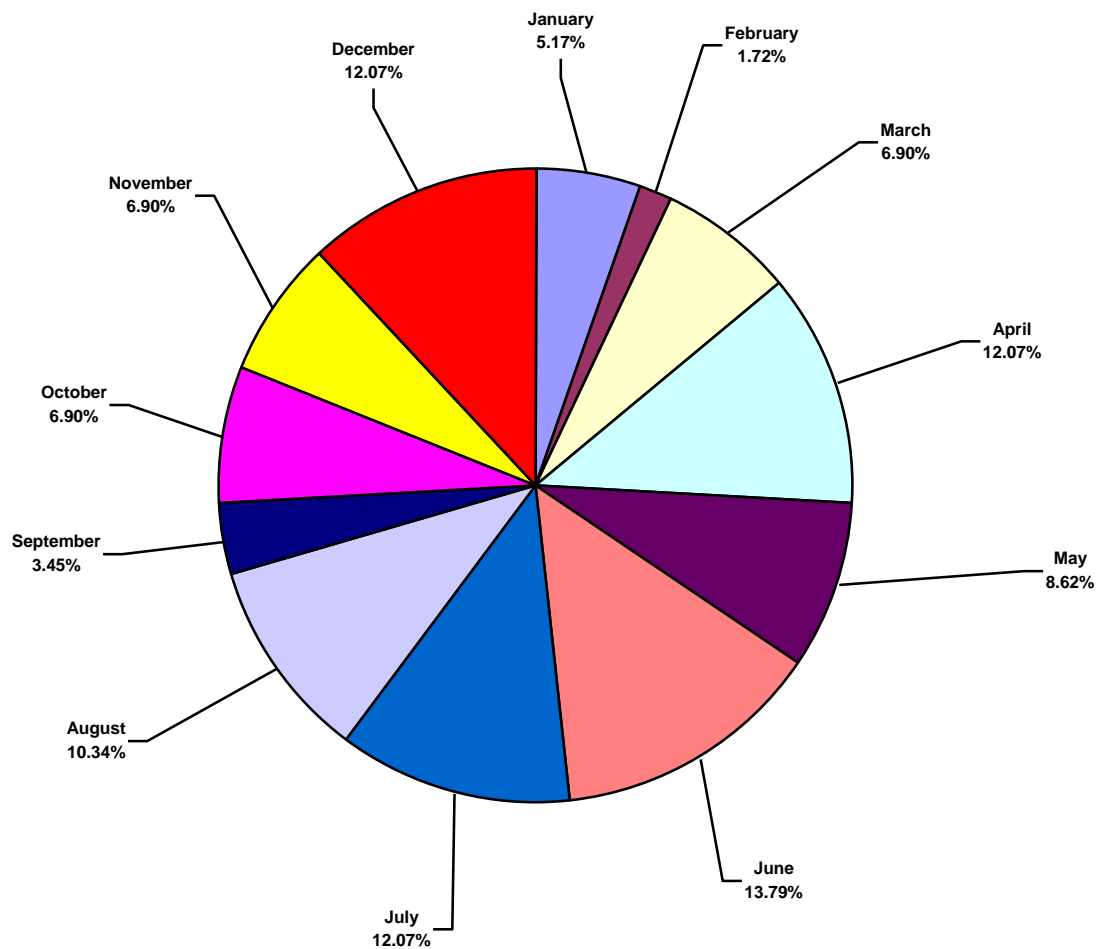
## IADC 2018 Middle East Water Charts

### Middle East Water Total Lost Time Incidents by Month (Chart 1)

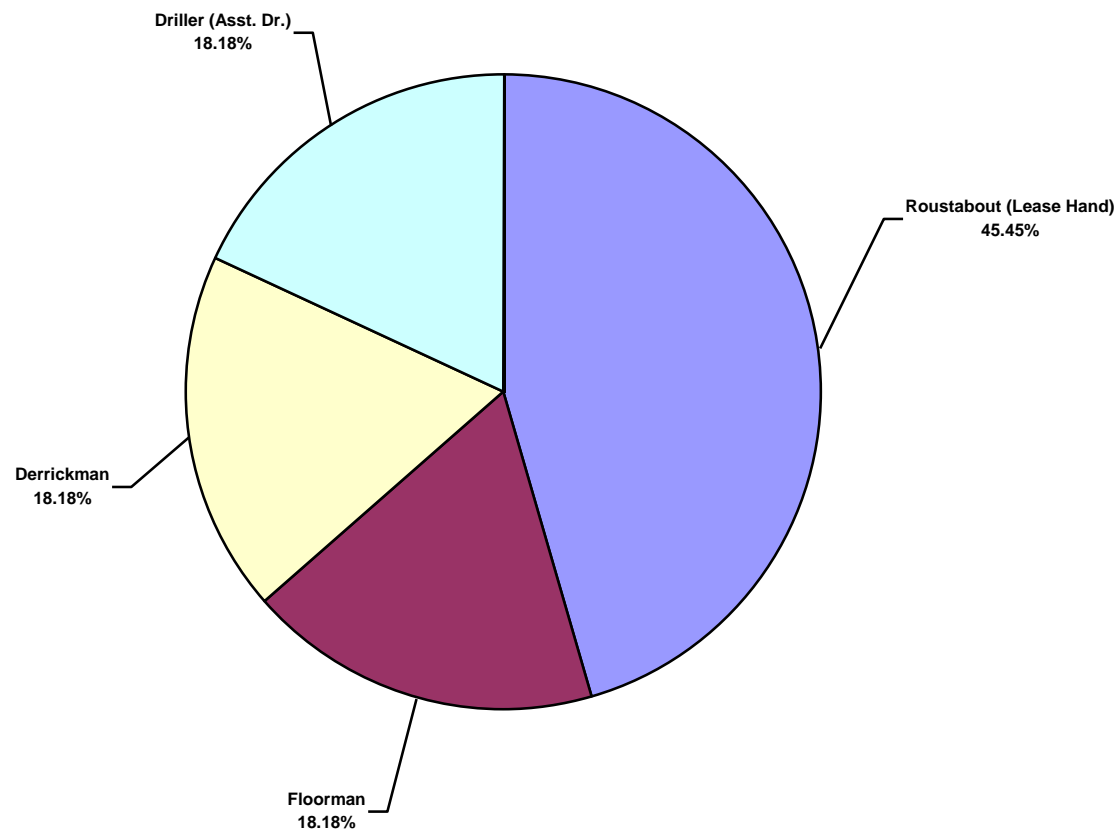
Based on 11 Incidents



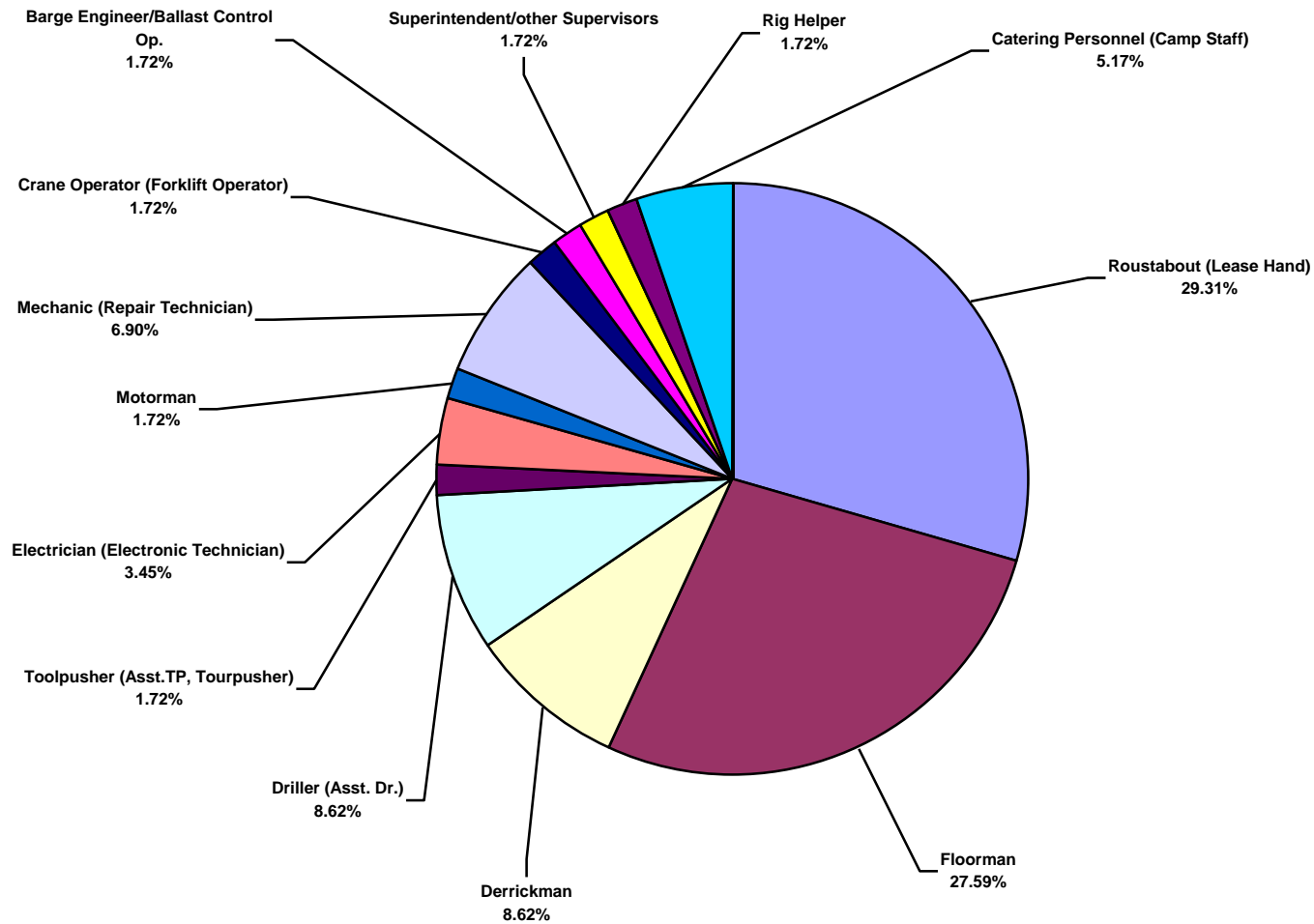
**Middle East Water Total Recordable Incidents by Month (Chart 2)**  
Based on 58 Incidents



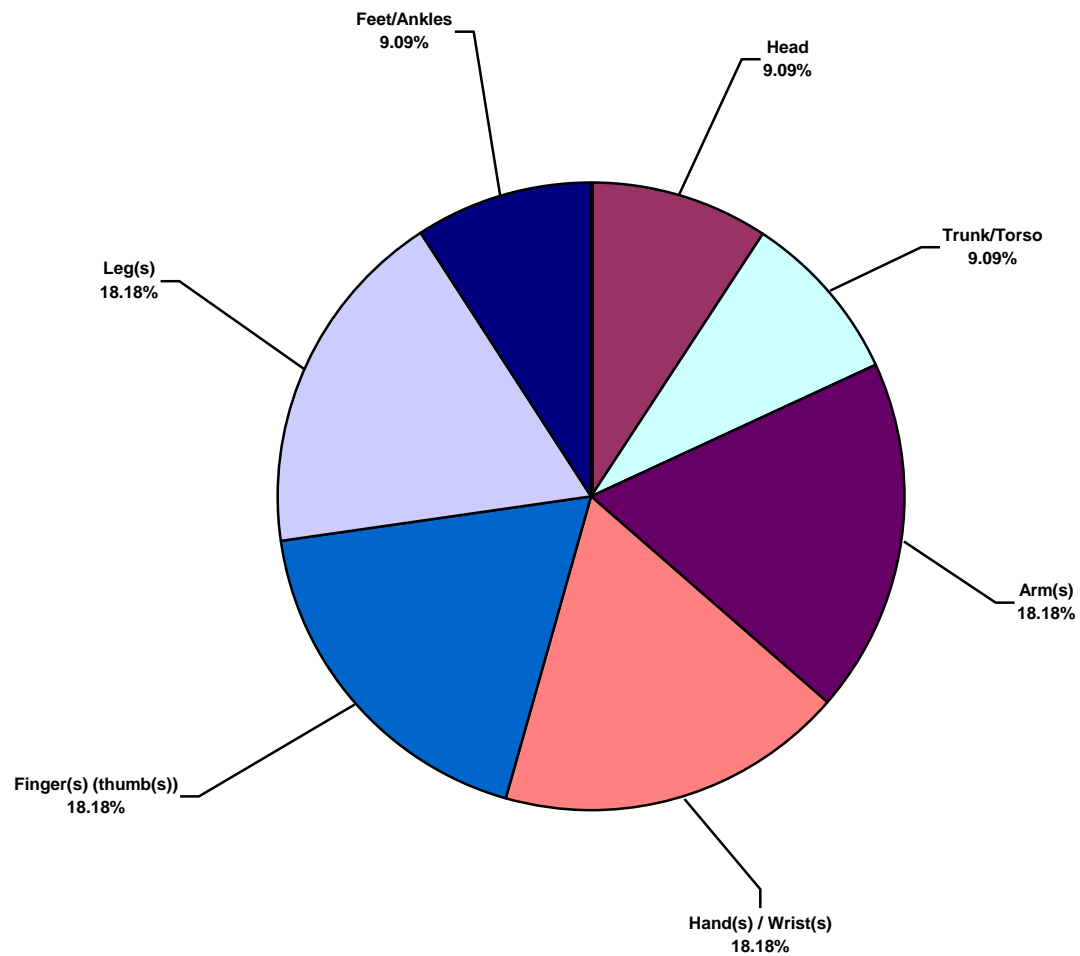
**Middle East Water Total Lost Time Incidents by Occupation (Chart 3)**  
Based on 11 Incidents



**Middle East Water Total Recordable Incidents by Occupation (Chart 4)**  
Based on 58 Incidents

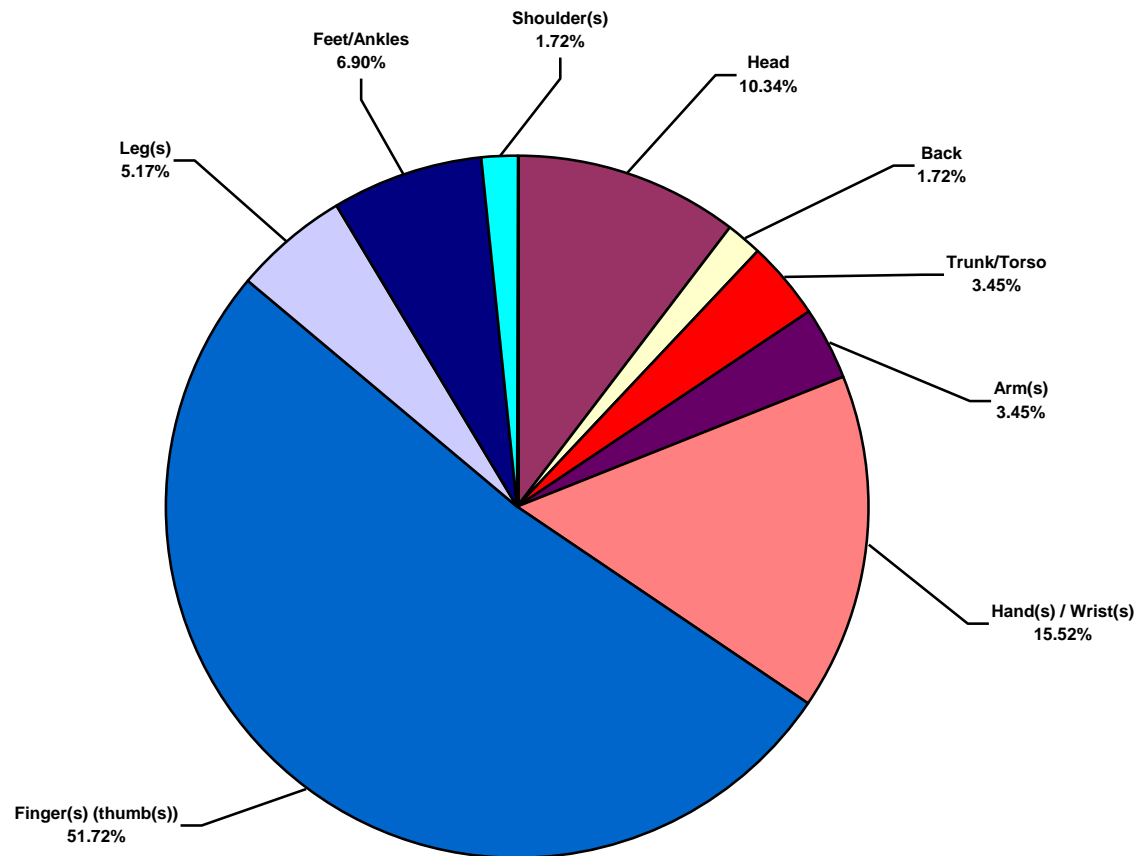


**Middle East Water Total Lost Time Incidents by Body Part (Chart 5)**  
Based on 11 Incidents

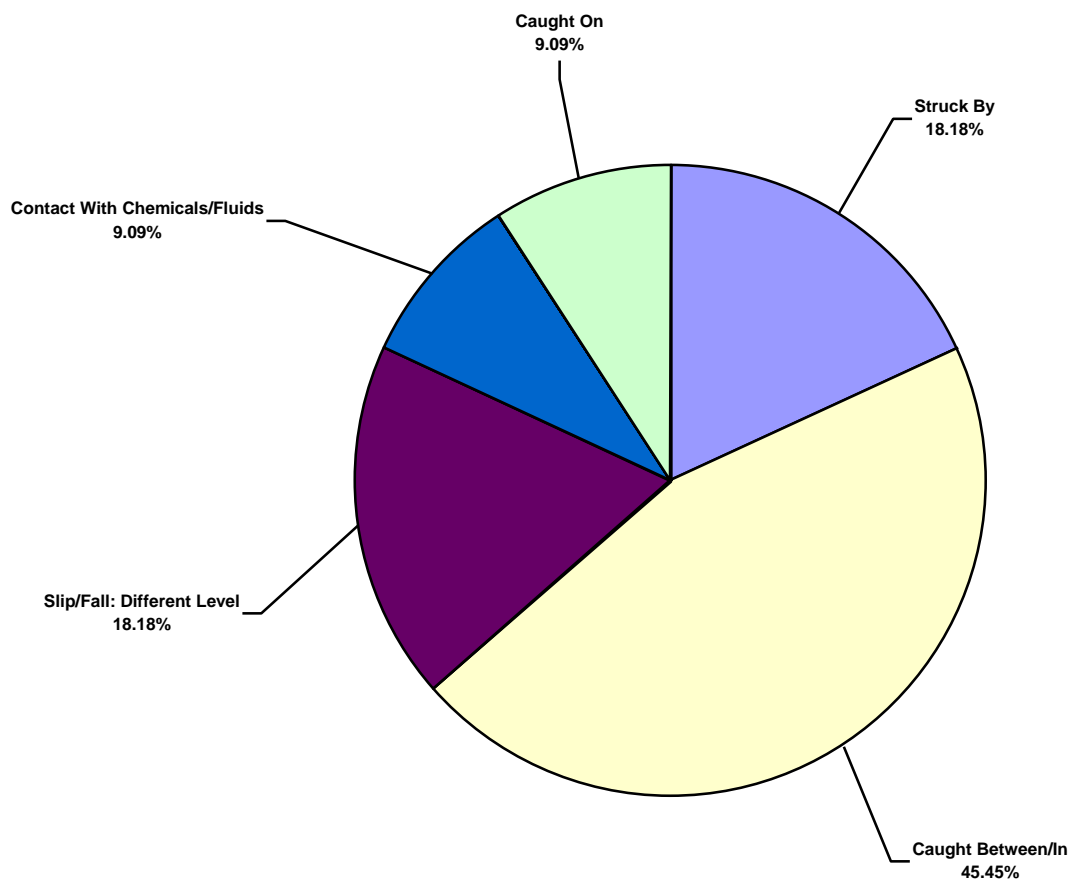




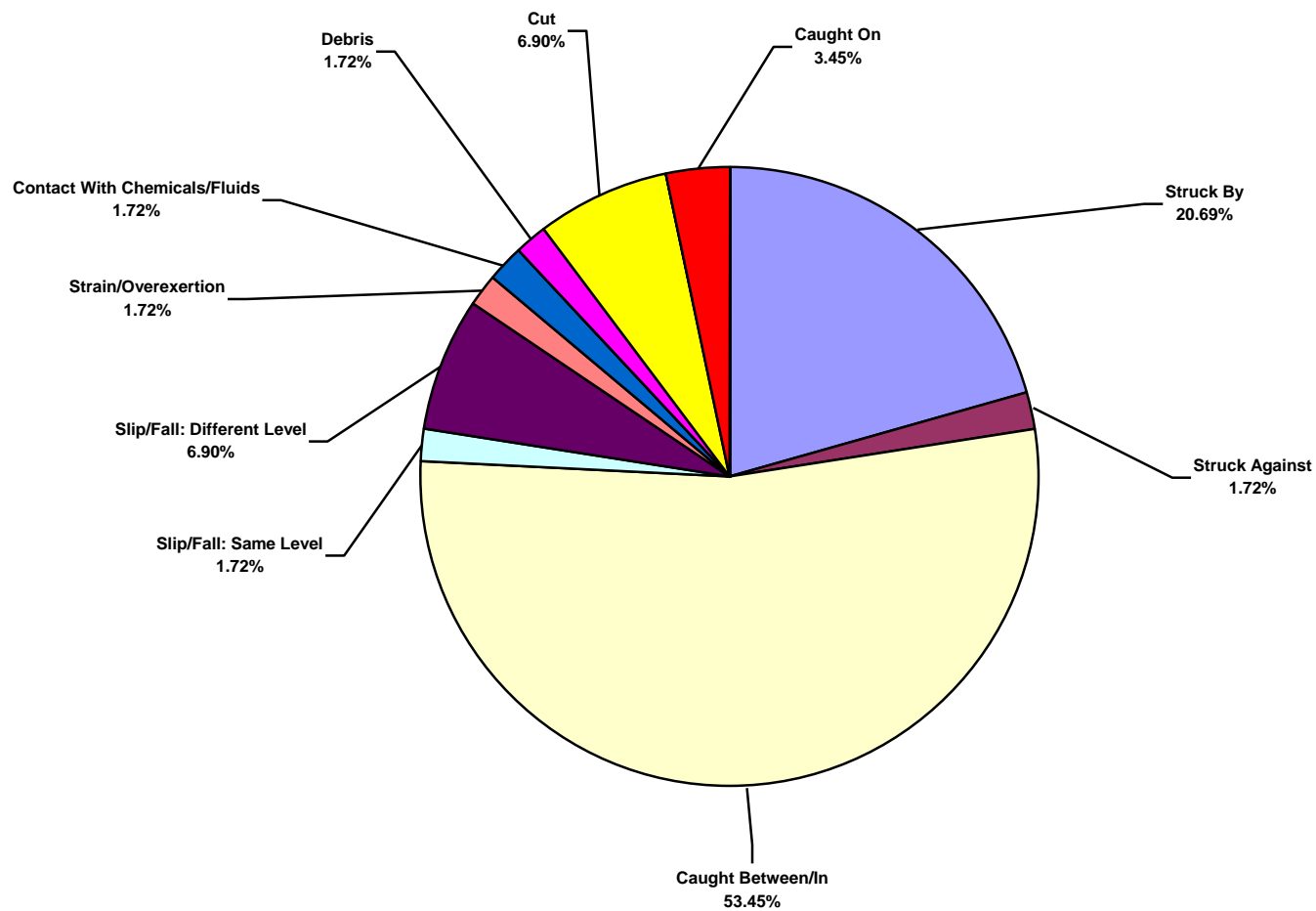
**Middle East Water Total Recordable Incidents by Body Part (Chart 6)**  
Based on 58 incidents



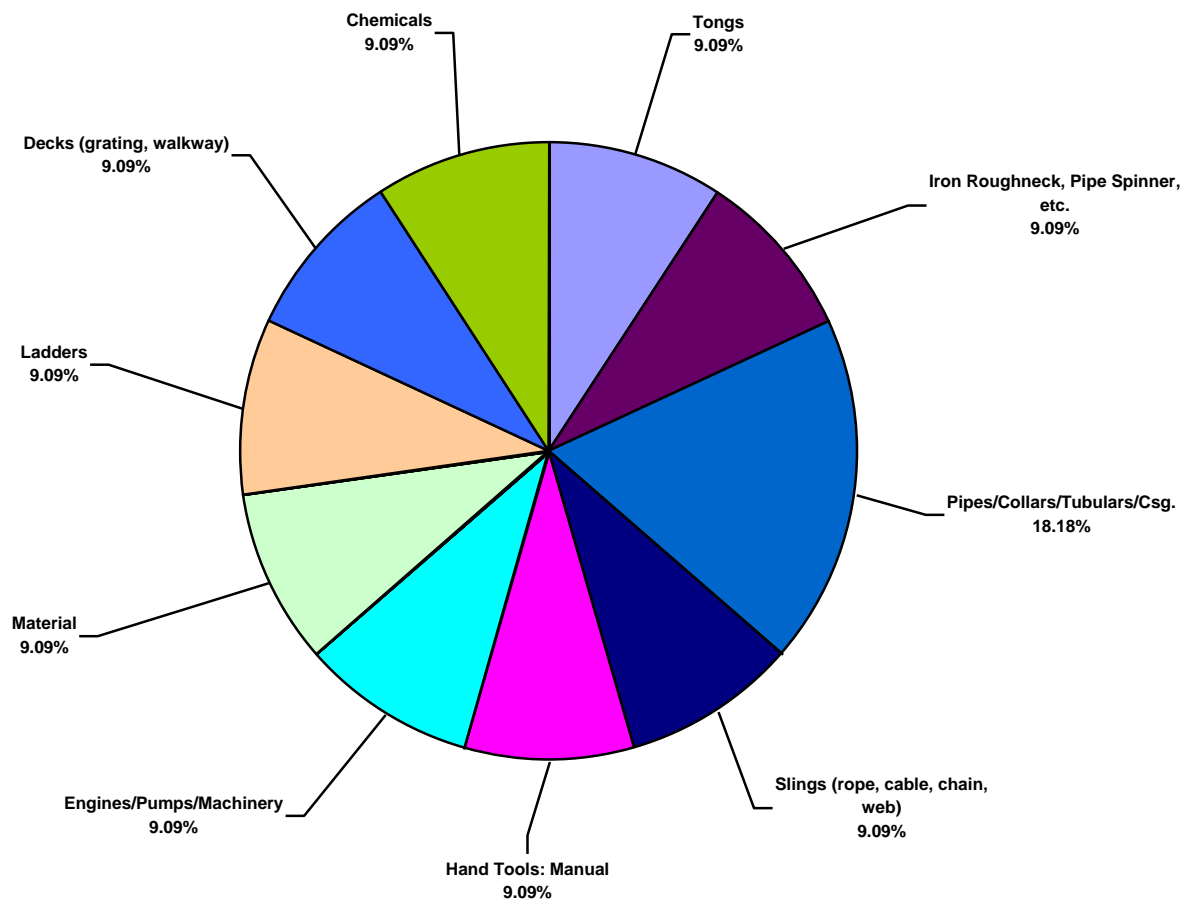
**Middle East Water Total Lost Time Incidents by Incident Type (Chart 7)**  
Based on 11 Incidents



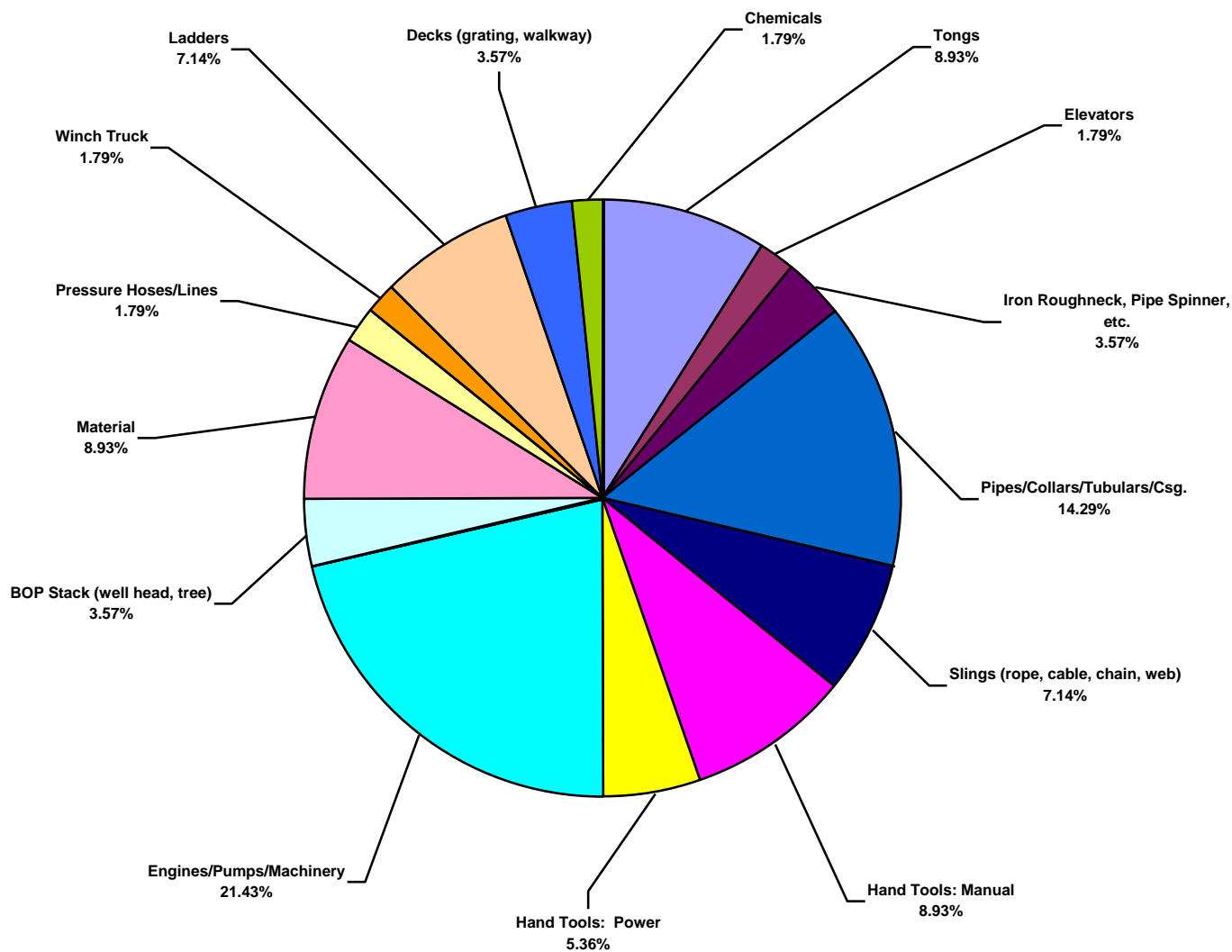
**Middle East Water Total Recordable Incidents by Incident Type (Chart 8)**  
Based on 58 Incidents



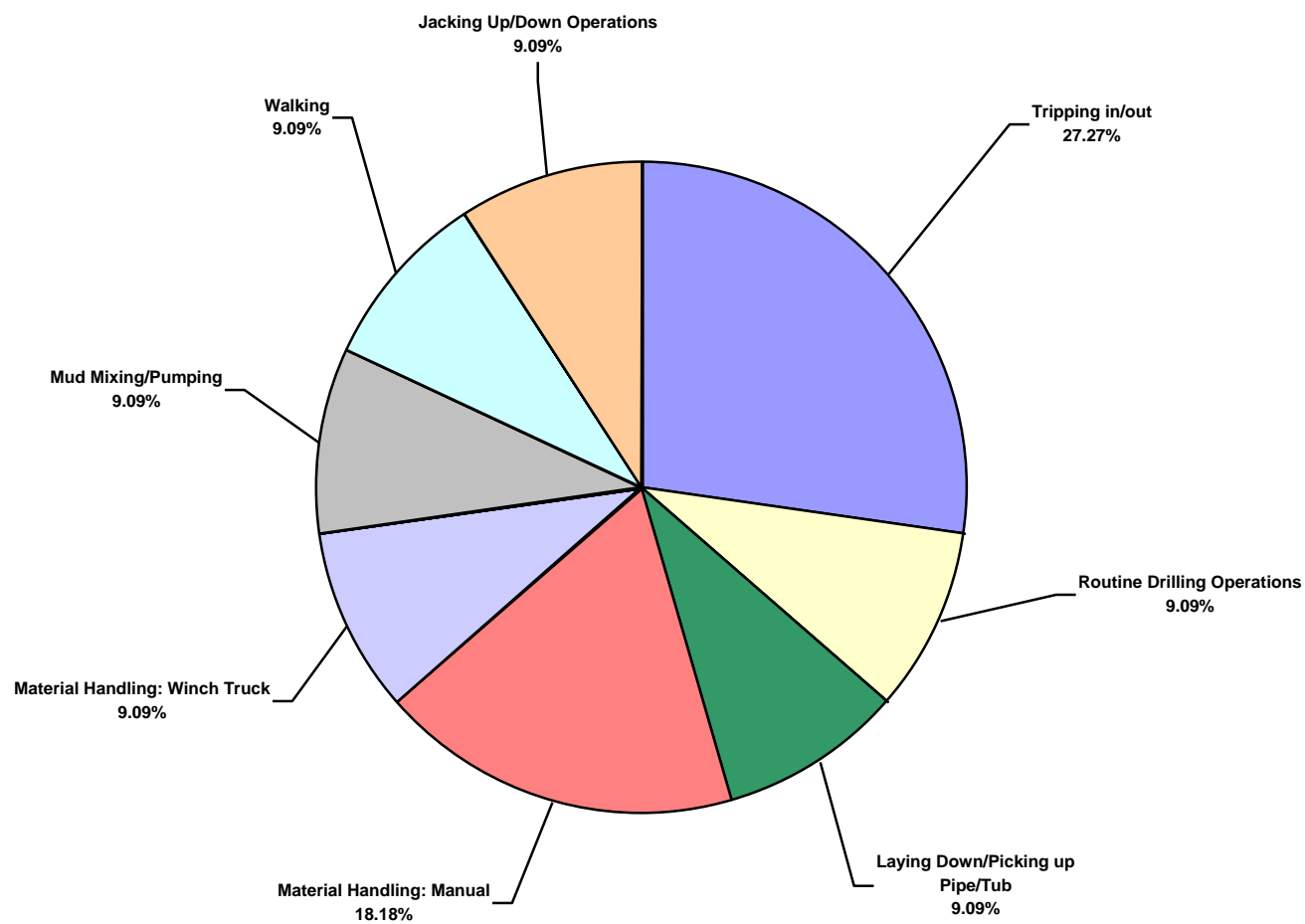
**Middle East Water Total Lost Time Incidents by Equipment (Chart 9)**  
Based on 11 Incidents



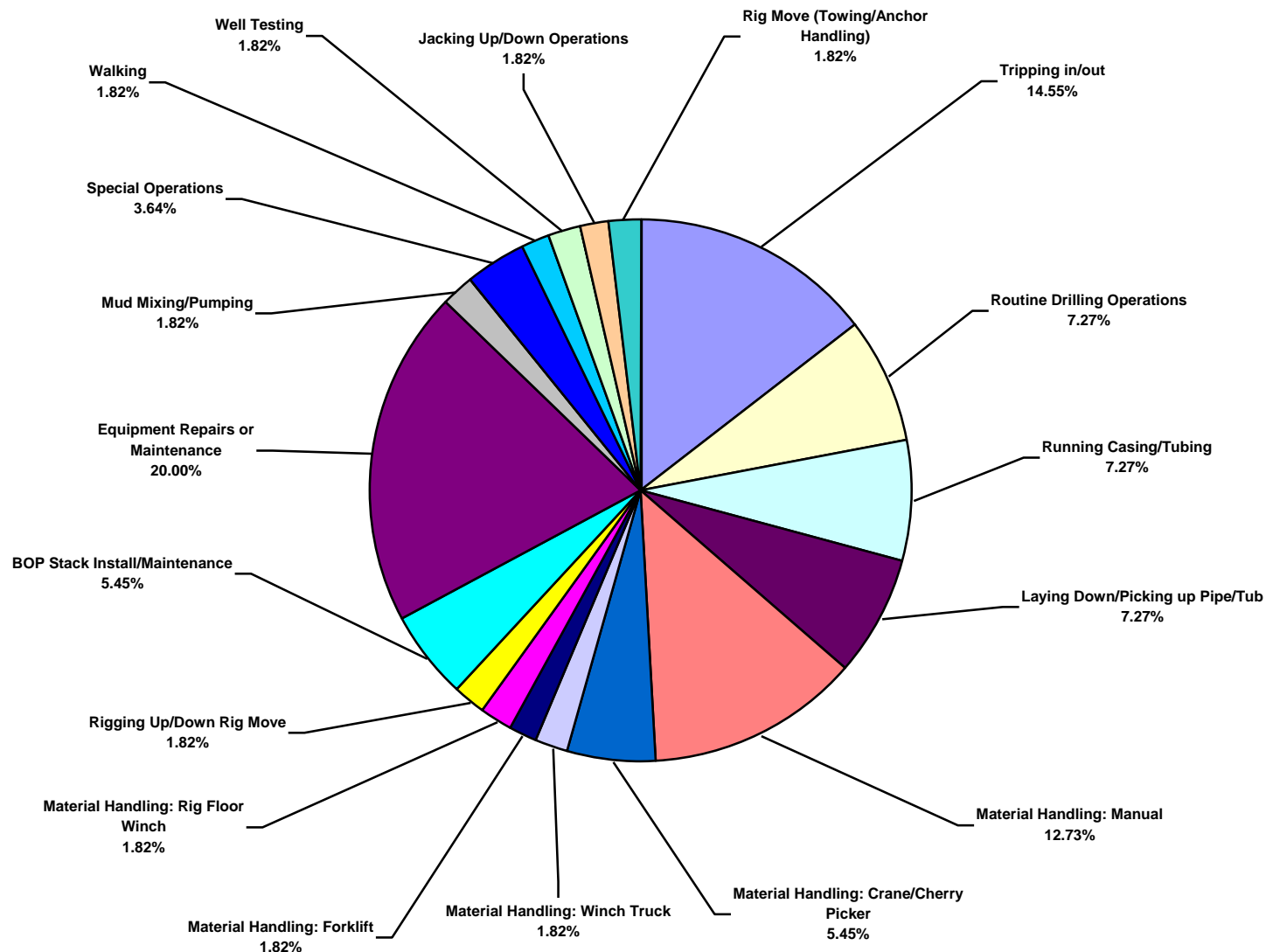
**Middle East Water Total Recordable Incidents by Equipment (Chart 10)**  
Based on 56 Incidents



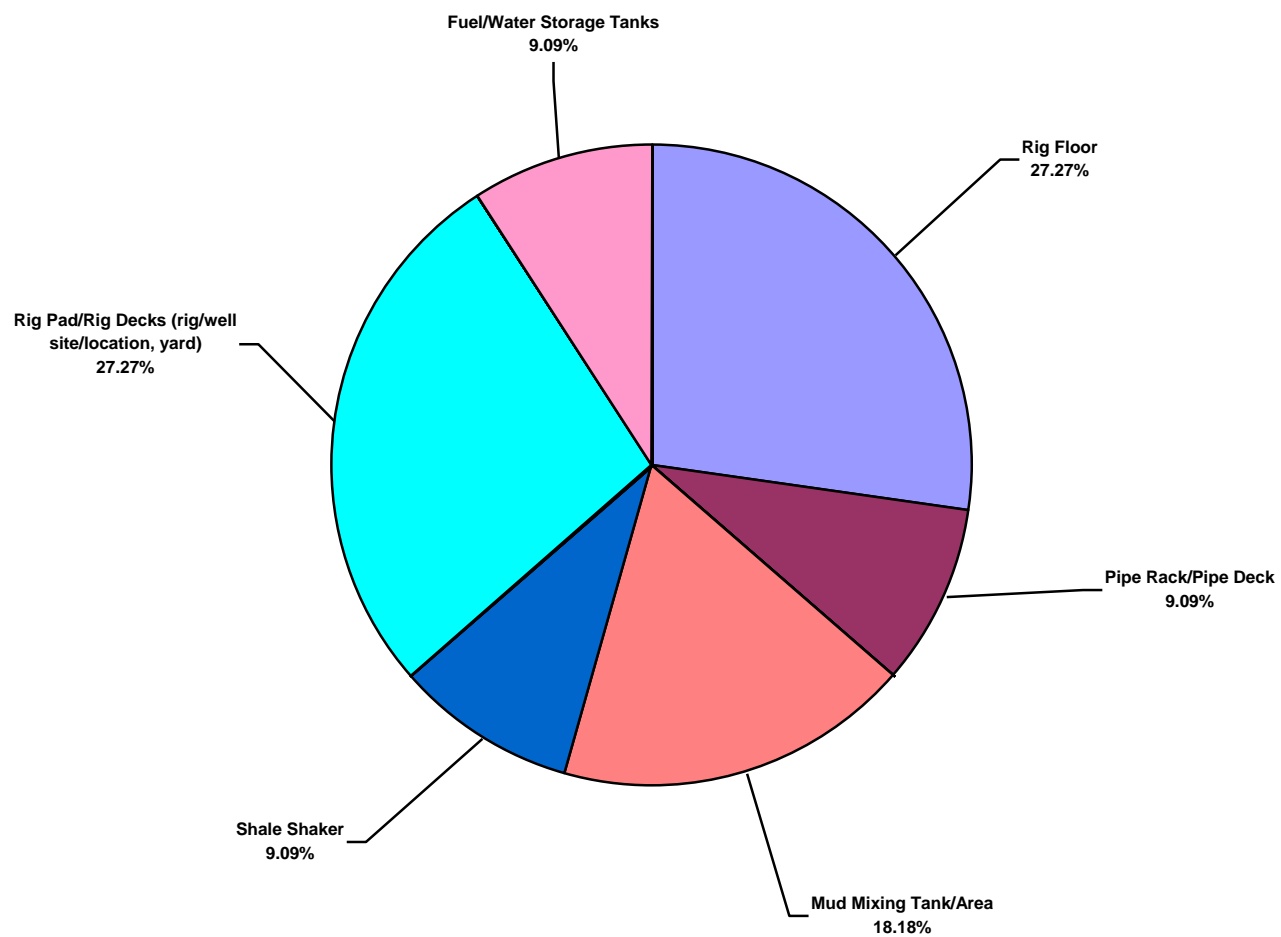
**Middle East Water Total Lost Time Incidents by Operation (Chart 11)**  
Based on 11 Incidents



**Middle East Water Total Recordable Incidents by Operation (Chart 12)**  
Based on 55 Incidents

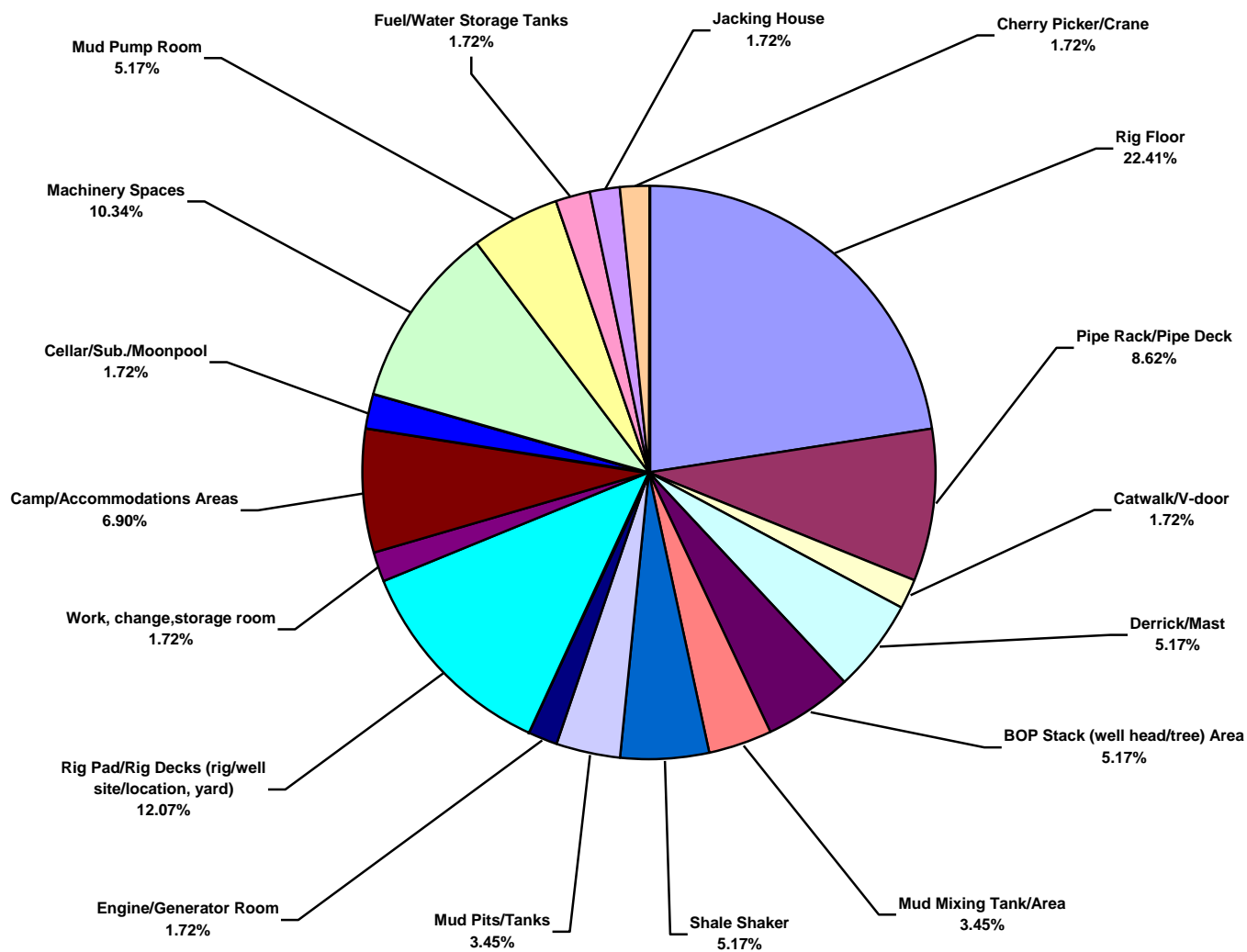


**Middle East Water Total Lost Time Incidents by Location (Chart 13)**  
Based on 11 Incidents

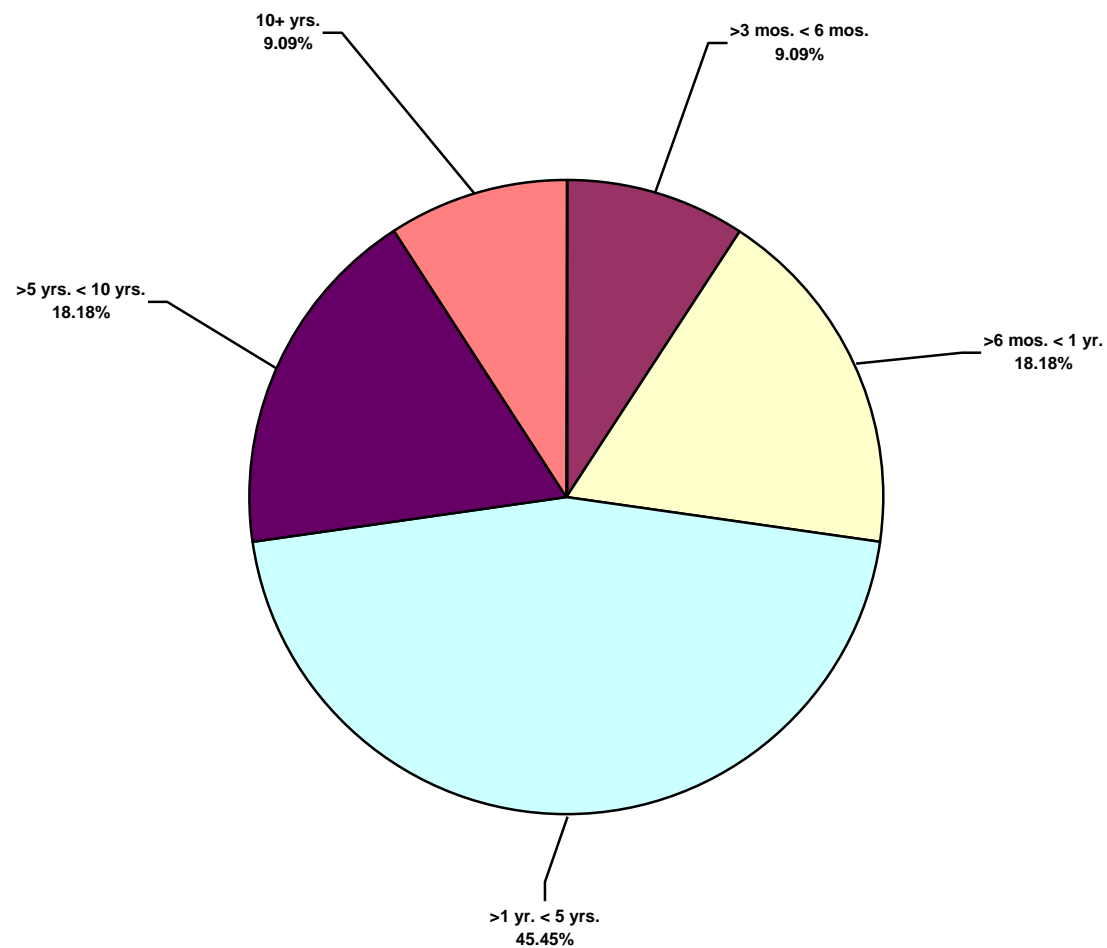




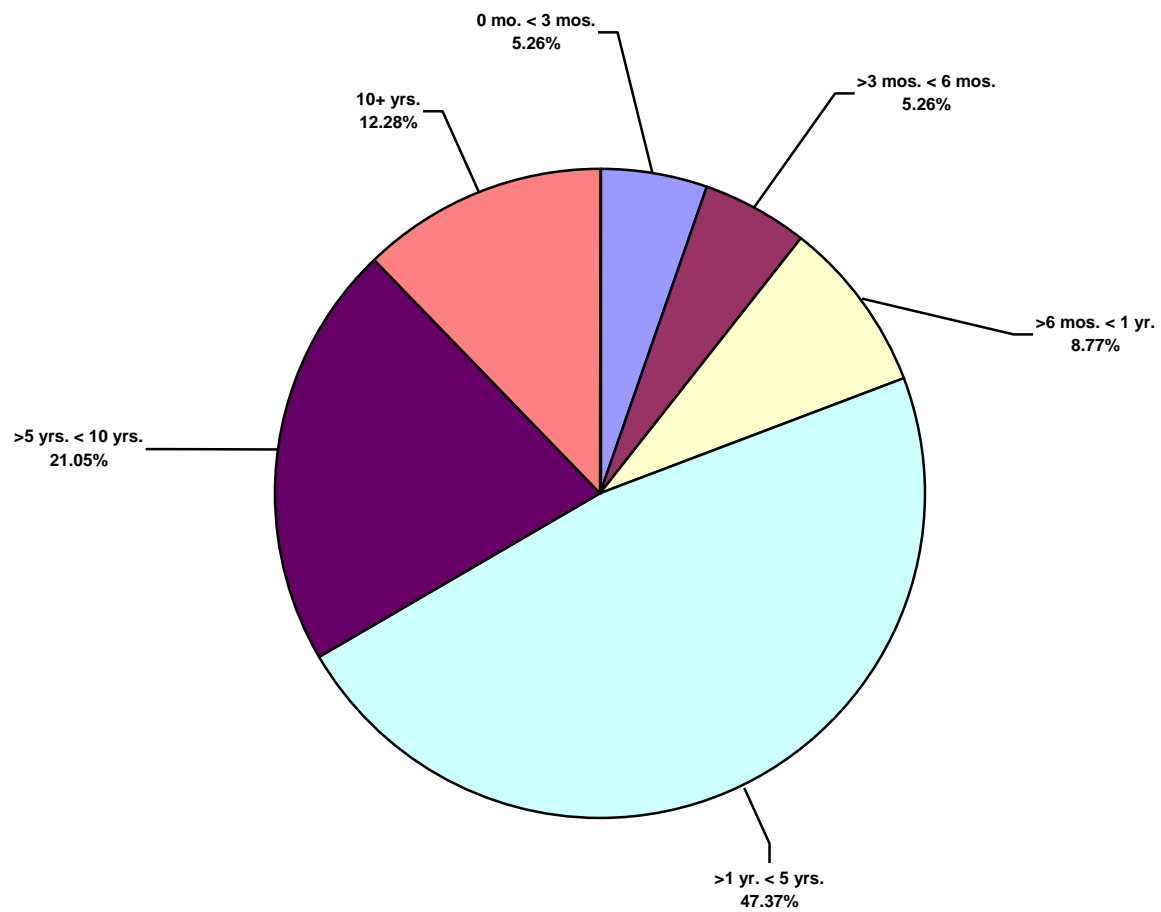
**Middle East Water Total Recordable Incidents by Location (Chart 14)**  
Based on 58 Incidents



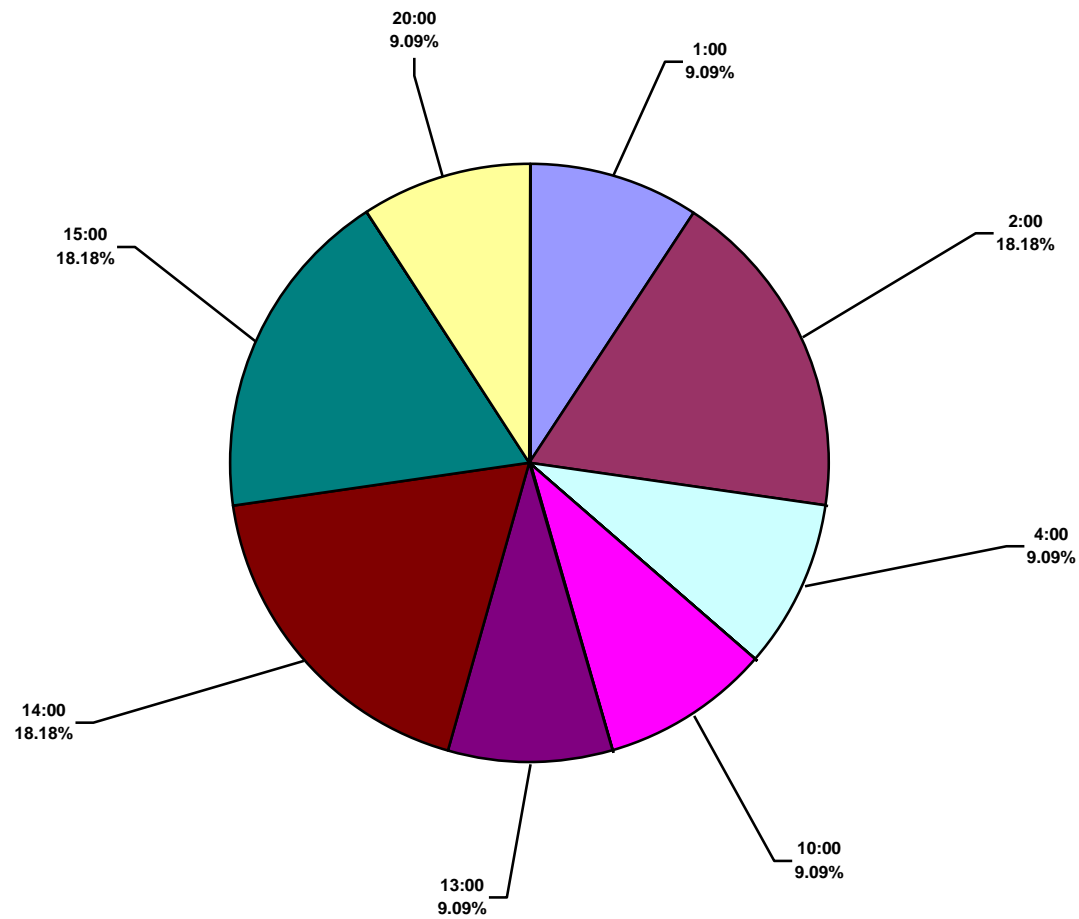
**Middle East Water Total Lost Time Incidents by Time in Service (Chart 15)**  
Based on 11 Incidents



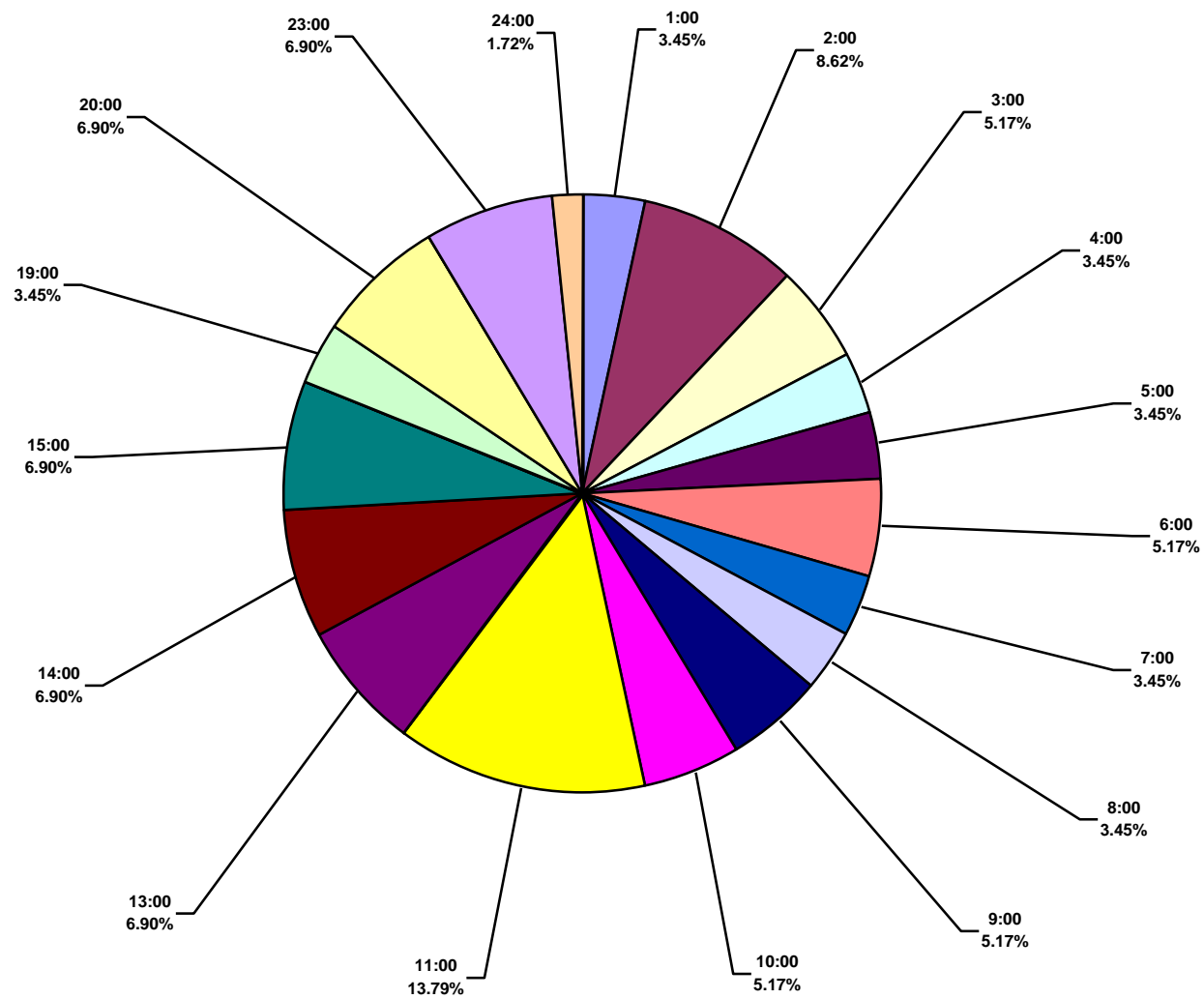
**Middle East Water Total Recordable Incidents by Time in Service (Chart 16)**  
Based on 57 Incidents



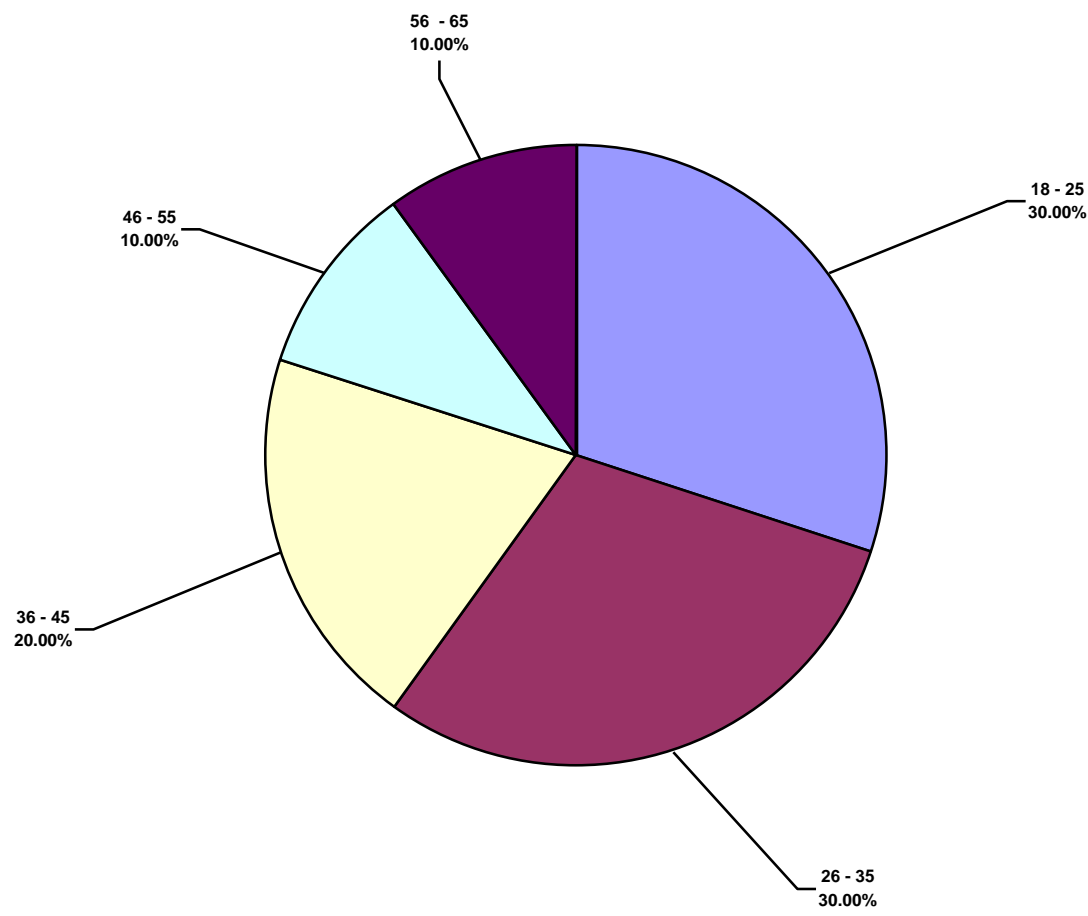
**Middle East Water Total Lost Time Incidents by Time of Day (Chart 17)**  
Based on 11 Incidents



**Middle East Water Total Recordable Incidents by Time of Day (Chart 18)**  
Based on 58 Incidents



**Middle East Water Total Lost Time Incidents by Age (Chart 19)**  
Based on 10 Incidents



**Middle East Water Total Recordable Incidents by Age (Chart 20)**  
Based on 51 Incidents

