



IADC

**IADC
ISP PROGRAM**

2017



**Summary of Occupational
Incidents
(US Land Totals)**

Issued 15 June 2018

Table of Contents

(Table of Contents is Hyperlinked, Just click on Topic & go)

IADC 2017 US LAND TOTALS (TABLE 1).....	1
<i>US Land Total Incidence Rates vs Man-hours (Figure 1)</i>	1
IADC 2017 US LAND CHARTS	2
<i>US Land Total Lost Time Incidents by Month (Chart 1)</i>	2
<i>US Land Total Recordable Incidents by Month (Chart 2)</i>	3
<i>US Land Total Lost Time Incidents by Occupation (Chart 3)</i>	4
<i>US Land Total Recordable Incidents by Occupation (Chart 4)</i>	5
<i>US Land Total Lost Time Incidents by Body Part (Chart 5)</i>	6
<i>US Land Total Recordable Incidents by Body Part (Chart 6)</i>	7
<i>US Land Total Lost Time Incidents by Incident Type (Chart 7)</i>	8
<i>US Land Total Recordable Incidents by Incident Type (Chart 8)</i>	9
<i>US Land Total Lost Time Incidents by Equipment (Chart 9)</i>	10
<i>US Land Total Recordable Incidents by Equipment (Chart 10)</i>	11
<i>US Land Total Lost Time Incidents by Operation (Chart 11)</i>	12
<i>US Land Total Recordable Incidents by Operation (Chart 12)</i>	13
<i>US Land Total Lost Time Incidents by Location (Chart 13)</i>	14
<i>US Land Total Recordable Incidents by Location (Chart 14)</i>	15
<i>US Land Total Lost Time Incidents by Time in Service (Chart 15)</i>	16
<i>US Land Total Recordable Incidents by Time in Service (Chart 16)</i>	17
<i>US Land Total Lost Time Incidents by Time of Day (Chart 17)</i>	18
<i>US Land Total Recordable Incidents by Time of Day (Chart 18)</i>	19
<i>US Land Total Lost Time Incidents by Age (Chart 19)</i>	20
<i>US Land Total Recordable Incidents by Age (Chart 20)</i>	21

IADC 2017 US Land Totals (Table 1)

	<u>Total</u>
Total Man-hours	55,488,587
Total Medical Treatment Incidents	164
Total Restricted Work Incidents	135
Total Lost Time Incidents	117
Total Fatalities	1
Total Recordables	417
MTO Incidence Rate	0.59
RWC Incidence Rate	0.49
LTI Incidence Rate	0.43
LTI Frequency Rate	2.13
DART Incidence Rate	0.91
DART Frequency Rate	4.56
Recordable Incidence Rate	1.50
Recordable Frequency Rate	7.52

Companies Reporting: Land – 29

Medical Treatment Incidence Rate = MTOs X 200,000

Restricted Work Incidence Rate = RWCs X 200,000

Lost Time Incidence Rate = LTIs + FTLs X 200,000

DART Incidence Rate = LTIs + RWC X 200,000

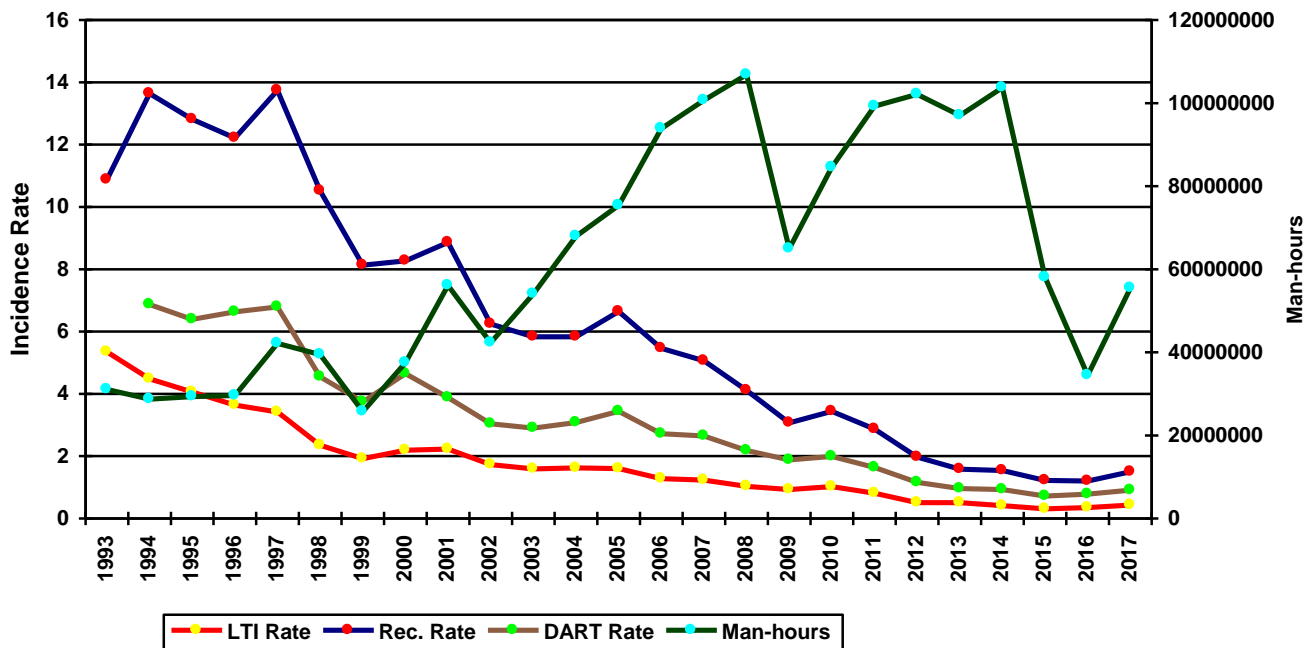
Recordable Incidence Rate = RCRD X 200,000

Lost Time Frequency Rate = LTIs +FTLs X 1,000,000

DART Frequency Rate = LTIs + RWC X 1,000,000

Recordable Frequency Rate = RCRD X 1,000,000

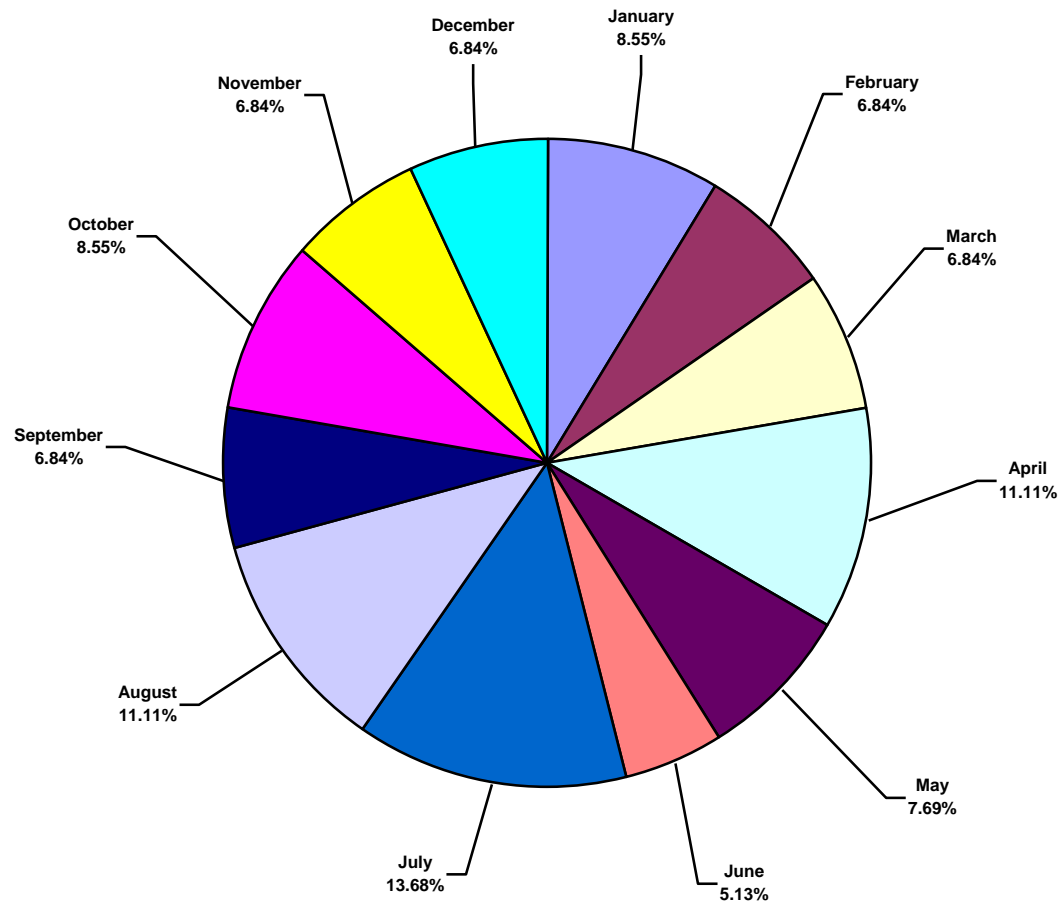
US Land Total Incidence Rates vs Man-hours (Figure 1)



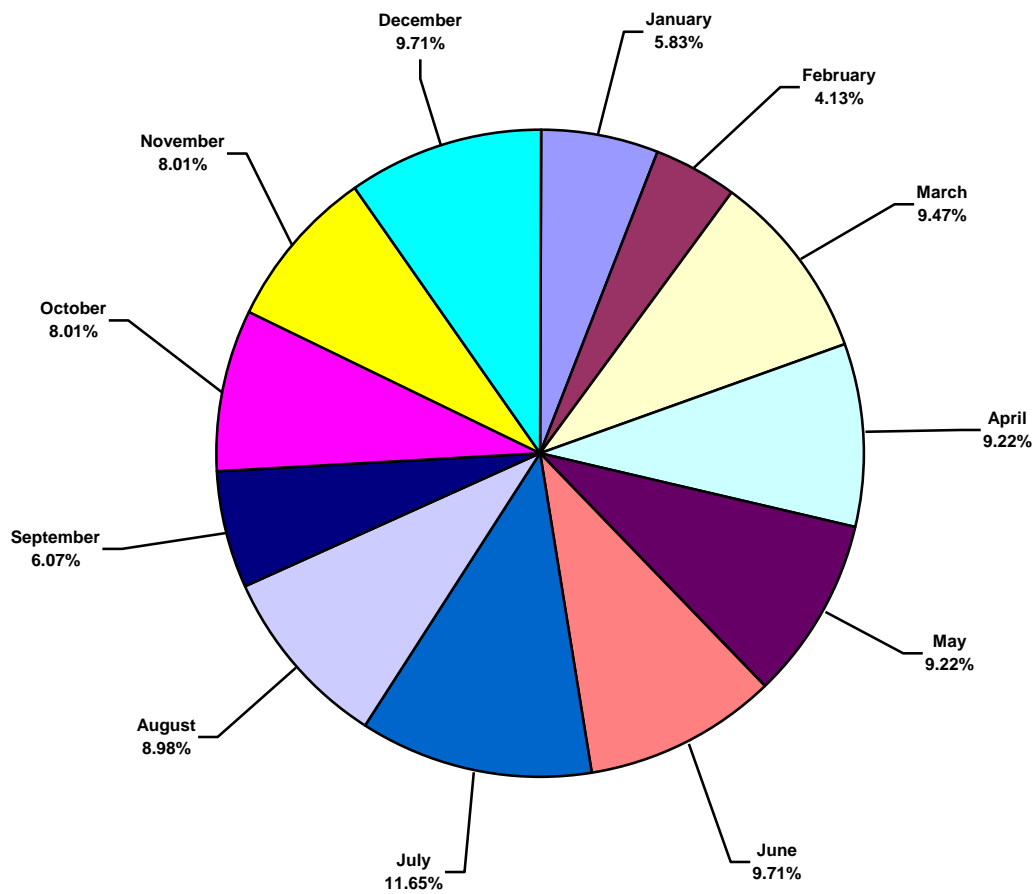
IADC 2017 US Land Charts

US Land Total Lost Time Incidents by Month (Chart 1)

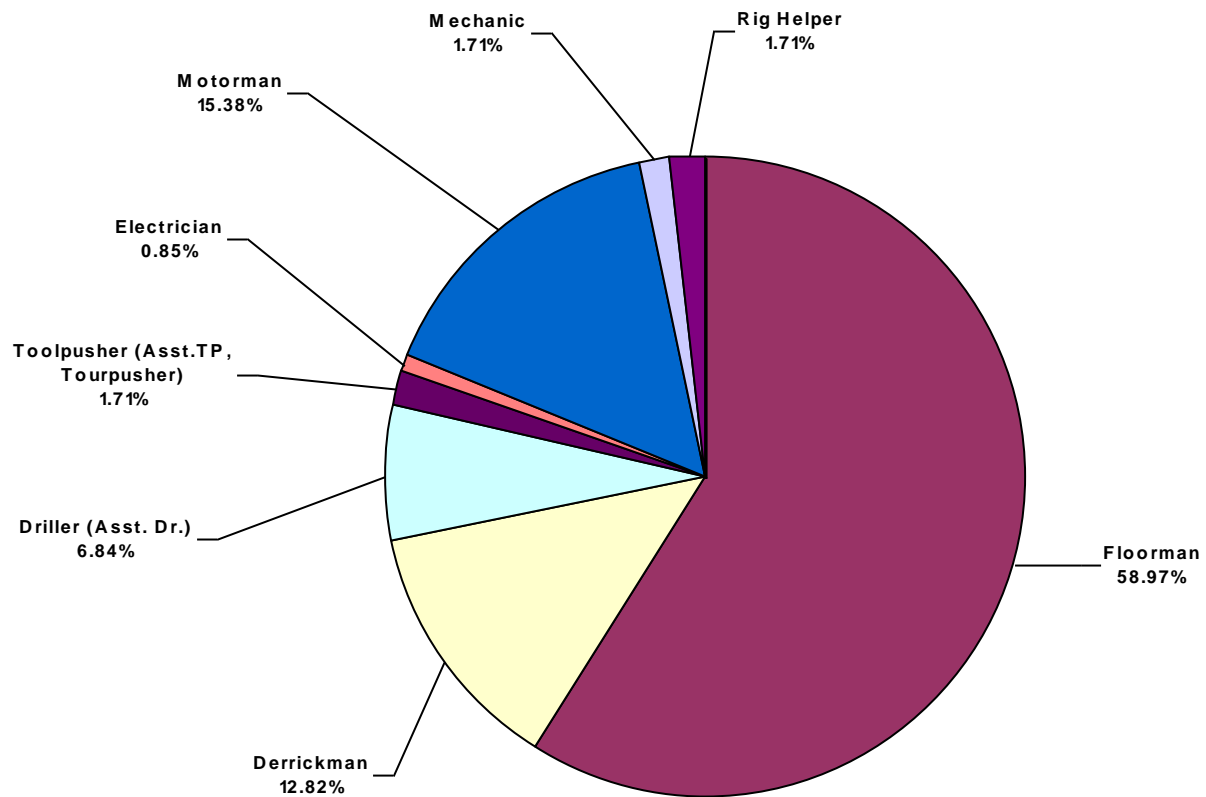
Based on 117 Incidents



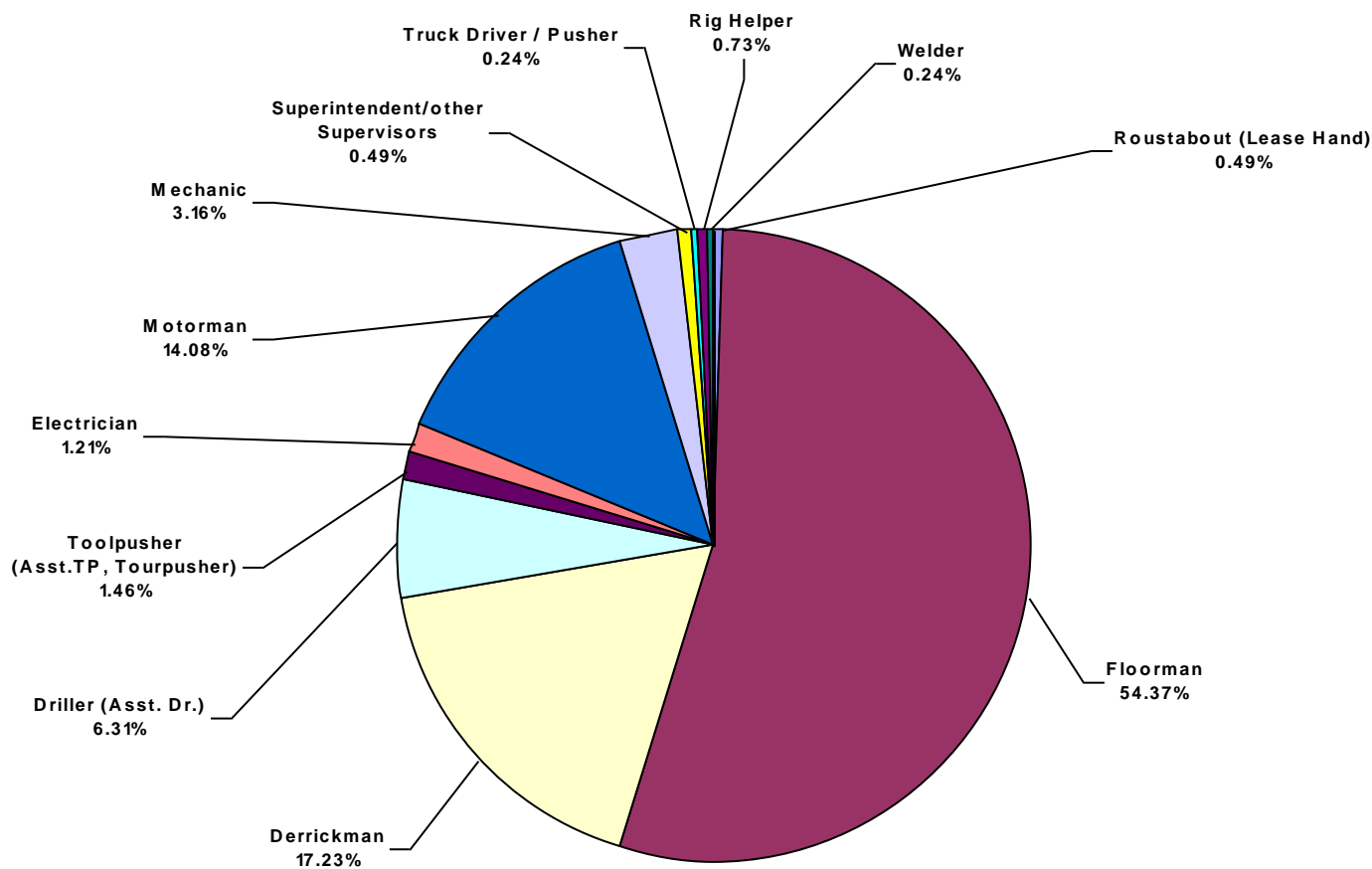
US Land Total Recordable Incidents by Month (Chart 2)
Based on 412 Incidents



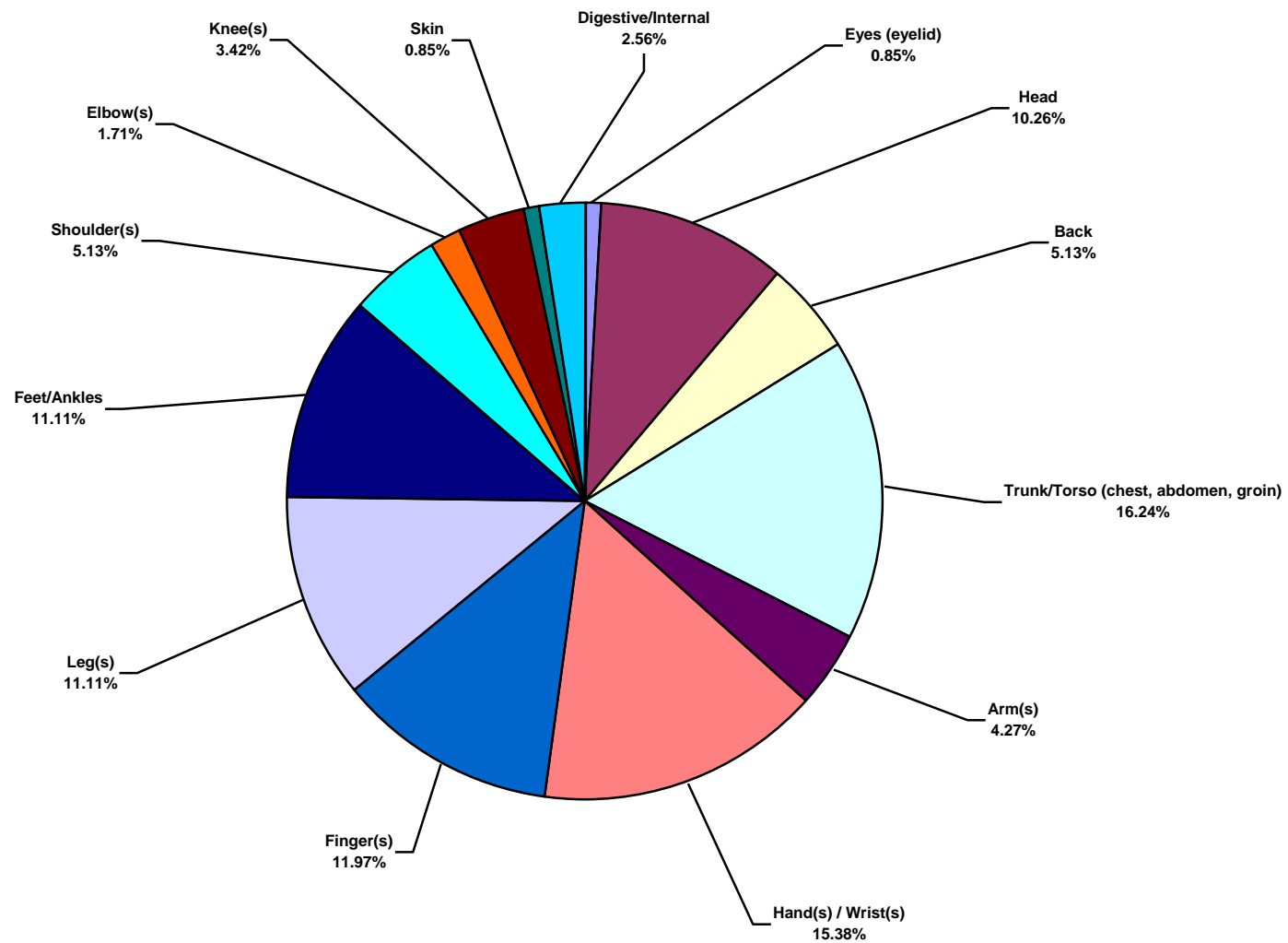
US Land Total Lost Time Incidents by Occupation (Chart 3)
Based on 117 Incidents



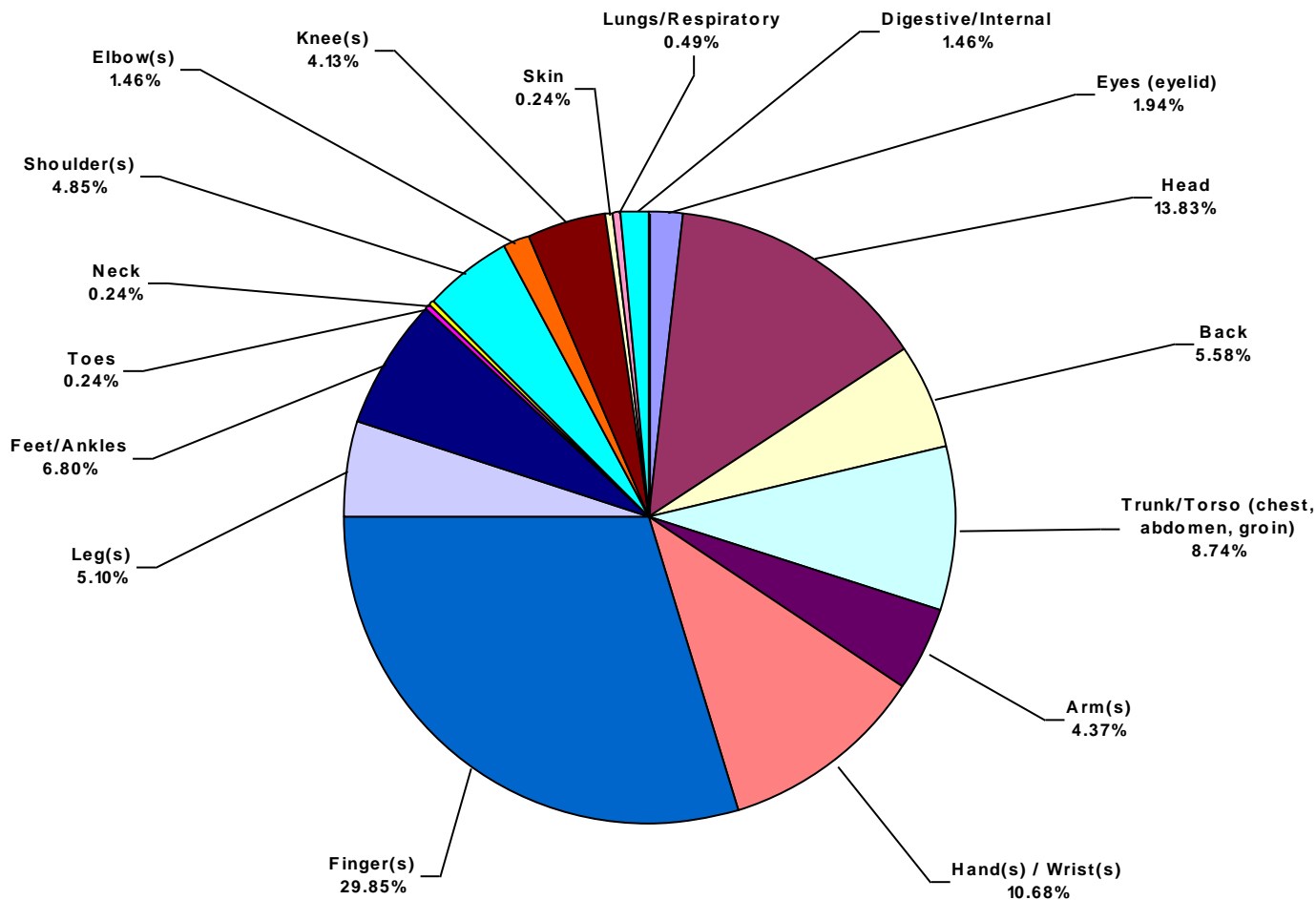
US Land Total Recordable Incidents by Occupation (Chart 4)
Based on 412 Incidents



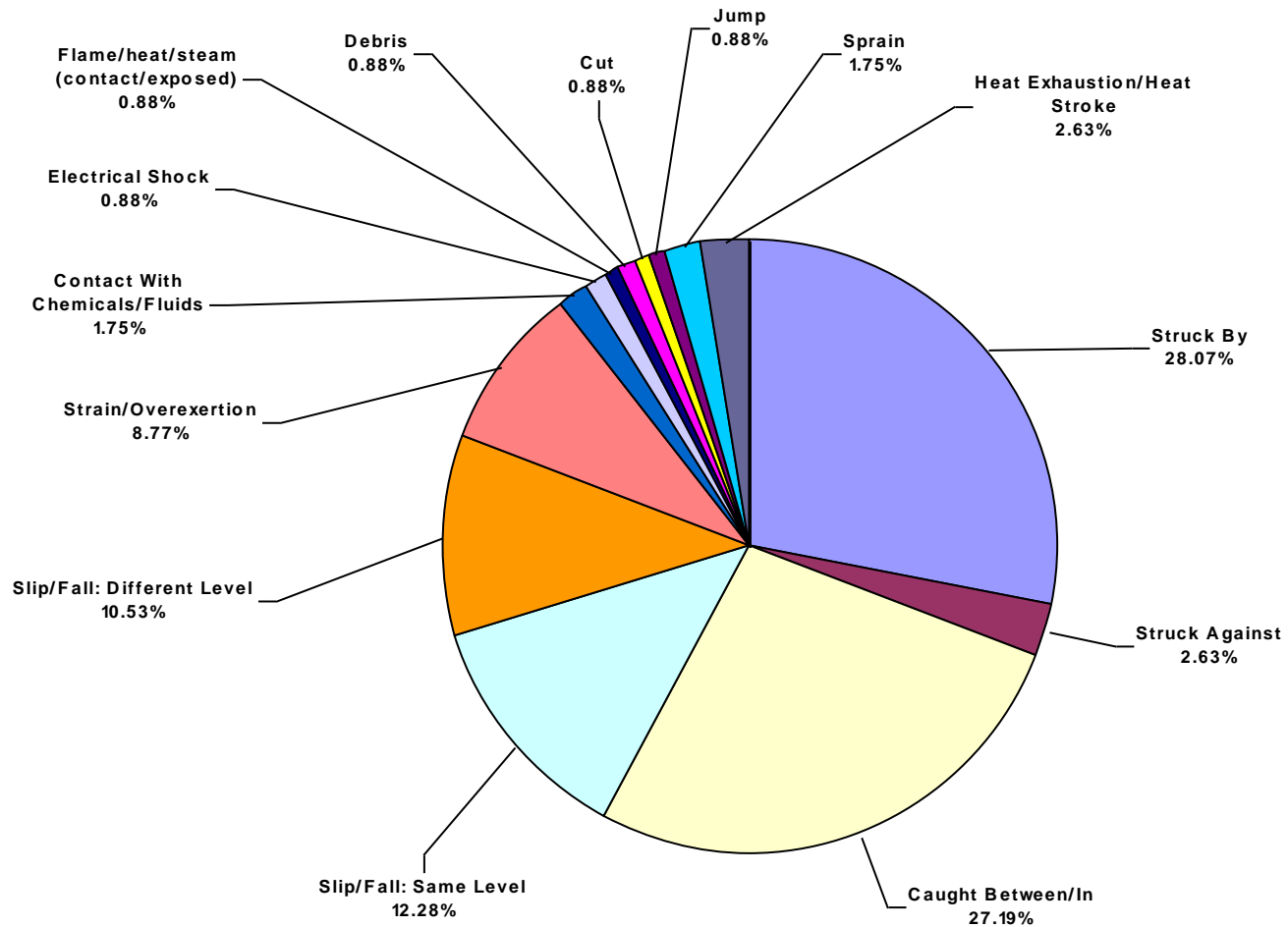
US Land Total Lost Time Incidents by Body Part (Chart 5)
Based on 117 Incidents



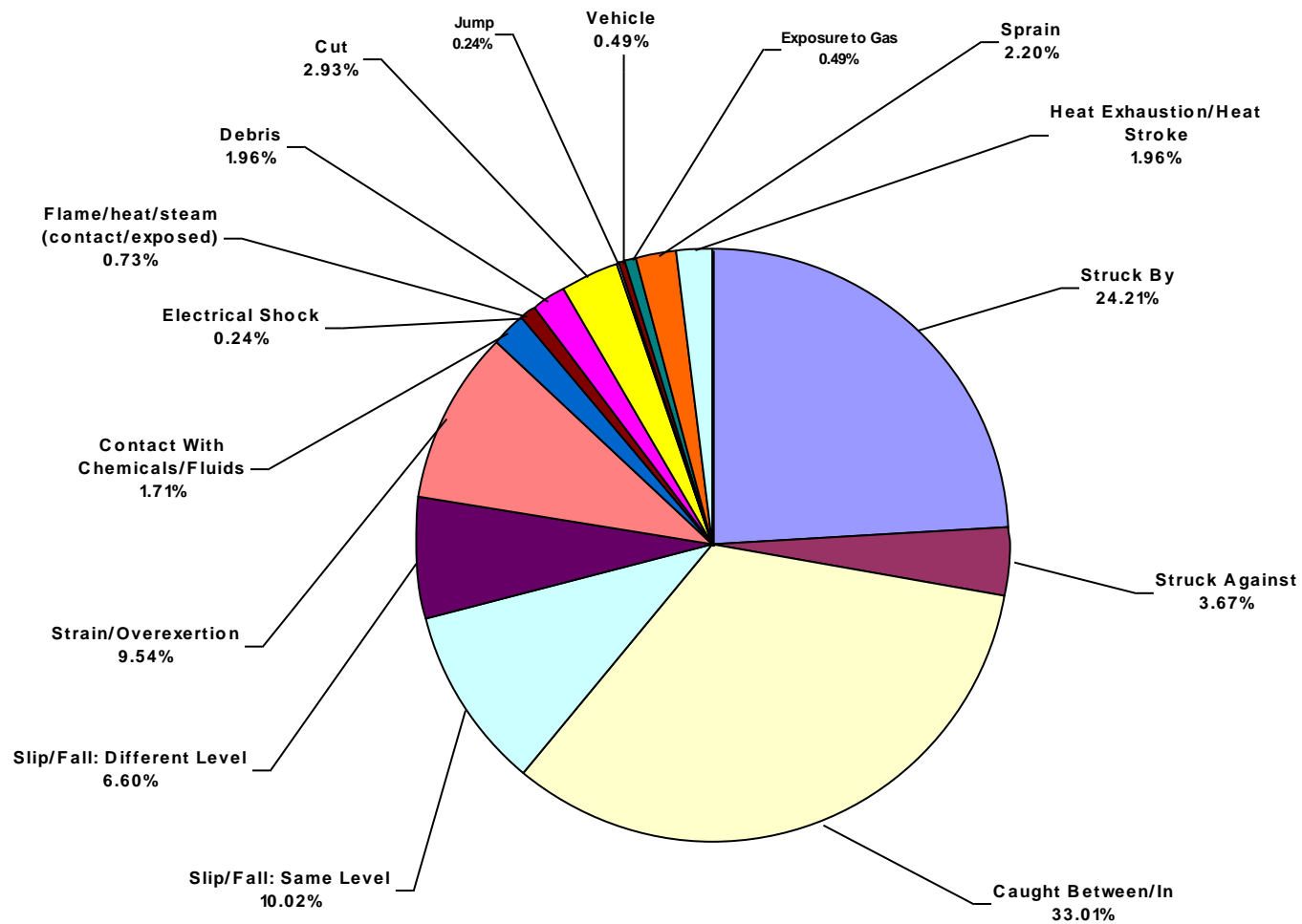
US Land Total Recordable Incidents by Body Part (Chart 6)
Based on 412 Incidents



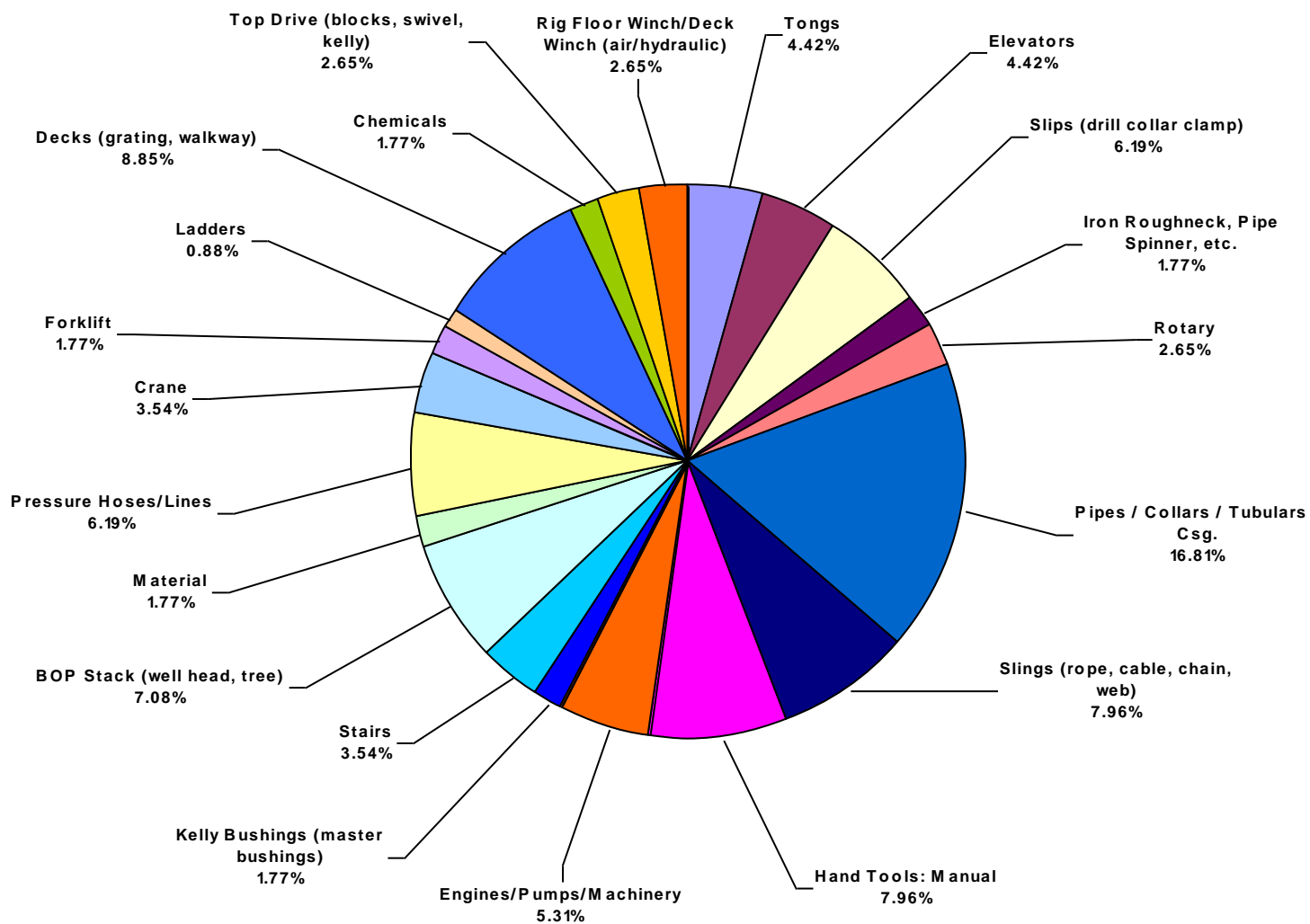
US Land Total Lost Time Incidents by Incident Type (Chart 7)
Based on 114 Incidents



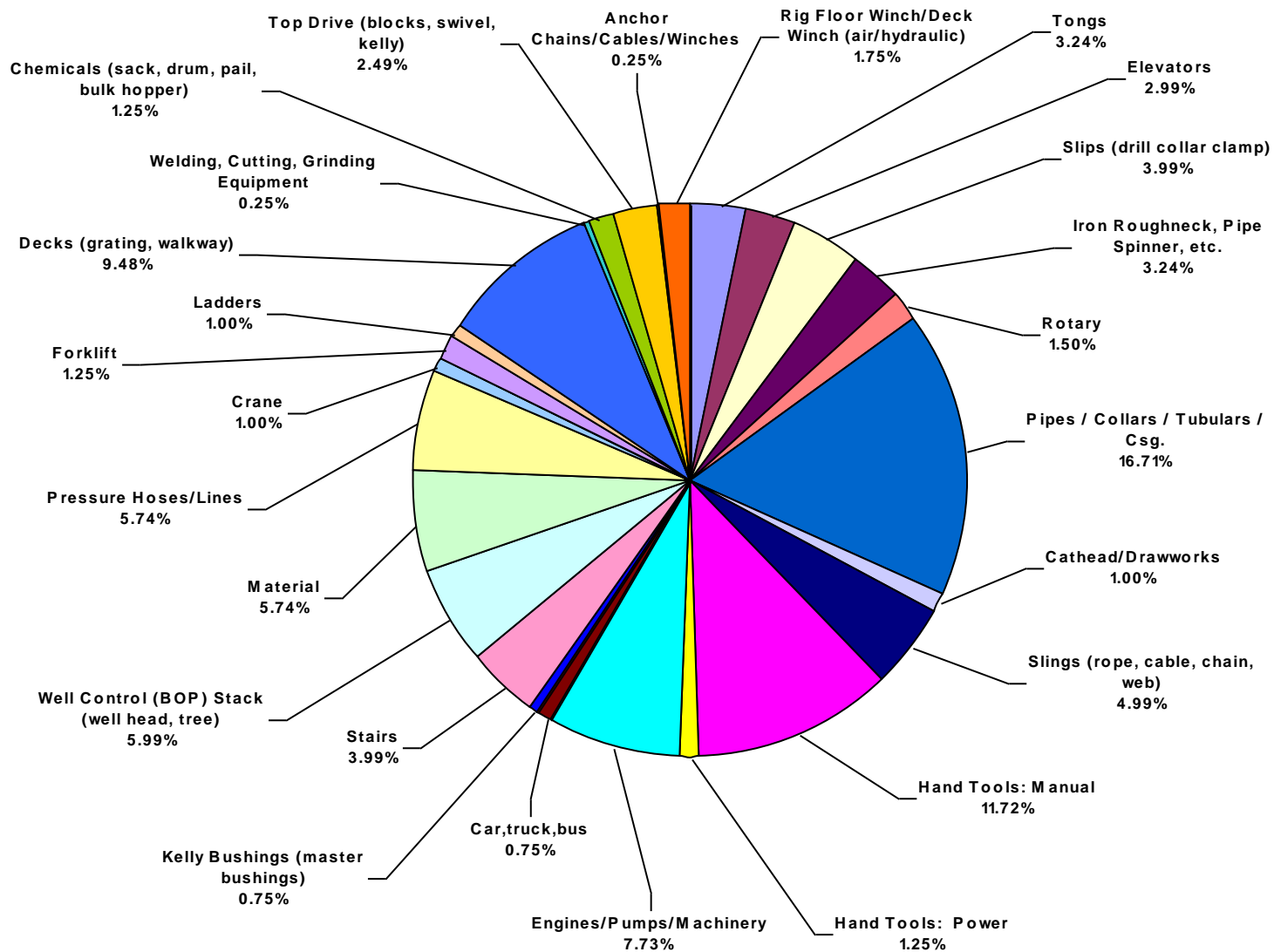
US Land Total Recordable Incidents by Incident Type (Chart 8)
Based on 409 Incidents



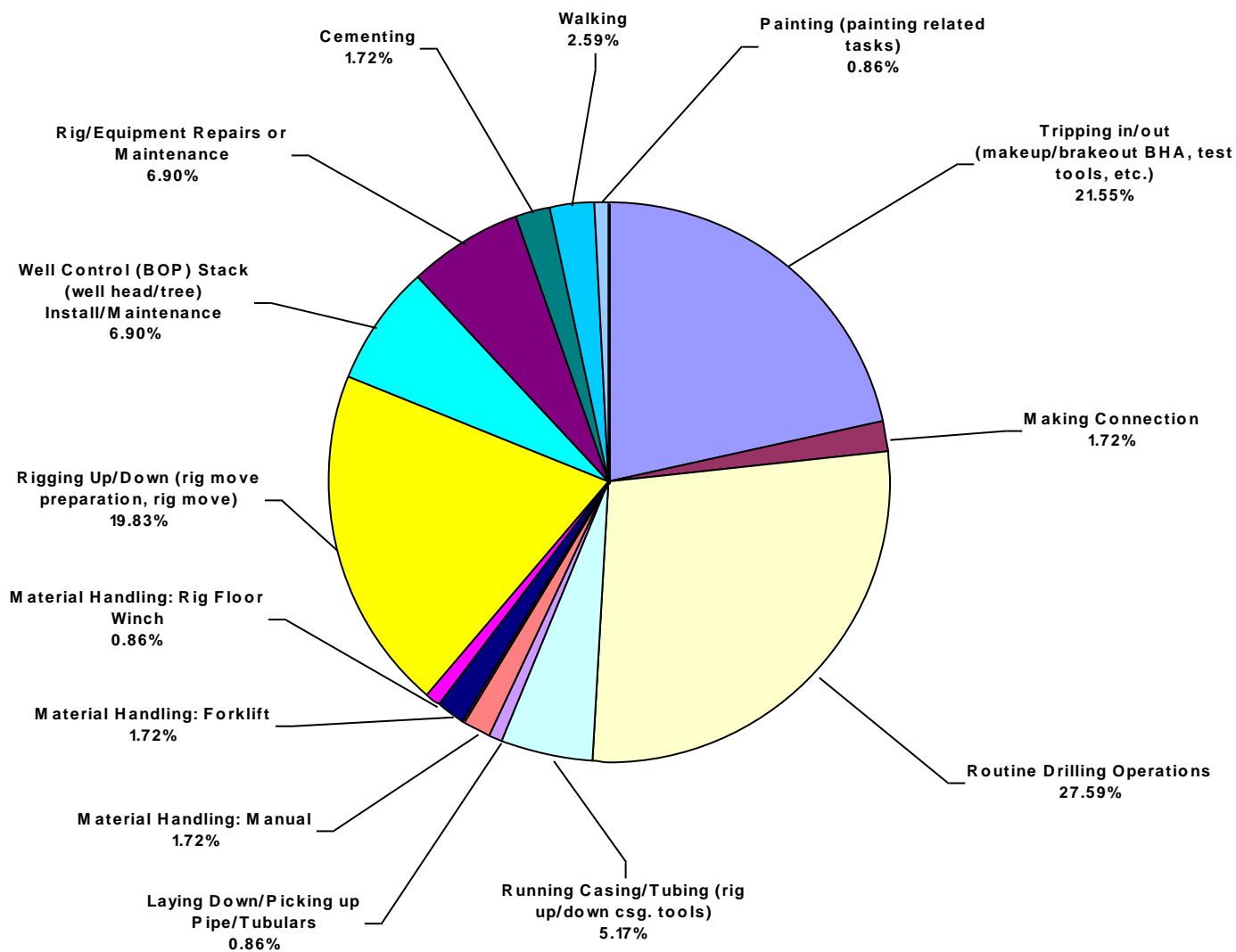
US Land Total Lost Time Incidents by Equipment (Chart 9)
Based on 113 Incidents



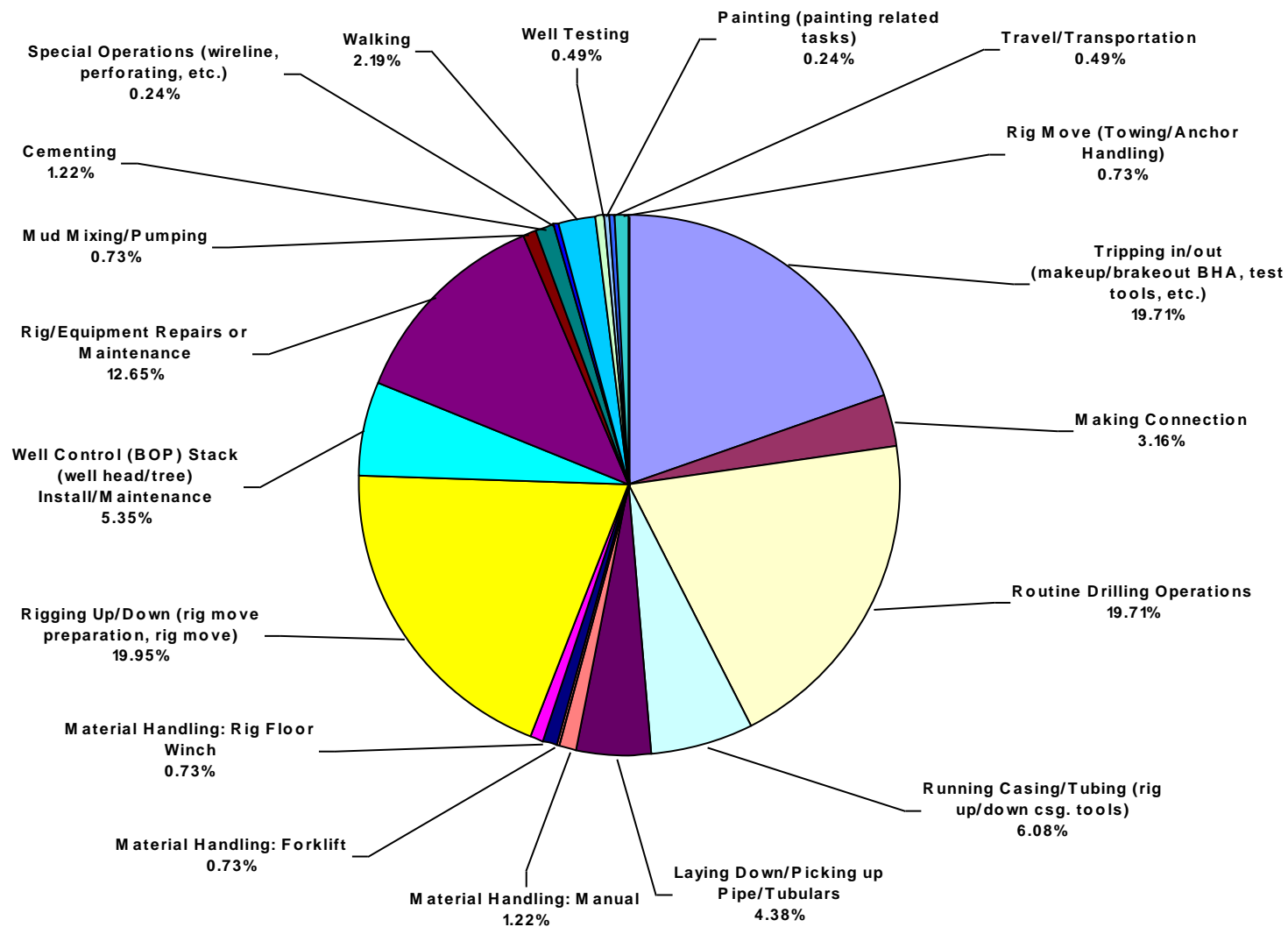
US Land Total Recordable Incidents by Equipment (Chart 10)
Based on 401 Incidents



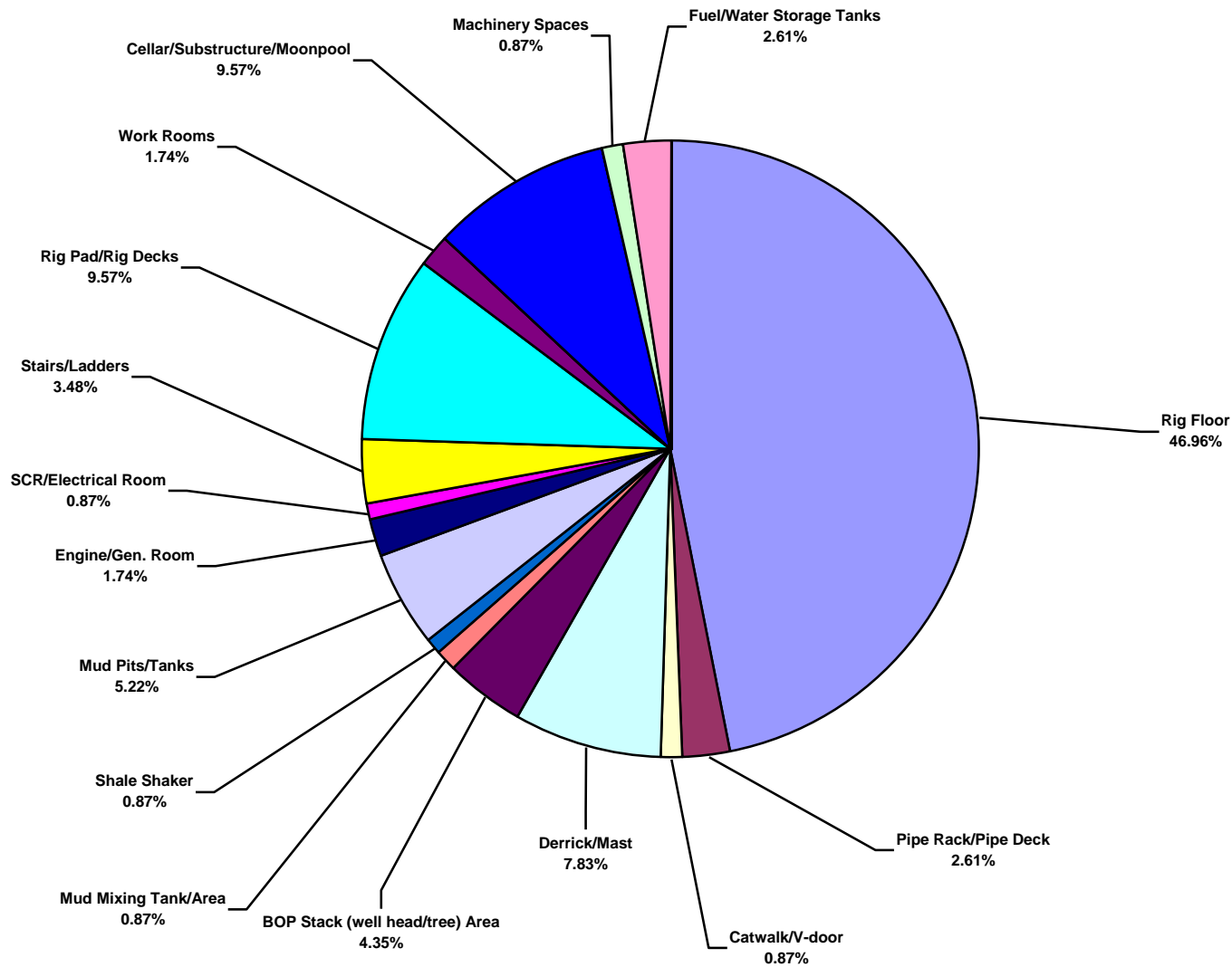
US Land Total Lost Time Incidents by Operation (Chart 11)
Based on 116 Incidents



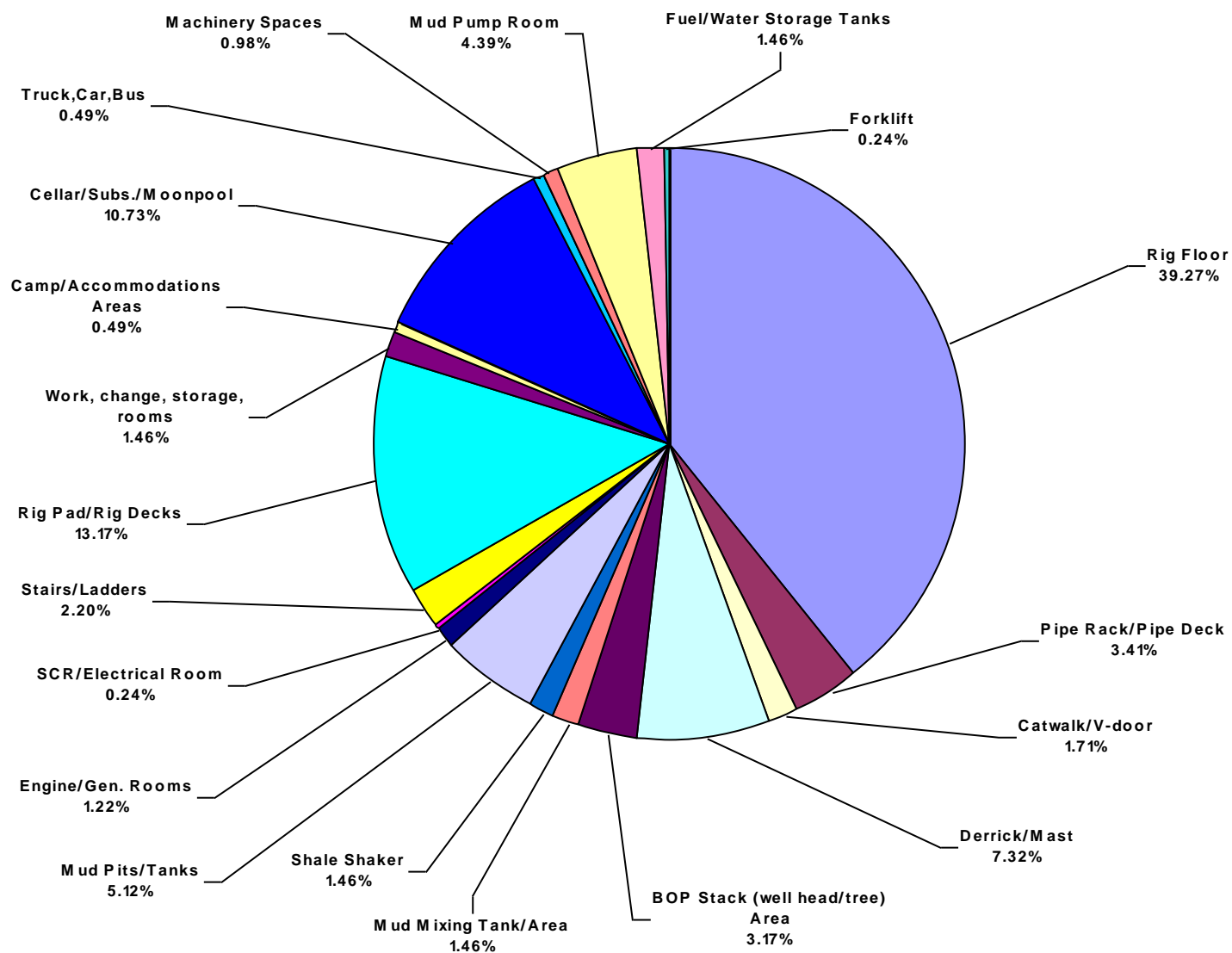
US Land Total Recordable Incidents by Operation (Chart 12)
 Based on 411 Incidents



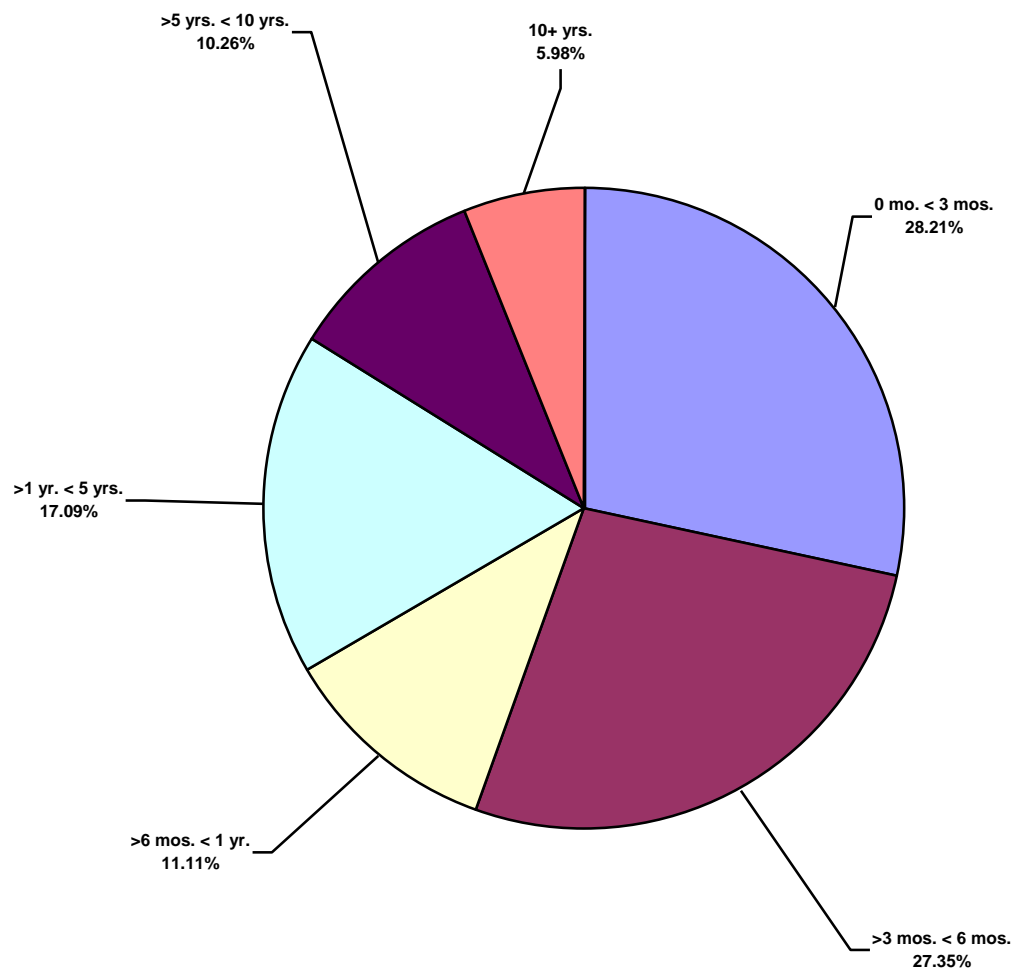
US Land Total Lost Time Incidents by Location (Chart 13)
Based on 115 Incidents



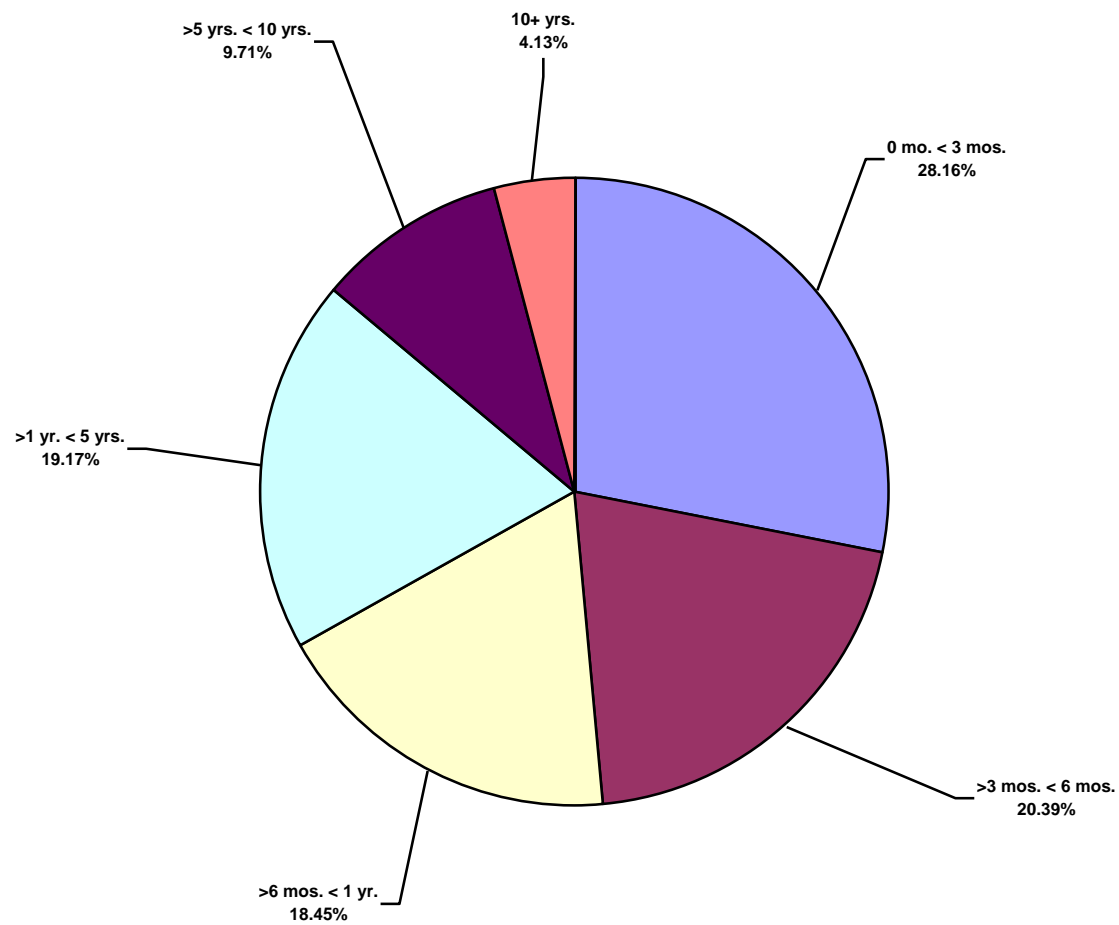
US Land Total Recordable Incidents by Location (Chart 14)
Based on 410 Incidents



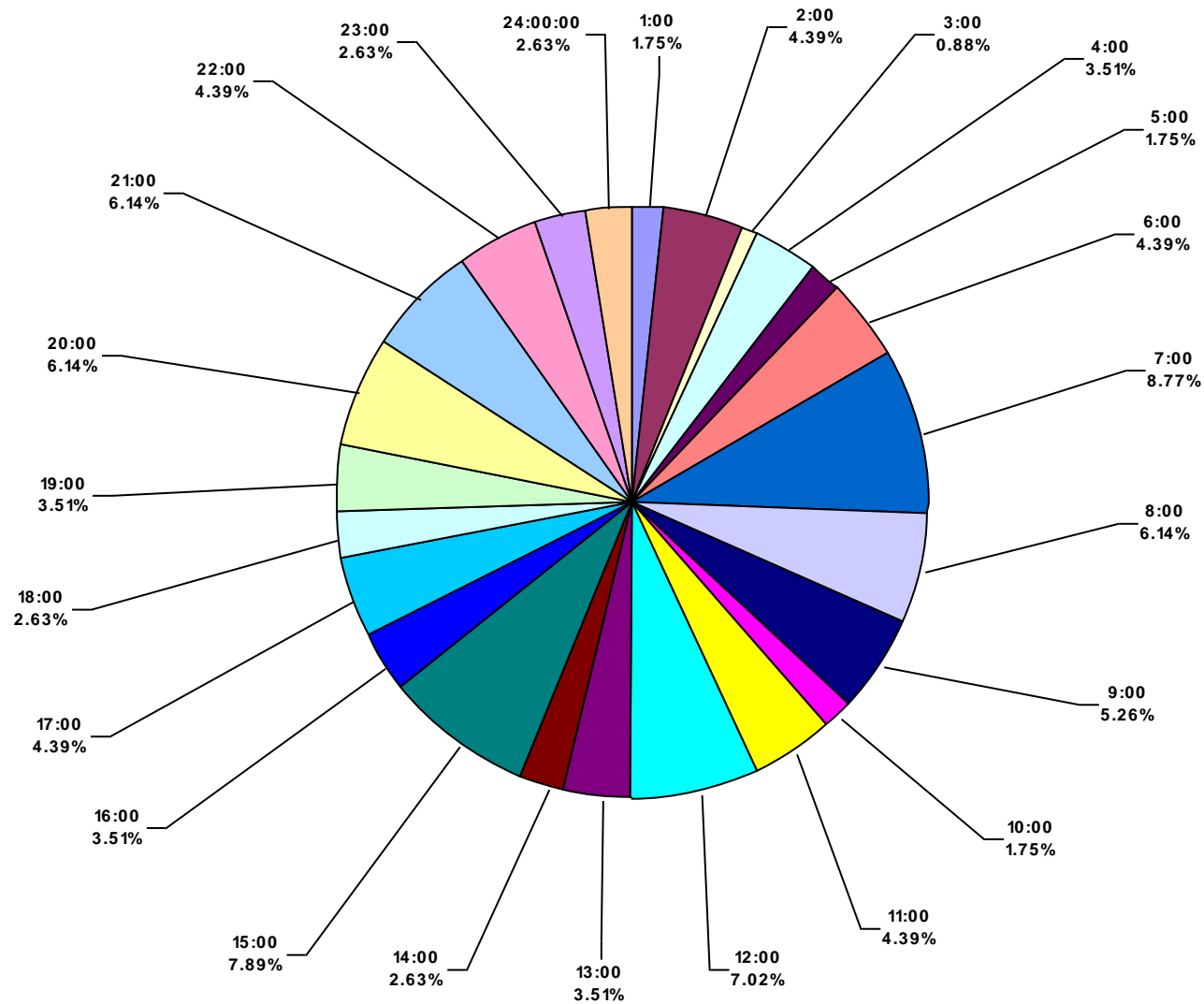
US Land Total Lost Time Incidents by Time in Service (Chart 15)
Based on 117 Incidents



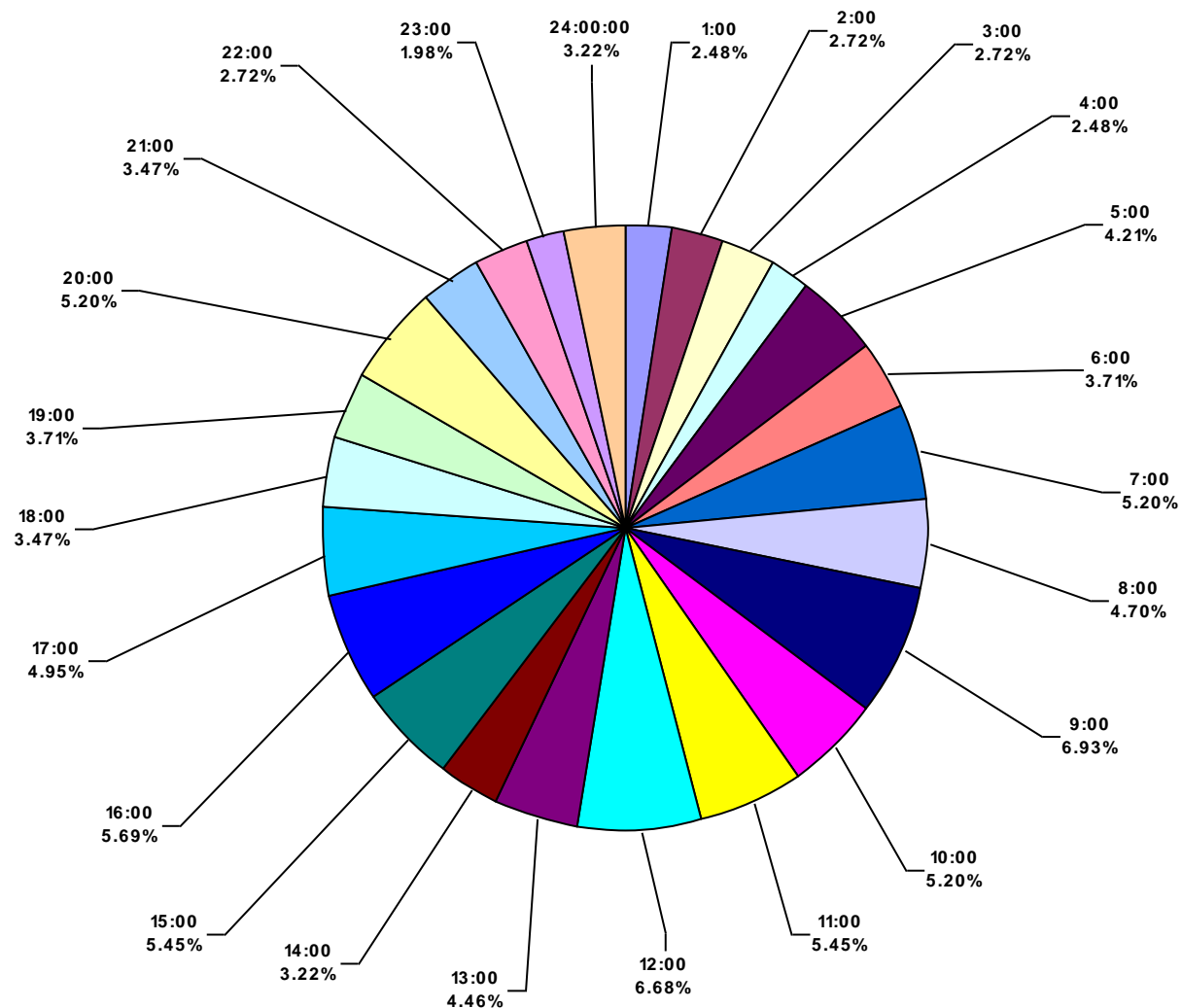
US Land Total Recordable Incidents by Time in Service (Chart 16)
Based on 412 Incidents



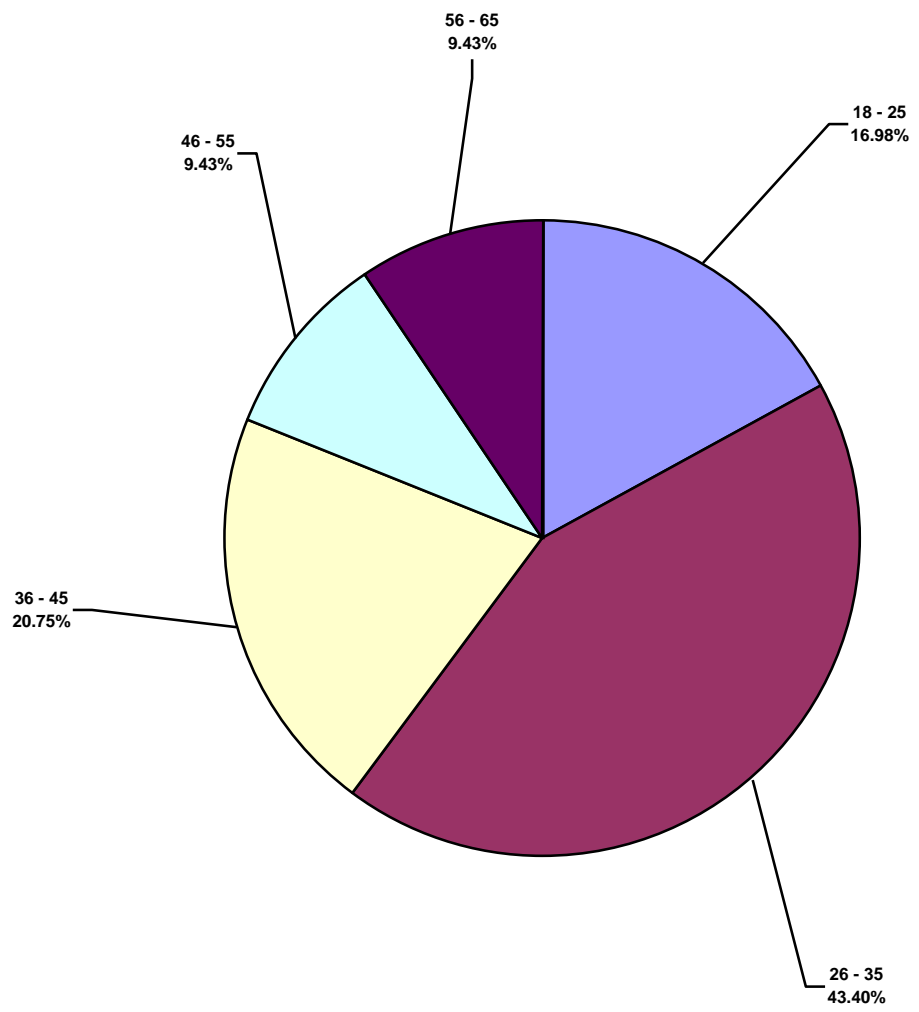
US Land Total Lost Time Incidents by Time of Day (Chart 17)
Based on 114 Incidents



US Land Total Recordable Incidents by Time of Day (Chart 18)
Based on 404 Incidents



US Land Total Lost Time Incidents by Age (Chart 19)
Based on 106 Incidents



US Land Total Recordable Incidents by Age (Chart 20)
Based on 365 Incidents

