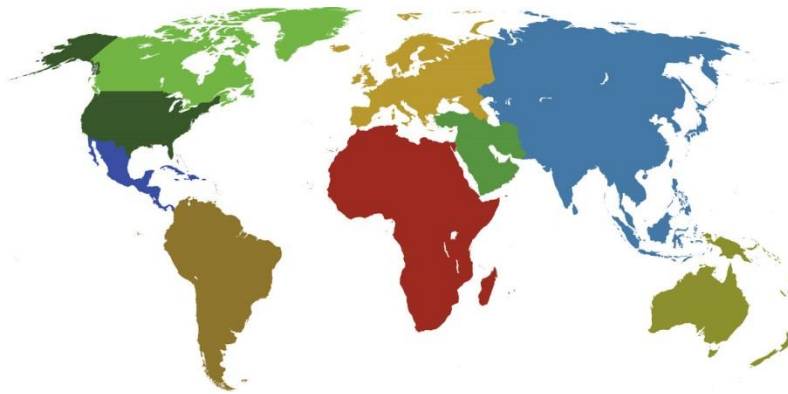




IADC

**IADC
ISP PROGRAM**

2017



**Summary of Occupational
Incidents
(European Land Totals)**

Issued 15 June 2018

Table of Contents

(Table of Contents is Hyperlinked, Just click on Topic & go)

IADC 2017 EUROPEAN LAND TOTALS (TABLE 1)	1
<i>European Land Total Incidence Rates vs Man-hours (Figure 1)</i>	1
IADC 2017 EUROPEAN LAND CHARTS	2
<i>European Land Total Lost Time Incidents by Month (Chart 1)</i>	2
<i>European Land Total Recordable Incidents by Month (Chart 2)</i>	3
<i>European Land Total Lost Time Incidents by Occupation (Chart 3)</i>	4
<i>European Land Total Recordable Incidents by Occupation (Chart 4)</i>	5
<i>European Land Total Lost Time Incidents by Body Part (Chart 5)</i>	6
<i>European Land Total Recordable Incidents by Body Part (Chart 6)</i>	7
<i>European Land Total Lost Time Incidents by Incident Type (Chart 7)</i>	8
<i>European Land Total Recordable Incidents by Incident Type (Chart 8)</i>	9
<i>European Land Total Lost Time Incidents by Equipment (Chart 9)</i>	10
<i>European Land Total Recordable Incidents by Equipment (Chart 10)</i>	11
<i>European Land Total Lost Time Incidents by Operation (Chart 11)</i>	12
<i>European Land Total Recordable Incidents by Operation (Chart 12)</i>	13
<i>European Land Total Lost Time Incidents by Location (Chart 13)</i>	14
<i>European Land Total Recordable Incidents by Location (Chart 14)</i>	15
<i>European Land Total Lost Time Incidents by Time in Service (Chart 15)</i>	16
<i>European Land Total Recordable Incidents by Time in Service (Chart 16)</i>	17
<i>European Land Total Lost Time Incidents by Time of Day (Chart 17)</i>	18
<i>European Land Total Recordable Incidents by Time of Day (Chart 18)</i>	19
<i>European Land Total Lost Time Incidents by Age (Chart 19)</i>	20
<i>European Land Total Recordable Incidents by Age (Chart 20)</i>	21

IADC 2017 European Land Totals (Table 1)

	<u>Total</u>
Total Man-hours	44,274,793
Total Medical Treatment Incidents	10
Total Restricted Work Incidents	8
Total Lost Time Incidents	43
Total Fatalities	3
Total Recordables	64
MTO Incidence Rate	0.05
RWC Incidence Rate	0.04
LTI Incidence Rate	0.21
LTI Frequency Rate	1.04
DART Incidence Rate	0.24
DART Frequency Rate	1.22
Recordable Incidence Rate	0.29
Recordable Frequency Rate	1.45

Companies Reporting: Land – 12

Medical Treatment Incidence Rate = MTOs X 200,000

Restricted Work Incidence Rate = RWCs X 200,000

Lost Time Incidence Rate = LTIs + FTLs X 200,000

DART Incidence Rate = LTIs + RWC X 200,000

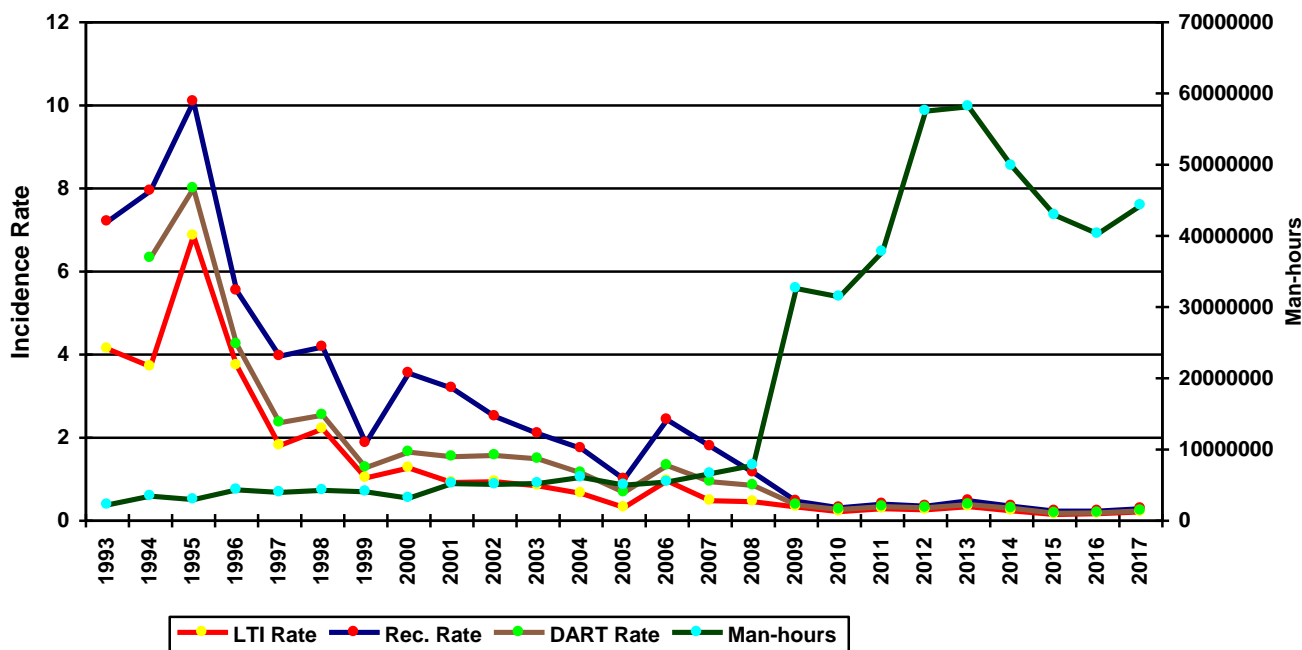
Recordable Incidence Rate = RCRD X 200,000

Lost Time Frequency Rate = LTIs +FTLs X 1,000,000

DART Frequency Rate = LTIs + RWC X 1,000,000

Recordable Frequency Rate = RCRD X 1,000,000

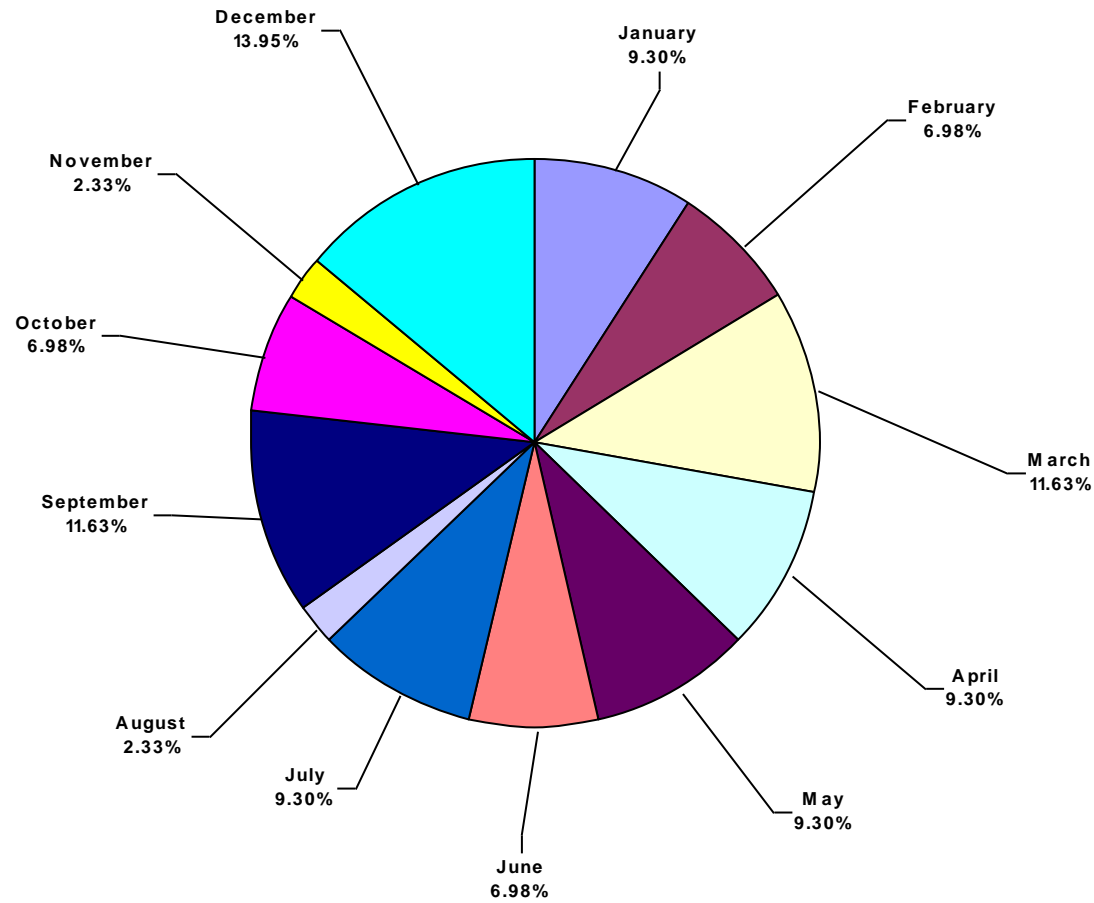
European Land Total Incidence Rates vs Man-hours (Figure 1)



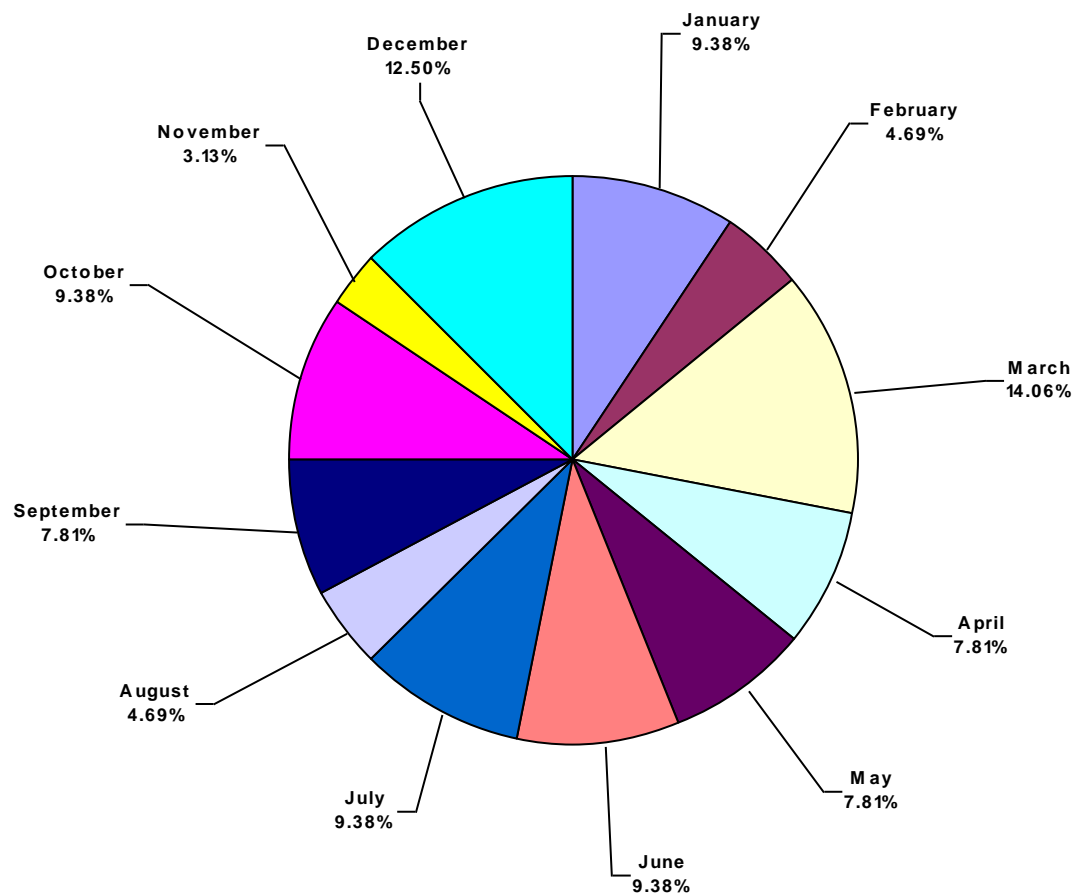
IADC 2017 European Land Charts

European Land Total Lost Time Incidents by Month (Chart 1)

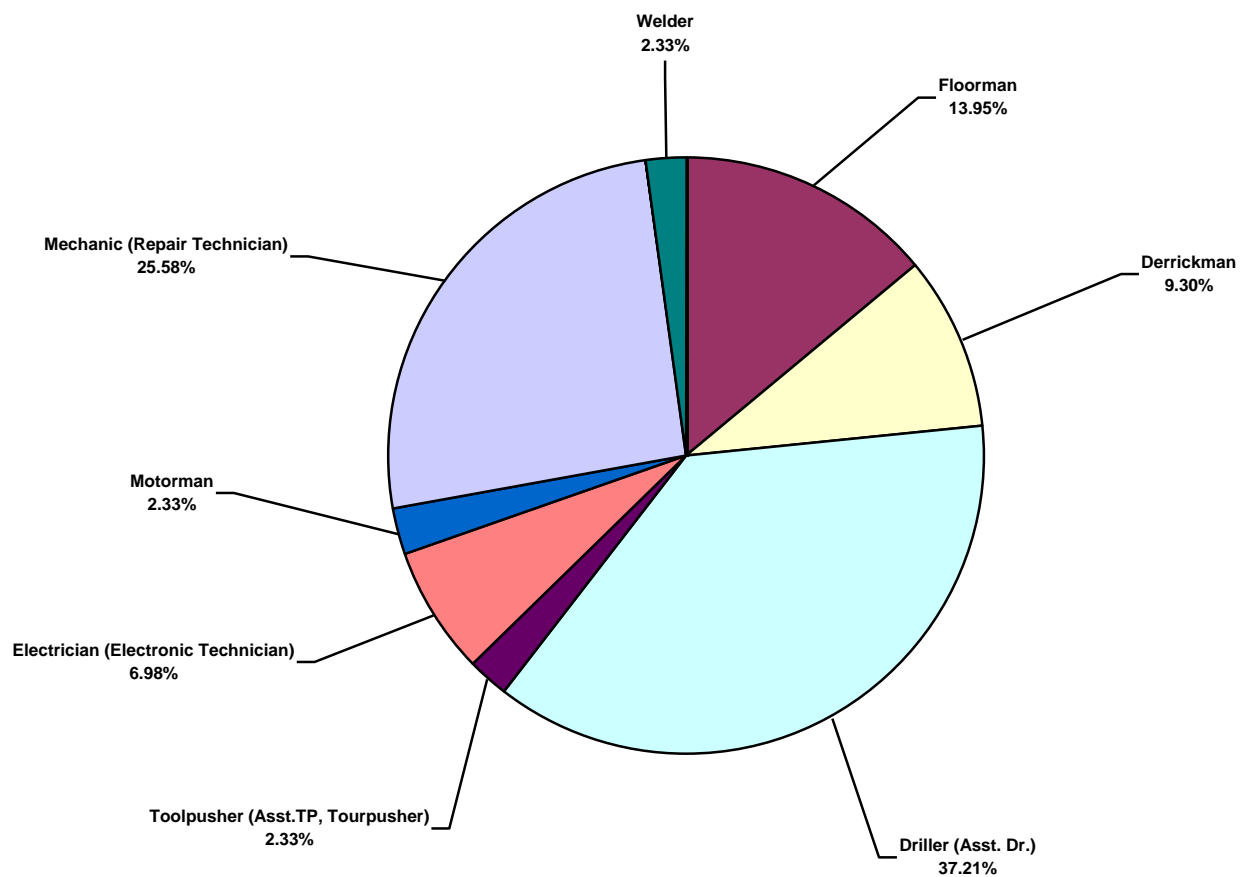
Based on 43 Incidents



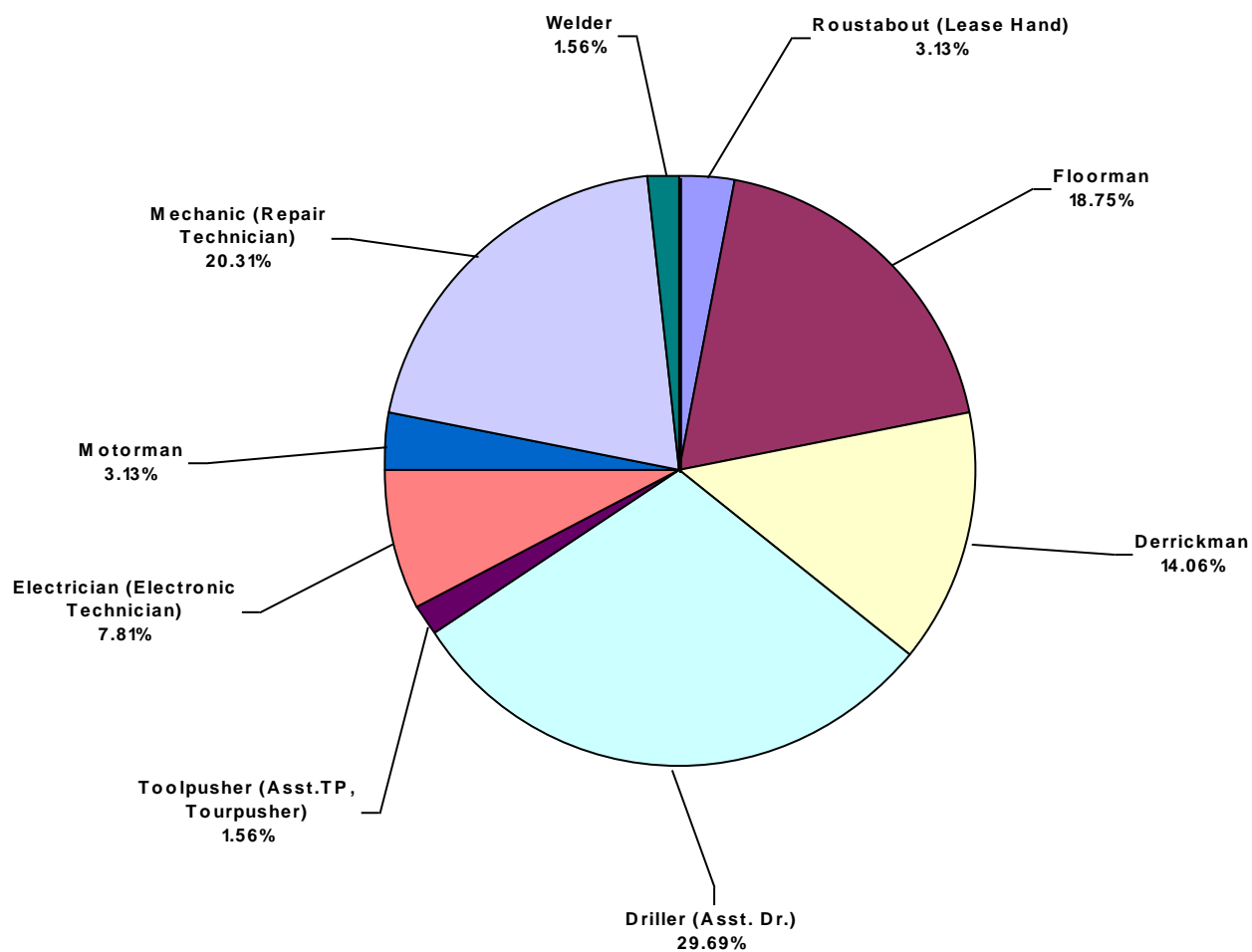
European Land Total Recordable Incidents by Month (Chart 2)
Based on 64 Incidents



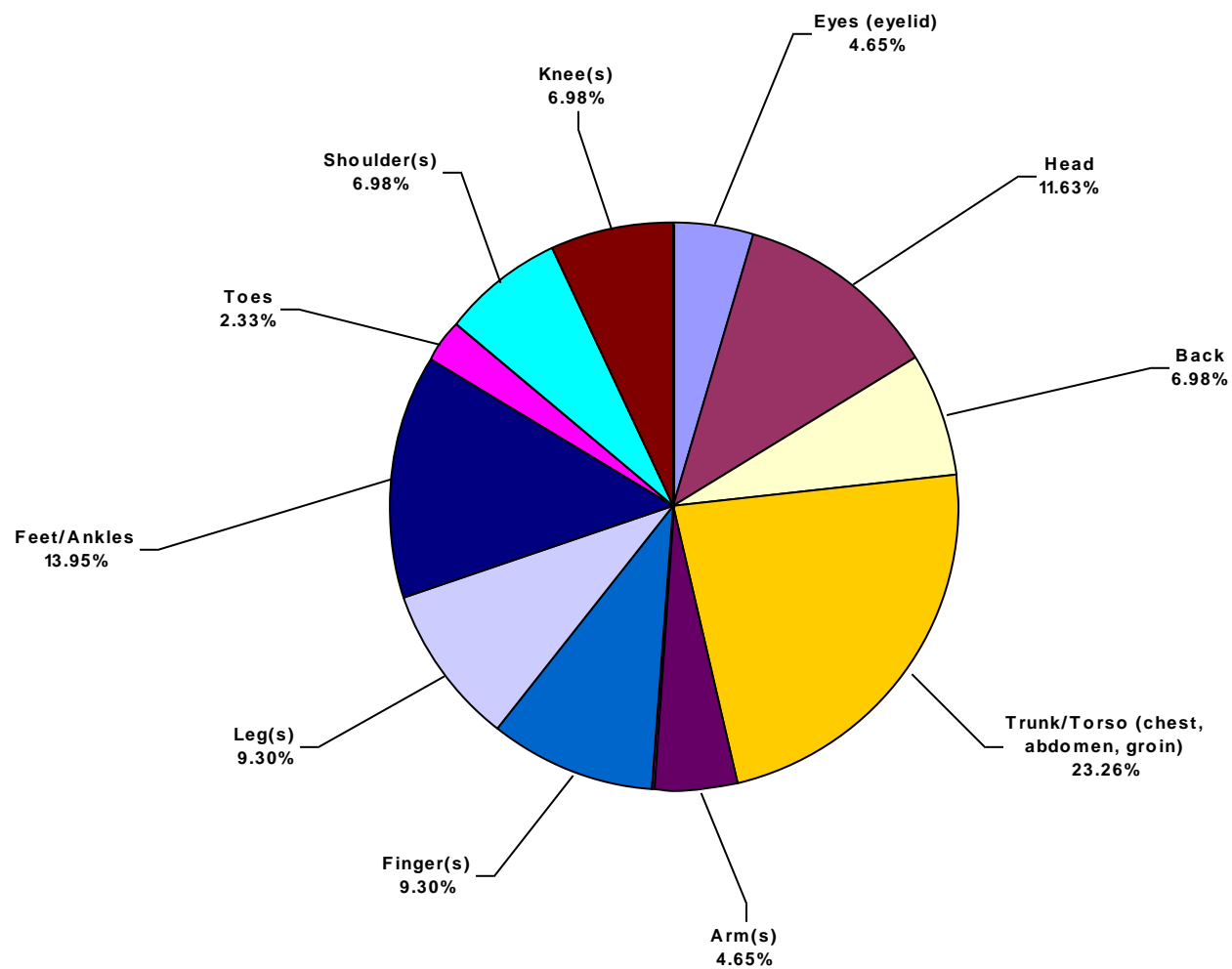
European Land Total Lost Time Incidents by Occupation (Chart 3)
Based on 43 Incidents



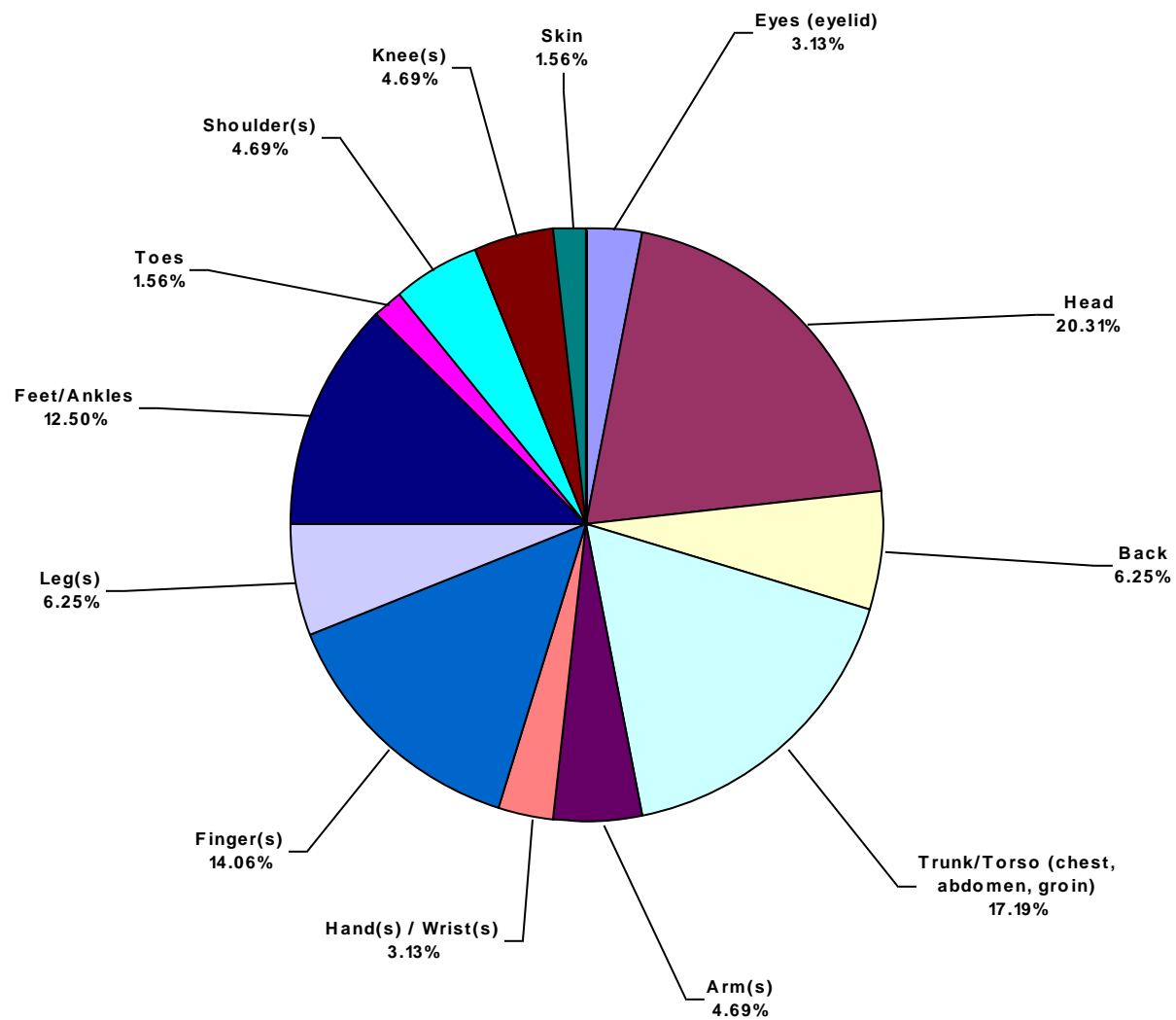
European Land Total Recordable Incidents by Occupation (Chart 4)
Based on 64 Incidents



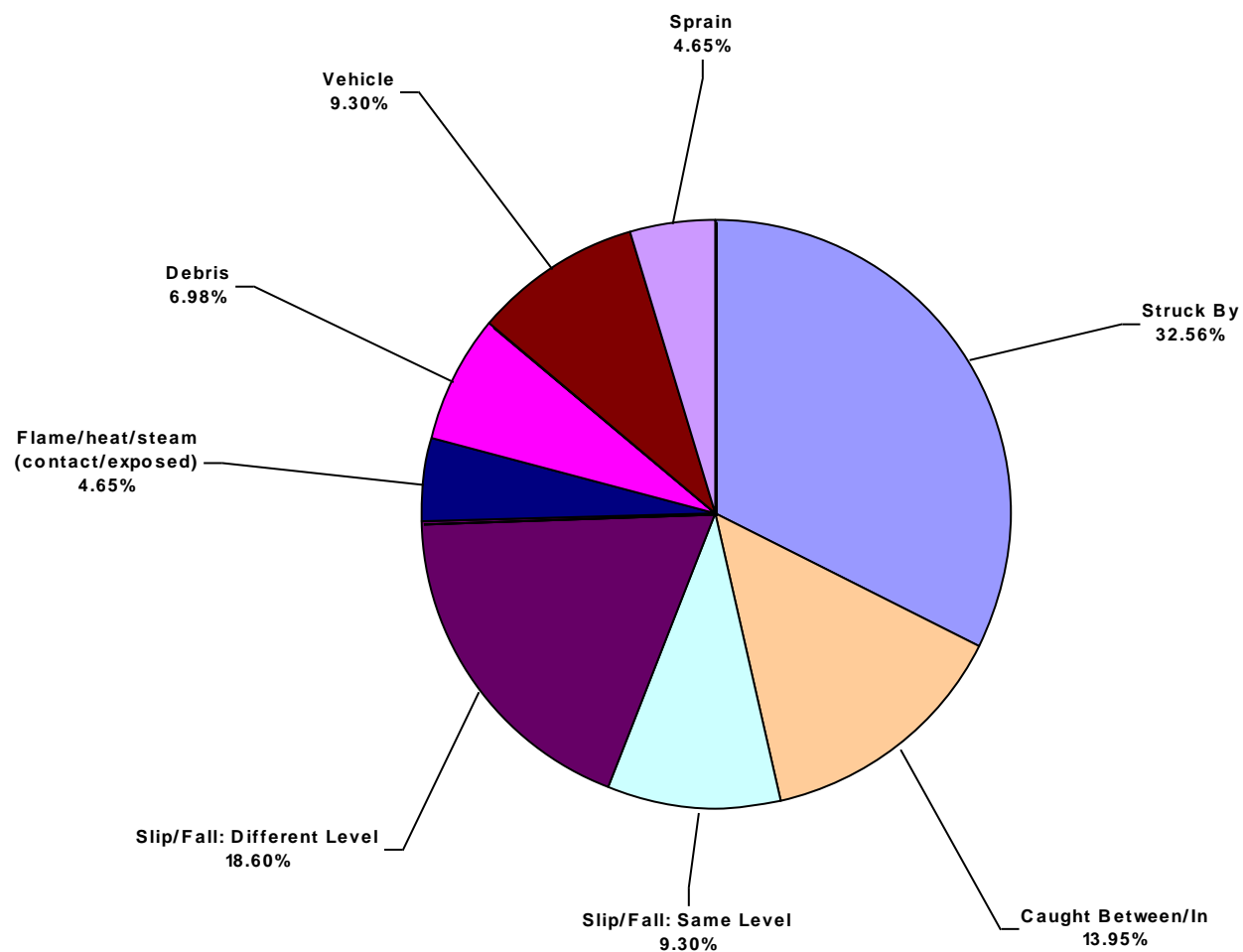
European Land Total Lost Time Incidents by Body Part (Chart 5)
Based on 43 Incidents



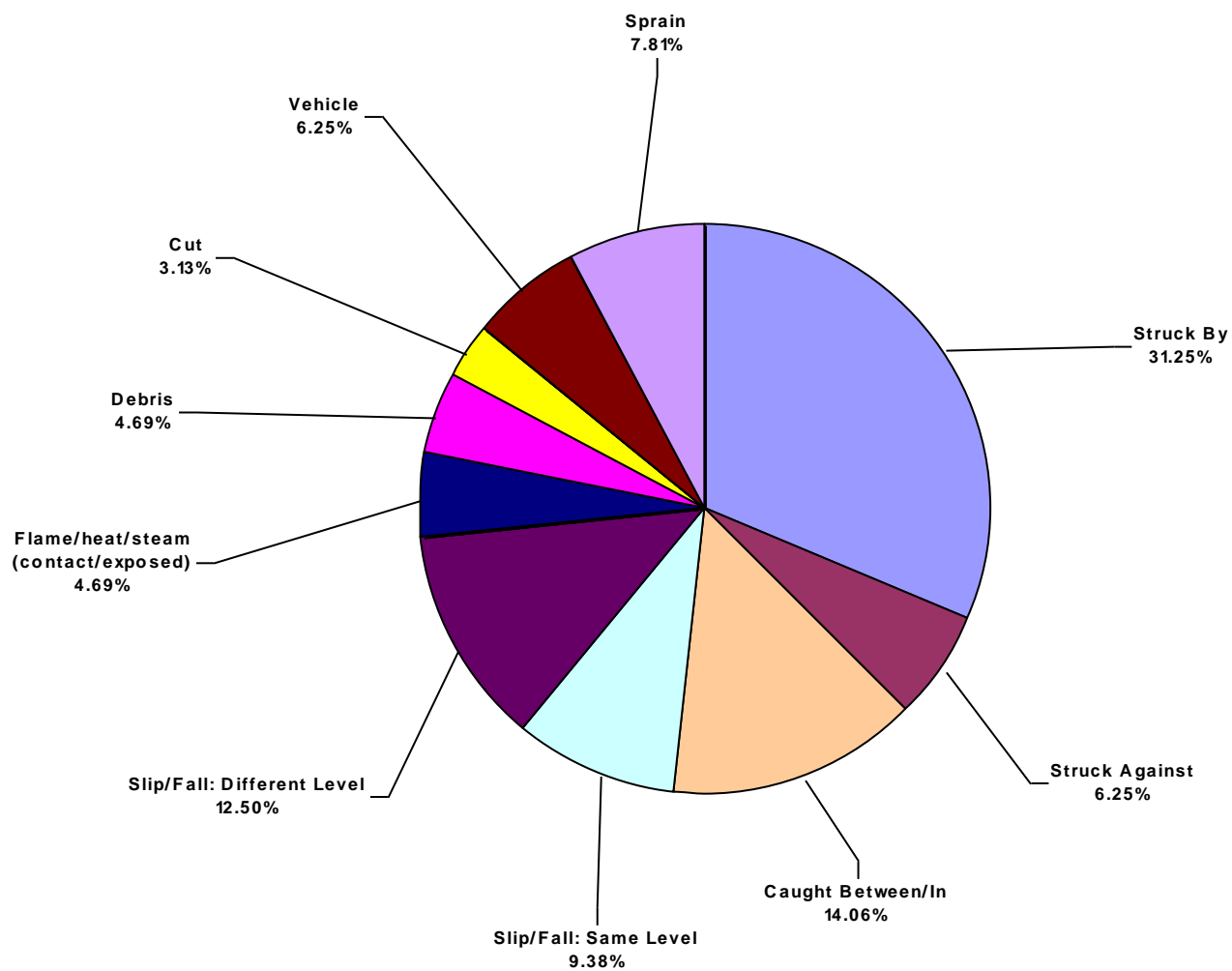
European Land Total Recordable Incidents by Body Part (Chart 6)
Based on 64 Incidents



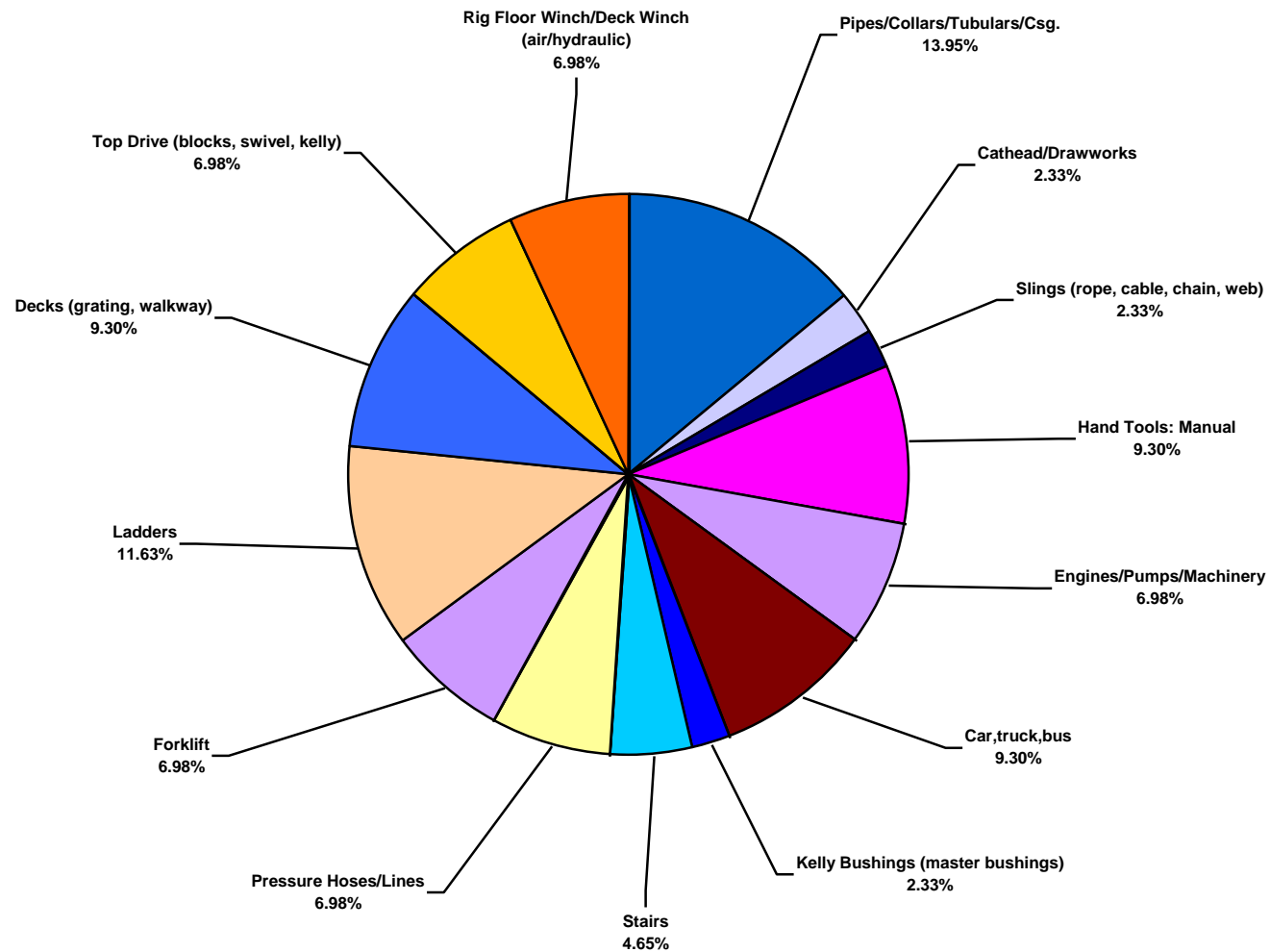
European Land Total Lost Time Incidents by Incident Type (Chart 7)
Based on 43 Incidents



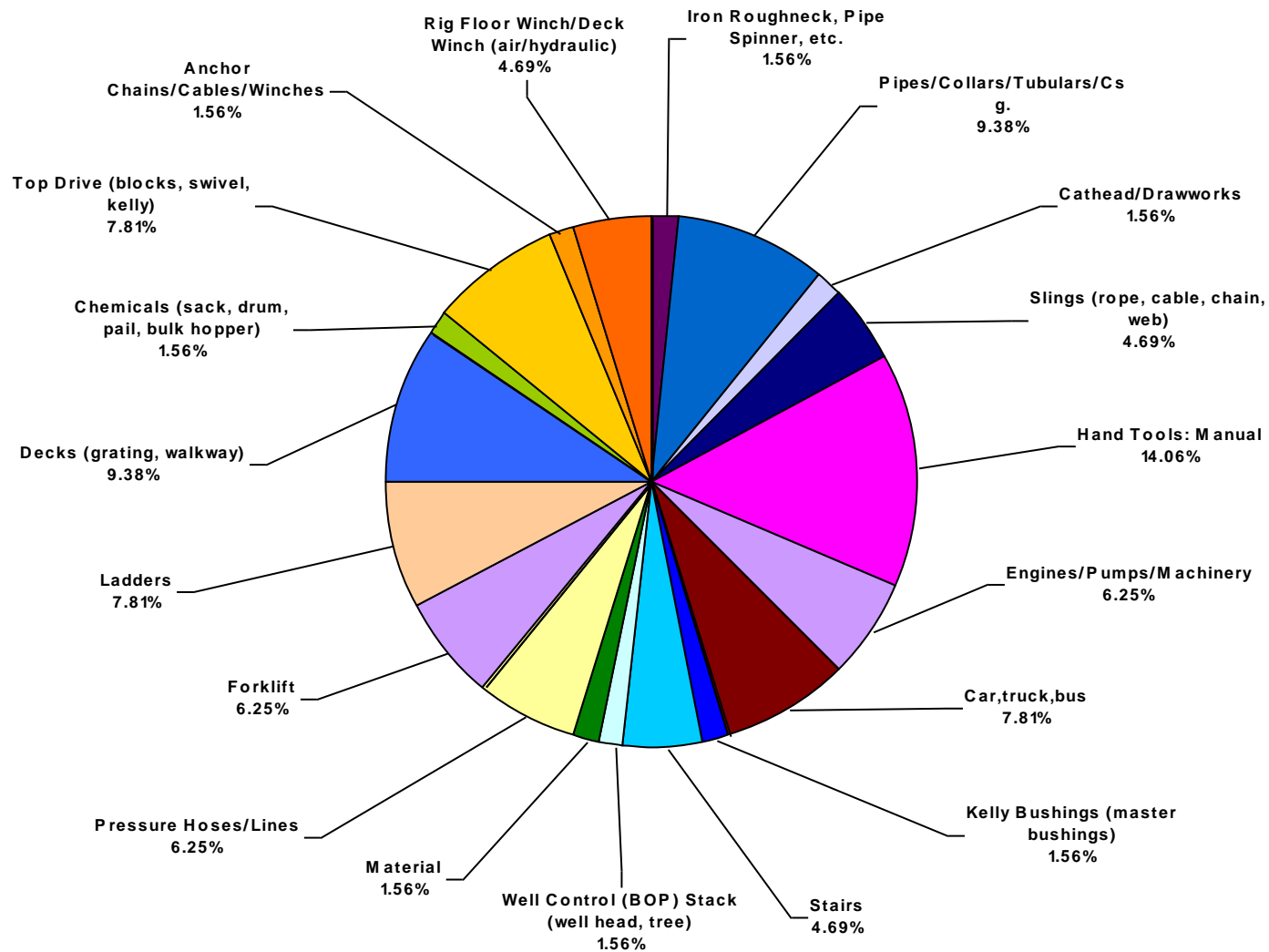
European Land Total Recordable Incidents by Incident Type (Chart 8)
Based on 64 Incidents



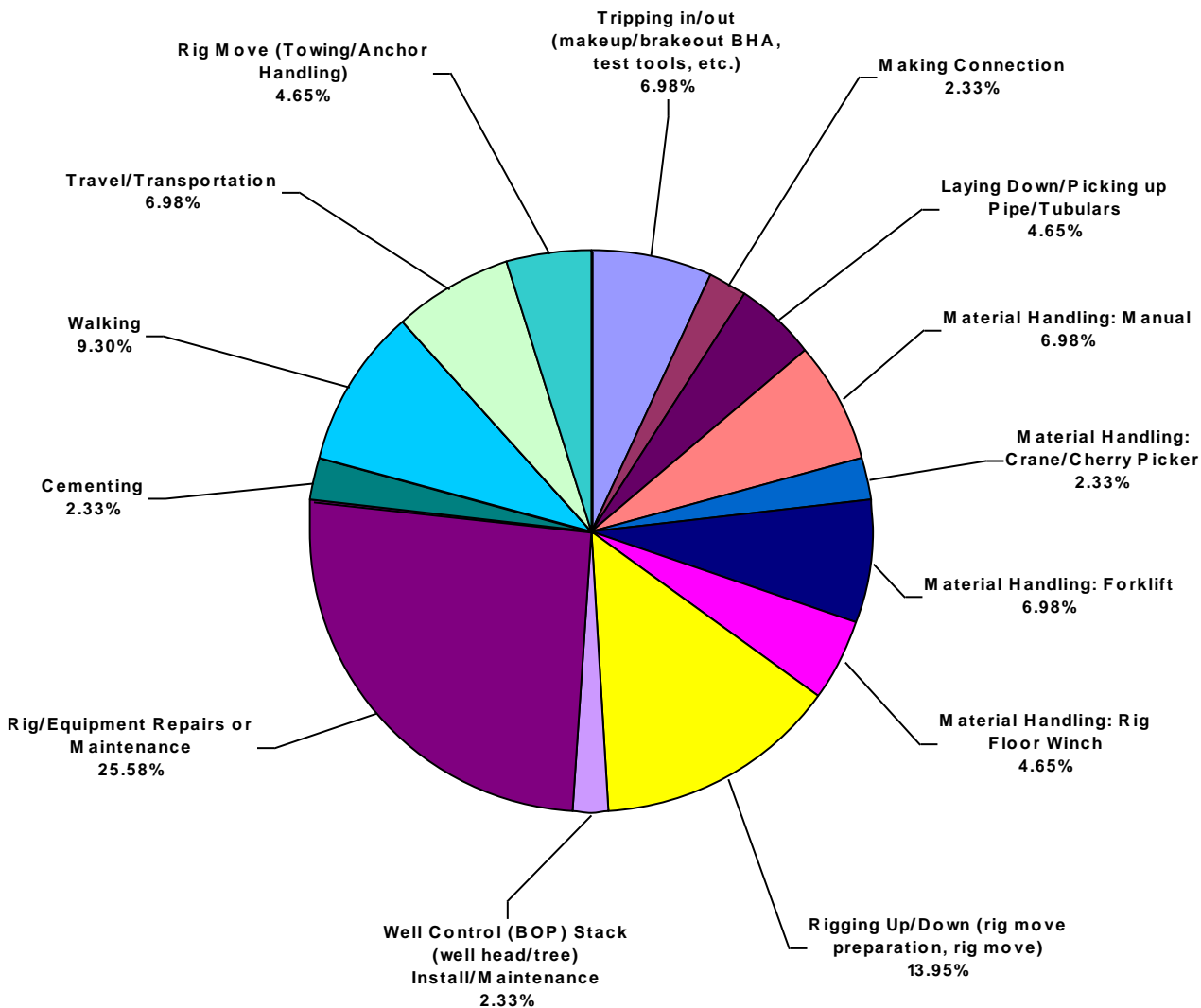
European Land Total Lost Time Incidents by Equipment (Chart 9)
Based on 43 Incidents



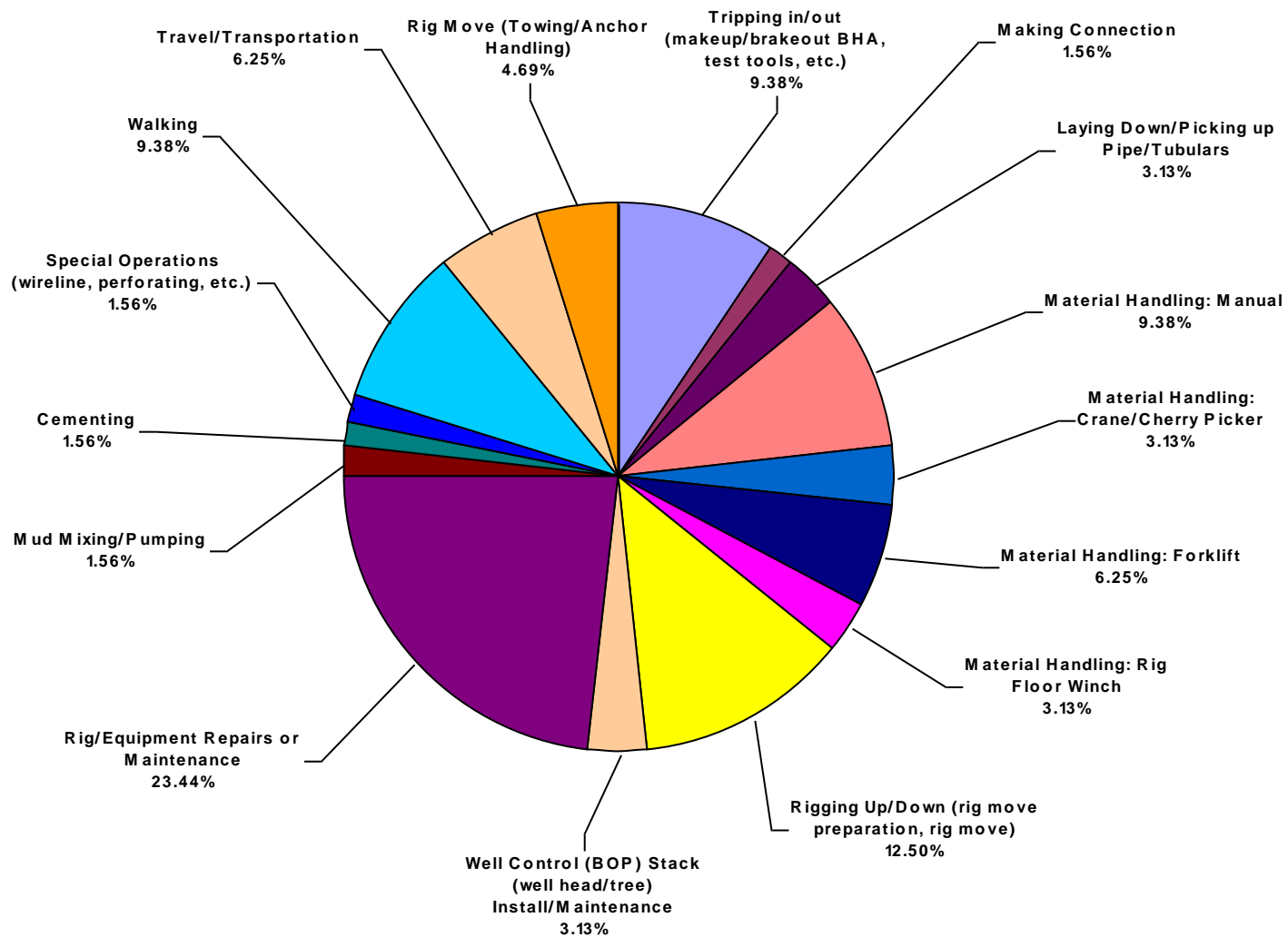
European Land Total Recordable Incidents by Equipment (Chart 10)
Based on 64 Incidents



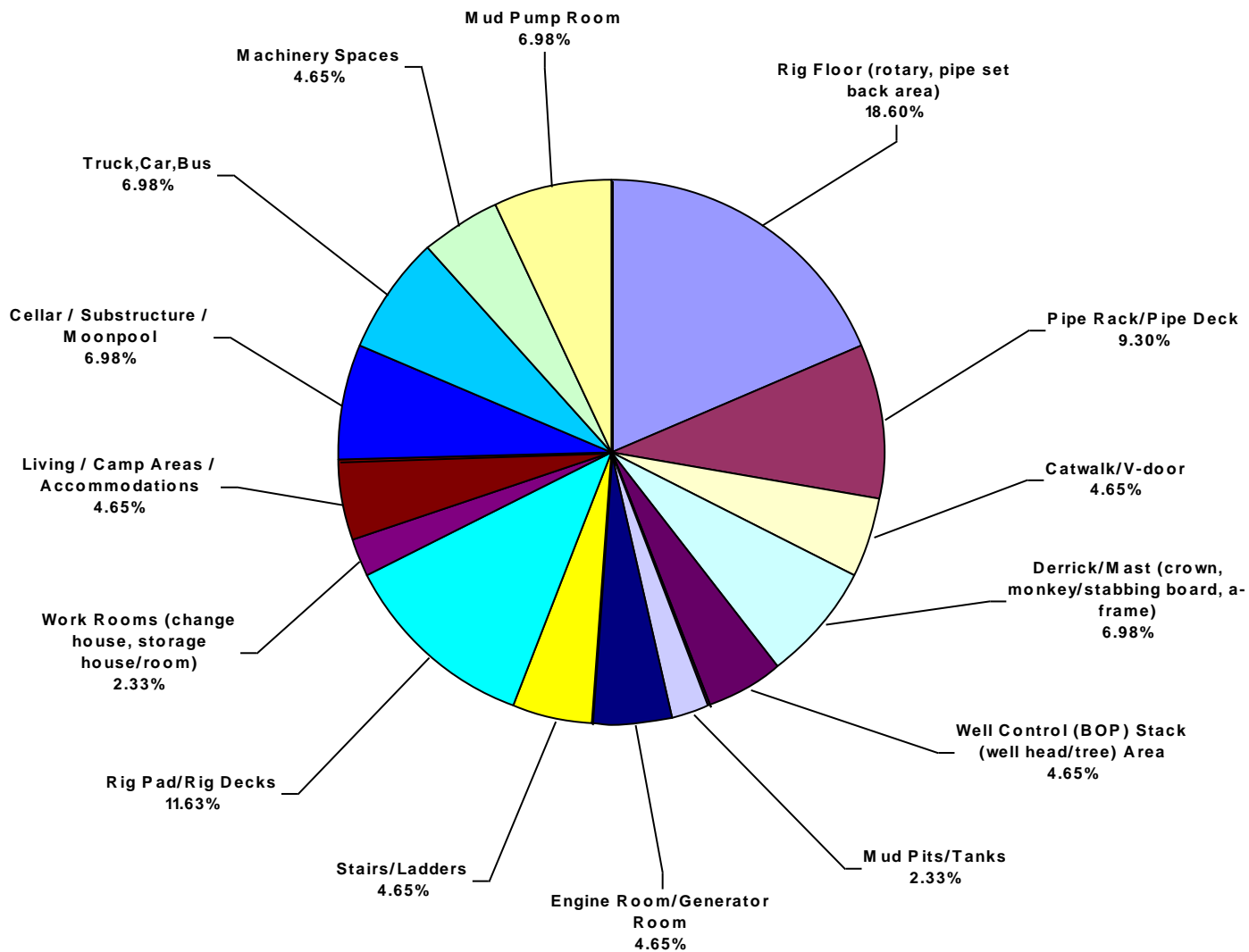
European Land Total Lost Time Incidents by Operation (Chart 11)
Based on 43 Incidents



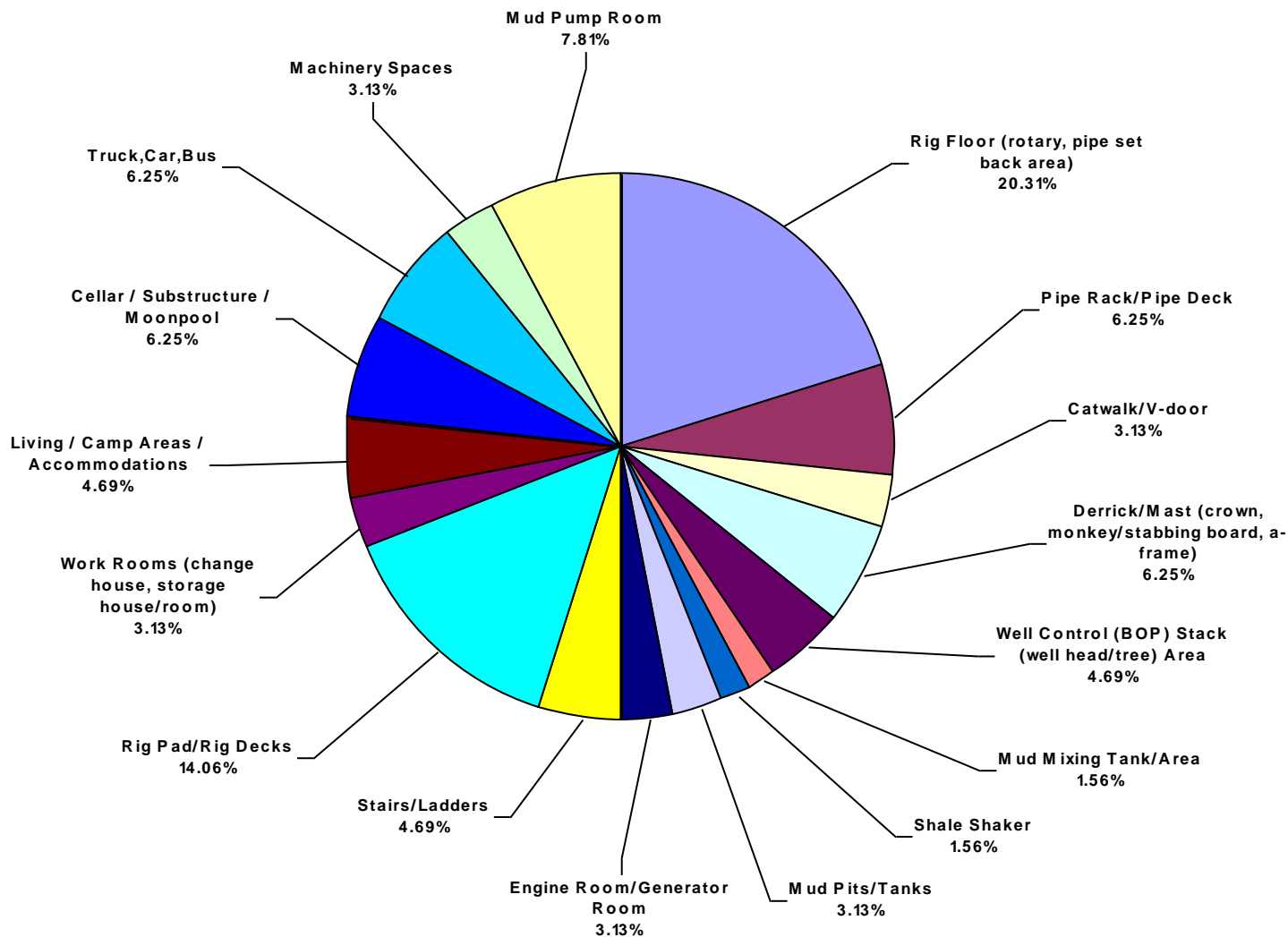
European Land Total Recordable Incidents by Operation (Chart 12)
Based on 64 Incidents



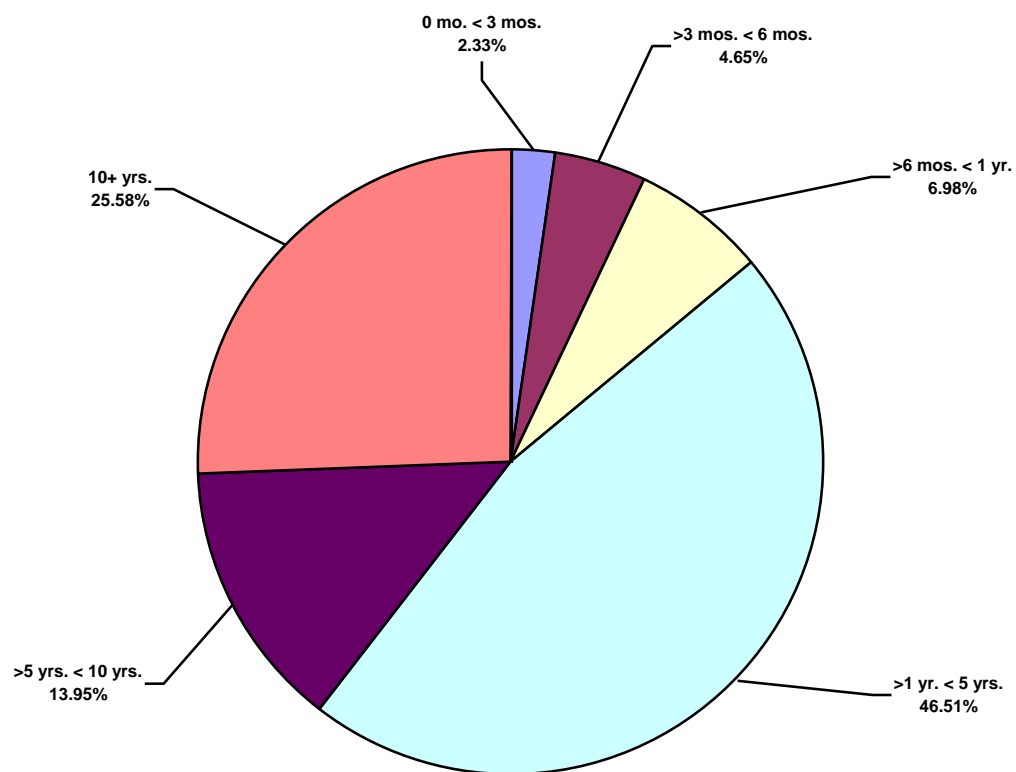
European Land Total Lost Time Incidents by Location (Chart 13)
Based on 43 Incidents



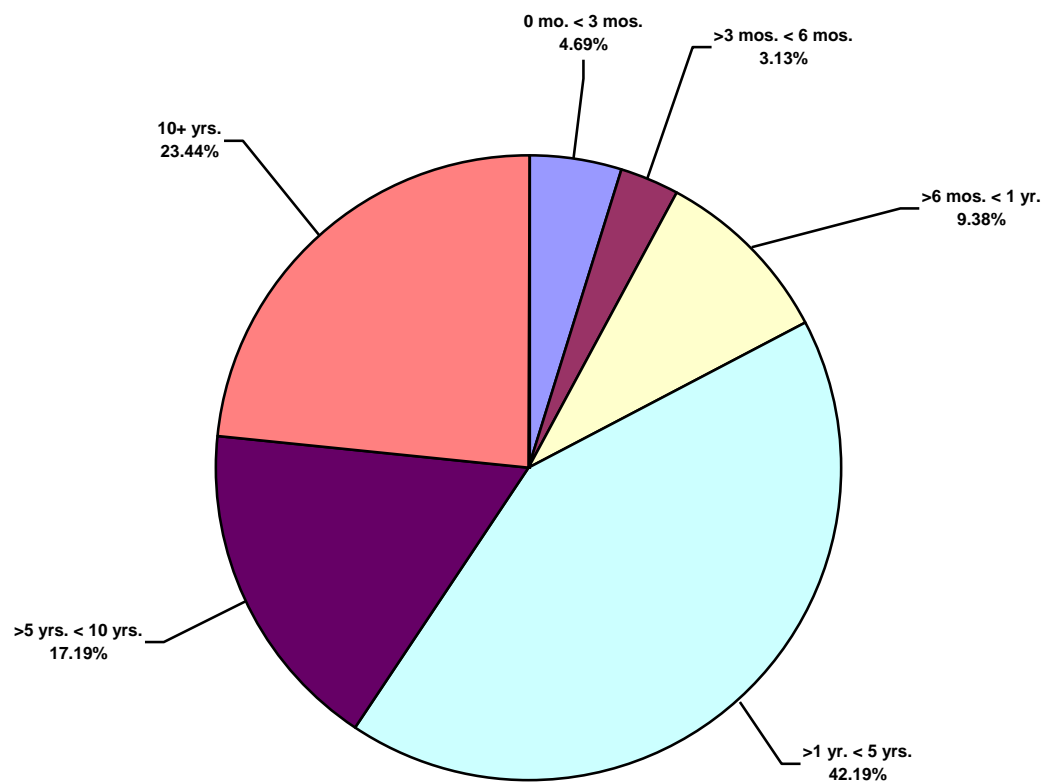
European Land Total Recordable Incidents by Location (Chart 14)
Based on 64 Incidents



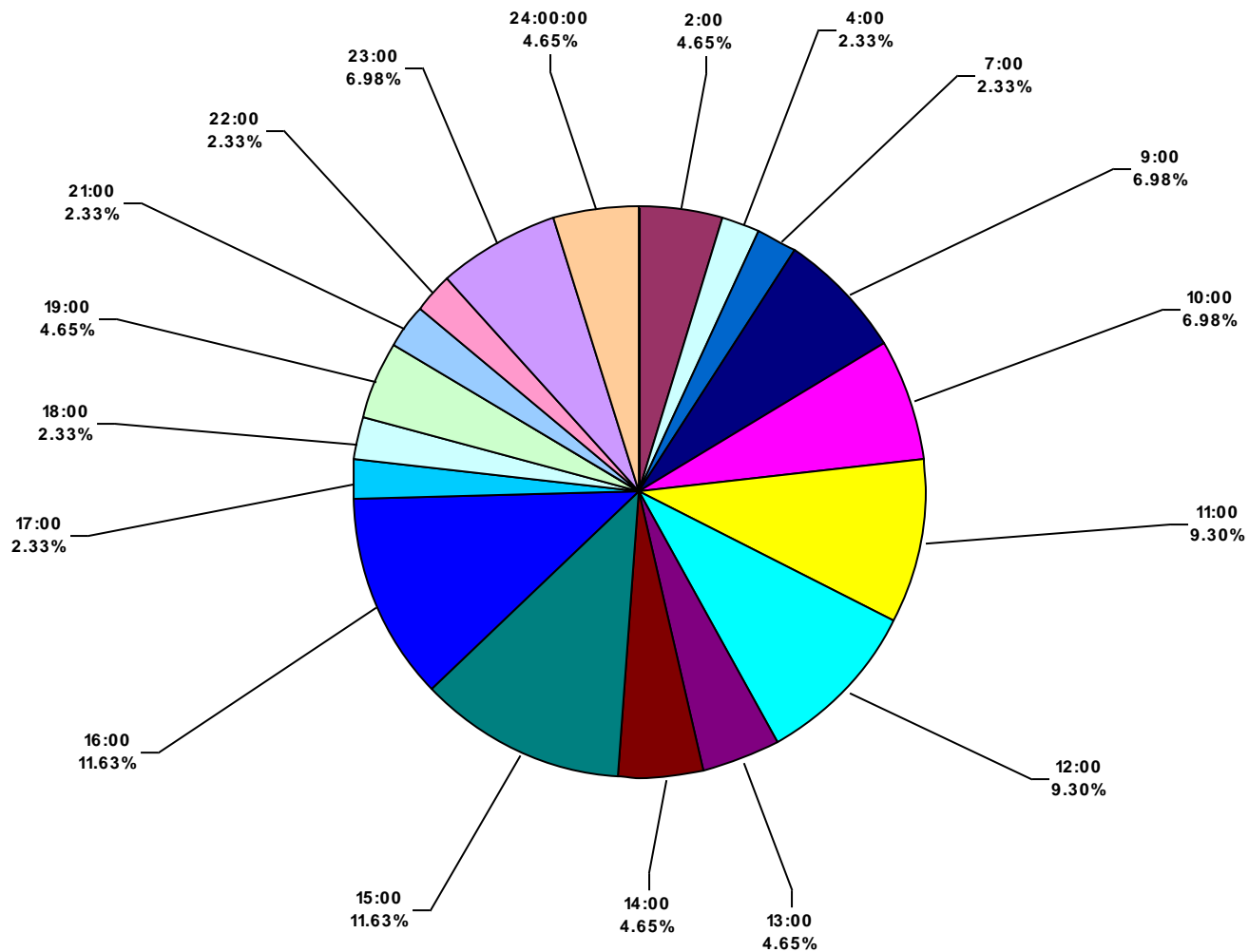
European Land Total Lost Time Incidents by Time in Service (Chart 15)
Based on 43 Incidents



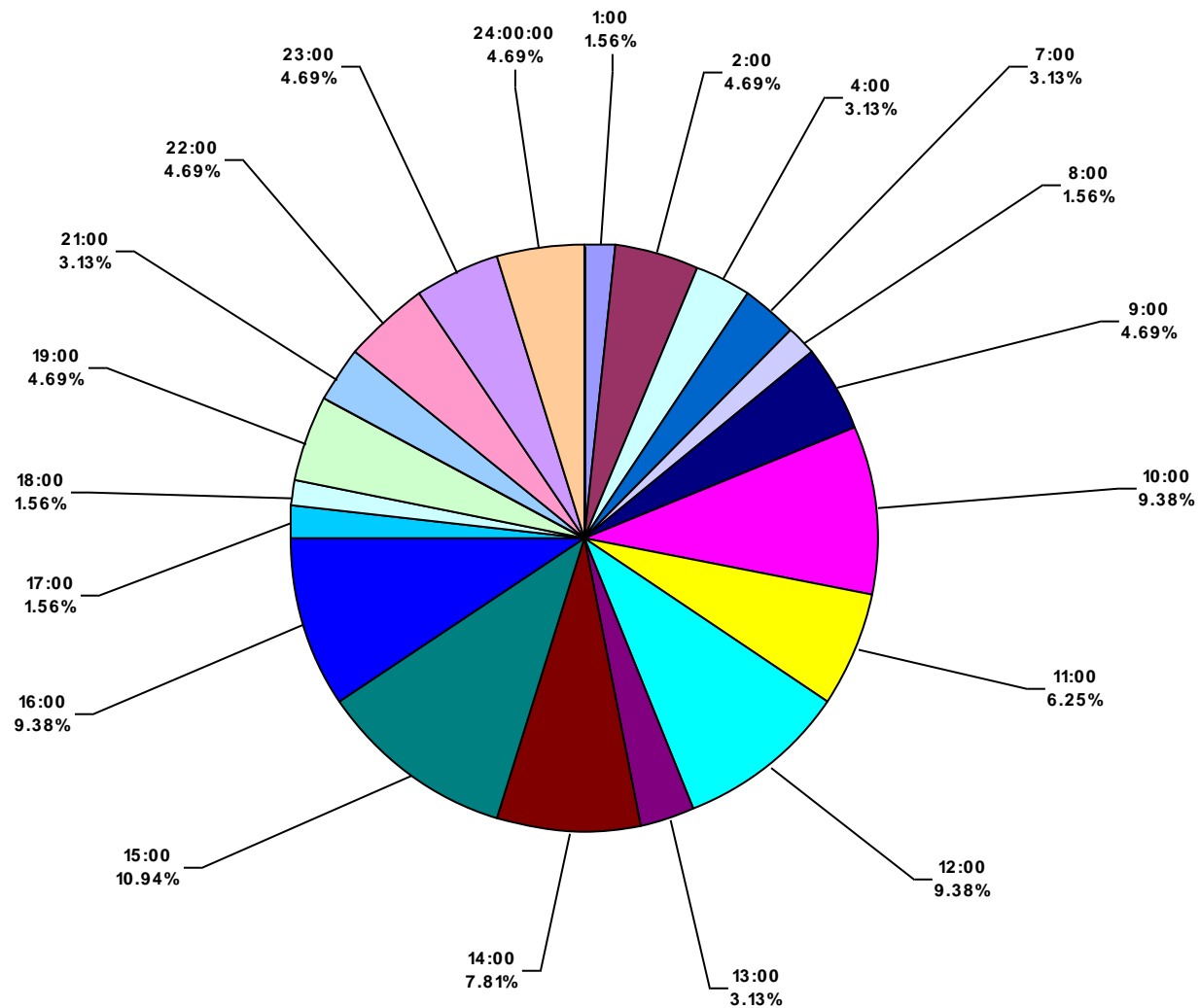
European Land Total Recordable Incidents by Time in Service (Chart 16)
Based on 64 Incidents



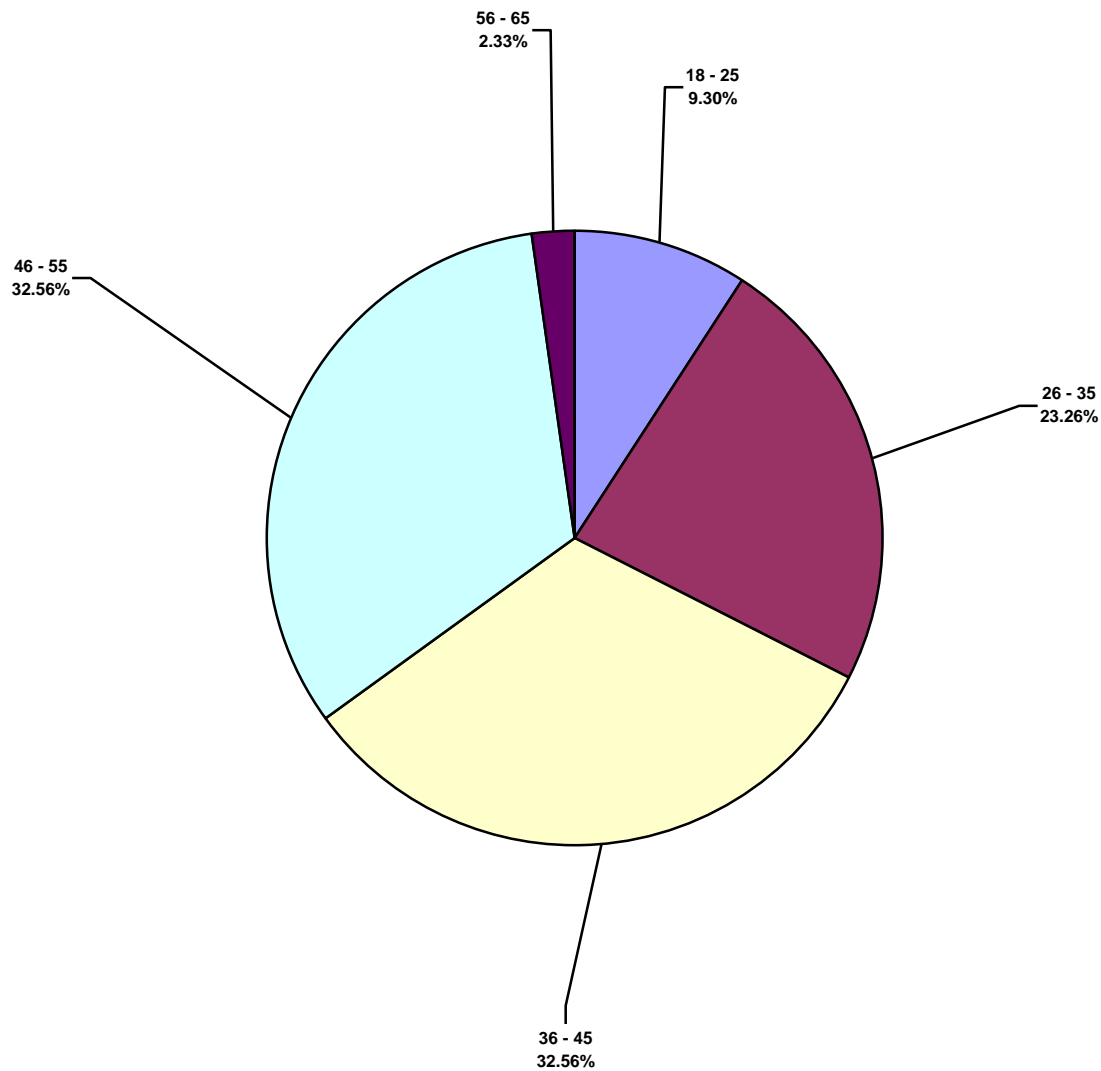
European Land Total Lost Time Incidents by Time of Day (Chart 17)
Based on 43 Incidents



European Land Total Recordable Incidents by Time of Day (Chart 18)
Based on 64 Incidents



European Land Total Lost Time Incidents by Age (Chart 19)
Based on 43 Incidents



European Land Total Recordable Incidents by Age (Chart 20)
Based on 64 Incidents

