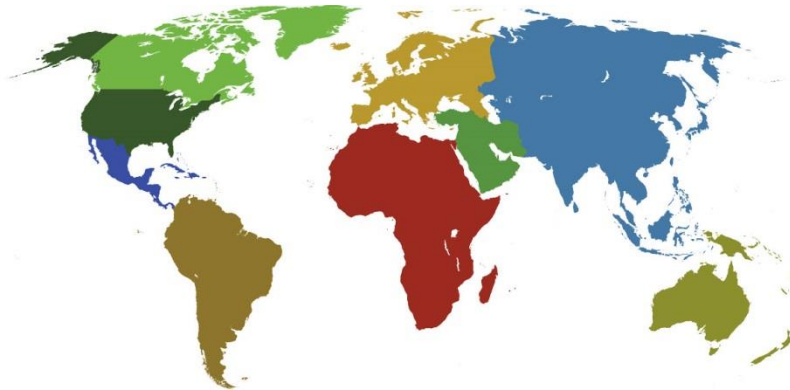




IADC
IADC
ISP PROGRAM

2017



**Summary of Occupational
Incidents**
(Asia Pacific Land Totals)

Issued 15 June 2018

Table of Contents

(Table of Contents is Hyperlinked, Just click on Topic & go)

IADC 2017 ASIA PACIFIC LAND TOTALS (TABLE 1)	1
<i>Asia Pacific Land Total Incidence Rates vs Man-hours (Figure 1)</i>	1
IADC 2017 ASIA PACIFIC LAND CHARTS	2
<i>Asia Pacific Land Total Recordable Incidents by Month (Chart 2)</i>	2
<i>Asia Pacific Land Total Recordable Incidents by Occupation (Chart 4)</i>	3
<i>Asia Pacific Land Total Recordable Incidents by Body Part (Chart 6)</i>	4
<i>Asia Pacific Land Total Recordable Incidents by Incident Type (Chart 8)</i>	5
<i>Asia Pacific Land Total Recordable Incidents by Equipment (Chart 10)</i>	6
<i>Asia Pacific Land Total Recordable Incidents by Operation (Chart 12)</i>	7
<i>Asia Pacific Land Total Recordable Incidents by Location (Chart 14)</i>	8
<i>Asia Pacific Land Total Recordable Incidents by Time in Service (Chart 16)</i>	9
<i>Asia Pacific Land Total Recordable Incidents by Time of Day (Chart 18)</i>	10
<i>Asia Pacific Land Total Recordable Incidents by Age (Chart 20)</i>	11

IADC 2017 Asia Pacific Land Totals (Table 1)

	<u>Total</u>
Total Man-hours	10,325,025
Total Medical Treatment Incidents	4
Total Restricted Work Incidents	2
Total Lost Time Incidents	1
Total Fatalities	0
Total Recordables	7
MTO Incidence Rate	0.08
RWC Incidence Rate	0.04
LTI Incidence Rate	0.02
LTI Frequency Rate	0.10
DART Incidence Rate	0.06
DART Frequency Rate	0.29
Recordable Incidence Rate	0.14
Recordable Frequency Rate	0.68

Companies Reporting: Land – 10

Medical Treatment Incidence Rate = MTOs X 200,000

Restricted Work Incidence Rate = RWCs X 200,000

Lost Time Incidence Rate = LTIs + FTLs X 200,000

DART Incidence Rate = LTIs + RWC X 200,000

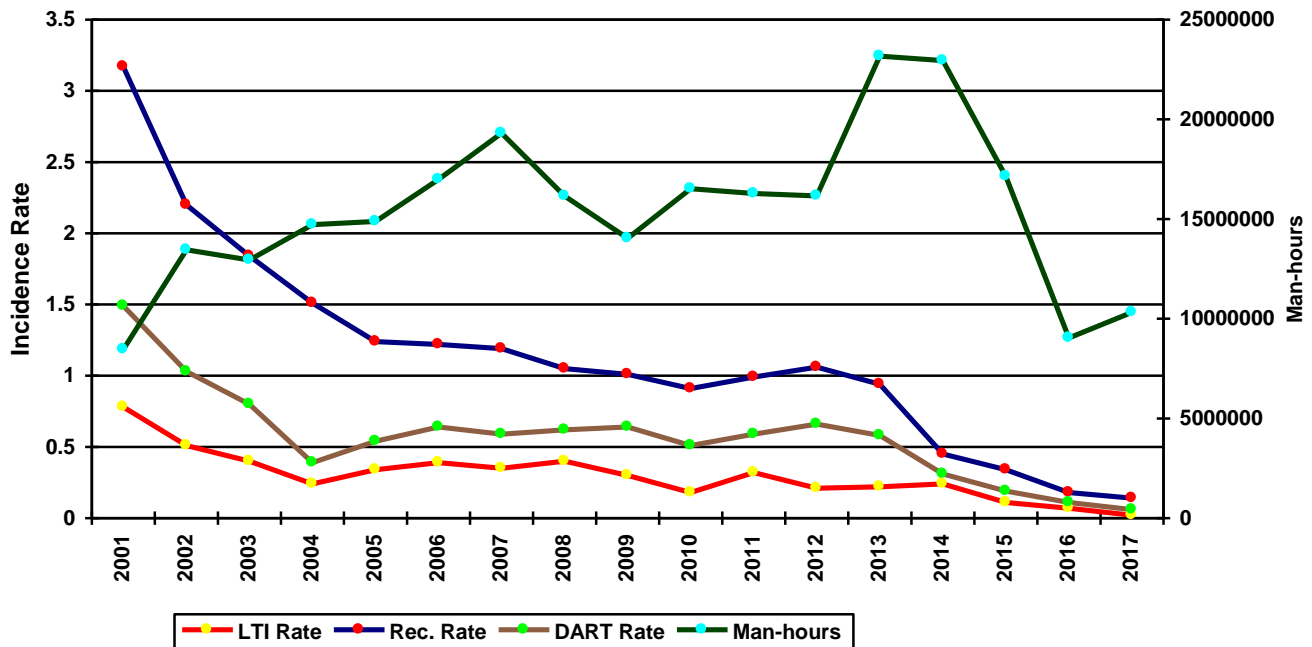
Recordable Incidence Rate = RCRD X 200,000

Lost Time Frequency Rate = LTIs + FTLs X 1,000,000

DART Frequency Rate = LTIs + RWC X 1,000,000

Recordable Frequency Rate = RCRD X 1,000,000

Asia Pacific Land Total Incidence Rates vs Man-hours (Figure 1)

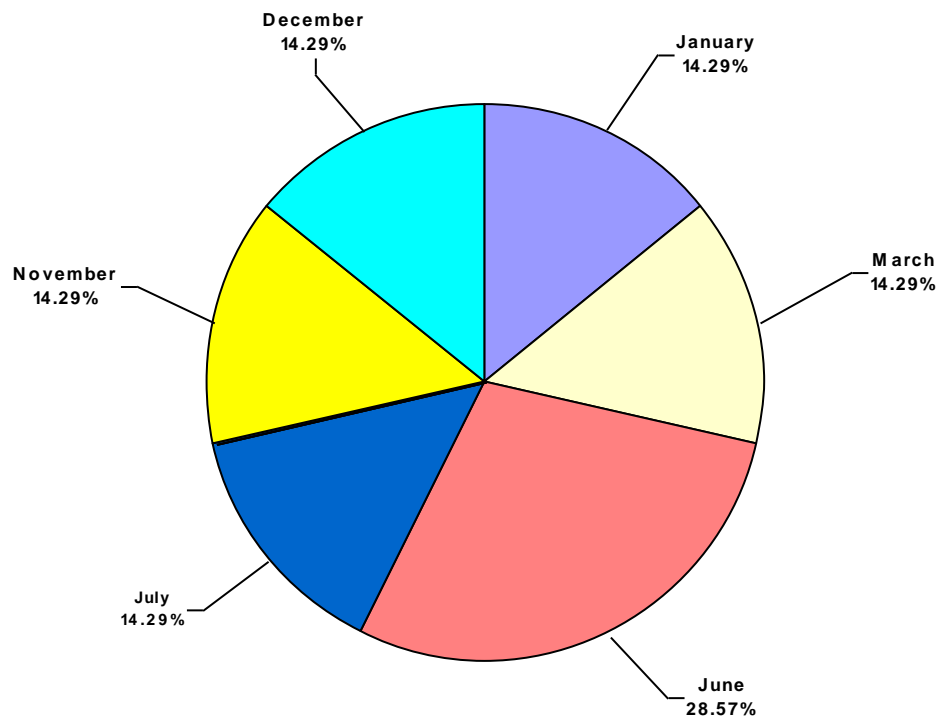


IADC 2017 Asia Pacific Land Charts

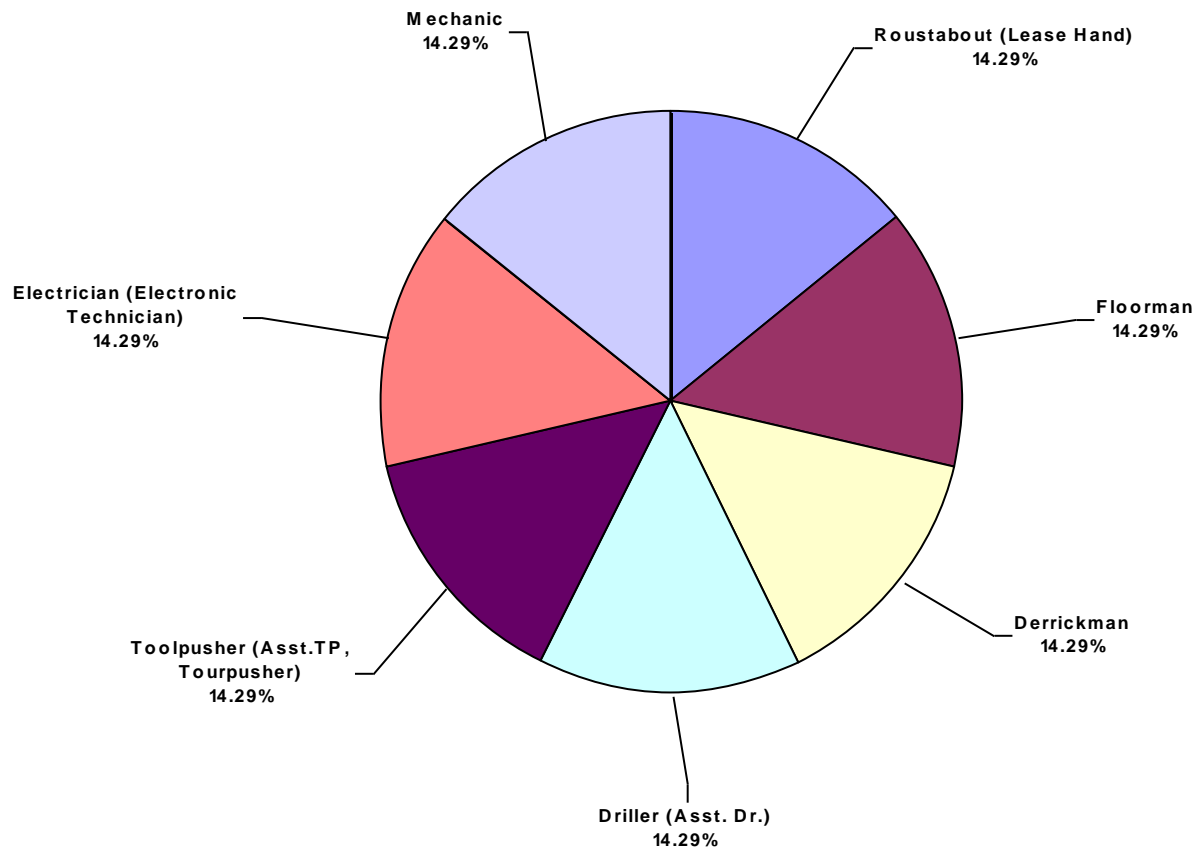
Note: There was only one Lost Time Incident recorded for 2017, therefore there will not be any charts.

Asia Pacific Land Total Recordable Incidents by Month (Chart 2)

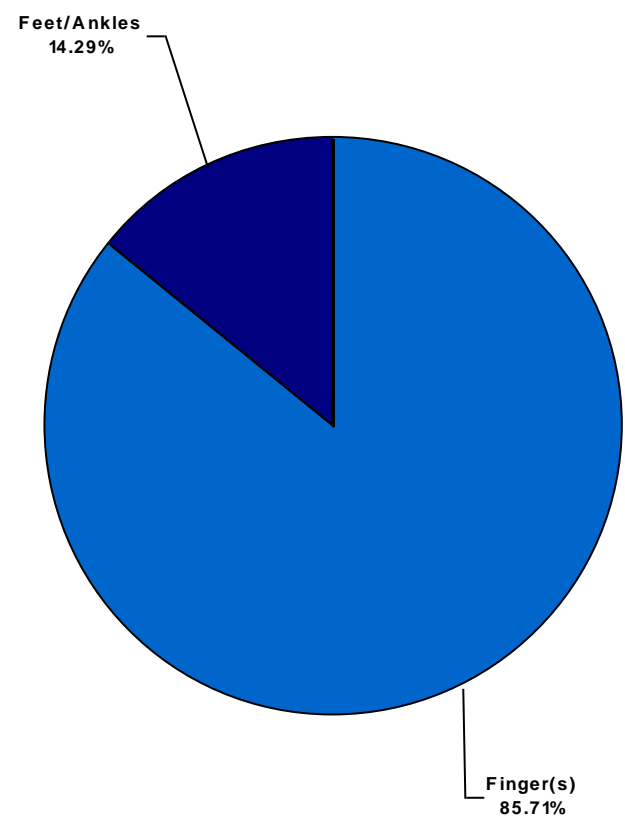
Based on 7 Incidents



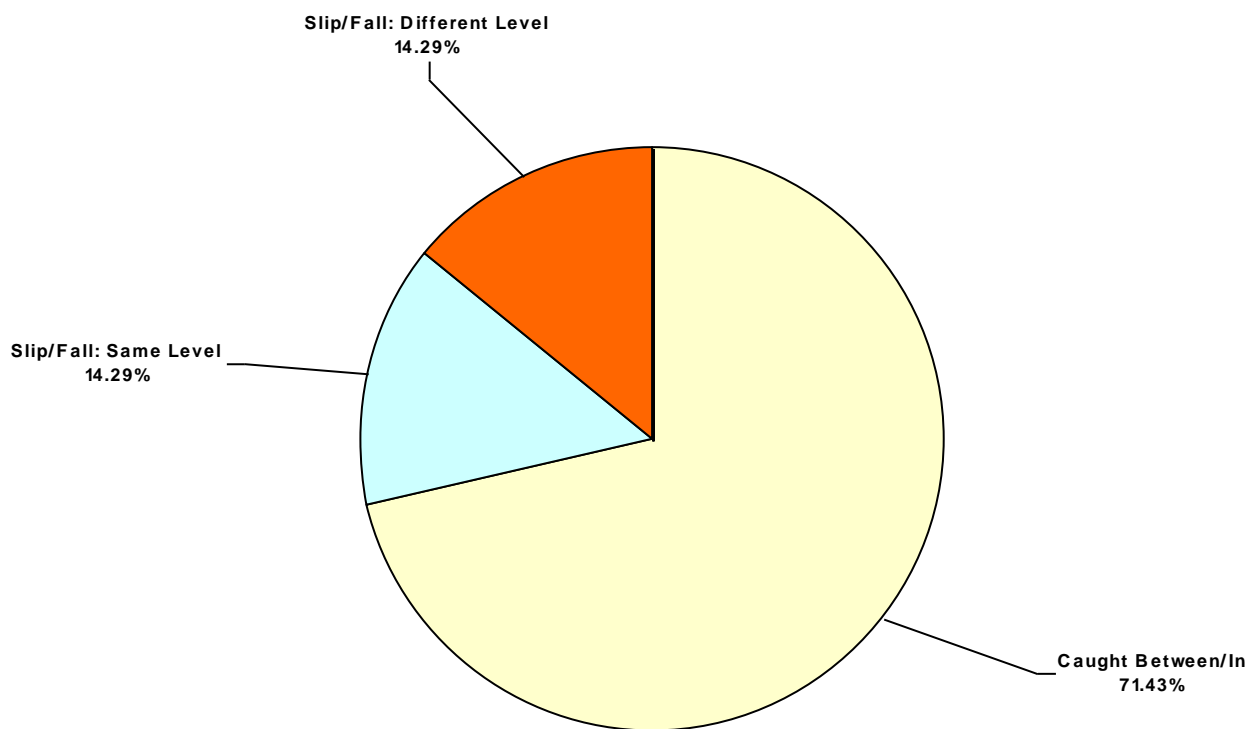
Asia Pacific Land Total Recordable Incidents by Occupation (Chart 4)
Based on 7 Incidents



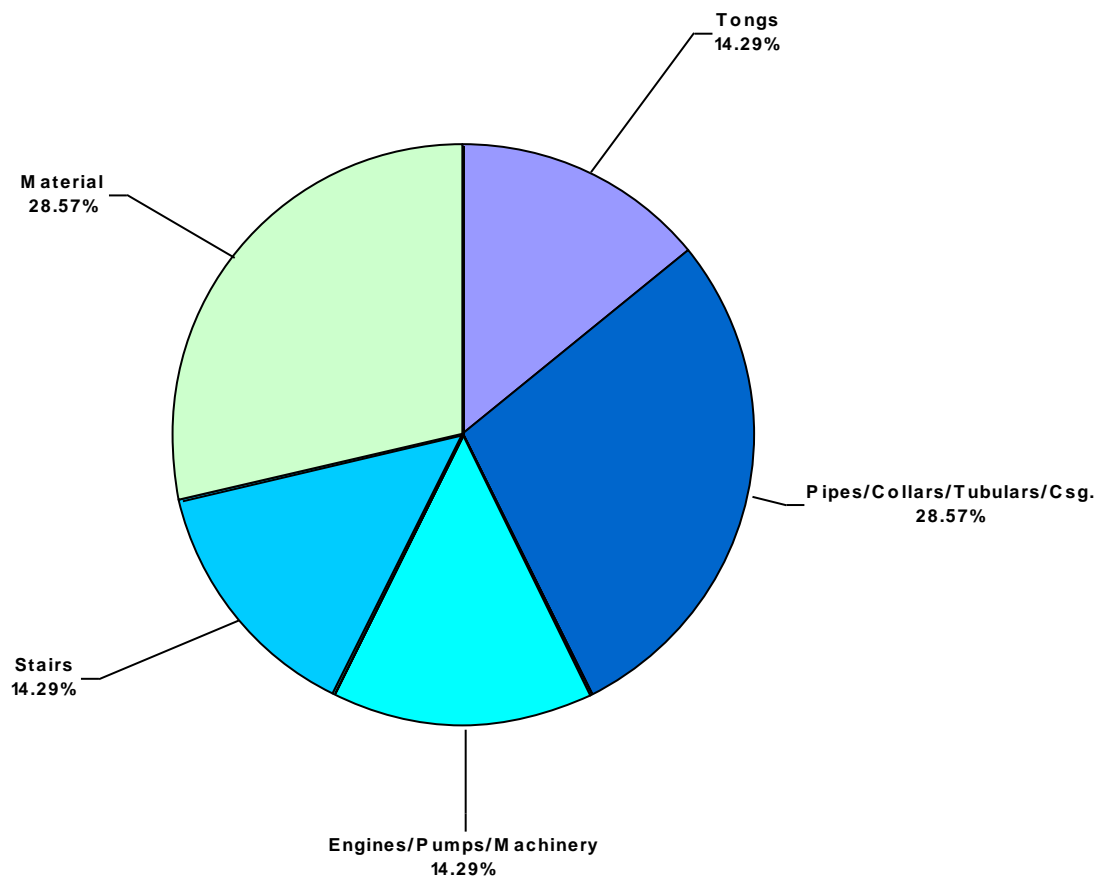
Asia Pacific Land Total Recordable Incidents by Body Part (Chart 6)
Based on 7 Incidents



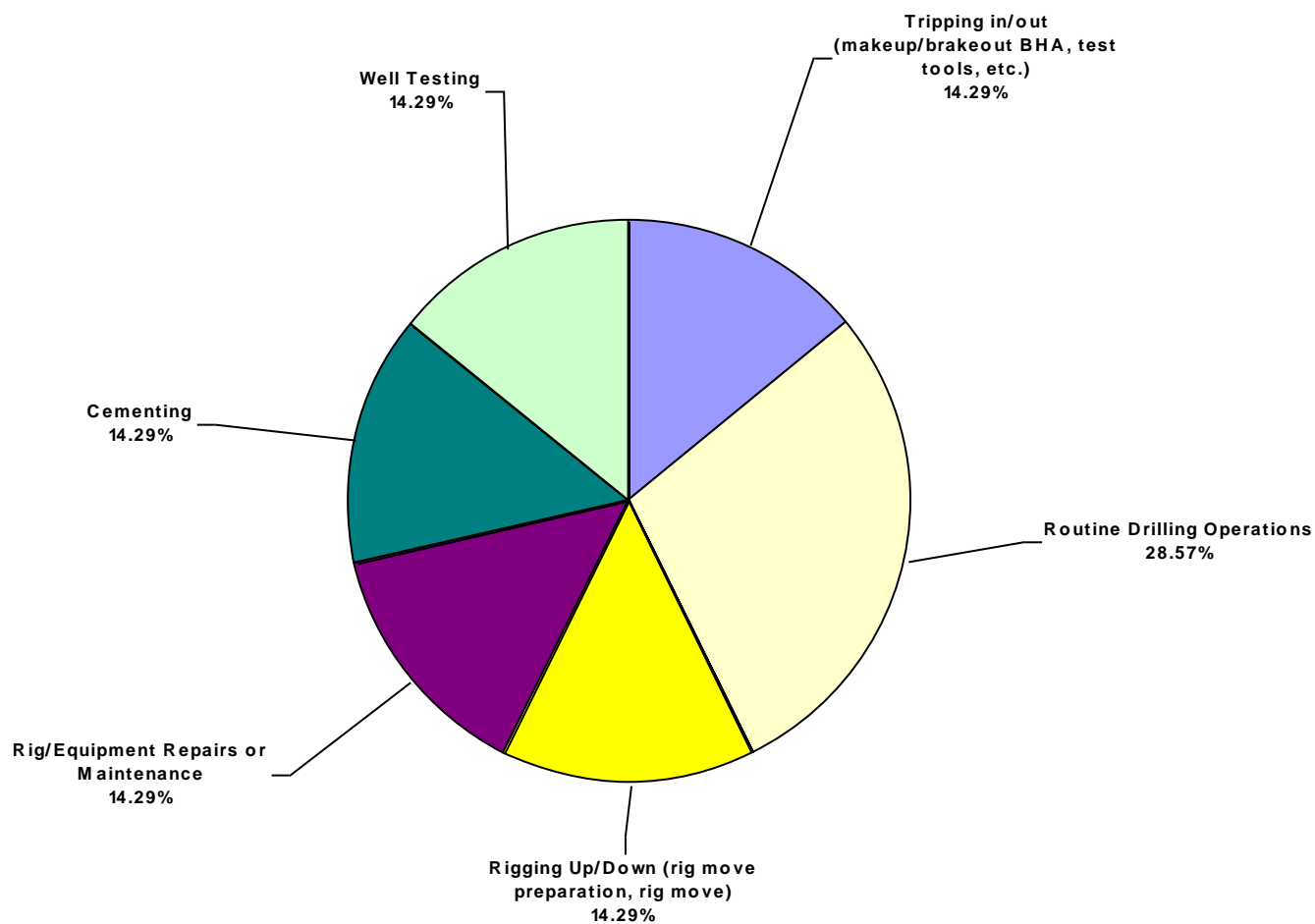
Asia Pacific Land Total Recordable Incidents by Incident Type (Chart 8)
Based on 7 Incidents



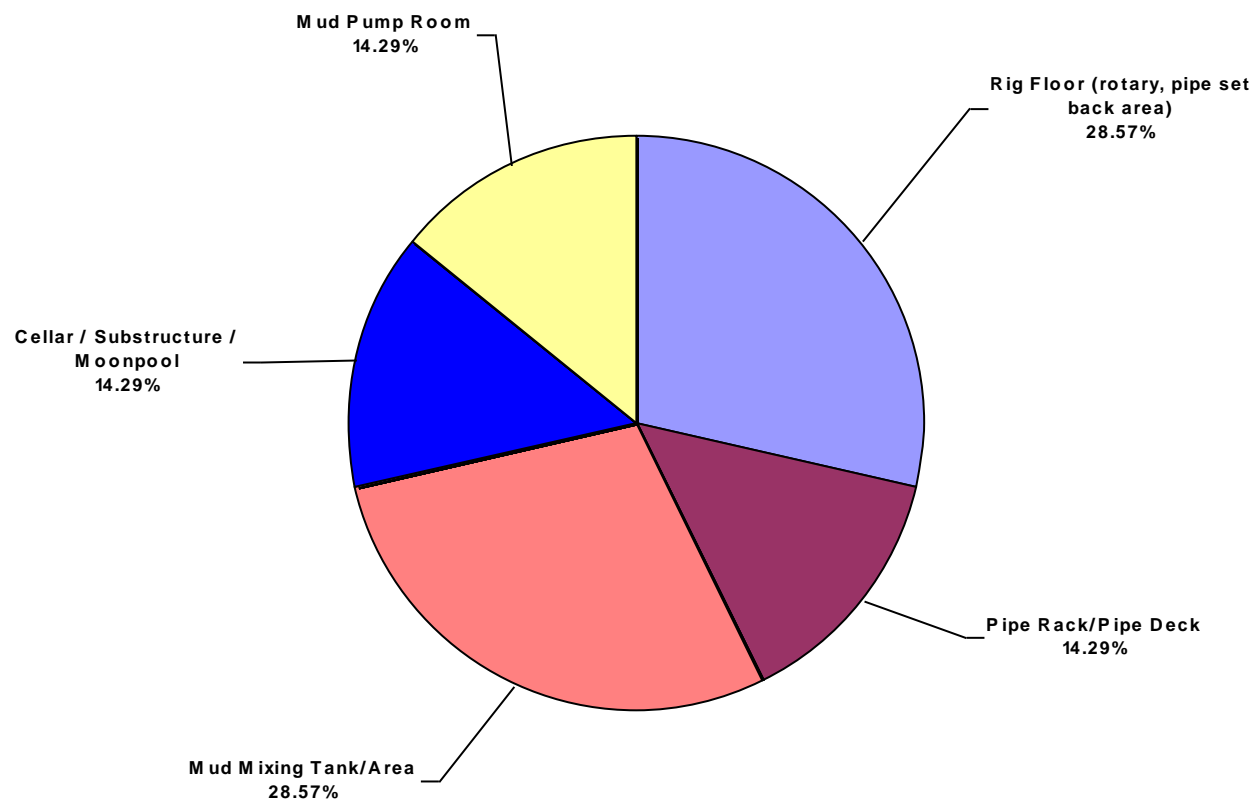
Asia Pacific Land Total Recordable Incidents by Equipment (Chart 10)
Based on 7 Incidents



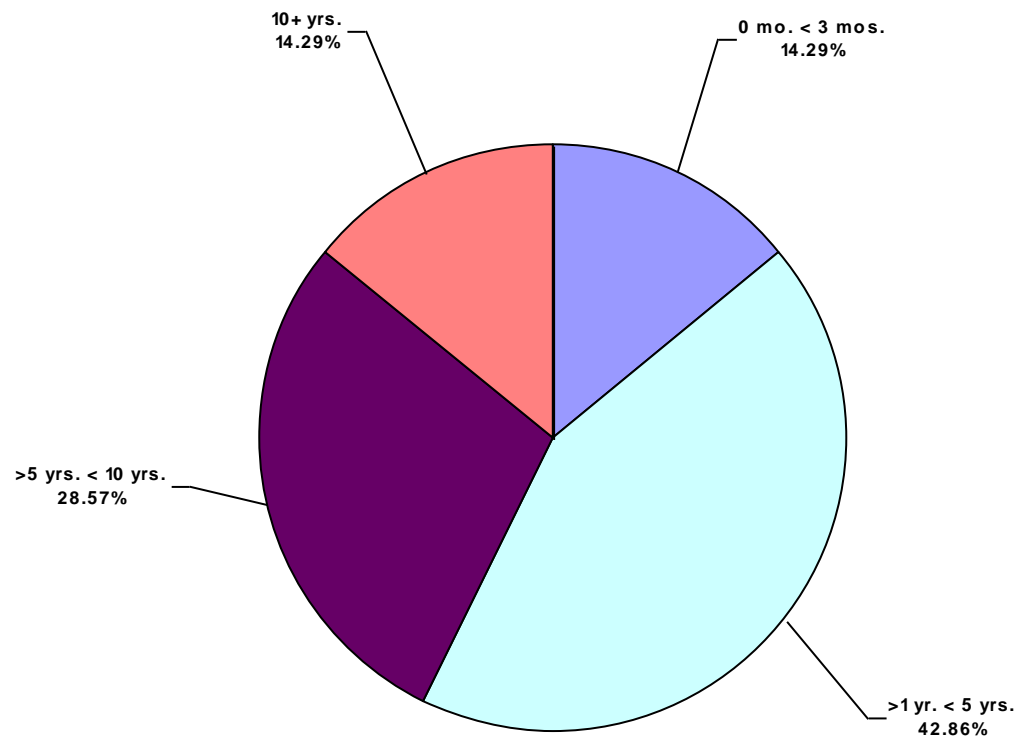
Asia Pacific Land Total Recordable Incidents by Operation (Chart 12)
Based on 7 Incidents



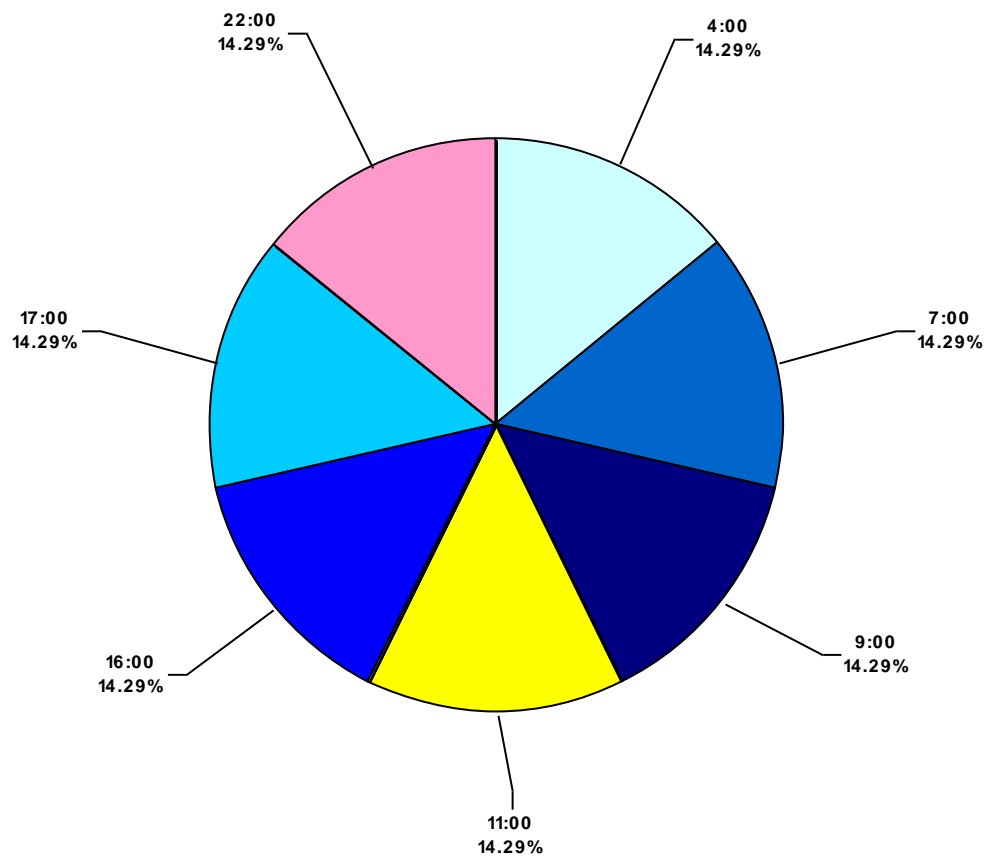
Asia Pacific Land Total Recordable Incidents by Location (Chart 14)
Based on 7 Incidents



Asia Pacific Land Total Recordable Incidents by Time in Service (Chart 16)
Based on 7 Incidents



Asia Pacific Land Total Recordable Incidents by Time of Day (Chart 18)
Based on 7 Incidents



Asia Pacific Land Total Recordable Incidents by Age (Chart 20)
Based on 7 Incidents

