



IADC

**IADC
ISP PROGRAM**

2017



**Summary of Occupational
Incidents
(South America Water Totals)**

Issued 15 June 2018

Table of Contents

(Table of Contents is Hyperlinked, Just click on Topic & go)

IADC 2017 SOUTH AMERICA WATER TOTALS (TABLE 1).....	1
<i>South America Water Total Incidence Rates vs Man-hours (Figure 1).....</i>	<i>1</i>
IADC 2017 SOUTH AMERICA WATER CHARTS	2
<i>South America Water Total Lost Time Incidents by Month (Chart 1).....</i>	<i>2</i>
<i>South America Water Total Recordable Incidents by Month (Chart 2)</i>	<i>3</i>
<i>South America Water Total Lost Time Incidents by Occupation (Chart 3).....</i>	<i>4</i>
<i>South America Water Total Recordable Incidents by Occupation (Chart 4).....</i>	<i>5</i>
<i>South America Water Total Lost Time Incidents by Body Part (Chart 5).....</i>	<i>6</i>
<i>South America Water Total Recordable Incidents by Body Part (Chart 6)</i>	<i>7</i>
<i>South America Water Total Lost Time Incidents by Incident Type (Chart 7)</i>	<i>8</i>
<i>South America Water Total Recordable Incidents by Incident Type (Chart 8).....</i>	<i>9</i>
<i>South America Water Total Lost Time Incidents by Equipment (Chart 9).....</i>	<i>10</i>
<i>South America Water Total Recordable Incidents by Equipment (Chart 10)</i>	<i>11</i>
<i>South America Water Total Lost Time Incidents by Operation (Chart 11).....</i>	<i>12</i>
<i>South America Water Total Recordable Incidents by Operation (Chart 12)</i>	<i>13</i>
<i>South America Water Total Lost Time Incidents by Location (Chart 13).....</i>	<i>14</i>
<i>South America Water Total Recordable Incidents by Location (Chart 14).....</i>	<i>15</i>
<i>South America Water Total Lost Time Incidents by Time in Service (Chart 15)</i>	<i>16</i>
<i>South America Water Total Recordable Incidents by Time in Service (Chart 16).....</i>	<i>17</i>
<i>South America Water Total Lost Time Incidents by Time of Day (Chart 17).....</i>	<i>18</i>
<i>South America Water Total Recordable Incidents by Time of Day (Chart 18).....</i>	<i>19</i>
<i>South America Water Total Lost Time Incidents by Age (Chart 19).....</i>	<i>20</i>
<i>South America Water Total Recordable Incidents by Age (Chart 20).....</i>	<i>21</i>

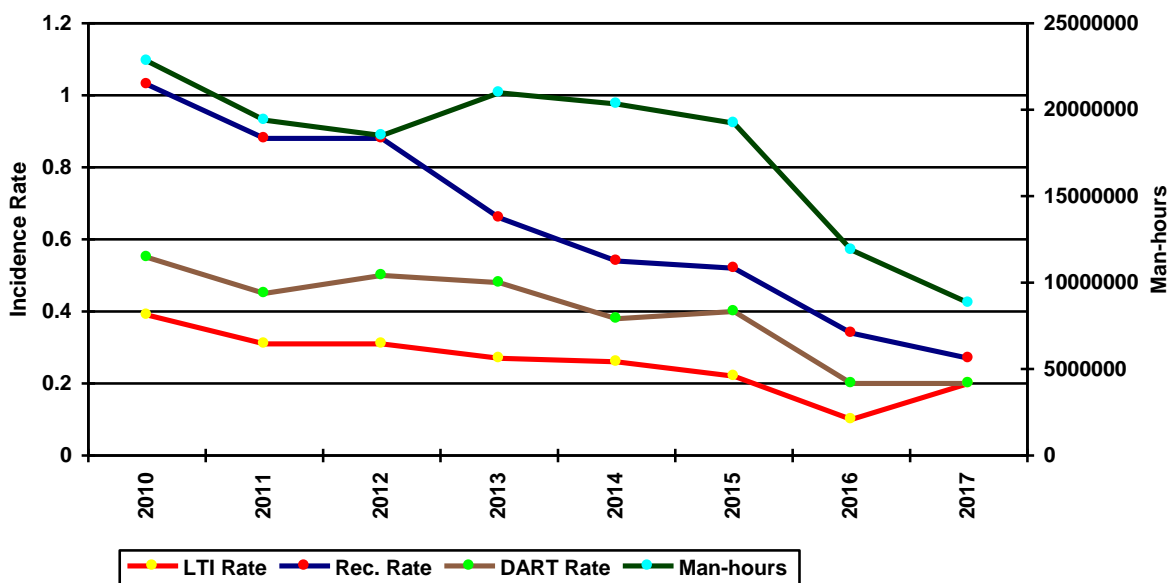
IADC 2017 South America Water Totals (Table 1)

	<u>Total</u>
Total Man-hours	8,824,098
Total Medical Treatment Incidents	3
Total Restricted Work Incidents	0
Total Lost Time Incidents	9
Total Fatalities	0
Total Recordables	12
MTO Incidence Rate	0.07
RWC Incidence Rate	0.00
LTI Incidence Rate	0.20
LTI Frequency Rate	1.02
DART Incidence Rate	0.20
DART Frequency Rate	1.02
Recordable Incidence Rate	0.27
Recordable Frequency Rate	1.36

Companies Reporting: Water – 11

Medical Treatment Incidence Rate = MTOs X 200,000
 Restricted Work Incidence Rate = RWCs X 200,000
 Lost Time Incidence Rate = LTIs + FTLs X 200,000
 DART Incidence Rate = LTIs + RWC X 200,000
 Recordable Incidence Rate = RCRD X 200,000
 Lost Time Frequency Rate = LTIs +FTLs X 1,000,000
 DART Frequency Rate = LTIs + RWC X 1,000,000
 Recordable Frequency Rate = RCRD X 1,000,000

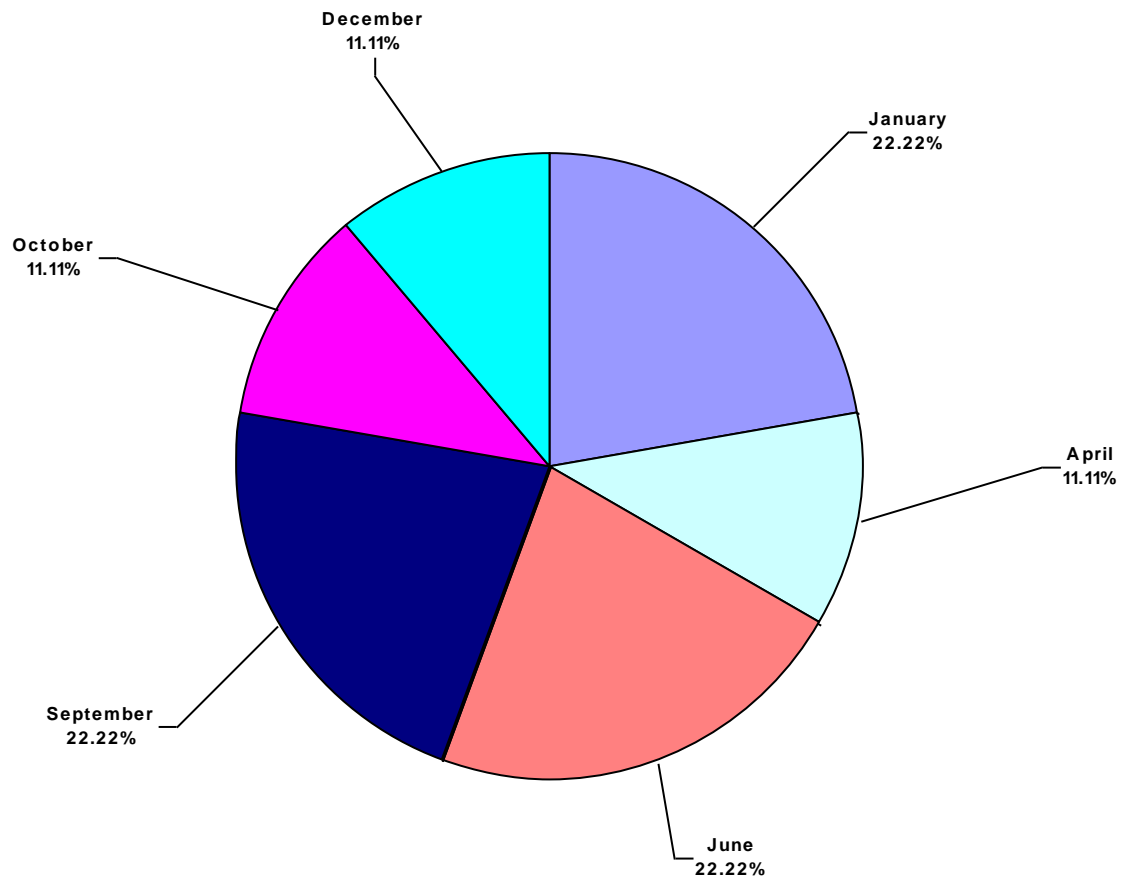
South America Water Total Incidence Rates vs Man-hours (Figure 1)



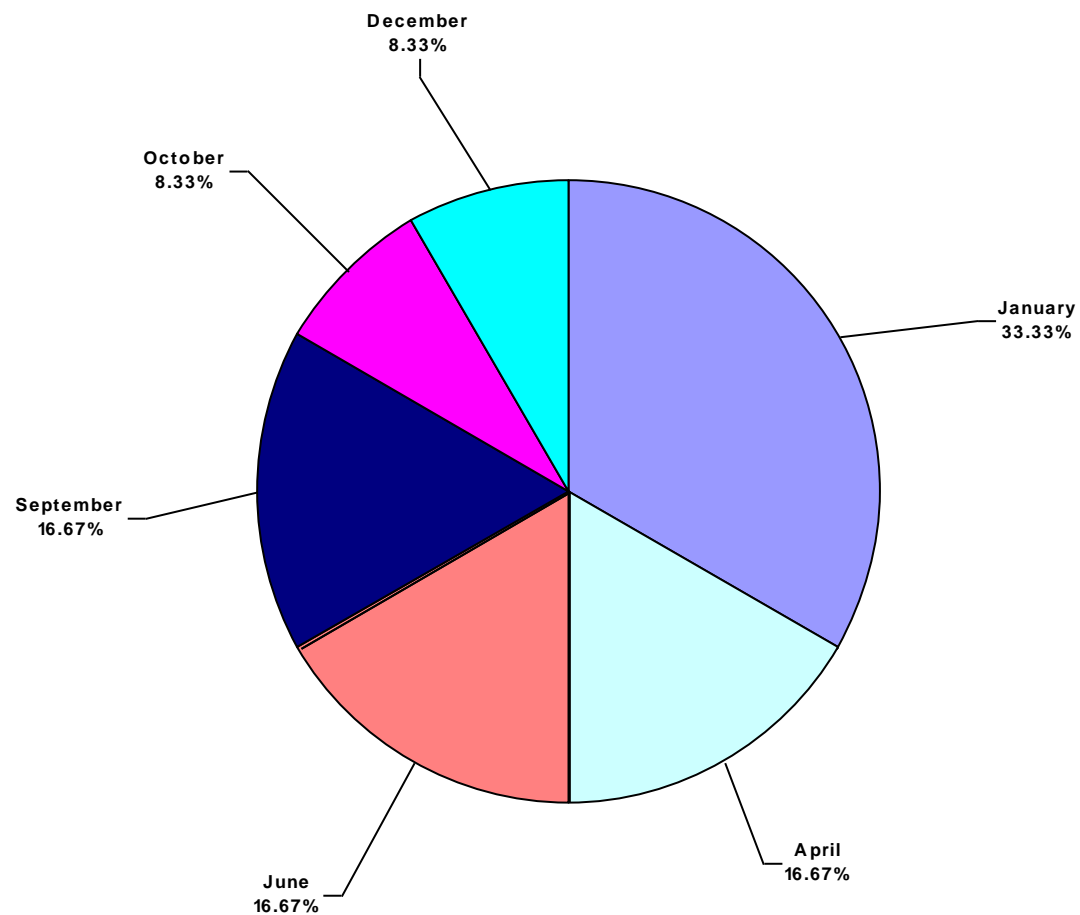
IADC 2017 South America Water Charts

South America Water Total Lost Time Incidents by Month (Chart 1)

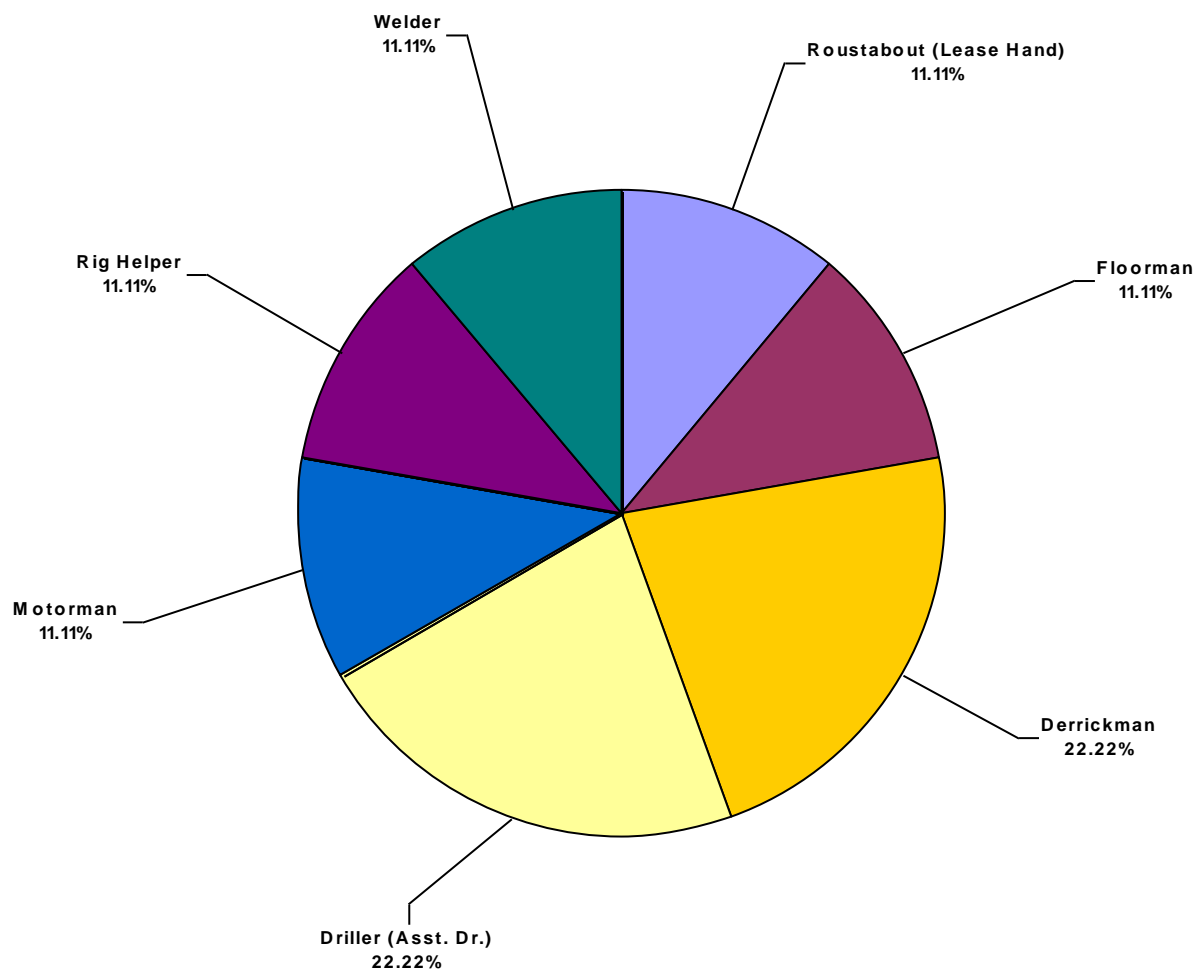
Based on 9 Incidents



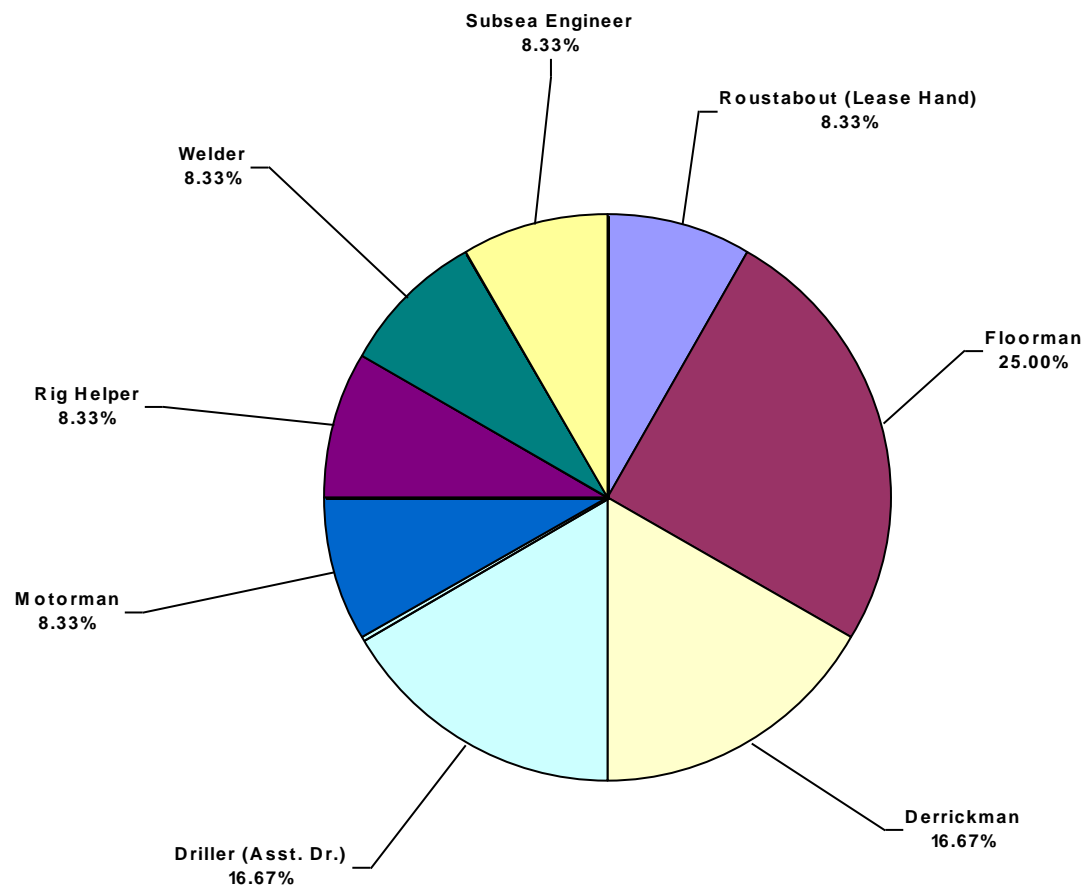
South America Water Total Recordable Incidents by Month (Chart 2)
Based on 12 Incidents



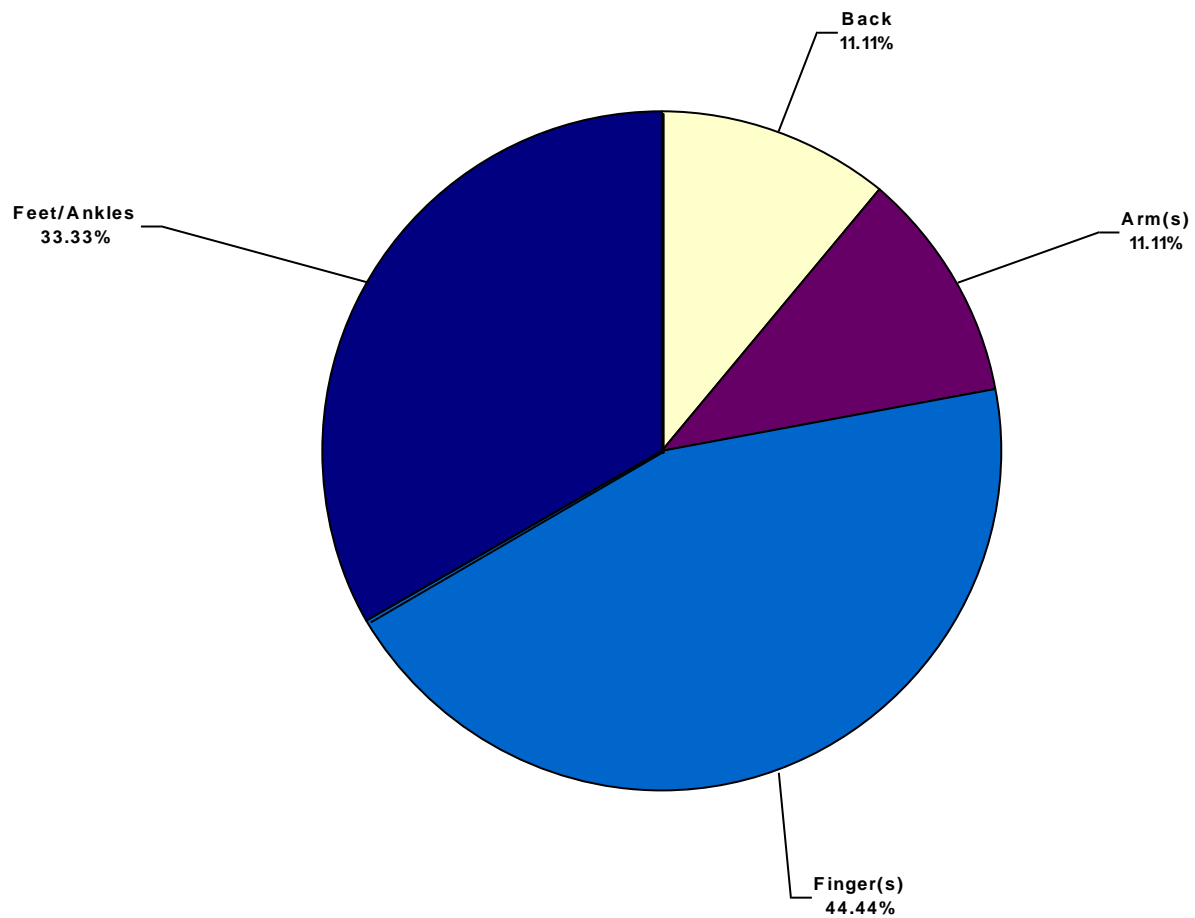
South America Water Total Lost Time Incidents by Occupation (Chart 3)
Based on 9 Incidents



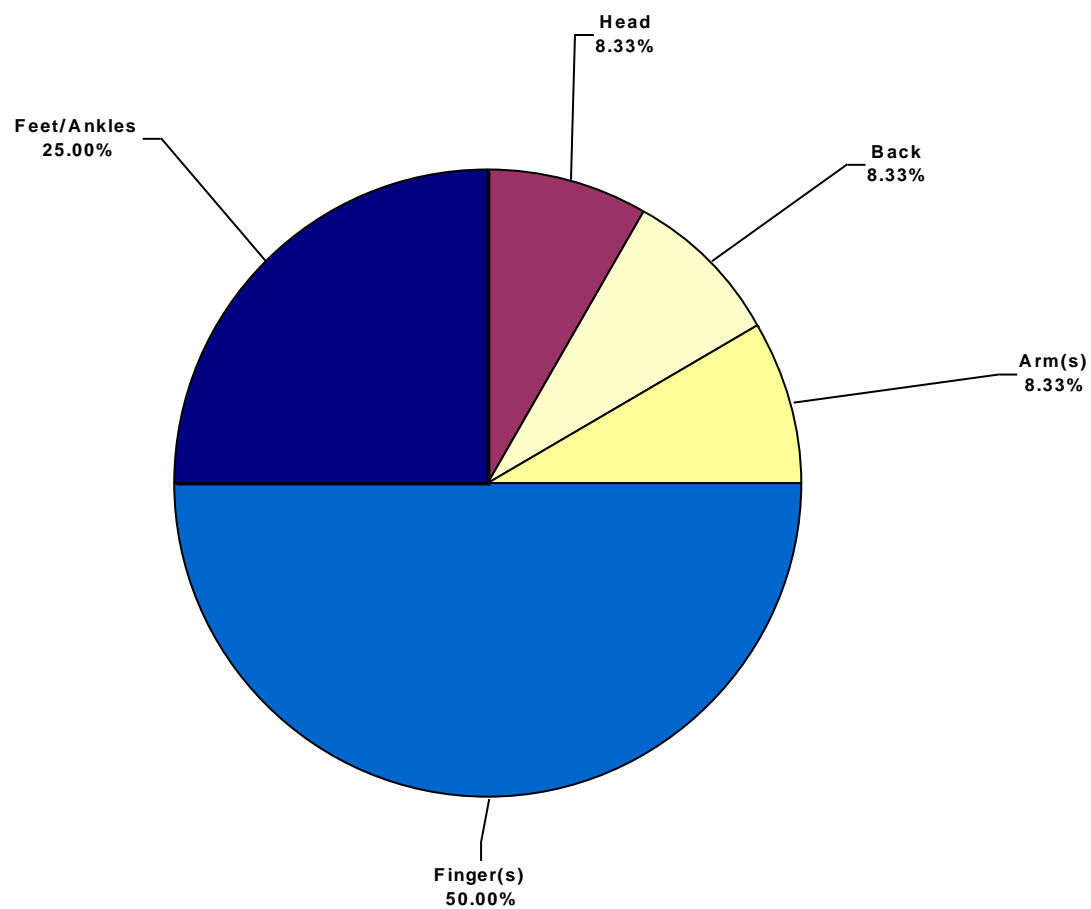
South America Water Total Recordable Incidents by Occupation (Chart 4)
Based on 12 Incidents



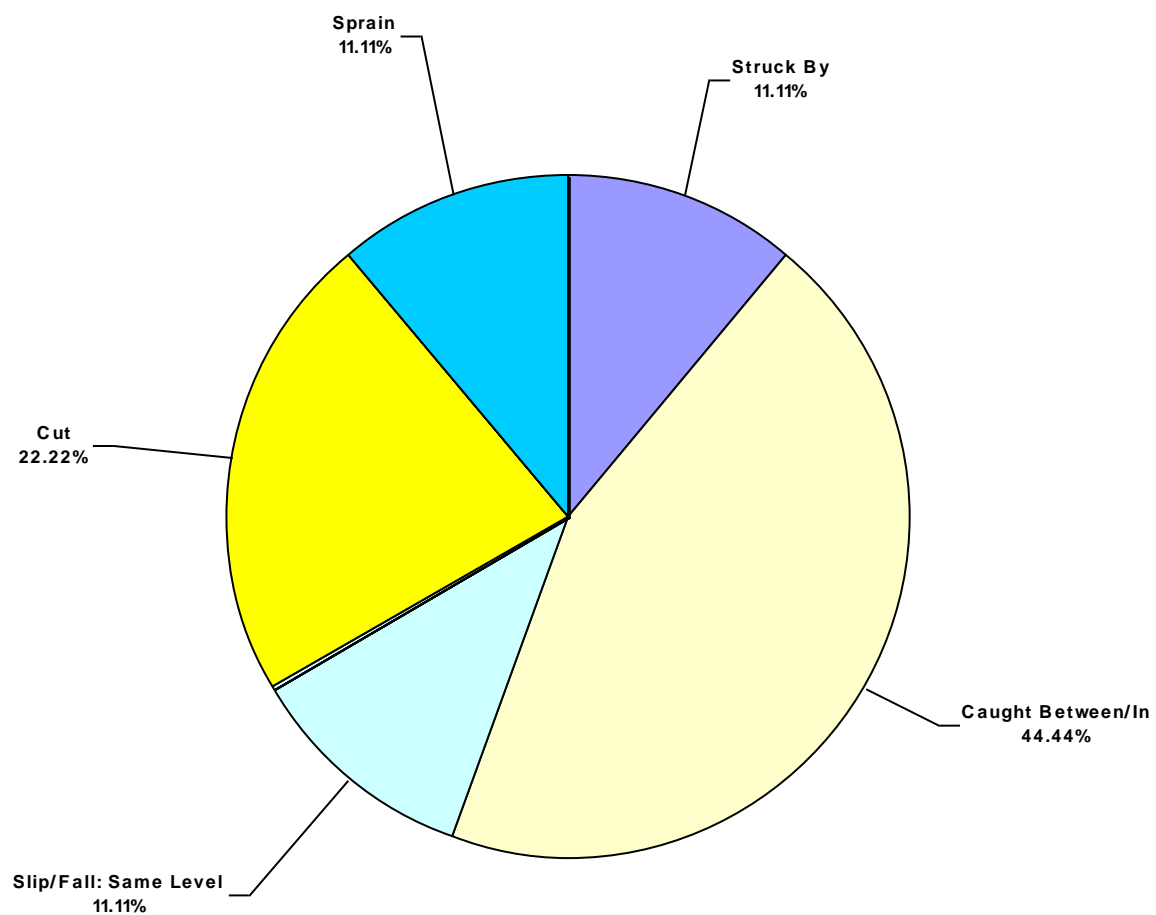
South America Water Total Lost Time Incidents by Body Part (Chart 5)
Based on 9 Incidents



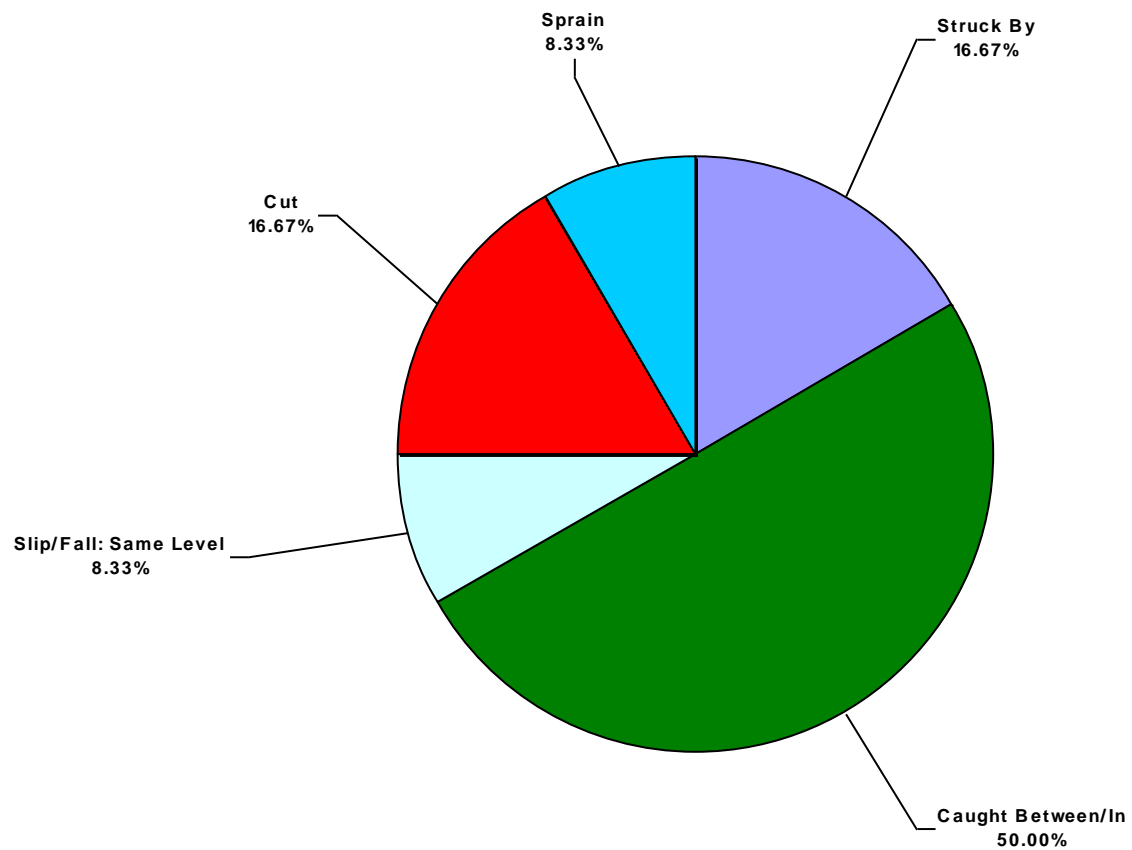
South America Water Total Recordable Incidents by Body Part (Chart 6)
Based on 12 Incidents



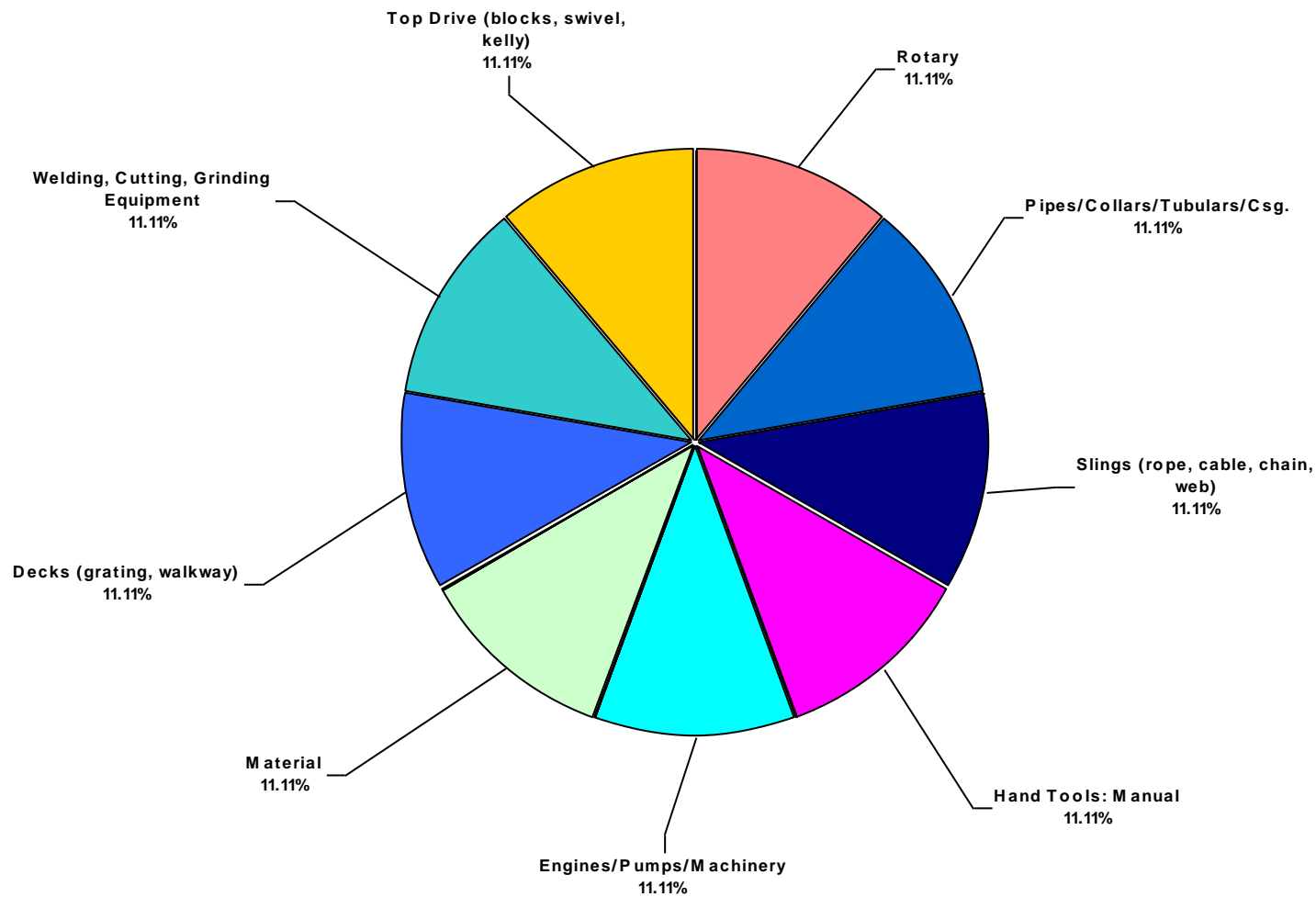
South America Water Total Lost Time Incidents by Incident Type (Chart 7)
Based on 9 Incidents



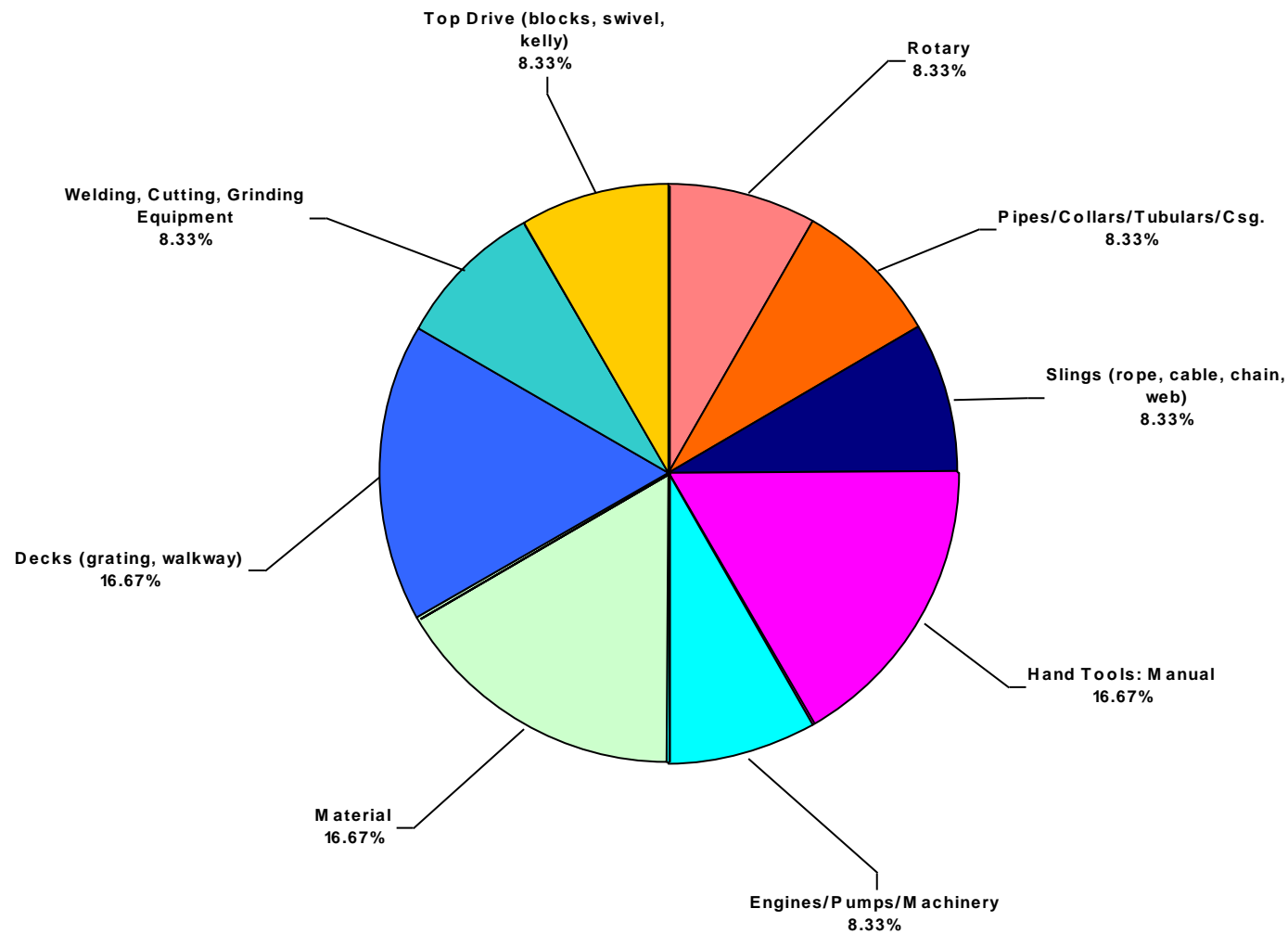
South America Water Total Recordable Incidents by Incident Type (Chart 8)
Based on 12 Incidents



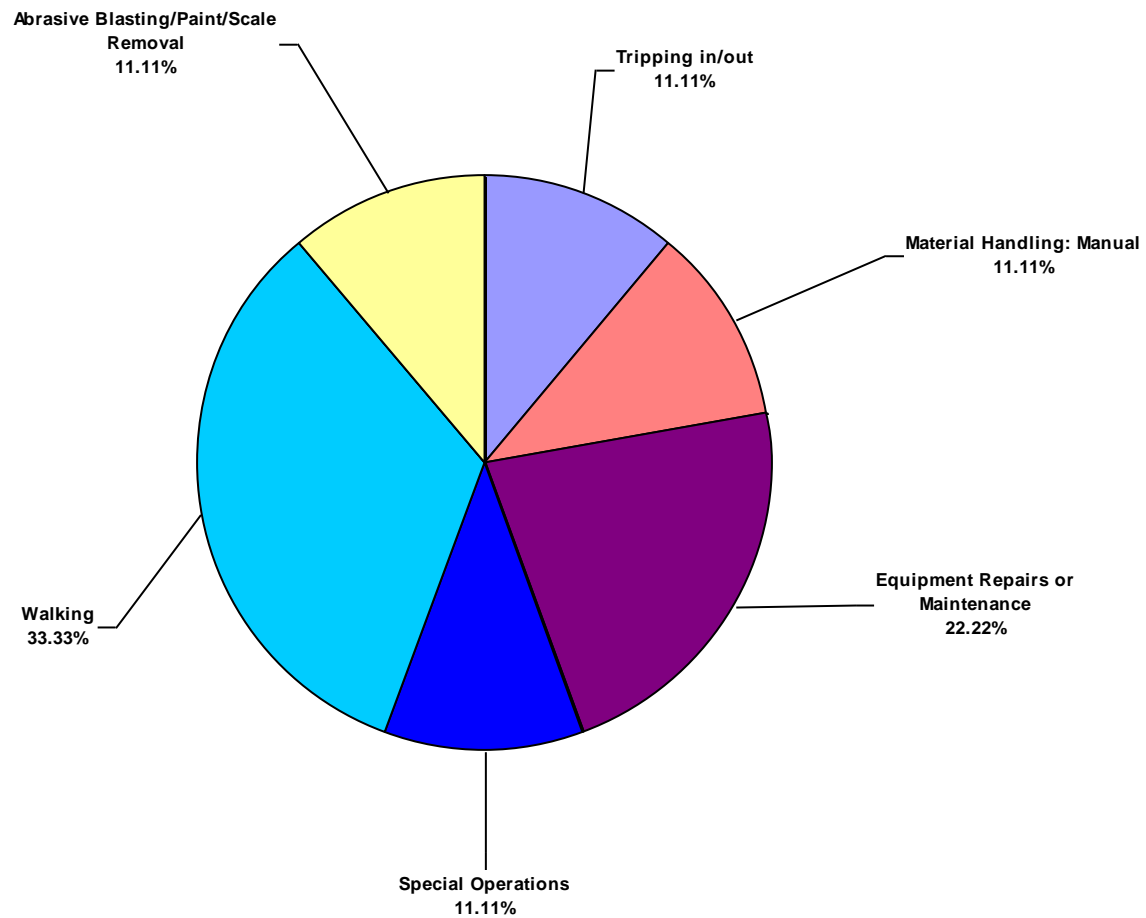
South America Water Total Lost Time Incidents by Equipment (Chart 9)
Based on 9 Incidents



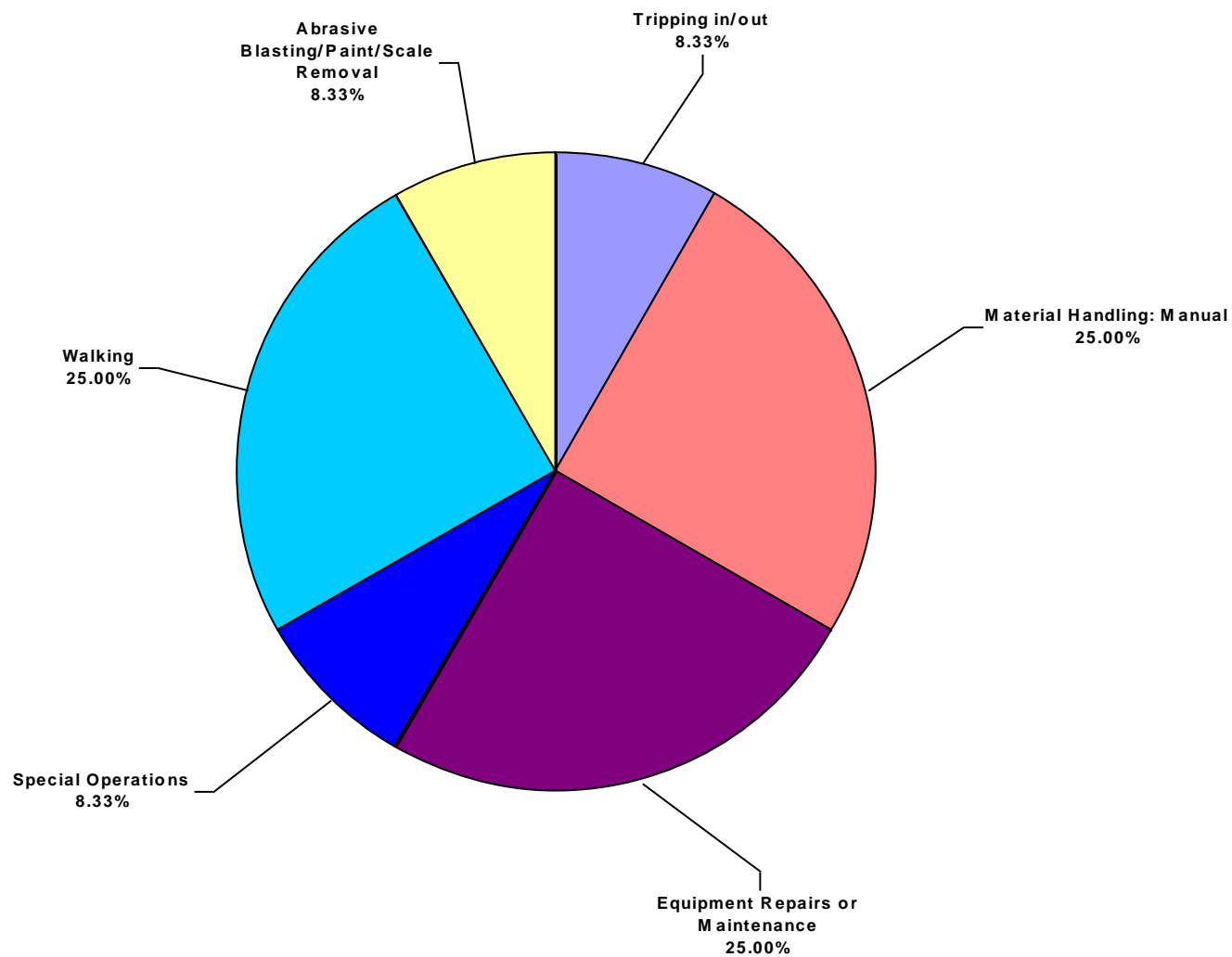
South America Water Total Recordable Incidents by Equipment (Chart 10)
Based on 12 Incidents



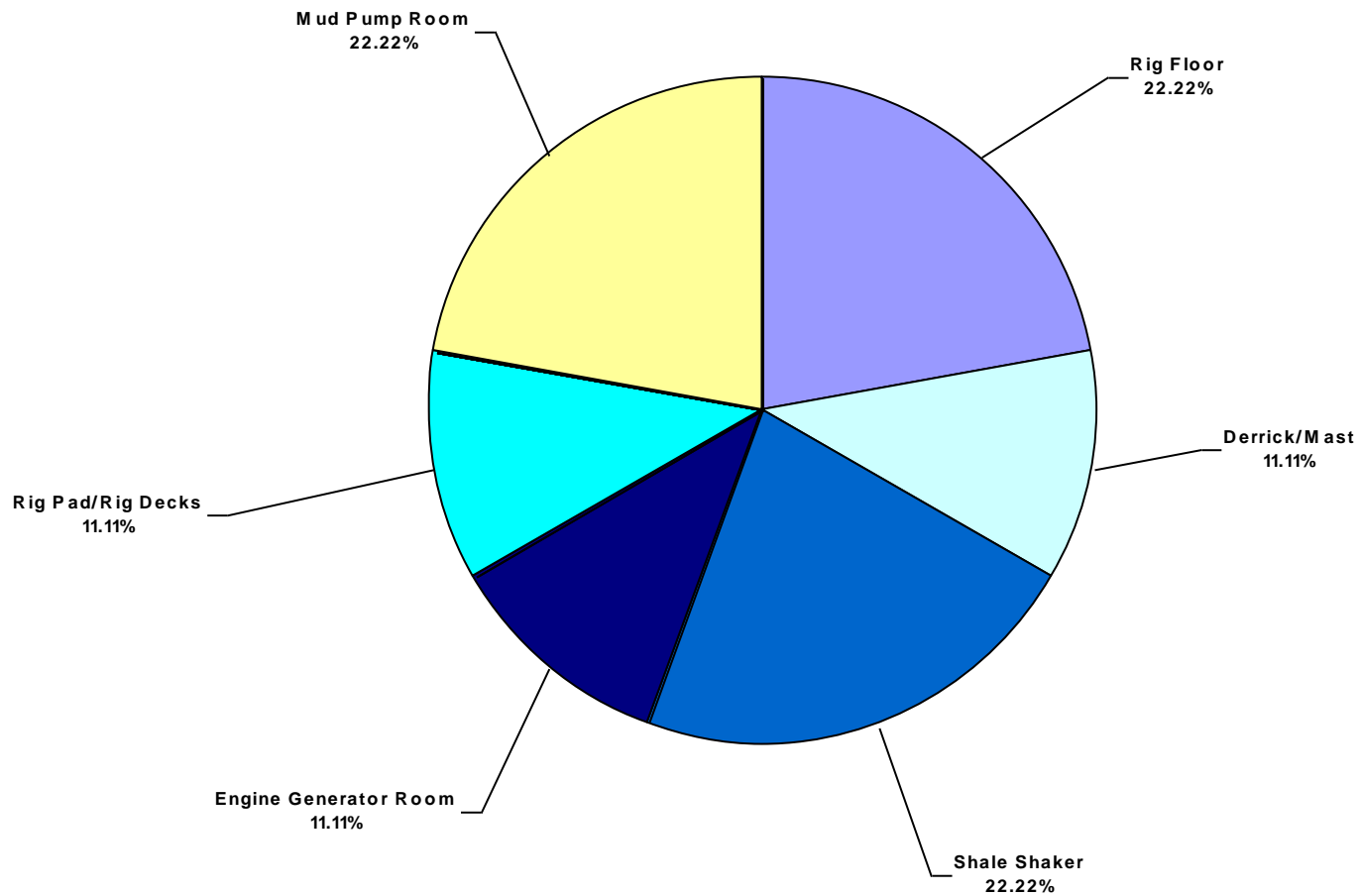
South America Water Total Lost Time Incidents by Operation (Chart 11)
Based on 9 Incidents



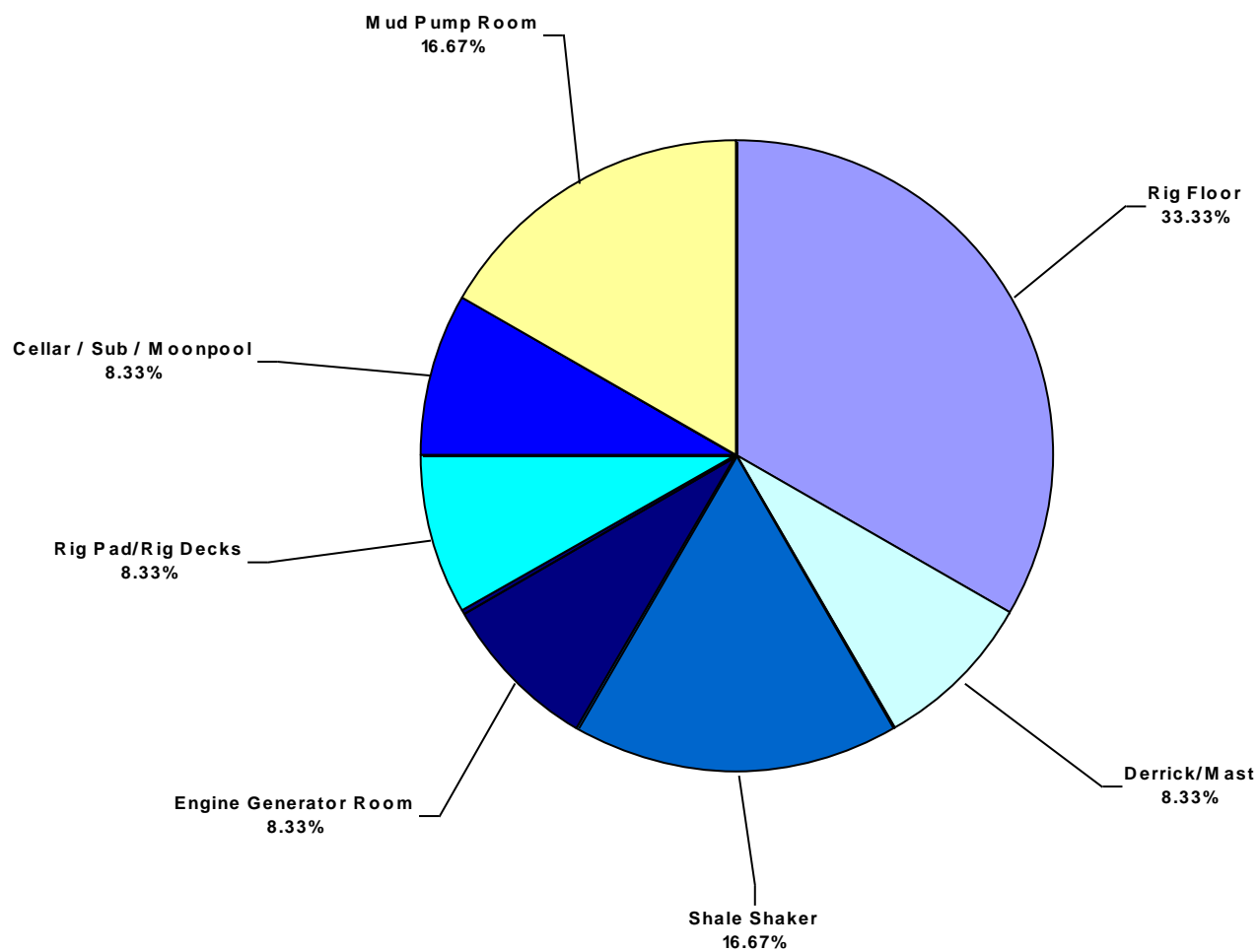
South America Water Total Recordable Incidents by Operation (Chart 12)
Based on 12 Incidents



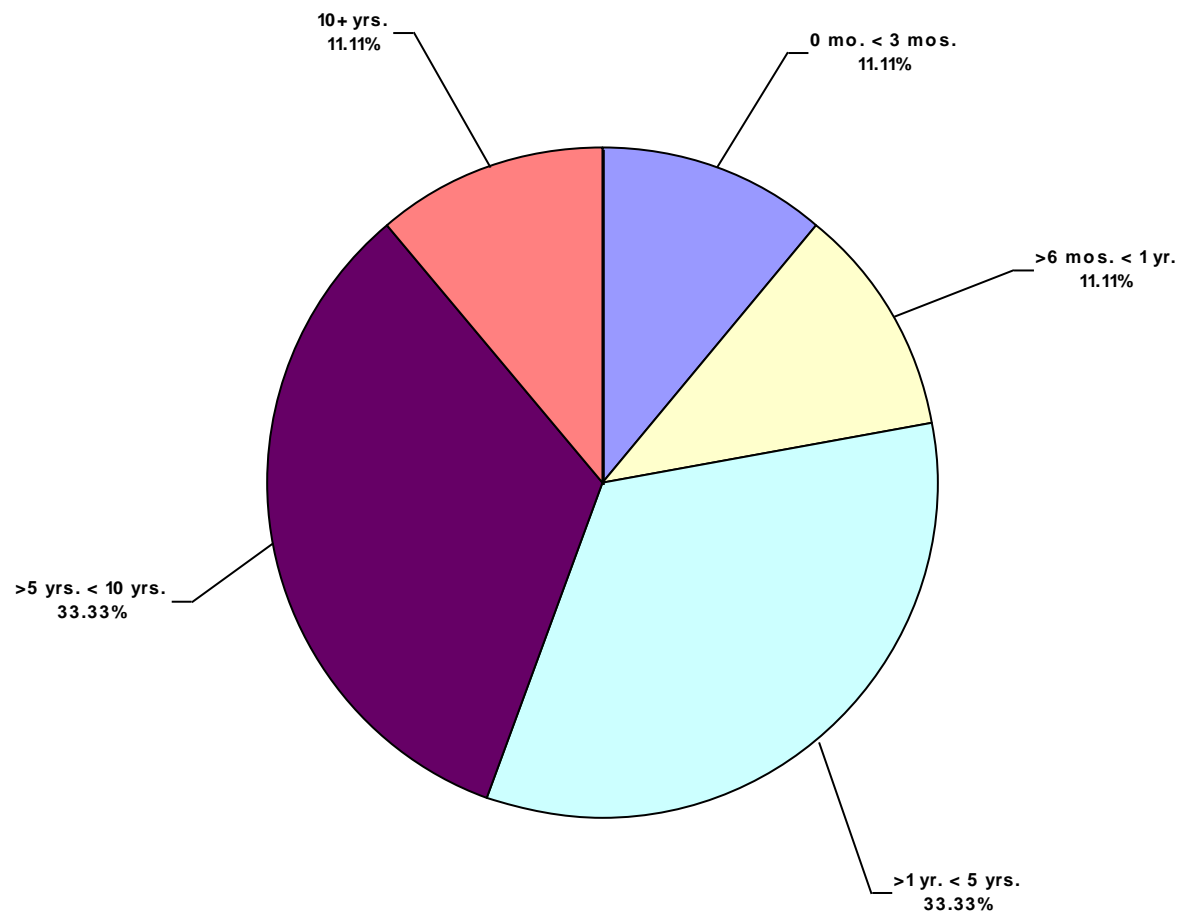
South America Water Total Lost Time Incidents by Location (Chart 13)
Based on 9 Incidents



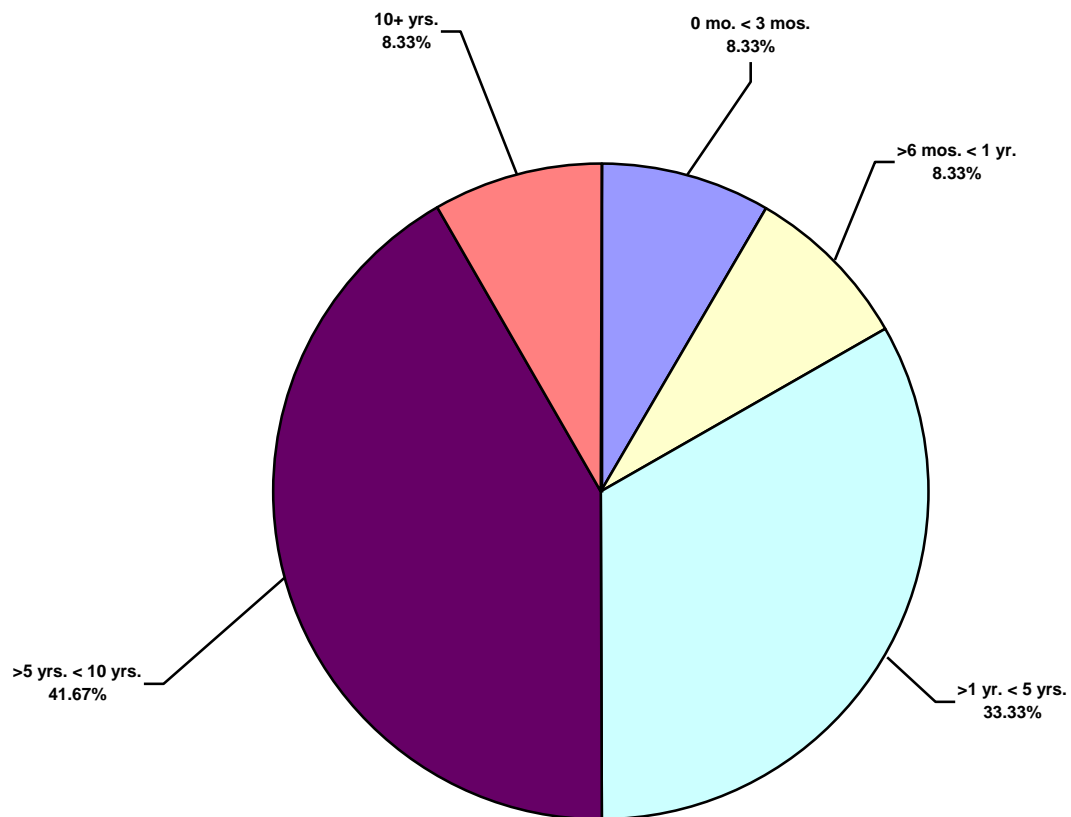
South America Water Total Recordable Incidents by Location (Chart 14)
Based on 12 Incidents



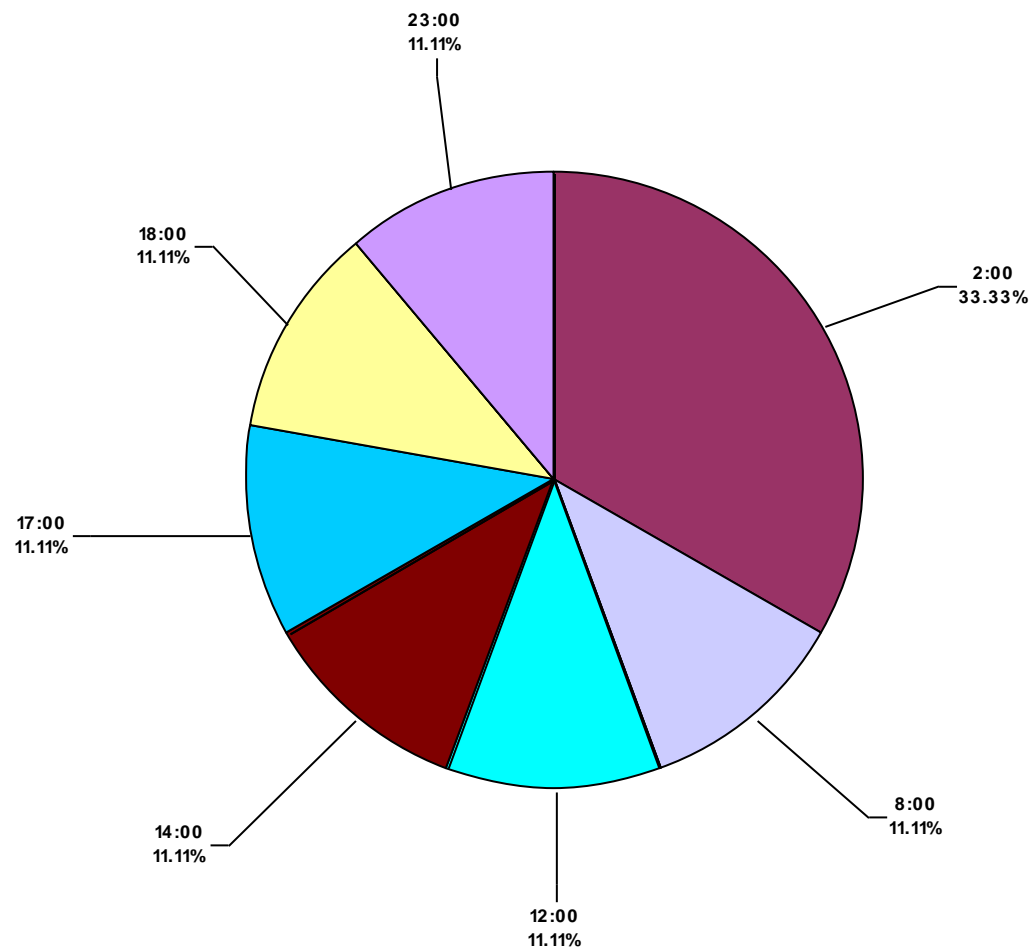
South America Water Total Lost Time Incidents by Time in Service (Chart 15)
Based on 9 Incidents



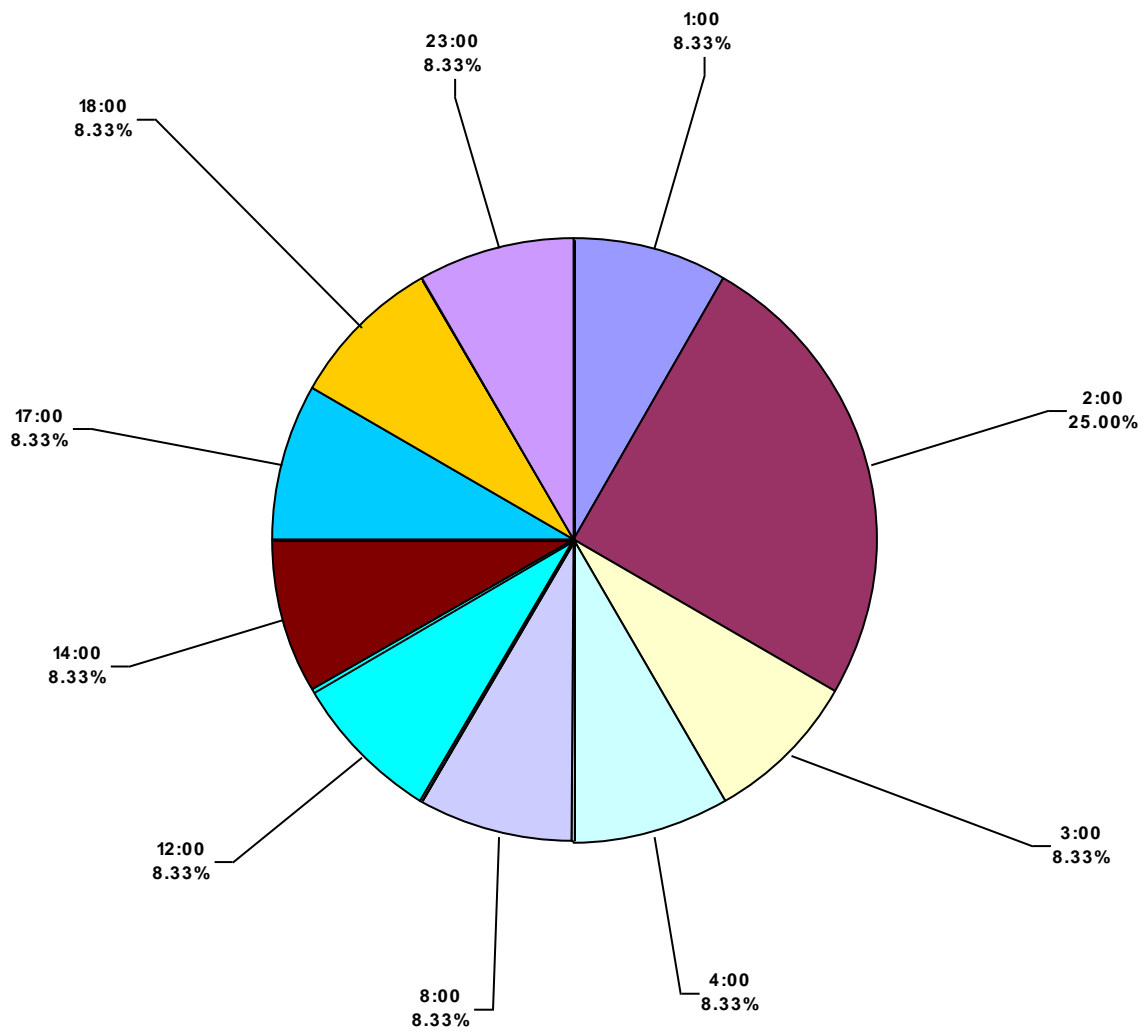
South America Water Total Recordable Incidents by Time in Service (Chart 16)
Based on 12 Incidents



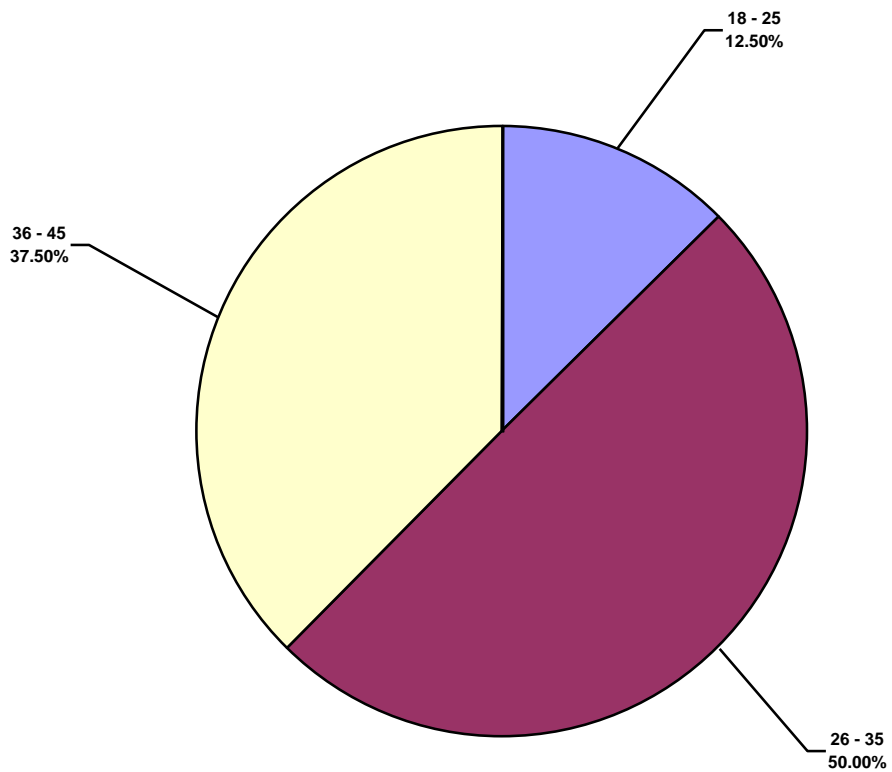
South America Water Total Lost Time Incidents by Time of Day (Chart 17)
Based on 9 Incidents



South America Water Total Recordable Incidents by Time of Day (Chart 18)
Based on 12 Incidents



South America Water Total Lost Time Incidents by Age (Chart 19)
Based on 8 Incidents



South America Water Total Recordable Incidents by Age (Chart 20)
Based on 10 Incidents

