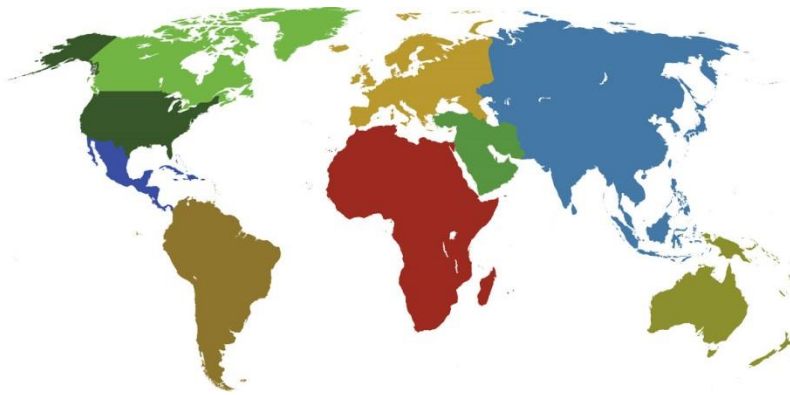




**IADC**

**IADC  
ISP PROGRAM**

**2017**



**Summary of Occupational  
Incidents  
(European Water Totals)**

*Issued 15 June 2018*

# Table of Contents

(Table of Contents is Hyperlinked, Just click on Topic & go)

IADC 2017 EUROPEAN WATER TOTALS (TABLE 1).....	1
<i>European Water Total Incidence Rates vs Man-hours (Figure 1) .....</i>	<i>1</i>
<i>European Water Total Lost Time Incidents by Month (Chart 1).....</i>	<i>2</i>
<i>European Water Total Recordable Incidents by Month (Chart 2) .....</i>	<i>3</i>
<i>European Water Total Lost Time Incidents by Occupation (Chart 3).....</i>	<i>4</i>
<i>European Water Total Recordable Incidents by Occupation (Chart 4).....</i>	<i>5</i>
<i>European Water Total Lost Time Incidents by Body Part (Chart 5).....</i>	<i>6</i>
<i>European Water Total Recordable Incidents by Body Part (Chart 6) .....</i>	<i>7</i>
<i>European Water Total Lost Time Incidents by Incident Type (Chart 7) .....</i>	<i>8</i>
<i>European Water Total Recordable Incidents by Incident Type (Chart 8).....</i>	<i>9</i>
<i>European Water Total Lost Time Incidents by Equipment (Chart 9).....</i>	<i>10</i>
<i>European Water Total Recordable Incidents by Equipment (Chart 10) .....</i>	<i>11</i>
<i>European Water Total Lost Time Incidents by Operation (Chart 11).....</i>	<i>12</i>
<i>European Water Total Recordable Incidents by Operation (Chart 12) .....</i>	<i>13</i>
<i>European Water Total Lost Time Incidents by Location (Chart 13).....</i>	<i>14</i>
<i>European Water Total Recordable Incidents by Location (Chart 14) .....</i>	<i>15</i>
<i>European Water Total Lost Time Incidents by Time in Service (Chart 15) .....</i>	<i>16</i>
<i>European Water Total Recordable Incidents by Time in Service (Chart 16).....</i>	<i>17</i>
<i>European Water Total Lost Time Incidents by Time of Day (Chart 17) .....</i>	<i>18</i>
<i>European Water Total Recordable Incidents by Time of Day (Chart 18).....</i>	<i>19</i>
<i>European Water Total Lost Time Incidents by Age (Chart 19).....</i>	<i>20</i>
<i>European Water Total Recordable Incidents by Age (Chart 20) .....</i>	<i>21</i>

# IADC 2017 European Water Totals (Table 1)

	<u>Total</u>
Total Man-hours	25,681,274
Total Medical Treatment Incidents	28
Total Restricted Work Incidents	15
Total Lost Time Incidents	18
Total Fatalities	1
Total Recordables	62
MTO Incidence Rate	0.22
RWC Incidence Rate	0.12
LTI Incidence Rate	0.15
LTI Frequency Rate	0.74
DART Incidence Rate	0.26
DART Frequency Rate	1.32
Recordable Incidence Rate	0.48
Recordable Frequency Rate	2.41

Companies Reporting: Water – 20

Medical Treatment Incidence Rate = MTOs X 200,000

Restricted Work Incidence Rate = RWCs X 200,000

Lost Time Incidence Rate = LTIs + FTLs X 200,000

DART Incidence Rate = LTIs + RWC X 200,000

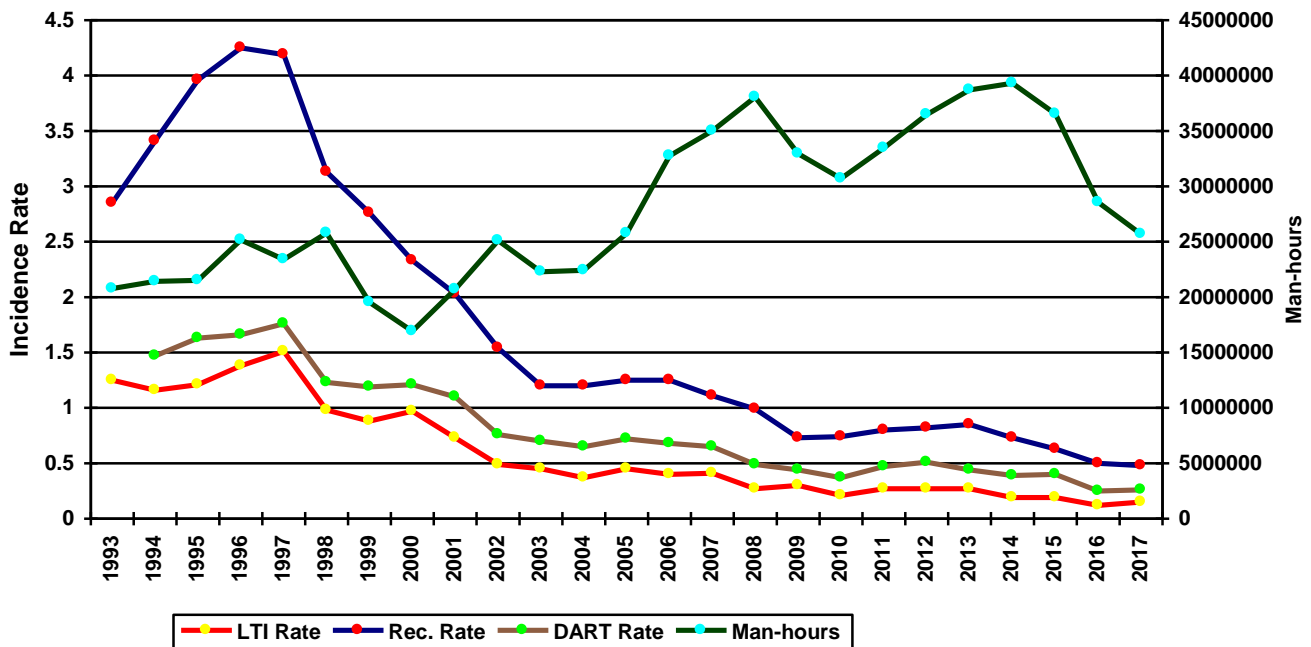
Recordable Incidence Rate = RCRD X 200,000

Lost Time Frequency Rate = LTIs +FTLs X 1,000,000

DART Frequency Rate = LTIs + RWC X 1,000,000

Recordable Frequency Rate = RCRD X 1,000,000

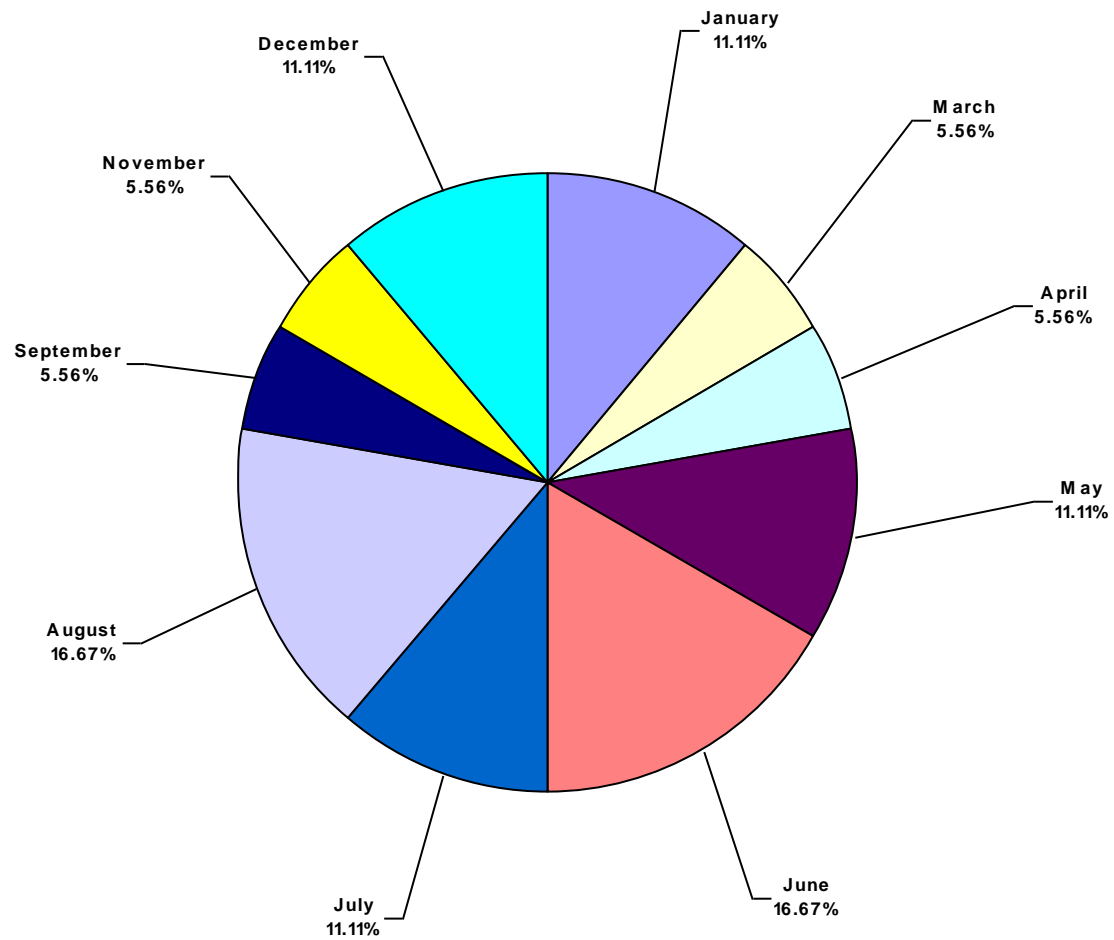
European Water Total Incidence Rates vs Man-hours (Figure 1)



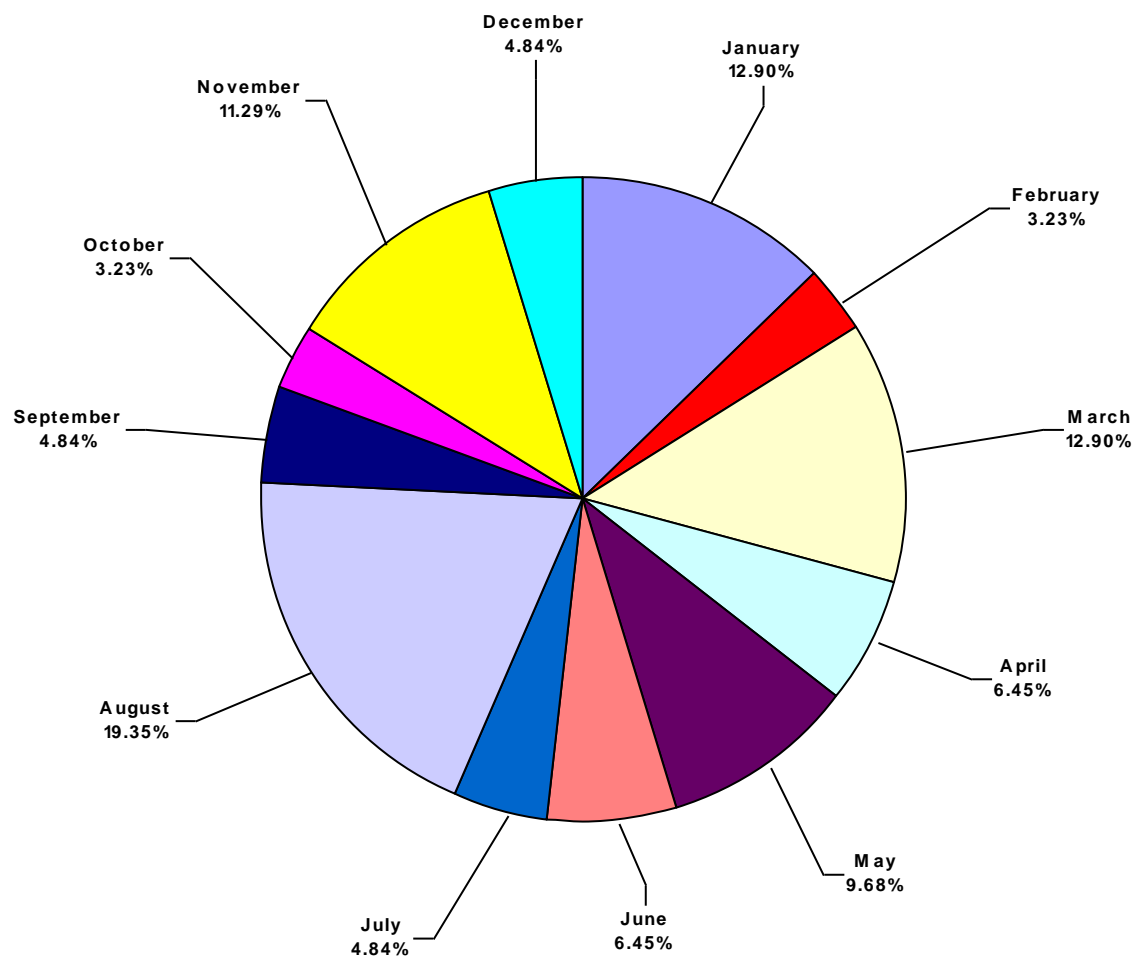
### IADC 2017 European Water Charts

#### European Water Total Lost Time Incidents by Month (Chart 1)

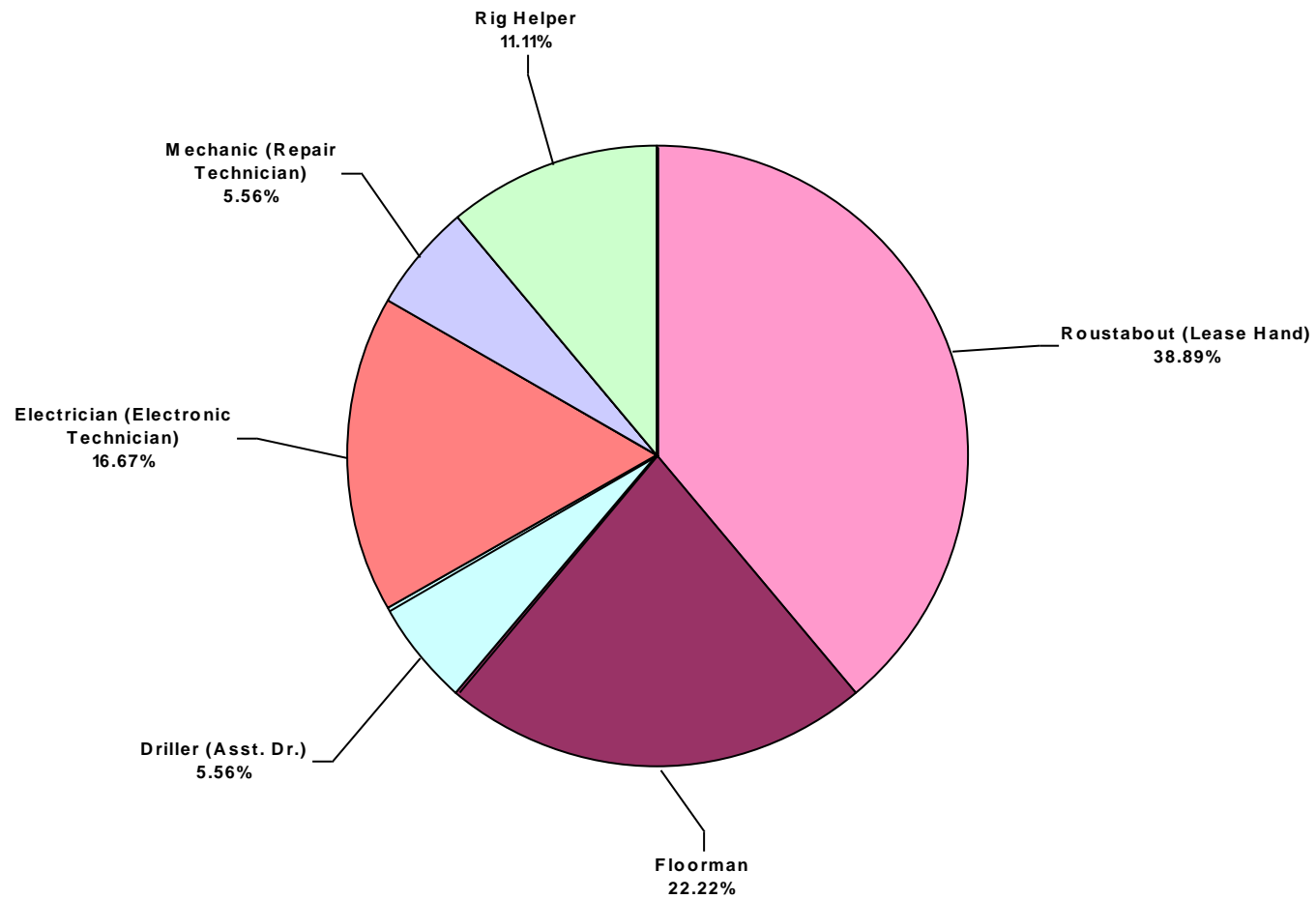
Based on 18 Incidents



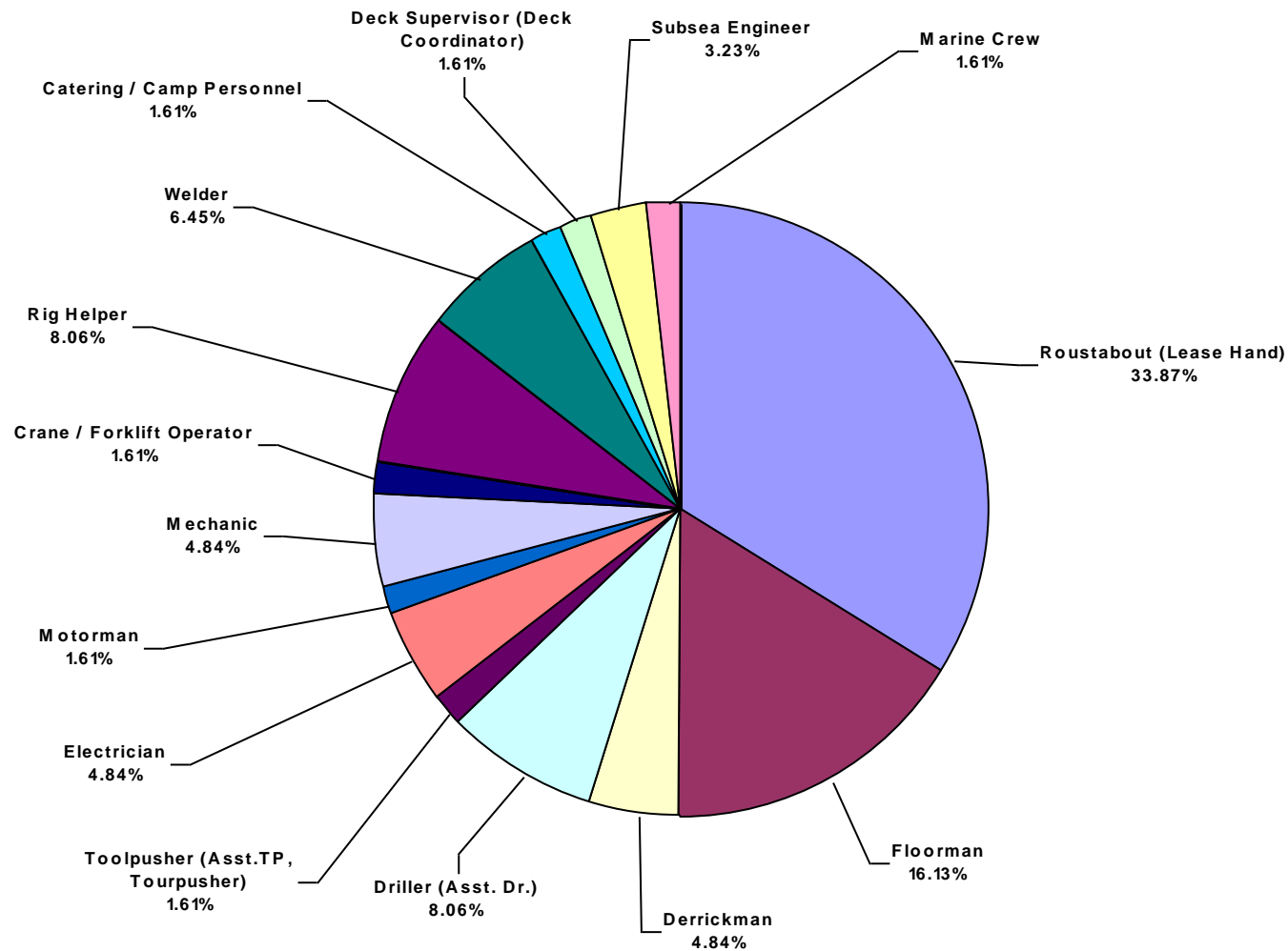
**European Water Total Recordable Incidents by Month (Chart 2)**  
Based on 62 Incidents



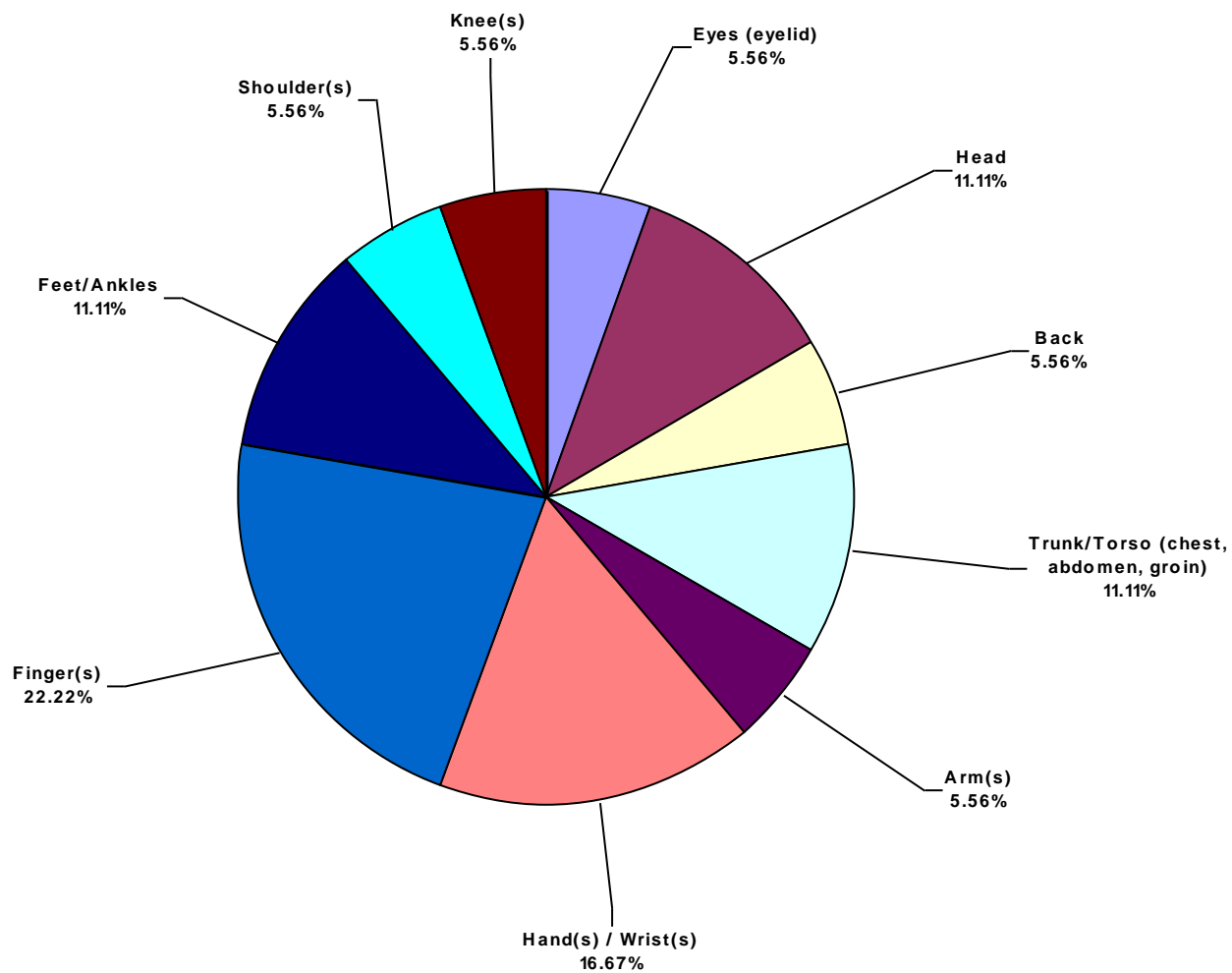
**European Water Total Lost Time Incidents by Occupation (Chart 3)**  
Based on 18 Incidents



**European Water Total Recordable Incidents by Occupation (Chart 4)**  
Based on 62 Incidents

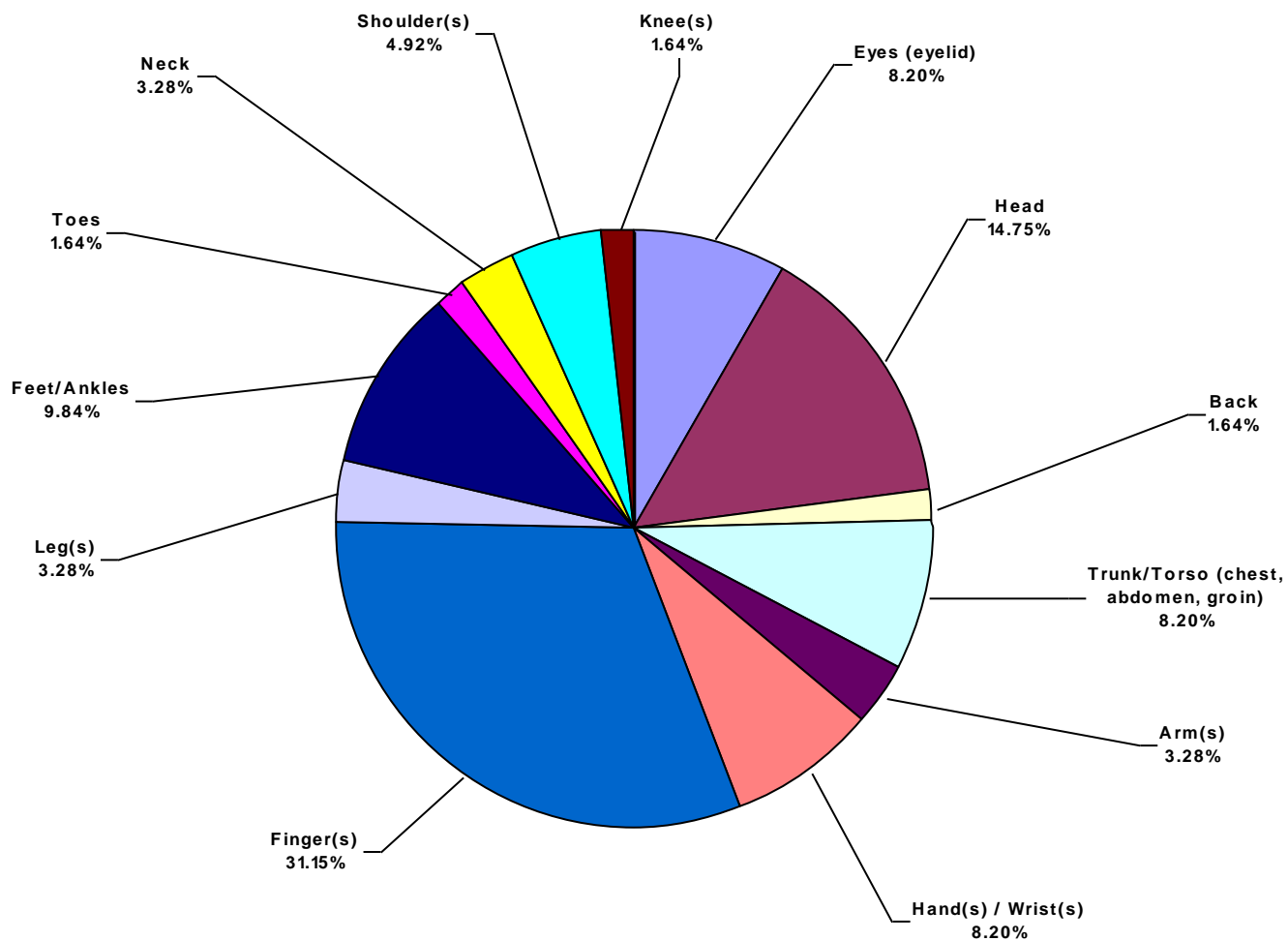


**European Water Total Lost Time Incidents by Body Part (Chart 5)**  
Based on 18 Incidents

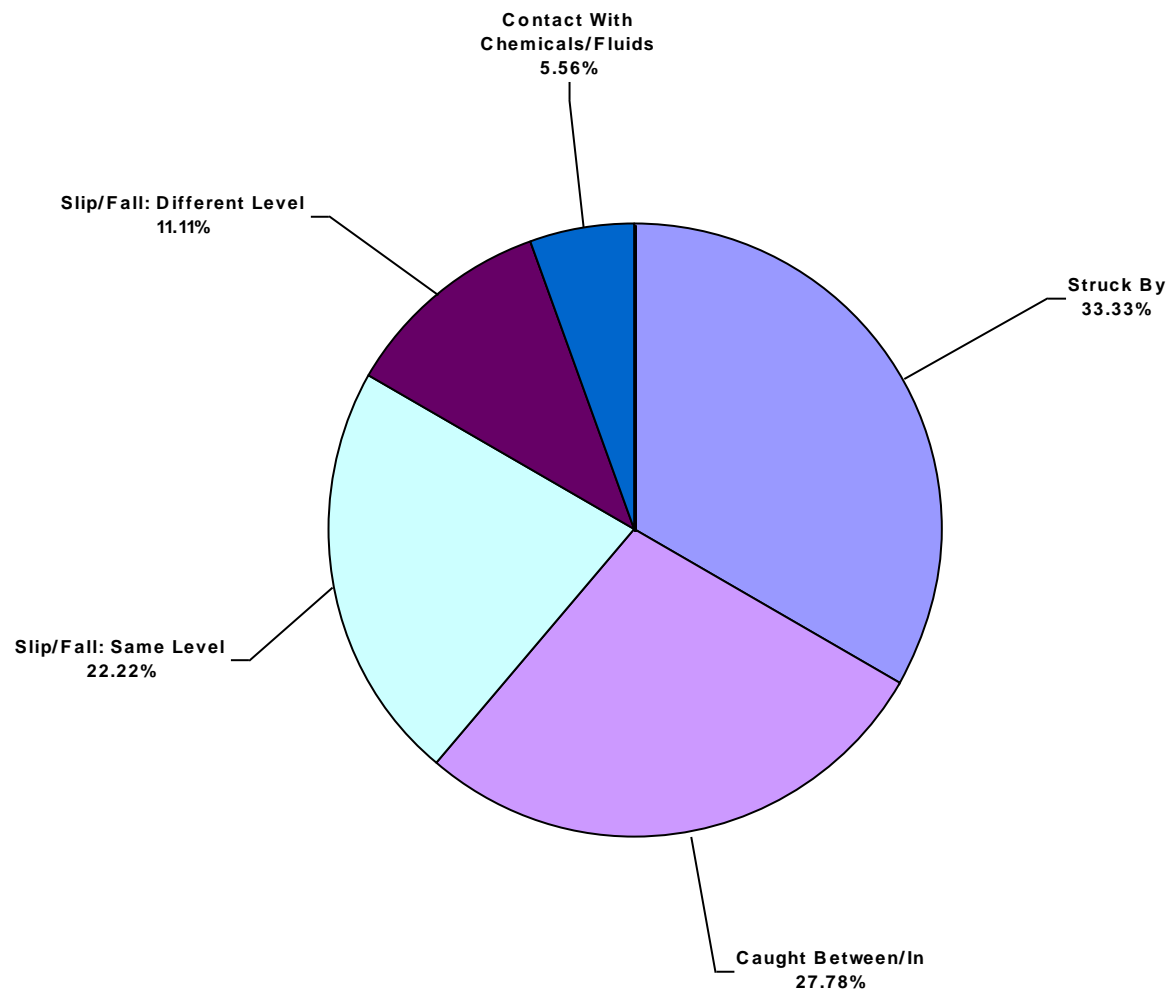




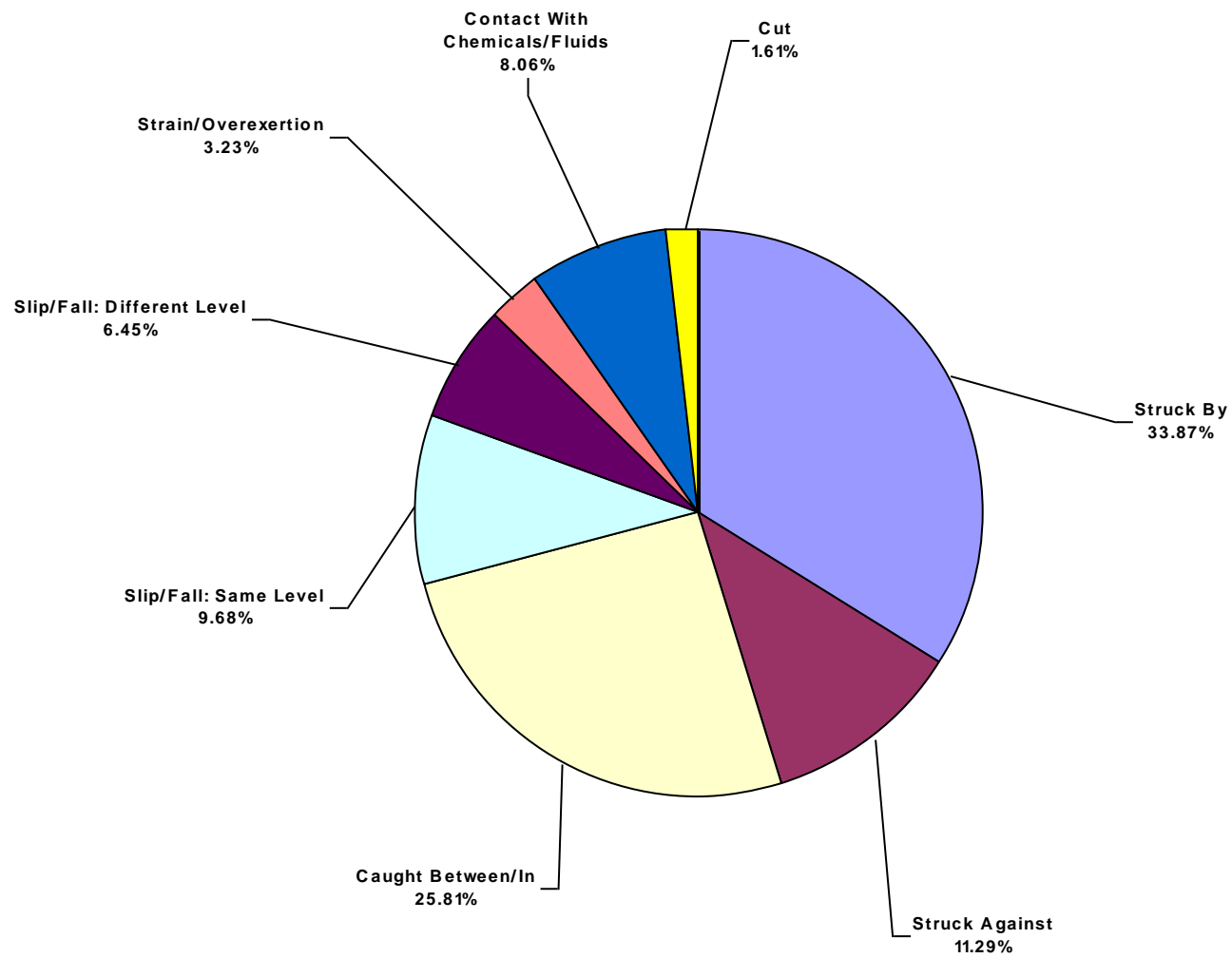
**European Water Total Recordable Incidents by Body Part (Chart 6)**  
Based on 61 Incidents



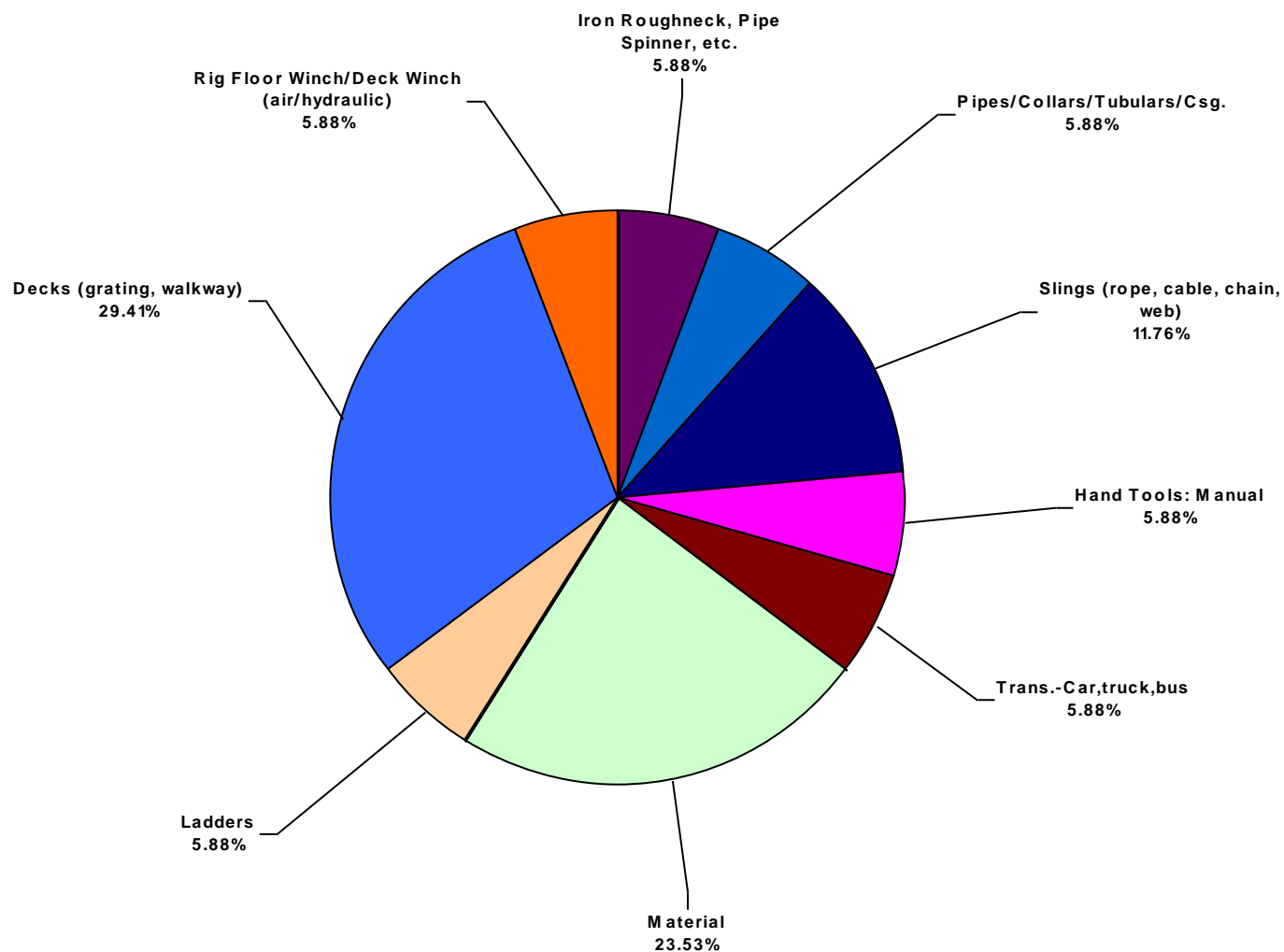
**European Water Total Lost Time Incidents by Incident Type (Chart 7)**  
Based on 18 Incidents



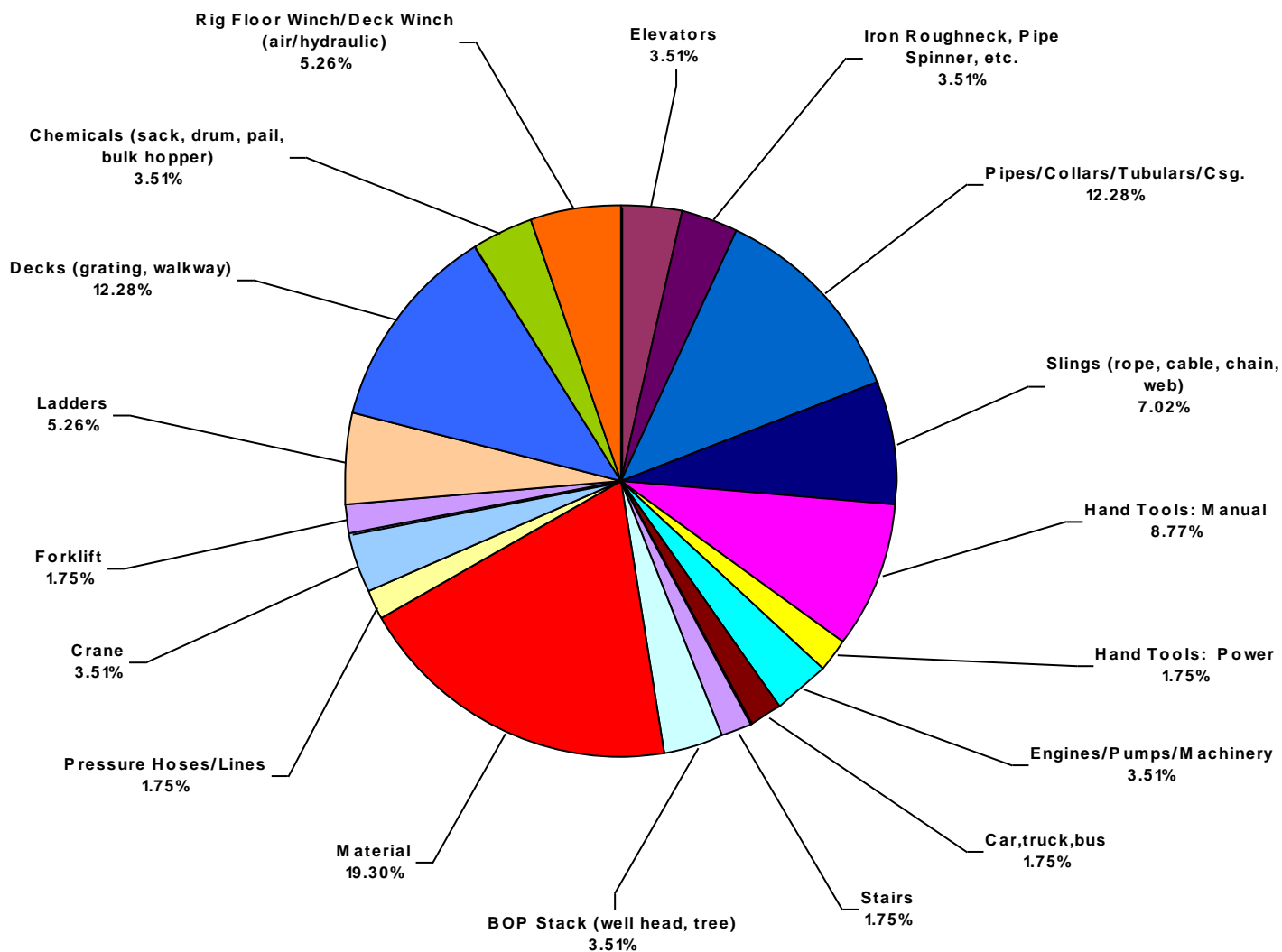
European Water Total Recordable Incidents by Incident Type (Chart 8)  
Based on 62 Incidents



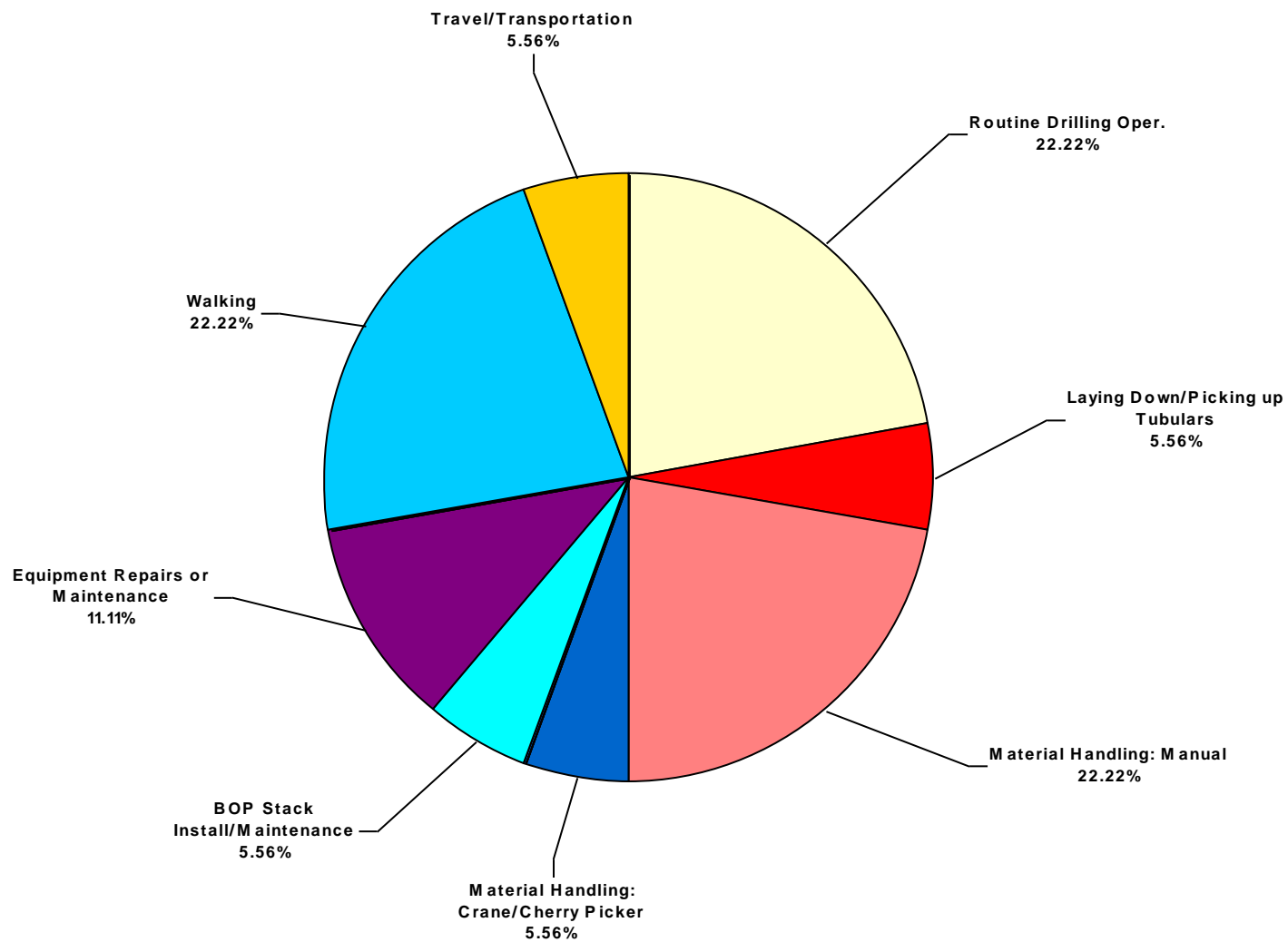
**European Water Total Lost Time Incidents by Equipment (Chart 9)**  
Based on 17 Incidents



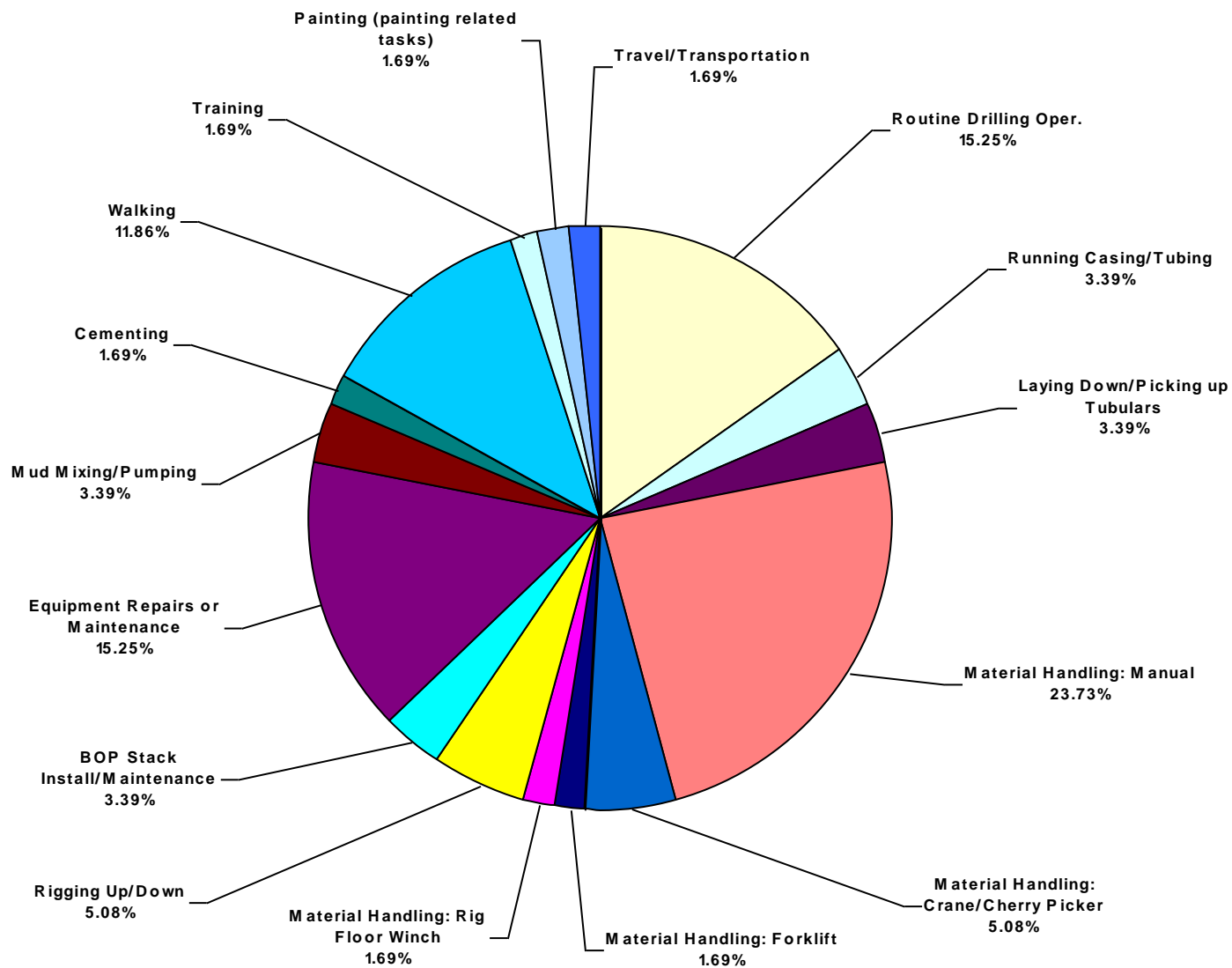
**European Water Total Recordable Incidents by Equipment (Chart 10)**  
Based on 57 Incidents



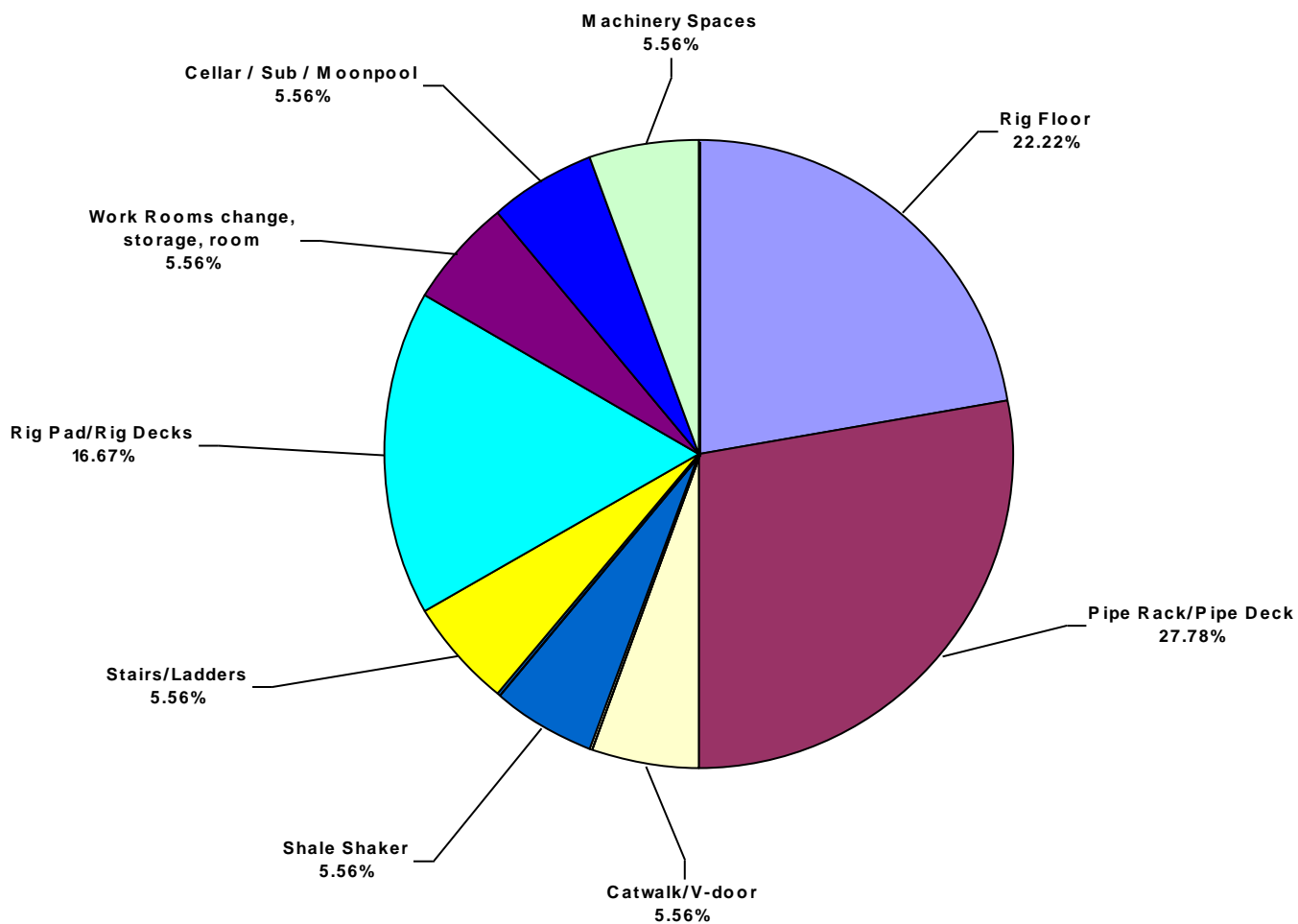
**European Water Total Lost Time Incidents by Operation (Chart 11)**  
Based on 18 Incidents



**European Water Total Recordable Incidents by Operation (Chart 12)**  
Based on 59 Incidents

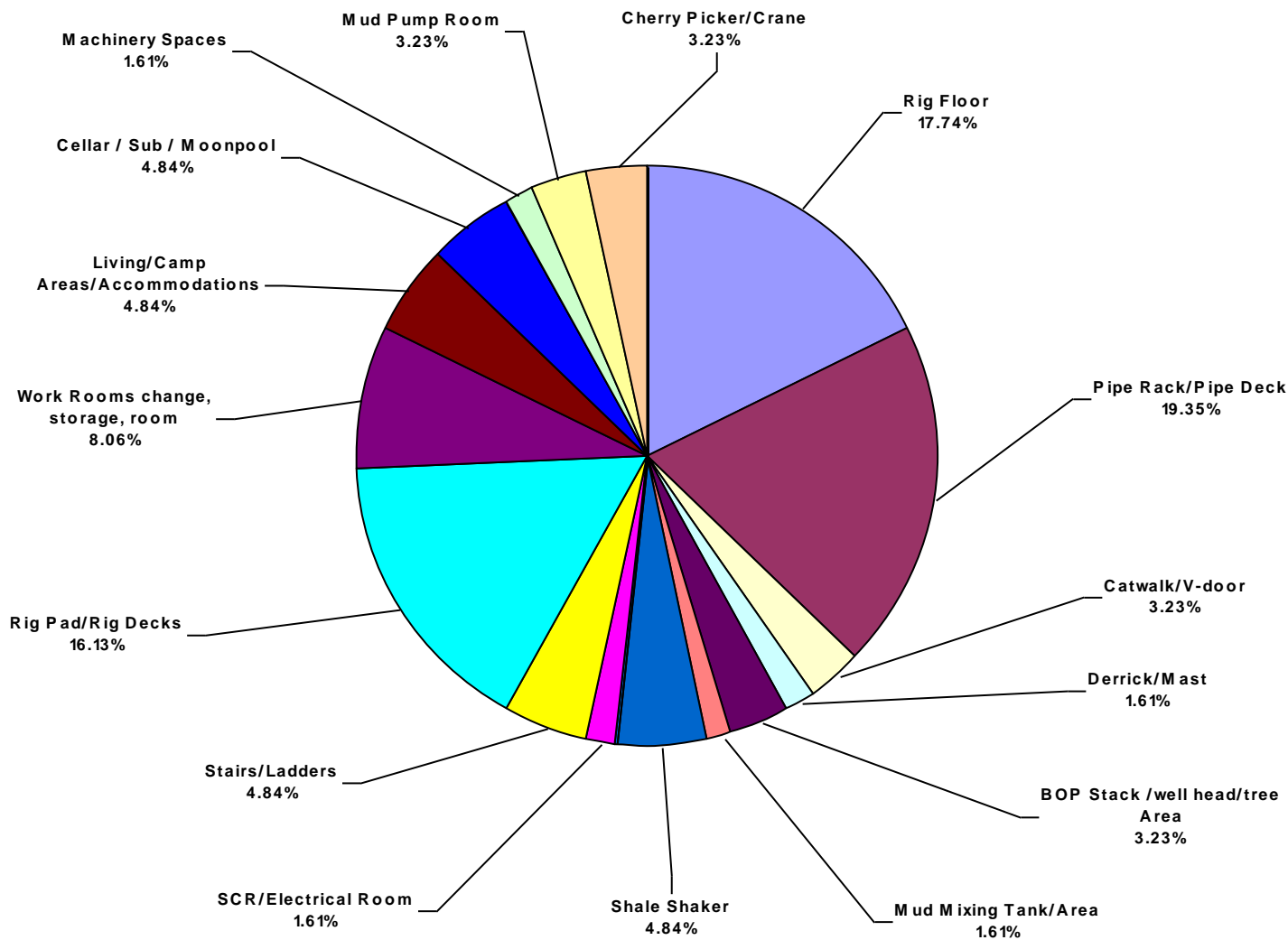


**European Water Total Lost Time Incidents by Location (Chart 13)**  
Based on 18 Incidents

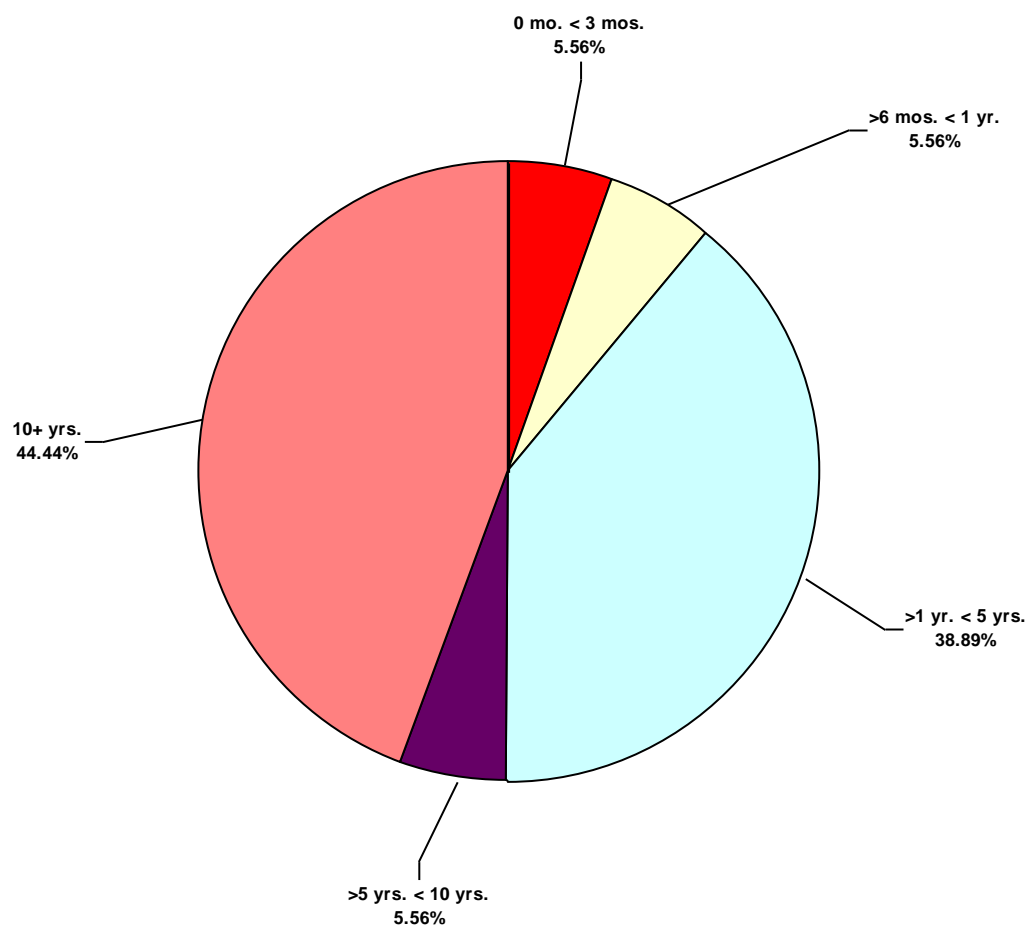




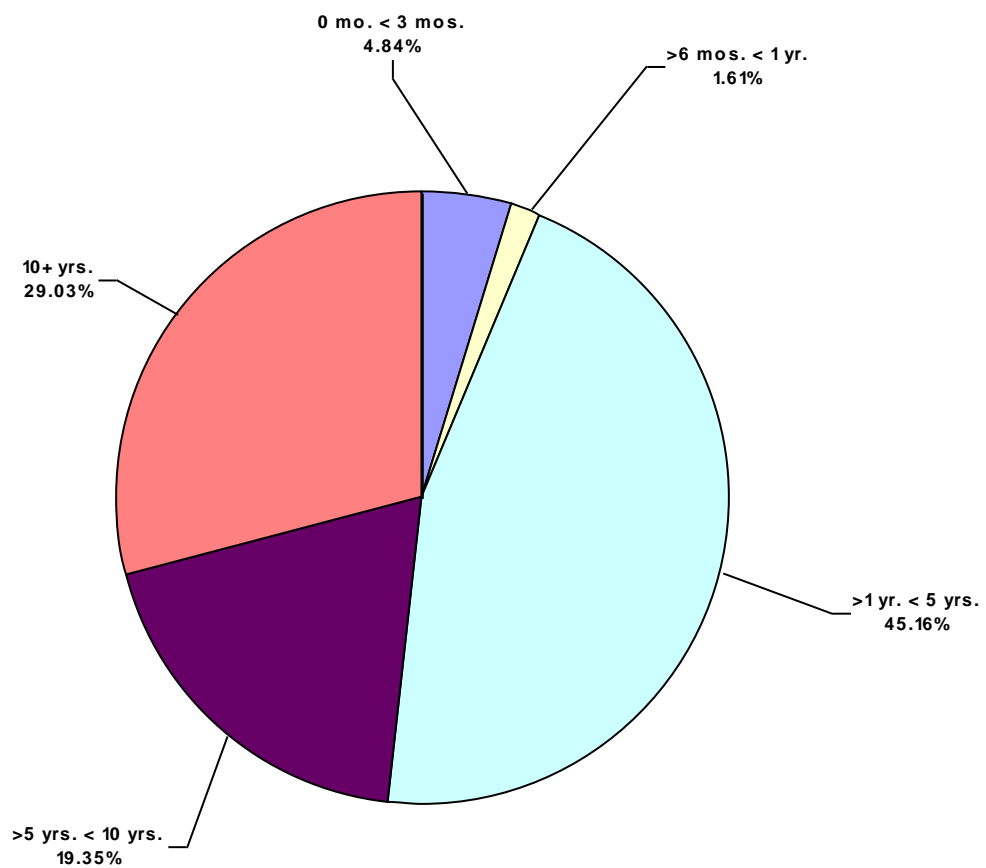
**European Water Total Recordable Incidents by Location (Chart 14)**  
Based on 62 Incidents



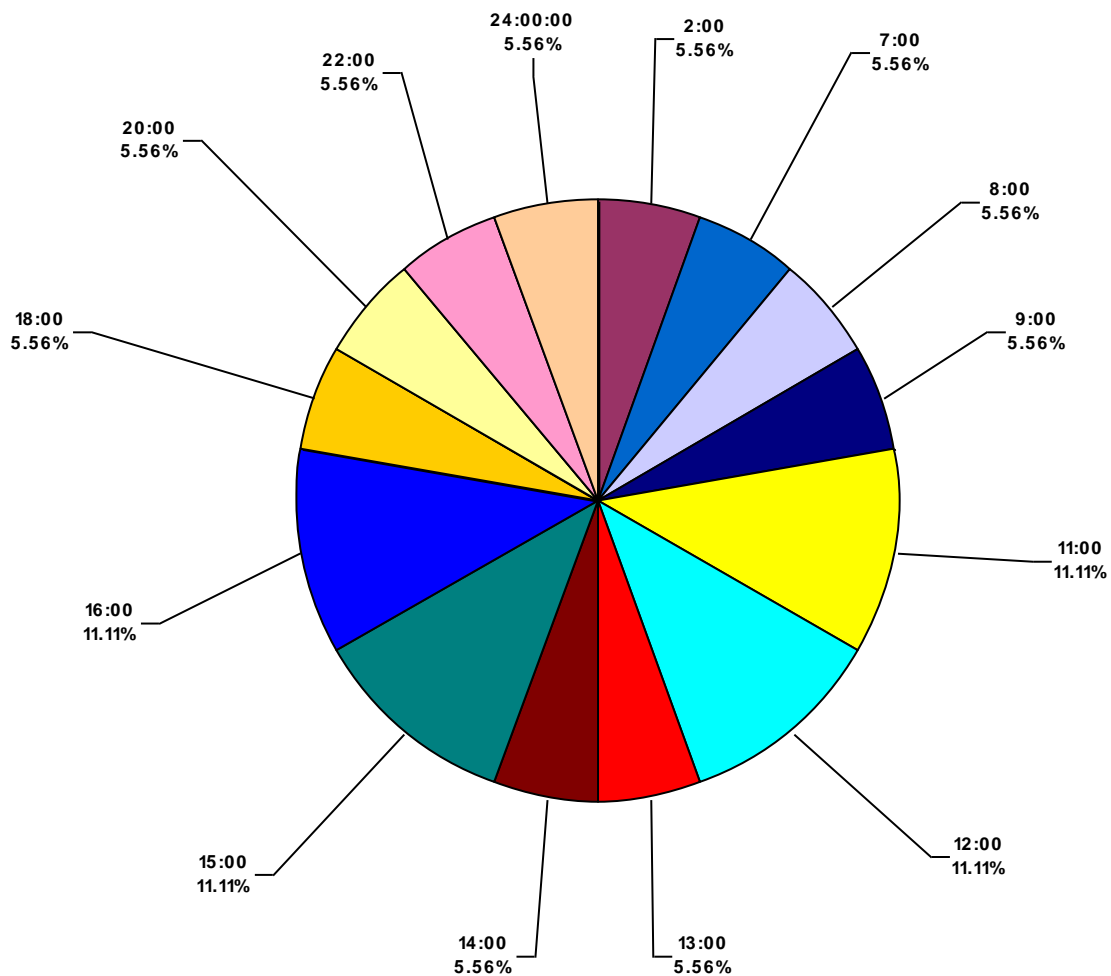
European Water Total Lost Time Incidents by Time in Service (Chart 15)  
Based on 18 Incidents



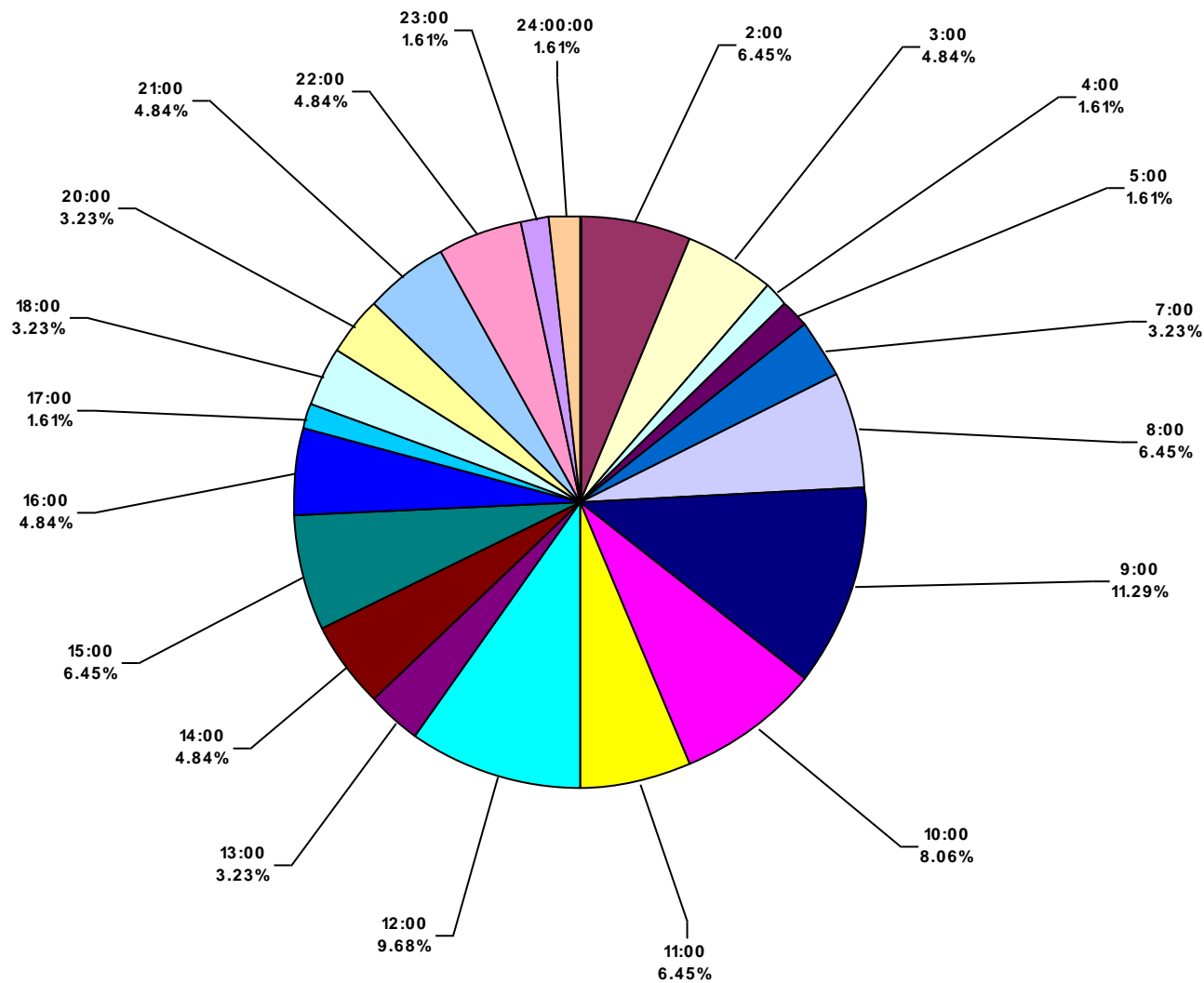
European Water Total Recordable Incidents by Time in Service (Chart 16)  
Based on 62 Incidents



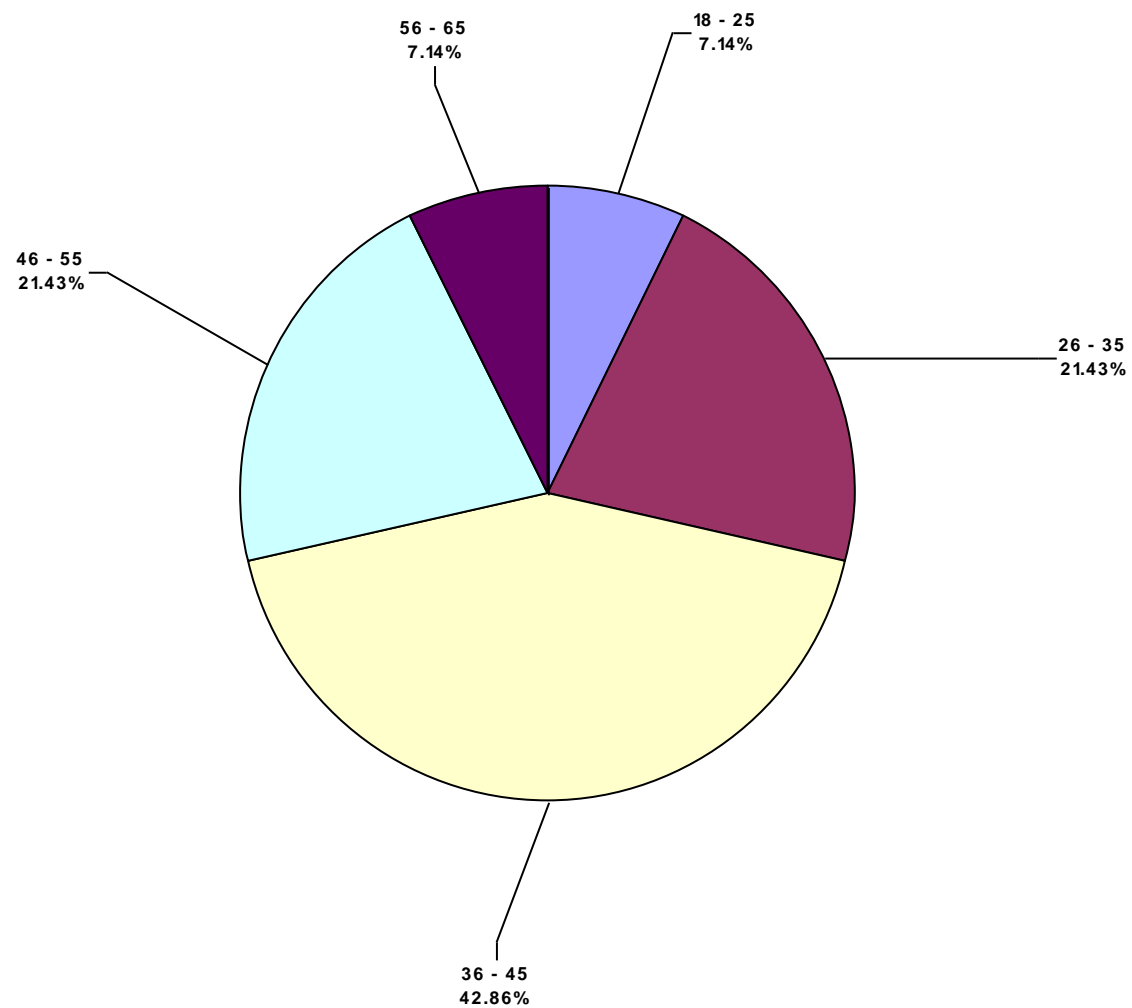
**European Water Total Lost Time Incidents by Time of Day (Chart 17)**  
Based on 18 Incidents



**European Water Total Recordable Incidents by Time of Day (Chart 18)**  
Based on 62 Incidents



**European Water Total Lost Time Incidents by Age (Chart 19)**  
Based on 14 Incidents



**European Water Total Recordable Incidents by Age (Chart 20)**  
Based on 43 Incidents

