



IADC

**IADC
ISP PROGRAM**

2016



**Summary of Occupational
Incidents
(US Land Totals)**

Issued 1 July 2017

Table of Contents

(Table of Contents is Hyperlinked, Just click on Topic & go)

IADC 2016 US LAND TOTALS (TABLE 1).....	1
<i>US Land Total Incidence Rates vs Man-hours (Figure 1)</i>	1
IADC 2016 US LAND CHARTS	2
<i>US Land Total Lost Time Incidents by Month (Chart 1)</i>	2
<i>US Land Total Recordable Incidents by Month (Chart 2)</i>	3
<i>US Land Total Lost Time Incidents by Occupation (Chart 3)</i>	4
<i>US Land Total Recordable Incidents by Occupation (Chart 4)</i>	5
<i>US Land Total Lost Time Incidents by Body Part (Chart 5)</i>	6
<i>US Land Total Recordable Incidents by Body Part (Chart 6)</i>	7
<i>US Land Total Lost Time Incidents by Incident Type (Chart 7)</i>	8
<i>US Land Total Recordable Incidents by Incident Type (Chart 8)</i>	9
<i>US Land Total Lost Time Incidents by Equipment (Chart 9)</i>	10
<i>US Land Total Recordable Incidents by Equipment (Chart 10)</i>	11
<i>US Land Total Lost Time Incidents by Operation (Chart 11)</i>	12
<i>US Land Total Recordable Incidents by Operation (Chart 12)</i>	13
<i>US Land Total Lost Time Incidents by Location (Chart 13)</i>	14
<i>US Land Total Recordable Incidents by Location (Chart 14)</i>	15
<i>US Land Total Lost Time Incidents by Time in Service (Chart 15)</i>	16
<i>US Land Total Recordable Incidents by Time in Service (Chart 16)</i>	17
<i>US Land Total Lost Time Incidents by Time of Day (Chart 17)</i>	18
<i>US Land Total Recordable Incidents by Time of Day (Chart 18)</i>	19
<i>US Land Total Lost Time Incidents by Age (Chart 19)</i>	20
<i>US Land Total Recordable Incidents by Age (Chart 20)</i>	21

IADC 2016 US Land Totals (Table 1)

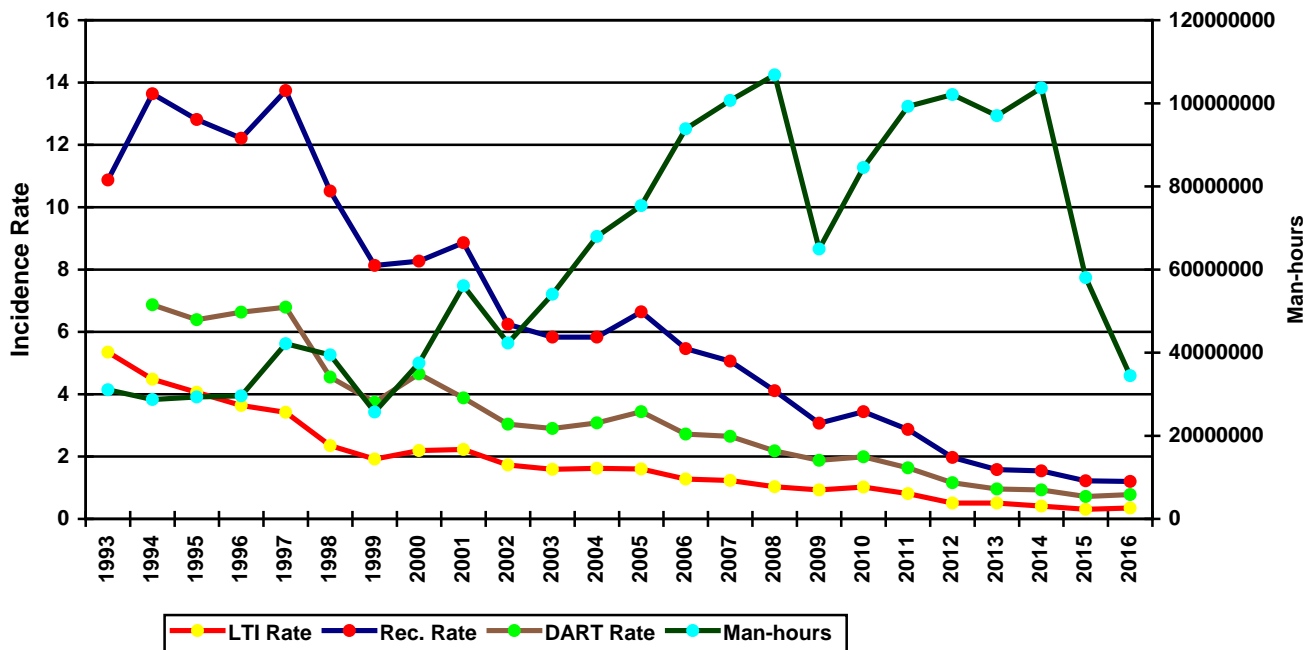
	<u>Total</u>
Total Man-hours	34,454,892
Total Medical Treatment Incidents	72
Total Restricted Work Incidents	74
Total Lost Time Incidents	57
Total Fatalities	3
Total Recordables	206
MTO Incidence Rate	0.42
RWC Incidence Rate	0.43
LTI Incidence Rate	0.35
LTI Frequency Rate	1.74
DART Incidence Rate	0.78
DART Frequency Rate	3.89
Recordable Incidence Rate	1.20
Recordable Frequency Rate	5.98

Companies Reporting: Land – 31

Medical Treatment Incidence Rate = MTOs X 200,000
 Restricted Work Incidence Rate = RWCs X 200,000
 Lost Time Incidence Rate = LTIs + FTLs X 200,000
 DART Incidence Rate = LTIs + RWC X 200,000
 Recordable Incidence Rate = RCRD X 200,000

Lost Time Frequency Rate = LTIs +FTLs X 1,000,000
 DART Frequency Rate = LTIs + RWC X 1,000,000
 Recordable Frequency Rate = RCRD X 1,000,000

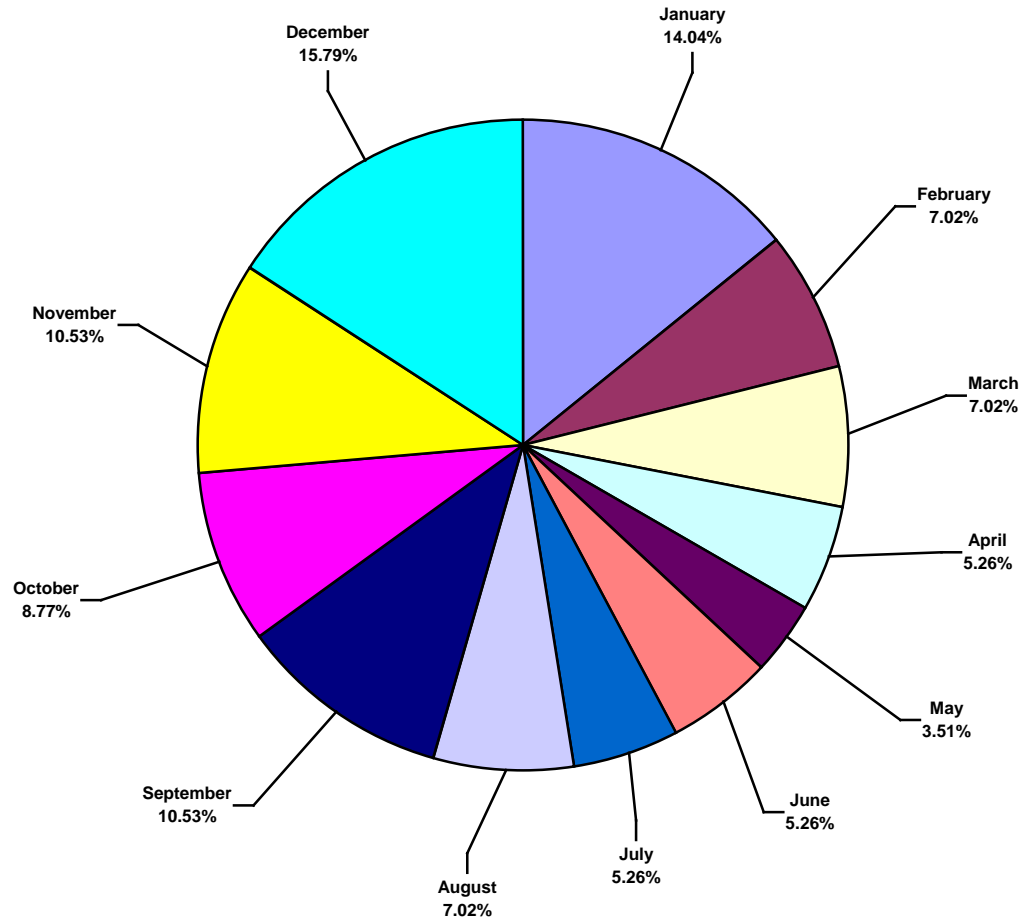
US Land Total Incidence Rates vs Man-hours (Figure 1)



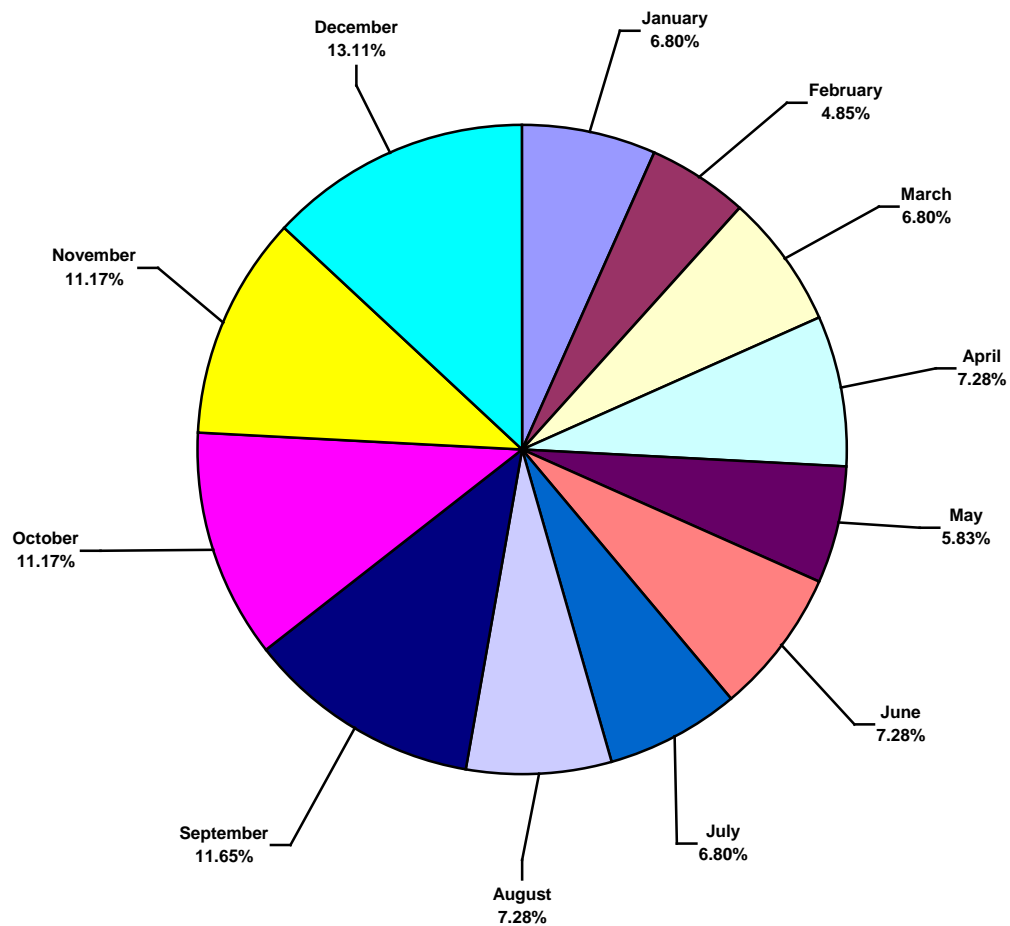
IADC 2016 US Land Charts

US Land Total Lost Time Incidents by Month (Chart 1)

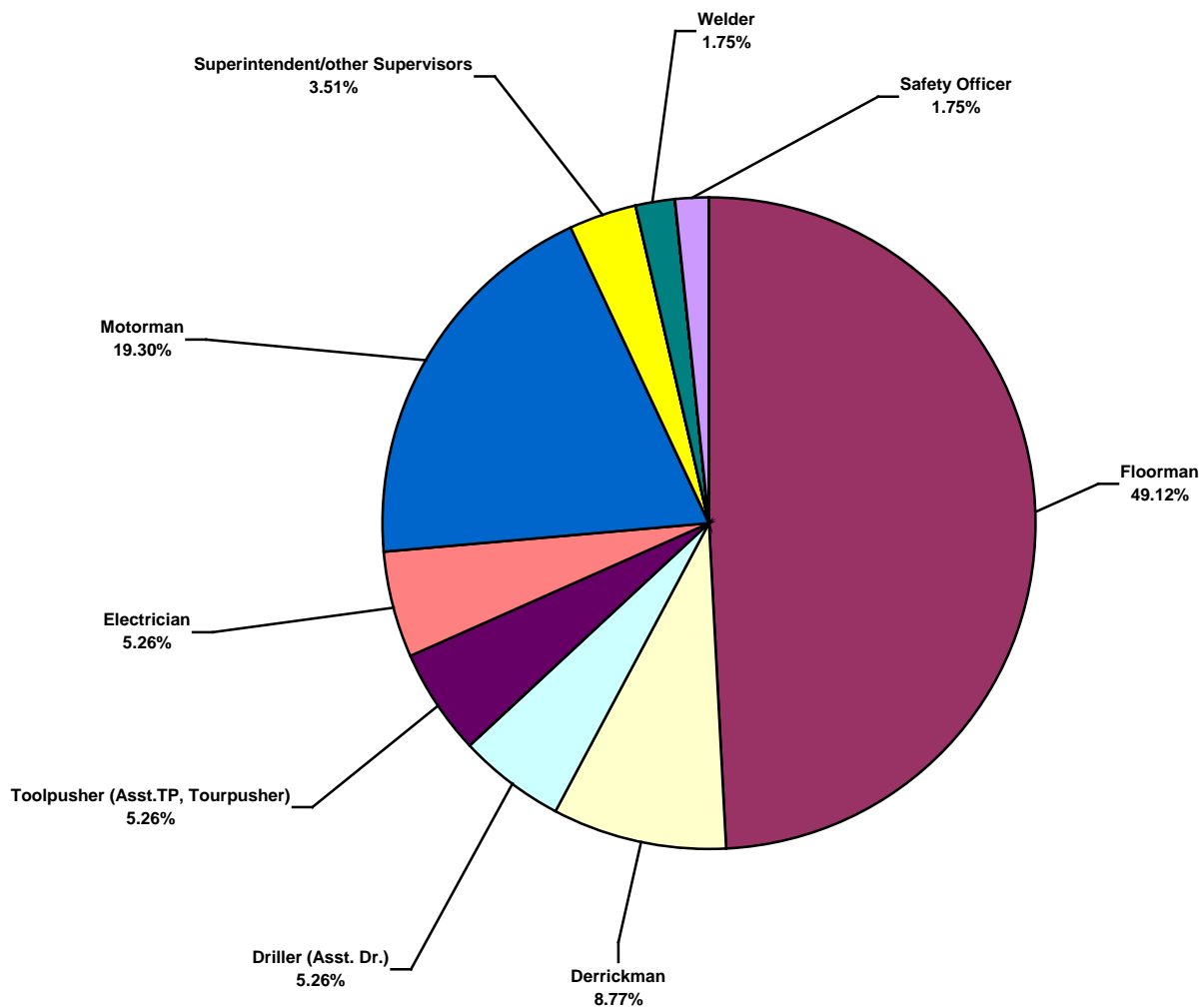
Based on 57 Incidents



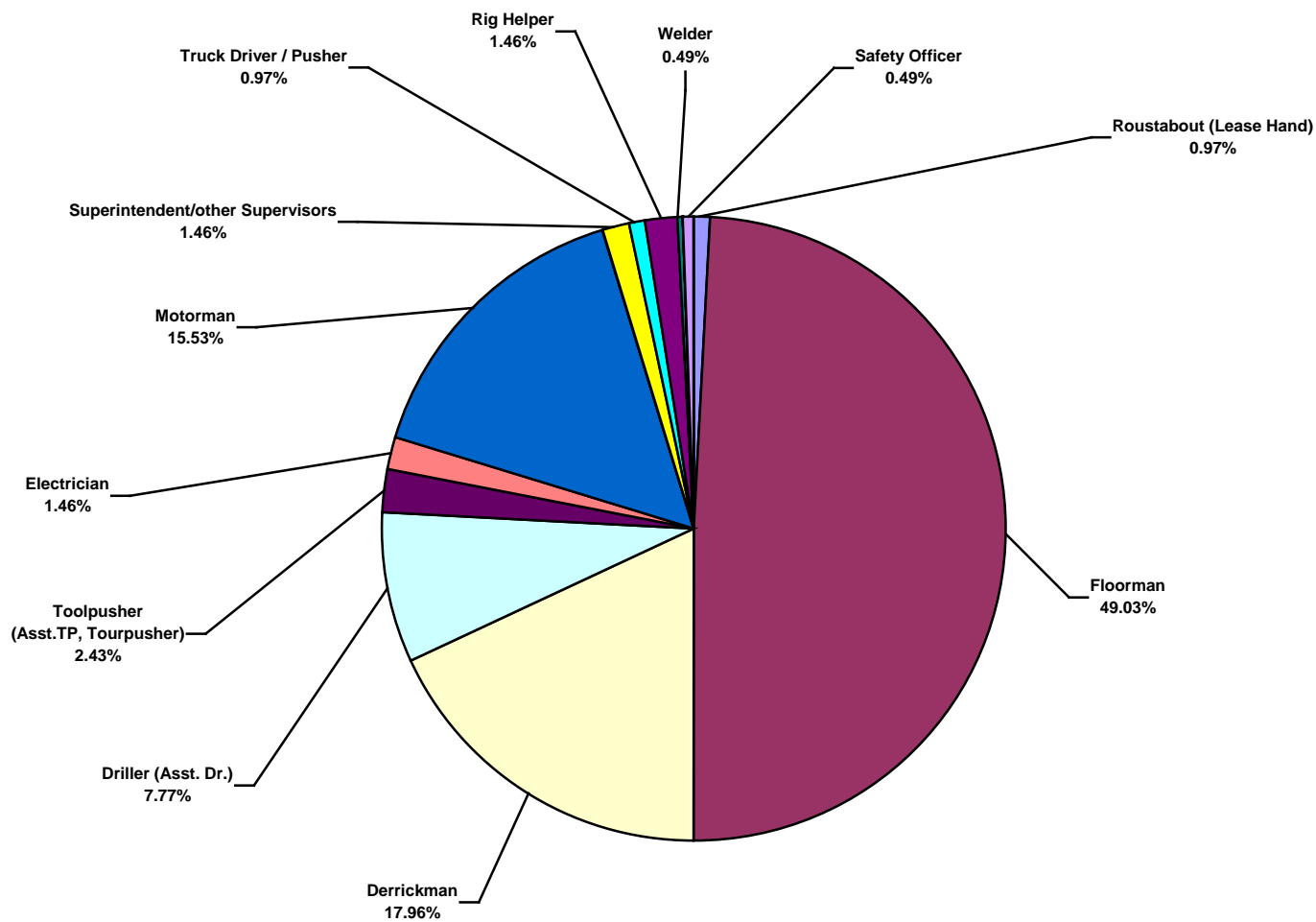
US Land Total Recordable Incidents by Month (Chart 2)
Based on 206 Incidents



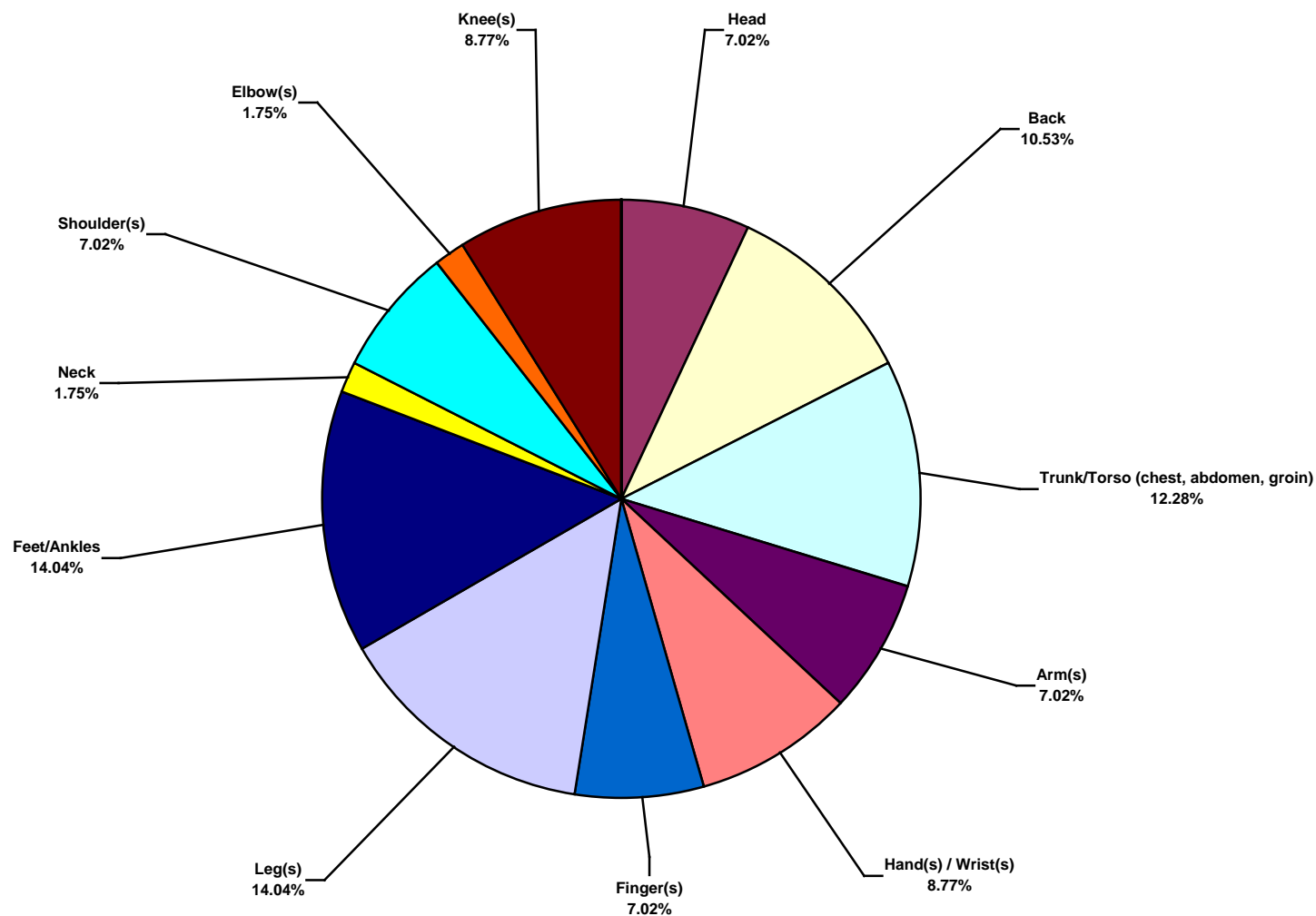
US Land Total Lost Time Incidents by Occupation (Chart 3)
Based on 57 Incidents



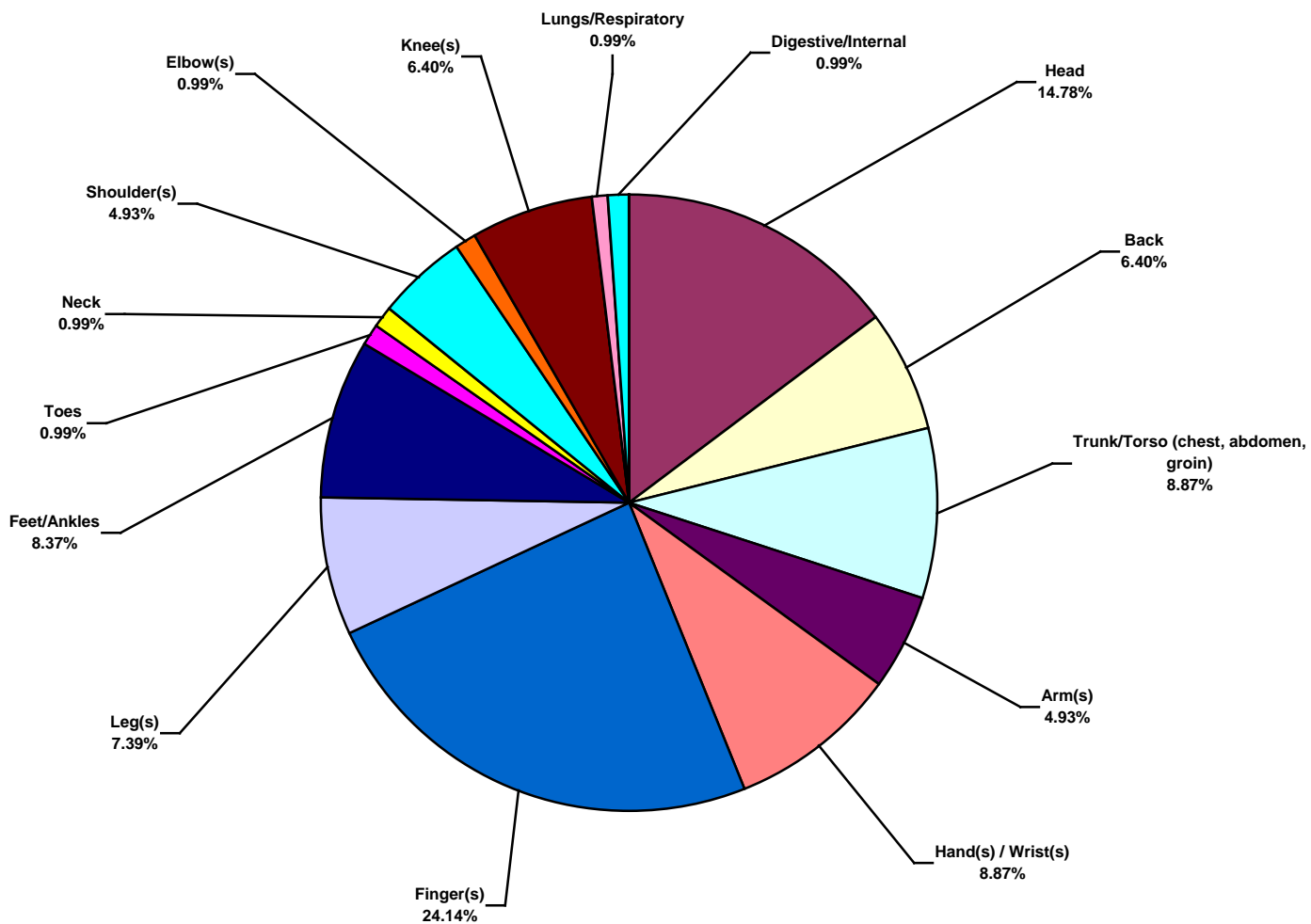
US Land Total Recordable Incidents by Occupation (Chart 4)
Based on 206 Incidents



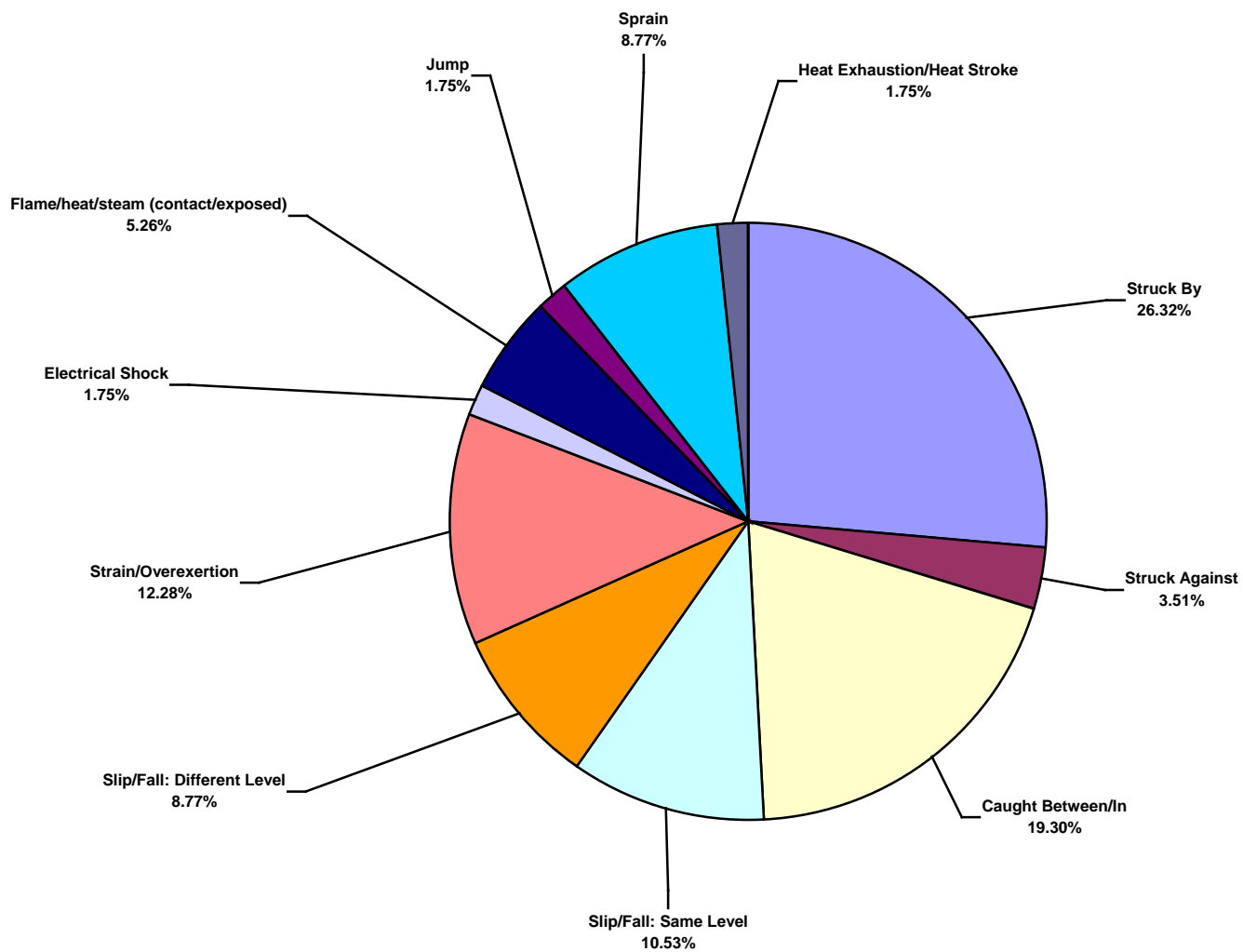
US Land Total Lost Time Incidents by Body Part (Chart 5)
Based on 57 Incidents



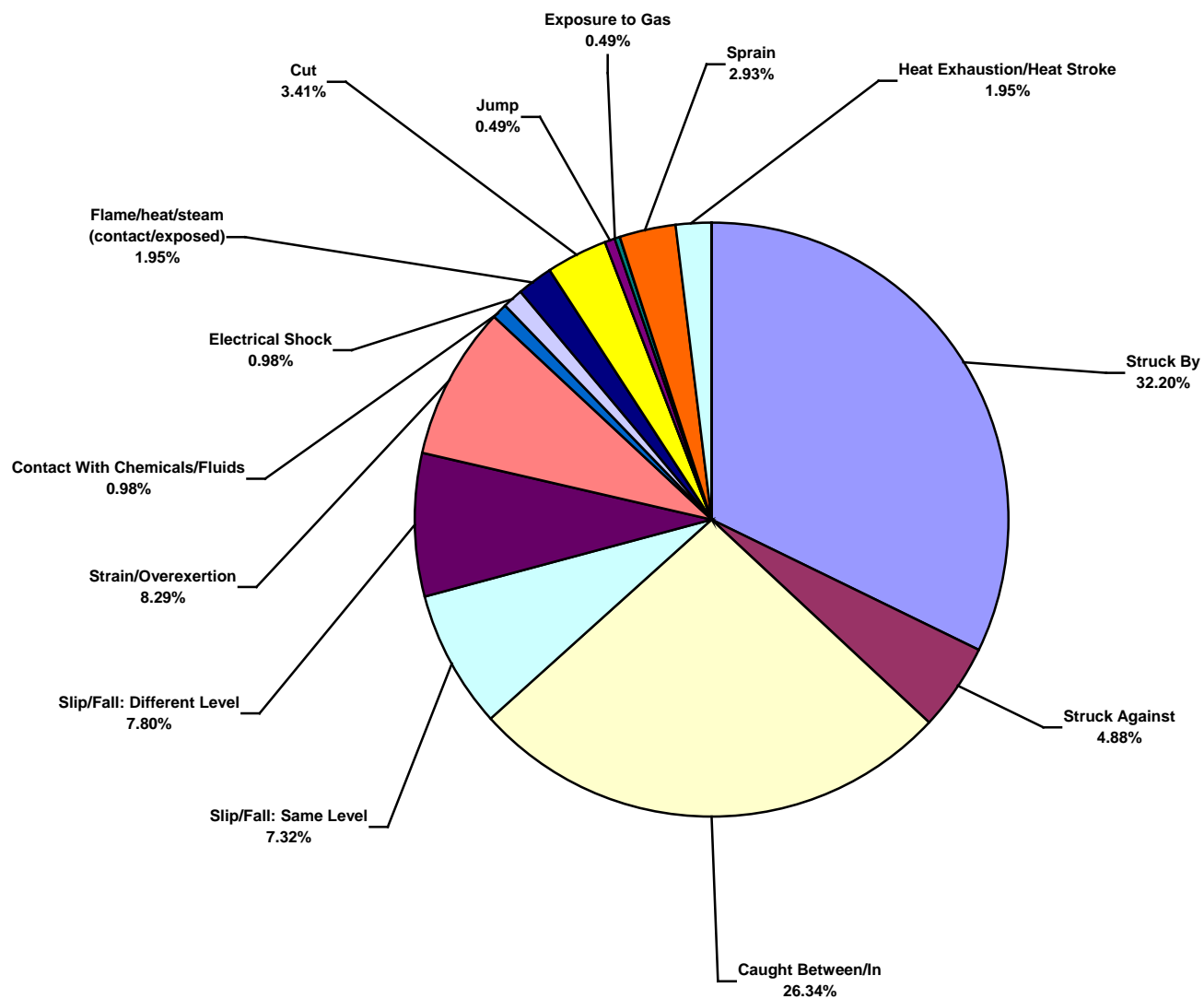
US Land Total Recordable Incidents by Body Part (Chart 6)
Based on 203 Incidents



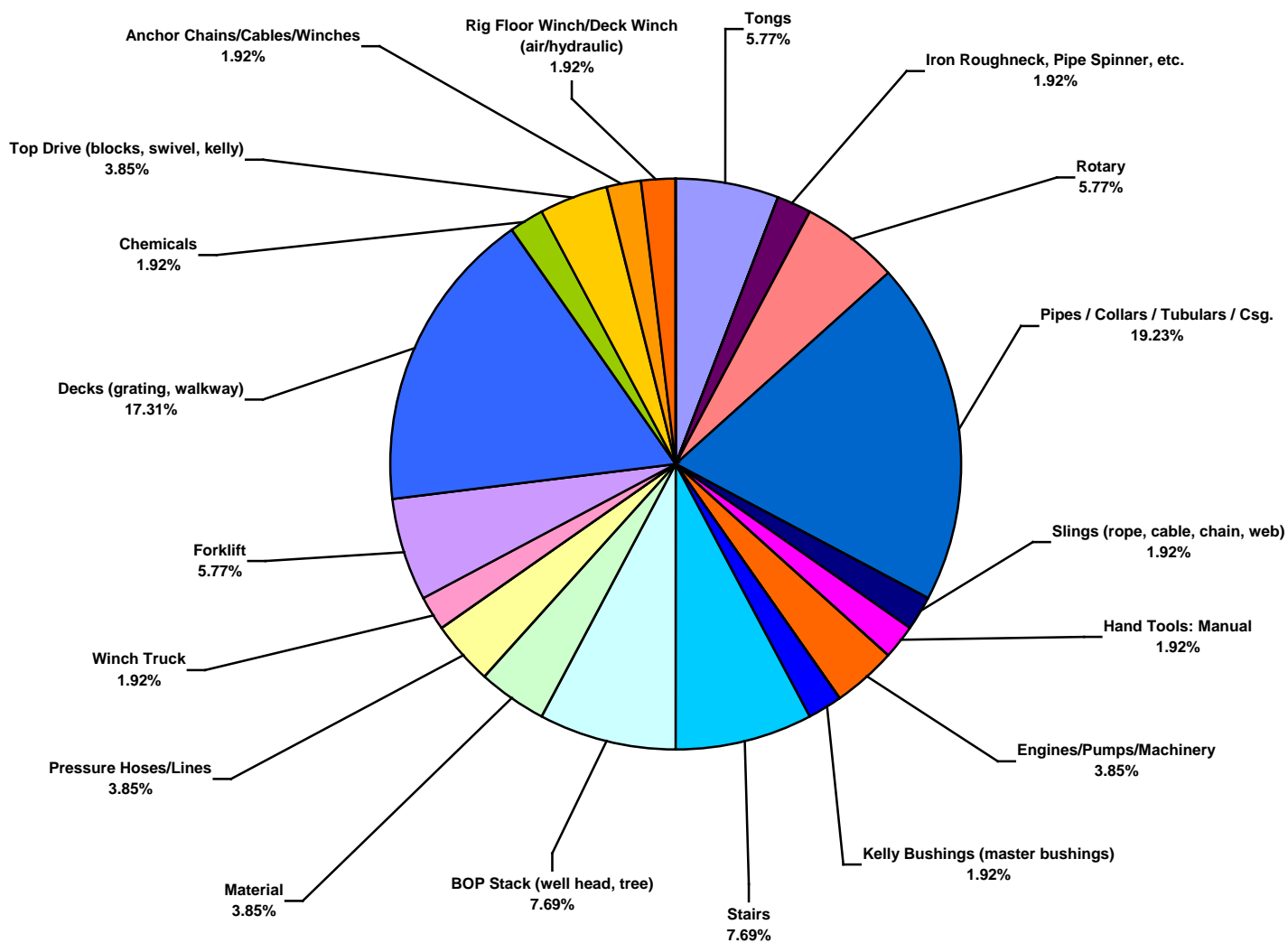
US Land Total Lost Time Incidents by Incident Type (Chart 7)
Based on 57 Incidents



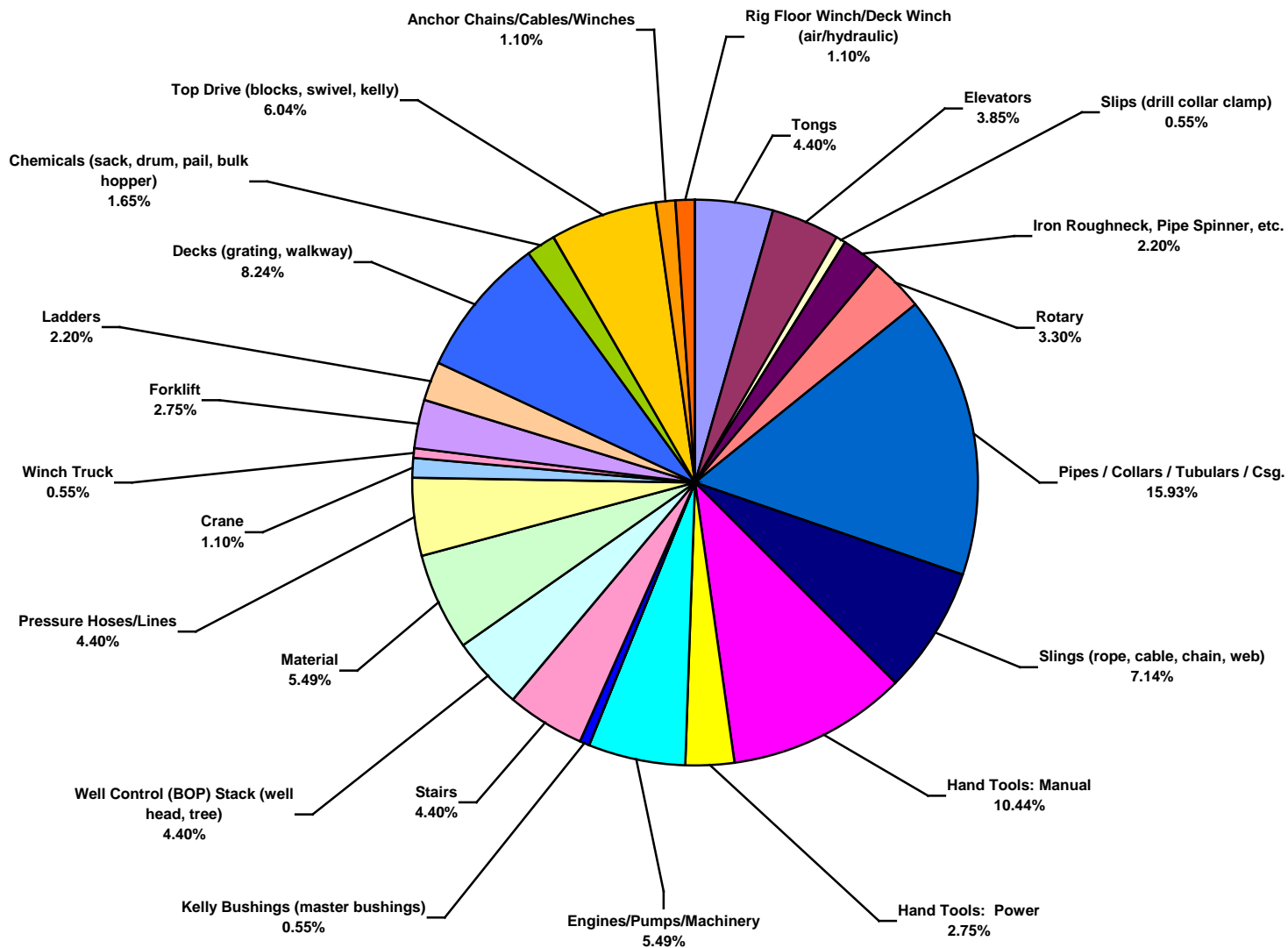
US Land Total Recordable Incidents by Incident Type (Chart 8)
Based on 205 Incidents



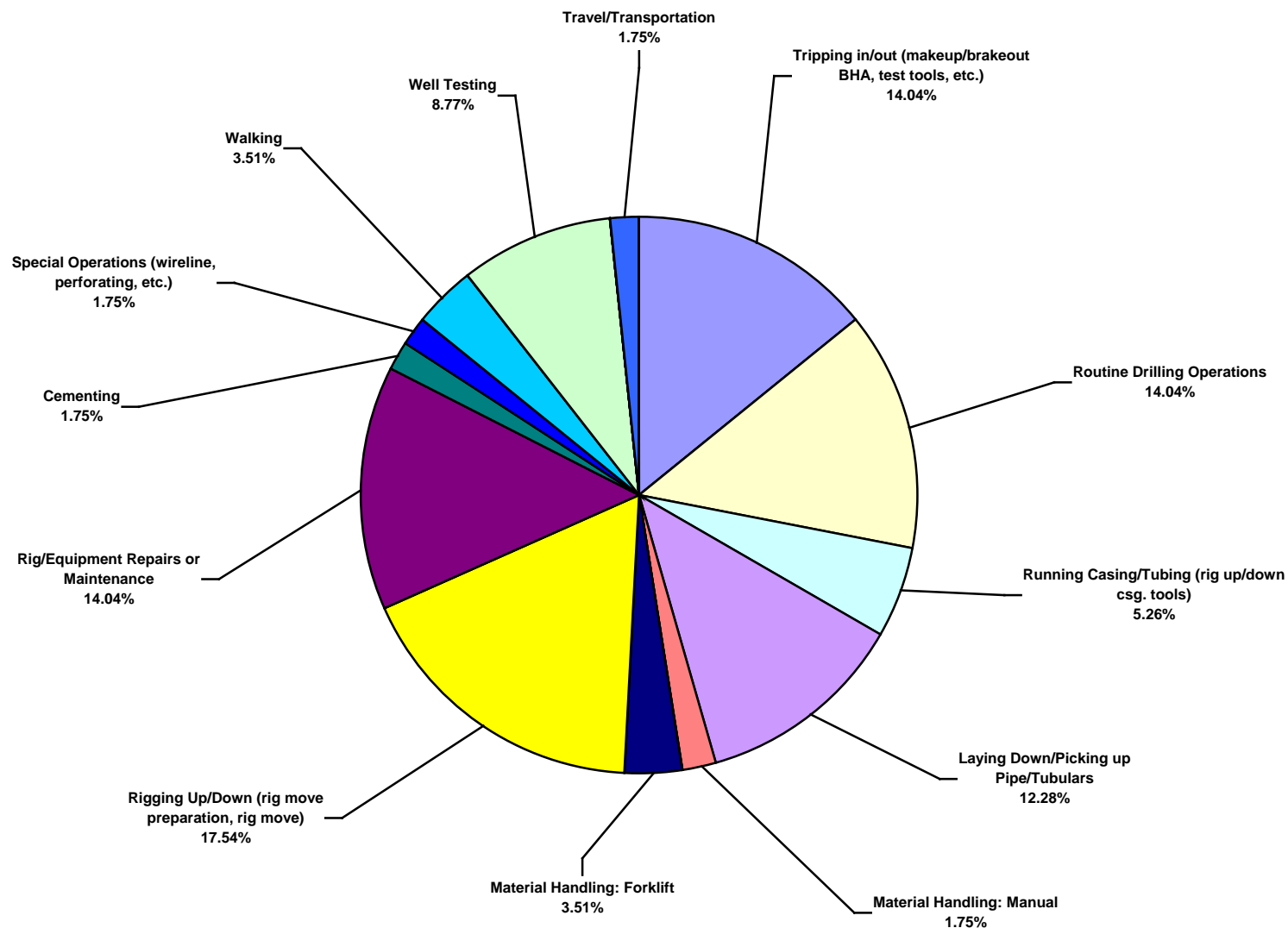
US Land Total Lost Time Incidents by Equipment (Chart 9)
Based on 52 Incidents



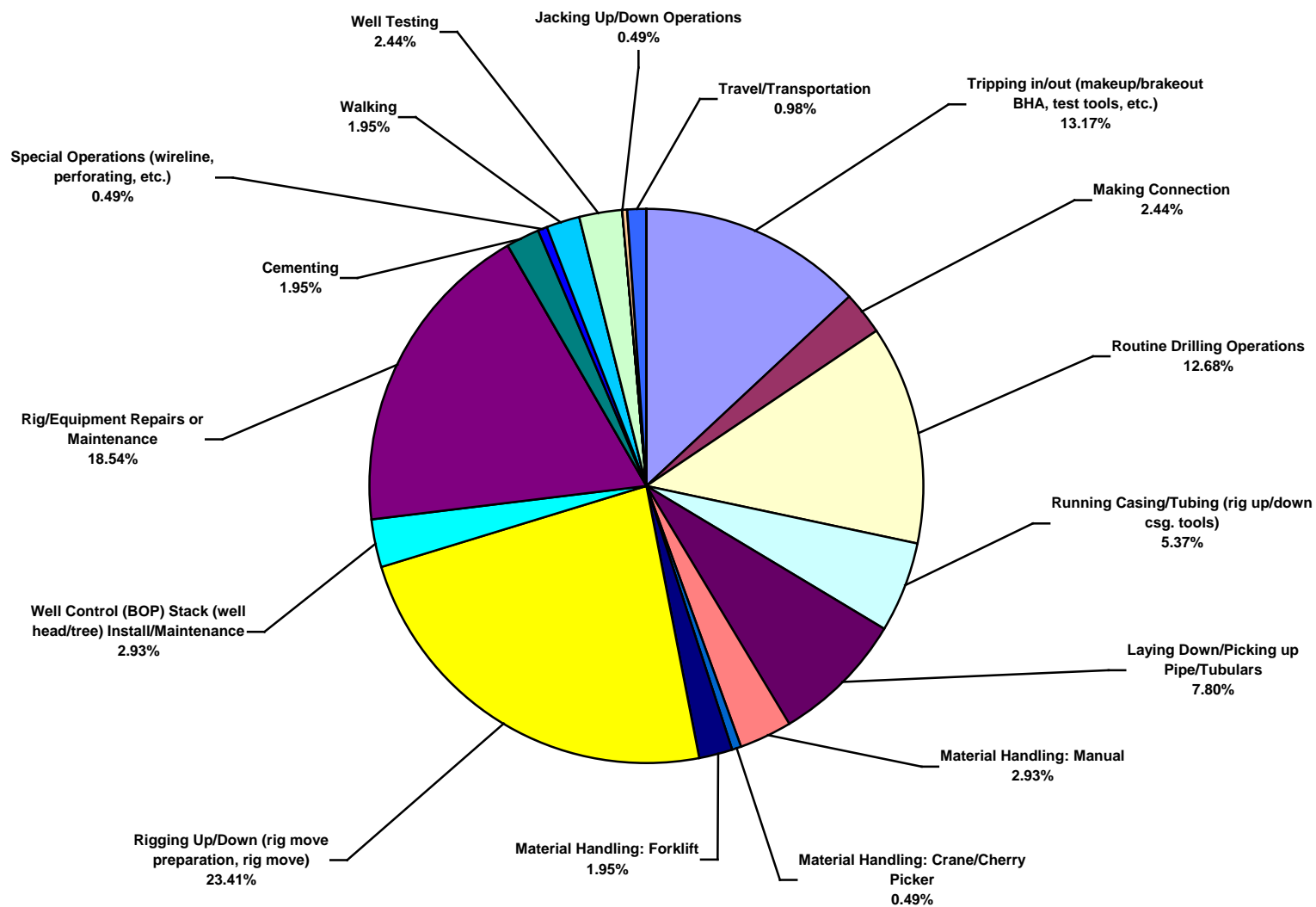
US Land Total Recordable Incidents by Equipment (Chart 10)
Based on 182 Incidents



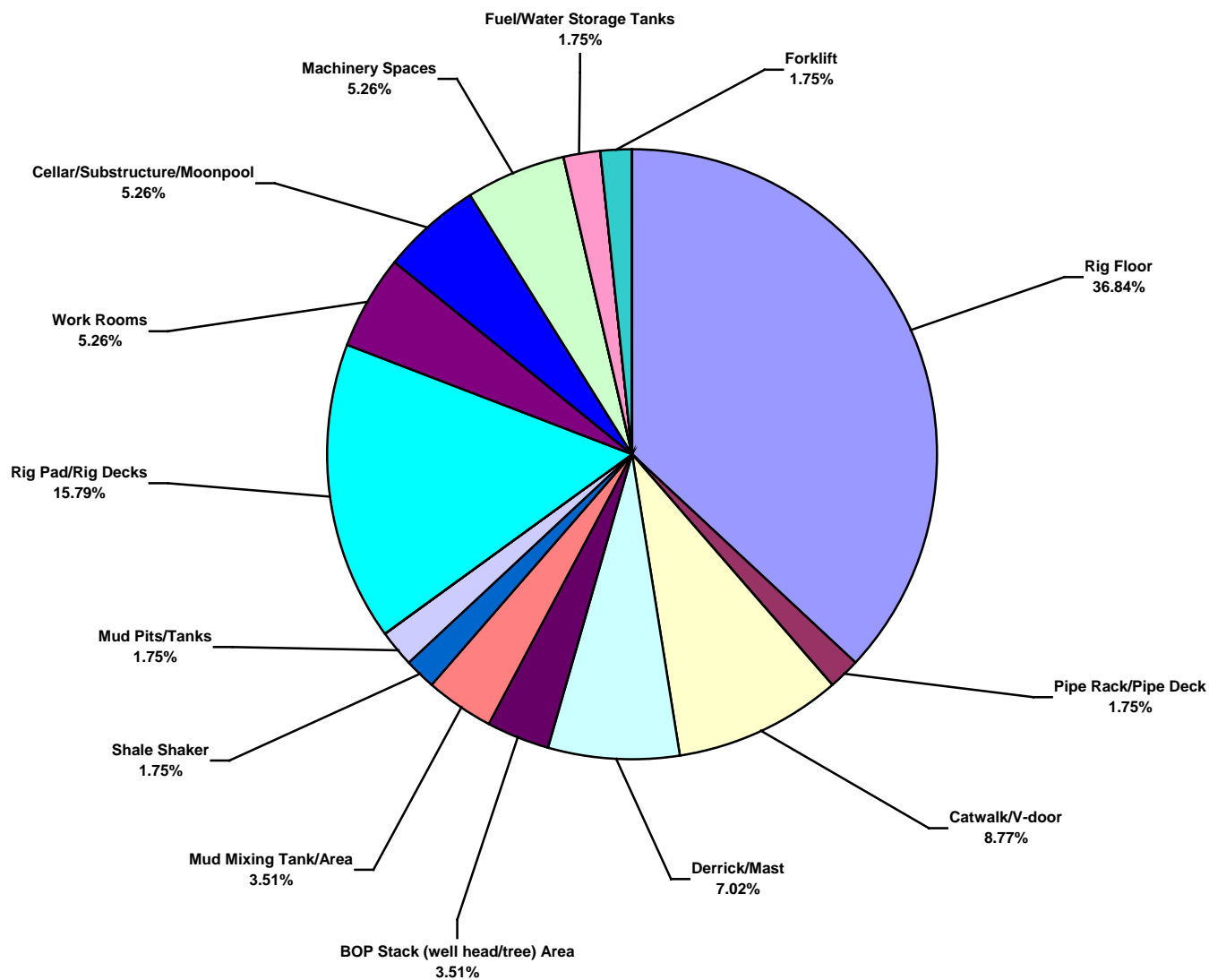
US Land Total Lost Time Incidents by Operation (Chart 11)
Based on 57 Incidents



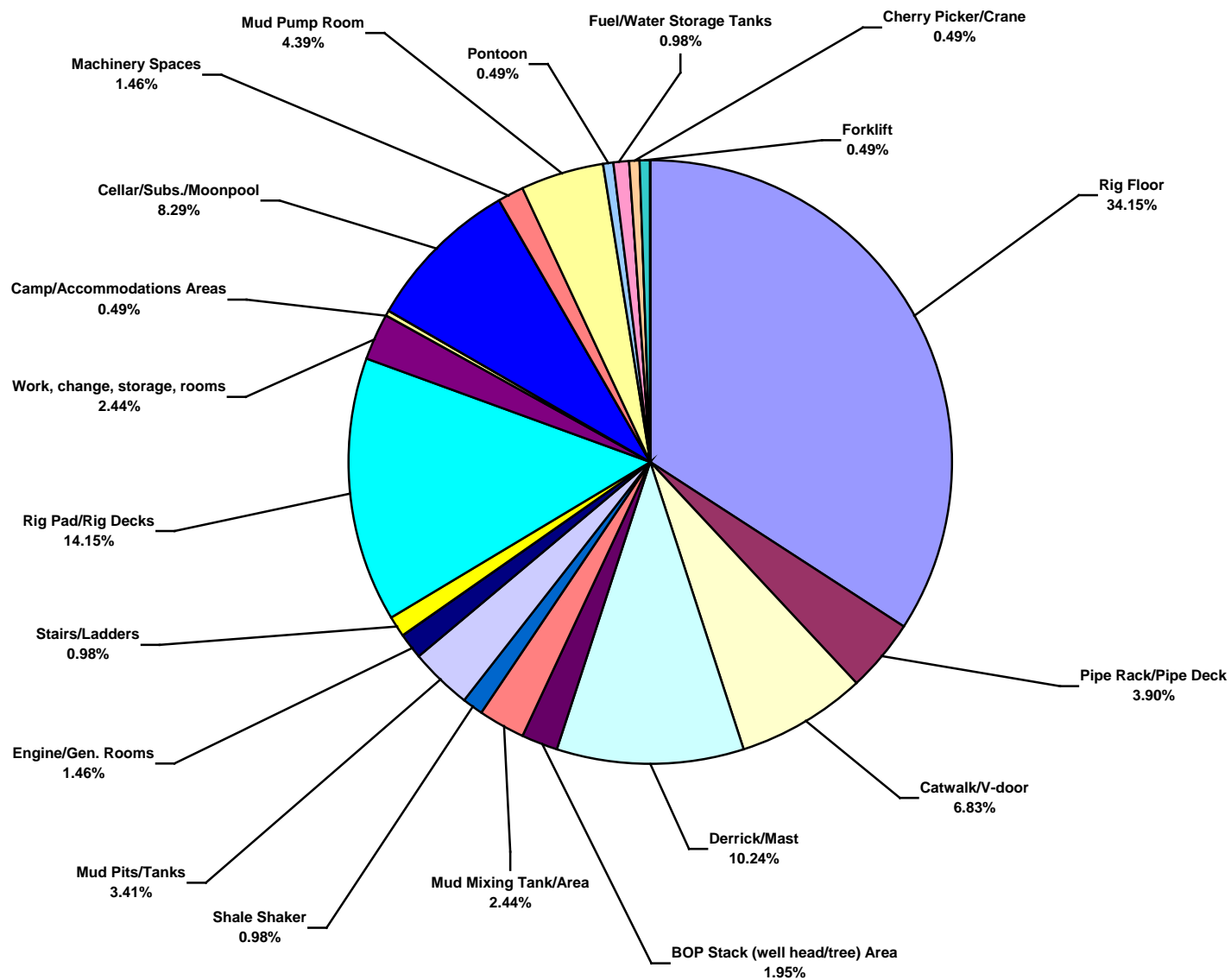
US Land Total Recordable Incidents by Operation (Chart 12)
Based on 205 Incidents



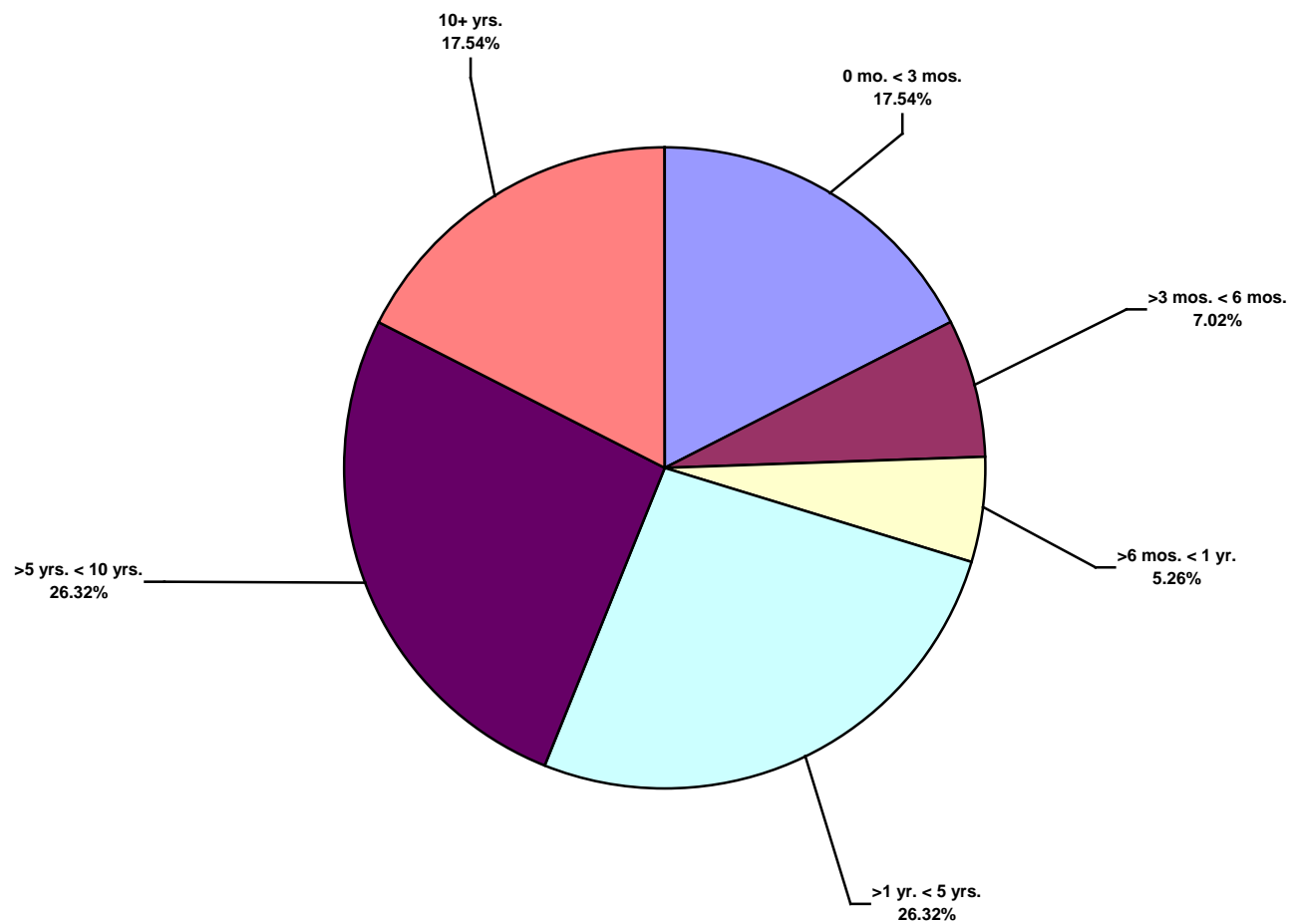
US Land Total Lost Time Incidents by Location (Chart 13)
Based on 57 Incidents



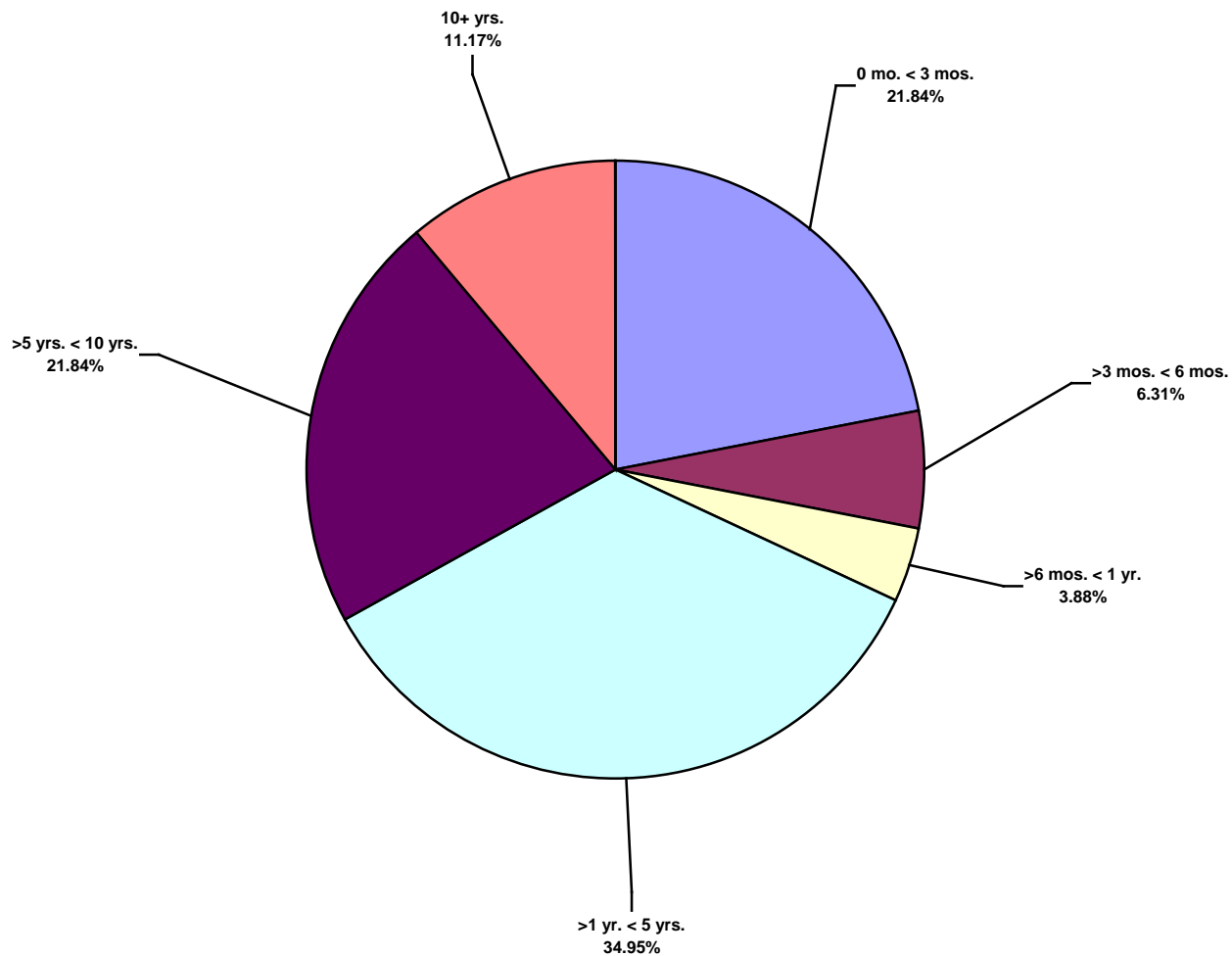
US Land Total Recordable Incidents by Location (Chart 14)
Based on 205 Incidents



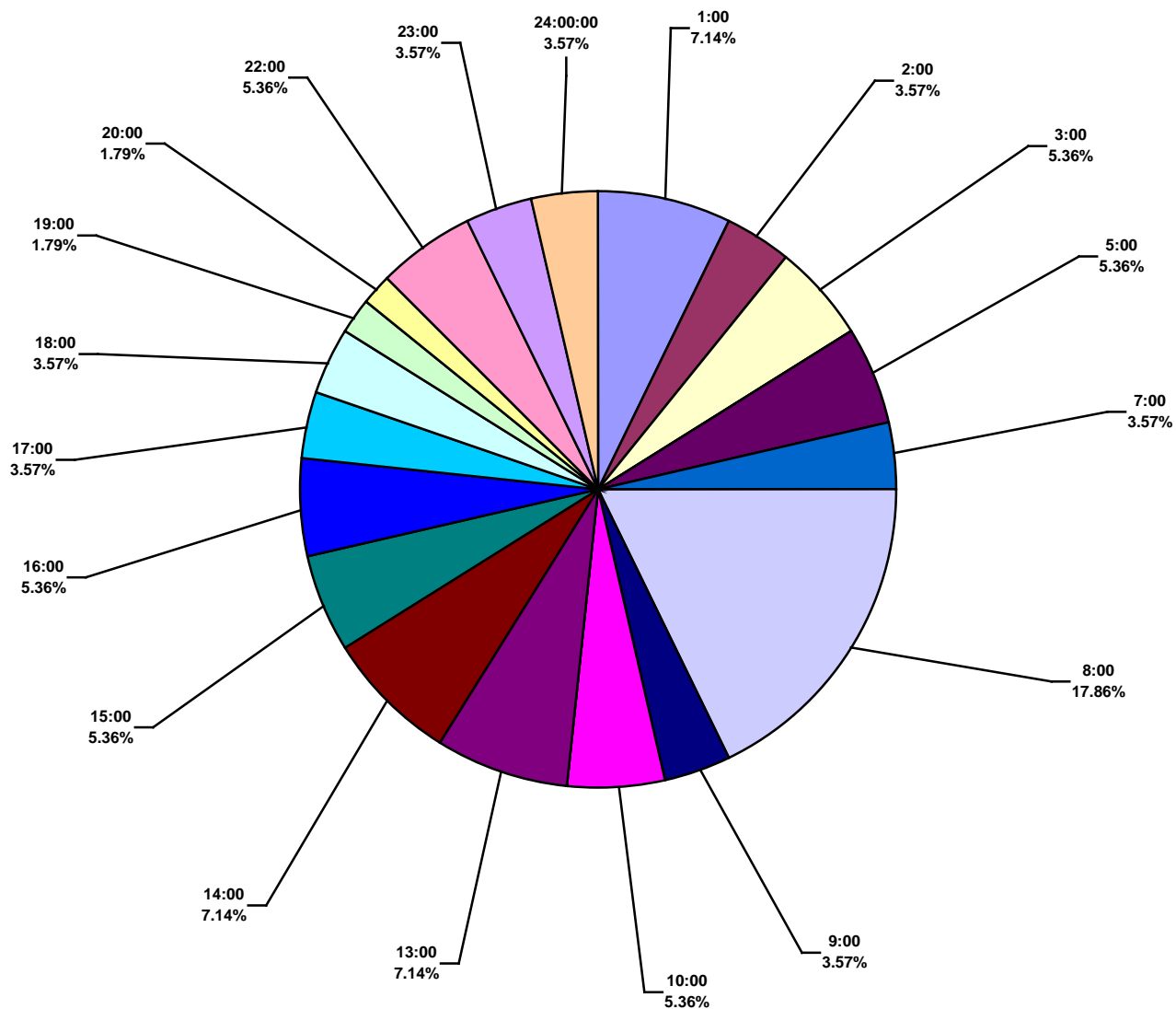
US Land Total Lost Time Incidents by Time in Service (Chart 15)
Based on 57 Incidents



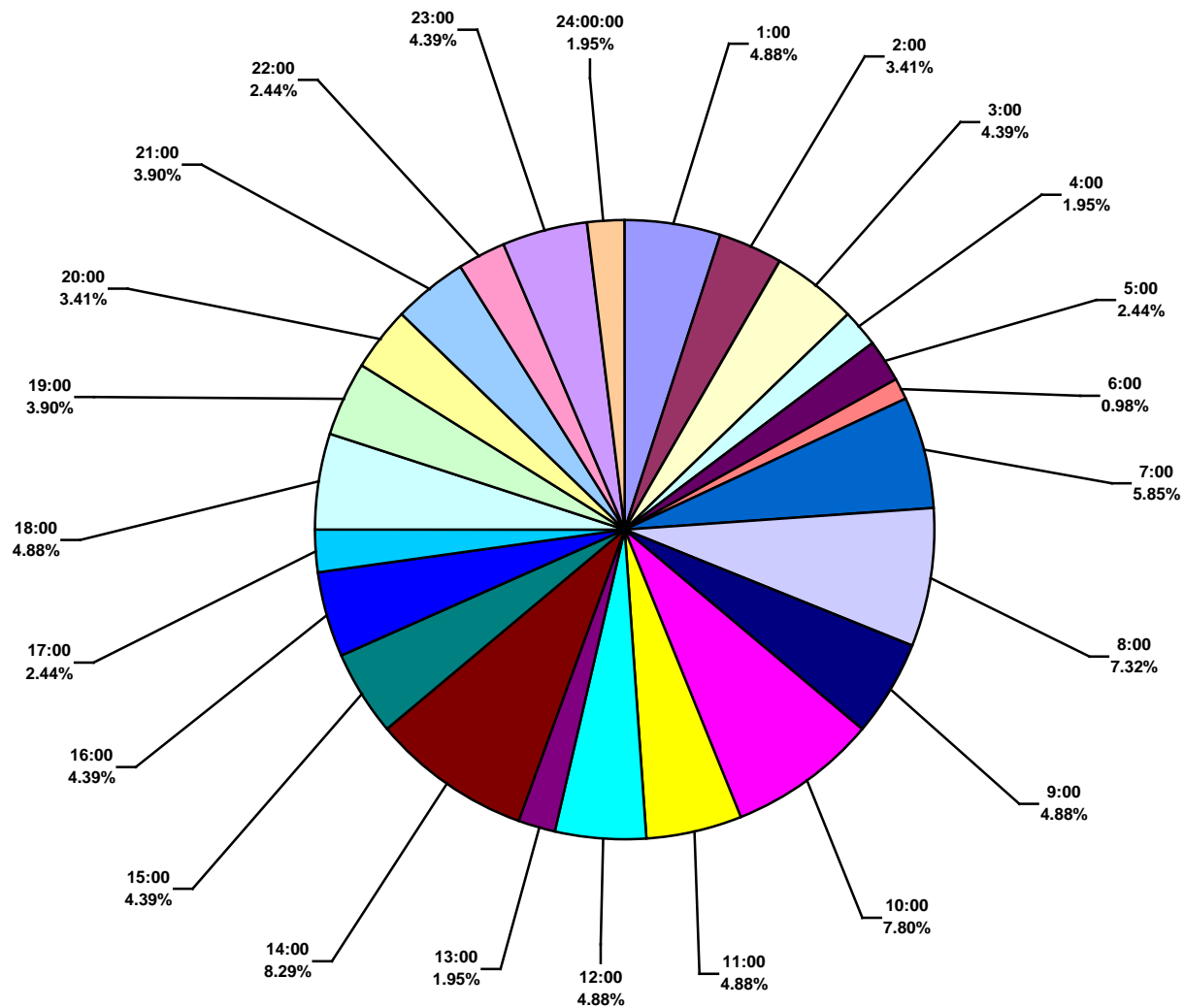
US Land Total Recordable Incidents by Time in Service (Chart 16)
Based on 206 Incidents



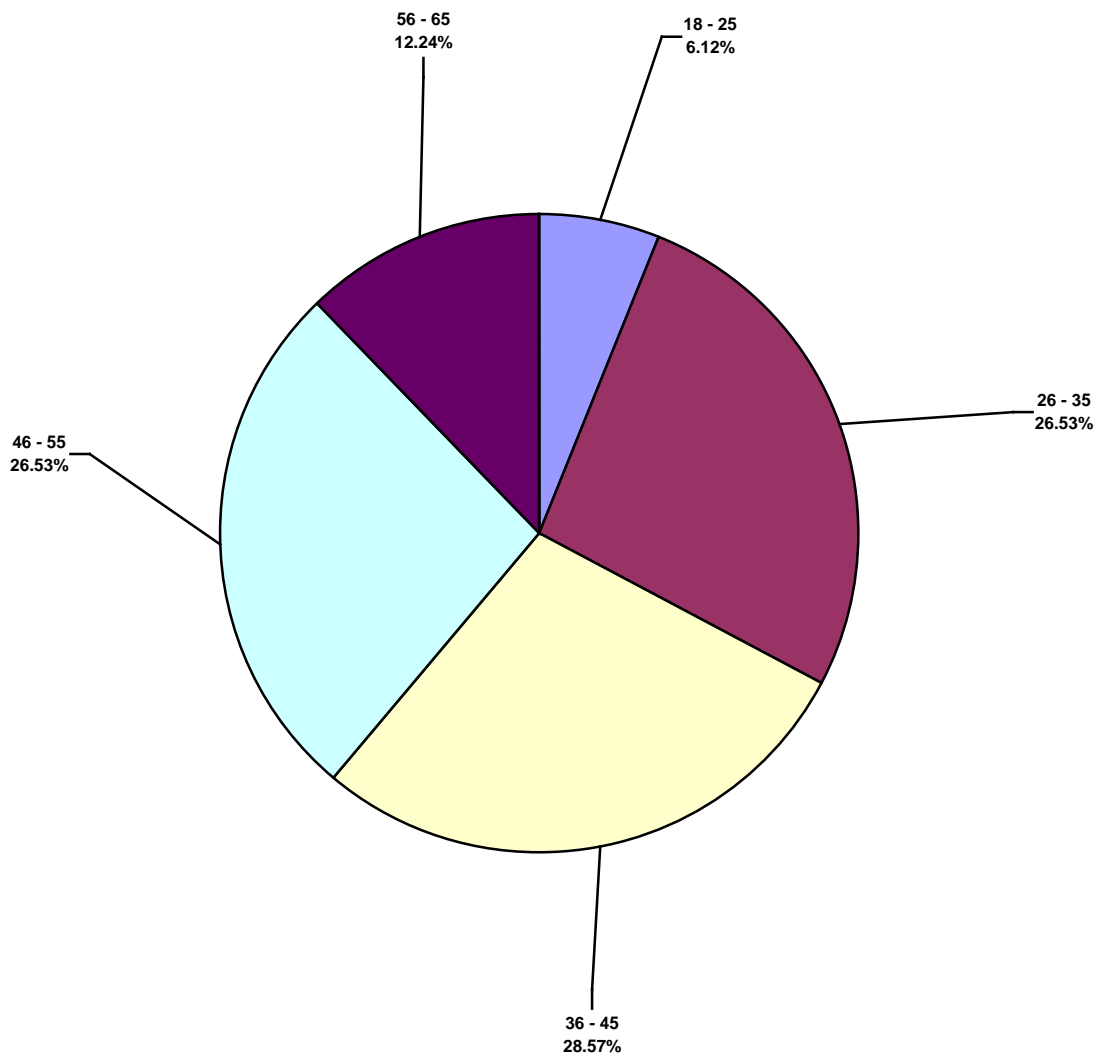
US Land Total Lost Time Incidents by Time of Day (Chart 17)
Based on 56 Incidents



US Land Total Recordable Incidents by Time of Day (Chart 18)
Based on 205 Incidents



US Land Total Lost Time Incidents by Age (Chart 19)
Based on 49 Incidents



US Land Total Recordable Incidents by Age (Chart 20)
Based on 168 Incidents

