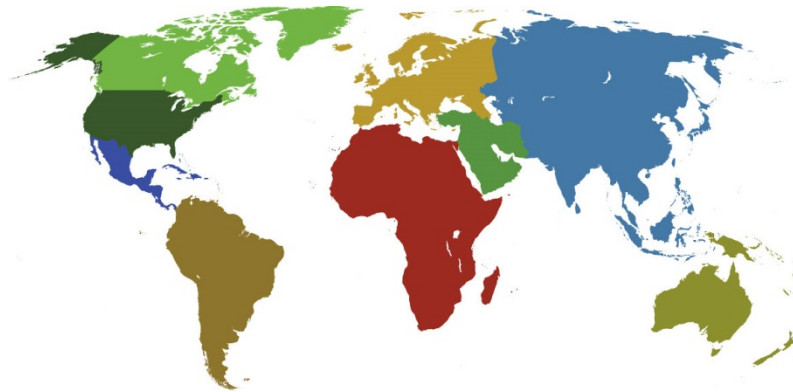




IADC

**IADC
ISP PROGRAM**

2016



**Summary of Occupational
Incidents
(Middle East Land Totals)**

Issued 1 July 2017

Table of Contents

(Table of Contents is Hyperlinked, Just click on Topic & go)

IADC 2016 MIDDLE EAST LAND TOTALS (TABLE 1)	1
<i>Middle East Land Total LTI & Recordable Incidence Rates vs Man-hours (Figure 1)</i>	1
IADC 2016 MIDDLE EAST LAND CHARTS	2
<i>Middle East Land Total Lost Time Incidents by Month (Chart 1)</i>	2
<i>Middle East Land Total Recordable Incidents by Month (Chart 2)</i>	3
<i>Middle East Land Total Lost Time Incidents by Occupation (Chart 3)</i>	4
<i>Middle East Land Total Recordable Incidents by Occupation (Chart 4)</i>	5
<i>Middle East Land Total Lost Time Incidents by Body Part (Chart 5)</i>	6
<i>Middle East Land Total Recordable Incidents by Body Part (Chart 6)</i>	7
<i>Middle East Land Total Lost Time Incidents by Incident Type (Chart 7)</i>	8
<i>Middle East Land Total Recordable Incidents by Incident Type (Chart 8)</i>	9
<i>Middle East Land Total Lost Time Incidents by Equipment (Chart 9)</i>	10
<i>Middle East Land Total Recordable Incidents by Equipment (Chart 10)</i>	11
<i>Middle East Land Total Lost Time Incidents by Operation (Chart 11)</i>	12
<i>Middle East Land Total Recordable Incidents by Operation (Chart 12)</i>	13
<i>Middle East Land Total Lost Time Incidents by Location (Chart 13)</i>	14
<i>Middle East Land Total Recordable Incidents by Location (Chart 14)</i>	15
<i>Middle East Land Total Lost Time Incidents by Time in Service (Chart 15)</i>	16
<i>Middle East Land Total Recordable Incidents by Time in Service (Chart 16)</i>	17
<i>Middle East Land Total Lost Time Incidents by Time of Day (Chart 17)</i>	18
<i>Middle East Land Total Recordable Incidents by Time of Day (Chart 18)</i>	19
<i>Middle East Land Total Lost Time Incidents by Age (Chart 19)</i>	20
<i>Middle East Land Total Recordable Incidents by Age (Chart 20)</i>	21

IADC 2016 Middle East Land Totals (Table 1)

	<u>Total</u>
Total Man-hours	100,829,919
Total Medical Treatment Incidents	125
Total Restricted Work Incidents	56
Total Lost Time Incidents	62
Total Fatalities	3
Total Recordables	246
MTO Incidence Rate	0.25
RWC Incidence Rate	0.11
LTI Incidence Rate	0.13
LTI Frequency Rate	0.64
DART Incidence Rate	0.24
DART Frequency Rate	1.20
Recordable Incidence Rate	0.49
Recordable Frequency Rate	2.44

Companies Reporting: Land – 20

Medical Treatment Incidence Rate = MTOs X 200,000

Restricted Work Incidence Rate = RWCs X 200,000

Lost Time Incidence Rate = LTIs + FTLs X 200,000

DART Incidence Rate = LTIs + RWC X 200,000

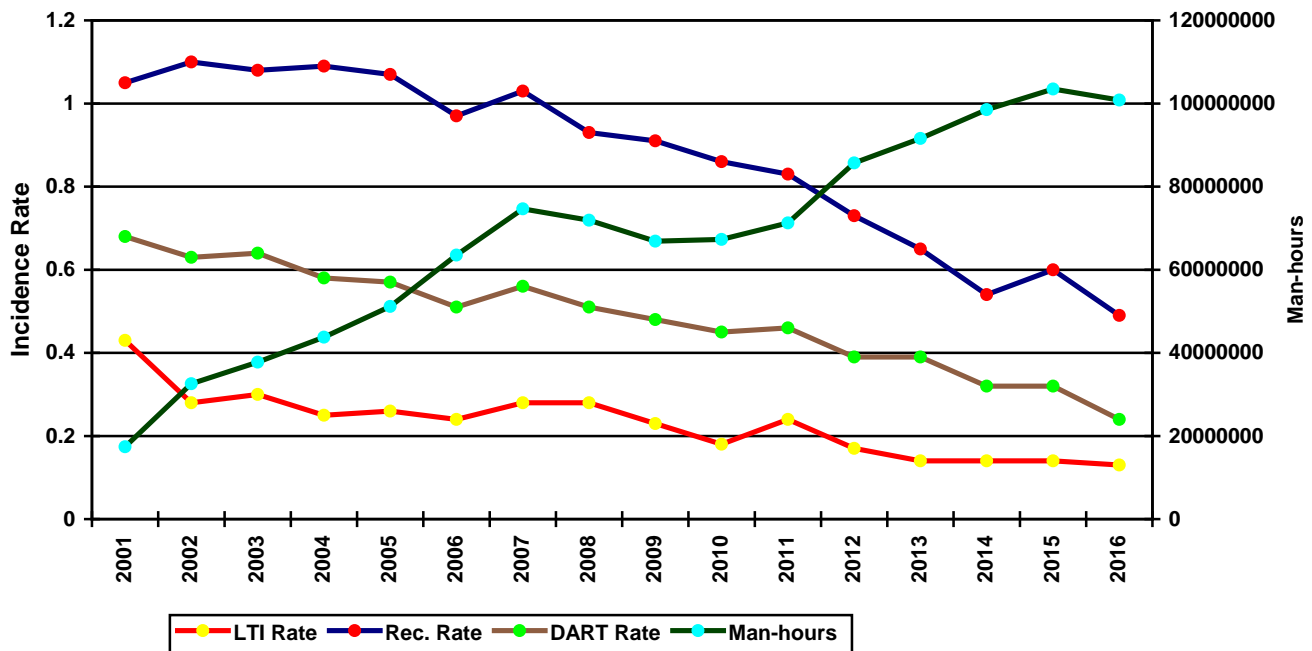
Recordable Incidence Rate = RCRD X 200,000

Lost Time Frequency Rate = LTIs +FTLs X 1,000,000

DART Frequency Rate = LTIs + RWC X 1,000,000

Recordable Frequency Rate = RCRD X 1,000,000

Middle East Land Total LTI & Recordable Incidence Rates vs Man-hours (Figure 1)

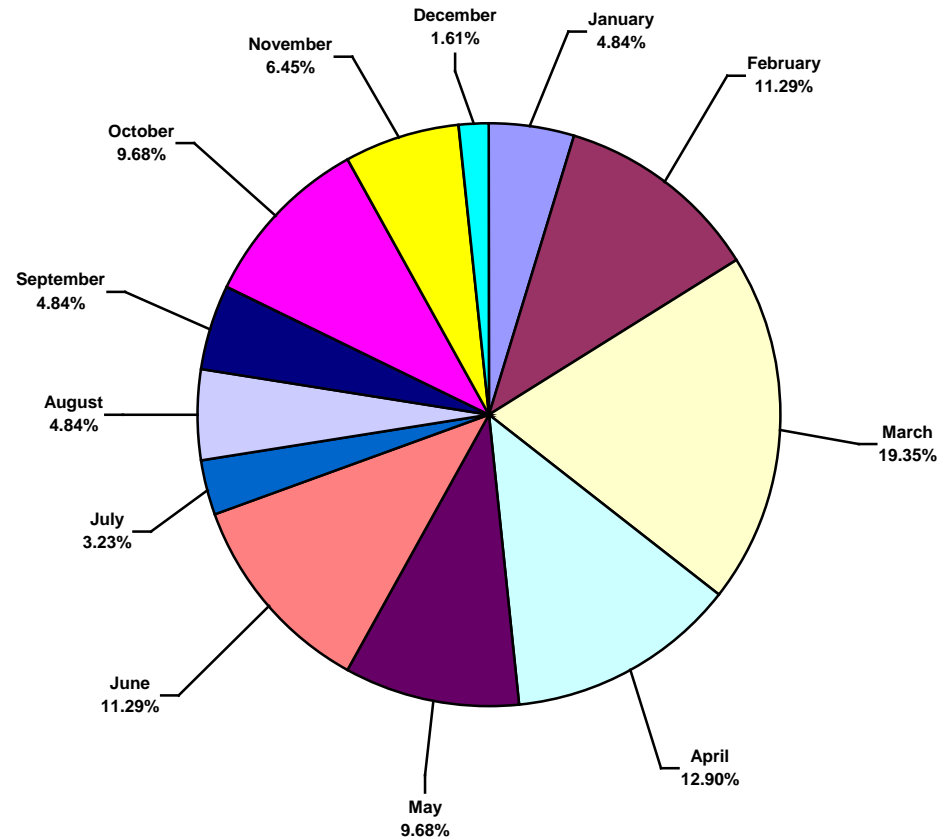




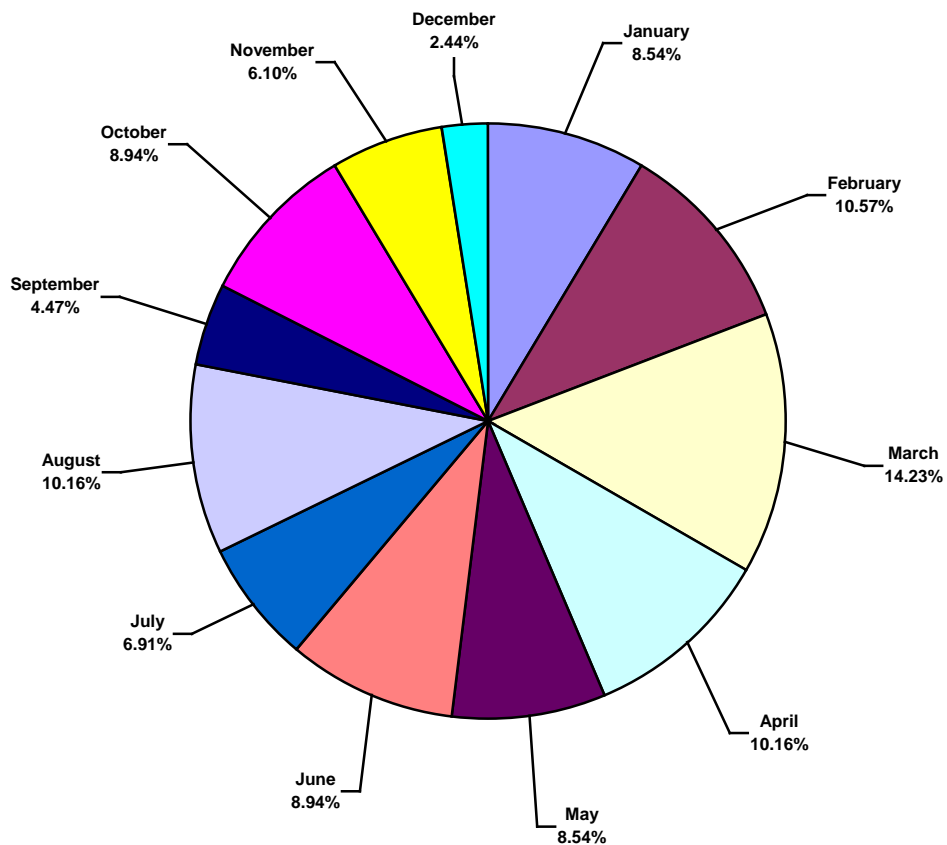
IADC 2016 Middle East Land Charts

Middle East Land Total Lost Time Incidents by Month (Chart 1)

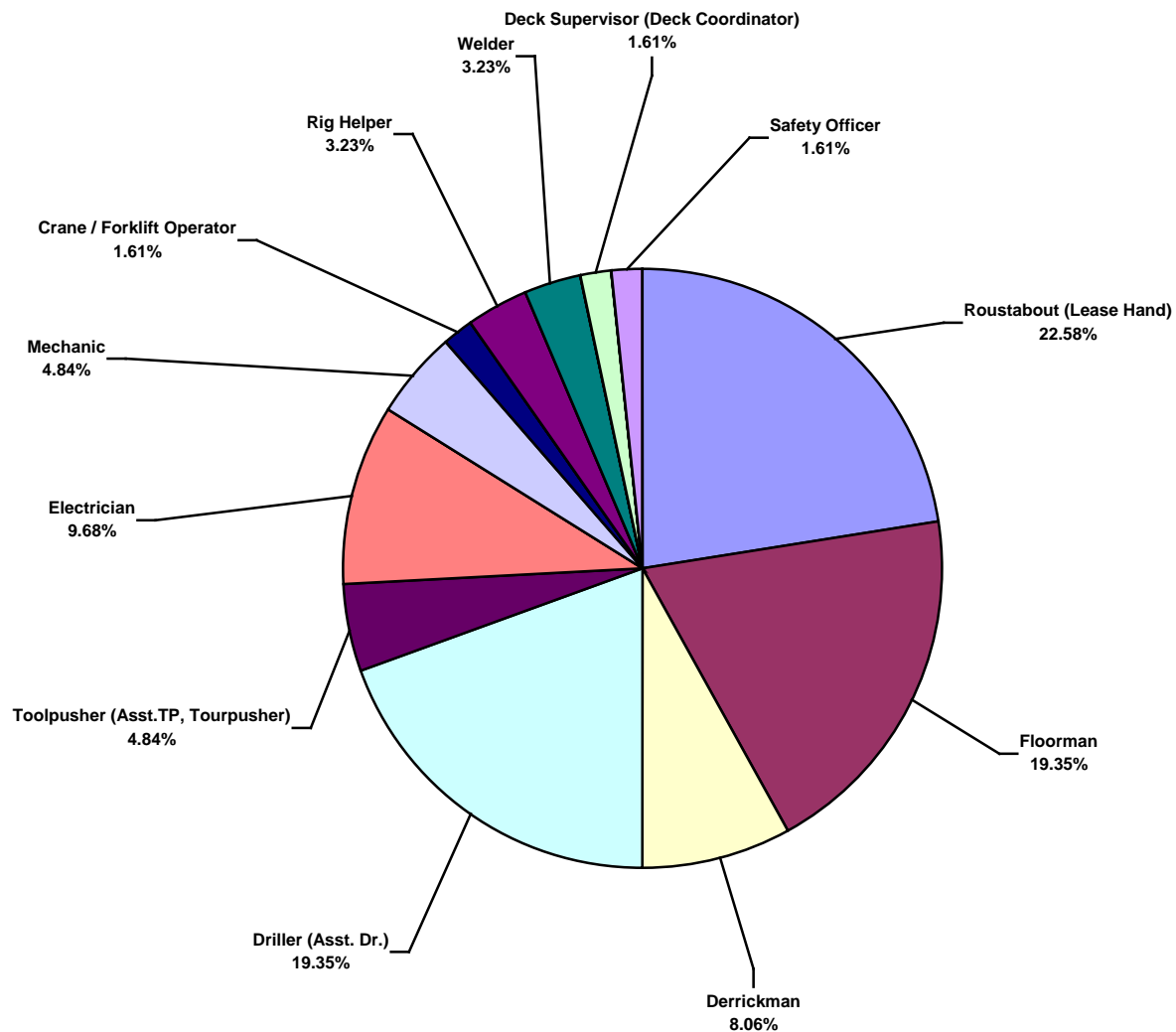
Based on 62 Incidents



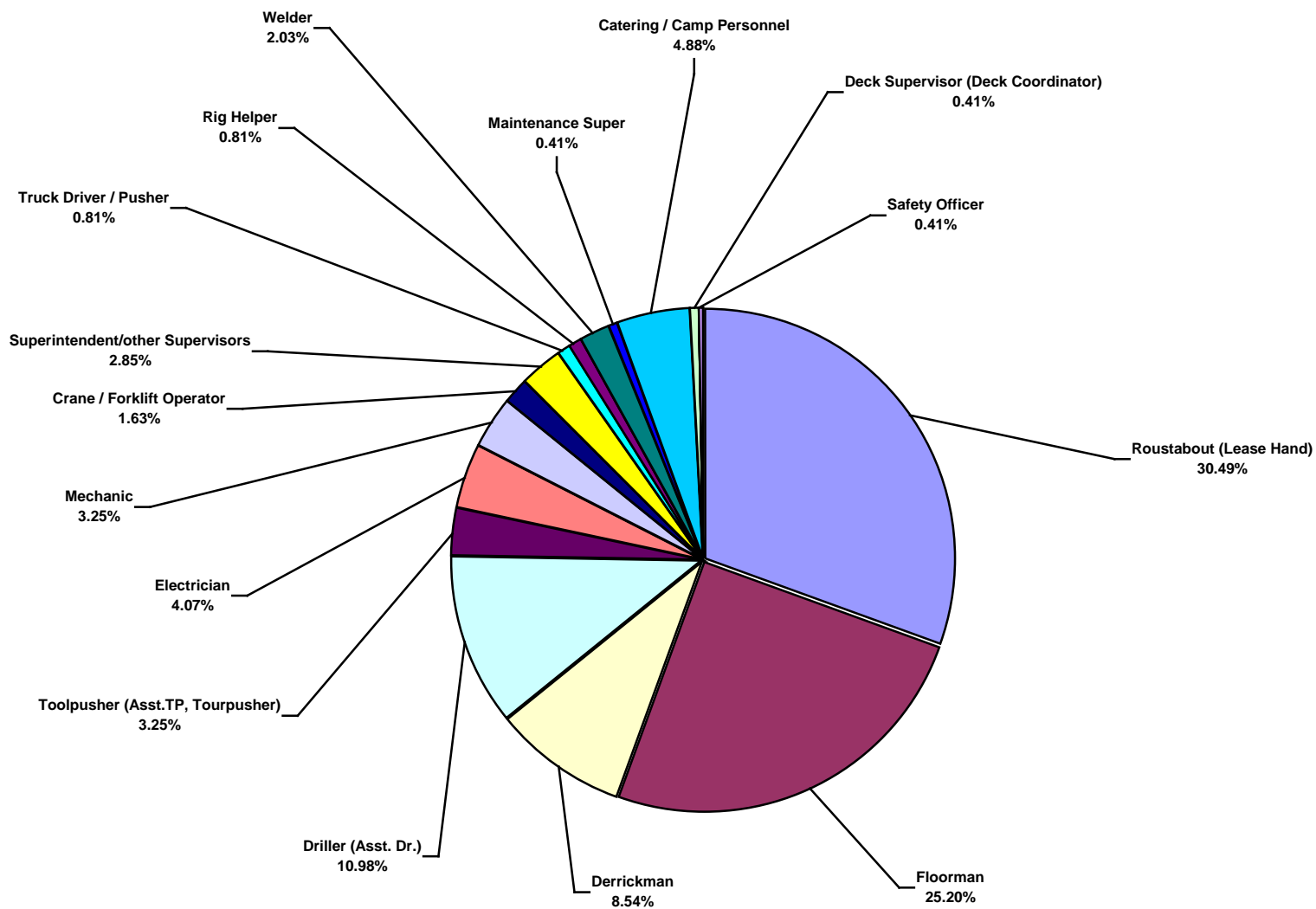
Middle East Land Total Recordable Incidents by Month (Chart 2)
Based on 246 Incidents



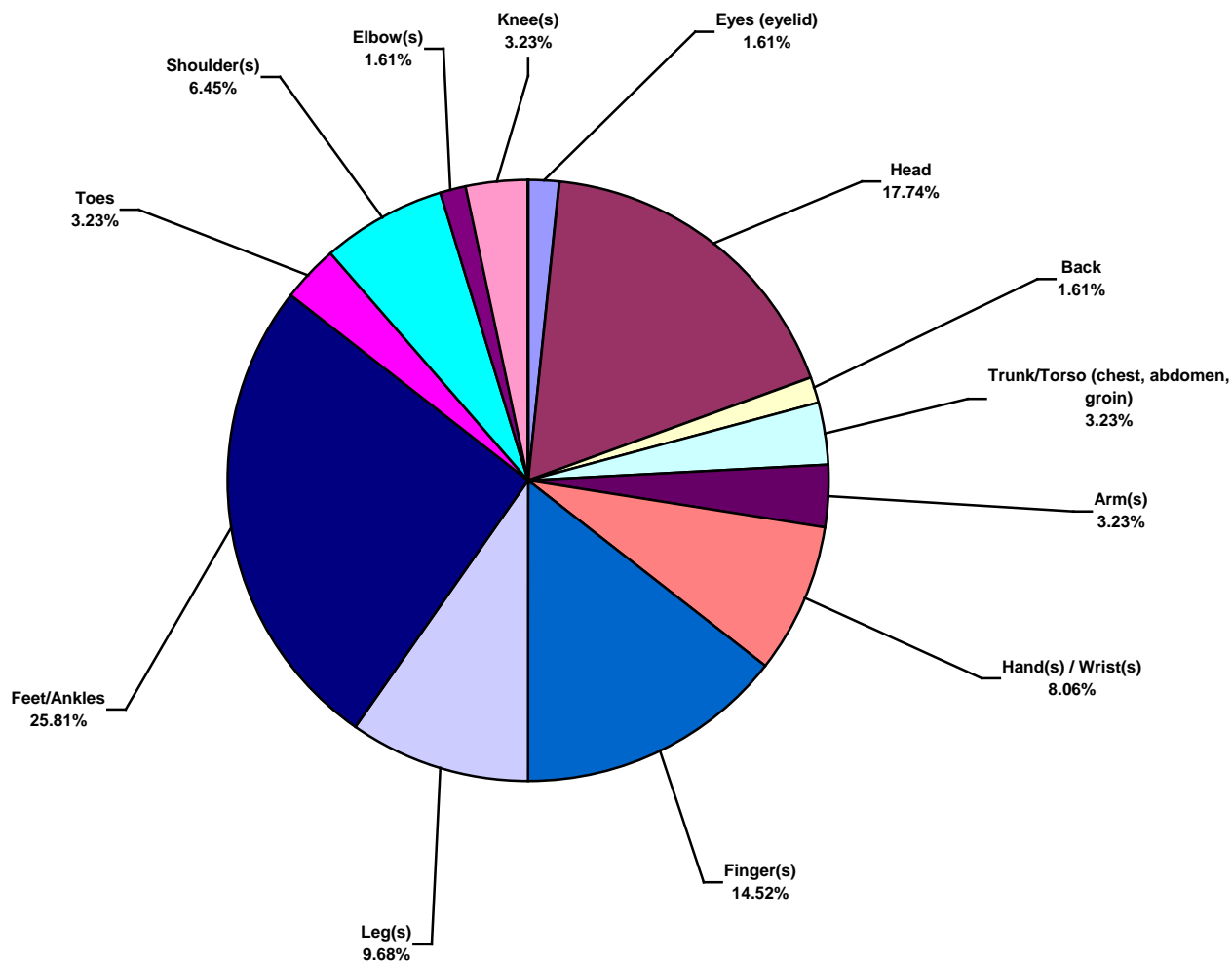
Middle East Land Total Lost Time Incidents by Occupation (Chart 3)
Based on 62 Incidents



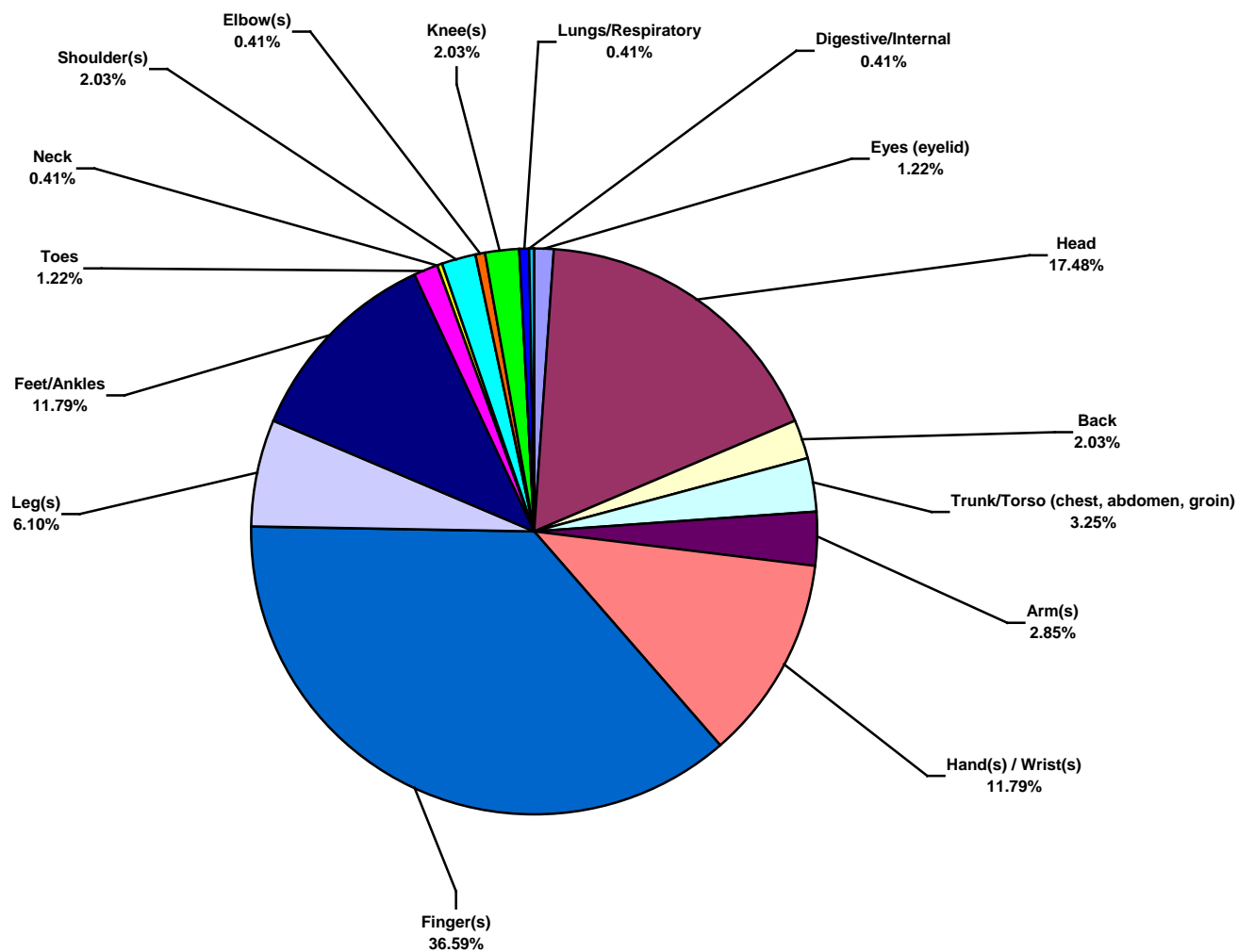
Middle East Land Total Recordable Incidents by Occupation (Chart 4)
Based on 246 Incidents



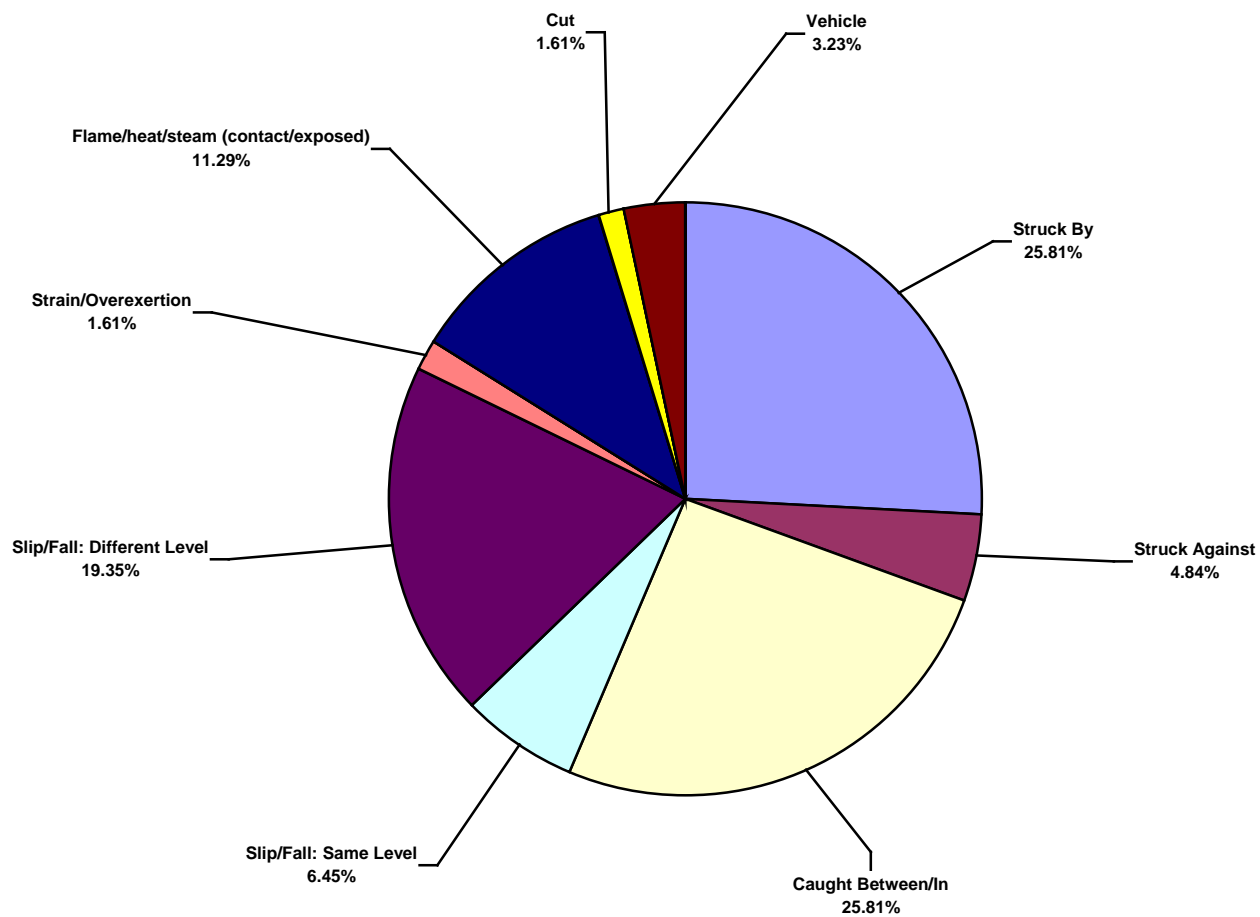
Middle East Land Total Lost Time Incidents by Body Part (Chart 5)
Based on 62 Incidents



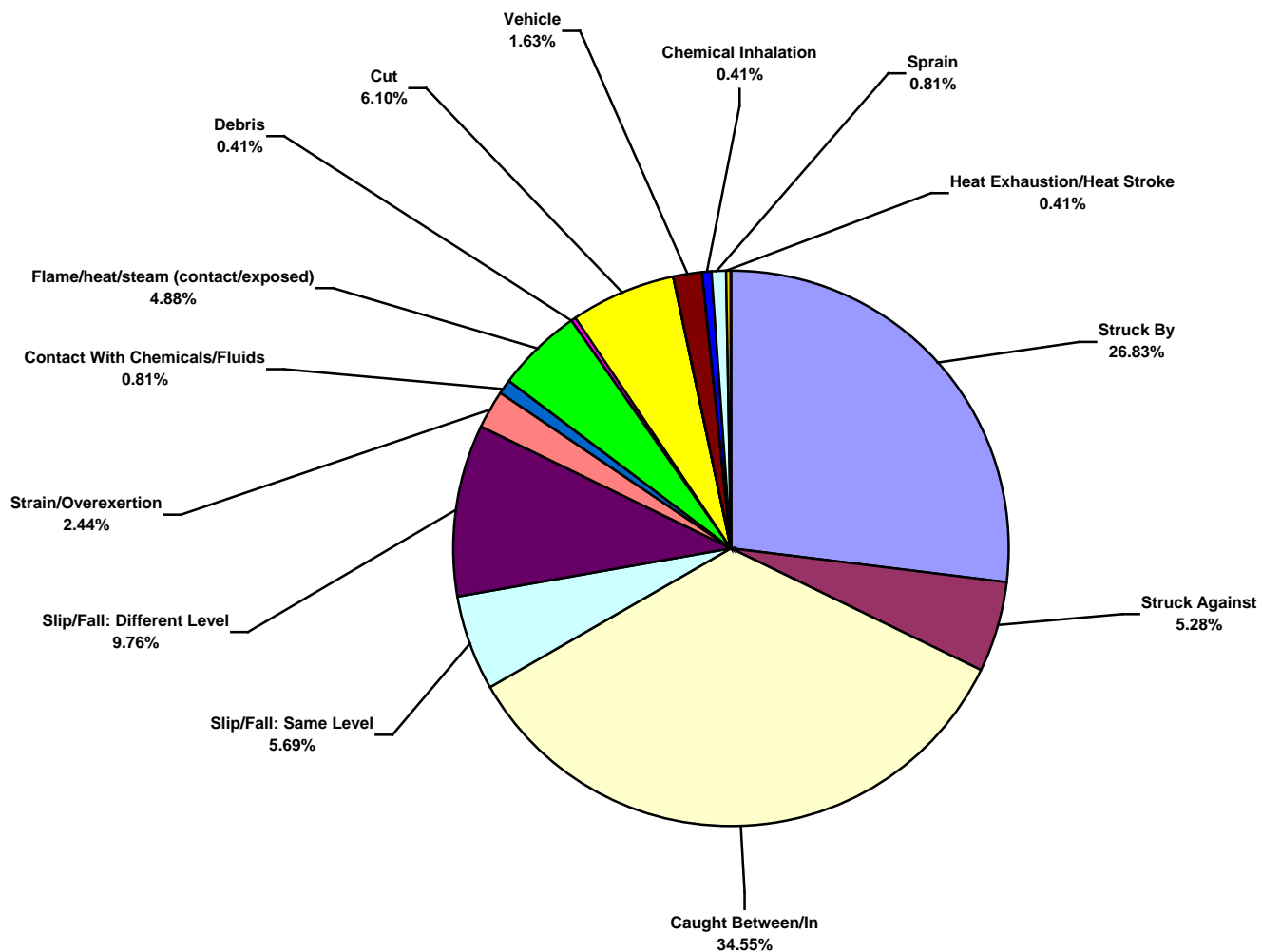
Middle East Land Total Recordable Incidents by Body Part (Chart 6)
Based on 246 Incidents



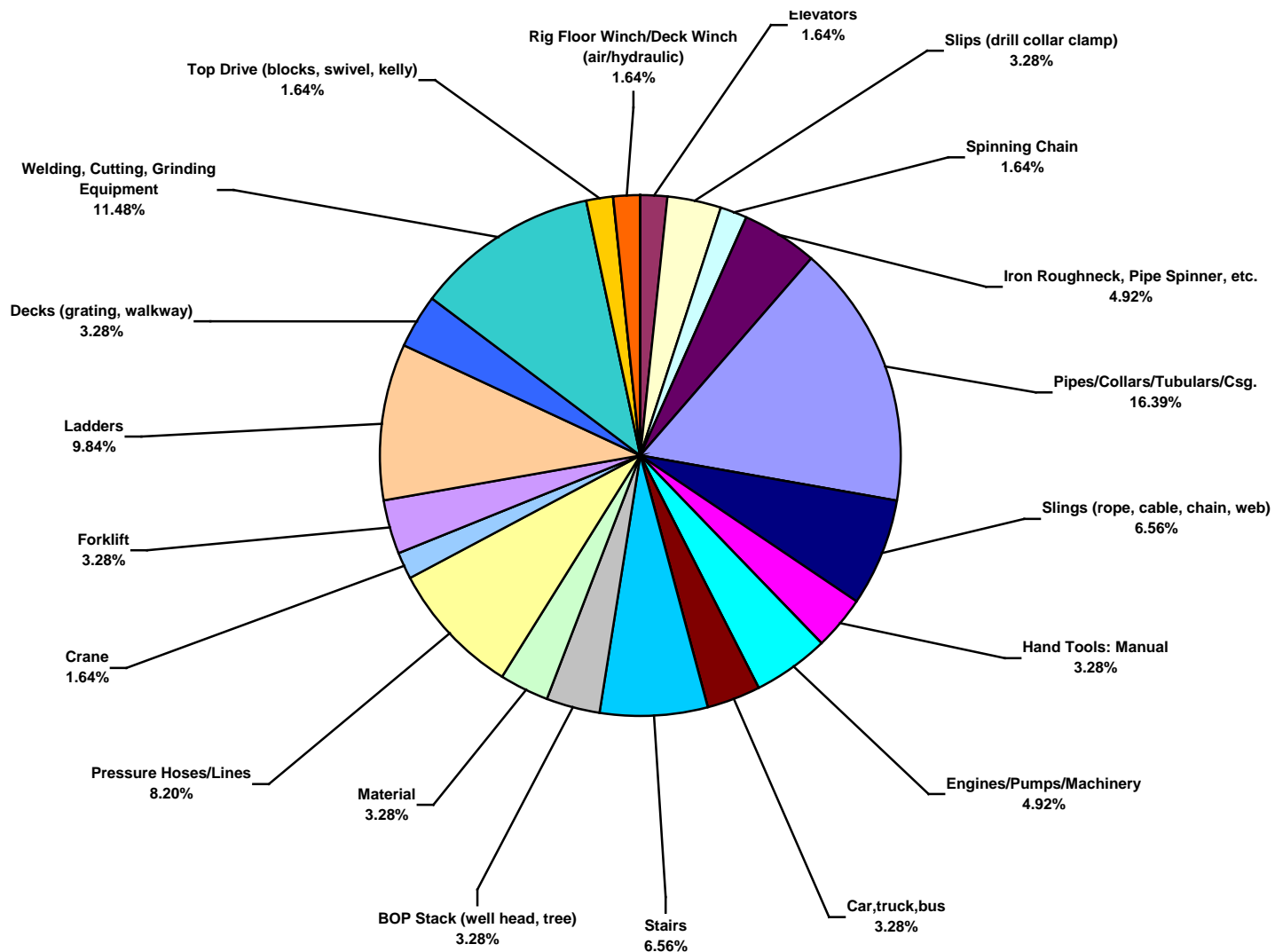
Middle East Land Total Lost Time Incidents by Incident Type (Chart 7)
Based on 62 Incidents



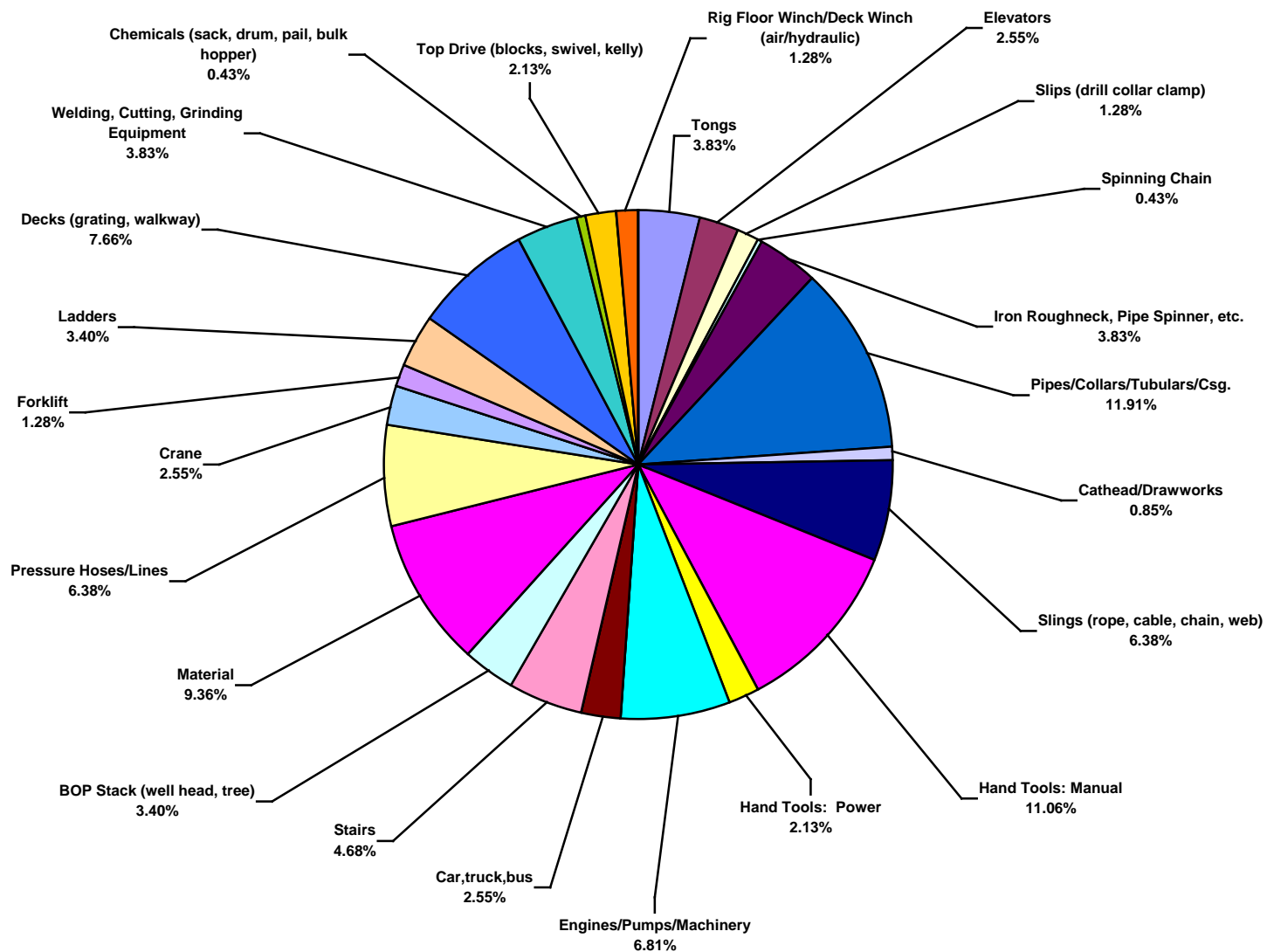
Middle East Land Total Recordable Incidents by Incident Type (Chart 8)
Based on 246 Incidents



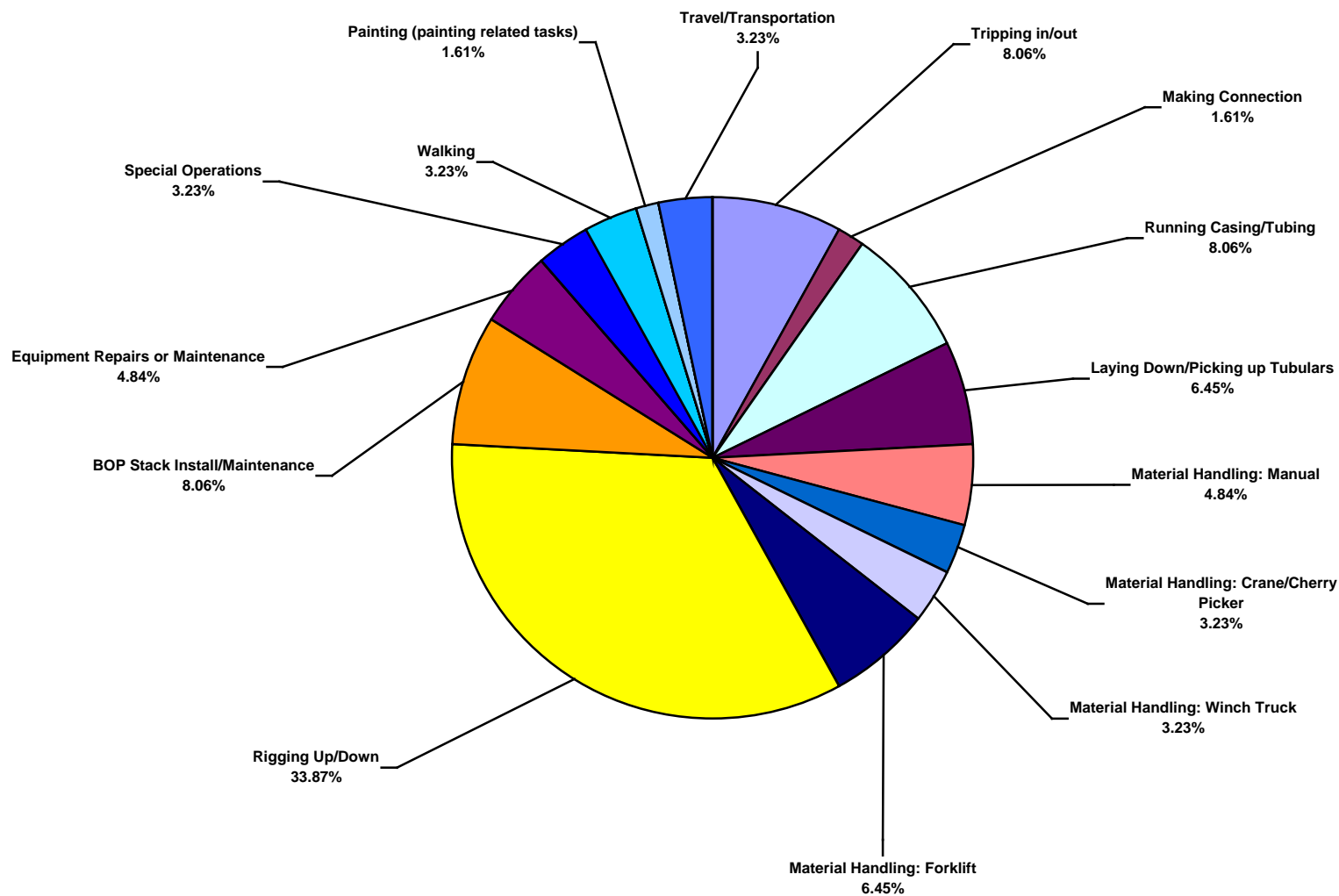
Middle East Land Total Lost Time Incidents by Equipment (Chart 9)
Based on 61 Incidents



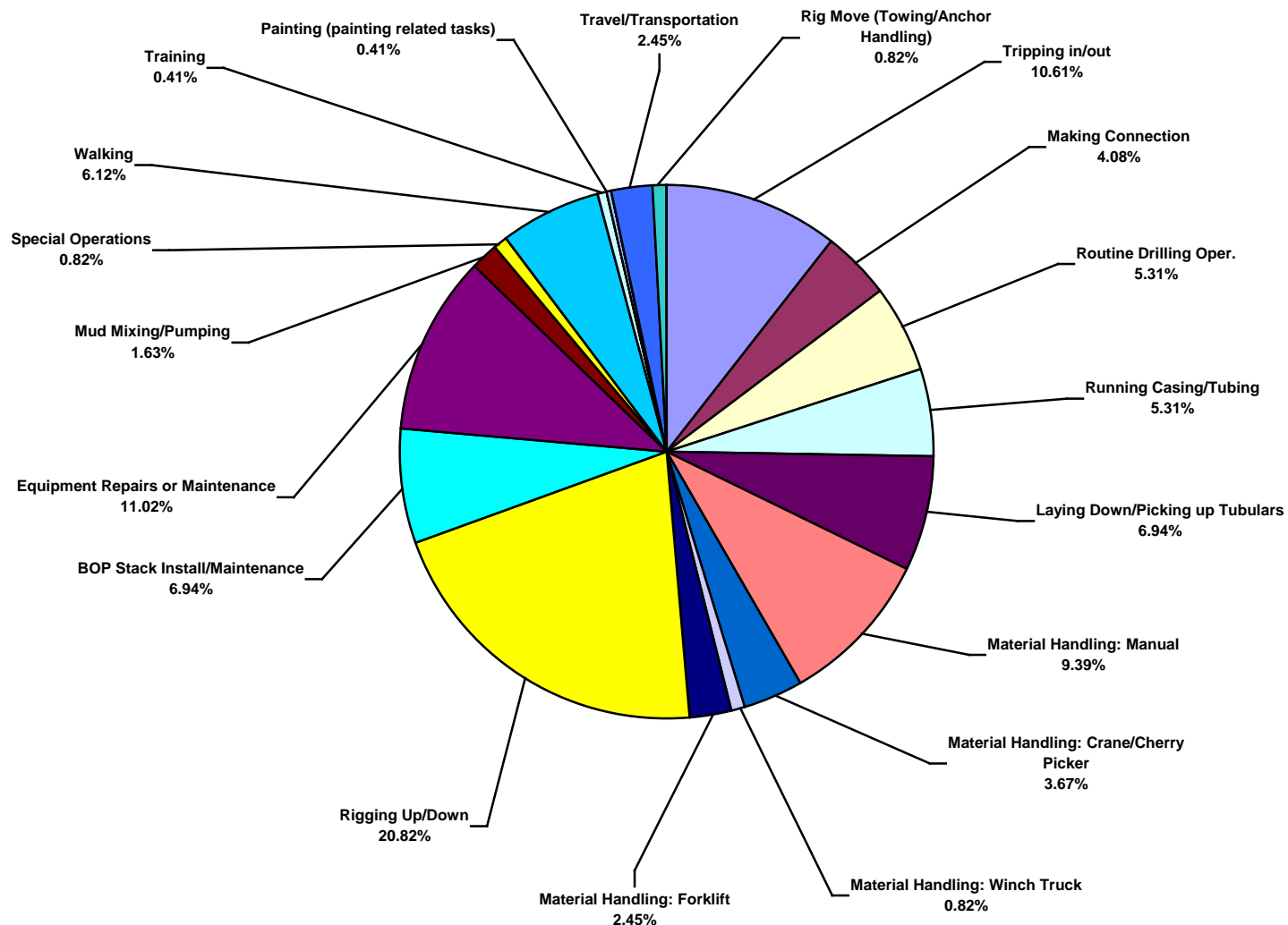
Middle East Land Total Recordable Incidents by Equipment (Chart 10)
Based on 236 Incidents



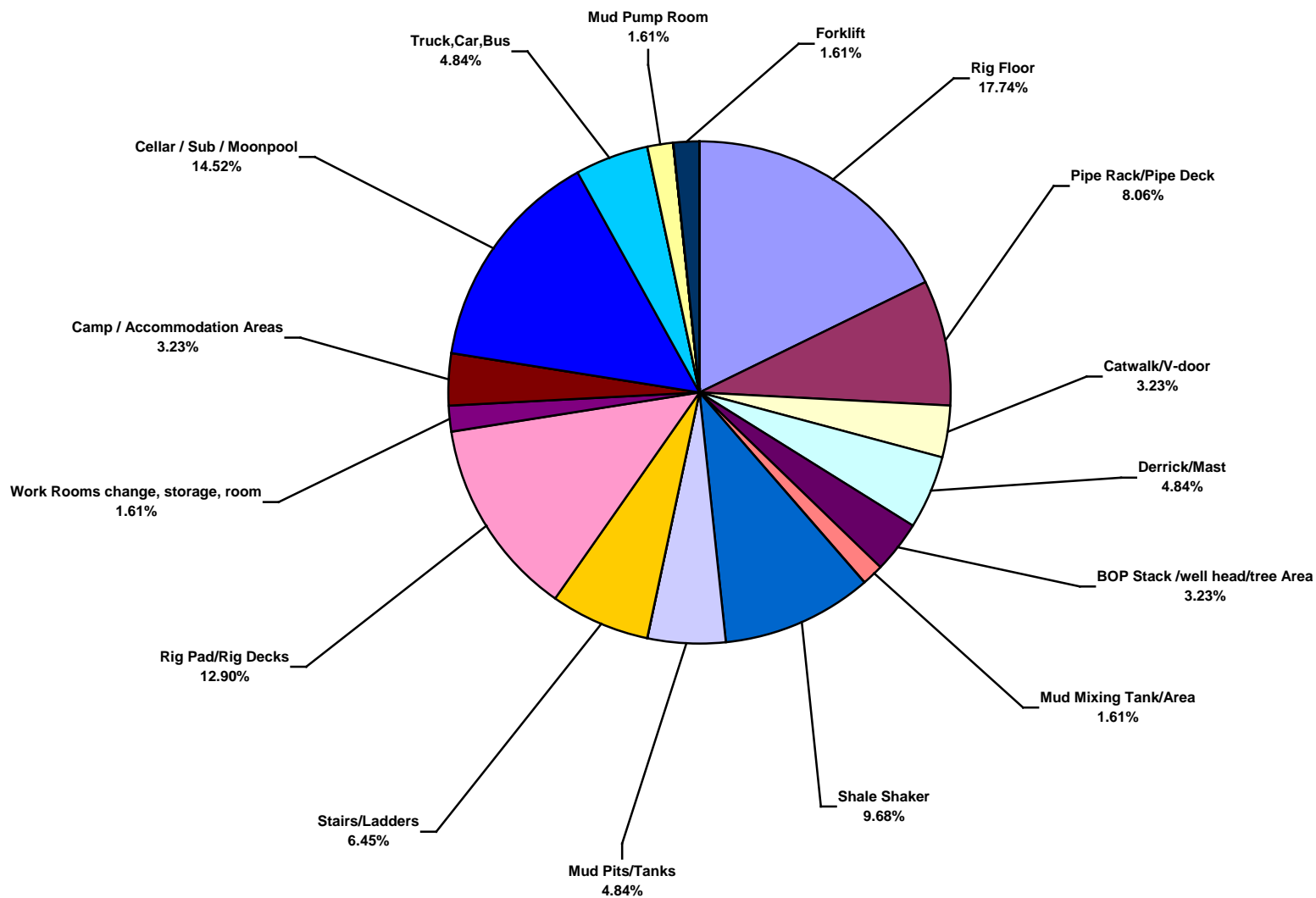
Middle East Land Total Lost Time Incidents by Operation (Chart 11)
Based on 62 Incidents



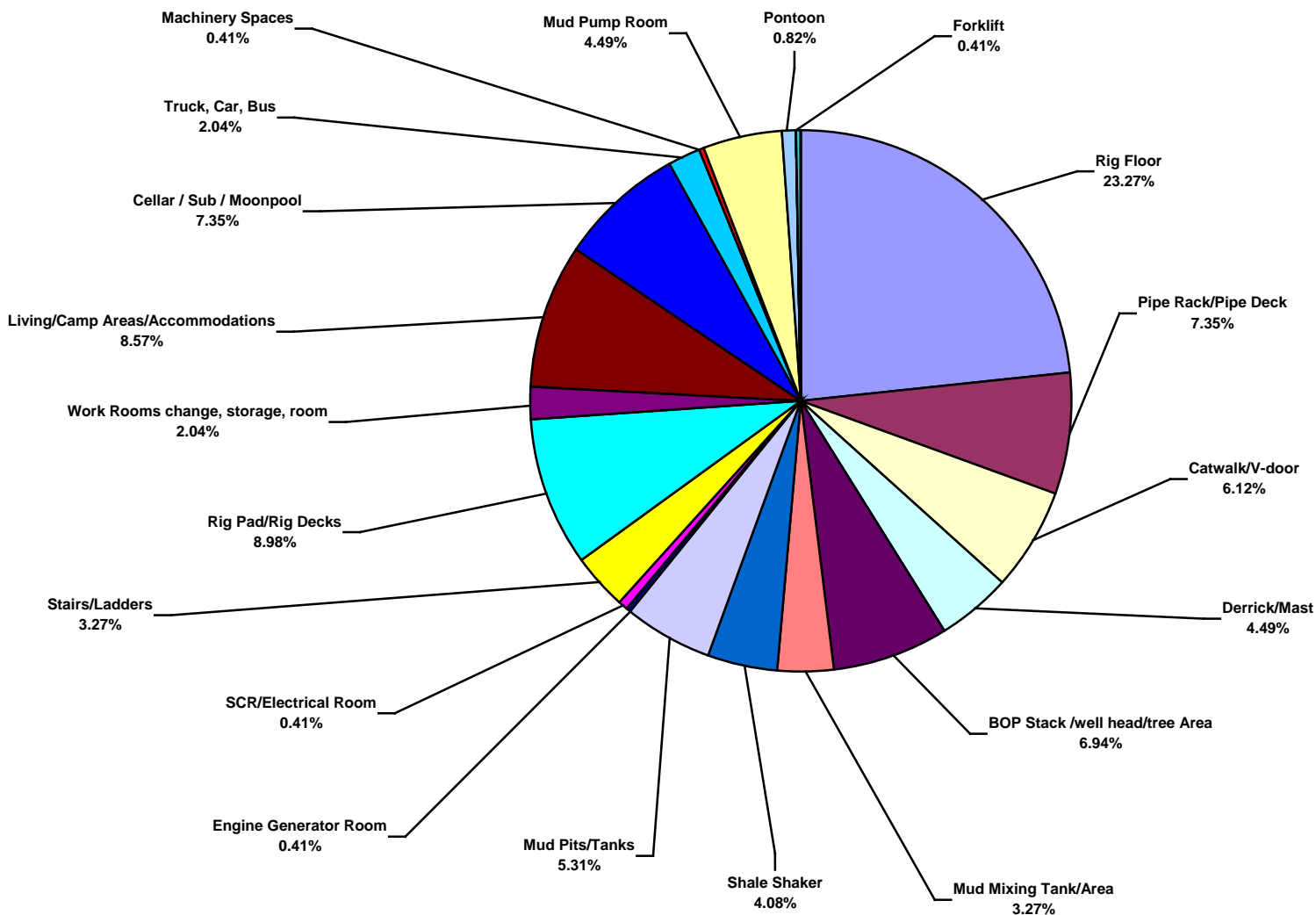
Middle East Land Total Recordable Incidents by Operation (Chart 12)
Based on 245 Incidents



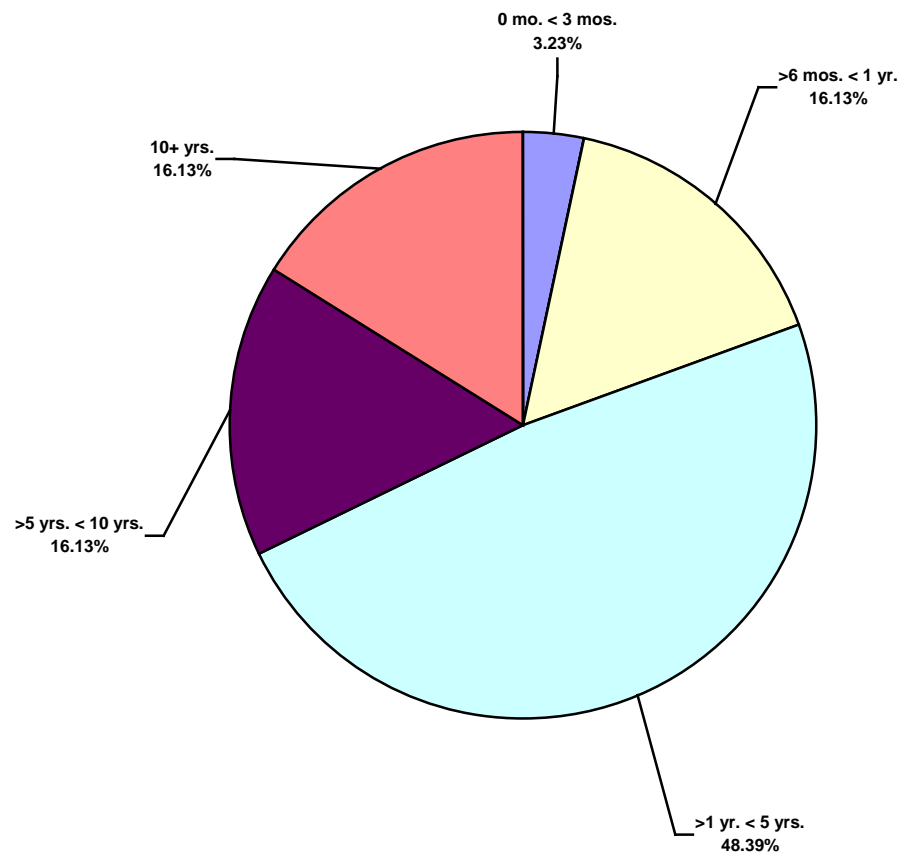
Middle East Land Total Lost Time Incidents by Location (Chart 13)
Based on 62 Incidents



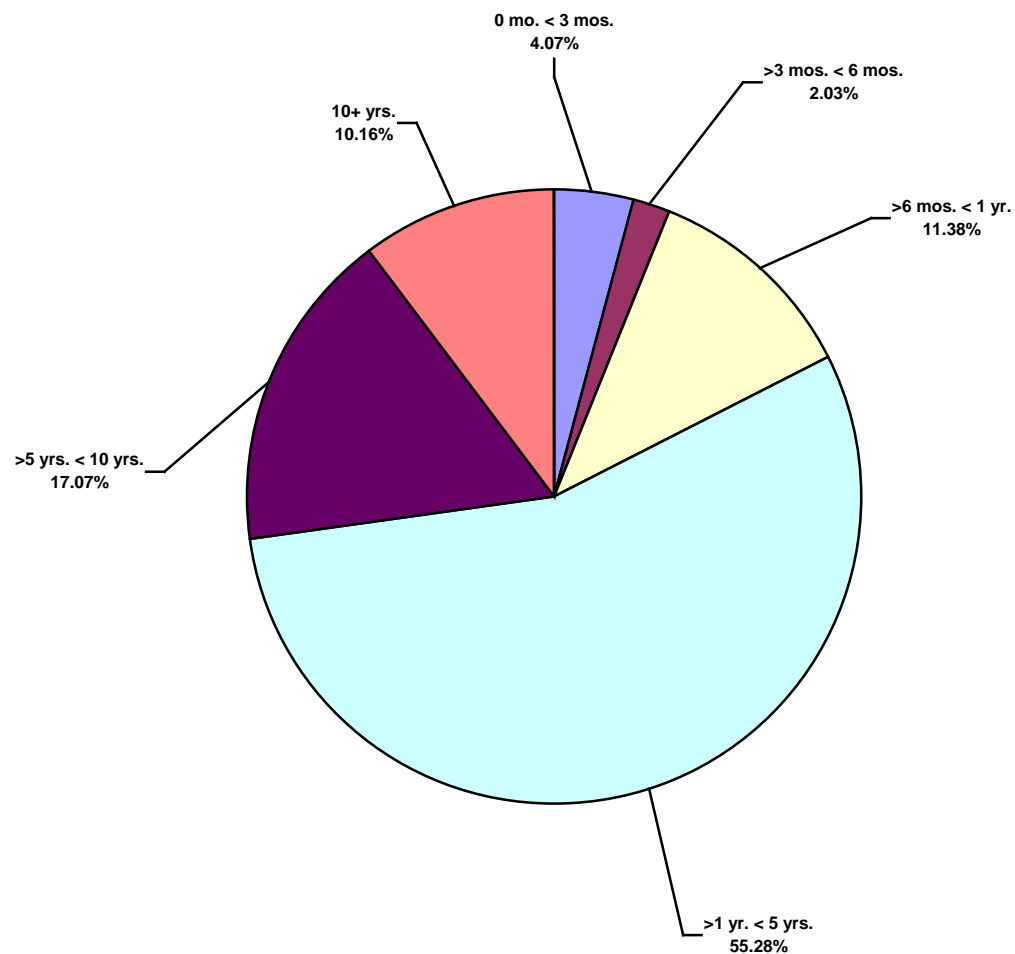
Middle East Land Total Recordable Incidents by Location (Chart 14)
Based on 245 Incidents



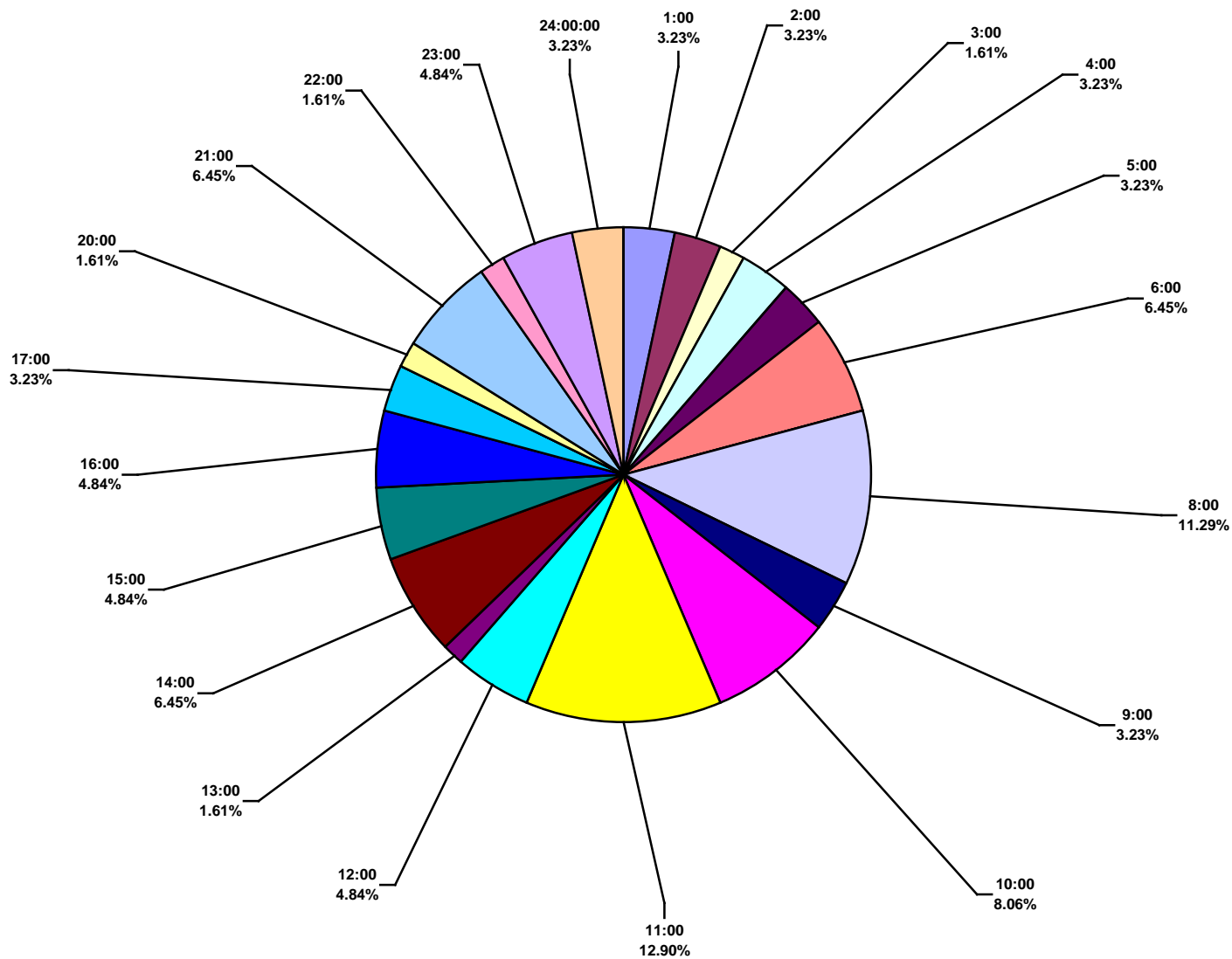
Middle East Land Total Lost Time Incidents by Time in Service (Chart 15)
Based on 62 Incidents



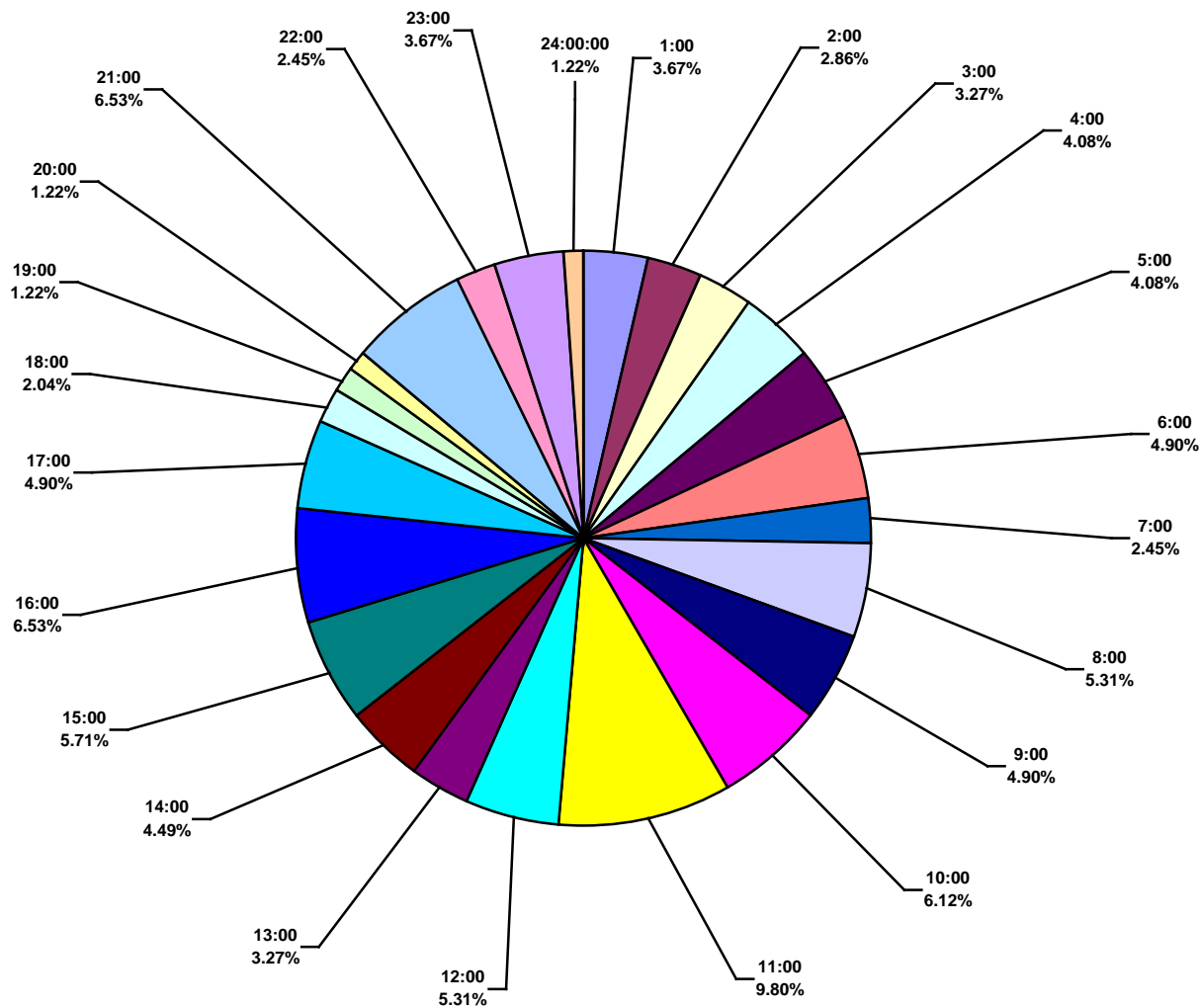
Middle East Land Total Recordable Incidents by Time in Service (Chart 16)
Based on 246 Incidents



Middle East Land Total Lost Time Incidents by Time of Day (Chart 17)
Based on 62 Incidents



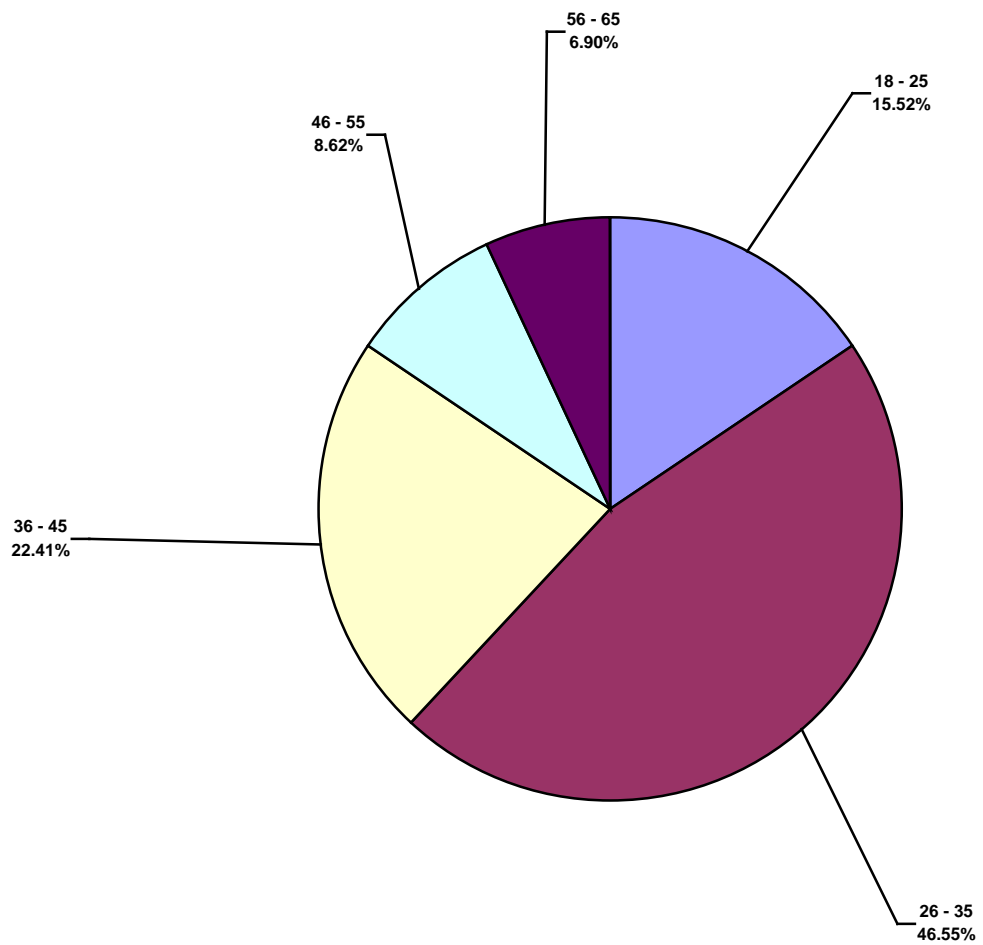
Middle East Land Total Recordable Incidents by Time of Day (Chart 18)
Based on 245 Incidents



Incidents

Issued 1 July 2017

Middle East Land Total Lost Time Incidents by Age (Chart 19)
Based on 58 Incidents



Middle East Land Total Recordable Incidents by Age (Chart 20)
Based on 231 Incidents

