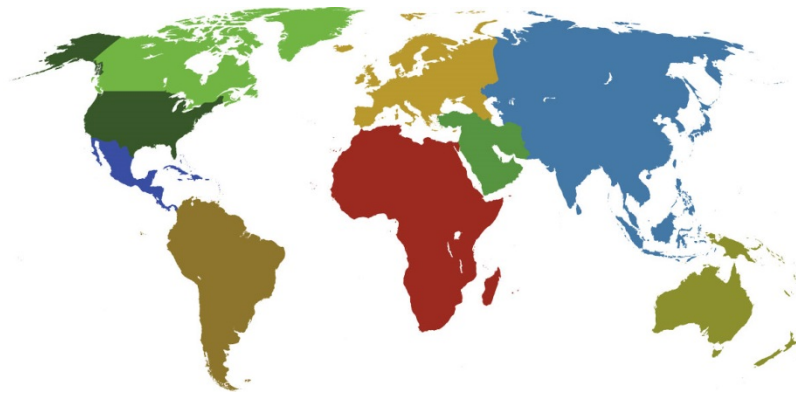




IADC

**IADC
ISP PROGRAM**

2016



**Summary of Occupational
Incidents
(Canada Water Totals)**

Issued 1 July 2017

Table of Contents

(Table of Contents is Hyperlinked, Just click on Topic & go)

IADC 2016 CANADA WATER TOTALS (TABLE 1)	1
<i>Canada Water Total Incidence Rates vs Man-hours (Figure 1)</i>	1
IADC 2016 CANADA WATER CHARTS	2
<i>Canada Water Total Recordable Incidents by Month (Chart 2)</i>	2
<i>Canada Water Total Recordable Incidents by Occupation (Chart 4)</i>	3
<i>Canada Water Total Recordable Incidents by Body Part (Chart 6)</i>	4
<i>Canada Water Total Recordable Incidents by Incident Type (Chart 8)</i>	5
<i>Canada Water Total Recordable Incidents by Equipment (Chart 10)</i>	6
<i>Canada Water Total Recordable Incidents by Operation (Chart 12)</i>	7
<i>Canada Water Total Recordable Incidents by Location (Chart 14)</i>	8
<i>Canada Water Total Recordable Incidents by Time in Service (Chart 16)</i>	9
<i>Canada Water Total Recordable Incidents by Time of Day (Chart 18)</i>	10
<i>Canada Water Total Recordable Incidents by Age (Chart 19)</i>	11

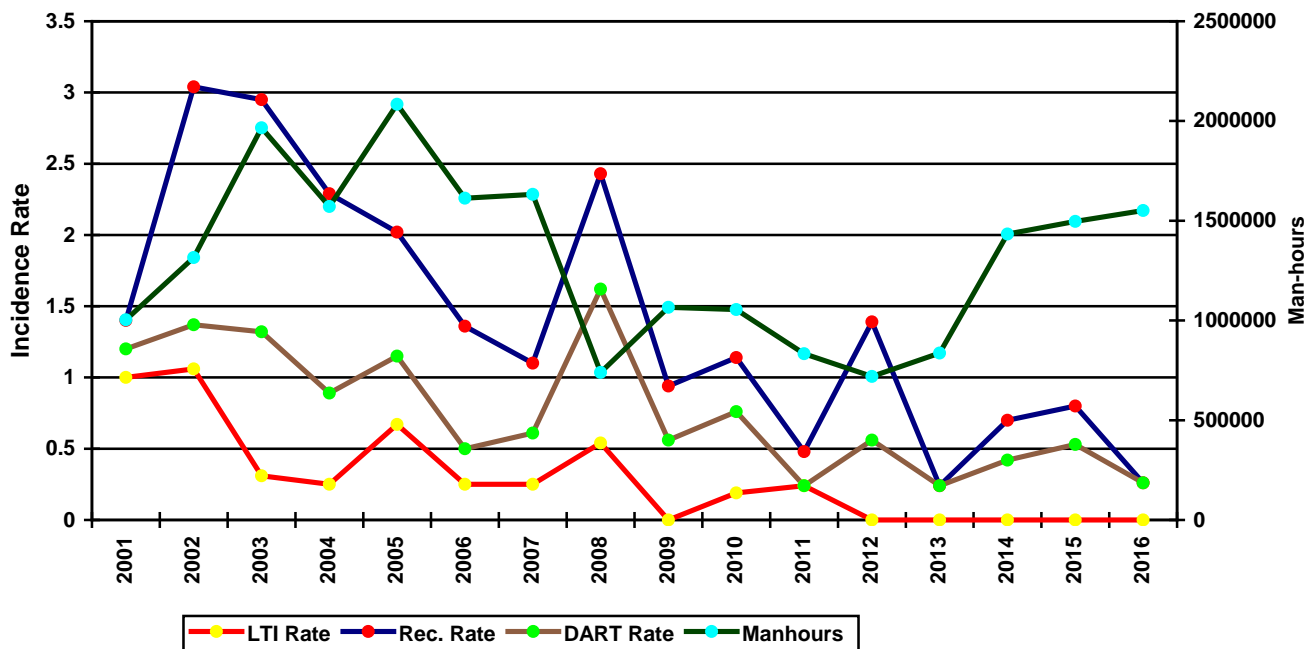
IADC 2016 Canada Water Totals (Table 1)

	<u>Totals</u>
Total Manhours	1,550,957
Total Medical Treatment Incidents	0
Total Restricted Work Incidents	2
Total Lost Time Incidents	0
Total Fatalities	0
Total Recordables	2
MTO Incidence Rate	0.00
RWC Incidence Rate	0.26
LTI Incidence Rate	0.00
LTI Frequency Rate	0.00
DART Incidence Rate	0.26
DART Frequency Rate	1.29
Recordable Incidence Rate	0.26
Recordable Frequency Rate	1.29

MEDICAL TREATMENT INCIDENCE RATE = MTOs X 200,000 / MANHOURS (LTIs NOT INCLUDED)
 RESTRICTED WORK INCIDENCE RATE = RWCs X 200,000 / MANHOURS (LTIs NOT INCLUDED)
 LOST TIME INCIDENCE RATE = (LTIs+FTLs) X 200,000 / MANHOURS
 LOST TIME FREQUENCY RATE = (LTIs+FTLs) X 1,000,000 / MANHOURS
 DART INCIDENCE RATE = (LTIs+FTLs+RWCs) X 200,000 / MANHOURS
 DART FREQUENCY RATE = (LTIs+FTLs+RWCs) X 1,000,000 / MANHOURS
 RECORDABLE INCIDENCE RATE = RECORDABLES X 200,000 / MANHOURS
 RECORDABLE FREQUENCY RATE = RECORDABLES X 1,000,000 / MANHOURS

Companies Reporting: Water – 4

Canada Water Total Incidence Rates vs Man-hours (Figure 1)

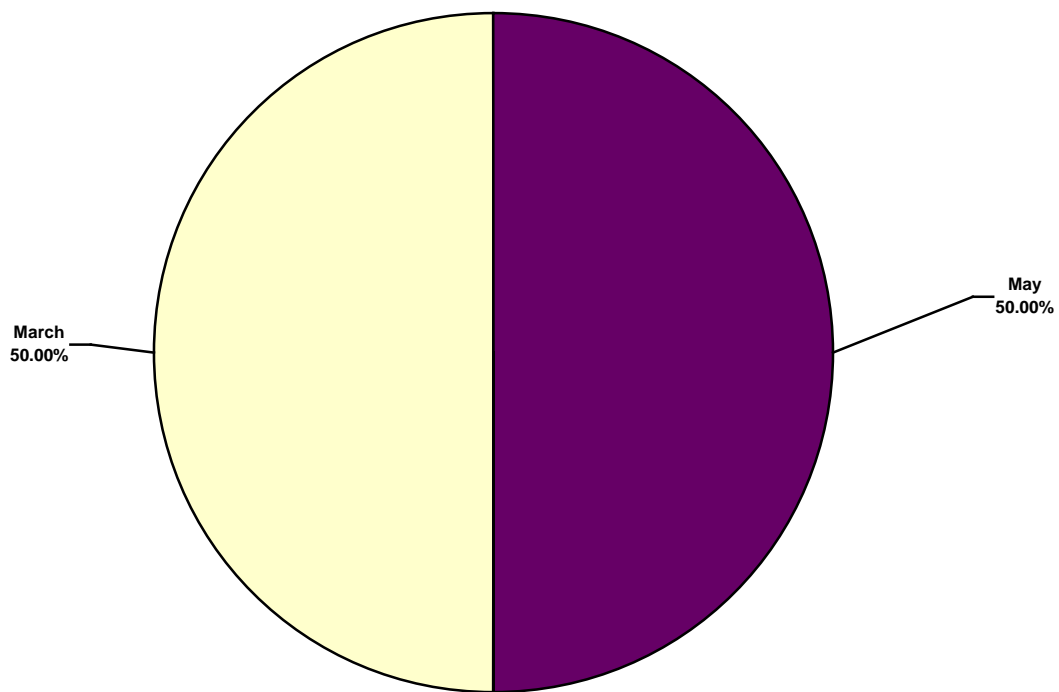


IADC 2016 Canada Water Charts

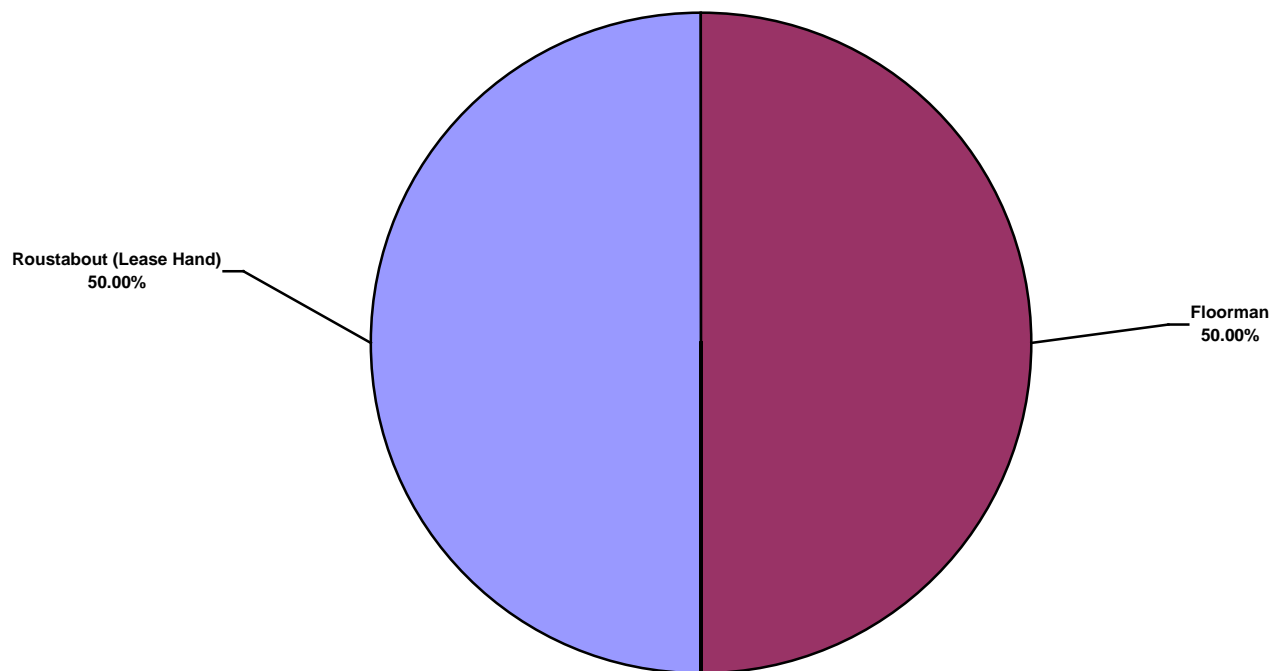
Note: There were zero Lost Time Incident recorded for 2016, therefore there will not be any charts.

Canada Water Total Recordable Incidents by Month (Chart 2)

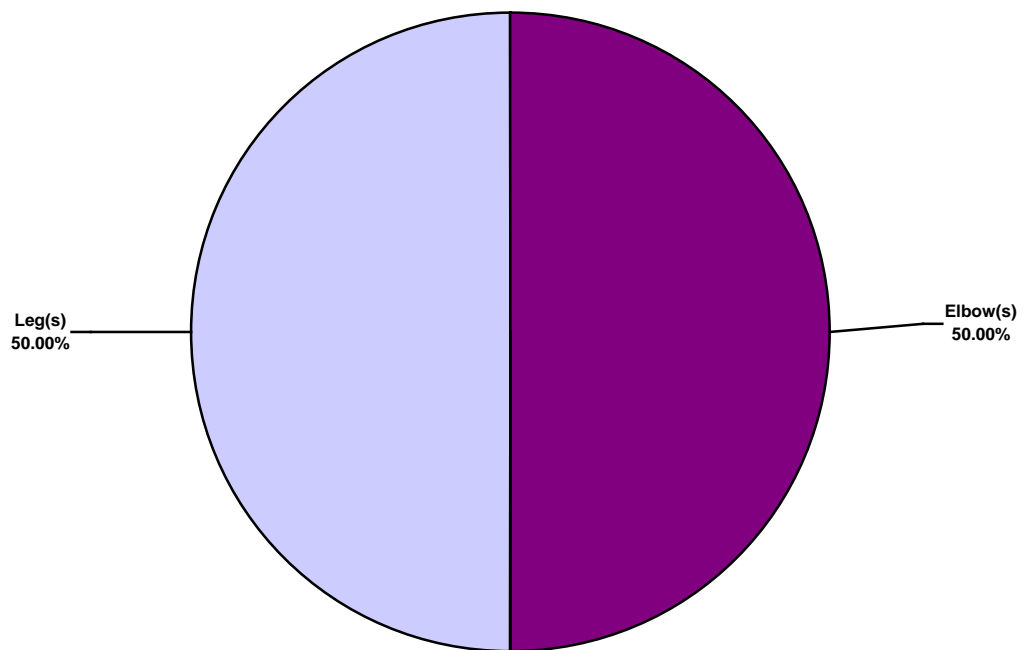
Based on 2 Incidents



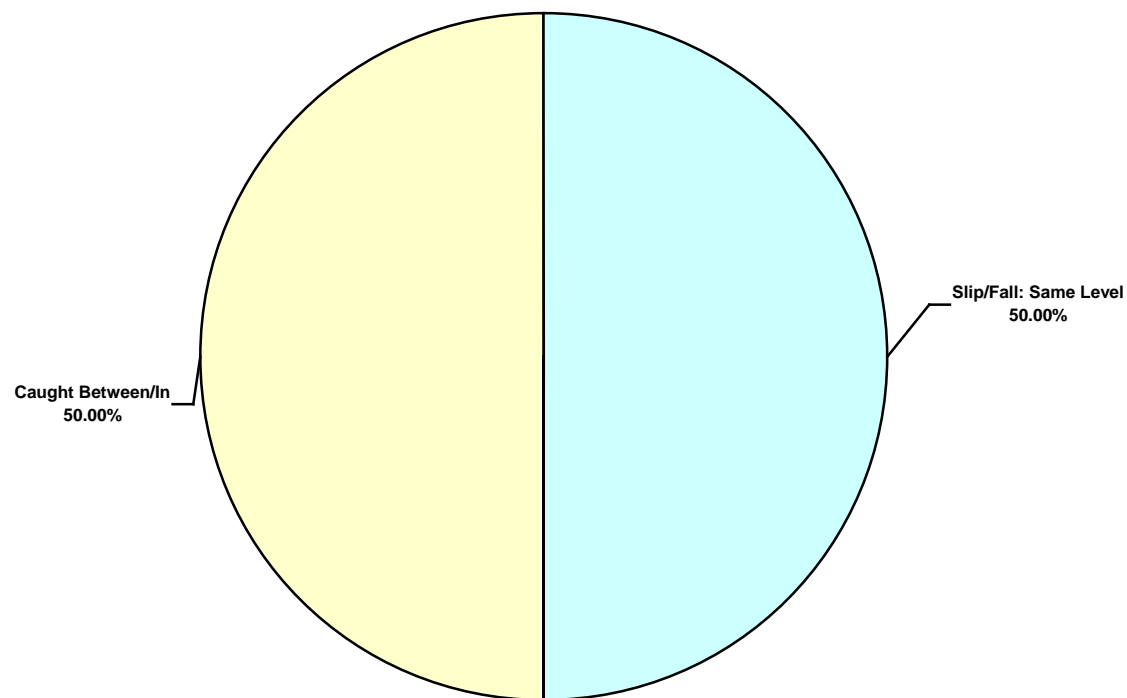
Canada Water Total Recordable Incidents by Occupation (Chart 4)
Based on 2 Incidents



Canada Water Total Recordable Incidents by Body Part (Chart 6)
Based on 2 Incidents



Canada Water Total Recordable Incidents by Incident Type (Chart 8)
Based on 2 Incidents

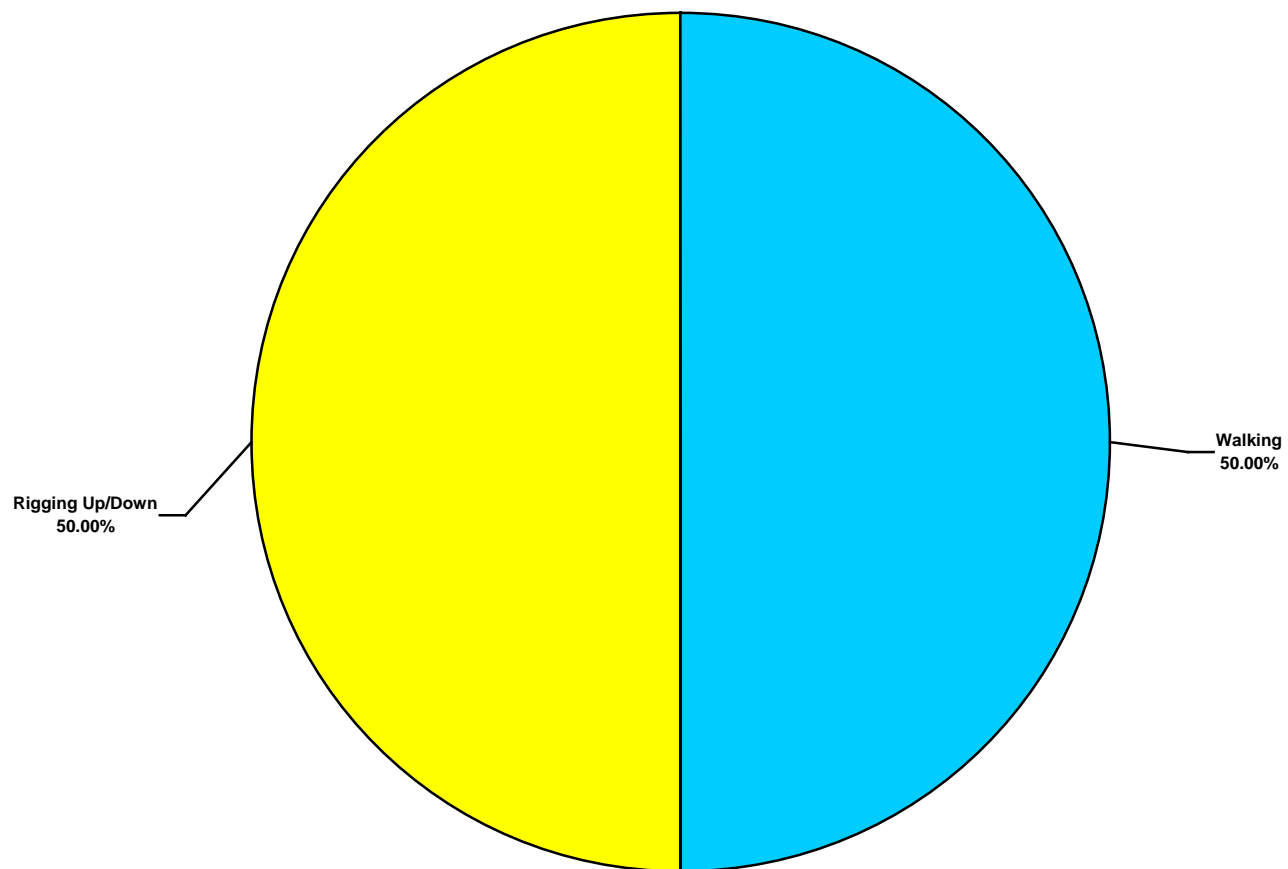


Canada Water Total Recordable Incidents by Equipment (Chart 10) Based on 2 Incidents

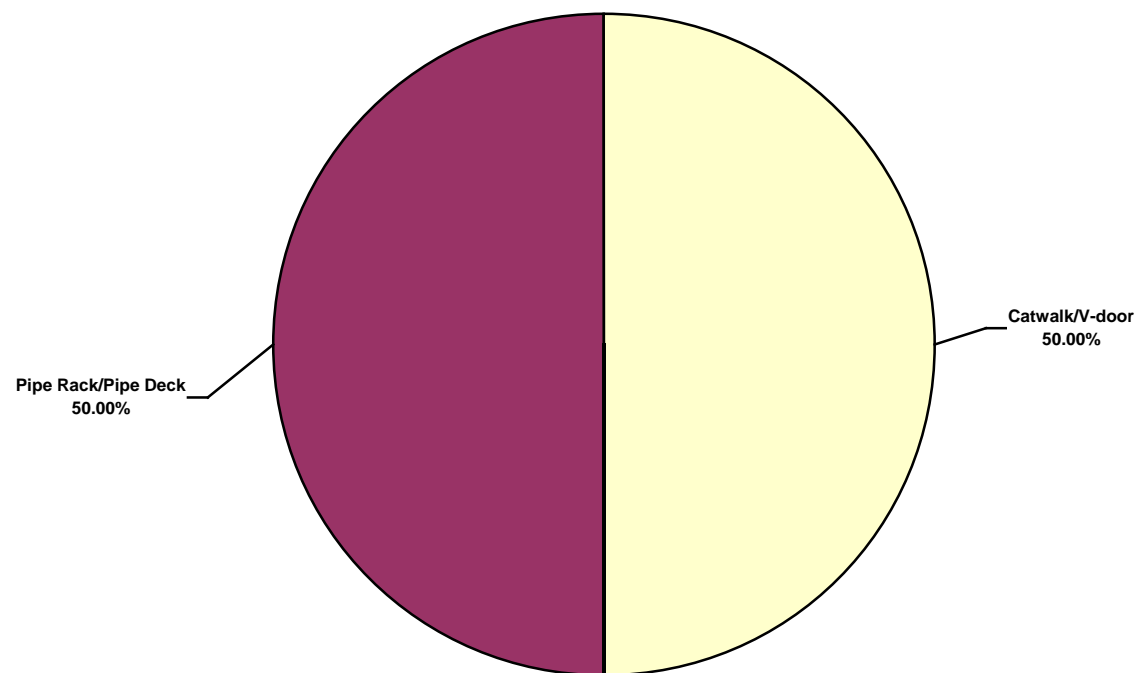
Rig Floor Winch/Deck Winch
(air/hydraulic)
100.00%



Canada Water Total Recordable Incidents by Operation (Chart 12)
Based on 2 Incident

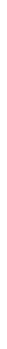


Canada Water Total Recordable Incidents by Location (Chart 14)
Based on 2 Incidents

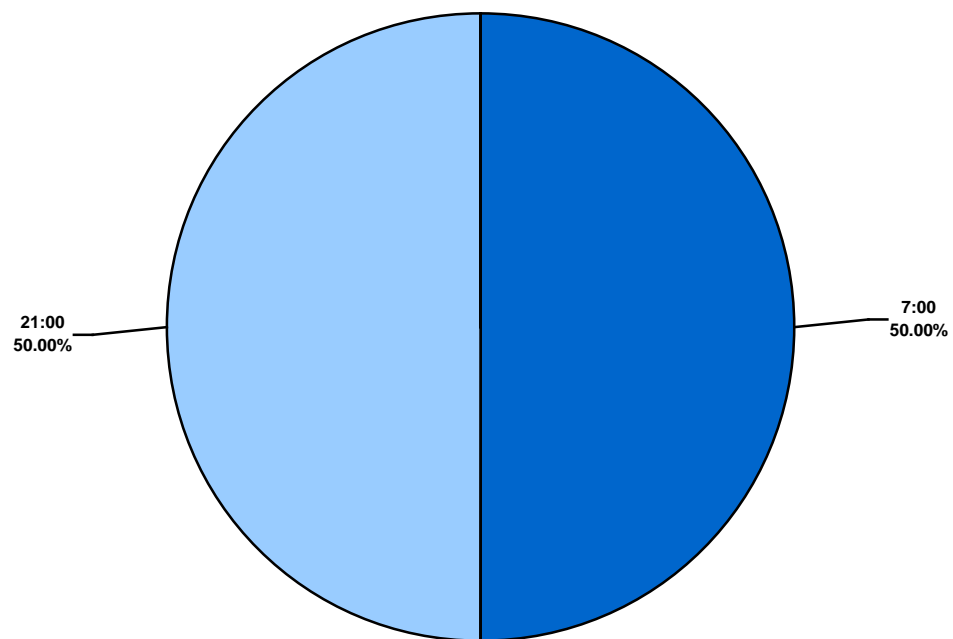


Canada Water Total Recordable Incidents by Time in Service (Chart 16)
Based on 2 Incidents

>1 yr. < 5 yrs.
100.00%



Canada Water Total Recordable Incidents by Time of Day (Chart 18)
Based on 2 Incidents



Canada Water Total Recordable Incidents by Age (Chart 19)
Based on 2 Incidents

