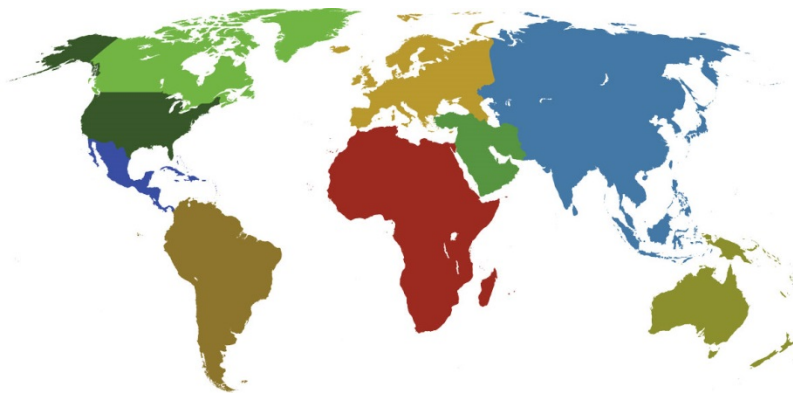




IADC

**IADC
ISP PROGRAM**

2014



**Summary of Occupational
Incidents
(Industry Totals)**



Table of Contents

(Table of Contents is Hyperlinked, Just click on Topic & go)

SUMMARY OF OCCUPATIONAL INCIDENTS INTRODUCTORY BRIEFING:	1
2014 ISP PROGRAM INDUSTRY TOTALS	7
2014 FINAL REPORT (TABLE 1)	7
5 YEAR SUMMARY REPORT (TABLE 2)	8
2014 - IADC INDUSTRY TOTALS (TABLE 3).....	9
<i>Total Industry LTI & Recordable Incidence Rates vs Man-hours (Figure 1)</i>	9
<i>Total Industry Land LTI & Recordable Incidence Rates vs Man-hours (Figure 2)</i>	10
<i>Total Industry Water LTI & Recordable Incidence Rates vs Man-hours (Figure 3)</i>	10
IADC 2014 TOTAL INDUSTRY CHARTS	11
<i>Total Industry Lost Time Incidents by Month (Chart 1)</i>	11
<i>Total Industry Recordable Incidents by Month (Chart 2)</i>	12
<i>Total Industry Lost Time Incidents by Occupation (Chart 3)</i>	13
<i>Total Industry Recordable Incidents by Occupation (Chart 4)</i>	14
<i>Total Industry Lost Time Incidents by Body Part (Chart 5)</i>	15
<i>Total Industry Recordable Incidents by Body Part (Chart 6)</i>	16
<i>Total Industry Lost Time Incidents by Incident Type (Chart 7)</i>	17
<i>Total Industry Recordable Incidents by Incident Type (Chart 8)</i>	18
<i>Total Industry Lost Time Incidents by Equipment (Chart 9)</i>	19
<i>Total Industry Recordable Incidents by Equipment (Chart 10)</i>	20
<i>Total Industry Lost Time Incidents by Operation (Chart 11)</i>	21
<i>Total Industry Recordable Incidents by Operation (Chart 12)</i>	22
<i>Total Industry Lost Time Incidents by Location (Chart 13)</i>	23
<i>Total Industry Recordable Incidents by Location (Chart 14)</i>	24
<i>Total Industry Lost Time Incidents by Time in Service (Chart 15)</i>	25
<i>Total Industry Recordable Incidents by Time in Service (Chart 16)</i>	26
<i>Total Industry Lost Time Incidents by Time of Day (Chart 17)</i>	27
<i>Total Industry Recordable Incidents by Time of Day (Chart 18)</i>	28
<i>Total Industry Lost Time Incidents by Age (Chart 19)</i>	29
<i>Total Industry Recordable Incidents by Age (Chart 20)</i>	30
2014 ISP PROGRAM REGIONAL TOTALS	31
<i>IADC 2014 Africa Totals (Table 4)</i>	31
<i>Africa Total LTI & Recordable Incidence Rates vs Man-hours (Figure 4)</i>	31
<i>IADC 2014 Asia Pacific Totals (Table 5)</i>	32
<i>Asia Pacific Total LTI & Recordable Incidence Rates vs Man-hours (Figure 5)</i>	32
<i>IADC 2014 Australasia Totals (Table 6)</i>	33
<i>Australasia Total LTI & Recordable Incidence Rates vs Man-hours (Figure 6)</i>	33
<i>IADC 2014 Canada Totals (Table 7)</i>	34
<i>Canada Total LTI & Recordable Incidence Rates vs Man-hours (Figure 7)</i>	34
<i>IADC 2014 Central America & Caribbean Totals (Table 8)</i>	35
<i>Central America & Caribbean Total LTI & Recordable Incidence Rates vs Man-hours (Figure 8)</i>	35
<i>IADC 2014 European Totals (Table 9)</i>	36
<i>European Total LTI & Recordable Incidence Rates vs Man-hours (Figure 9)</i>	36
<i>IADC 2014 Middle East Totals (Table 10)</i>	37
<i>Middle East Total LTI & Recordable Incidence Rates vs Man-hours (Figure 10)</i>	37
<i>IADC 2014 South American Totals (Table 11)</i>	38
<i>South America Total LTI & Recordable Incidence Rates vs Man-hours (Figure 11)</i>	38
<i>IADC 2014 US Totals (Table 12)</i>	39
<i>US Total LTI & Recordable Incidence Rates vs Man-hours (Figure 12)</i>	39



Summary of Occupational Incidents Introductory Briefing:

Data gathered in the IADC Incident Statistics Program (ISP) data base, shows that the oil and gas well drilling industry continues work toward reducing incidents on rigs. Even though there was a slight decrease in rig demand in 2014, the incidence rates improved slightly over 2013. Although IADC ISP calculates both Incidence rates and Frequency rates, this report is based on Incidence rates which are calculated on incidents per 200,000 man-hours.

The Summary of Occupational Incidents (SOI) is compiled annually from data volunteered by drilling contractors worldwide to the IADC ISP Program. During 2014, 107 contractors participated in the ISP representing a total of 601,351,971 million man-hours worked. Contractors striving for safety improvement by participating in the ISP program reported 2,264 Recordable incidents, 663 Lost Time incidents including 21 fatalities.

Regional Reporting

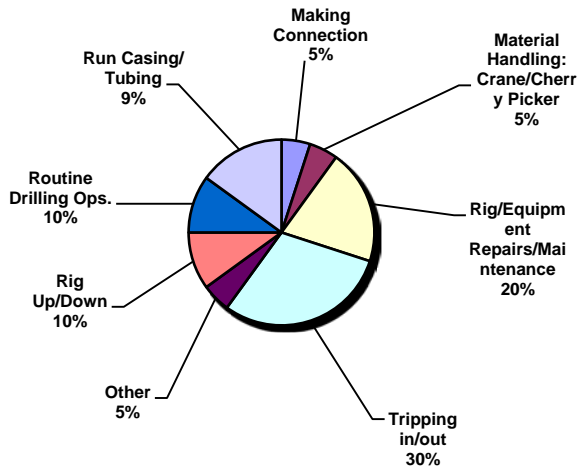
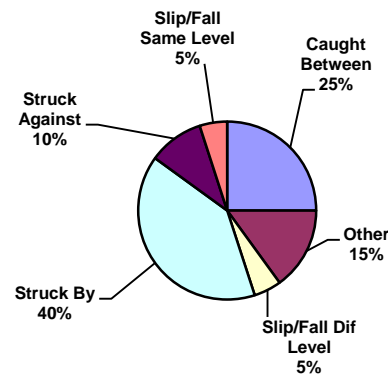
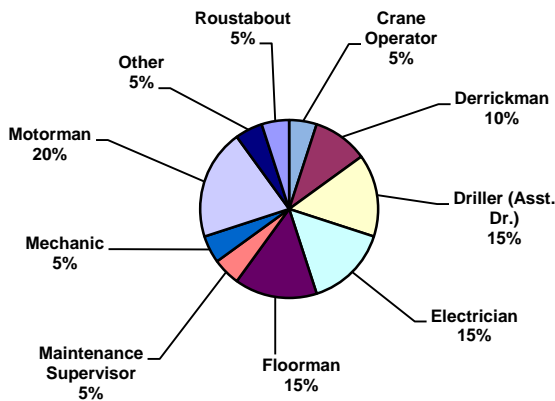
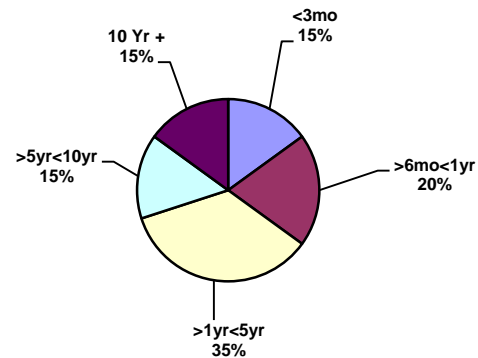
Safety data is compiled separately for Land and Offshore operations for nine geographic regions. This report is not designed to measure region against region, but to provide companies operating within each region tools to measure their efforts and make improvement in their safety efforts year over year.

Industry Improvement

2014 saw the drilling industry's worldwide Lost Time Incidence Rate improve to 0.23 which is an 11.54% improvement of the 2013 report of 0.26. The 2014 Recordable Incident rate improved to 0.75 which is a 7.41% improvement over the 2013 report of 0.81. The oil and gas well drilling industry's efforts towards safety have resulted in the industry's occupational LTI Incidence rate to remain the same from more than 14.00 in 1963 to 0.23 in 2014, which is a 60 fold improvement.

Fatalities:

In 2014 the industry's fatalities decreased to 21 incidents compared to 22 incidents reported in 2013. According to the data reported in 2014, three (3) fatalities occurred to employees who had ten or more years of service with the company. Seven (7) fatalities occurred to employees who had more than one year but less than five years of service and three (3) with less than three months of service. Four (4) of the victims had worked for the company between six months to one year and three (3) victims had worked for the company between five years and ten years. Six (6) fatalities occurred during tripping in/out and four (4) during rig/equipment repairs or maintenance. Eight (8) victims were struck-by while five (5) were due to caught between incidents. Three (3) of the fatalities occurred to floormen and four (4) fatalities occurred to motormen.

Fatal Incidents by activity

Fatal Incidents by type

Fatalities by Occupation

Fatalities by Time in Service


Regional Summaries: Man-Hours vs Fatalities

European Land and Offshore categories together worked more than 89 million man-hours in 2014 with one (1) fatality. European offshore accounted for 39.3 million man-hours with no fatalities while European Land had 49.83 million man-hours and one (1) fatality. **US Land and Offshore** contractors together worked more than 144.85 million man-hours with ten (10) fatalities. US Land had 103.73 million man-hours with ten (10) fatalities while US water had 41.12 million man-hours and no fatalities. **Canadian** contractors accounted for 4.17 million man-hours and one (1) fatality. Canadian Land had 2.74 million man-hours and one (1) fatality while offshore had 1.43 million man-hours and

no fatalities. **Central America and Caribbean** accounted for 15.50 million man-hours with two (2) fatalities. Land operations reported 8.35 million man-hours and no fatalities while water operations reported just over 7.14 million man-hours and two (2) fatalities. **Africa** combined land and offshore accounted for 74.59 million man-hours with two (2) fatalities. Africa Land accounted for 42.08 million man-hours with one (1) fatality while Africa Water had 32.5 million man-hours and one (1) fatality. The **Middle East** region accounted for 136.54 million man-hours with no fatalities. The Land division had 98.53 million man-hours and no fatalities while there were 38.01 million man-hours and no fatalities for the offshore division. **Asia Pacific** accounted for 74.94 million man-hours and three

(3) fatalities. Water had 51.99 million man-hours and three (3) fatalities while the Land Division had 22.94 million man-hours with no fatalities. **South America** made up 52.3 million man-hours with two (2) fatalities. Land had 31.97 million man-hours and no fatalities while Water had 20.32 million man-hours and two (2) fatalities. **Australasia** made up 9.28 million man-hours with no fatalities. Land had 6 million man-hours with no fatalities while offshore had 3.28 million man-hours with no fatalities.

Lost Time and Recordable Incidents by Region

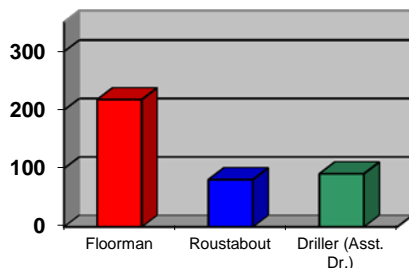
Lost time incidents among **US Offshore** workers was better by 6.67% from 0.15 in 2013 to 0.14 in 2014. The Total Recordable Incidence Rate also improved 17.95% from 0.78 in 2013 to 0.64 in 2014. **US Land** LTI Incidence rate improved 19.61% from 0.51 in 2013 to 0.41 in 2014 and Recordable Incidence Rate improved 2.53% from 1.58 in 2013 to 1.54 in 2014. **European Land** workers saw their LTI rate improve 29% from 0.34 for 2013 to 0.24 for 2014. The Recordable Incidence Rate also improved 27% from 0.48 in 2013 to 0.35 in 2014. **European Offshore** workers LTI rate improved 29.6% from 0.27 in 2013 to 0.19 in 2014 while the Recordable Incidence rate improved 14% from 0.85 in 2013 to 0.73 in 2014. **Canada Land** had a 2013 LTI rate of 0.61 which improved 52% to 0.29 for 2014, while their Recordable Incidence worsened 17.68% from 1.98 in 2013 to 2.33 for 2014. **Canada Offshore** workers saw their 2013 LTI rate of 0.0 remain the same for 2014. The Recordable Incidence rate of 0.24 for 2013 worsened 191.67% to 0.70 for 2014. **Central America and Caribbean Land** 2013 LTI rate of 0.27 worsened 59% to 0.43 for 2014. Their 2013 Recordable Incidence rate of 0.64 worsen 1.56% to 0.65 for 2014. **Central America and Caribbean Water** 2013 LTI Rate of 0.22 worsened 54.55% to 0.34 in 2014. The Recordable rate of 0.54 for 2013 worsened 66%

to 0.90 for 2014. **Africa Land** LTI rate for 2013 was 0.38 improved 16% for 0.32 in 2014. The Recordable Incidence rate improved 2.8% from 1.07 in 2013 to 1.04 in 2014. **Africa Water** LTI rate of 0.16 for 2013 worsened 12.5% to 0.18 for 2014 and their Recordable Incidence rate worsened 25% from 0.52 in 2013 to 0.65 in 2014. In 2013, **Middle East Land** had a LTI rate of 0.14 which remained the same in 2014. Their 2013 Recordable Incidence rate of 0.65 improved 16.9% to 0.54 in 2014. **Middle East Water** LTI rate of 0.08 in 2013 remained the same in 2014 and their Recordable Incidence rate worsened 20.7% from 0.29 in 2013 to 0.35 in 2014. **Asia Pacific Land** 2013 LTI rate was 0.22 and slightly worsened 9% to 0.24 in 2014, while their Recordable Incidence rate improved 52% from 0.94 in 2013 to 0.45 in 2014. **Asia Pacific Water** 2013 LTI rate of 0.15 remained the same for 2014 and their Recordable Incidence rate improved 26% from 0.54 in 2013 to 0.40 in 2014. In 2013, **South America Land** had an LTI rate of 0.16 which worsened 18.6% to 0.19 in 2014 and a 2013 Recordable rate of 0.51 which worsened 5.5% to 0.54 in 2014. **South America Water** 2013 LTI rate was 0.27 which improved 3.7% to 0.26 in 2014 and a 2013 Recordable rate of 0.66 that also improved 18% to 0.54 in 2014. **Australasia Land** had a 2014 LTI rate of 0.23 and Recordable incident rate of 1.37 for 2014. **Australasia Water** had a 2014 LTI rate of 0.06 and Recordable incident rate of 0.61.

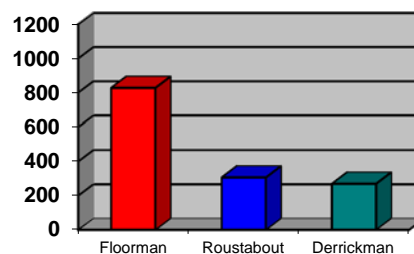
Greatest Risks:

Incidents occur in many places around the rig and to all crewmembers. Many types of equipment and rig operations are involved in incidents and all parts of the body are at risk. Incident data are analyzed by occupation, body part, incident type, equipment type, operation, location time in service and time of day the incident occurred.

LTI by Occupation
(Based on 647 incidents)

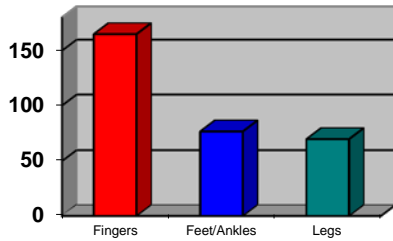


REC by Occupation
(Based on 2223 incidents)

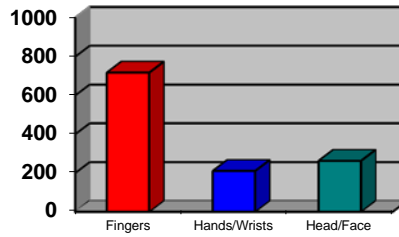


Data from the IADC ISP show that of all the categories, as with previous years, the Floorman position suffers the largest percentage of Lost Time and Recordable injuries.

LTI by Body Part
(Based on 647 incidents)

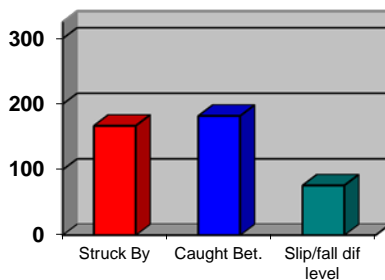


REC by Body Part
(Based on 2223 incidents)

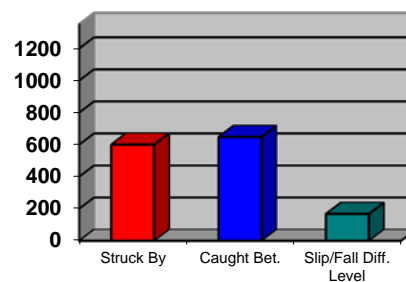


Fingers remained the most vulnerable part of the body.

LTI by Incident Type
(Based on 647 incidents)

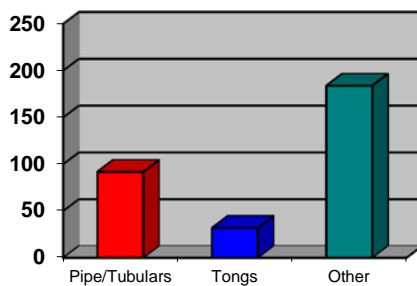


REC by Incident Type
(Based on 2223 incidents)

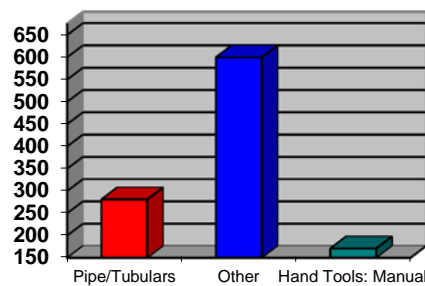


Caught Between accounted for most Lost Time and Recordable injuries and was closely followed by Struck by injuries.

LTI by Equipment
(Based on 647 incidents)

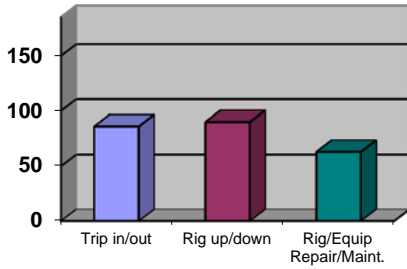


REC by Equipment
(Based on 2223 incidents)

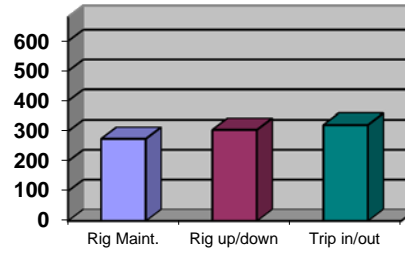


“Other” equipment is the category responsible for the most Lost Time and Recordable incidents.

LTI by Activity
(Based on 647 incidents)

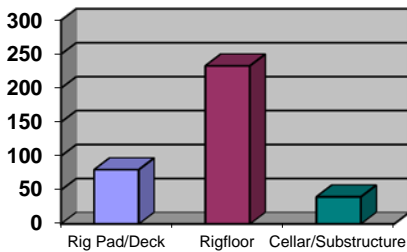


REC by Activity
(Based on 2222 incidents)

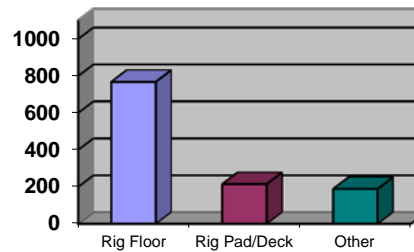


“Rig Up/Down” is the operation that involves the most Lost Time injuries while “Tripping in/out” involves the most Recordable injuries.

LTI by Location
(Based on 730 incidents)

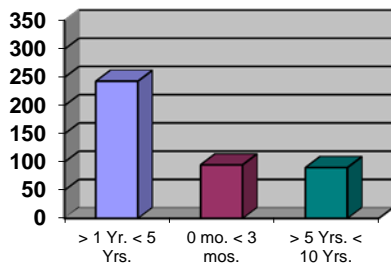


REC by Location
(Based on 2223 incidents)

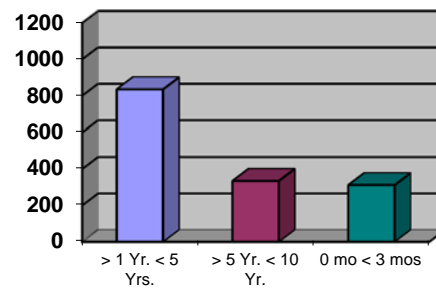


It is no surprise that by far the most Lost Time and Recordable injuries in drilling operations occur on the rig floor.

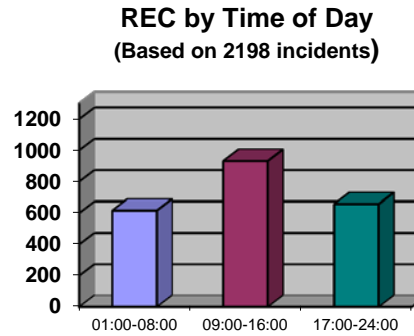
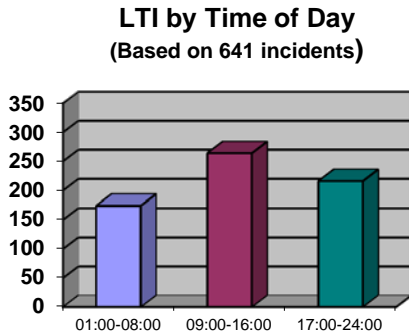
LTI by Time In Service
(Based on 633 incidents)



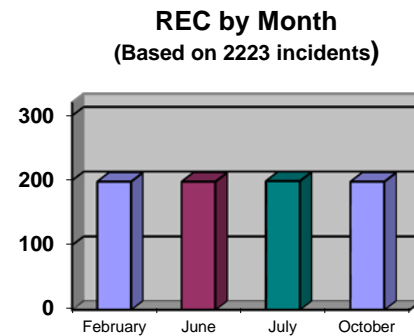
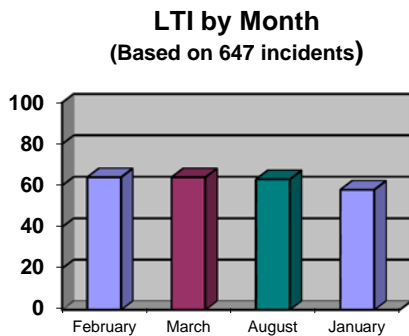
REC by Time In Service
(Based on 2170 incidents)



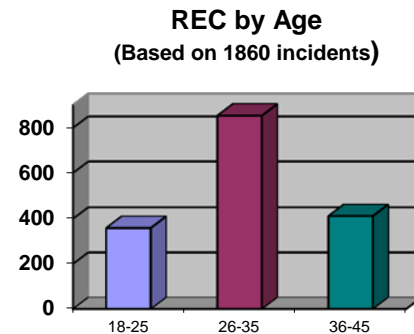
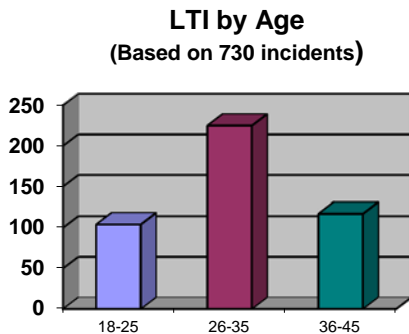
Lost Time and Recordable injuries based on Time in Service were led by employees with between one to five years of service.



The Most LTI and Recordable incidents occurred between 09:00-16:00 hours.



February and March accounted for the most Lost Time. The most Recordable incidents occurred in July.



26 – 35 age range accounted for the most Lost Time and Recordable incidents.

Conclusion:

Activity in most sectors of the industry decreased in 2014. Overall, Lost Time incidents rates and Recordable incident rates slightly improved in 2014 as compared to 2013. The industry also saw the number of fatalities decrease to 21 for 2014 compared to 22 in 2013. Although some regions did not see improvement in 2014, the overall incident and frequency rates are still trending downward even as man-hours continue to trend upwards.



2014 ISP Program Industry Totals

IADC ISP Program 2014 Final Report (Table 1)

January – December

Note: Figures are unaudited

CATEGORY	TOTAL MANHOURS	TOTAL MTOs	TOTAL RWCs	TOTAL LTIs	TOTAL FTLs	TOTAL RCRD	LTI INCD. RATE	LTI FREQ. RATE	DART INCD. RATE	DART FREQ. RATE	RCRD INCD. RATE	RCRD FREQ. RATE
US - Land	103,733,079	317	269	205	10	801	0.41	2.07	0.93	4.67	1.54	7.72
US - Water	41,122,966	65	37	29	0	131	0.14	0.71	0.32	1.60	0.64	3.19
Canada - Land	2,745,151	22	6	3	1	32	0.29	1.46	0.73	3.64	2.33	11.66
Canada - Water	1,433,556	2	3	0	0	5	0.00	0.00	0.42	2.09	0.70	3.49
Central America & Caribbean - Land	8,351,724	7	2	18	0	27	0.43	2.16	0.48	2.39	0.65	3.23
Central America & Caribbean - Water	7,148,806	16	4	10	2	32	0.34	1.68	0.45	2.24	0.90	4.48
European - Land	49,839,013	13	16	58	1	88	0.24	1.18	0.30	1.50	0.35	1.77
European - Water	39,307,901	67	38	38	0	143	0.19	0.97	0.39	1.93	0.73	3.64
Africa - Land	42,085,855	38	113	66	1	218	0.32	1.59	0.86	4.28	1.04	5.18
Africa - Water	32,506,703	39	38	28	1	106	0.18	0.89	0.41	2.06	0.65	3.26
Middle East - Land	98,533,479	109	90	67	0	266	0.14	0.68	0.32	1.59	0.54	2.70
Middle East - Water	38,015,673	17	33	16	0	66	0.08	0.42	0.26	1.29	0.35	1.74
Asia Pacific - Land	22,946,866	17	8	27	0	52	0.24	1.18	0.31	1.53	0.45	2.27
Asia Pacific - Water	51,996,092	28	39	35	3	105	0.15	0.73	0.30	1.48	0.40	2.02
South America Land	31,975,404	19	36	31	0	86	0.19	0.97	0.42	2.10	0.54	2.69
South America Water	20,327,008	16	13	24	2	55	0.26	1.28	0.38	1.92	0.54	2.71
Australasia – Land	6,001,767	20	14	7	0	41	0.23	1.17	0.70	3.50	1.37	6.83
Australasia – Water	3,280,928	3	6	1	0	10	0.06	0.30	0.43	2.13	0.61	3.05
US Combined	144,856,045	382	306	234	10	932	0.34	1.68	0.76	3.80	1.29	6.43
Canada Combined	4,178,707	24	9	3	1	37	0.19	0.96	0.62	3.11	1.77	8.85
Central America & Caribbean Com.	15,500,530	23	6	28	2	59	0.39	1.94	0.46	2.32	0.76	3.81
European Combined	89,146,914	80	54	96	1	231	0.22	1.09	0.34	1.69	0.52	2.59
Africa Combined	74,592,558	77	151	94	2	324	0.26	1.29	0.66	3.31	0.87	4.34
Middle East Combined	136,549,152	126	123	83	0	332	0.12	0.61	0.30	1.51	0.49	2.43
Asia Pacific Combined	74,942,958	45	47	62	3	157	0.17	0.87	0.30	1.49	0.42	2.09
South America Combined	52,302,412	35	49	55	2	141	0.22	1.09	0.41	2.03	0.54	2.70
Australasia Combined	9,282,695	23	20	8	0	51	0.17	0.86	0.60	3.02	1.10	5.49
INDUSTRY TOTAL	601,351,971	815	765	663	21	2,264	0.23	1.14	0.48	2.409	0.75	3.76

MTO=Medical Treatment Only	INCD = Incidence Rate (200,000 man-hours) :	$LTI\ INCD\ Rate = (LTI\ s+ FTLs) * 200000 / Total\ Man\ hours$ $DART\ INCD\ Rate = (RWC + LTI + FTL) * 200000 / Total\ Man\ hours$ $RCRD\ INCD\ Rate = (MTOs + RWCs + LTIs + FTLs) * 200000 / Total\ Man\ hours$
RWC =Restricted Work Case		
LTI =Lost Time Incident	FREQ = Frequency Rate (1,000,000 man-hours):	$LTI\ FREQ\ Rate = (LTI\ s+ FTLs) * 1000000 / Total\ Man\ hours$ $DART\ FREQ\ Rate = (RWC + LTI + FTL) * 1000000 / Total\ Man\ hours$ $RCRD\ FREQ\ Rate = (MTOs + RWCs + LTIs + FTLs) * 1000000 / Total\ Man\ hours$
FTL =Fatalities		
RCRD =Total Recordables		

**IADC ISP Program
5 Year Summary Report (Table 2)
Lost Time and Total Recordable Incidence/Frequency Rate**

CATEGORIES	TYPE	2014		2013		2012		2011		2010		
		INCD Rate	FREQ Rate	INC D Rate	FREQ Rate	INCD Rate	FREQ Rate	INCD Rate	FRE Q Rate	INCD Rate	FREQ Rate	
US Land	LTI:	0.41	2.07	0.51	2.54	0.51	2.55	0.87	4.34	1.02	5.12	
	DART:	0.93	4.67	0.96	4.81	1.16	5.79	1.75	8.73	1.99	9.96	
	RCRD:	1.54	7.72	1.58	7.92	1.97	9.87	3.09	15.43	3.44	17.19	
US Water	LTI:	0.14	0.71	0.15	0.74	0.19	0.93	0.18	0.91	0.24	1.18	
	DART:	0.32	1.60	0.45	2.24	0.44	2.21	0.39	1.93	0.57	2.86	
	RCRD:	0.64	3.19	0.78	3.91	0.93	4.64	0.82	4.11	0.86	4.31	
Canada Land	LTI:	0.29	1.46	0.61	3.05	0.69	3.44	1.16	5.78	0.36	1.78	
	DART:	0.73	3.64	0.76	3.82	1.31	6.53	1.54	7.71	1.07	5.34	
	RCRD:	2.33	11.66	1.98	9.92	2.68	13.41	3.57	17.83	2.4	12.02	
Canada Water	LTI:	0.00	0.00	0.00	0.00	0.00	0.00	0.31	1.53	0.19	0.95	
	DART:	0.42	2.09	0.24	1.20	0.56	2.78	0.3	1.53	0.76	3.79	
	RCRD:	0.70	3.49	0.24	1.20	1.39	6.95	0.61	3.06	1.14	5.69	
Central America & Caribbean Land	LTI:	0.43	2.16	0.27	1.37	0.29	1.45	0.44	2.19	0.48	2.41	
	DART:	0.48	2.39	0.46	2.28	0.45	2.25	1.15	5.74	0.67	3.35	
	RCRD:	0.65	3.23	0.64	3.20	0.51	2.57	1.42	7.10	0.88	4.42	
Central America & Caribbean Water	LTI:	0.34	1.68	0.22	1.11	0.21	1.03	0.00	0.00	0.05	0.23	
	DART:	0.45	2.24	0.37	1.86	0.29	1.44	0.07	0.36	0.23	1.16	
	RCRD:	0.90	4.48	0.54	2.72	0.58	2.89	0.39	1.97	0.42	2.09	
South America Land	LTI:	0.19	0.97	0.16	0.79	0.17	0.84	0.18	0.52	0.23	1.13	
	DART:	0.42	2.10	0.37	1.84	0.33	1.67	0.52	2.61	0.61	3.05	
	RCRD:	0.54	2.69	0.51	2.54	0.42	2.11	0.75	3.77	0.94	4.69	
South America Water	LTI:	0.26	1.28	0.27	1.33	0.31	1.57	0.29	1.47	0.40	2.01	
	DART:	0.38	1.92	0.48	2.38	0.50	2.49	0.46	2.31	0.57	2.83	
	RCRD:	0.54	2.71	0.66	3.29	0.88	4.38	0.92	4.62	1.04	5.21	
European Land	LTI:	0.24	1.18	0.34	1.69	0.26	1.29	0.28	1.41	0.22	1.12	
	DART:	0.30	1.50	0.39	1.94	0.31	1.55	0.31	1.56	0.27	1.35	
	RCRD:	0.35	1.77	0.48	2.39	0.35	1.76	0.38	1.89	0.31	1.57	
European Water	LTI:	0.19	0.97	0.27	1.34	0.27	1.37	0.31	1.55	0.22	1.11	
	DART:	0.39	1.93	0.44	2.20	0.51	2.55	0.49	2.44	0.37	1.85	
	RCRD:	0.73	3.64	0.85	4.24	0.82	4.11	0.80	3.99	0.73	3.66	
Africa Land	LTI:	0.32	1.59	0.38	1.92	0.38	1.88	0.34	1.72	0.41	2.03	
	DART:	0.86	4.28	0.86	4.32	0.50	2.50	0.49	2.47	0.56	2.82	
	RCRD:	1.04	5.18	1.07	5.36	0.84	4.19	1.00	5.00	1.18	5.92	
Africa Water	LTI:	0.18	0.89	0.16	0.81	0.19	0.95	0.28	1.39	0.27	1.37	
	DART:	0.41	2.06	0.30	1.48	0.36	1.78	0.47	2.34	0.52	2.61	
	RCRD:	0.65	3.26	0.52	2.61	0.55	2.73	0.81	4.07	0.96	4.80	
Middle East Land	LTI:	0.14	0.68	0.14	0.72	0.17	0.86	0.22	1.12	0.18	0.89	
	DART:	0.32	1.59	0.39	1.95	0.39	1.96	0.46	2.30	0.46	2.28	
	RCRD:	0.54	2.70	0.65	3.23	0.73	3.65	0.83	4.16	0.86	4.31	
Middle East Water	LTI:	0.08	0.42	0.08	0.39	0.06	0.31	0.12	0.60	0.23	1.15	
	DART:	0.26	1.29	0.22	1.10	0.28	1.39	0.28	1.38	0.43	2.14	
	RCRD:	0.35	1.74	0.29	1.47	0.46	2.28	0.53	2.67	0.78	3.89	
Asia Pacific Land	LTI:	0.24	1.18	0.22	1.08	0.21	1.05	0.31	1.56	0.20	1.00	
	DART:	0.31	1.53	0.58	2.89	0.66	3.28	0.59	2.97	0.51	2.55	
	RCRD:	0.45	2.27	0.94	4.70	1.06	5.32	1.02	5.08	0.93	4.67	
Asia Pacific Water	LTI:	0.15	0.73	0.15	0.76	0.18	0.89	0.14	0.69	0.17	0.87	
	DART:	0.30	1.48	0.35	1.73	0.31	1.53	0.30	1.51	0.40	1.99	
	RCRD:	0.40	2.02	0.54	2.72	0.47	2.33	0.63	3.17	0.75	3.76	
Australasia Land	LTI:	0.23	1.17	For Australasia data prior to 2014 contact IADC								
	DART:	0.70	3.50									
	RCRD:	1.37	6.83									
Australasia Water	LTI:	0.06	0.30	For Australasia data prior to 2014 contact IADC								
	DART:	0.43	2.13									
	RCRD:	0.61	3.05									
INDUSTRY TOTALS	LTI:	0.23	1.14	0.26	1.29	0.26	1.31	0.36	1.79	0.39	1.95	
	DART:	0.48	2.4096	0.52	2.576	0.53	2.645	0.69	3.453	0.76	3.809	
	RCRD:	0.75	3.76	0.81	4.03	0.88	4.41	1.23	6.13	1.33	6.66	

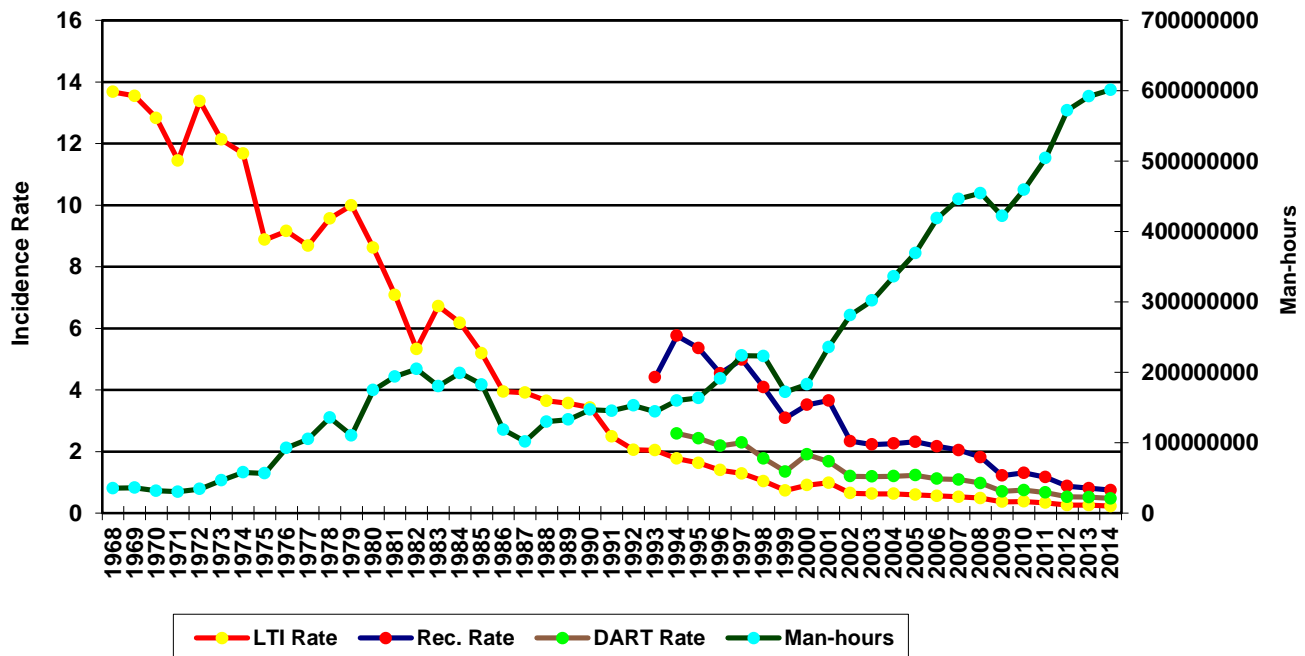
2014 - IADC INDUSTRY TOTALS (Table 3)

	LAND	WATER	COMBINED
TOTAL MANHOURS	366,212,338	235,139,633	601,351,971
TOTAL MEDICAL TREATMENT INCIDENTS	562	253	815
TOTAL RESTRICTED WORK INCIDENTS	554	211	765
TOTAL LOST TIME INCIDENTS	482	181	663
TOTAL FATALITIES	13	8	21
TOTAL RECORDABLES	1611	653	2,264
MTO INCIDENCE RATE	0.31	0.22	0.27
RWC INCIDENCE RATE	0.30	0.18	0.25
LTI INCIDENCE RATE	0.27	0.16	0.23
LTI FREQUENCY RATE	1.35	0.80	1.14
DART INCIDENCE RATE	0.57	0.34	0.48
DART FREQUENCY RATE	2.86	1.70	2.40
RECORDABLE INCIDENCE RATE	0.88	0.56	0.75
RECORDABLE FREQUENCY RATE	4.40	2.78	3.76

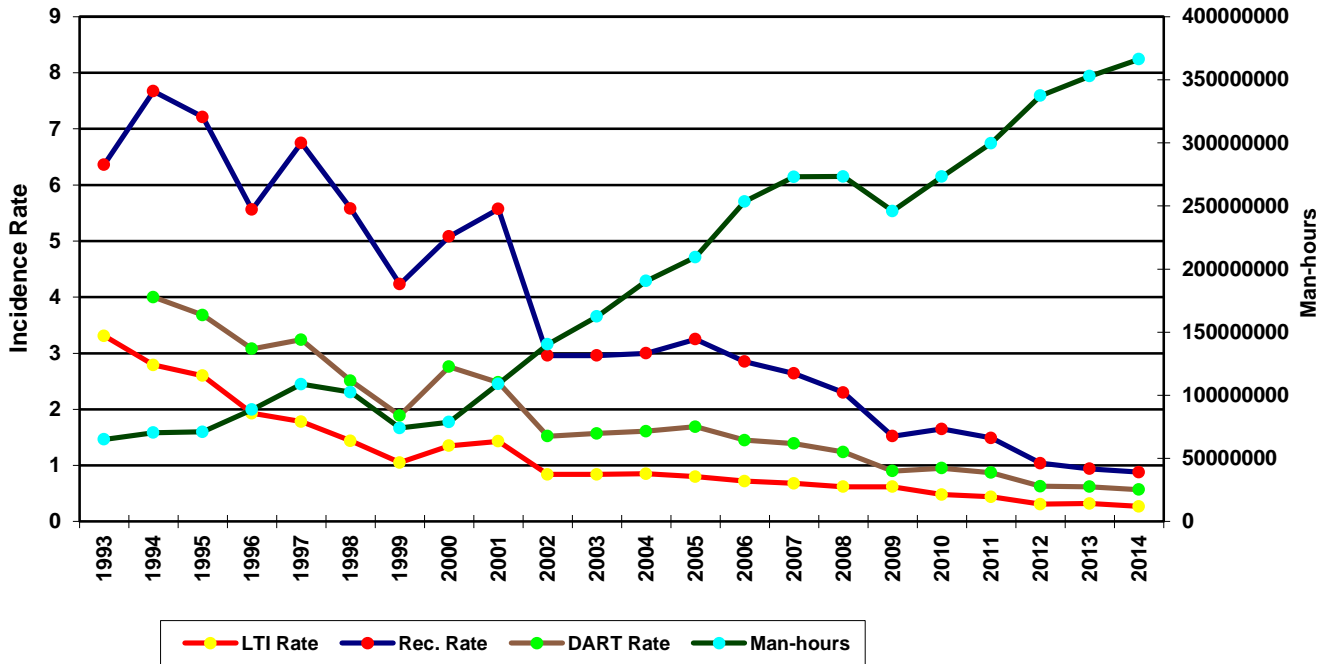
MEDICAL TREATMENT INCIDENCE RATE = MTOs X 200,000 / MAN-HOURS (LTIs NOT INCLUDED)
 RESTRICTED WORK INCIDENCE RATE = RWCs X 200,000 / MAN-HOURS (LTIs NOT INCLUDED)
 LOST TIME INCIDENCE RATE = (LTIs+FTLs) X 200,000 / MAN-HOURS
 LOST TIME FREQUENCY RATE = (LTIs+FTLs) X 1,000,000 / MAN-HOURS
 DART INCIDENCE RATE = (LTIs+FTLs+RWCs) X 200,000 / MAN-HOURS
 DART FREQUENCY RATE = (LTIs+FTLs+RWCs) X 1,000,000 / MAN-HOURS
 RECORDABLE INCIDENCE RATE = RECORDABLES X 200,000 / MAN-HOURS
 RECORDABLE FREQUENCY RATE = RECORDABLES X 1,000,000 / MAN-HOURS

Number of participating companies: 107 – Total; 70 – Land; 55 – Water

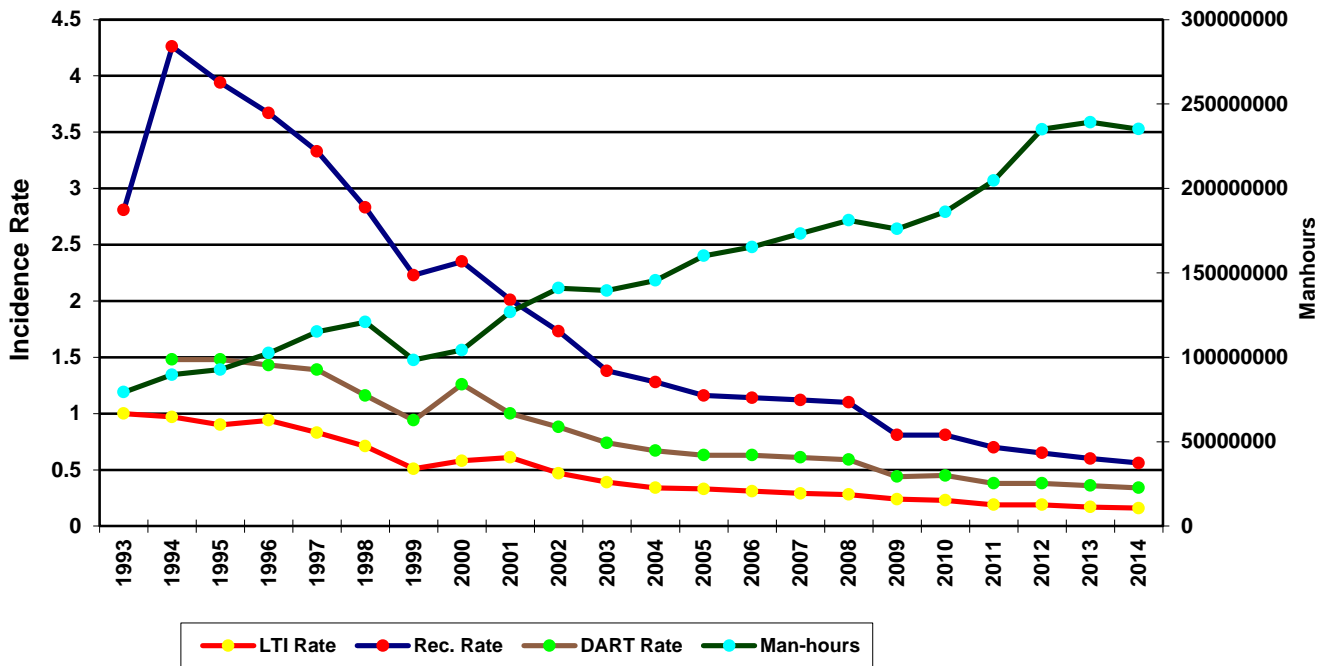
Total Industry LTI & Recordable Incidence Rates vs Man-hours (Figure 1)



Total Industry Land LTI & Recordable Incidence Rates vs Man-hours (Figure 2)



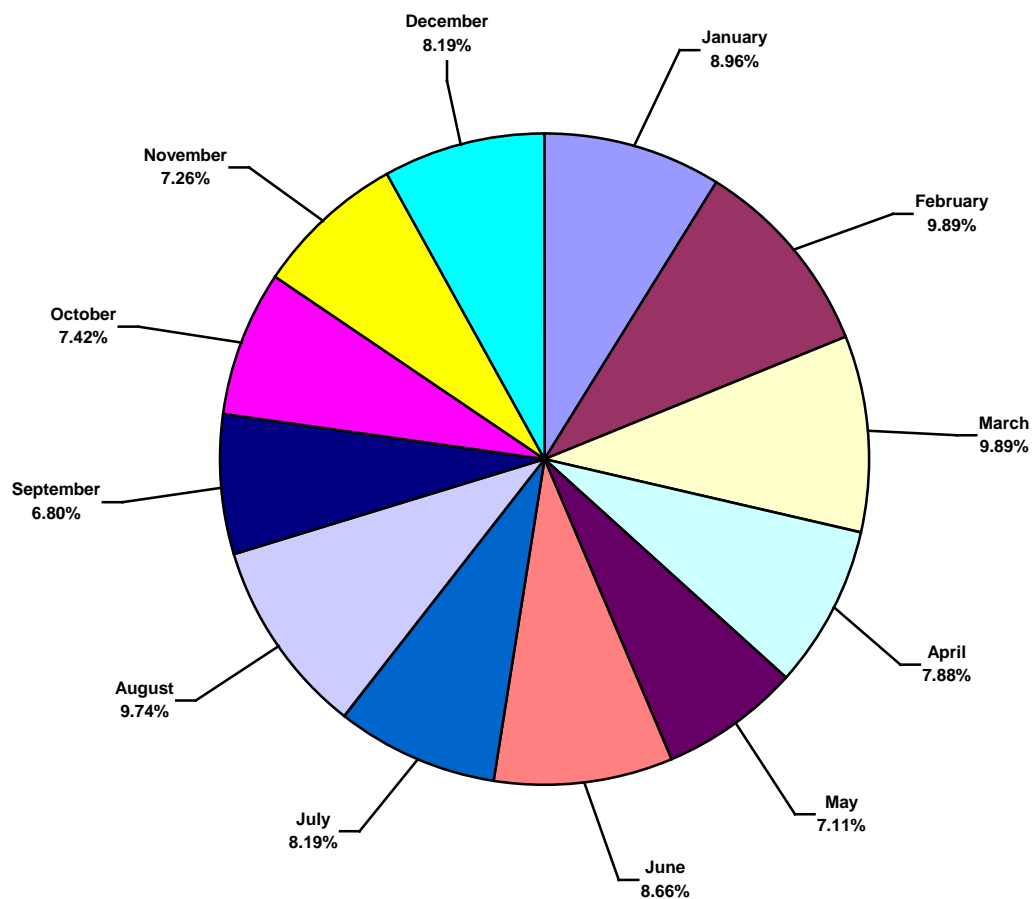
Total Industry Water LTI & Recordable Incidence Rates vs Man-hours (Figure 3)



IADC 2014 Total Industry Charts

Total Industry Lost Time Incidents by Month (Chart 1)

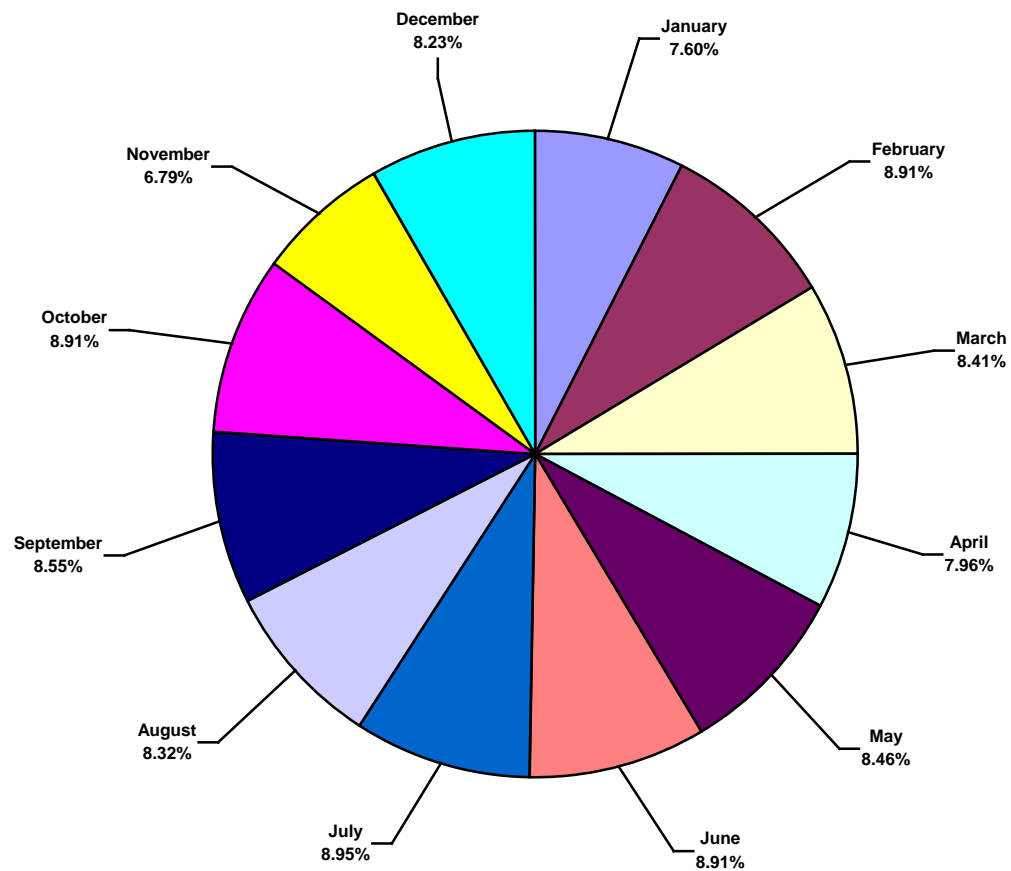
Based on 647 Incidents



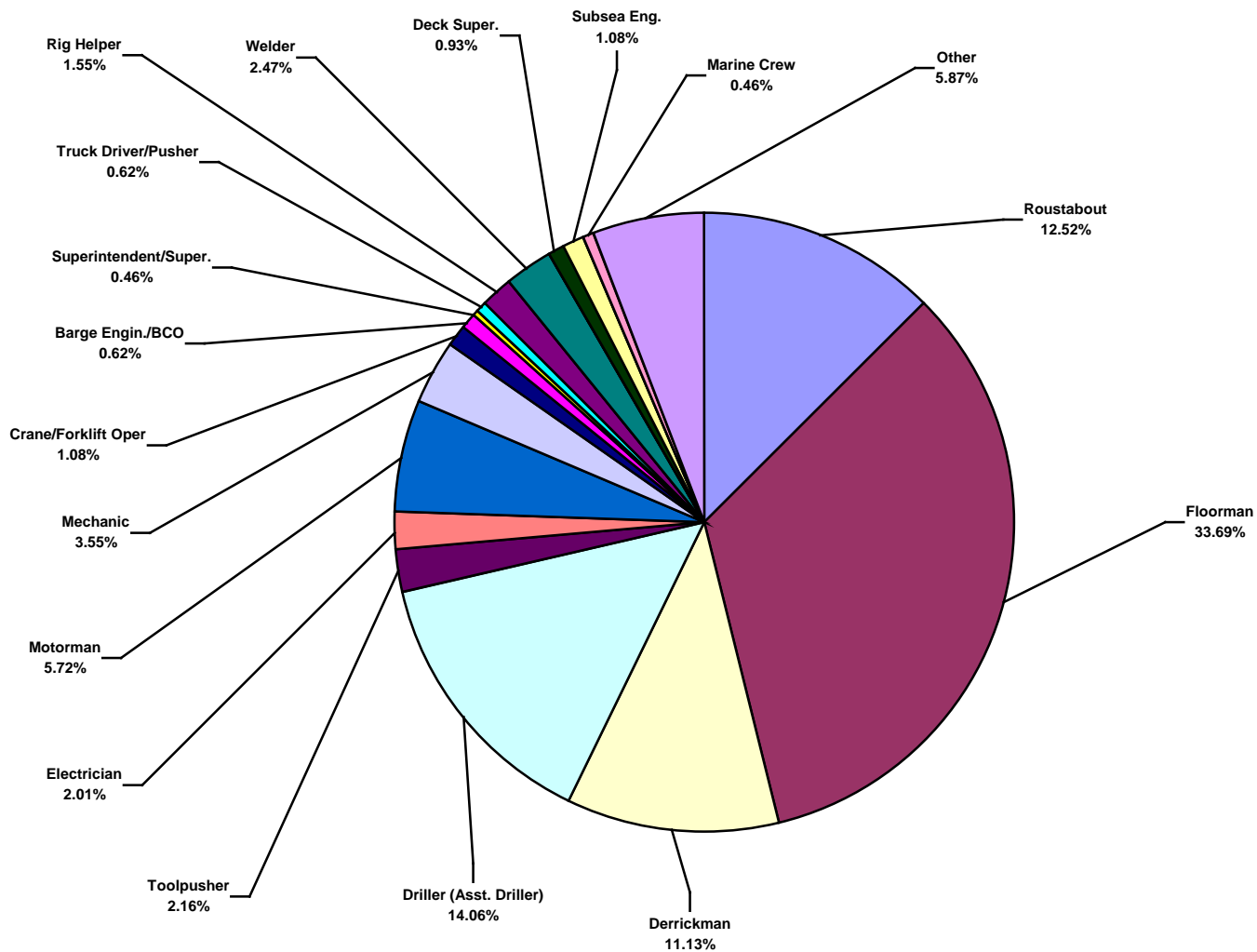
Total Industry Recordable Incidents by Month (Chart 2)

Based on 2223 Incidents

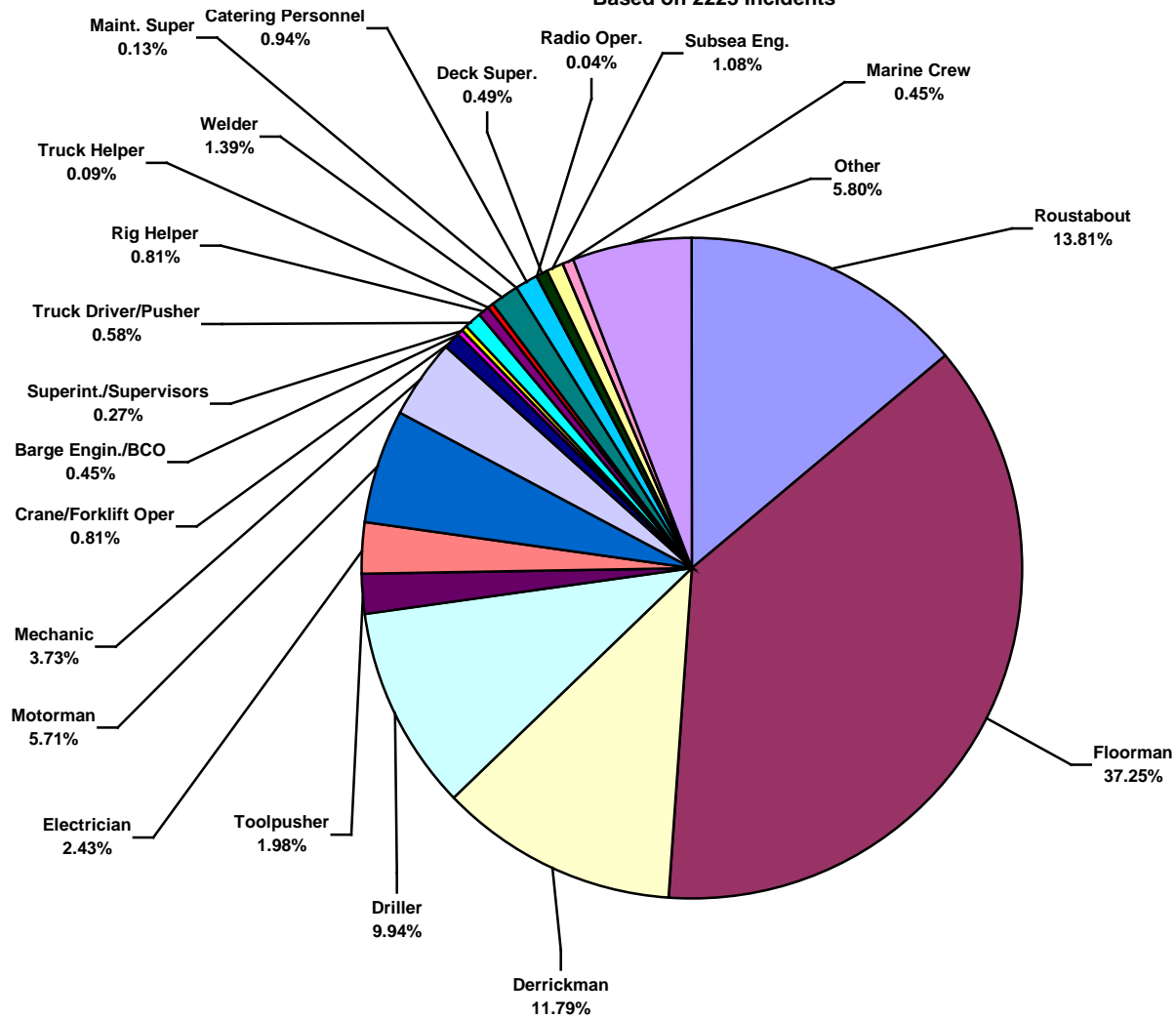
Note: Some pie charts may not appear to show all the slices due to the small percentage the slice represents.



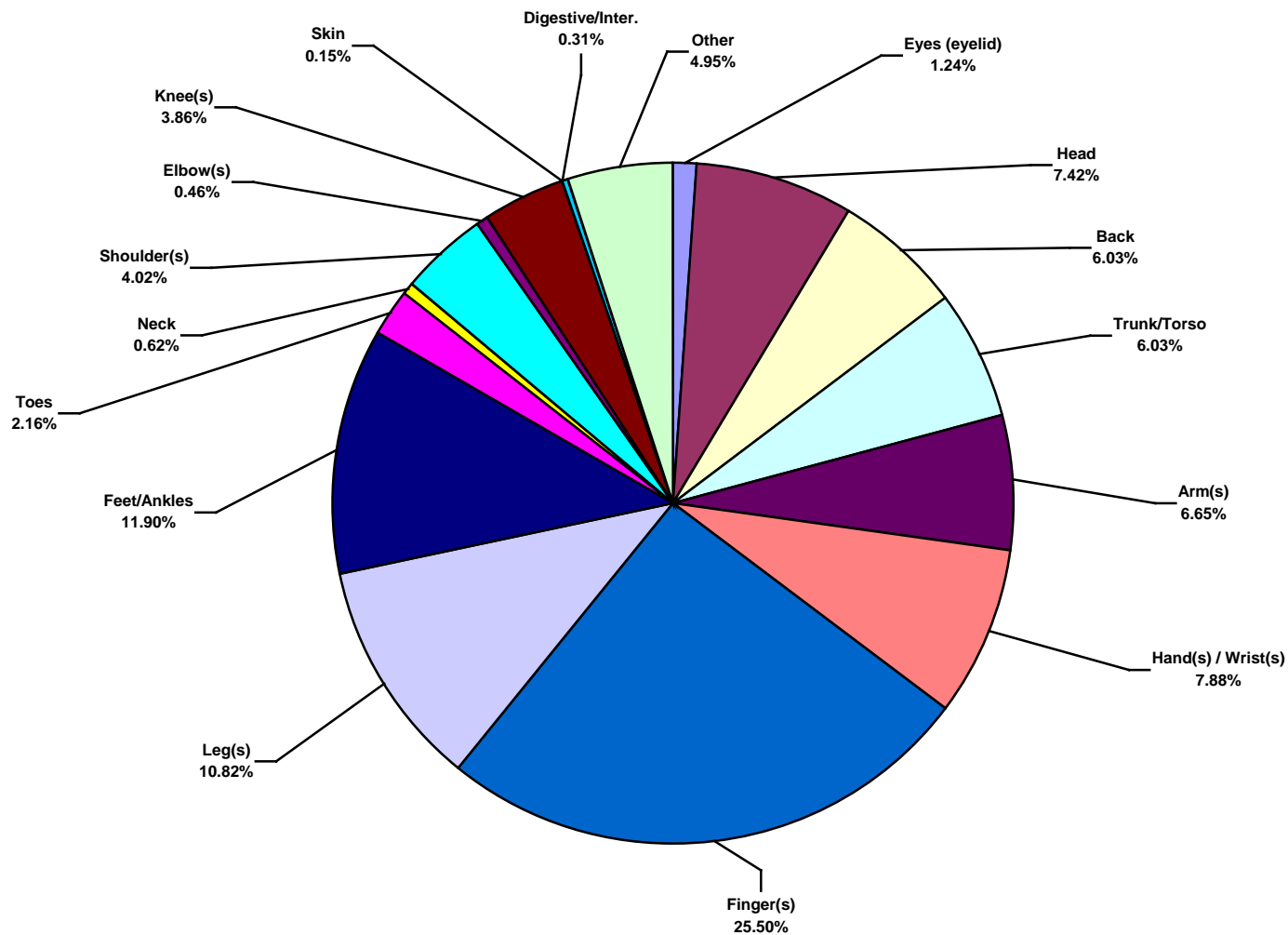
Total Industry Lost Time Incidents by Occupation (Chart 3)
Based on 647 Incidents



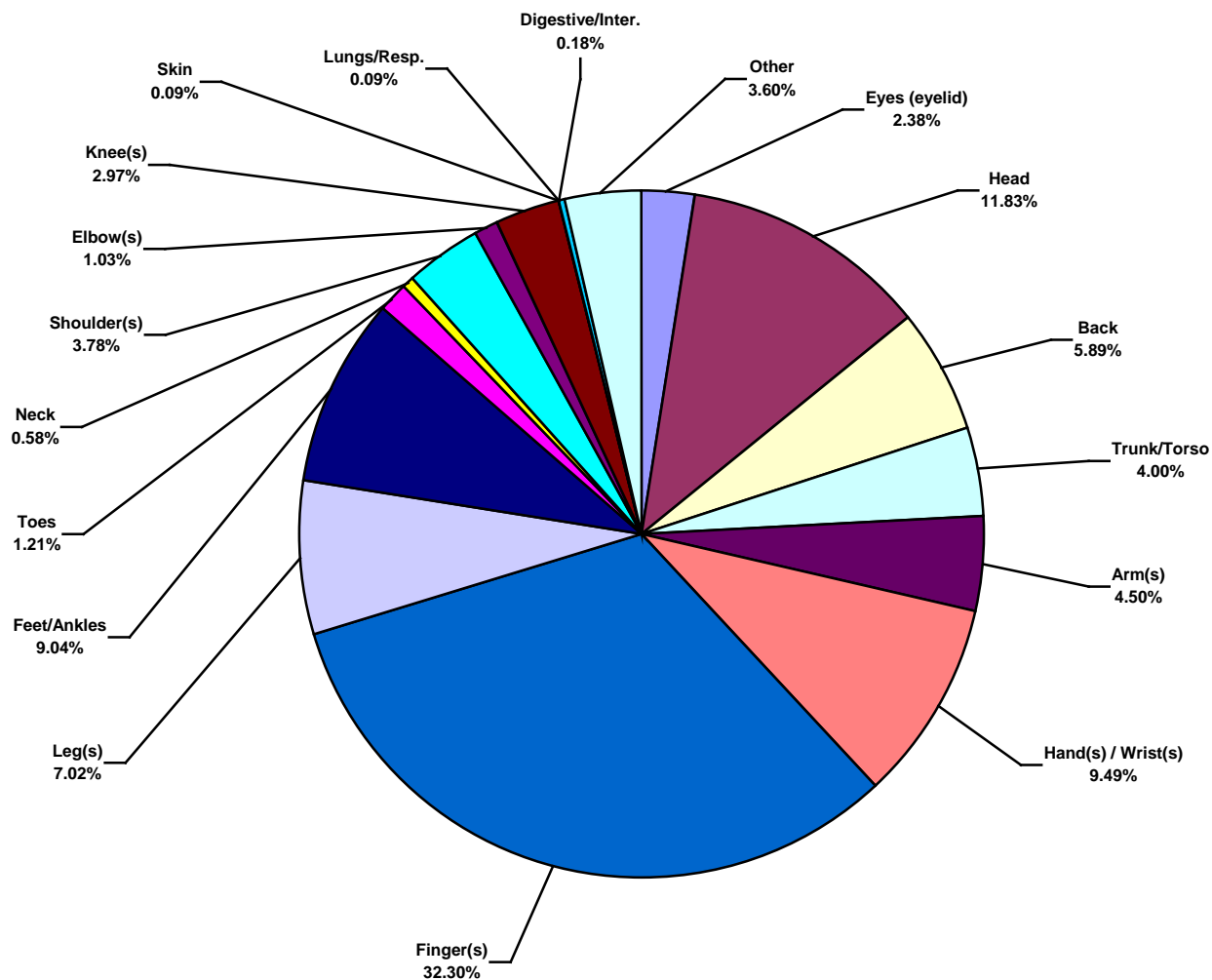
Total Industry Recordable Incidents by Occupation (Chart 4)
Based on 2223 Incidents



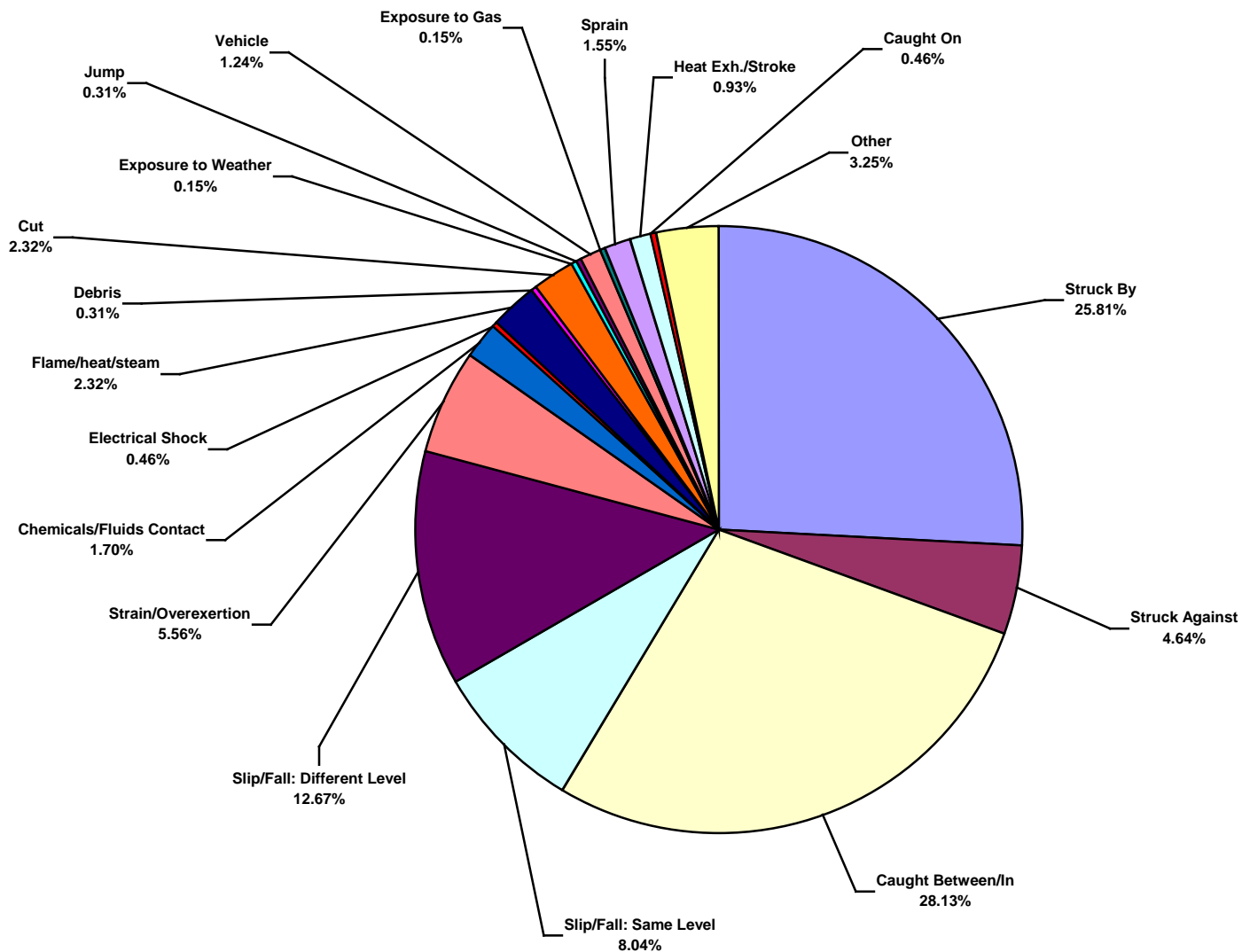
Total Industry Lost Time Incidents by Body Part (Chart 5)
Based on 647 Incidents



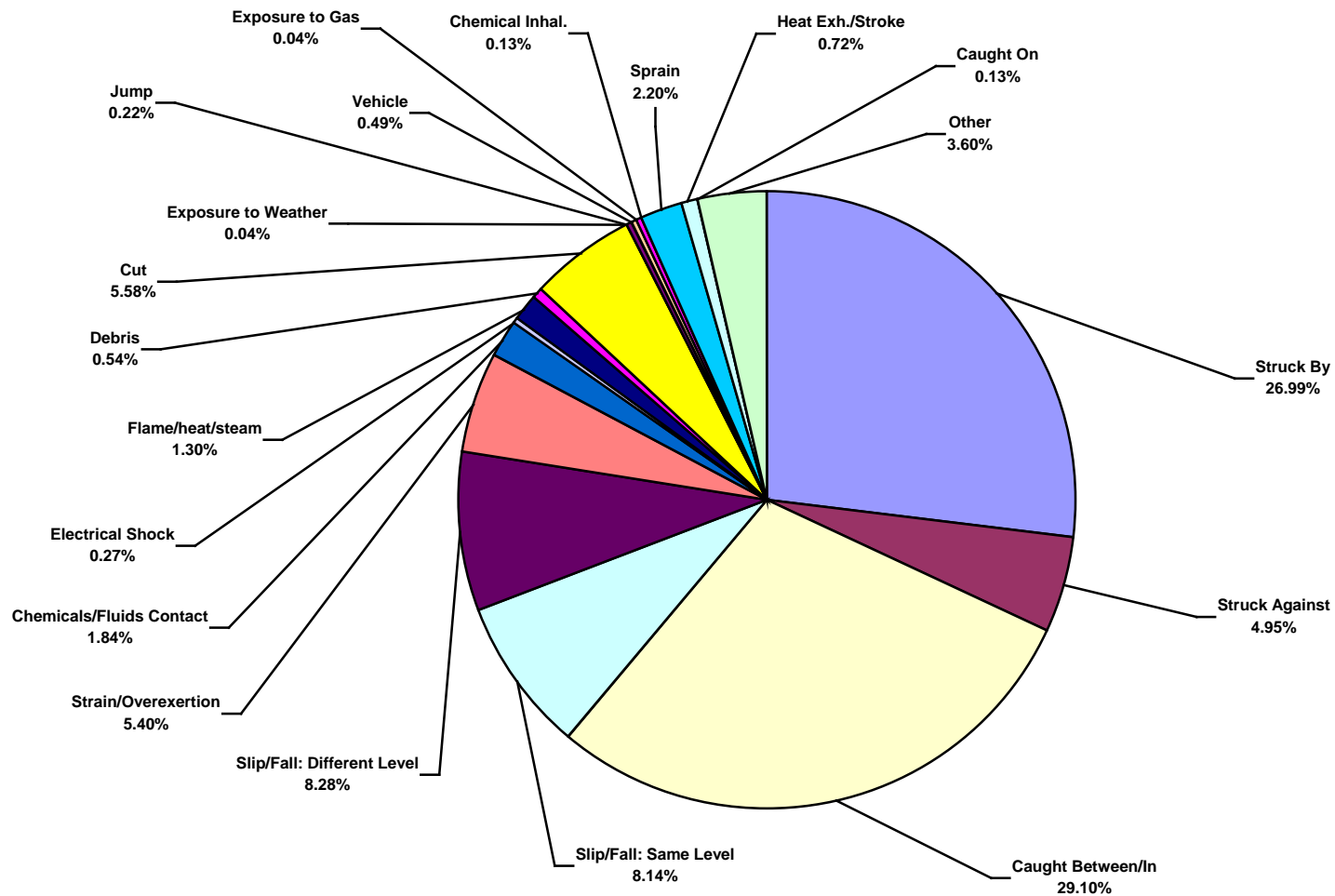
Total Industry Recordable Incidents by Body Part (Chart 6)
Based on 2223 Incidents



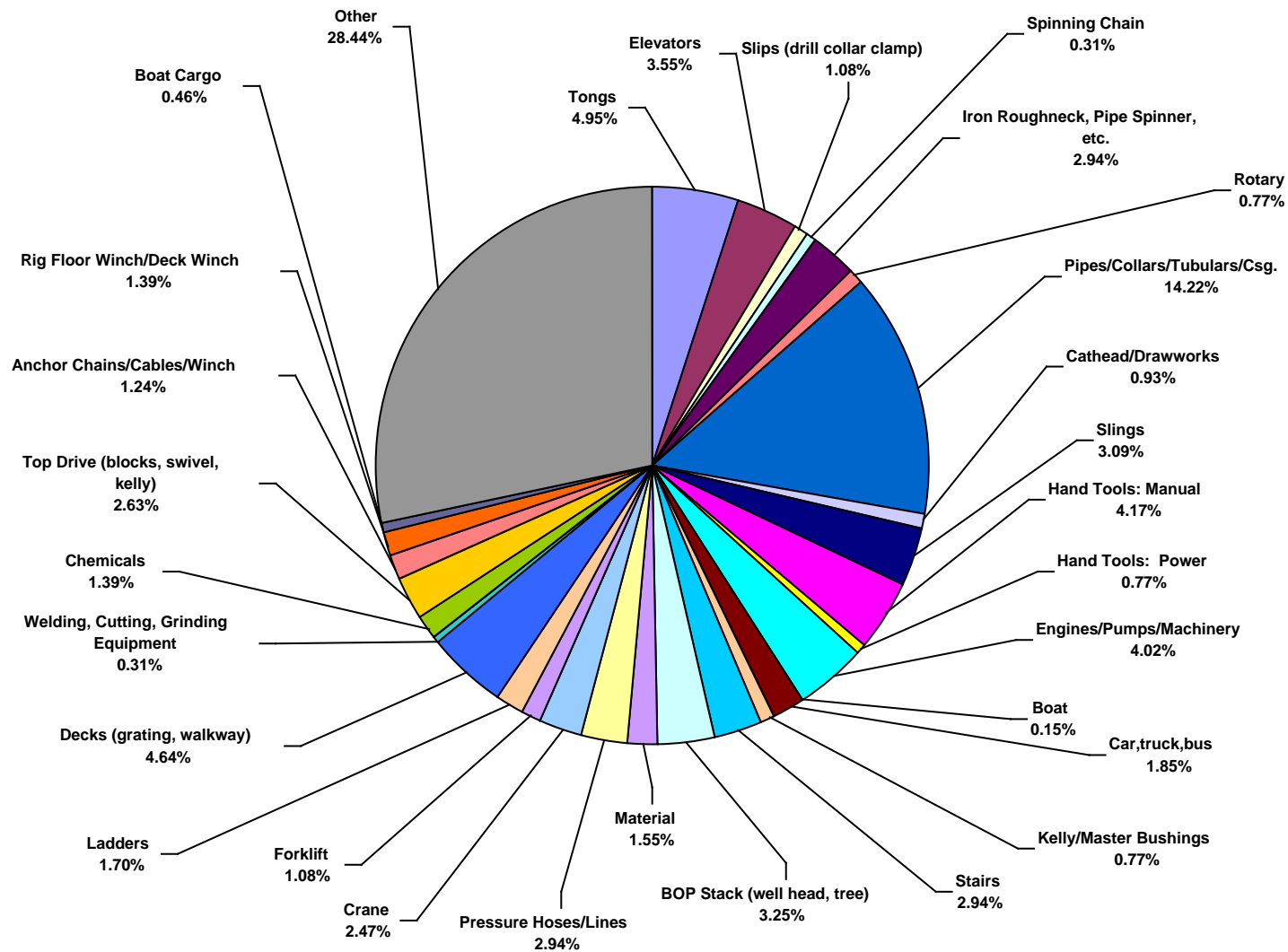
Total Industry Lost Time Incidents by Incident Type (Chart 7)
Based on 647 Incidents



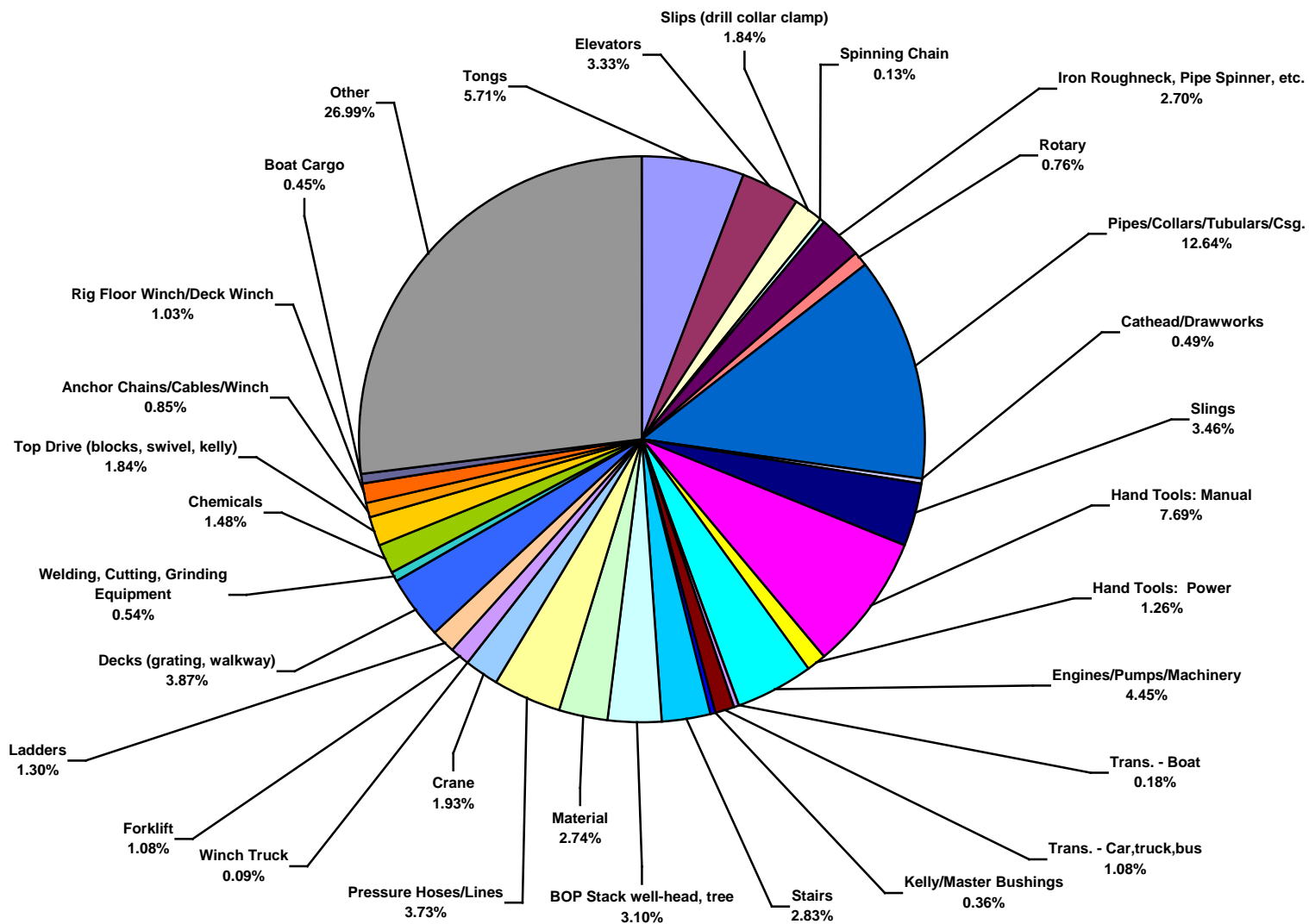
Total Industry Recordable Incidents by Incident Type (Chart 8)
Based on 2223 Incidents



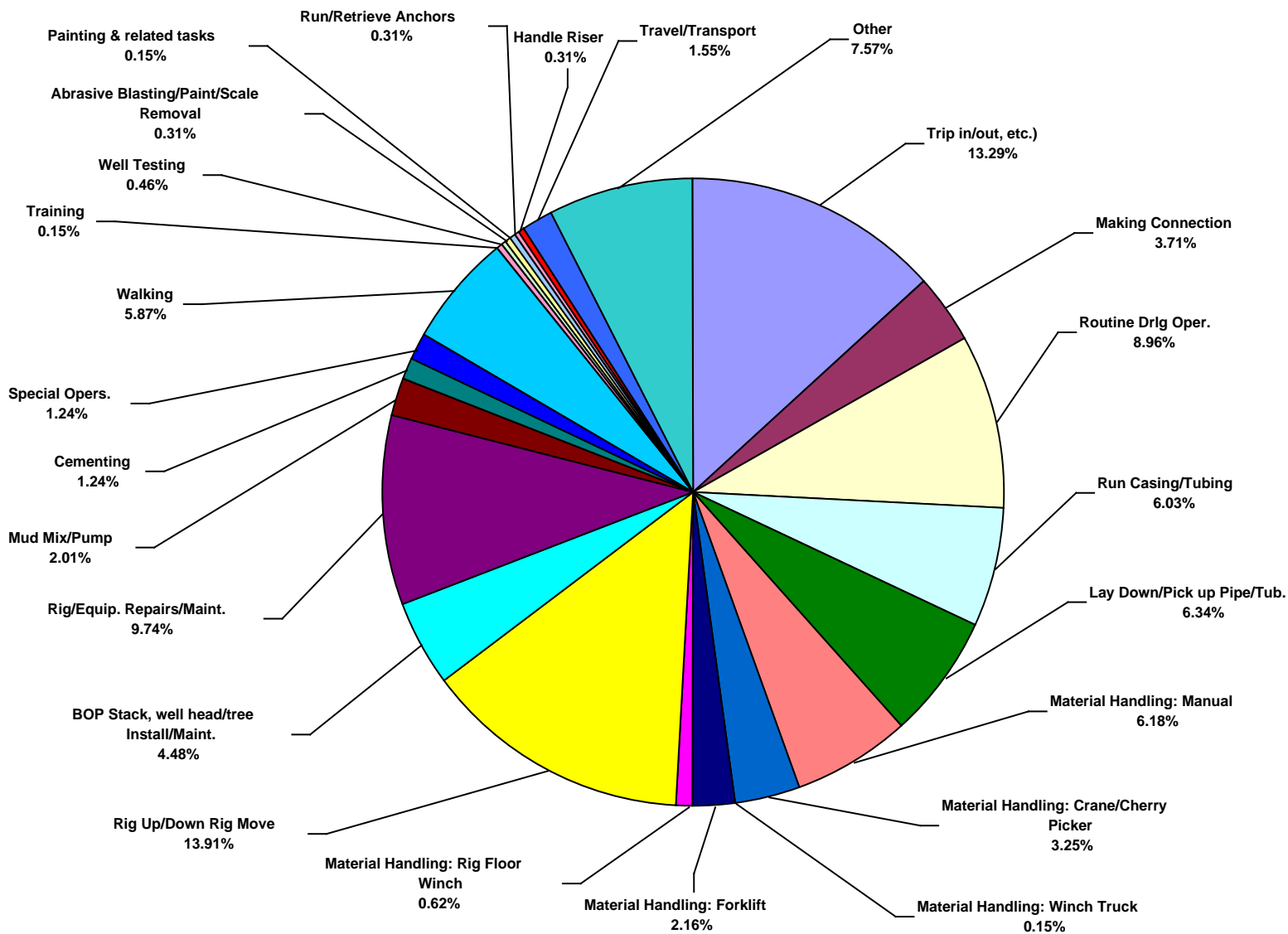
Total Industry Lost Time Incidents by Equipment (Chart 9)
Based on 647 Incidents



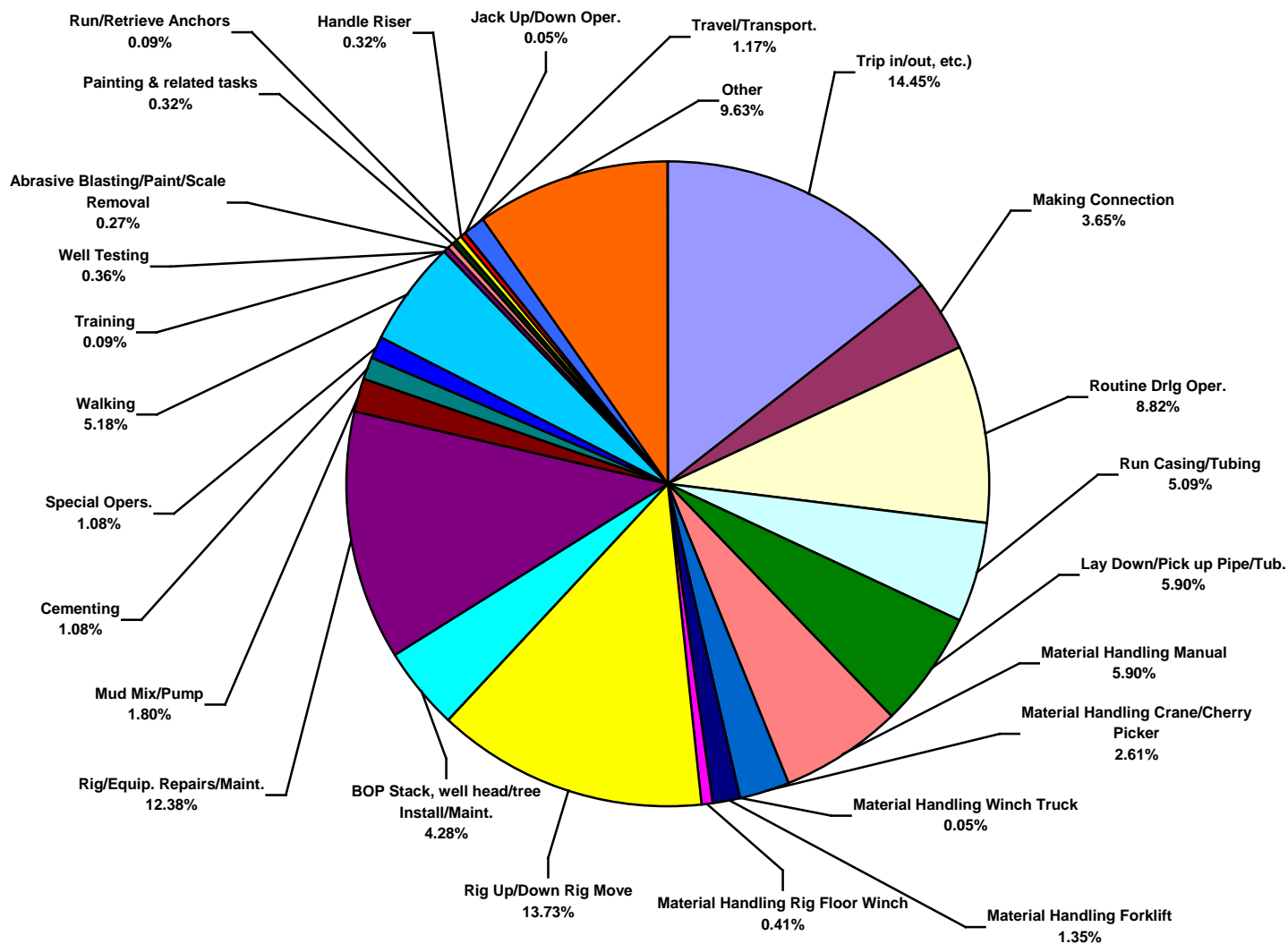
Total Industry Recordable Incidents by Equipment (Chart 10)
Based on 2223 Incidents



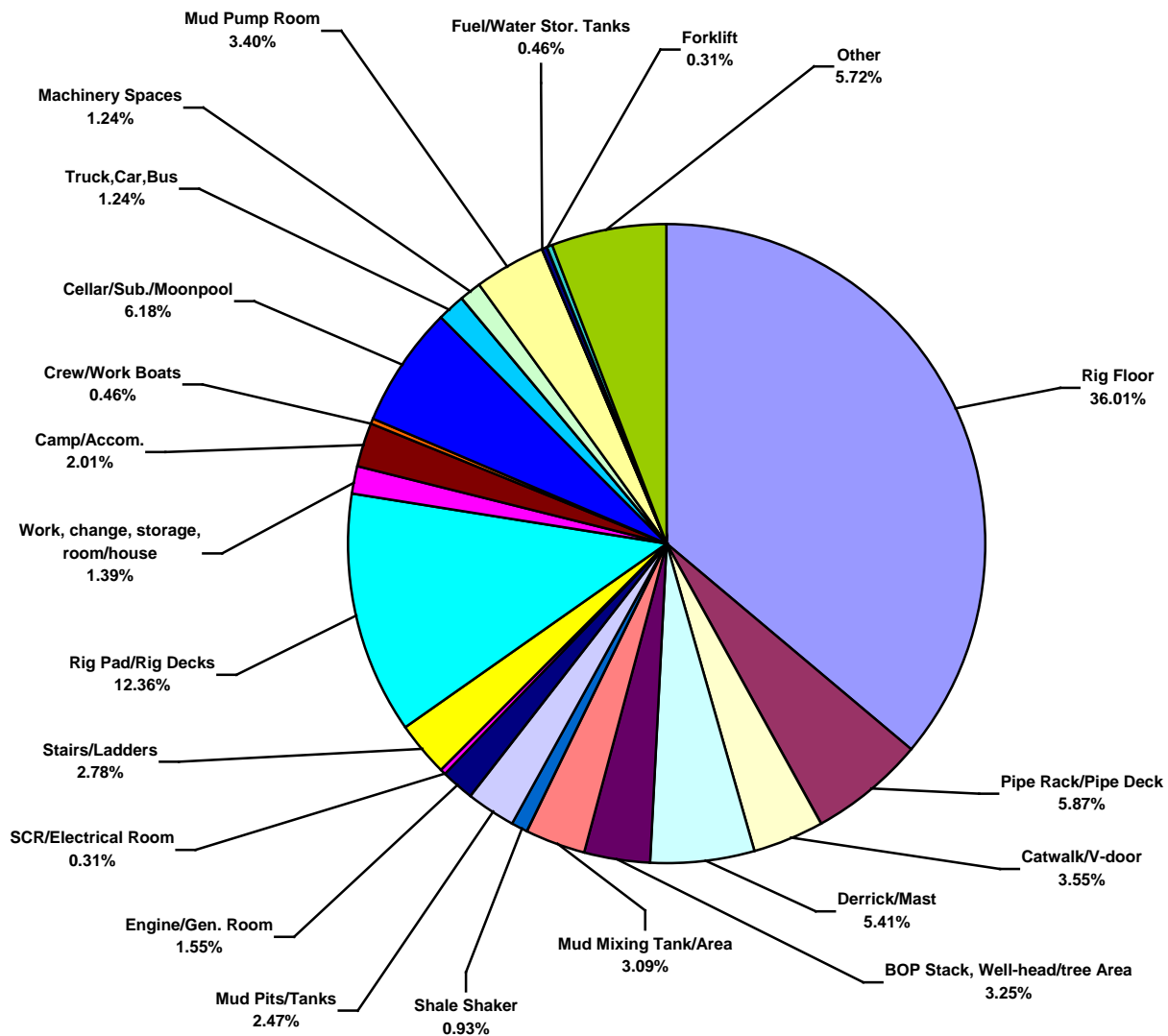
Total Industry Lost Time Incidents by Operation (Chart 11)
Based on 647 Incidents



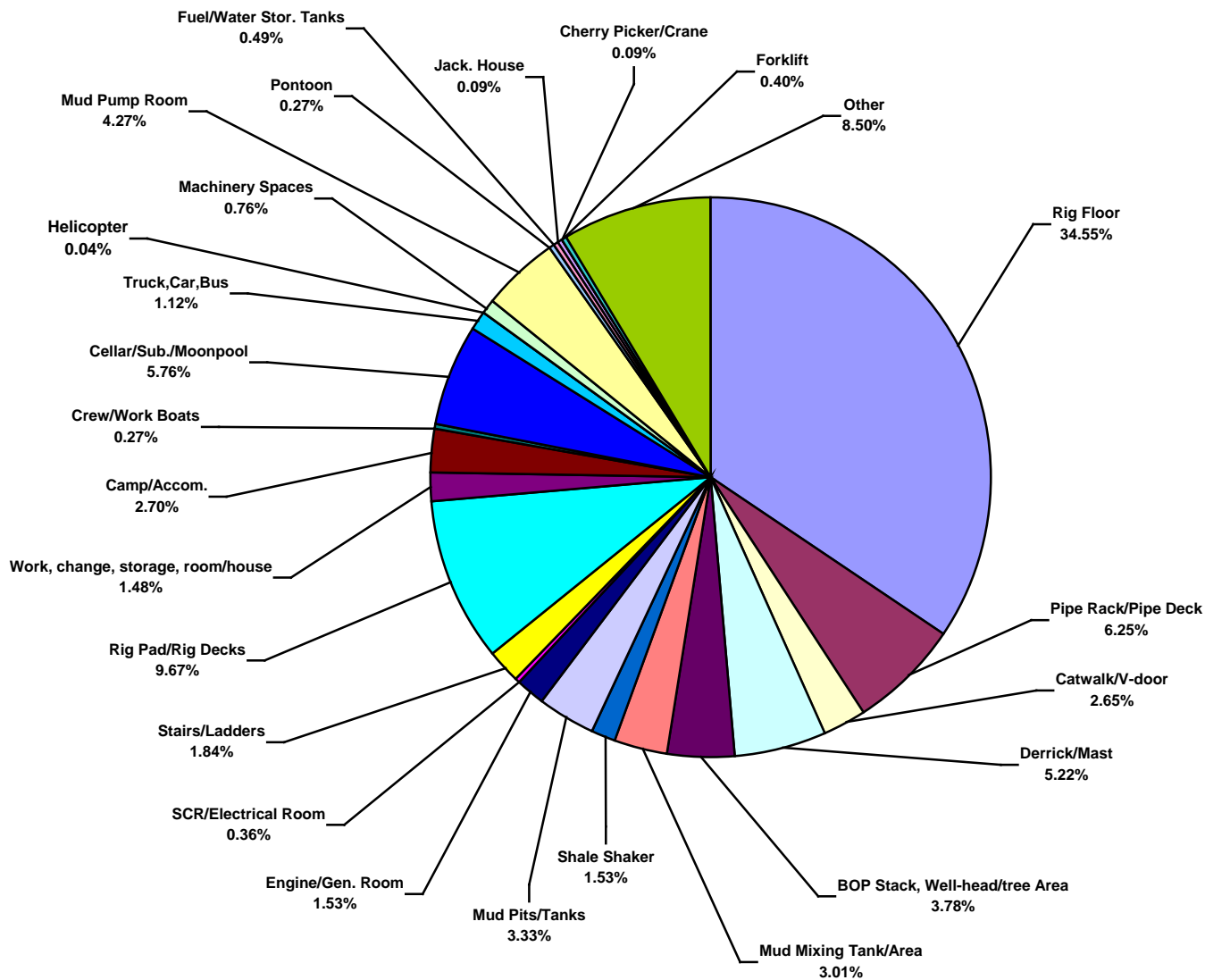
Total Industry Recordable Incidents by Operation (Chart 12)
Based on 2222 Incidents



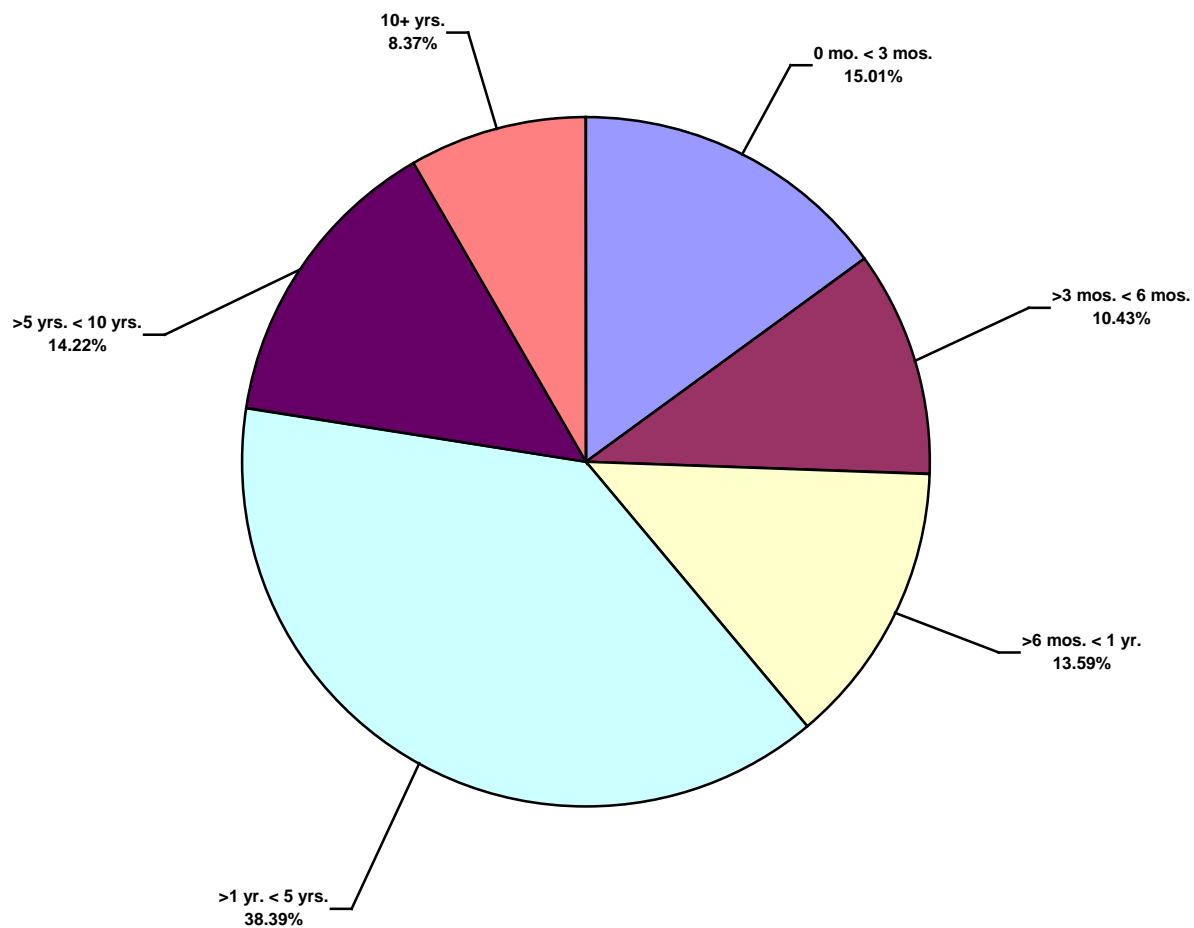
Total Industry Lost Time Incidents by Location (Chart 13)
Based on 647 Incidents



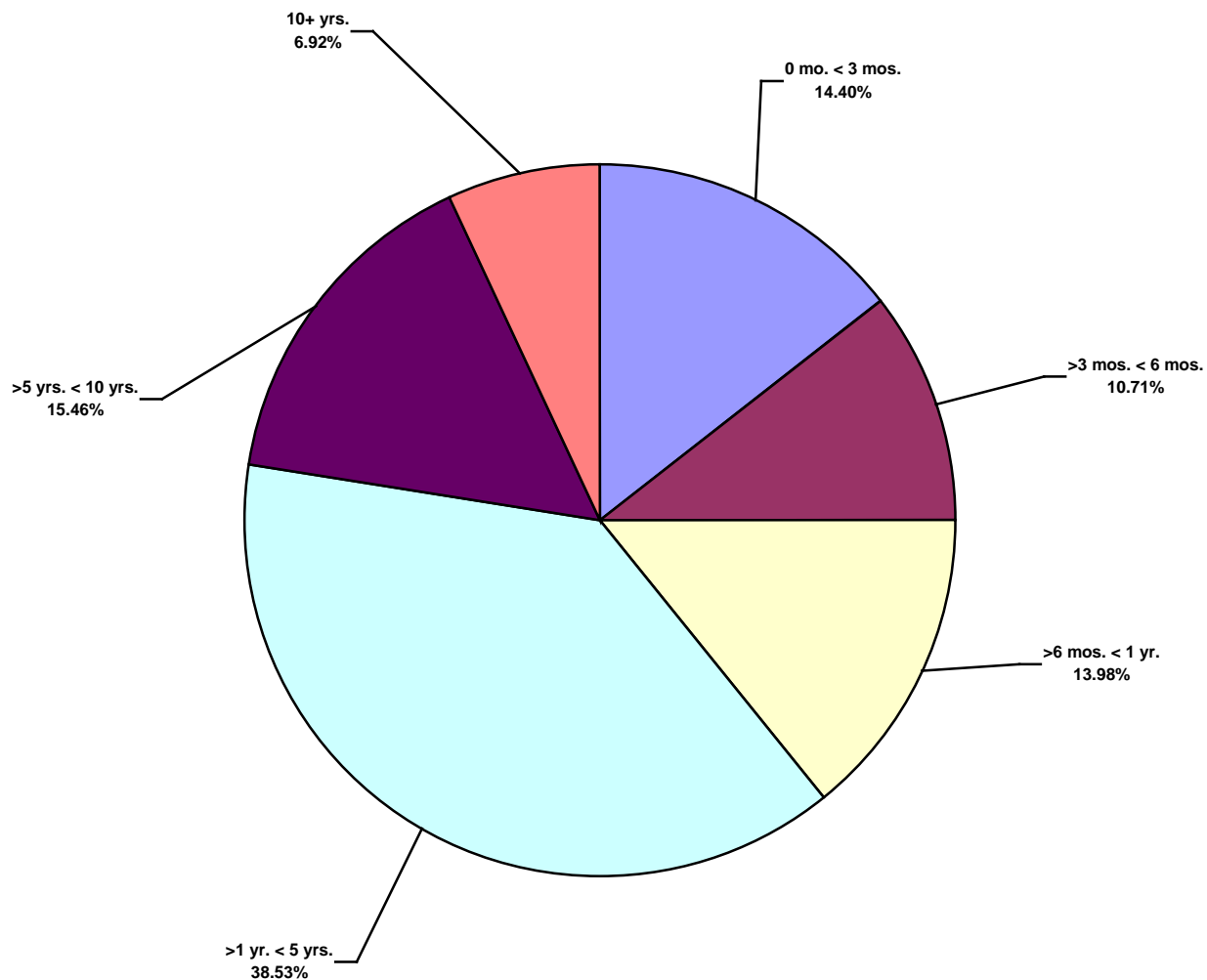
Total Industry Recordable Incidents by Location (Chart 14)
Based on 2223 Incidents



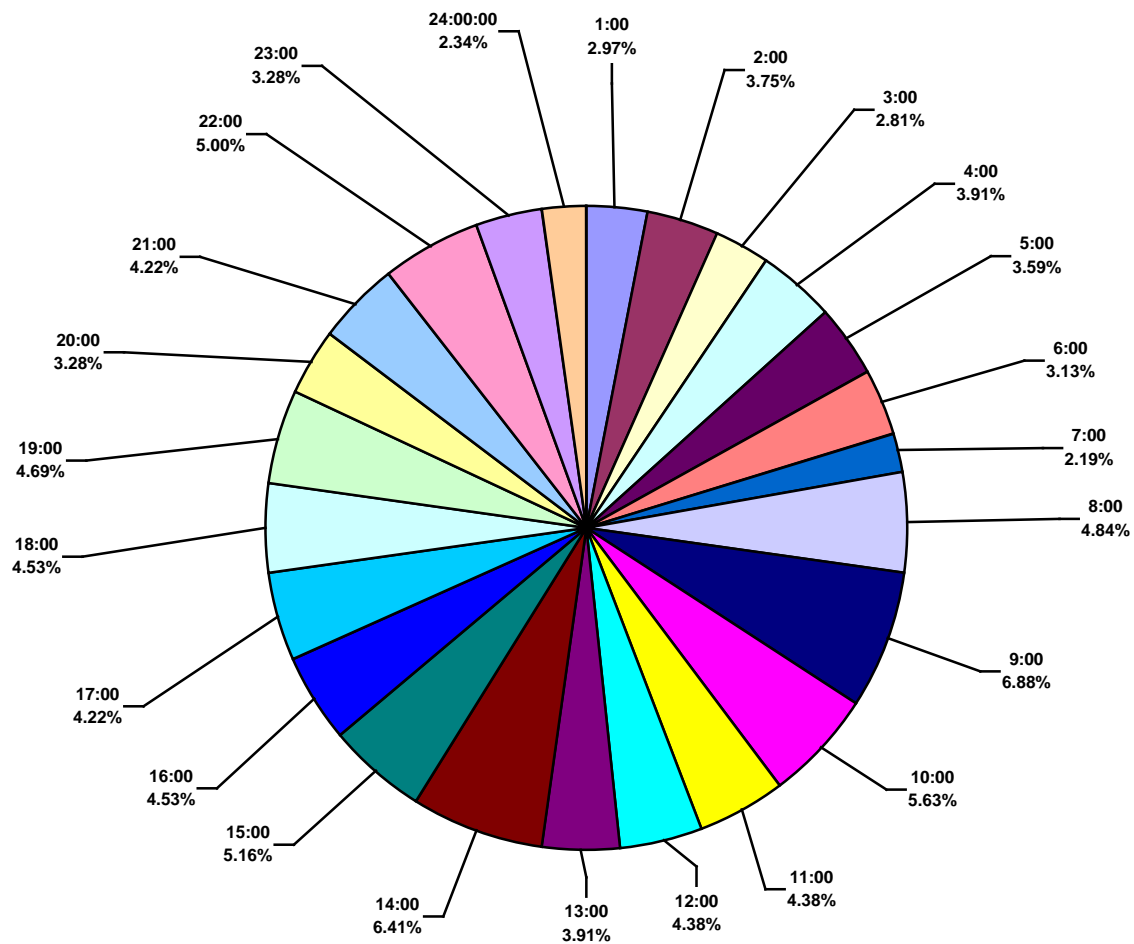
Total Industry Lost Time Incidents by Time in Service (Chart 15)
Based on 633 Incidents



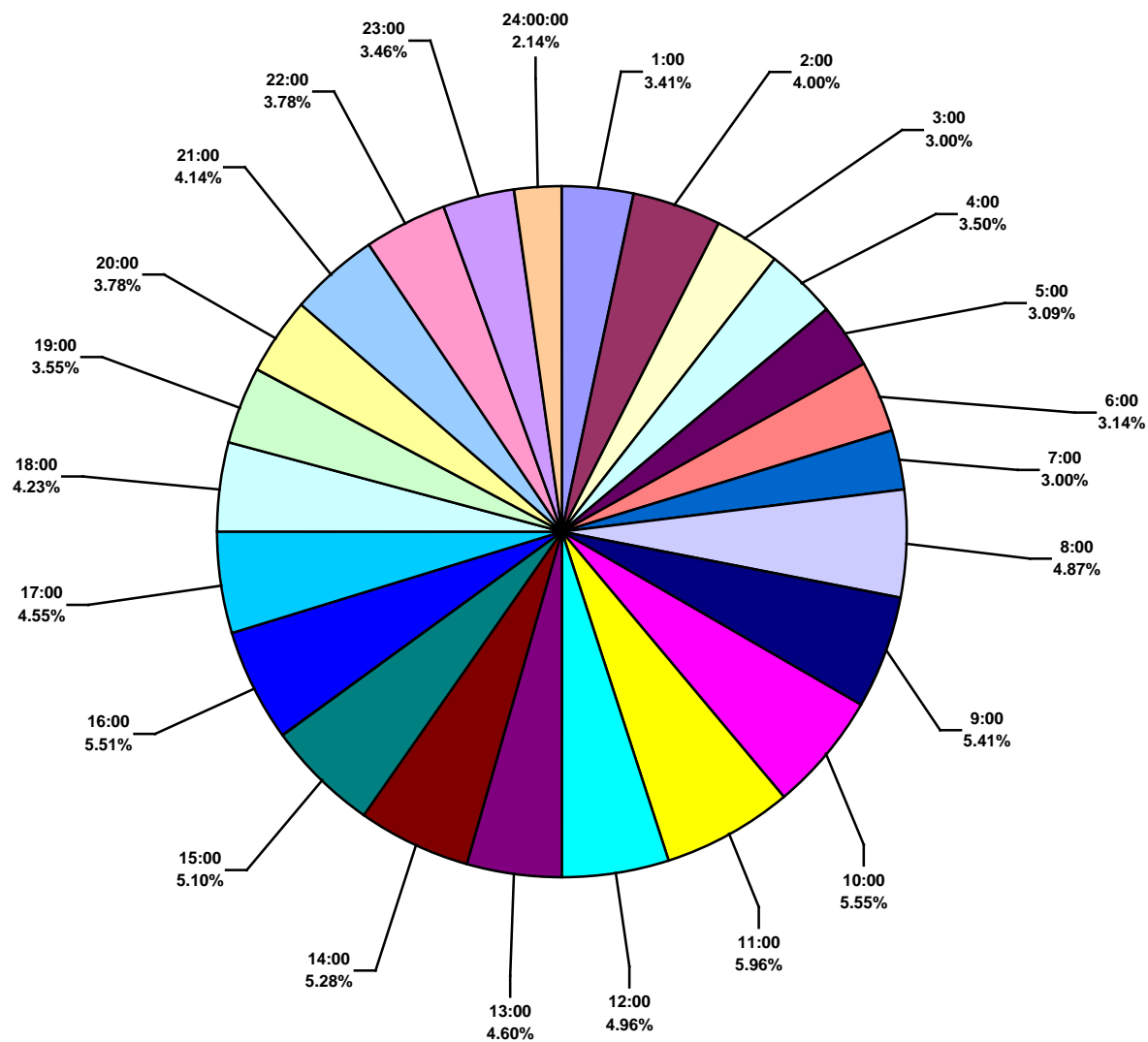
Total Industry Recordable Incidents by Time in Service (Chart 16)
Based on 2170 Incidents



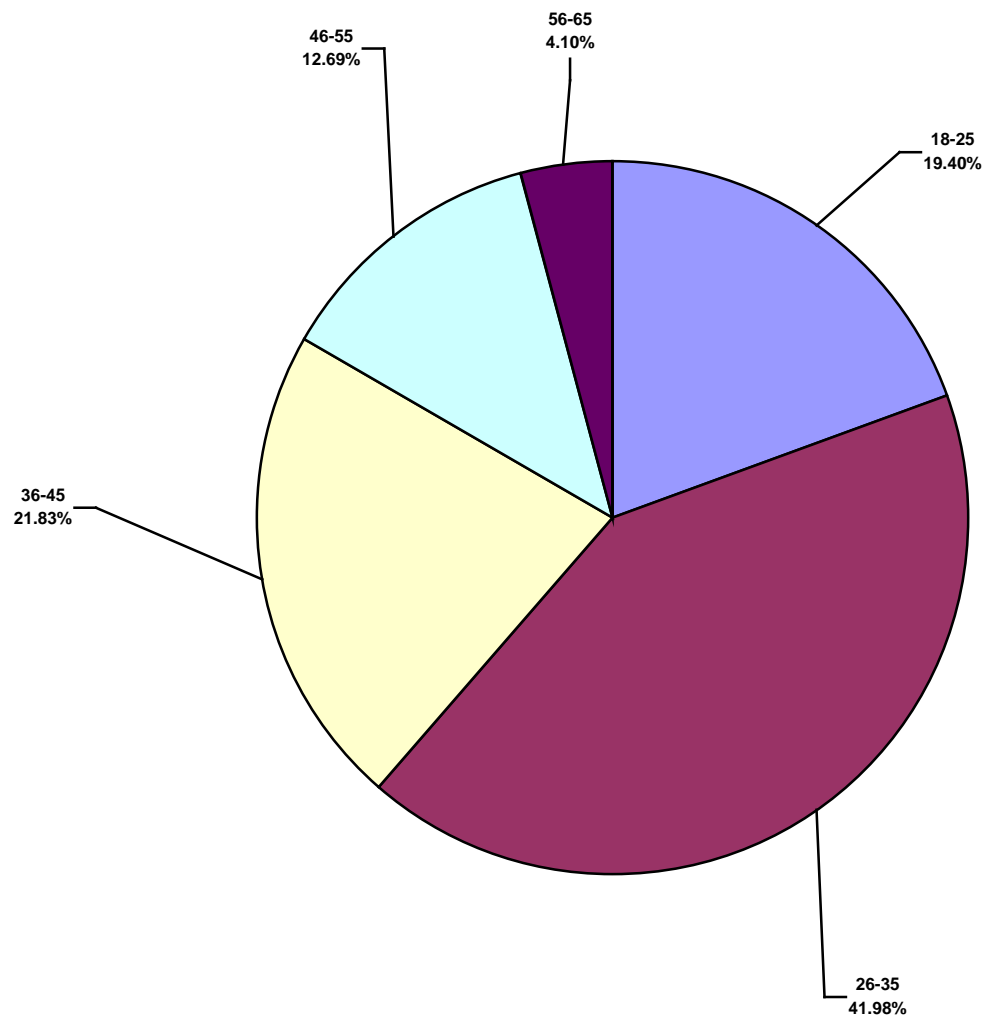
Total Industry Lost Time Incidents by Time of Day (Chart 17)
Based on 641 Incidents



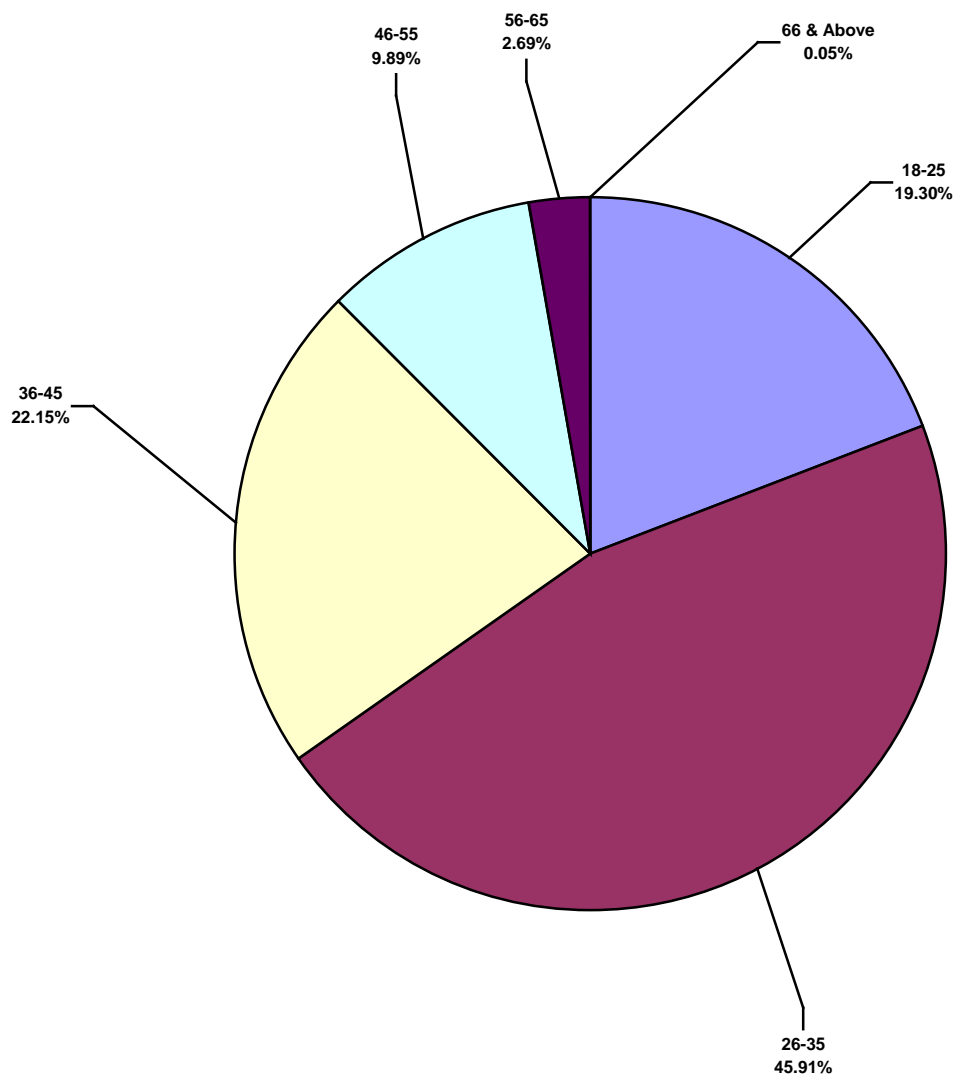
Total Industry Recordable Incidents by Time of Day (Chart 18)
Based on 2198 Incidents



Total Industry Lost Time Incidents by Age (Chart 19)
Based on 536 Incidents



Total Industry Recordable Incidents by Age (Chart 20)
Based on 1860 Incidents





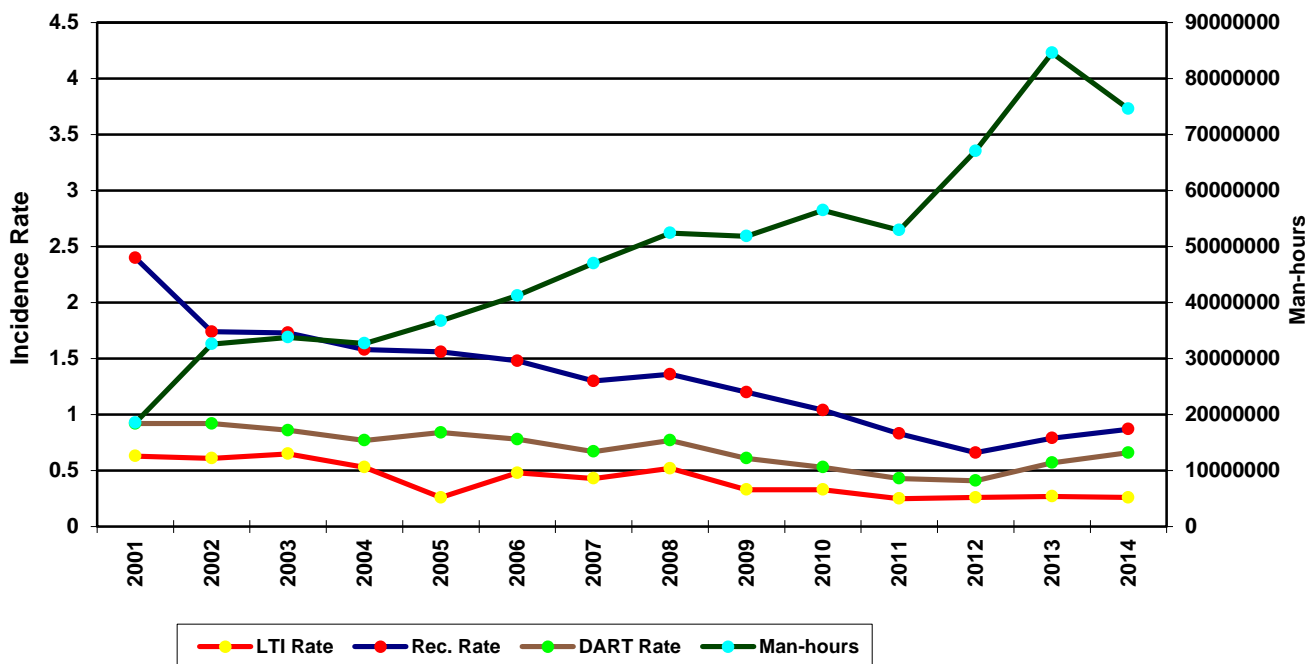
**2014 ISP Program Regional Totals
Combined Land & Water
IADC 2014 Africa Totals (Table 4)**

	LAND	WATER	COMBINED
TOTAL MANHOURS	42,085,855	32,506,703	74,592,558
TOTAL MEDICAL TREATMENT INCIDENTS	38	39	77
TOTAL RESTRICTED WORK INCIDENTS	113	38	151
TOTAL LOST TIME INCIDENTS	66	28	94
TOTAL FATALITIES	1	1	2
TOTAL RECORDABLES	218	106	324
MTO INCIDENCE RATE	0.18	0.24	0.21
RWC INCIDENCE RATE	0.54	0.23	0.40
LTI INCIDENCE RATE	0.32	0.18	0.26
LTI FREQUENCY RATE	1.59	0.89	1.29
DART INCIDENCE RATE	0.86	0.41	0.66
DART FREQUENCY RATE	4.28	2.06	3.31
RECORDABLE INCIDENCE RATE	1.04	0.65	0.87
RECORDABLE FREQUENCY RATE	5.18	3.26	4.34

MEDICAL TREATMENT INCIDENCE RATE = MTOs X 200,000 / MAN-HOURS (LTIs NOT INCLUDED)
 RESTRICTED WORK INCIDENCE RATE = RWCs X 200,000 / MAN-HOURS (LTIs NOT INCLUDED)
 LOST TIME INCIDENCE RATE = (LTIs+FTLs) X 200,000 / MAN-HOURS
 LOST TIME FREQUENCY RATE = (LTIs+FTLs) X 1,000,000 / MAN-HOURS
 DART INCIDENCE RATE = (LTIs+FTLs+RWCs) X 200,000 / MAN-HOURS
 DART FREQUENCY RATE = (LTIs+FTLs+RWCs) X 1,000,000 / MAN-HOURS
 RECORDABLE INCIDENCE RATE = RECORDABLES X 200,000 / MAN-HOURS
 RECORDABLE FREQUENCY RATE = RECORDABLES X 1,000,000 / MAN-HOURS

Companies Reporting: Land – 14 Water – 26

Africa Total LTI & Recordable Incidence Rates vs Man-hours (Figure 4)



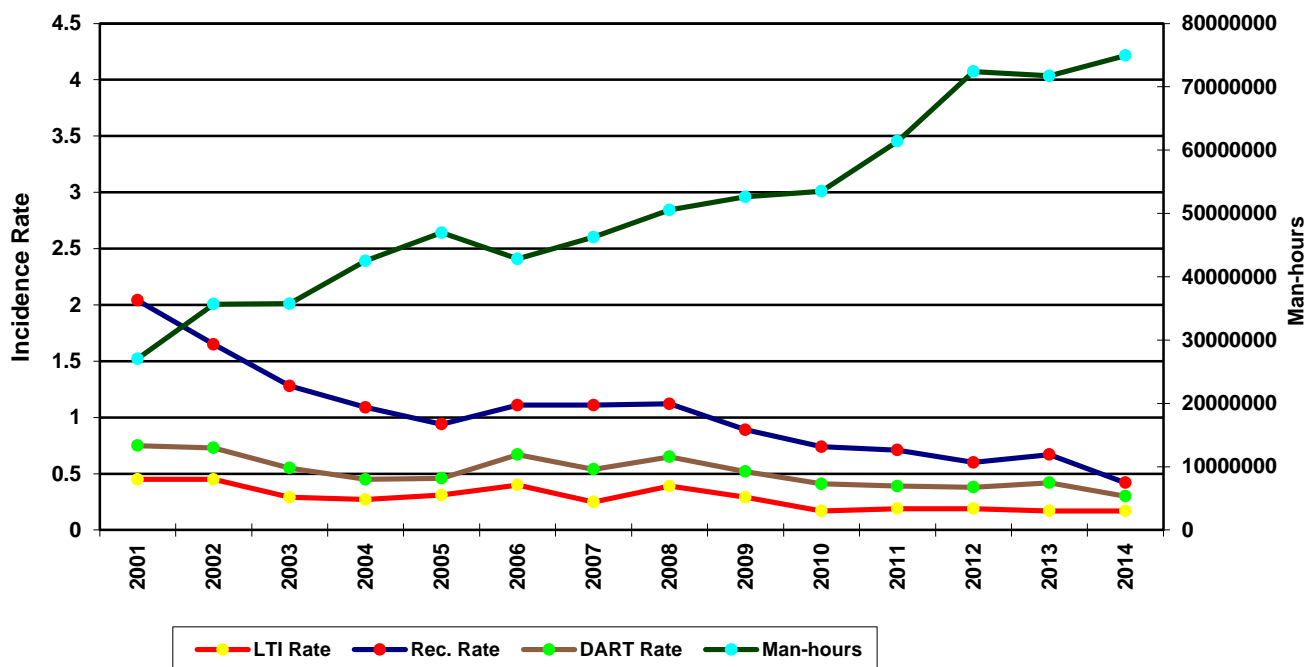
IADC 2014 Asia Pacific Totals (Table 5)

	LAND	WATER	COMBINED
TOTAL MANHOURS	22,946,866	51,996,092	74,942,958
TOTAL MEDICAL TREATMENT INCIDENTS	17	28	45
TOTAL RESTRICTED WORK INCIDENTS	8	39	47
TOTAL LOST TIME INCIDENTS	27	35	62
TOTAL FATALITIES	0	3	3
TOTAL RECORDABLES	52	105	157
MTO INCIDENCE RATE	0.15	0.11	0.12
RWC INCIDENCE RATE	0.07	0.15	0.13
LTI INCIDENCE RATE	0.24	0.15	0.17
LTI FREQUENCY RATE	1.18	0.73	0.87
DART INCIDENCE RATE	0.31	0.30	0.30
DART FREQUENCY RATE	1.53	1.48	1.49
RECORDABLE INCIDENCE RATE	0.45	0.40	0.42
RECORDABLE FREQUENCY RATE	2.27	2.02	2.09

MEDICAL TREATMENT INCIDENCE RATE = MTOs X 200,000 / MAN-HOURS (LTIs NOT INCLUDED)
 RESTRICTED WORK INCIDENCE RATE = RWCs X 200,000 / MAN-HOURS (LTIs NOT INCLUDED)
 LOST TIME INCIDENCE RATE = (LTIs+FTLs) X 200,000 / MAN-HOURS
 LOST TIME FREQUENCY RATE = (LTIs+FTLs) X 1,000,000 / MAN-HOURS
 DART INCIDENCE RATE = (LTIs+FTLs+RWCs) X 200,000 / MAN-HOURS
 DART INCIDENCE RATE = (LTIs+FTLs+RWCs) X 1,000,000 / MAN-HOURS
 RECORDABLE INCIDENCE RATE = RECORDABLES X 200,000 / MAN-HOURS
 RECORDABLE FREQUENCY RATE = RECORDABLES X 1,000,000 / MAN-HOURS

Companies Reporting: Land – 14 Water – 33

Asia Pacific Total LTI & Recordable Incidence Rates vs Man-hours (Figure 5)



IADC 2014 Australasia Totals (Table 6)

	LAND	WATER	COMBINED
TOTAL MANHOURS	6,001,767	3,280,928	9,282,695
TOTAL MEDICAL TREATMENT INCIDENTS	20	3	23
TOTAL RESTRICTED WORK INCIDENTS	14	6	20
TOTAL LOST TIME INCIDENTS	7	1	8
TOTAL FATALITIES	0	0	0
TOTAL RECORDABLES	41	10	51
MTO INCIDENCE RATE	0.67	0.18	0.49
RWC INCIDENCE RATE	0.47	0.37	0.43
LTI INCIDENCE RATE	0.23	0.06	0.17
LTI FREQUENCY RATE	1.17	0.30	0.86
DART INCIDENCE RATE	0.70	0.43	0.60
DART FREQUENCY RATE	3.50	2.13	3.02
RECORDABLE INCIDENCE RATE	1.37	0.61	1.10
RECORDABLE FREQUENCY RATE	6.83	3.05	5.49

MEDICAL TREATMENT INCIDENCE RATE = MTOs X 200,000 / MAN-HOURS (LTIs NOT INCLUDED)

RESTRICTED WORK INCIDENCE RATE = RWCs X 200,000 / MAN-HOURS (LTIs NOT INCLUDED)

LOST TIME INCIDENCE RATE = (LTIs+FTLs) X 200,000 / MAN-HOURS

LOST TIME FREQUENCY RATE = (LTIs+FTLs) X 1,000,000 / MAN-HOURS

DART INCIDENCE RATE = (LTIs+FTLs+RWCs) X 200,000 / MAN-HOURS

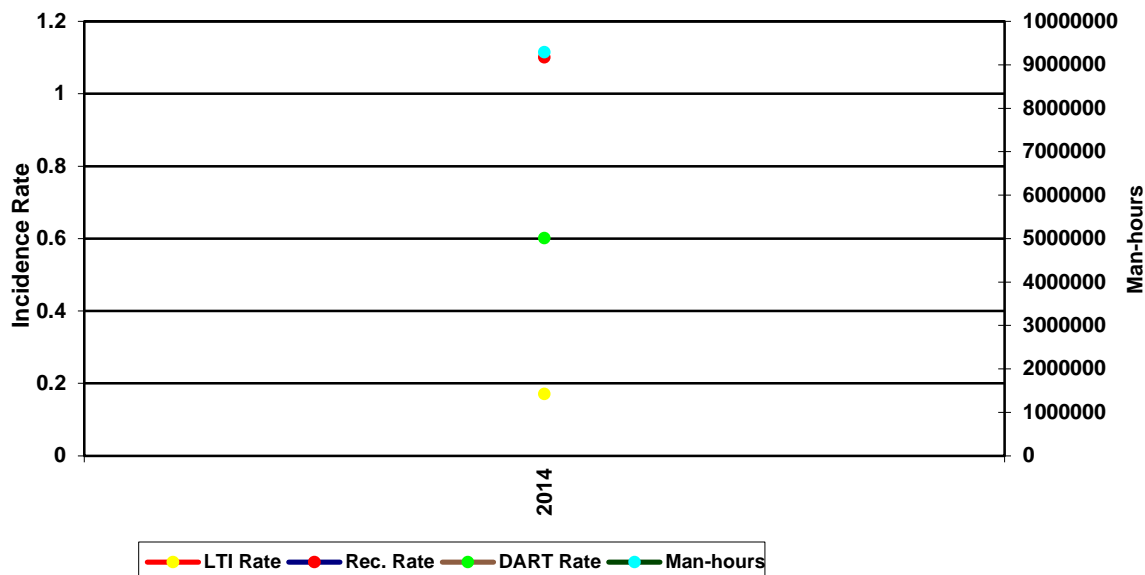
DART FREQUENCY RATE = (LTIs+FTLs+RWCs) X 1,000,000 / MAN-HOURS

RECORDABLE INCIDENCE RATE = RECORDABLES X 200,000 / MAN-HOURS

RECORDABLE FREQUENCY RATE = RECORDABLES X 1,000,000 / MAN-HOURS

Companies Reporting: Land – 7; Water – 7

Australasia Total LTI & Recordable Incidence Rates vs Man-hours (Figure 6)



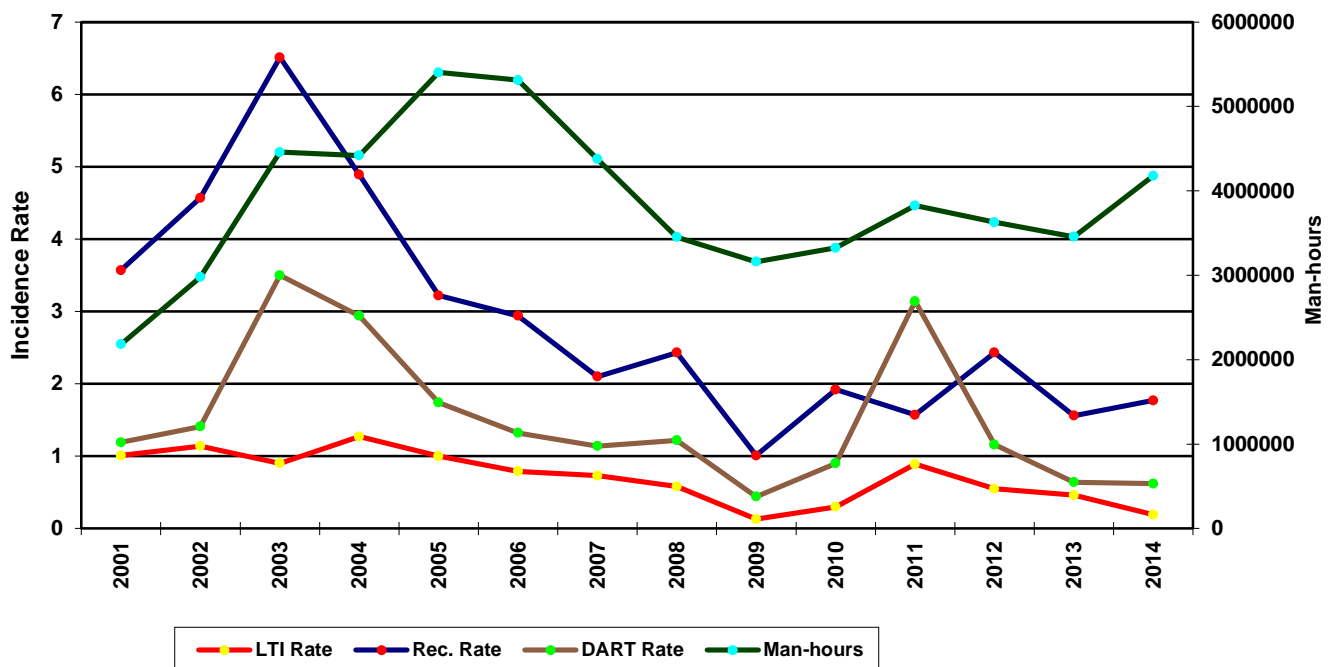
IADC 2014 Canada Totals (Table 7)

	LAND	WATER	COMBINED
TOTAL MANHOURS	2,745,151	1,433,556	4,178,707
TOTAL MEDICAL TREATMENT INCIDENTS	22	2	24
TOTAL RESTRICTED WORK INCIDENTS	6	3	9
TOTAL LOST TIME INCIDENTS	3	0	3
TOTAL FATALITIES	1	0	1
TOTAL RECORDABLES	32	5	37
MTO INCIDENCE RATE	1.60	0.28	1.15
RWC INCIDENCE RATE	0.44	0.42	0.43
LTI INCIDENCE RATE	0.29	0.00	0.19
LTI FREQUENCY RATE	1.46	0.00	0.96
DART INCIDENCE RATE	0.73	0.42	0.62
DART FREQUENCY RATE	3.64	2.09	3.11
RECORDABLE INCIDENCE RATE	2.33	0.70	1.77
RECORDABLE FREQUENCY RATE	11.66	3.49	8.85

MEDICAL TREATMENT INCIDENCE RATE = MTOs X 200,000 / MAN-HOURS (LTIs NOT INCLUDED)
 RESTRICTED WORK INCIDENCE RATE = RWCs X 200,000 / MAN-HOURS (LTIs NOT INCLUDED)
 LOST TIME INCIDENCE RATE = (LTIs+FTLs) X 200,000 / MAN-HOURS
 LOST TIME FREQUENCY RATE = (LTIs+FTLs) X 1,000,000 / MAN-HOURS
 DART INCIDENCE RATE = (LTIs+FTLs+RWCs) X 200,000 / MAN-HOURS
 DART INCIDENCE RATE = (LTIs+FTLs+RWCs) X 1,000,000 / MAN-HOURS
 RECORDABLE INCIDENCE RATE = RECORDABLES X 200,000 / MAN-HOURS
 RECORDABLE FREQUENCY RATE = RECORDABLES X 1,000,000 / MAN-HOURS

Companies Reporting: Land – 4 Water – 4

Canada Total LTI & Recordable Incidence Rates vs Man-hours (Figure 7)



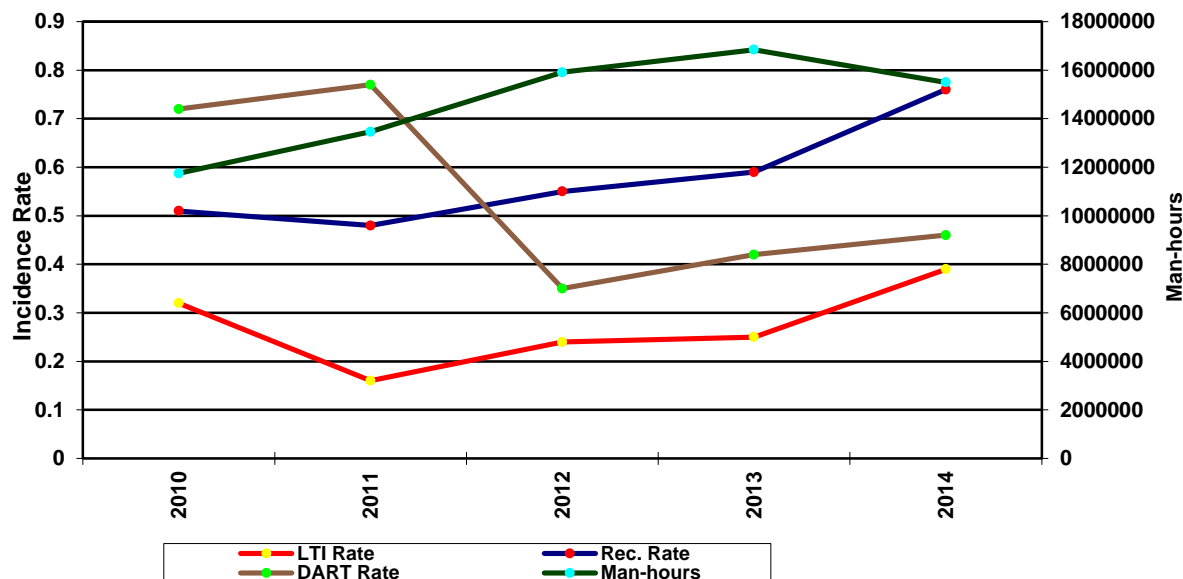
IADC 2014 Central America & Caribbean Totals (Table 8)

	LAND	WATER	COMBINED
TOTAL MANHOURS	8,351,724	7,148,806	15,500,530
TOTAL MEDICAL TREATMENT INCIDENTS	7	16	23
TOTAL RESTRICTED WORK INCIDENTS	2	4	6
TOTAL LOST TIME INCIDENTS	18	10	28
TOTAL FATALITIES	0	2	2
TOTAL RECORDABLES	27	32	59
MTO INCIDENCE RATE	0.17	0.45	0.30
RWC INCIDENCE RATE	0.05	0.11	0.08
LTI INCIDENCE RATE	0.43	0.34	0.39
LTI FREQUENCY RATE	2.16	1.68	1.94
DART INCIDENCE RATE	0.48	0.45	0.46
DART FREQUENCY RATE	2.39	2.24	2.32
RECORDABLE INCIDENCE RATE	0.65	0.90	0.76
RECORDABLE FREQUENCY RATE	3.23	4.48	3.81

MEDICAL TREATMENT INCIDENCE RATE = MTOs X 200,000 / MAN-HOURS (LTIs NOT INCLUDED)
 RESTRICTED WORK INCIDENCE RATE = RWCs X 200,000 / MAN-HOURS (LTIs NOT INCLUDED)
 LOST TIME INCIDENCE RATE = (LTIs+FTLs) X 200,000 / MAN-HOURS
 LOST TIME FREQUENCY RATE = (LTIs+FTLs) X 1,000,000 / MAN-HOURS
 DART INCIDENCE RATE = (LTIs+FTLs+RWCs) X 200,000 / MAN-HOURS
 DART FREQUENCY RATE = (LTIs+FTLs+RWCs) X 1,000,000 / MAN-HOURS
 RECORDABLE INCIDENCE RATE = RECORDABLES X 200,000 / MAN-HOURS
 RECORDABLE FREQUENCY RATE = RECORDABLES X 1,000,000 / MAN-HOURS

Companies Reporting: Land – 6 Water – 9

Central America & Caribbean Total LTI & Recordable Incidence Rates vs Man-hours
(Figure 8)



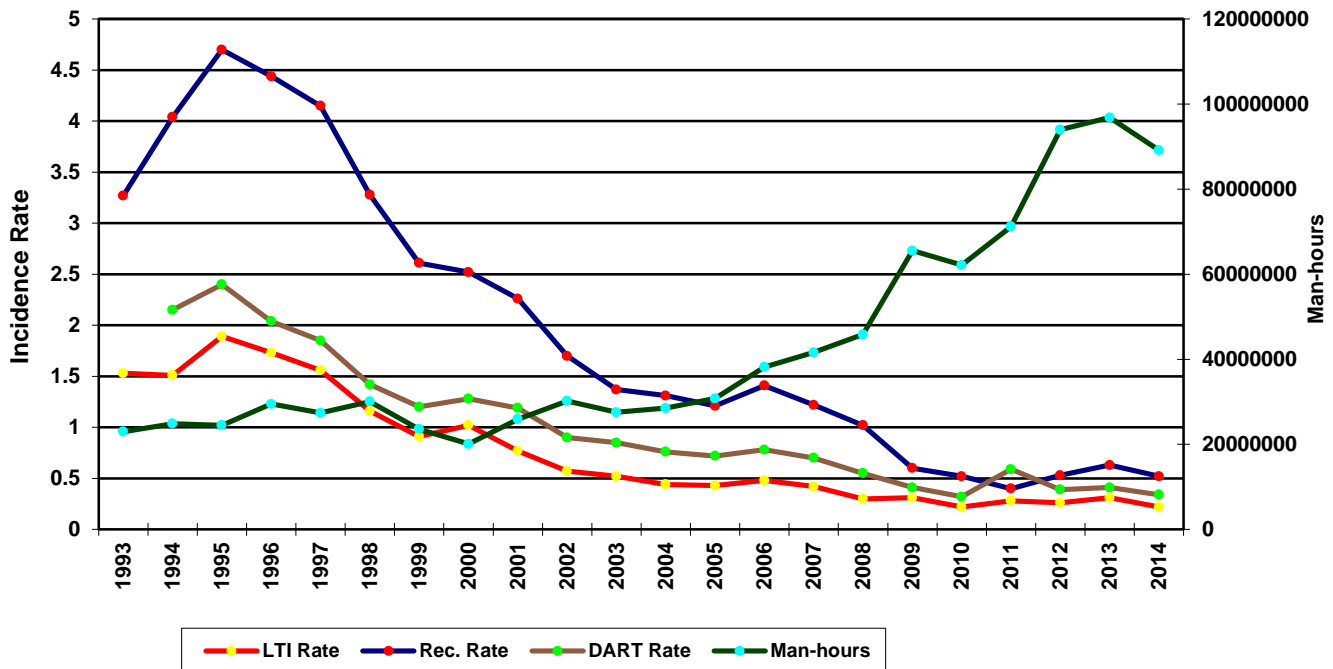
IADC 2014 European Totals (Table 9)

	LAND	WATER	COMBINED
TOTAL MANHOURS	49,839,013	39,307,901	89,146,914
TOTAL MEDICAL TREATMENT INCIDENTS	13	67	80
TOTAL RESTRICTED WORK INCIDENTS	16	38	54
TOTAL LOST TIME INCIDENTS	58	38	96
TOTAL FATALITIES	1	0	1
TOTAL RECORDABLES	88	143	231
MTO INCIDENCE RATE	0.05	0.34	0.18
RWC INCIDENCE RATE	0.06	0.19	0.12
LTI INCIDENCE RATE	0.24	0.19	0.22
LTI FREQUENCY RATE	1.18	0.97	1.09
DART INCIDENCE RATE	0.30	0.39	0.34
DART FREQUENCY RATE	1.50	1.93	1.69
RECORDABLE INCIDENCE RATE	0.35	0.73	0.52
RECORDABLE FREQUENCY RATE	1.77	3.64	2.59

MEDICAL TREATMENT INCIDENCE RATE = MTOs X 200,000 / MAN-HOURS (LTIs NOT INCLUDED)
 RESTRICTED WORK INCIDENCE RATE = RWCs X 200,000 / MAN-HOURS (LTIs NOT INCLUDED)
 LOST TIME INCIDENCE RATE = (LTIs+FTLs) X 200,000 / MAN-HOURS
 LOST TIME FREQUENCY RATE = (LTIs+FTLs) X 1,000,000 / MAN-HOURS
 DART INCIDENCE RATE = (LTIs+FTLs+RWCs) X 200,000 / MAN-HOURS
 DART FREQUENCY RATE = (LTIs+FTLs+RWCs) X 1,000,000 / MAN-HOURS
 RECORDABLE INCIDENCE RATE = RECORDABLES X 200,000 / MAN-HOURS
 RECORDABLE FREQUENCY RATE = RECORDABLES X 1,000,000 / MAN-HOURS

Companies Reporting: Land – 14 Water – 22

European Total LTI & Recordable Incidence Rates vs Man-hours (Figure 9)



IADC 2014 Middle East Totals (Table 10)

	LAND	WATER	COMBINED
TOTAL MANHOURS	98,533,479	38,015,673	136,549,152
TOTAL MEDICAL TREATMENT INCIDENTS	109	17	126
TOTAL RESTRICTED WORK INCIDENTS	90	33	123
TOTAL LOST TIME INCIDENTS	67	16	83
TOTAL FATALITIES	0	0	0
TOTAL RECORDABLES	266	66	332
MTO INCIDENCE RATE	0.22	0.09	0.18
RWC INCIDENCE RATE	0.18	0.17	0.18
LTI INCIDENCE RATE	0.14	0.08	0.12
LTI FREQUENCY RATE	0.68	0.42	0.61
DART INCIDENCE RATE	0.32	0.26	0.30
DART FREQUENCY RATE	1.59	1.29	1.51
RECORDABLE INCIDENCE RATE	0.54	0.35	0.49
RECORDABLE FREQUENCY RATE	2.70	1.74	2.43

MEDICAL TREATMENT INCIDENCE RATE = MTOs X 200,000 / MAN-HOURS (LTIs NOT INCLUDED)

RESTRICTED WORK INCIDENCE RATE = RWCs X 200,000 / MAN-HOURS (LTIs NOT INCLUDED)

LOST TIME INCIDENCE RATE = (LTIs+FTLs) X 200,000 / MAN-HOURS

LOST TIME FREQUENCY RATE = (LTIs+FTLs) X 1,000,000 / MAN-HOURS

DART INCIDENCE RATE - (LTIs+FTLs+RWCs) X 200,000 / MAN-HOURS

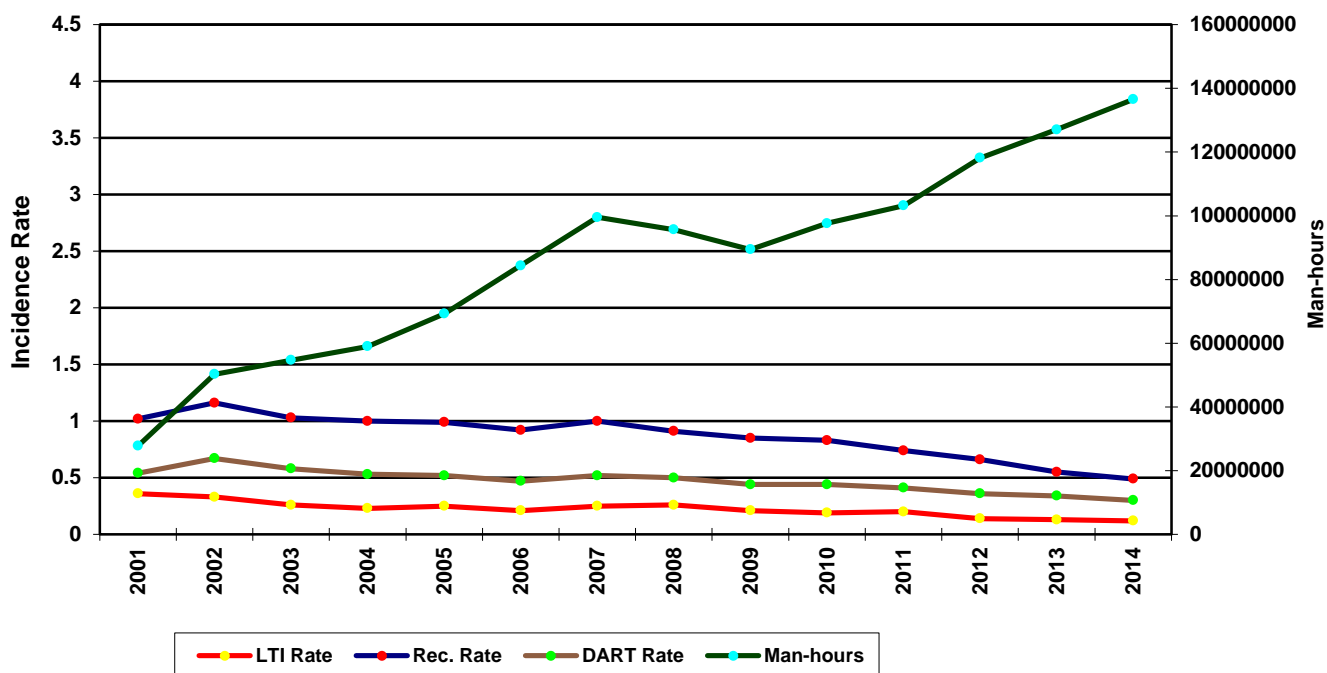
DART INCIDENCE RATE - (LTIs+FTLs+RWCs) X 1,000,000 / MAN-HOURS

RECORDABLE INCIDENCE RATE = RECORDABLES X 200,000 / MAN-HOURS

RECORDABLE FREQUENCY RATE = RECORDABLES X 1,000,000 / MAN-HOURS

Companies Reporting: Land – 25 Water – 20

Middle East Total LTI & Recordable Incidence Rates vs Man-hours (Figure 10)



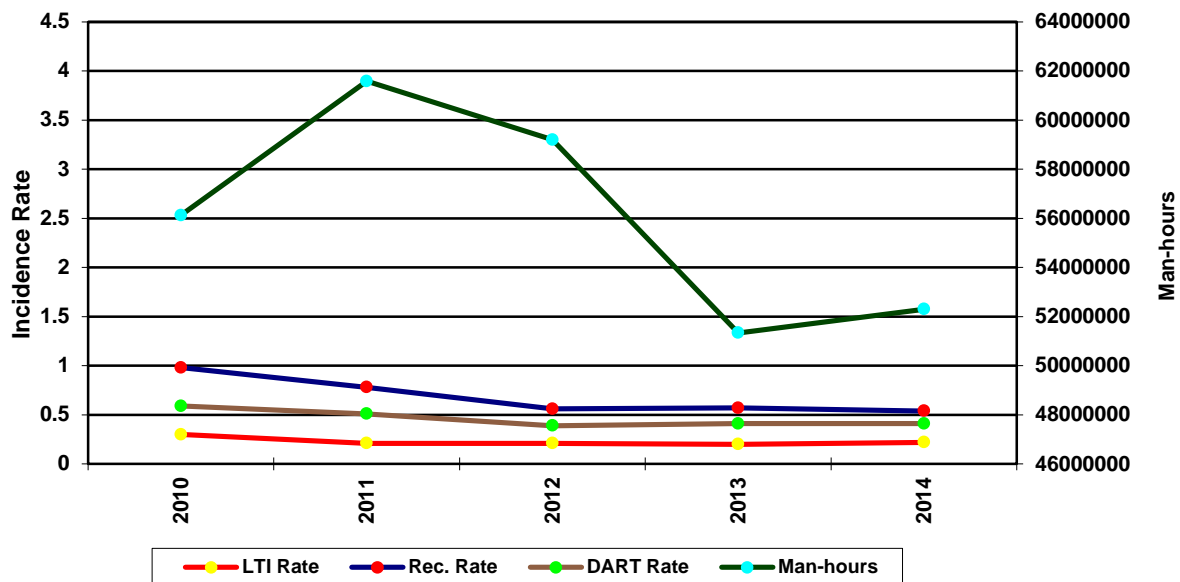
IADC 2014 South American Totals (Table 11)

	LAND	WATER	COMBINED
TOTAL MANHOURS	31,975,404	20,327,008	52,302,412
TOTAL MEDICAL TREATMENT INCIDENTS	19	16	35
TOTAL RESTRICTED WORK INCIDENTS	36	13	49
TOTAL LOST TIME INCIDENTS	31	24	55
TOTAL FATALITIES	0	2	2
TOTAL RECORDABLES	86	55	141
MTO INCIDENCE RATE	0.12	0.16	0.13
RWC INCIDENCE RATE	0.23	0.13	0.19
LTI INCIDENCE RATE	0.19	0.26	0.22
LTI FREQUENCY RATE	0.97	1.28	1.09
DART INCIDENCE RATE	0.42	0.38	0.41
DART FREQUENCY RATE	2.10	1.92	2.03
RECORDABLE INCIDENCE RATE	0.54	0.54	0.54
RECORDABLE FREQUENCY RATE	2.69	2.71	2.70

MEDICAL TREATMENT INCIDENCE RATE = MTOs X 200,000 / MAN-HOURS (LTIs NOT INCLUDED)
 RESTRICTED WORK INCIDENCE RATE = RWCs X 200,000 / MAN-HOURS (LTIs NOT INCLUDED)
 LOST TIME INCIDENCE RATE = (LTIs+FTLs) X 200,000 / MAN-HOURS
 LOST TIME FREQUENCY RATE = (LTIs+FTLs) X 1,000,000 / MAN-HOURS
 DART INCIDENCE RATE = (LTIs+FTLs+RWCs) X 200,000 / MAN-HOURS
 DART INCIDENCE RATE = (LTIs+FTLs+RWCs) X 1,000,000 / MAN-HOURS
 RECORDABLE INCIDENCE RATE = RECORDABLES X 200,000 / MAN-HOURS
 RECORDABLE FREQUENCY RATE = RECORDABLES X 1,000,000 / MAN-HOURS

Companies Reporting: Land – 8 Water – 14

South America Total LTI & Recordable Incidence Rates vs Man-hours (Figure 11)



IADC 2014 US Totals (Table 12)

	LAND	WATER	COMBINED
TOTAL MANHOURS	103,733,079	41,122,966	144,856,045
TOTAL MEDICAL TREATMENT INCIDENTS	317	65	382
TOTAL RESTRICTED WORK INCIDENTS	269	37	306
TOTAL LOST TIME INCIDENTS	205	29	234
TOTAL FATALITIES	10	0	10
TOTAL RECORDABLES	801	131	932
MTO INCIDENCE RATE	0.61	0.32	0.53
RWC INCIDENCE RATE	0.52	0.18	0.42
LTI INCIDENCE RATE	0.41	0.14	0.34
LTI FREQUENCY RATE	2.07	0.71	1.68
DART INCIDENCE RATE	0.93	0.32	0.76
DART FREQUENCY RATE	4.67	1.60	3.80
RECORDABLE INCIDENCE RATE	1.54	0.64	1.29
RECORDABLE FREQUENCY RATE	7.72	3.19	6.43

MEDICAL TREATMENT INCIDENCE RATE = MTOs X 200,000 / MAN-HOURS (LTIs NOT INCLUDED)
 RESTRICTED WORK INCIDENCE RATE = RWCs X 200,000 / MAN-HOURS (LTIs NOT INCLUDED)
 LOST TIME INCIDENCE RATE = (LTIs+FTLs) X 200,000 / MAN-HOURS
 LOST TIME FREQUENCY RATE = (LTIs+FTLs) X 1,000,000 / MAN-HOURS
 DART INCIDENCE RATE = (LTIs+FTLs+RWCs) X 200,000 / MAN-HOURS
 DART FREQUENCY RATE = (LTIs+FTLs+RWCs) X 1,000,000 / MAN-HOURS
 RECORDABLE INCIDENCE RATE = RECORDABLES X 200,000 / MAN-HOURS
 RECORDABLE FREQUENCY RATE = RECORDABLES X 1,000,000 / MAN-HOURS

Companies Reporting: Land – 34; Water – 15

US Total LTI & Recordable Incidence Rates vs Man-hours (Figure 12)

