



**IADC**

**IADC  
ISP PROGRAM**

**2013**



**Summary of Occupational  
Incidents  
(US Land Totals)**

*Issued 20 May 2014*

# Table of Contents

(Table of Contents is Hyperlinked, Just click on Topic & go)

IADC 2013 US LAND TOTALS (TABLE 1).....	1
<i>US Land Total Incidence Rates vs Man-hours (Figure 1)</i> .....	1
IADC 2013 US LAND CHARTS .....	2
<i>US Land Total Lost Time Incidents by Month (Chart 1)</i> .....	2
<i>US Land Total Recordable Incidents by Month (Chart 2)</i> .....	3
<i>US Land Total Lost Time Incidents by Occupation (Chart 3)</i> .....	4
<i>US Land Total Recordable Incidents by Occupation (Chart 4)</i> .....	5
<i>US Land Total Lost Time Incidents by Body Part (Chart 5)</i> .....	6
<i>US Land Total Recordable Incidents by Body Part (Chart 6)</i> .....	7
<i>US Land Total Lost Time Incidents by Incident Type (Chart 7)</i> .....	8
<i>US Land Total Recordable Incidents by Incident Type (Chart 8)</i> .....	9
<i>US Land Total Lost Time Incidents by Equipment (Chart 9)</i> .....	10
<i>US Land Total Recordable Incidents by Equipment (Chart 10)</i> .....	11
<i>US Land Total Lost Time Incidents by Operation (Chart 11)</i> .....	12
<i>US Land Total Recordable Incidents by Operation (Chart 12)</i> .....	13
<i>US Land Total Lost Time Incidents by Location (Chart 13)</i> .....	14
<i>US Land Total Recordable Incidents by Location (Chart 14)</i> .....	15
<i>US Land Total Lost Time Incidents by Time in Service (Chart 15)</i> .....	16
<i>US Land Total Recordable Incidents by Time in Service (Chart 16)</i> .....	17
<i>US Land Total Lost Time Incidents by Time of Day (Chart 17)</i> .....	18
<i>US Land Total Recordable Incidents by Time of Day (Chart 18)</i> .....	19

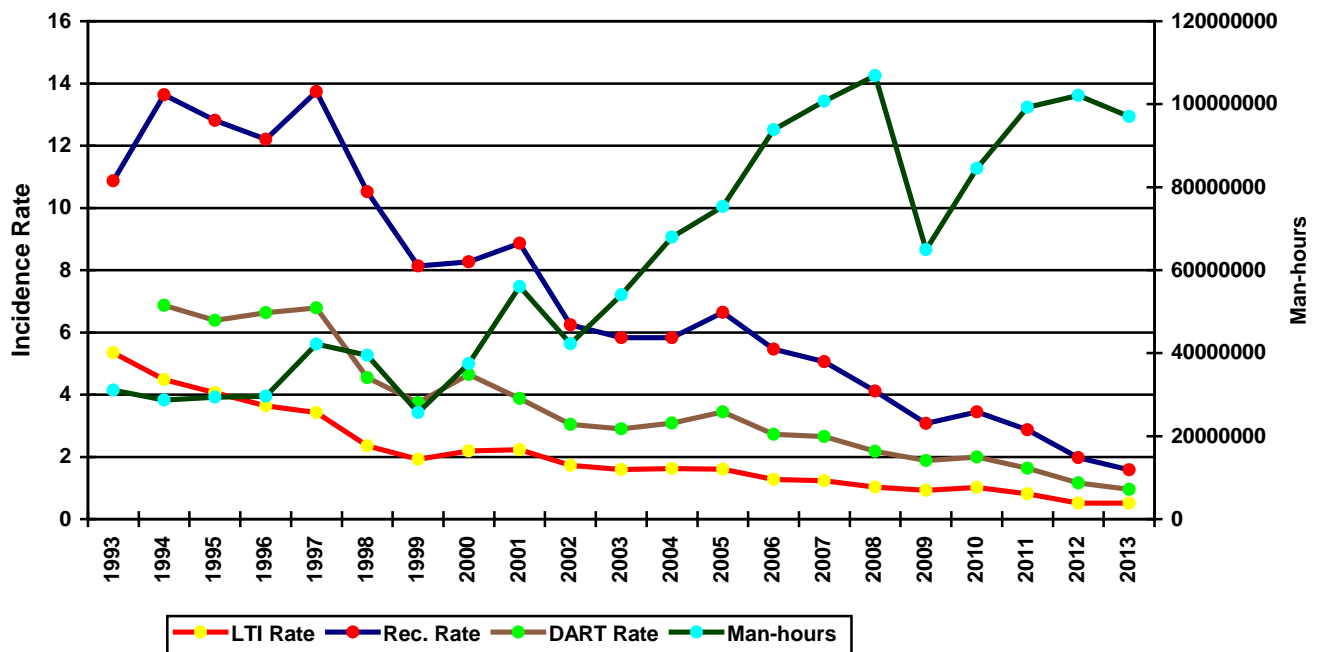
# IADC 2013 US Land Totals (Table 1)

	<u>Total</u>
Total Man-hours	97,013,290
Total Medical Treatment Incidents	301
Total Restricted Work Incidents	221
Total Lost Time Incidents	238
Total Fatalities	8
Total Recordables	768
MTO Incidence Rate	0.62
RWC Incidence Rate	0.46
LTI Incidence Rate	0.51
LTI Frequency Rate	2.54
DART Incidence Rate	0.96
DART Frequency Rate	4.81
Recordable Incidence Rate	1.58
Recordable Frequency Rate	7.92

Companies Reporting: Land – 37

Medical Treatment Incidence Rate = MTOs X 200,000  
 Restricted Work Incidence Rate = RWCs X 200,000  
 Lost Time Incidence Rate = LTIs + FTLs X 200,000  
 DART Incidence Rate = LTIs + RWC X 200,000  
 Recordable Incidence Rate = RCRD X 200,000  
 Lost Time Frequency Rate = LTIs +FTLs X 1,000,000  
 DART Frequency Rate = LTIs + RWC X 1,000,000  
 Recordable Frequency Rate = RCRD X 1,000,000

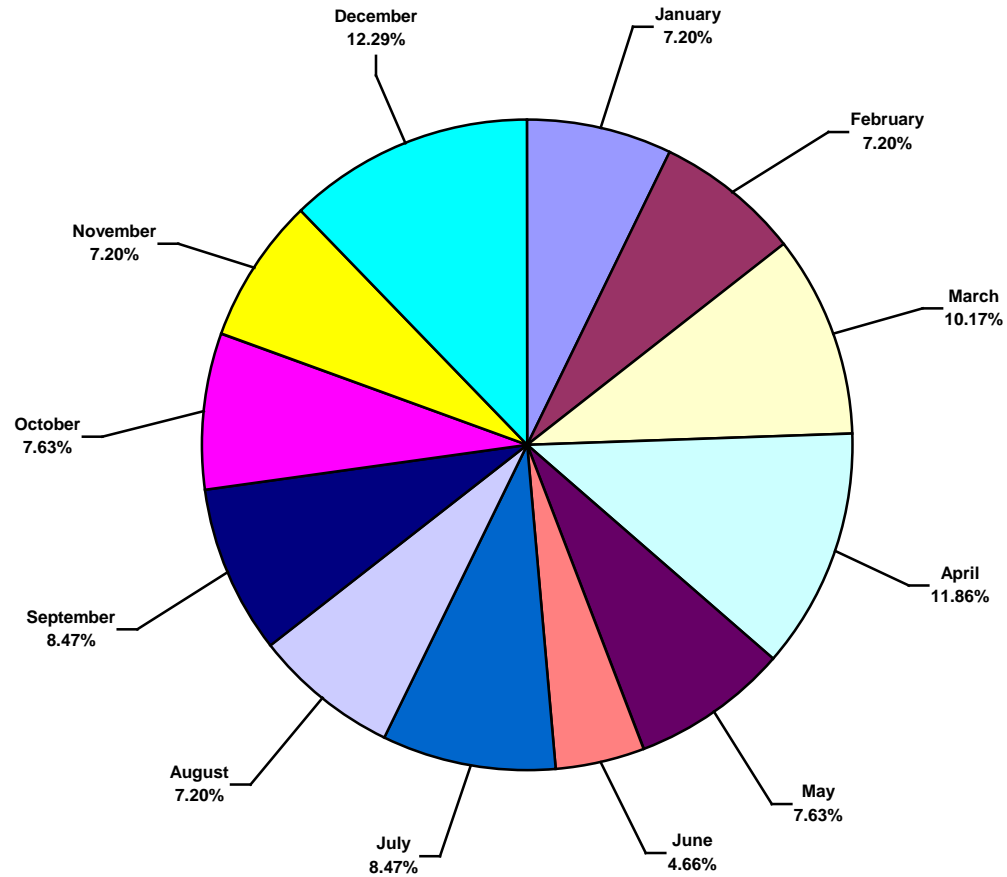
US Land Total Incidence Rates vs Man-hours (Figure 1)



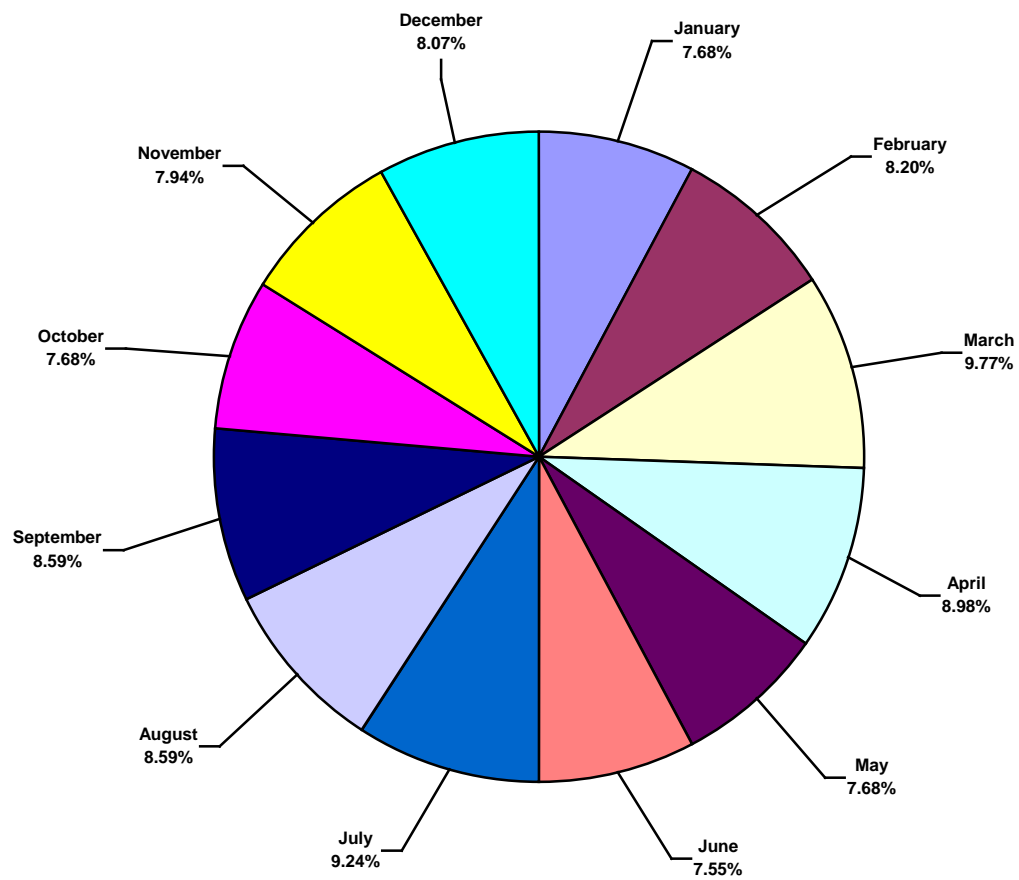
# IADC 2013 US Land Charts

## US Land Total Lost Time Incidents by Month (Chart 1)

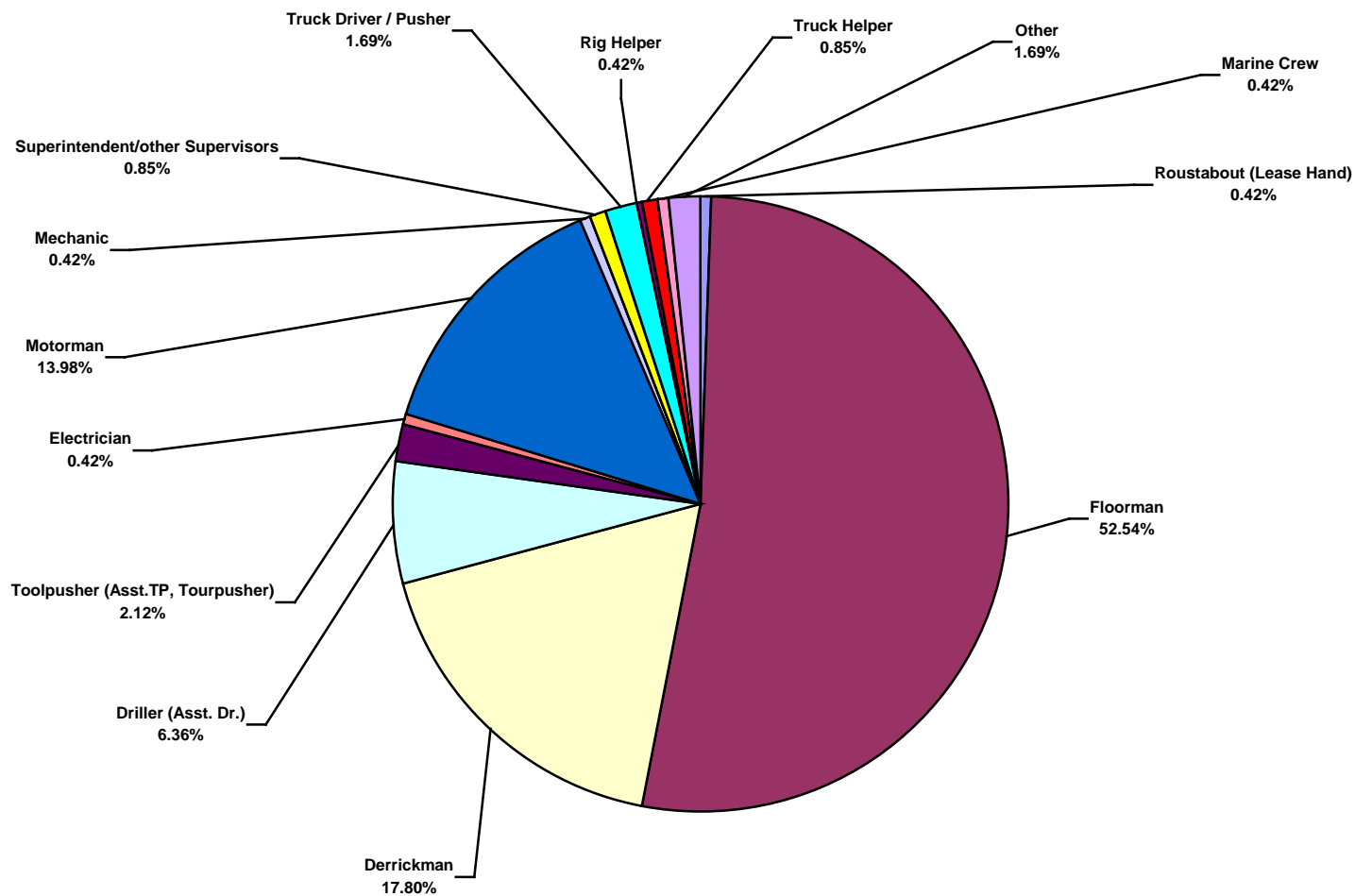
Based on 236 Incidents



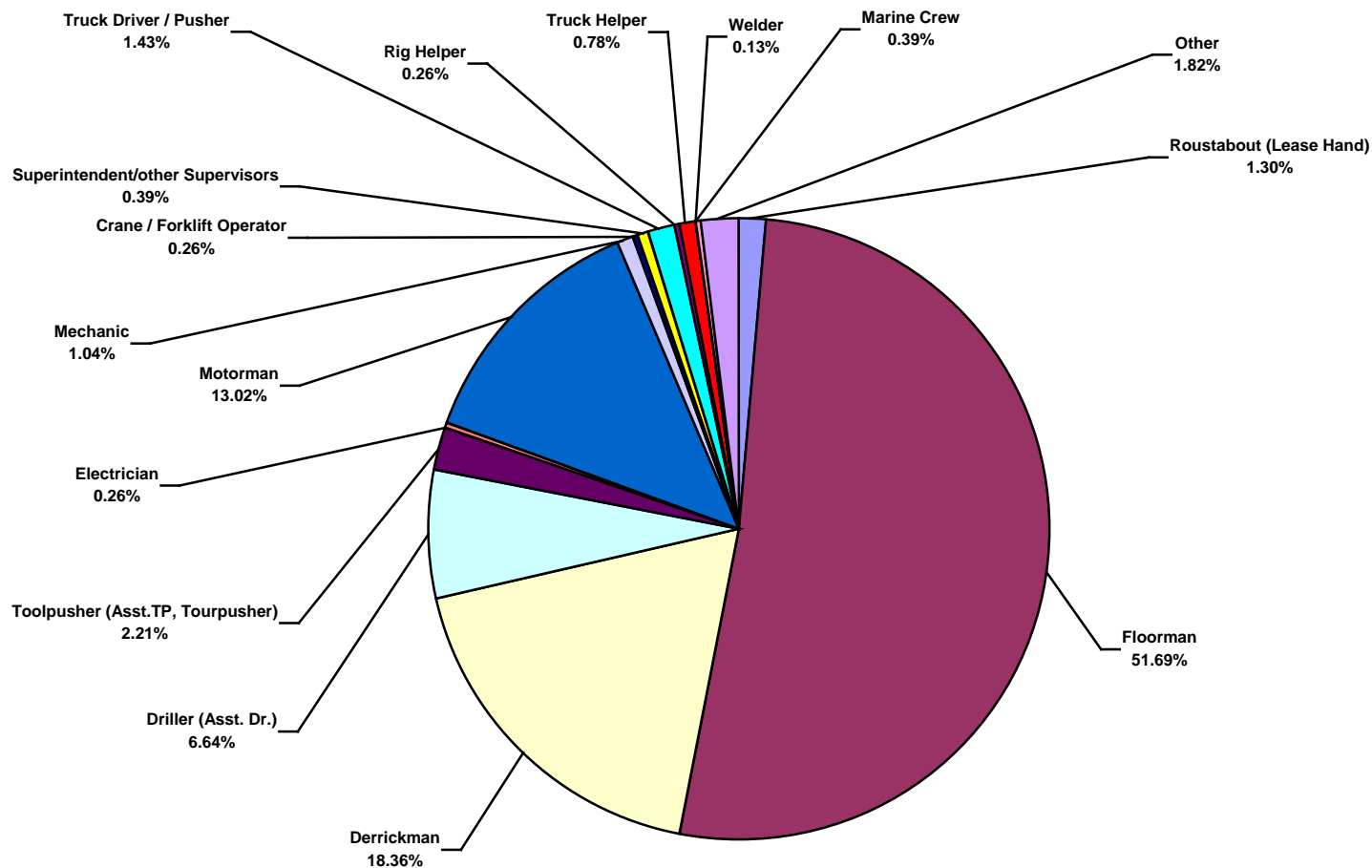
**US Land Total Recordable Incidents by Month (Chart 2)**  
Based on 768 Incidents



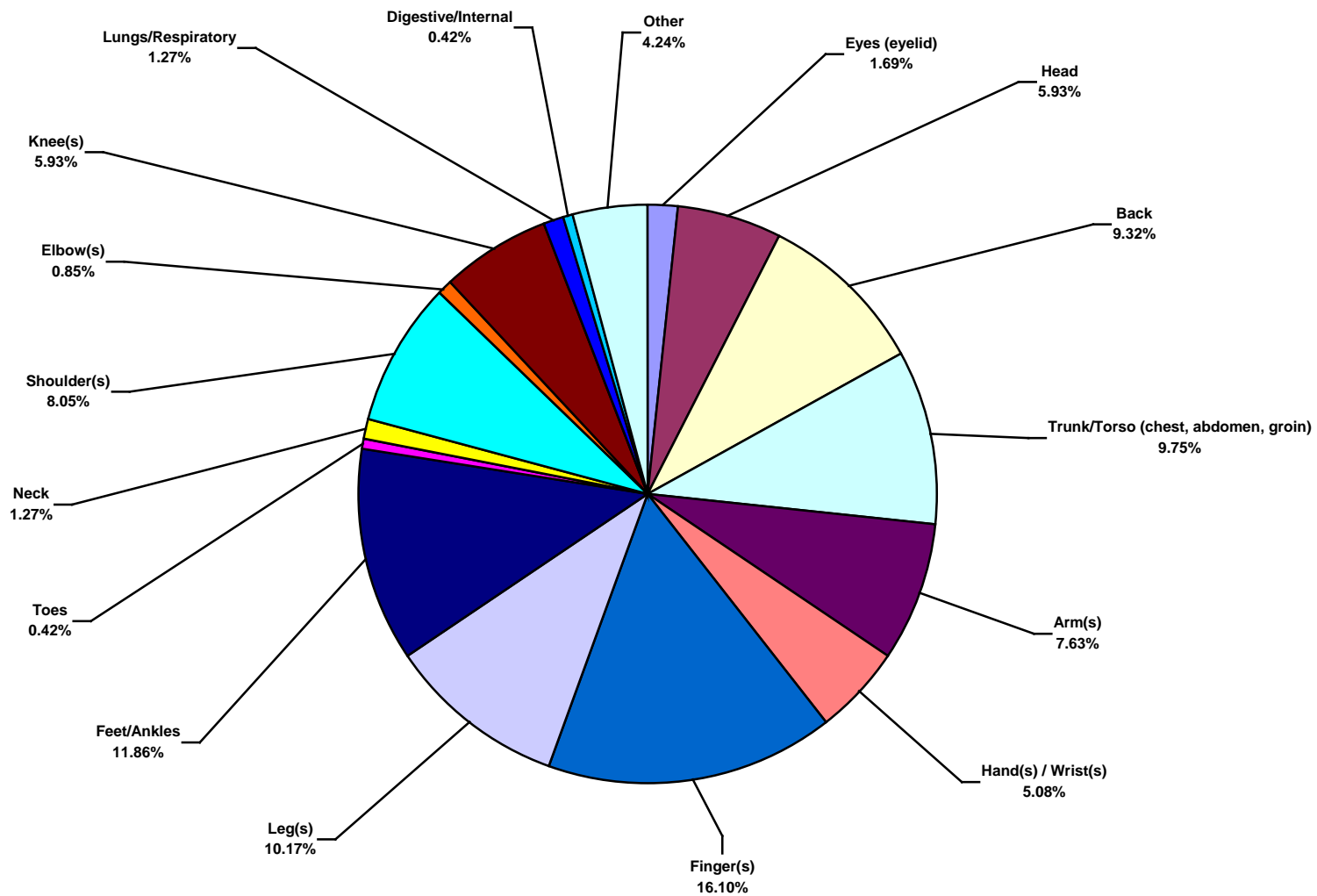
**US Land Total Lost Time Incidents by Occupation (Chart 3)**  
Based on 236 Incidents



**US Land Total Recordable Incidents by Occupation (Chart 4)**  
Based on 768 Incidents

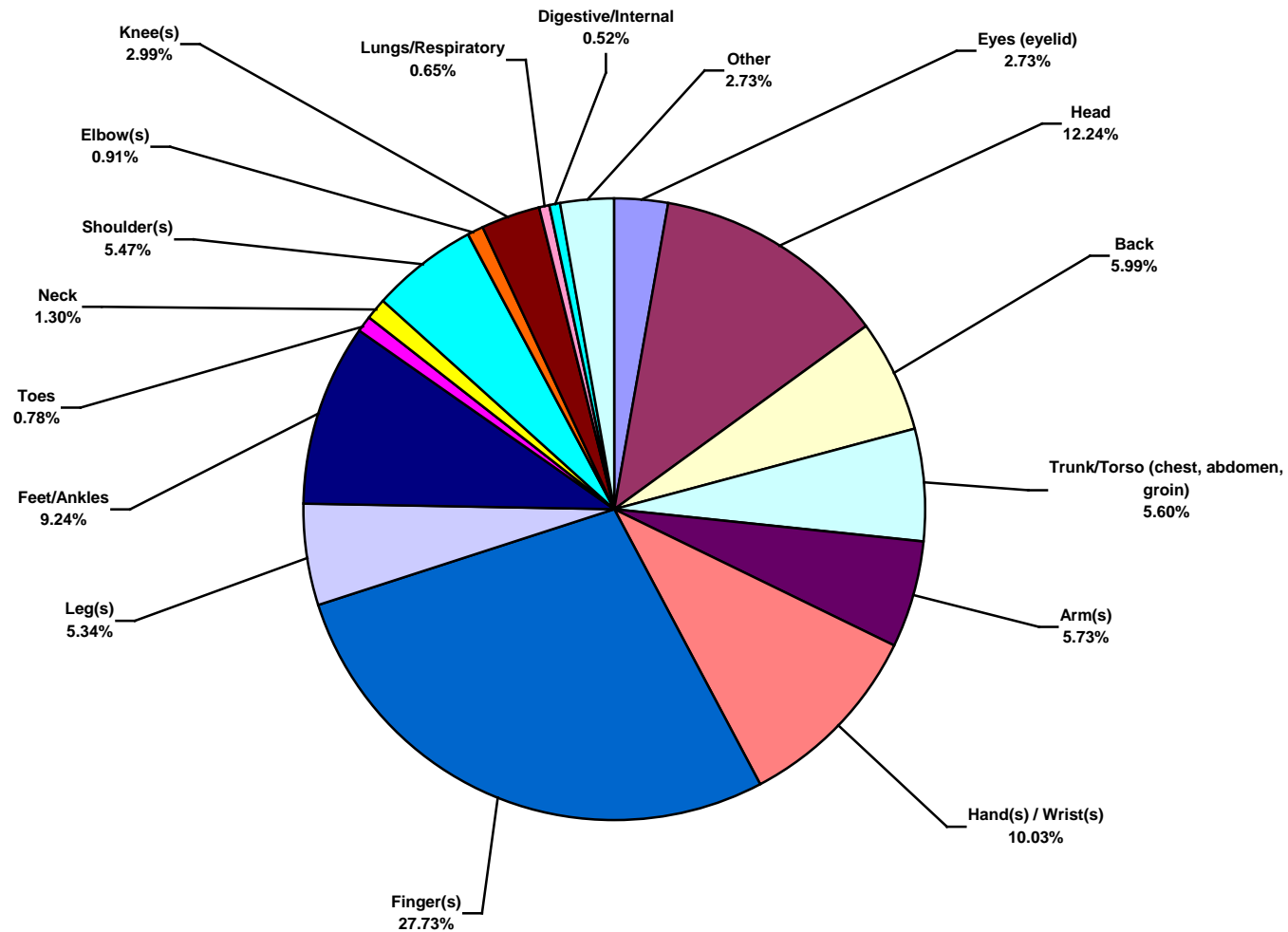


**US Land Total Lost Time Incidents by Body Part (Chart 5)**  
Based on 236 Incidents

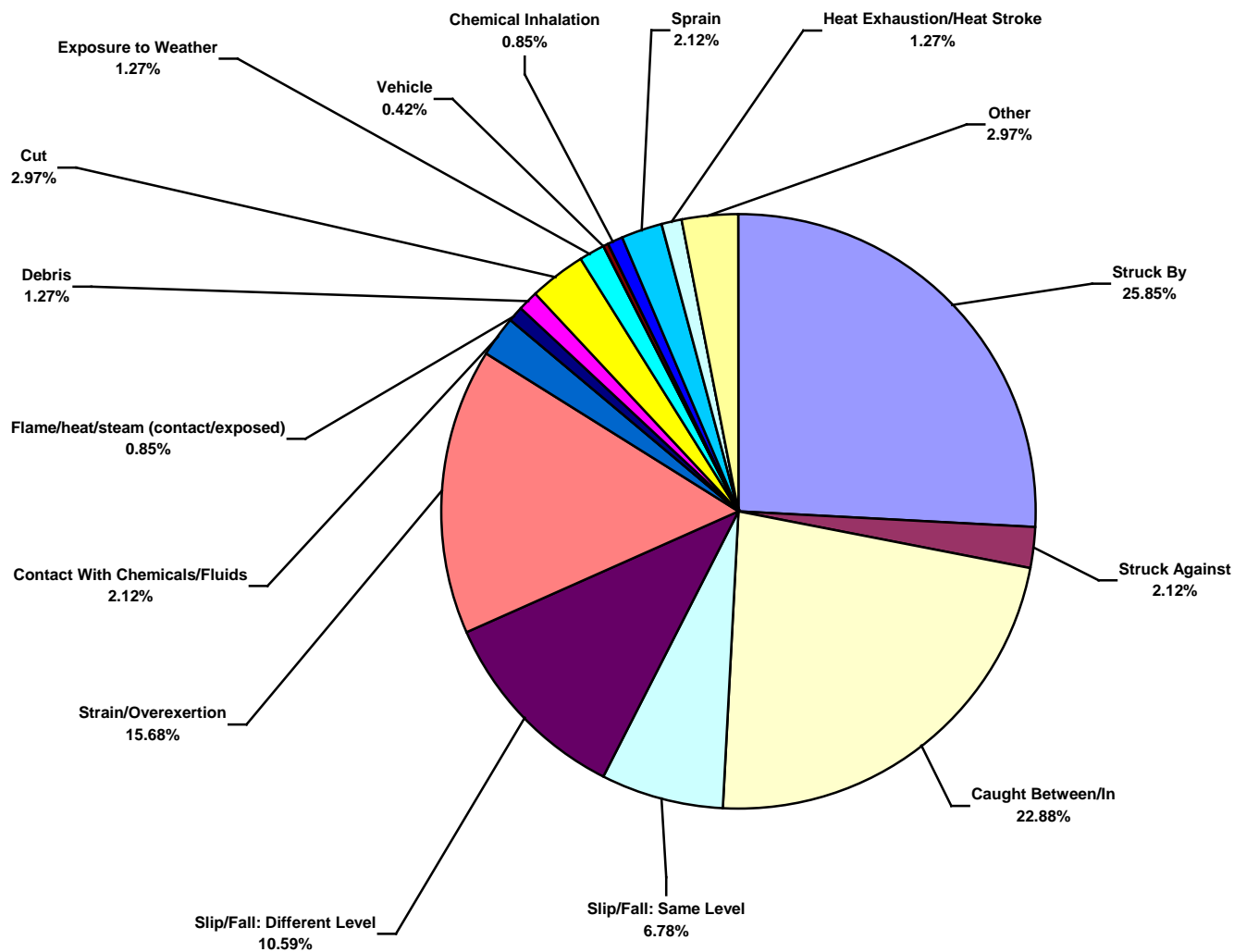




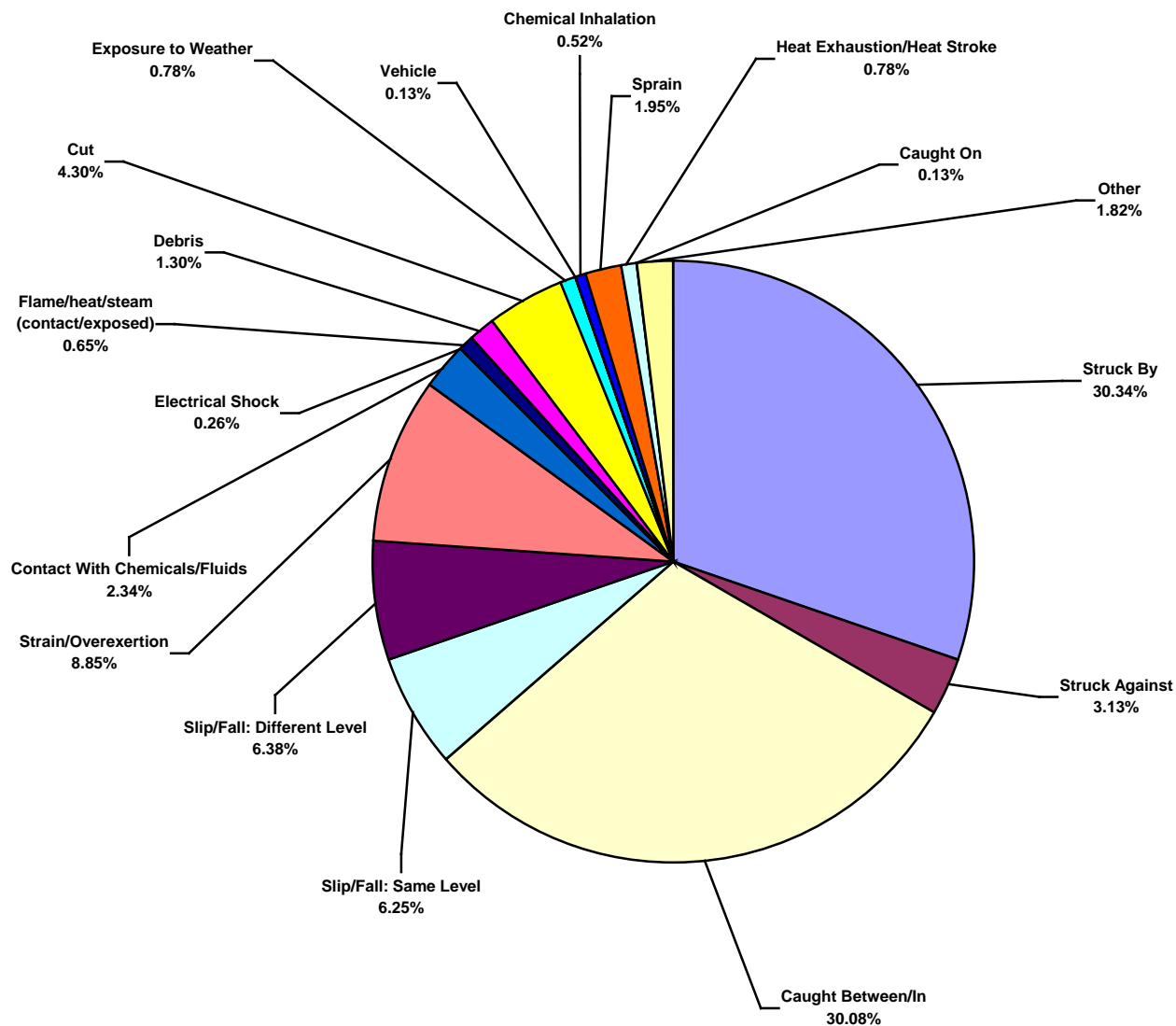
**US Land Total Recordable Incidents by Body Part (Chart 6)**  
Based on 768 Incidents



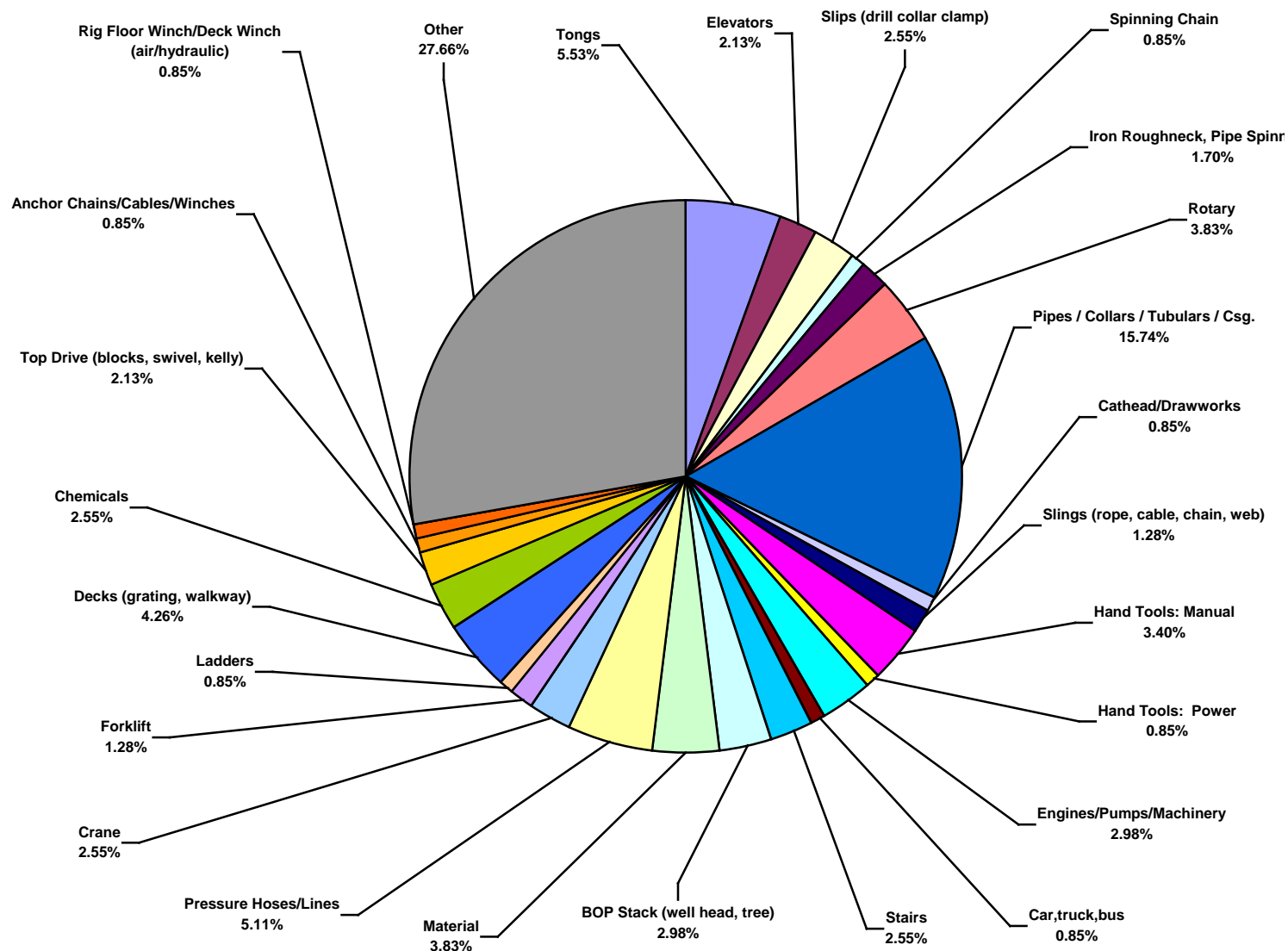
**US Land Total Lost Time Incidents by Incident Type (Chart 7)**  
Based on 236 Incidents



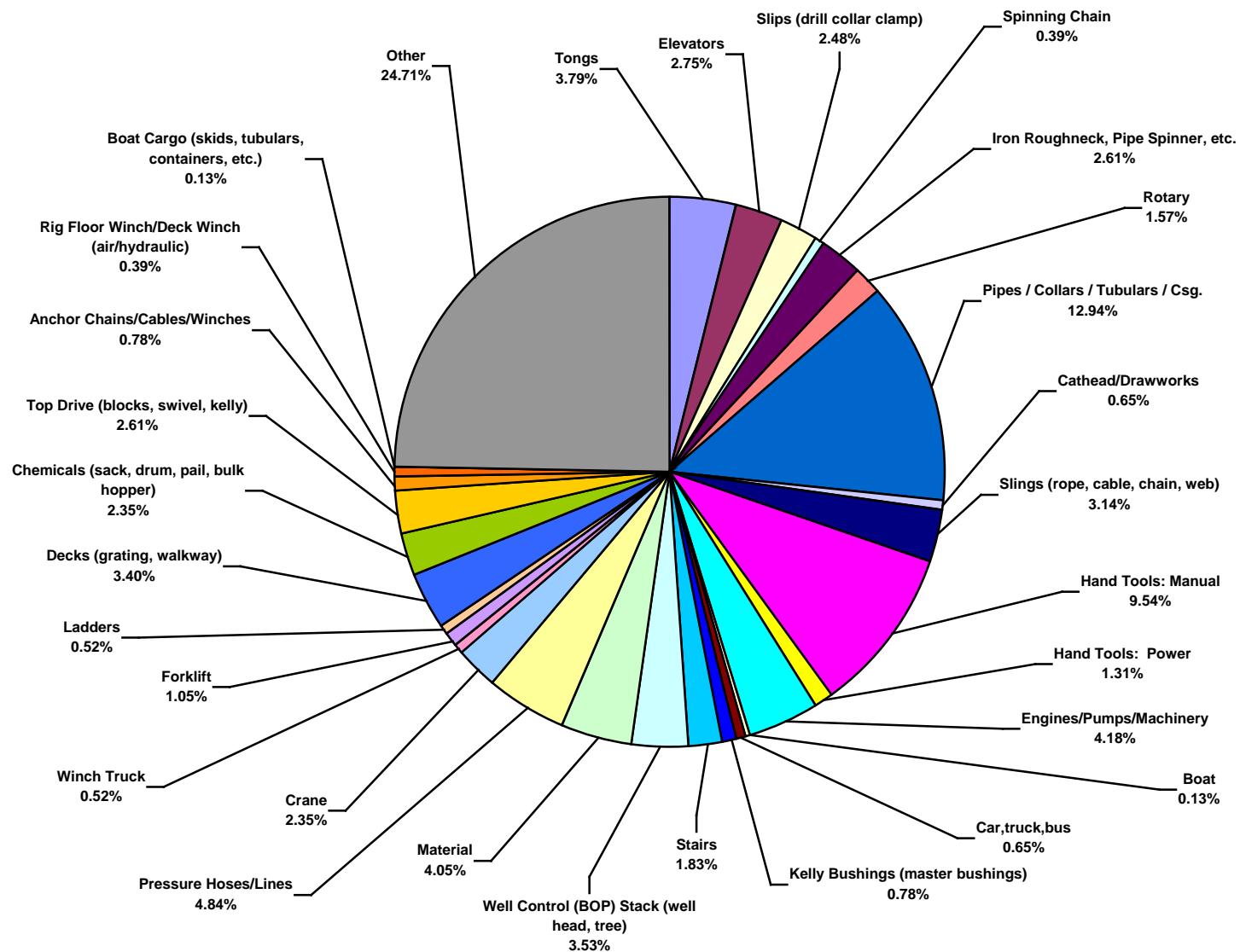
**US Land Total Recordable Incidents by Incident Type (Chart 8)**  
Based on 768 Incidents



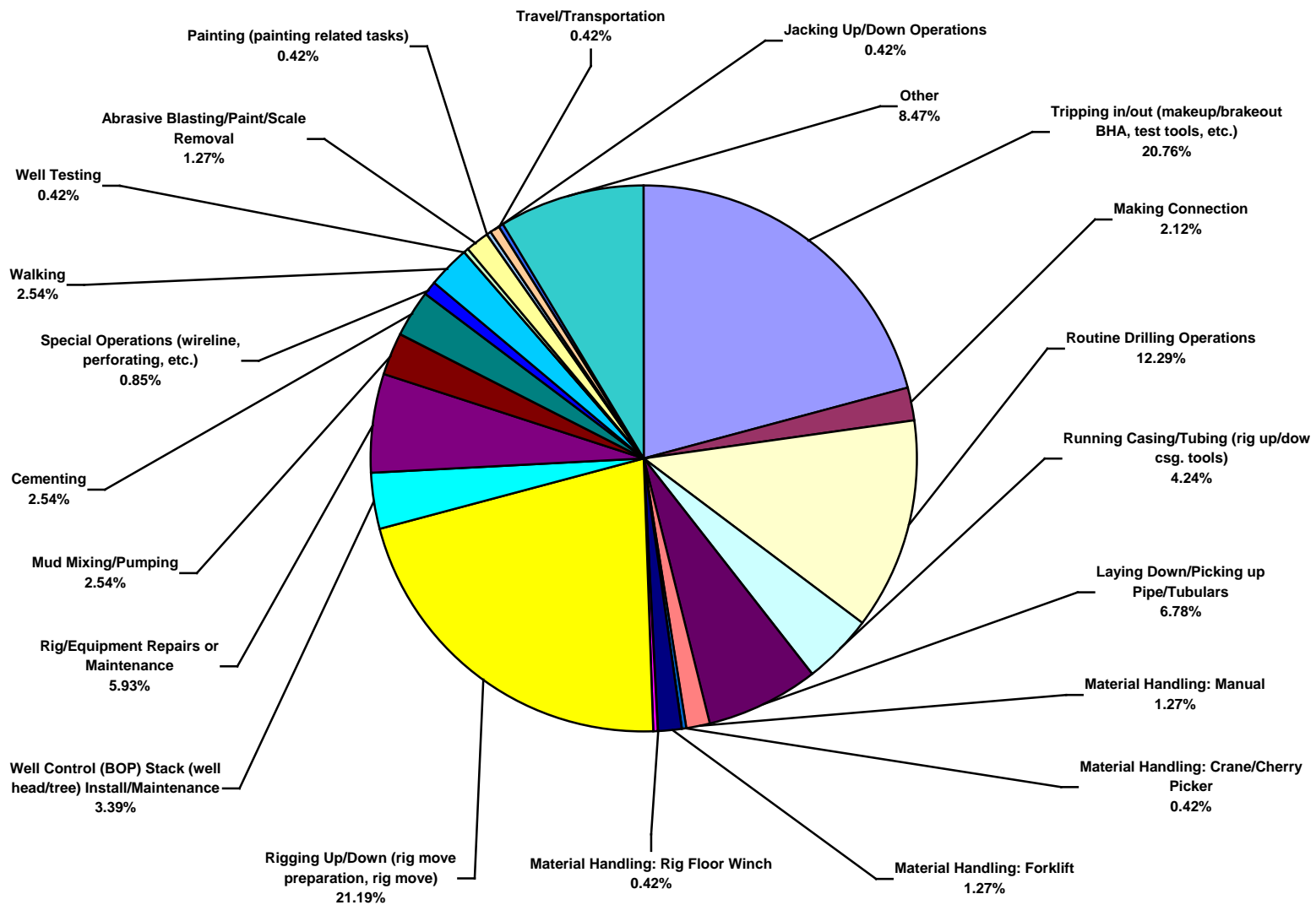
**US Land Total Lost Time Incidents by Equipment (Chart 9)**  
Based on 235 Incidents



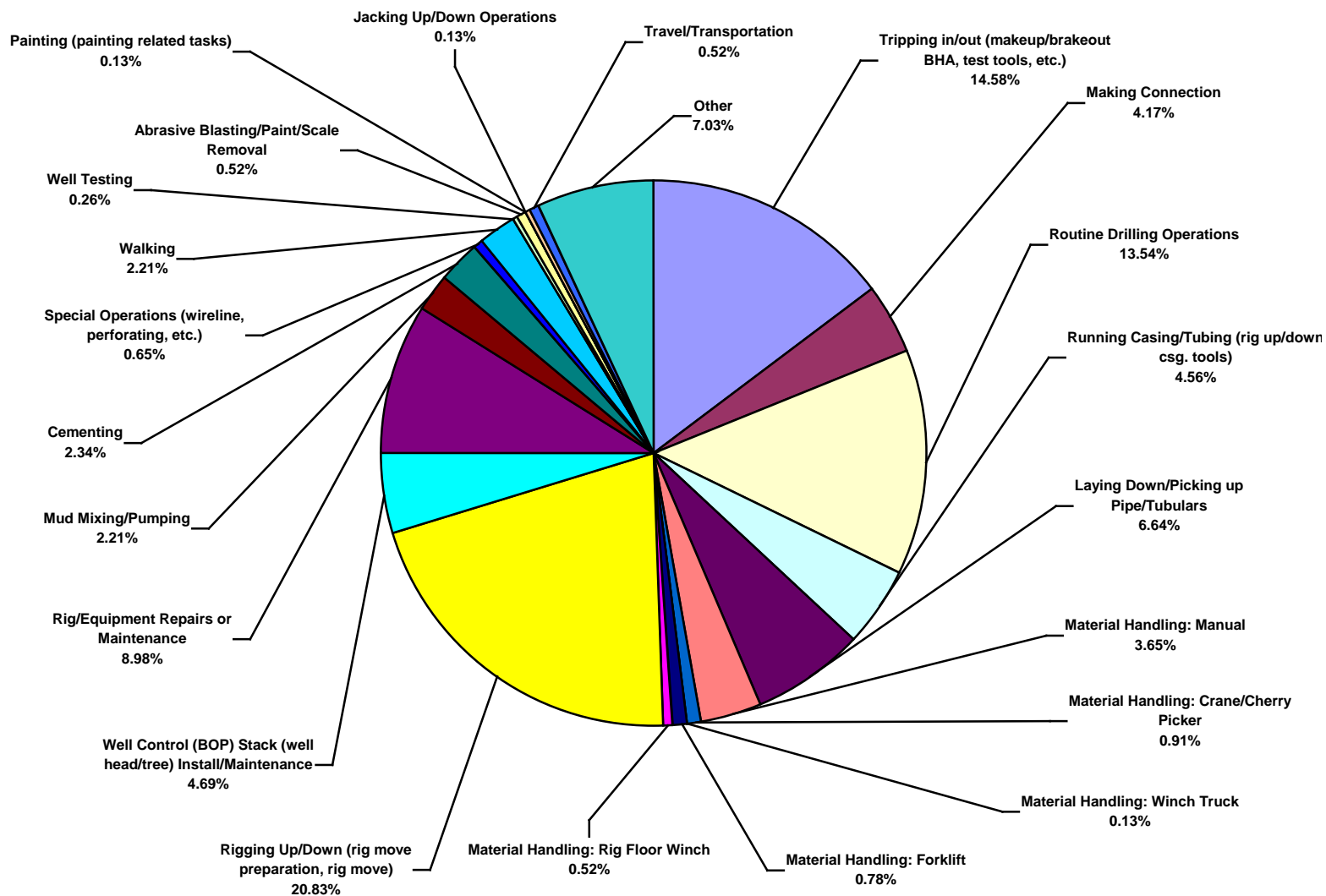
**US Land Total Recordable Incidents by Equipment (Chart 10)**  
Based on 765 Incidents



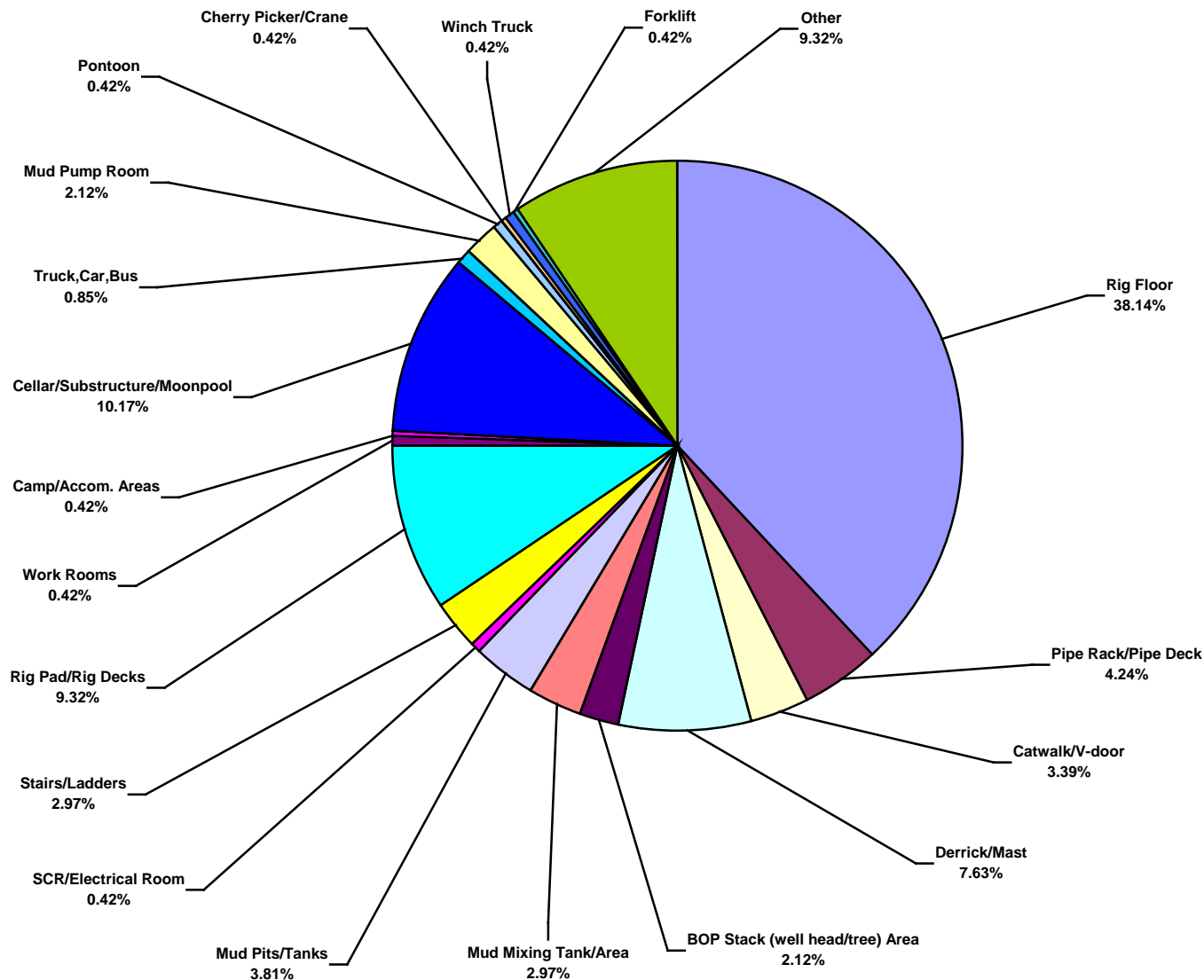
**US Land Total Lost Time Incidents by Operation (Chart 11)**  
Based on 236 Incidents



**US Land Total Recordable Incidents by Operation (Chart 12)**  
Based on 768 Incidents

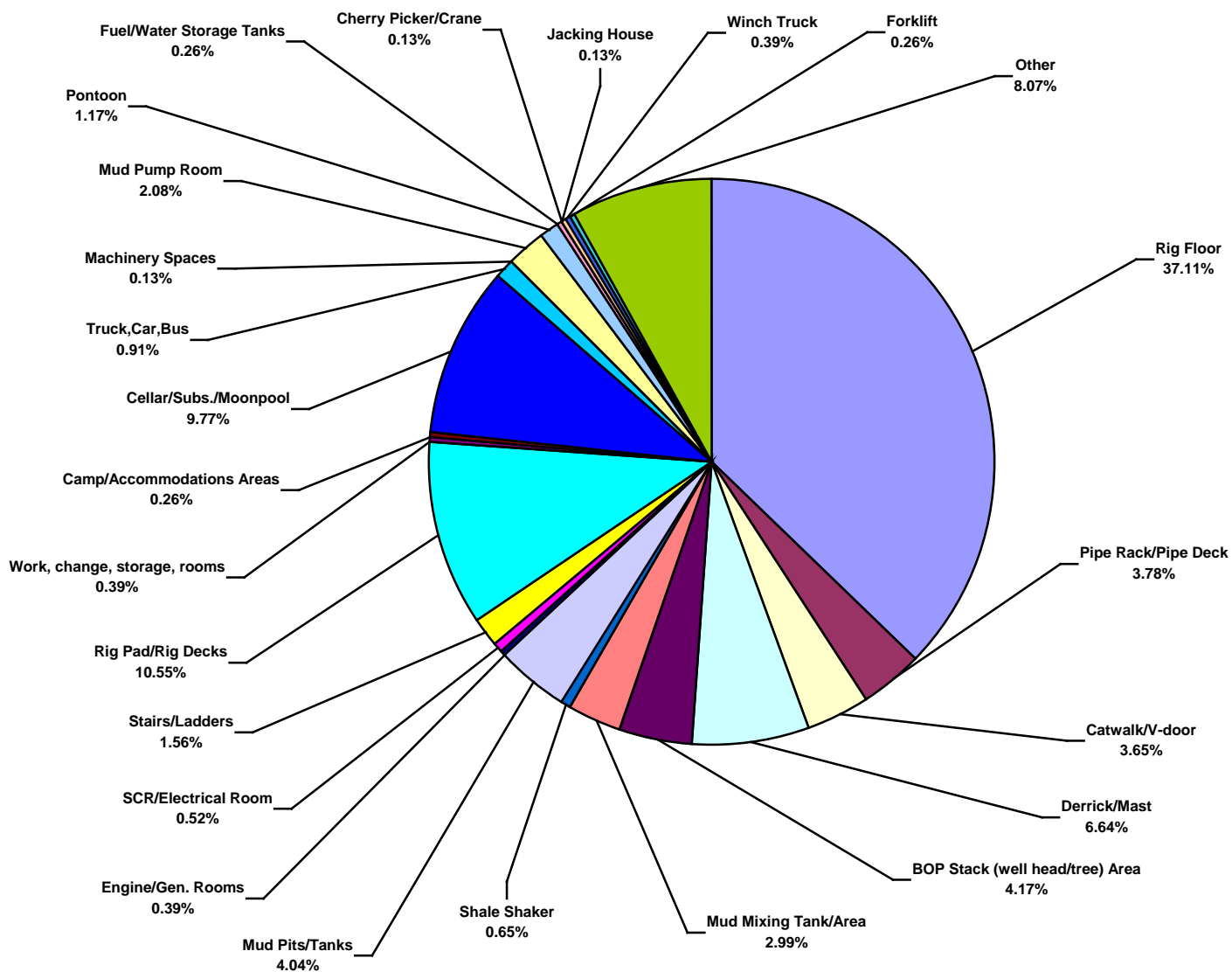


**US Land Total Lost Time Incidents by Location (Chart 13)**  
Based on 236 Incidents

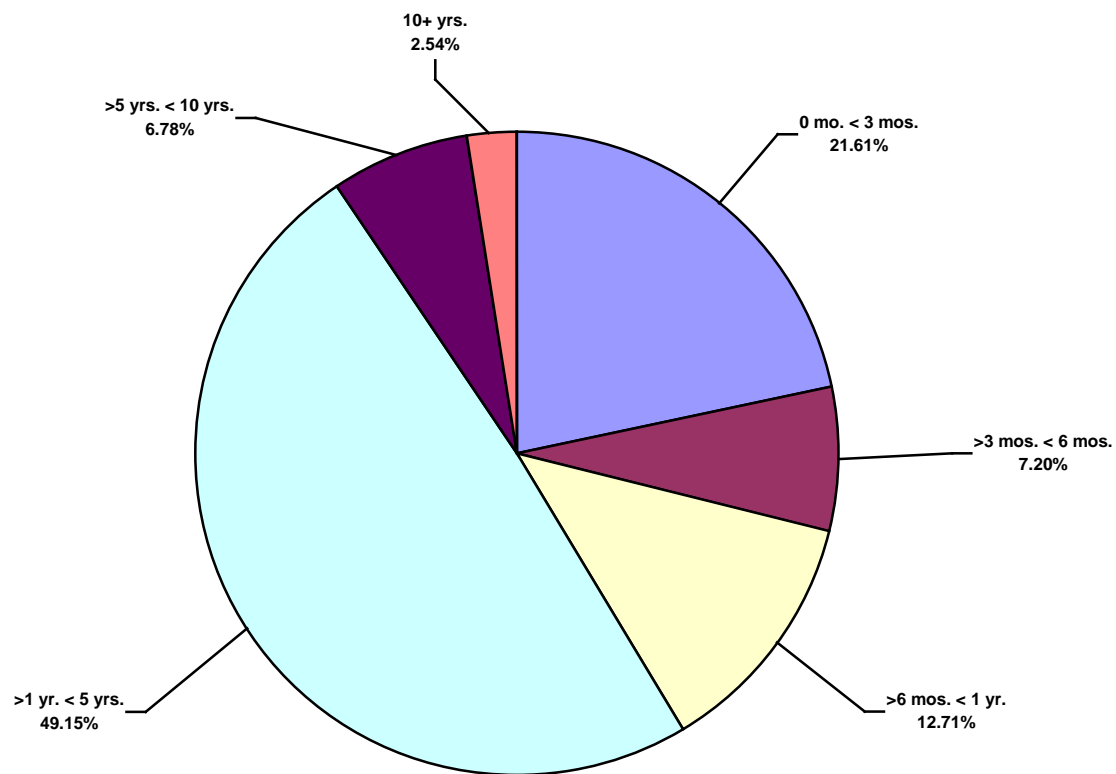




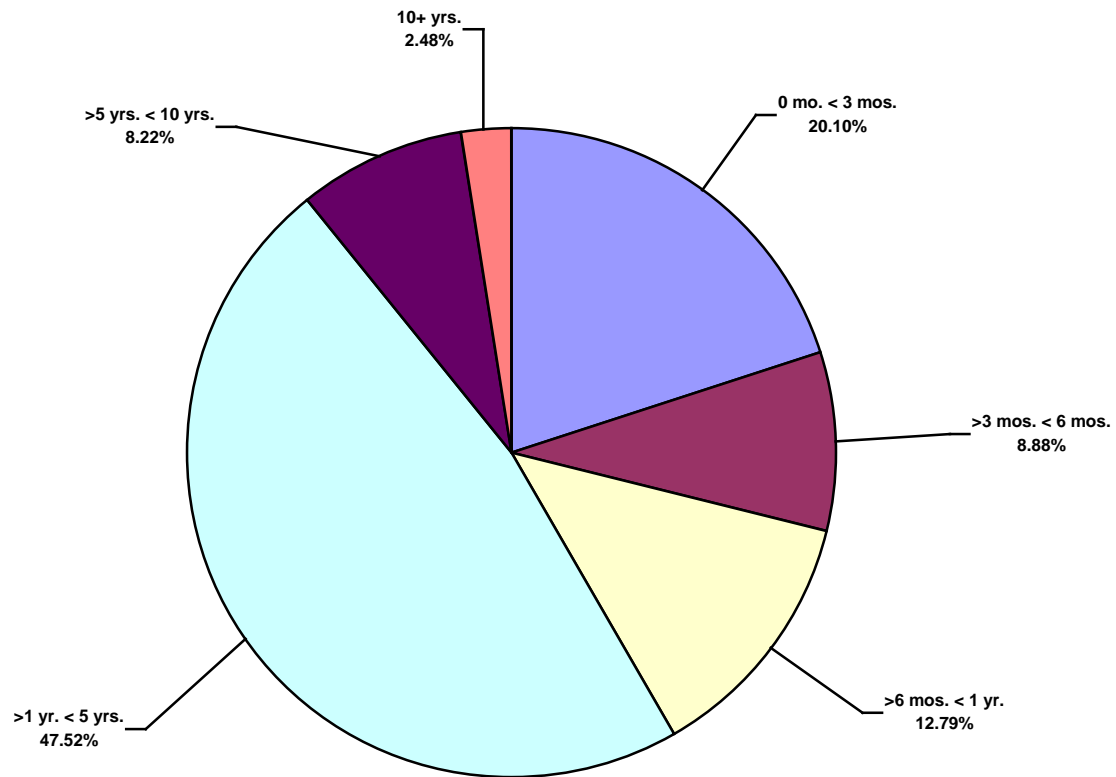
**US Land Total Recordable Incidents by Location (Chart 14)**  
Based on 768 Incidents



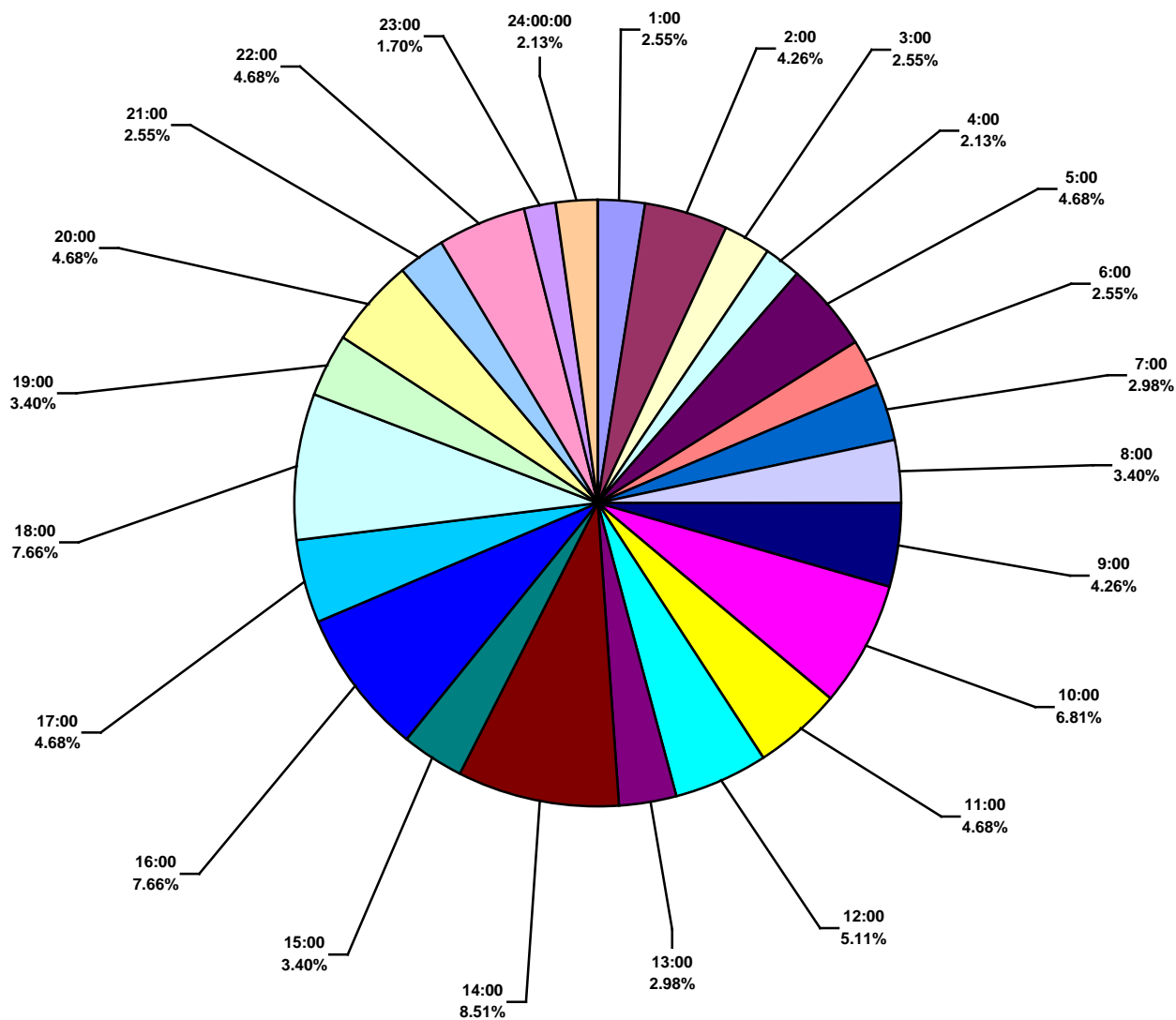
**US Land Total Lost Time Incidents by Time in Service (Chart 15)**  
Based on 236 Incidents



**US Land Total Recordable Incidents by Time in Service (Chart 16)**  
Based on 766 Incidents



**US Land Total Lost Time Incidents by Time of Day (Chart 17)**  
Based on 235 Incidents



**US Land Total Recordable Incidents by Time of Day (Chart 18)**  
Based on 767 Incidents

