



**IADC**

**IADC  
ISP PROGRAM**

**2013**



**Summary of Occupational  
Incidents  
(European Land Totals)**

*Issued 20 May 2014*

# Table of Contents

(Table of Contents is Hyperlinked, Just click on Topic & go)

IADC 2013 EUROPEAN LAND TOTALS (TABLE 1) .....	1
<i>European Land Total Incidence Rates vs Man-hours (Figure 1)</i> .....	1
IADC 2013 EUROPEAN LAND CHARTS .....	2
<i>European Land Total Lost Time Incidents by Month (Chart 1)</i> .....	2
<i>European Land Total Recordable Incidents by Month (Chart 2)</i> .....	3
<i>European Land Total Lost Time Incidents by Occupation (Chart 3)</i> .....	4
<i>European Land Total Recordable Incidents by Occupation (Chart 4)</i> .....	5
<i>European Land Total Lost Time Incidents by Body Part (Chart 5)</i> .....	6
<i>European Land Total Recordable Incidents by Body Part (Chart 6)</i> .....	7
<i>European Land Total Lost Time Incidents by Incident Type (Chart 7)</i> .....	8
<i>European Land Total Recordable Incidents by Incident Type (Chart 8)</i> .....	9
<i>European Land Total Lost Time Incidents by Equipment (Chart 9)</i> .....	10
<i>European Land Total Recordable Incidents by Equipment (Chart 10)</i> .....	11
<i>European Land Total Lost Time Incidents by Operation (Chart 11)</i> .....	12
<i>European Land Total Recordable Incidents by Operation (Chart 12)</i> .....	13
<i>European Land Total Lost Time Incidents by Location (Chart 13)</i> .....	14
<i>European Land Total Recordable Incidents by Location (Chart 14)</i> .....	15
<i>European Land Total Lost Time Incidents by Time in Service (Chart 15)</i> .....	16
<i>European Land Total Recordable Incidents by Time in Service (Chart 16)</i> .....	17
<i>European Land Total Lost Time Incidents by Time of Day (Chart 17)</i> .....	18
<i>European Land Total Recordable Incidents by Time of Day (Chart 18)</i> .....	19

## IADC 2013 European Land Totals (Table 1)

	<u>Total</u>
Total Man-hours	58,137,011
Total Medical Treatment Incidents	26
Total Restricted Work Incidents	15
Total Lost Time Incidents	96
Total Fatalities	2
Total Recordables	139
MTO Incidence Rate	0.09
RWC Incidence Rate	0.05
LTI Incidence Rate	0.34
LTI Frequency Rate	1.69
DART Incidence Rate	0.39
DART Frequency Rate	1.94
Recordable Incidence Rate	0.48
Recordable Frequency Rate	2.39

Companies Reporting: Land – 14

Medical Treatment Incidence Rate = MTOs X 200,000

Restricted Work Incidence Rate = RWCs X 200,000

Lost Time Incidence Rate = LTIs + FTLs X 200,000

DART Incidence Rate = LTIs + RWC X 200,000

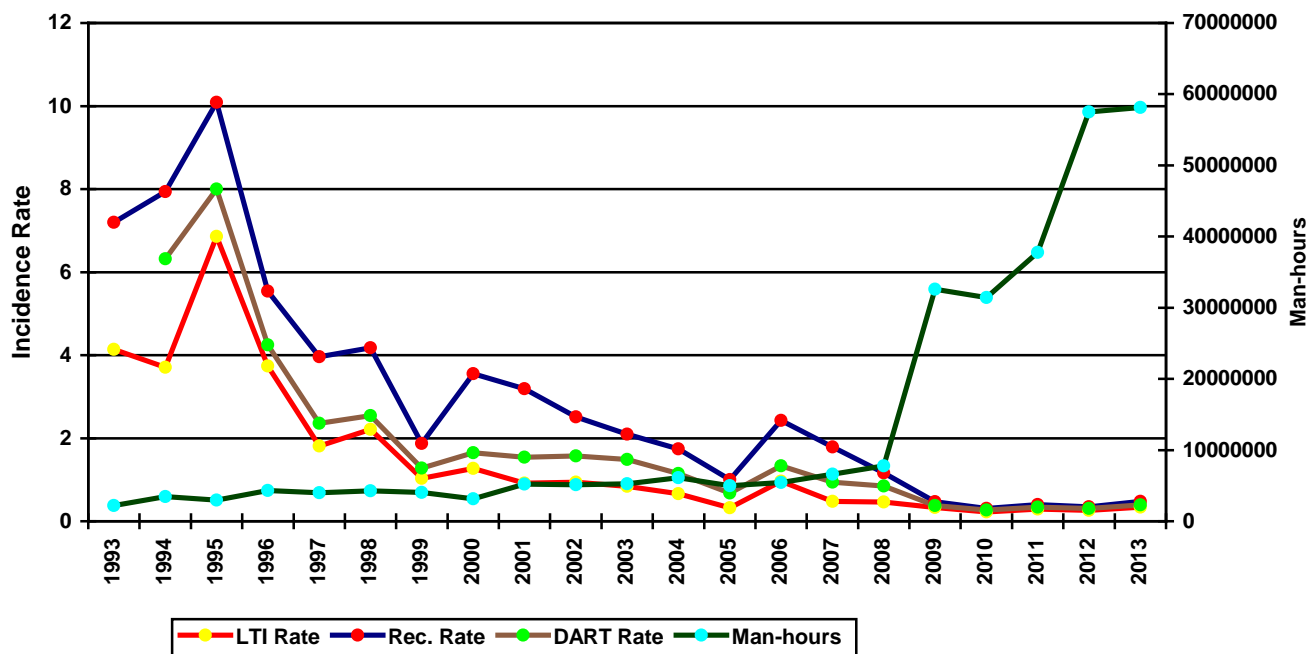
Recordable Incidence Rate = RCRD X 200,000

Lost Time Frequency Rate = LTIs +FTLs X 1,000,000

DART Frequency Rate = LTIs + RWC X 1,000,000

Recordable Frequency Rate = RCRD X 1,000,000

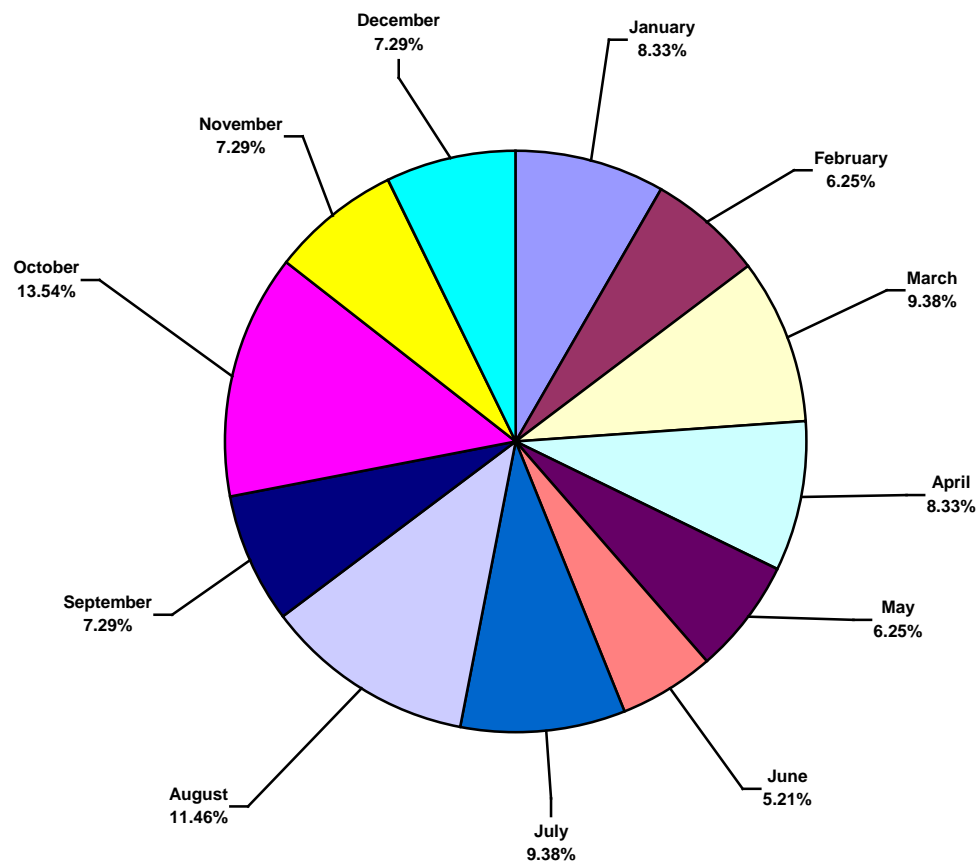
European Land Total Incidence Rates vs Man-hours (Figure 1)



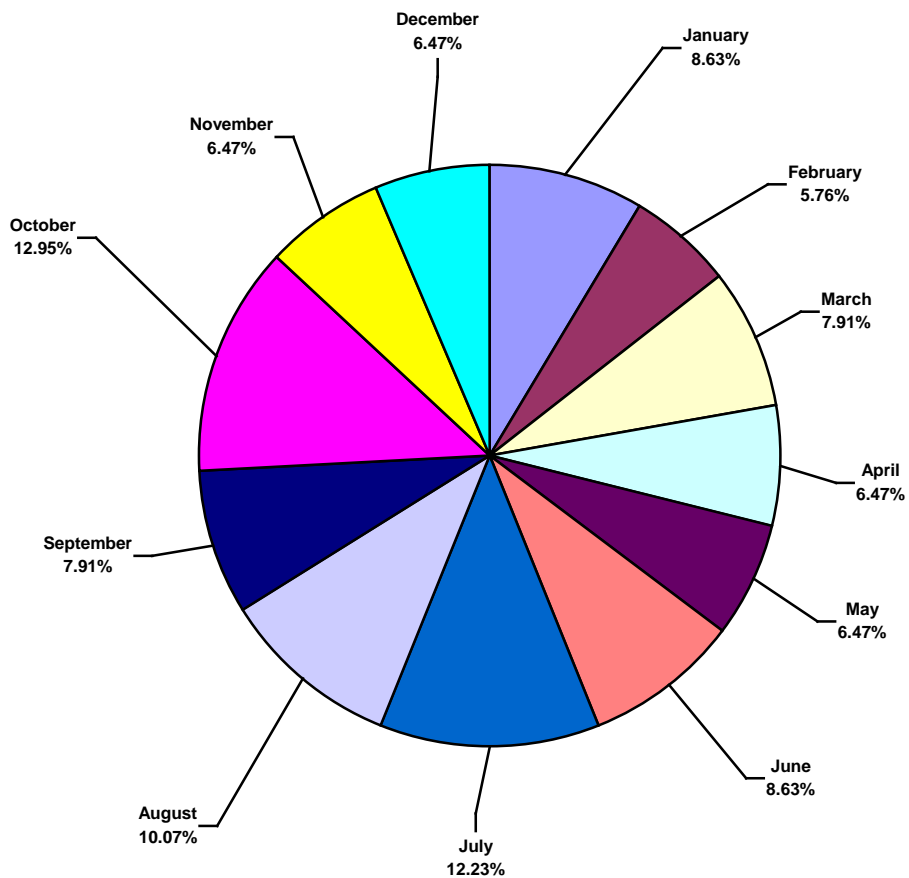
# IADC 2013 European Land Charts

## European Land Total Lost Time Incidents by Month (Chart 1)

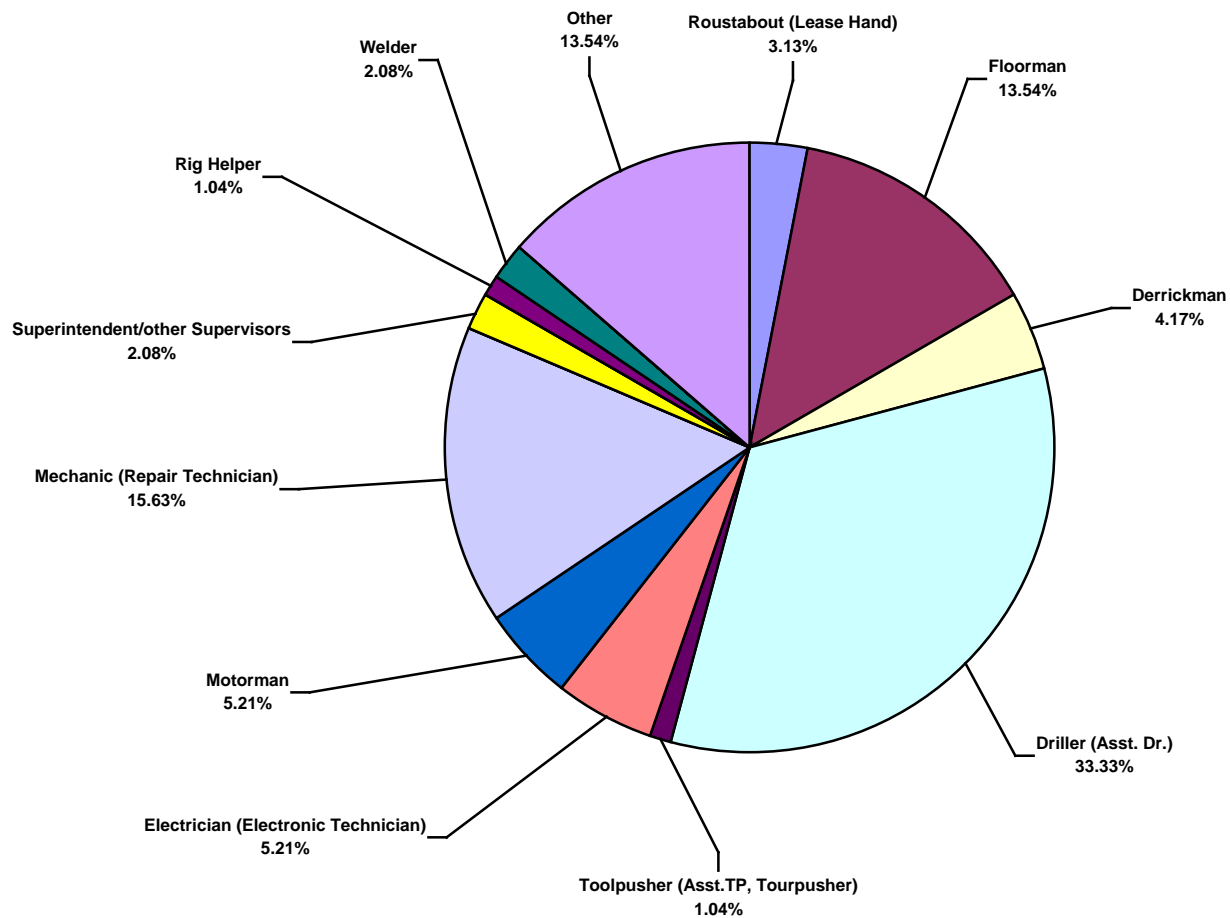
Based on 96 Incidents



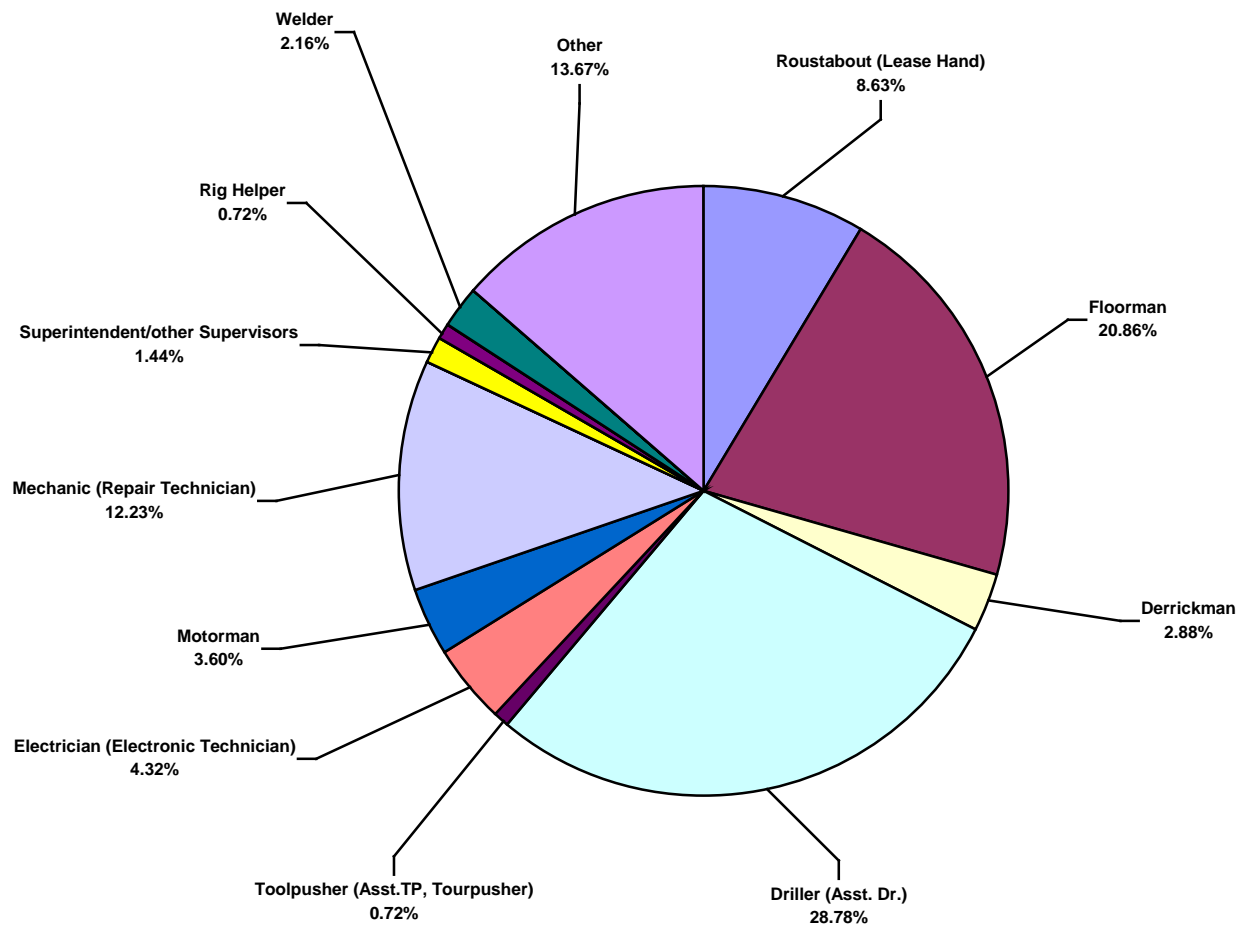
European Land Total Recordable Incidents by Month (Chart 2)  
Based on 139 Incidents



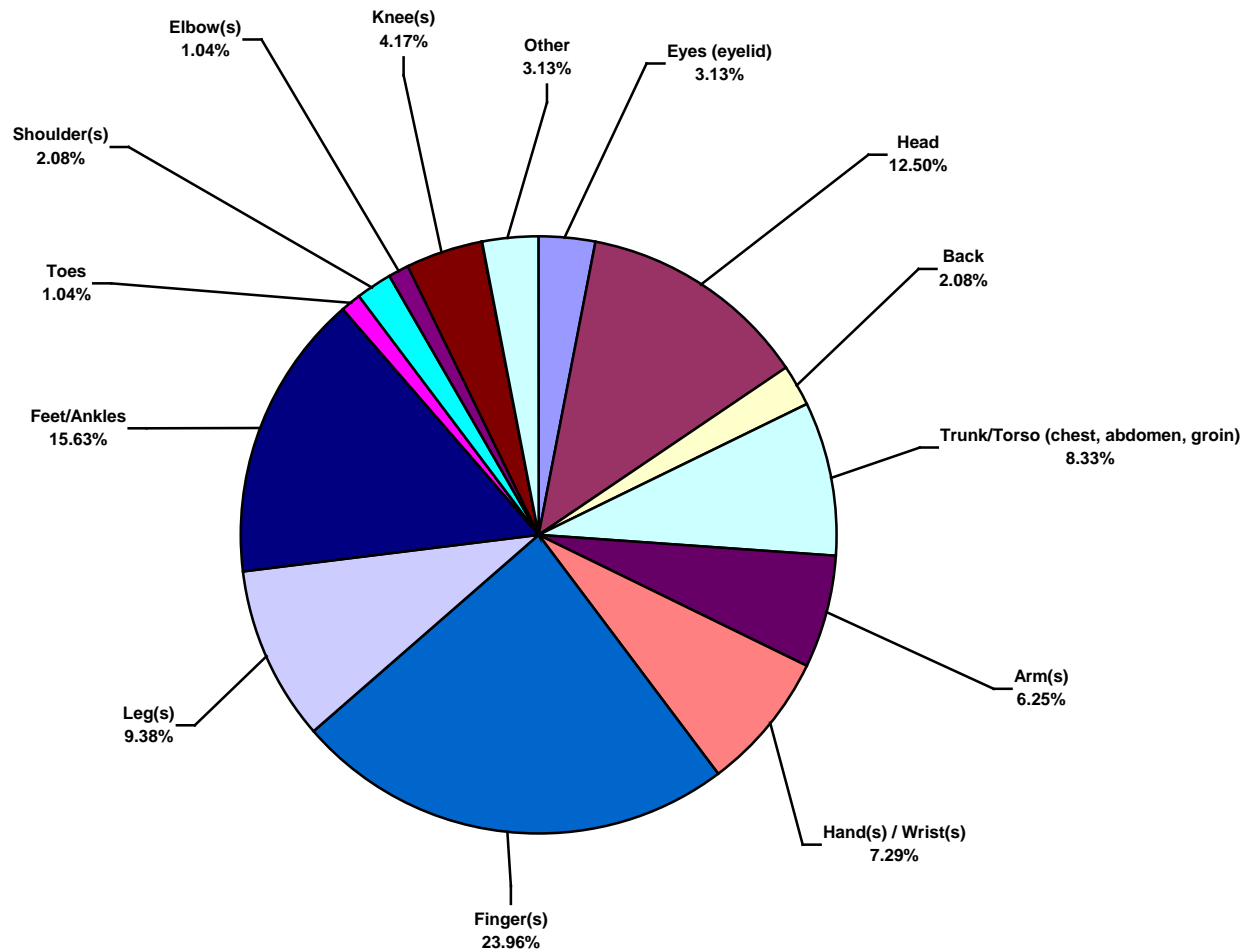
**European Land Total Lost Time Incidents by Occupation (Chart 3)**  
Based on 96 Incidents



**European Land Total Recordable Incidents by Occupation (Chart 4)**  
Based on 139 Incidents

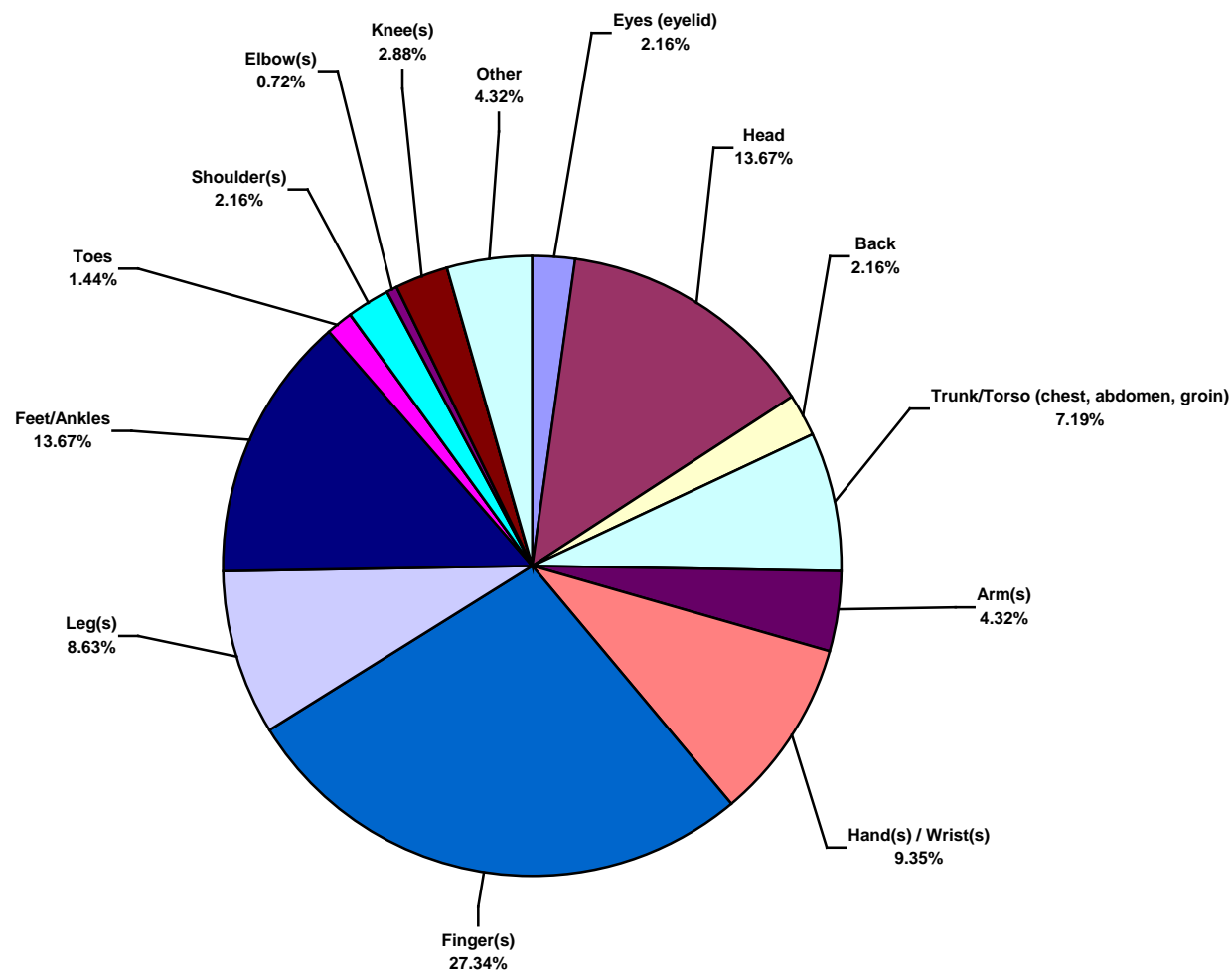


**European Land Total Lost Time Incidents by Body Part (Chart 5)**  
Based on 96 Incidents

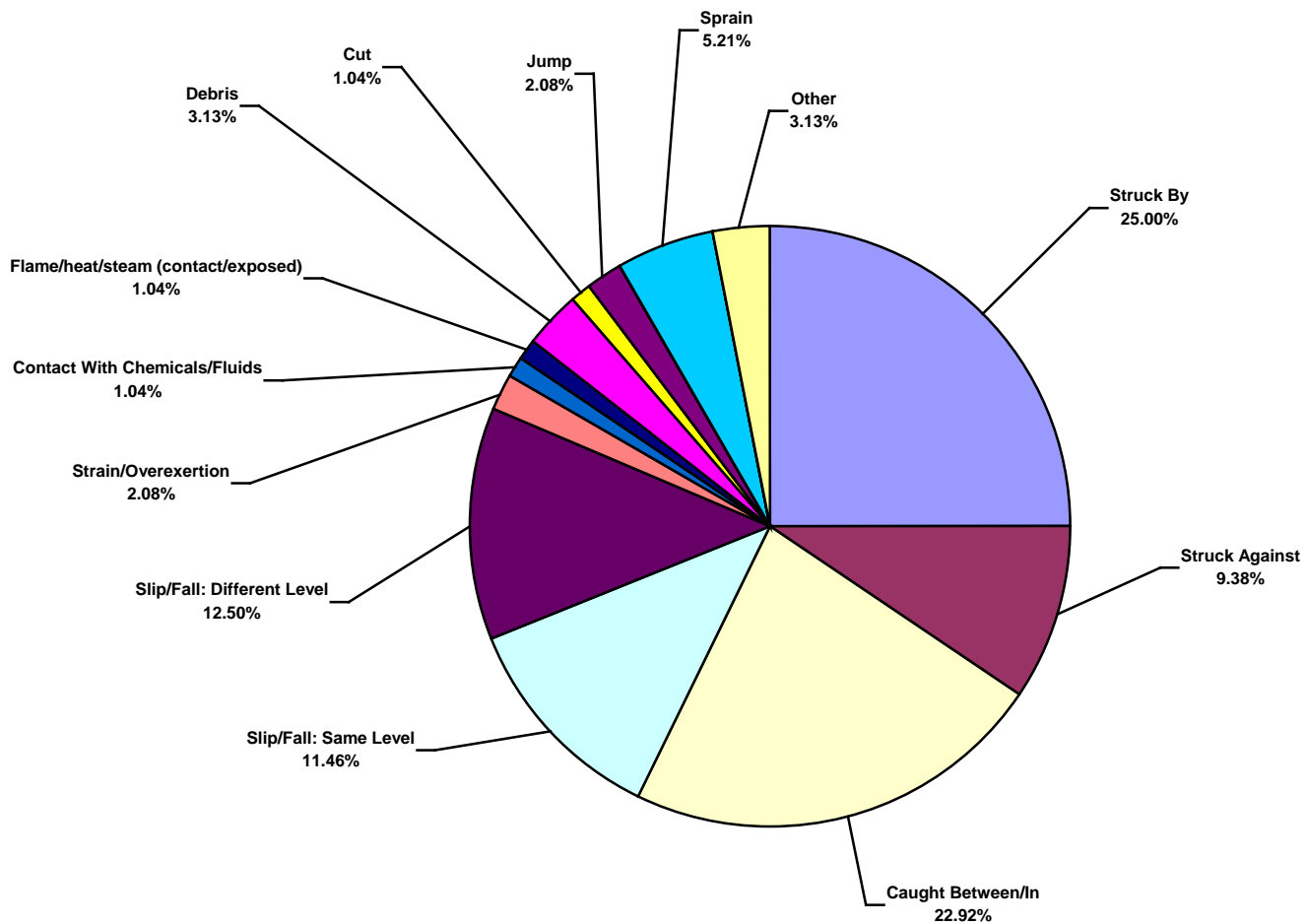




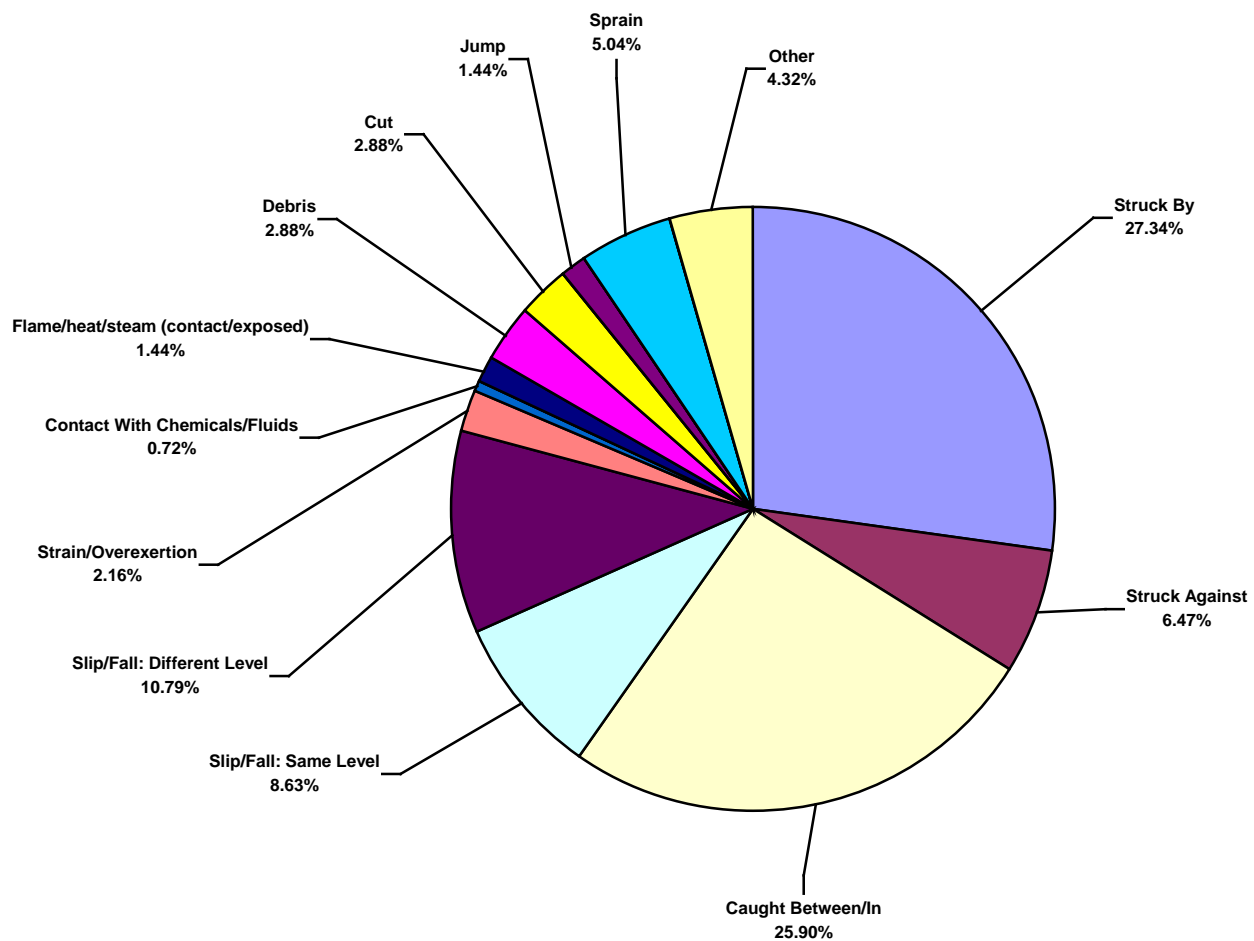
European Land Total Recordable Incidents by Body Part (Chart 6)  
Based on 139 Incidents



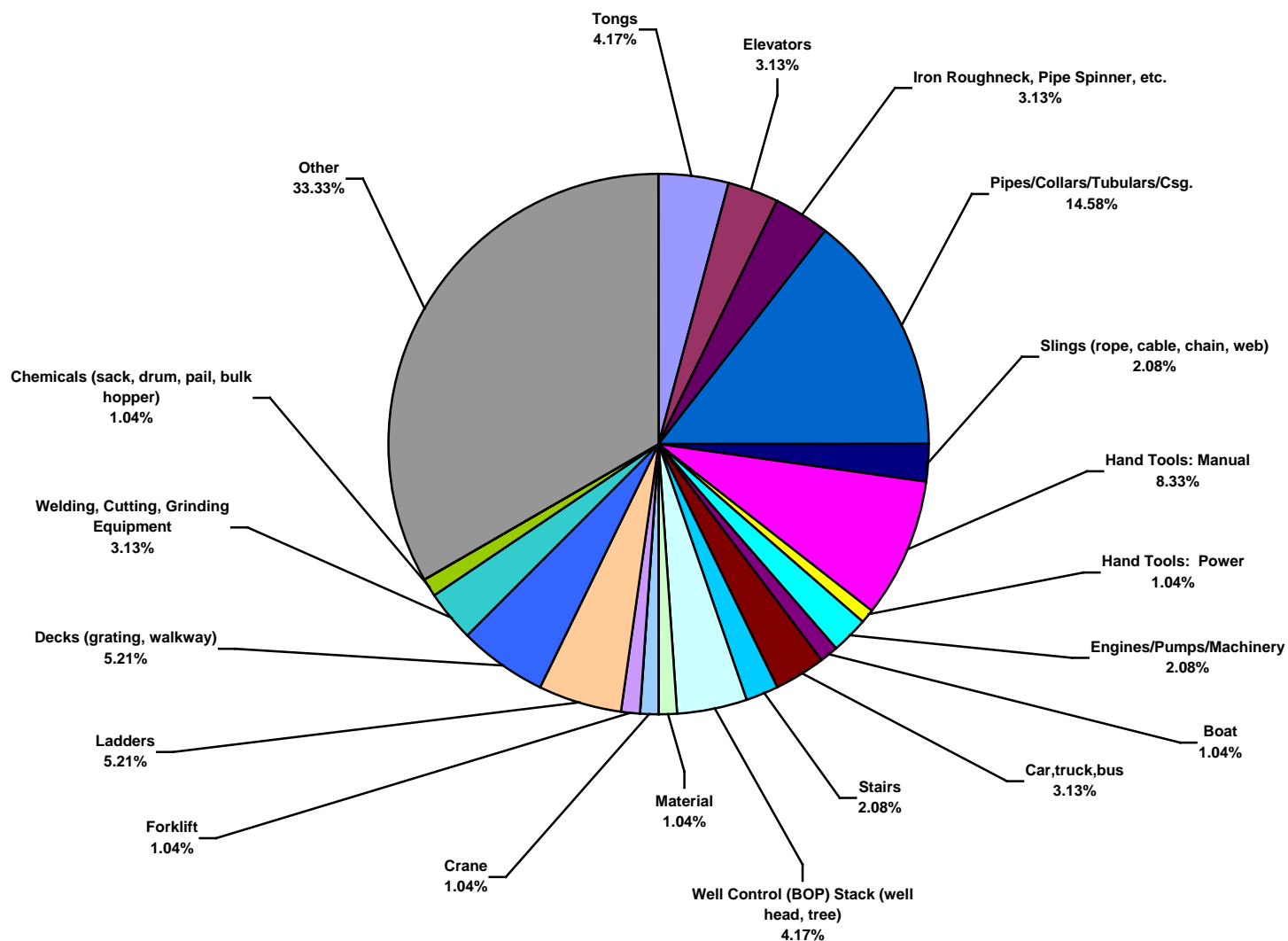
**European Land Total Lost Time Incidents by Incident Type (Chart 7)**  
Based on 96 Incidents



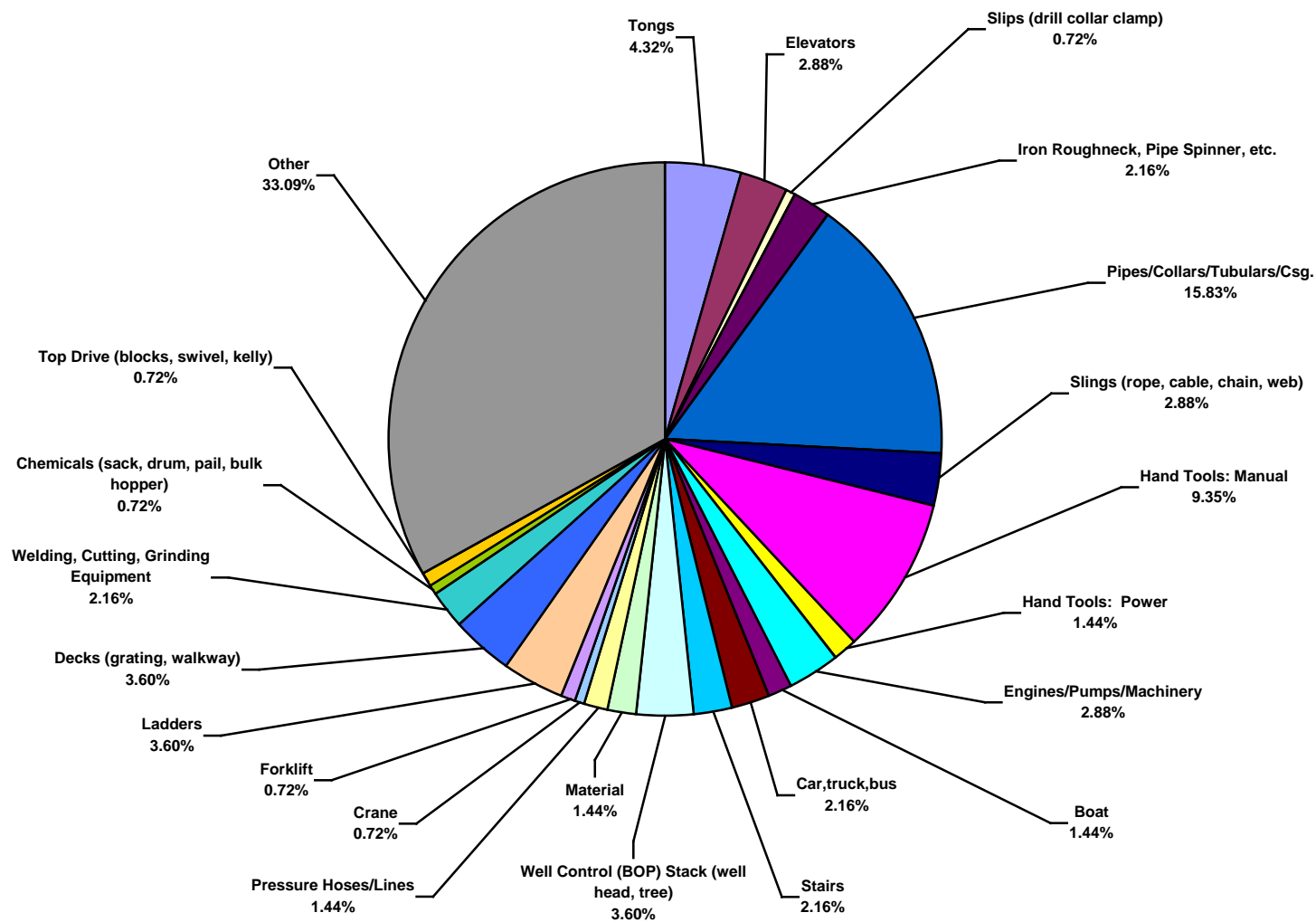
**European Land Total Recordable Incidents by Incident Type (Chart 8)**  
Based on 139 Incidents



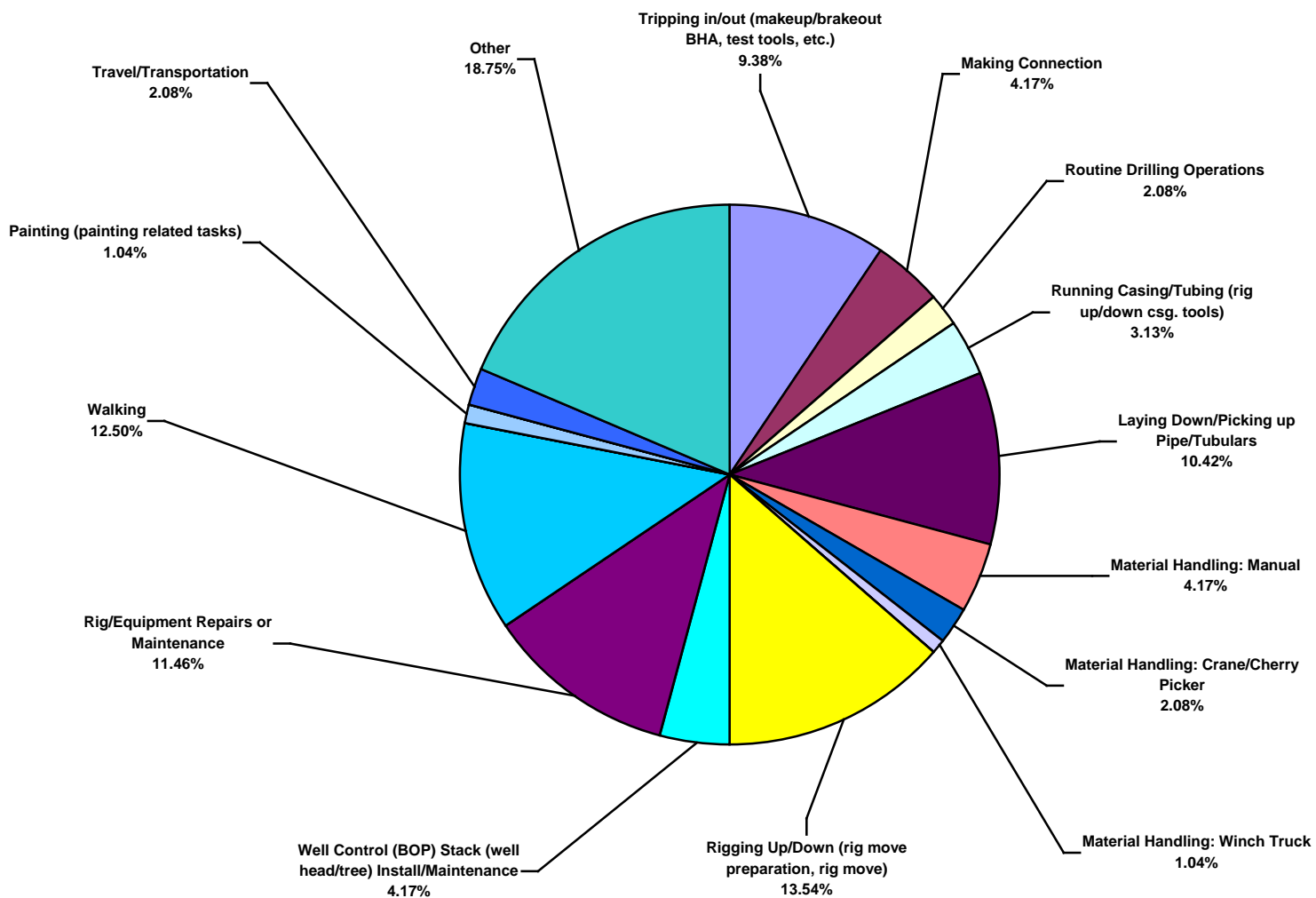
**European Land Total Lost Time Incidents by Equipment (Chart 9)**  
Based on 96 Incidents



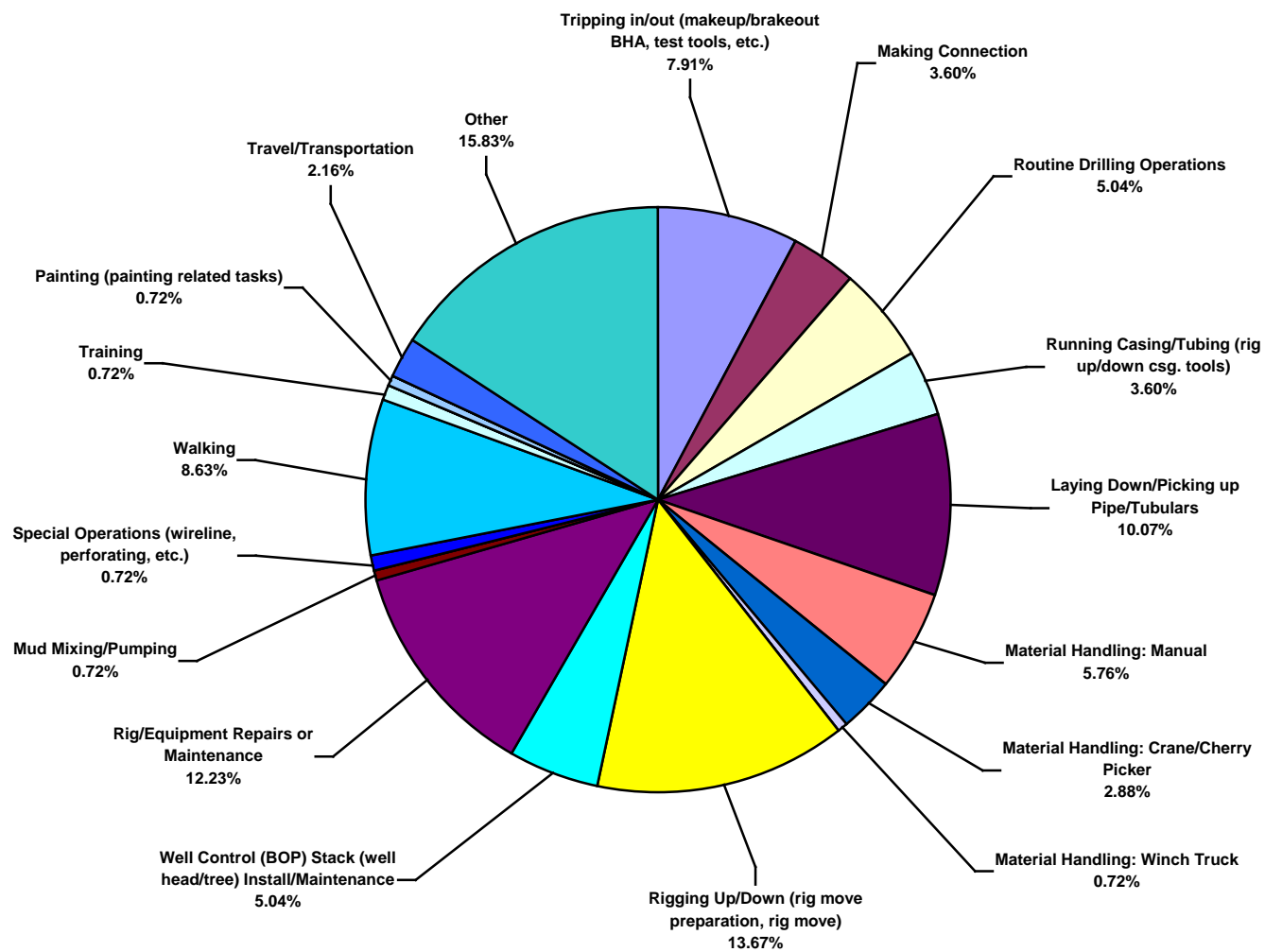
**European Land Total Recordable Incidents by Equipment (Chart 10)**  
Based on 139 Incidents



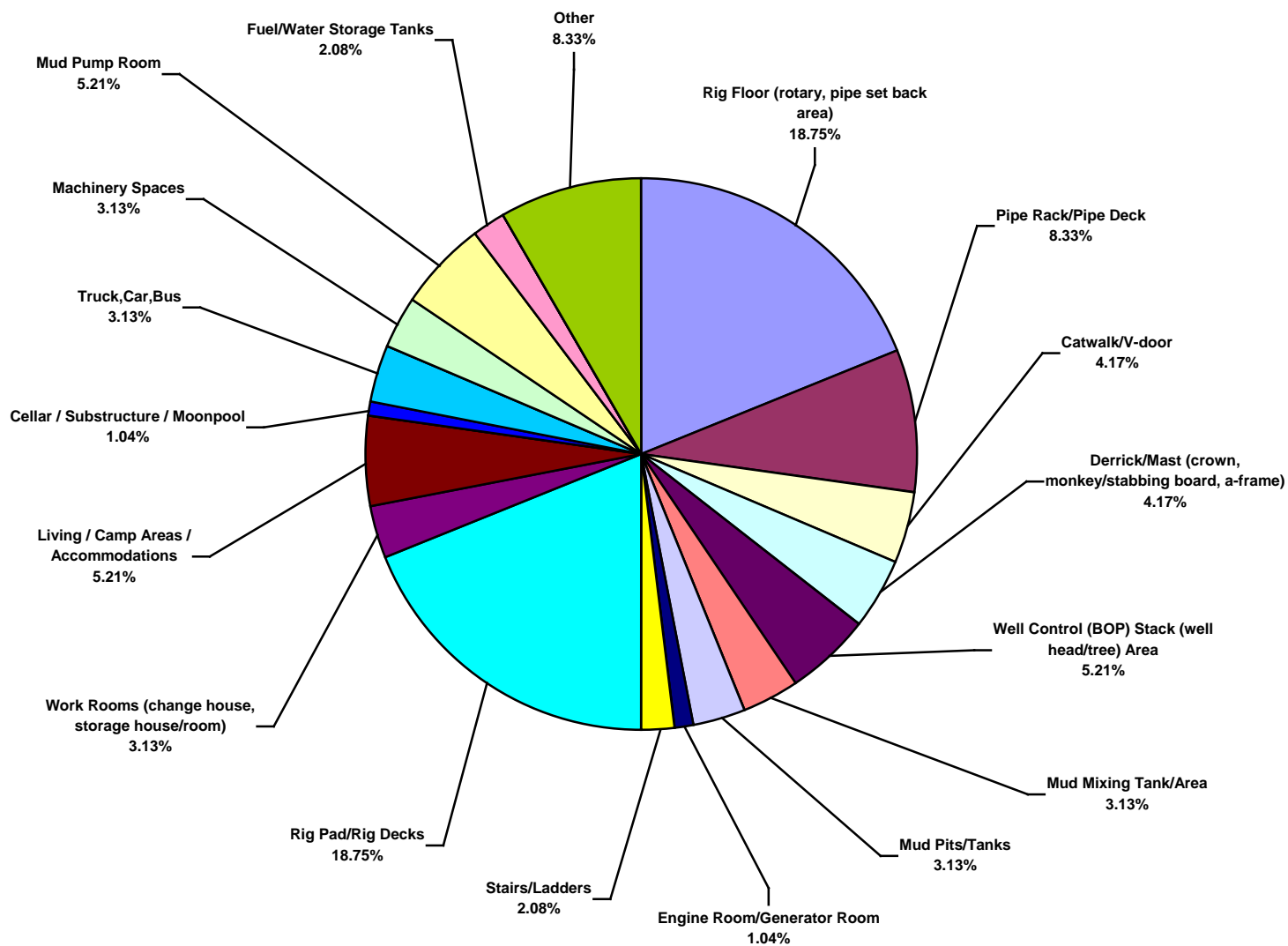
**European Land Total Lost Time Incidents by Operation (Chart 11)**  
Based on 96 Incidents



**European Land Total Recordable Incidents by Operation (Chart 12)**  
Based on 139 Incidents

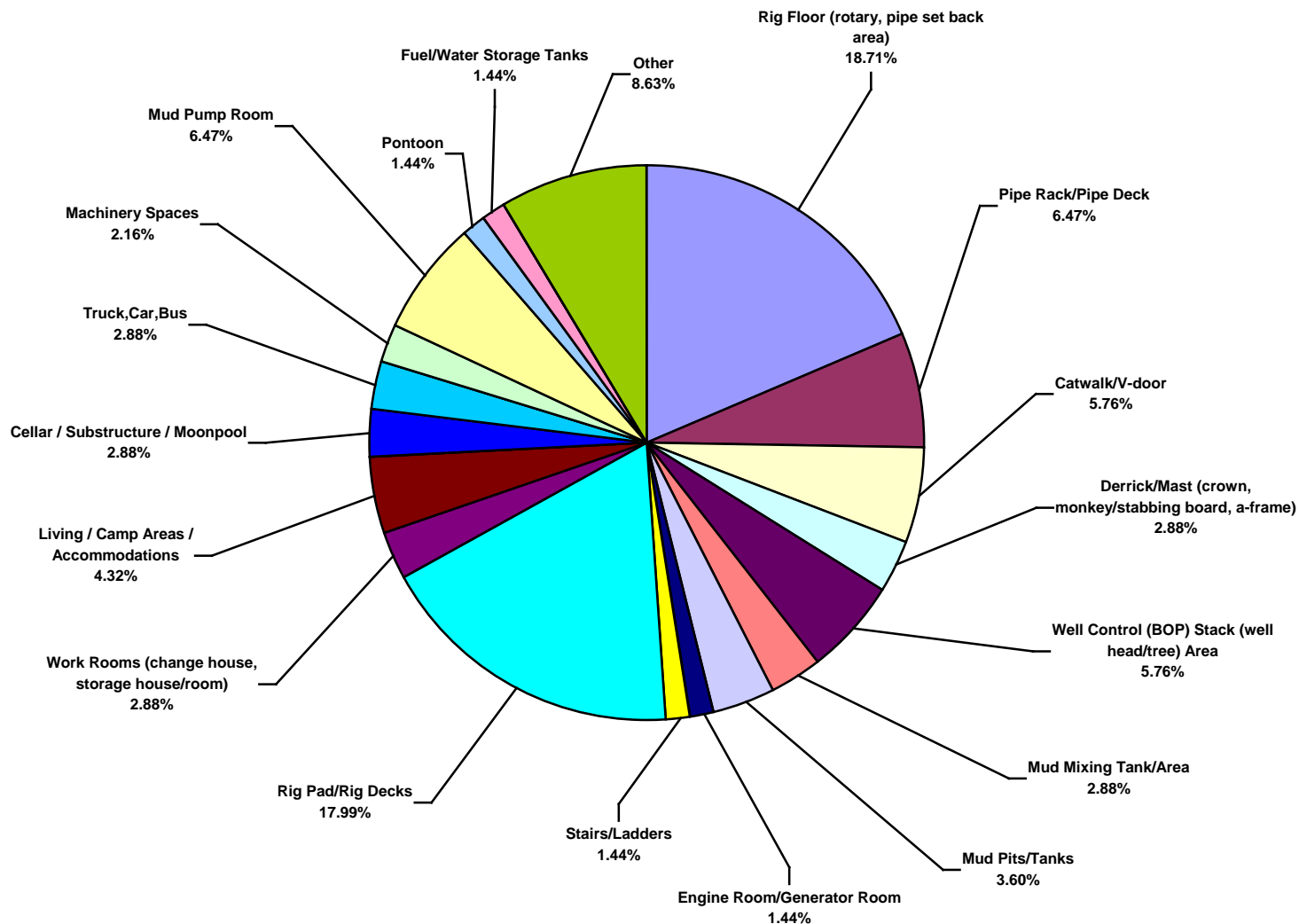


**European Land Total Lost Time Incidents by Location (Chart 13)**  
Based on 96 Incidents

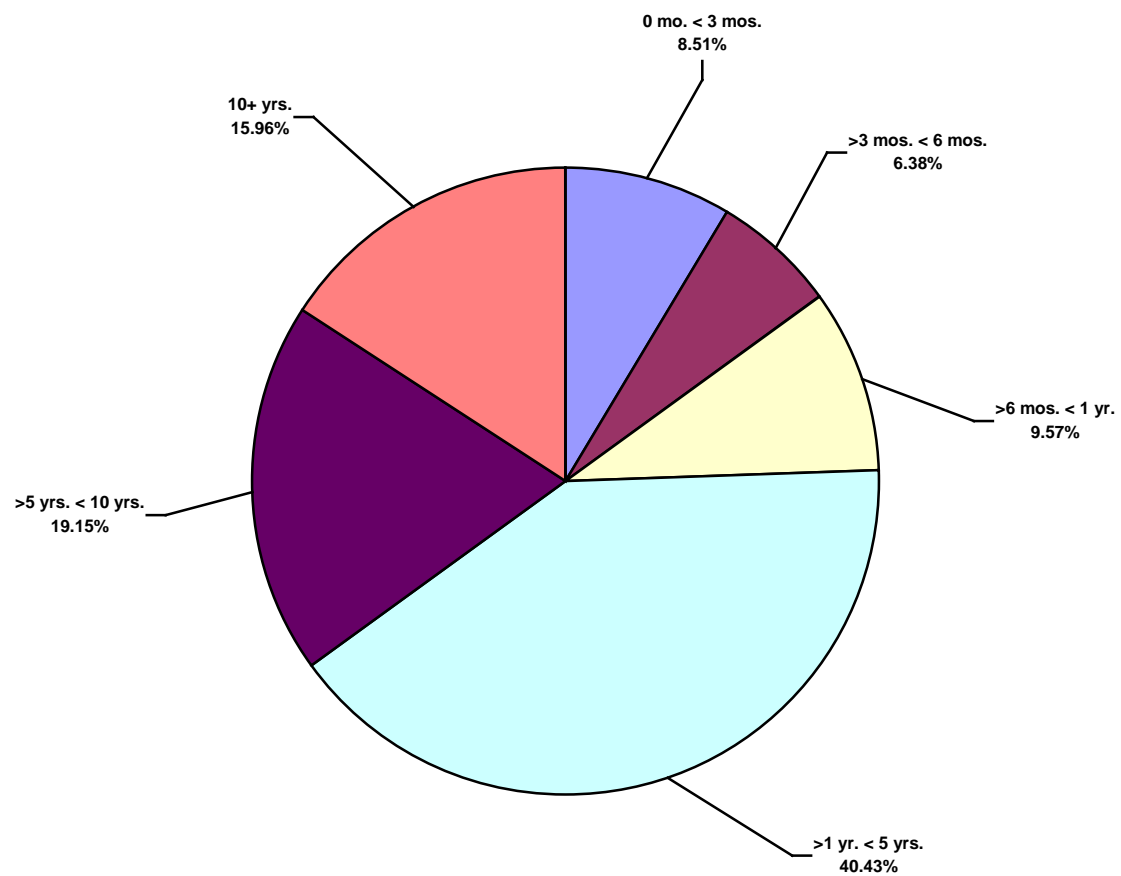




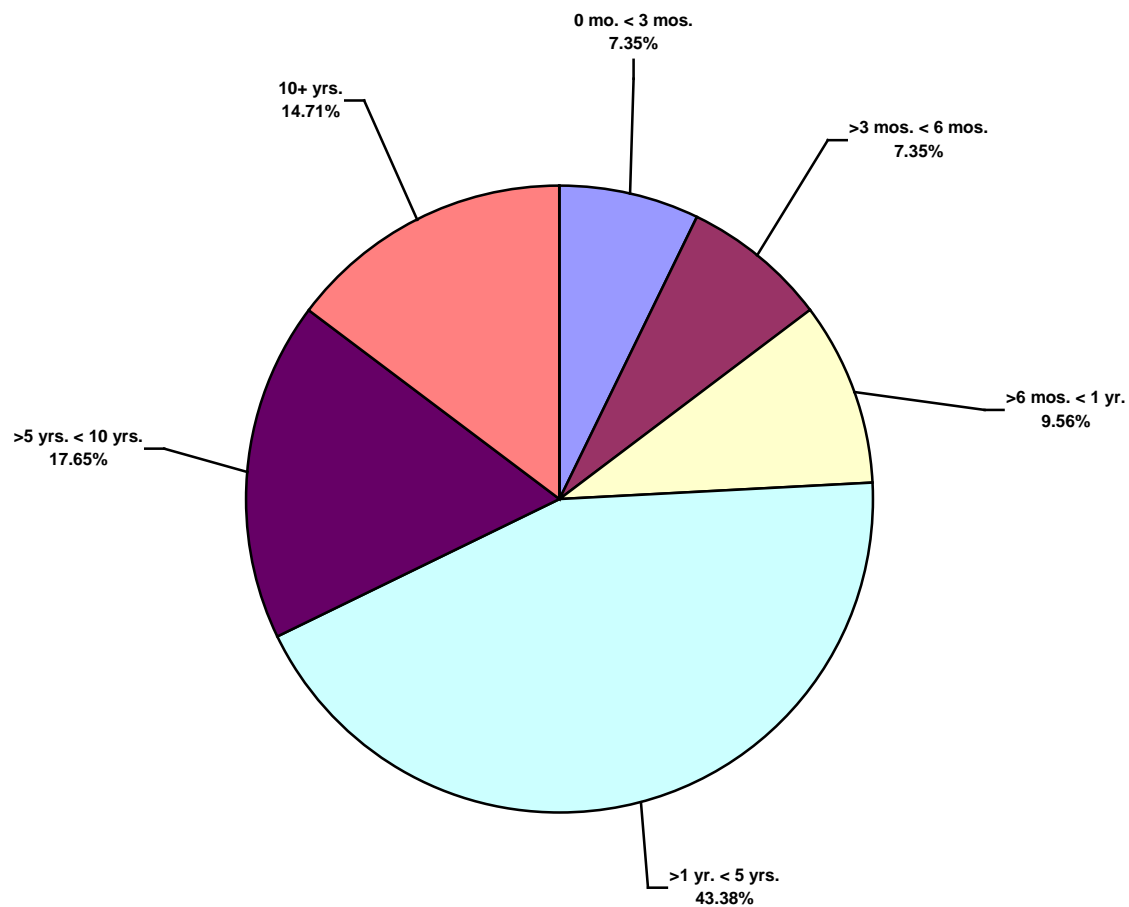
**European Land Total Recordable Incidents by Location (Chart 14)**  
Based on 139 Incidents



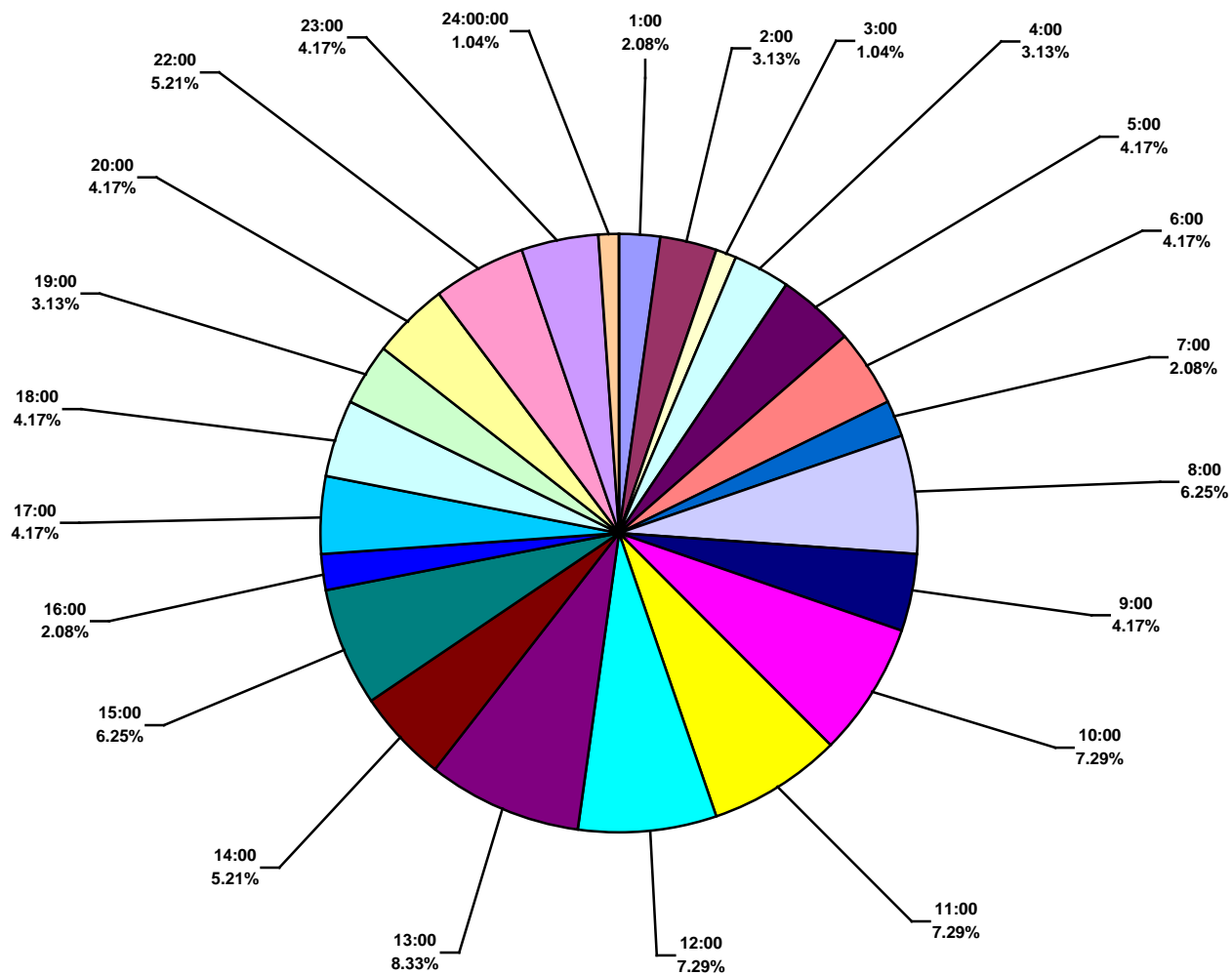
European Land Total Lost Time Incidents by Time in Service (Chart 15)  
Based on 94 Incidents



European Land Total Recordable Incidents by Time in Service (Chart 16)  
Based on 136 Incidents



**European Land Total Lost Time Incidents by Time of Day (Chart 17)**  
Based on 96 Incidents



**European Land Total Recordable Incidents by Time of Day (Chart 18)**  
Based on 139 Incidents

