



**IADC**

**IADC  
ISP PROGRAM**

**2013**



**Summary of Occupational  
Incidents  
(Asia Pacific Water Totals)**

*Issued 20 May 2014*

# Table of Contents

(Table of Contents is Hyperlinked, Just click on Topic & go)

IADC 2013 ASIA PACIFIC WATER TOTALS (TABLE 1).....	1
<i>Asia Pacific Water Incidence Rates vs Man-hours (Figure 1)</i> .....	1
IADC 2013 ASIA PACIFIC WATER CHARTS .....	2
<i>Asia Pacific Water Total Lost Time Incidents by Month (Chart 1)</i> .....	2
<i>Asia Pacific Water Total Recordable Incidents by Month (Chart 2)</i> .....	3
<i>Asia Pacific Water Total Lost Time Incidents by Occupation (Chart 3)</i> .....	4
<i>Asia Pacific Water Total Recordable Incidents by Occupation (Chart 4)</i> .....	5
<i>Asia Pacific Water Total Lost Time Incidents by Body Part (Chart 5)</i> .....	6
<i>Asia Pacific Water Total Recordable Incidents by Body Part (Chart 6)</i> .....	7
<i>Asia Pacific Water Total Lost Time Incidents by Incident Type (Chart 7)</i> .....	8
<i>Asia Pacific Water Total Recordable Incidents by Incident Type (Chart 8)</i> .....	9
<i>Asia Pacific Water Total Lost Time Incidents by Equipment (Chart 9)</i> .....	10
<i>Asia Pacific Water Total Recordable Incidents by Equipment (Chart 10)</i> .....	11
<i>Asia Pacific Water Total Lost Time Incidents by Operation (Chart 11)</i> .....	12
<i>Asia Pacific Water Total Recordable Incidents by Operation (Chart 12)</i> .....	13
<i>Asia Pacific Water Total Lost Time Incidents by Location (Chart 13)</i> .....	14
<i>Asia Pacific Water Total Recordable Incidents by Location (Chart 14)</i> .....	15
<i>Asia Pacific Water Total Lost Time Incidents by Time in Service (Chart 15)</i> .....	16
<i>Asia Pacific Water Total Recordable Incidents by Time in Service (Chart 16)</i> .....	17
<i>Asia Pacific Water Total Lost Time Incidents by Time of Day (Chart 17)</i> .....	18
<i>Asia Pacific Water Total Recordable Incidents by Time of Day (Chart 18)</i> .....	19

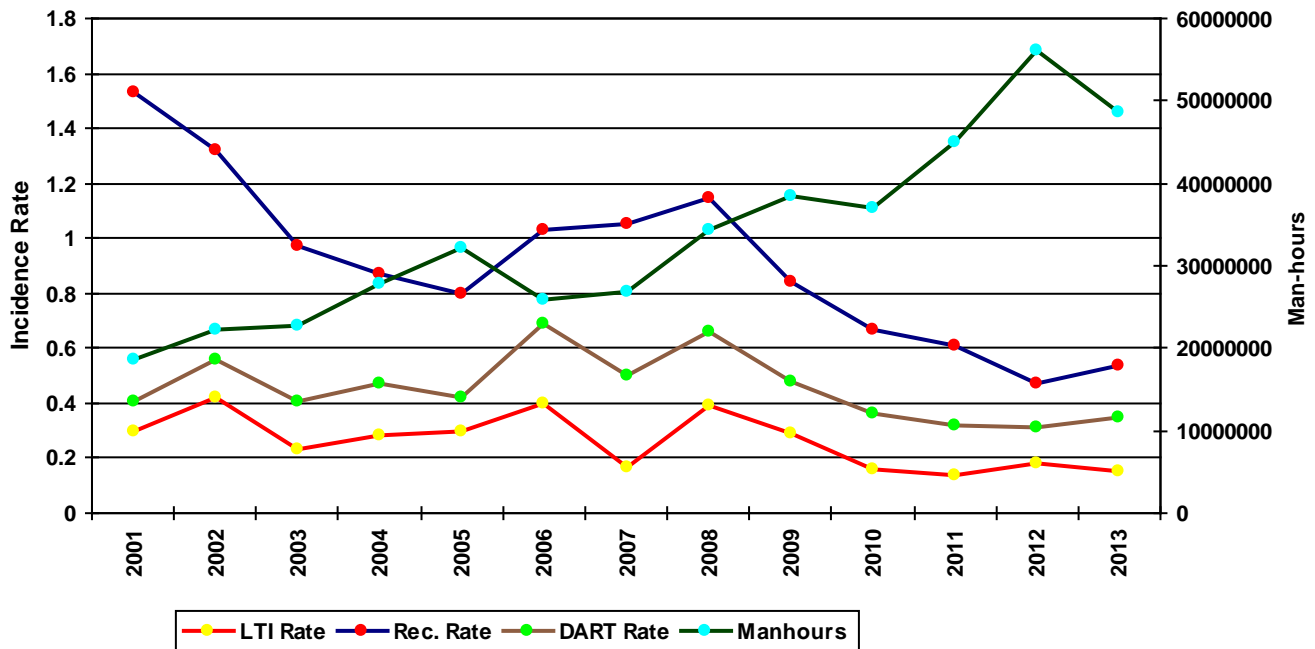
## IADC 2013 Asia Pacific Water Totals (Table 1)

	<u>Totals</u>
Total Man-hours	48,554,010
Total Medical Treatment Incidents	48
Total Restricted Work Incidents	47
Total Lost Time Incidents	37
Total Fatalities	0
Total Recordables	132
MTO Incidence Rate	0.20
RWC Incidence Rate	0.19
LTI Incidence Rate	0.15
LTI Frequency Rate	0.76
DART Incidence Rate	0.35
DART Frequency Rate	1.73
Recordable Incidence Rate	0.54
Recordable Frequency Rate	2.72

MEDICAL TREATMENT INCIDENCE RATE = MTOs X 200,000 / MANHOURS (LTIs NOT INCLUDED)  
 RESTRICTED WORK INCIDENCE RATE = RWCs X 200,000 / MANHOURS (LTIs NOT INCLUDED)  
 LOST TIME INCIDENCE RATE = (LTIs+FTLs) X 200,000 / MANHOURS  
 LOST TIME FREQUENCY RATE = (LTIs+FTLs) X 1,000,000 / MANHOURS  
 DART INCIDENCE RATE = (LTIs+FTLs+RWCs) X 200,000 / MANHOURS  
 DART INCIDENCE RATE = (LTIs+FTLs+RWCs) X 1,000,000 / MANHOURS  
 RECORDABLE INCIDENCE RATE = RECORDABLES X 200,000 / MANHOURS  
 RECORDABLE FREQUENCY RATE = RECORDABLES X 1,000,000 / MANHOURS

Companies Reporting: Water – 30

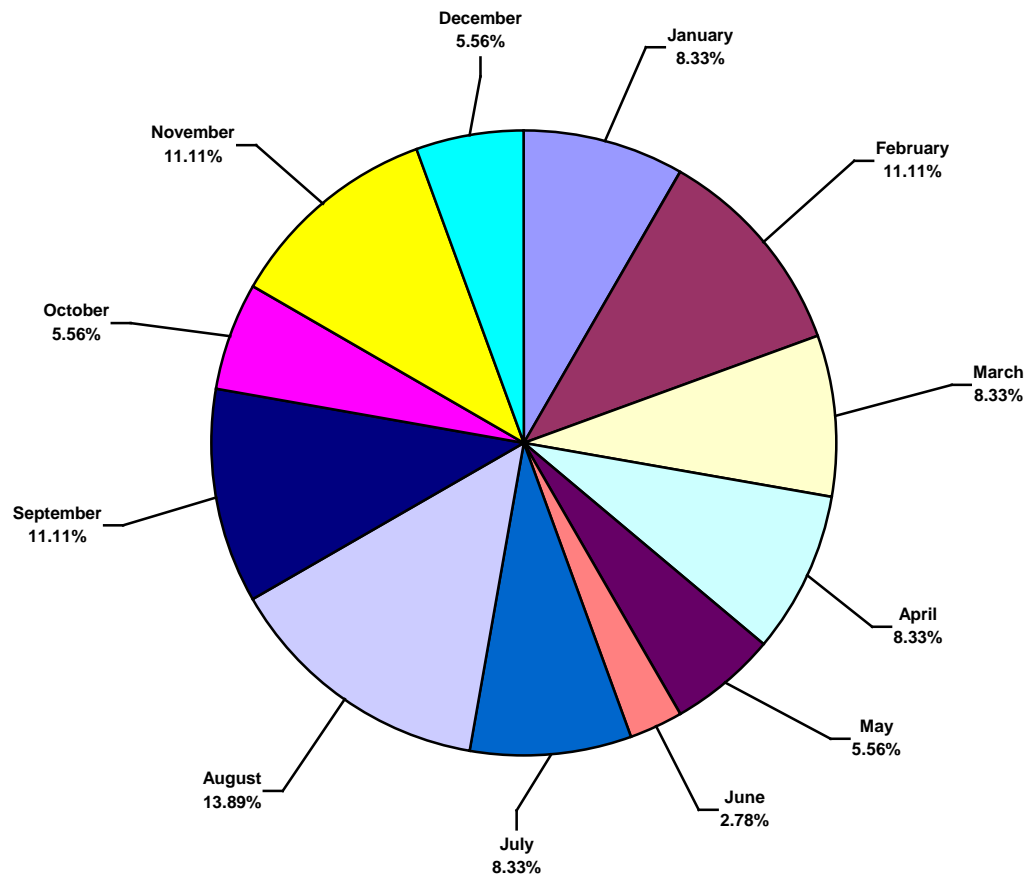
**Asia Pacific Water Incidence Rates vs Man-hours (Figure 1)**



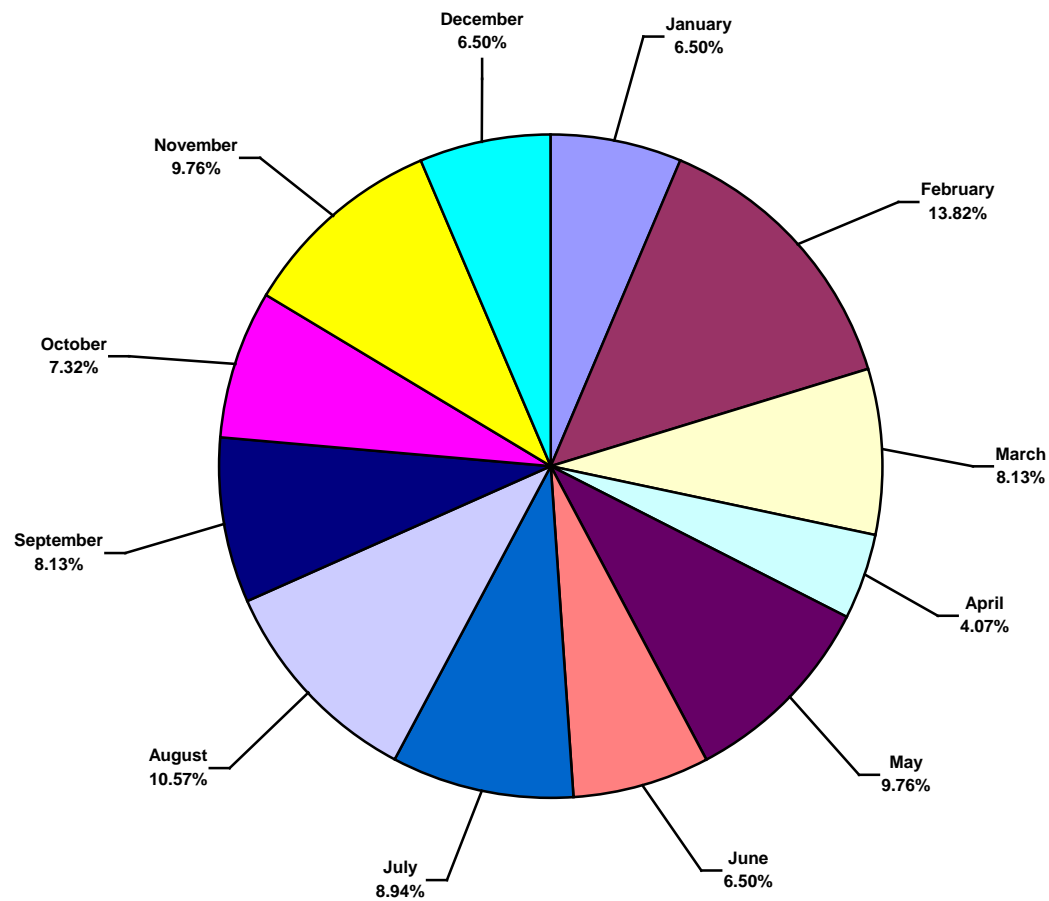
# IADC 2013 Asia Pacific Water Charts

## Asia Pacific Water Total Lost Time Incidents by Month (Chart 1)

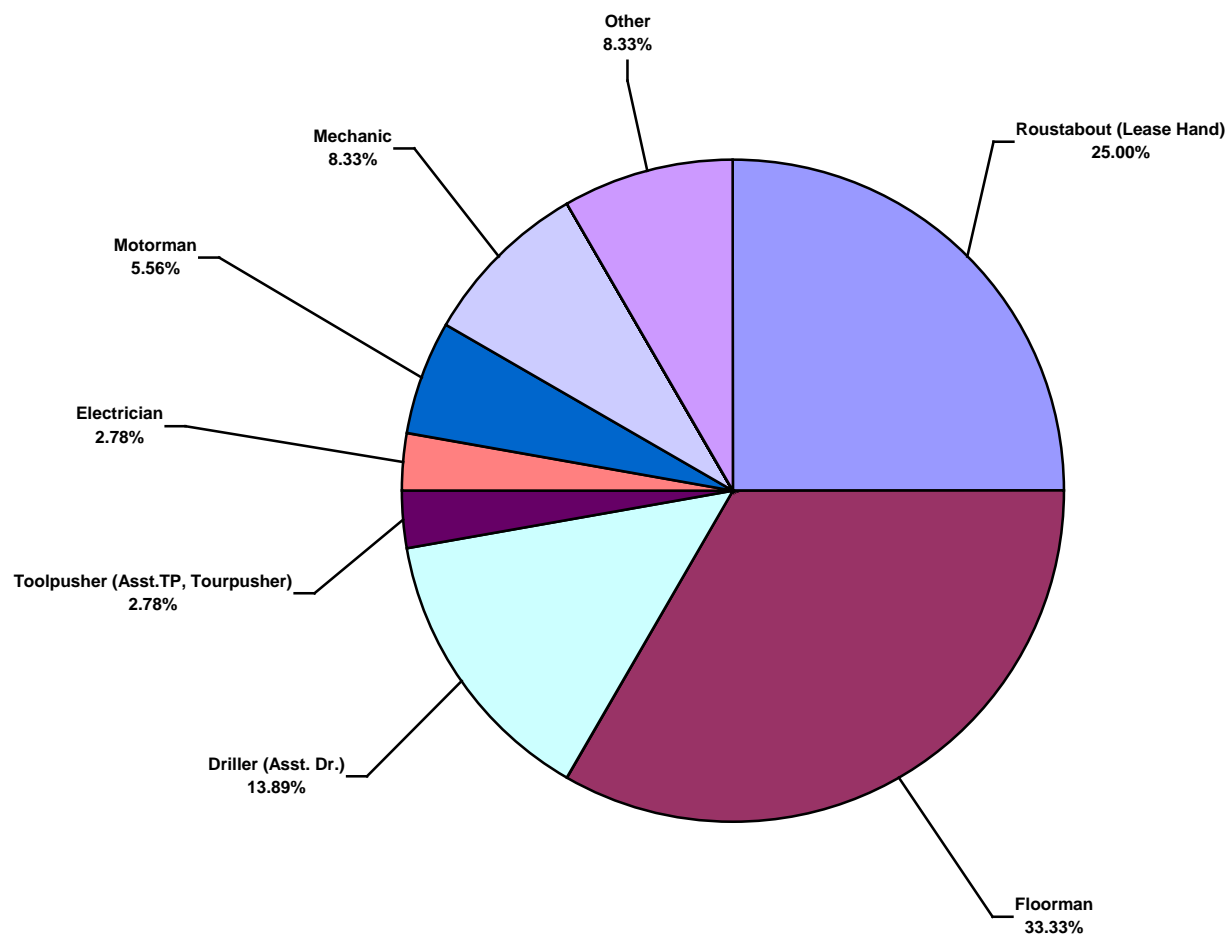
Based on 36 Incidents



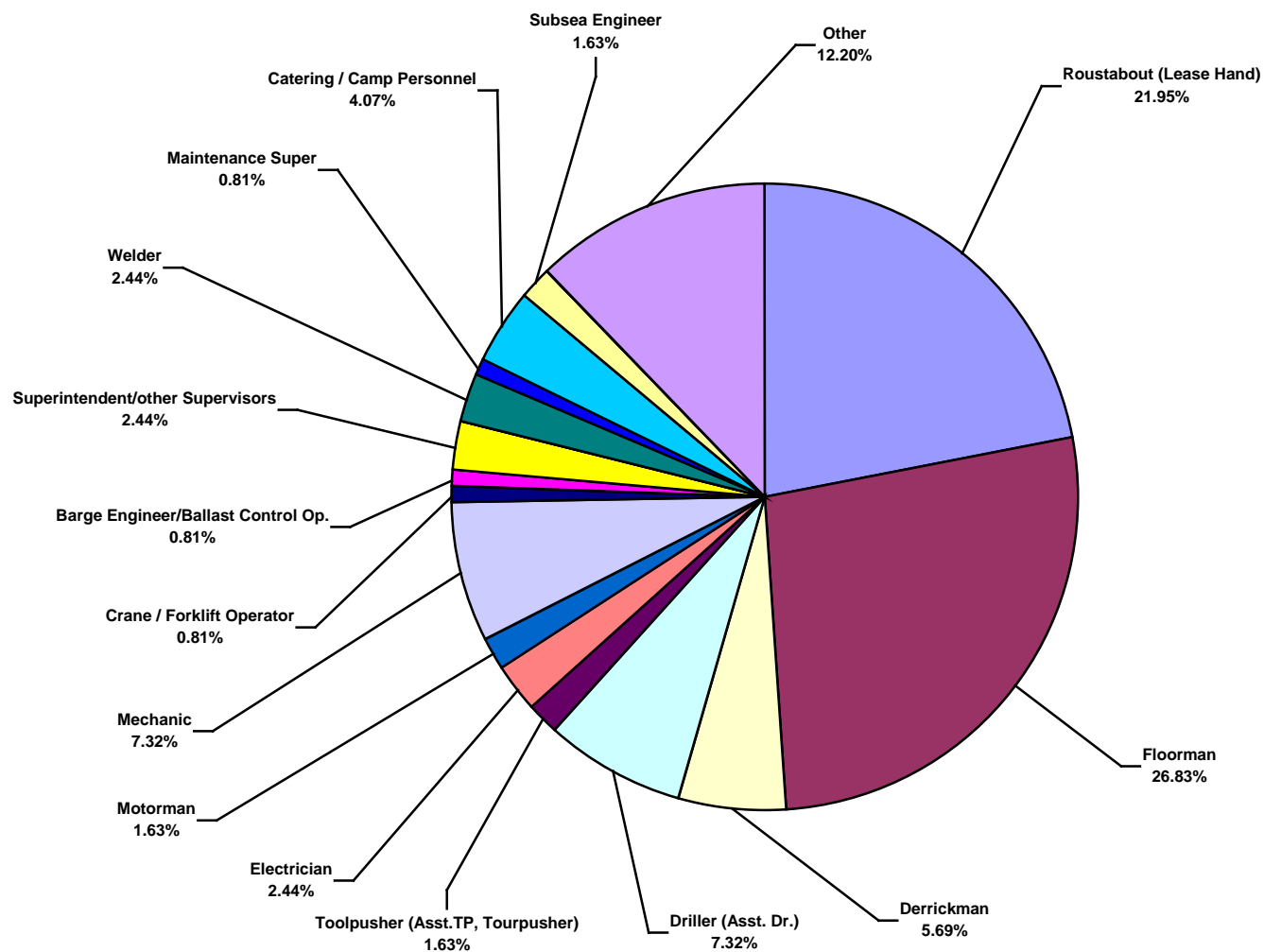
Asia Pacific Water Total Recordable Incidents by Month (Chart 2)  
Based on 123 Incidents



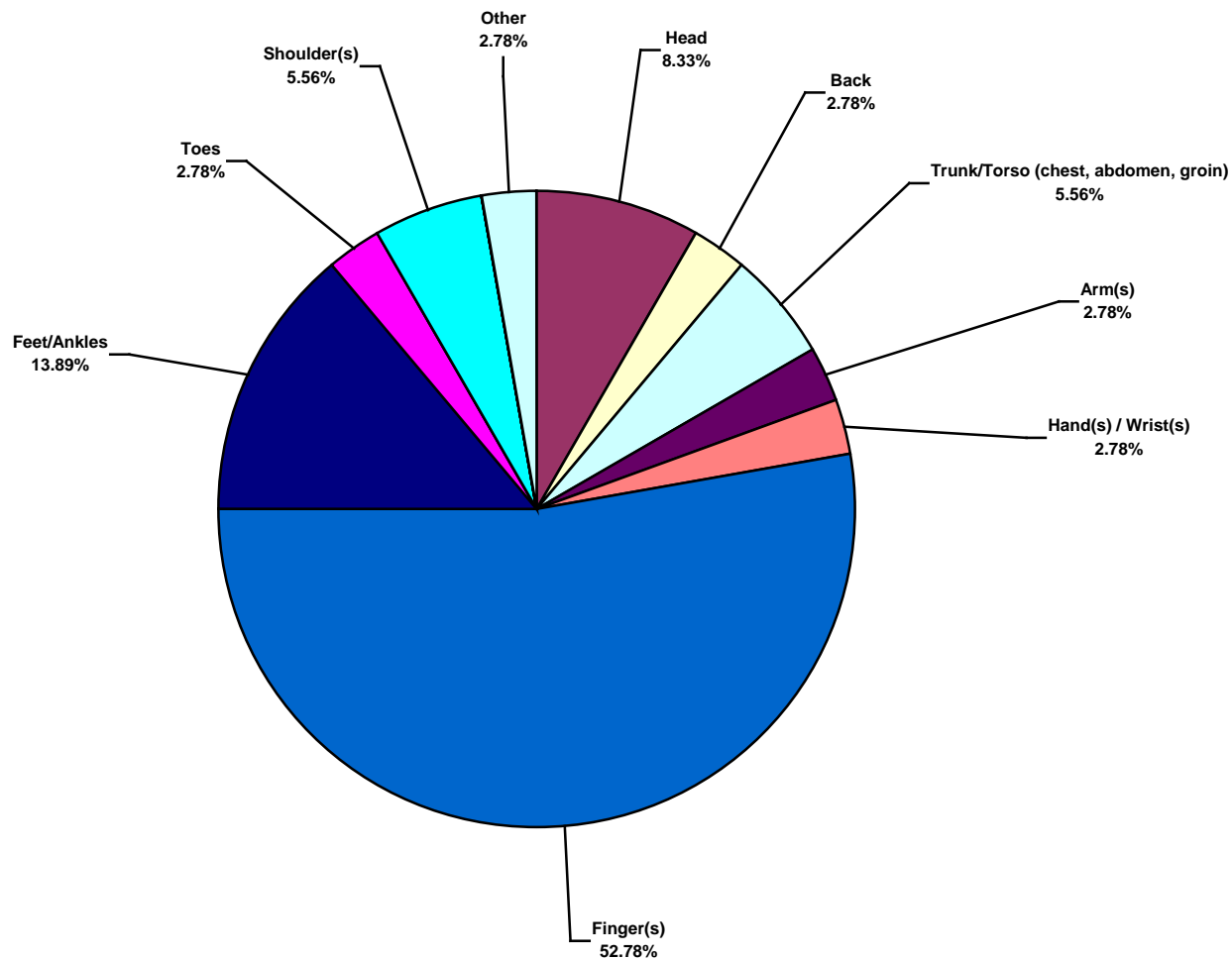
Asia Pacific Water Total Lost Time Incidents by Occupation (Chart 3)  
Based on 36 Incidents



**Asia Pacific Water Total Recordable Incidents by Occupation (Chart 4)**  
Based on 123 Incidents

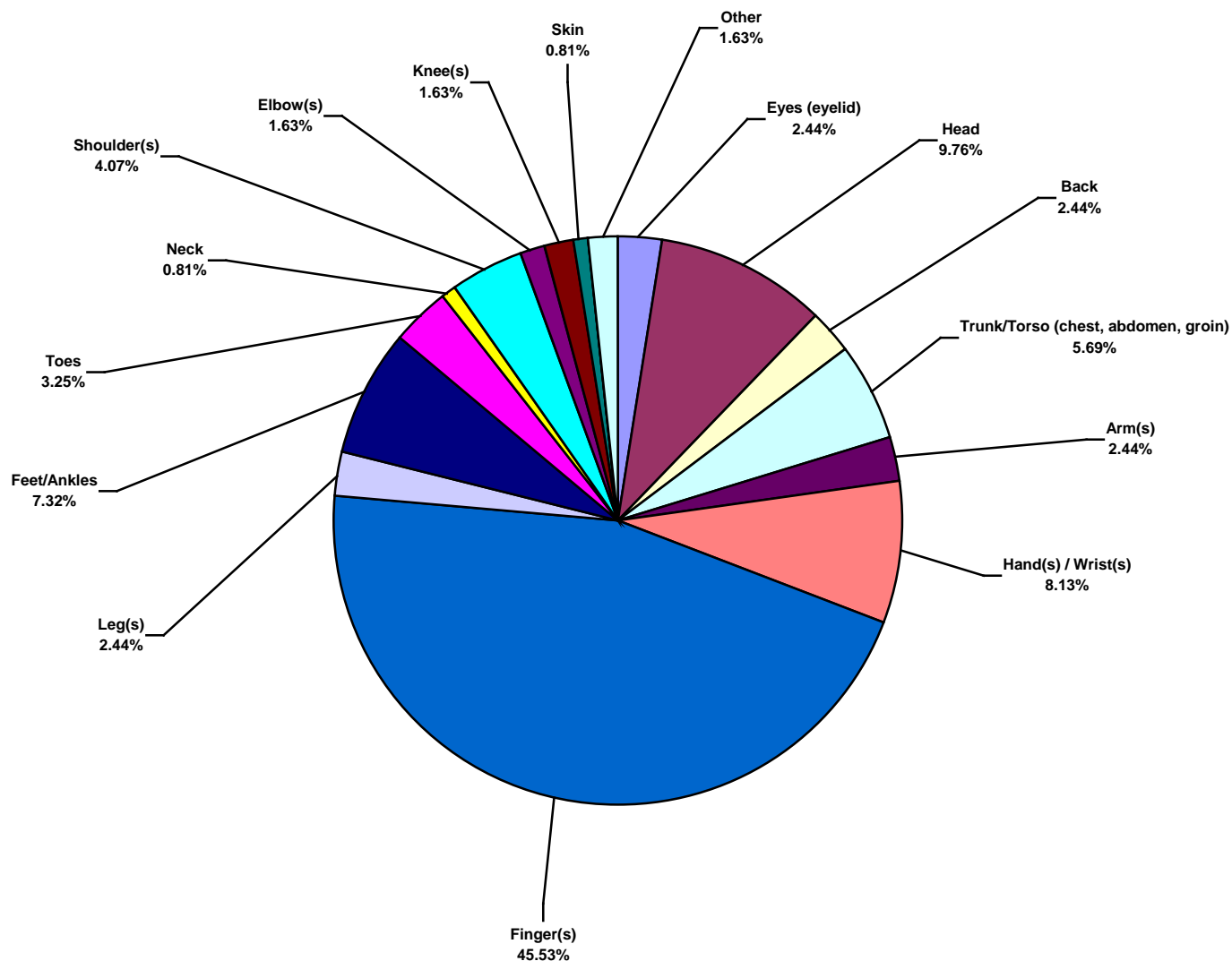


**Asia Pacific Water Total Lost Time Incidents by Body Part (Chart 5)**  
Based on 36 Incidents

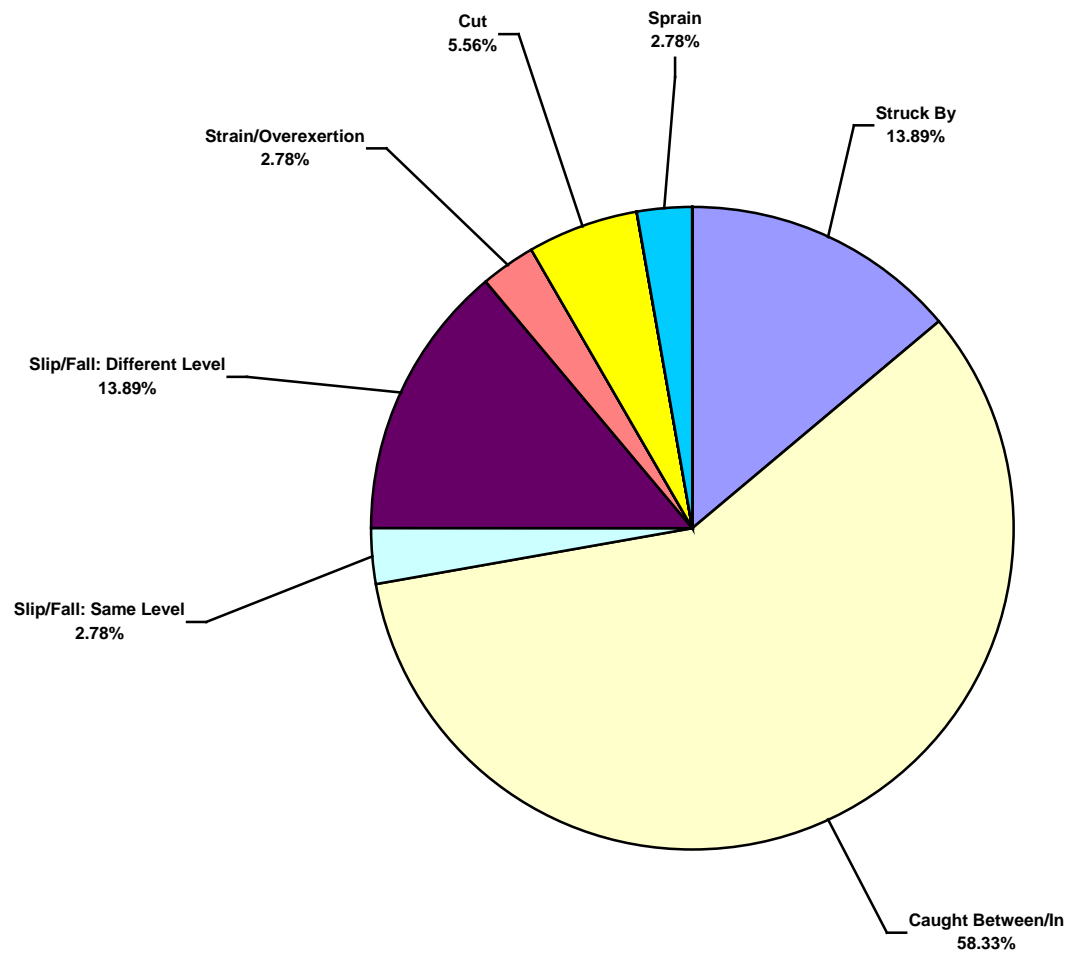




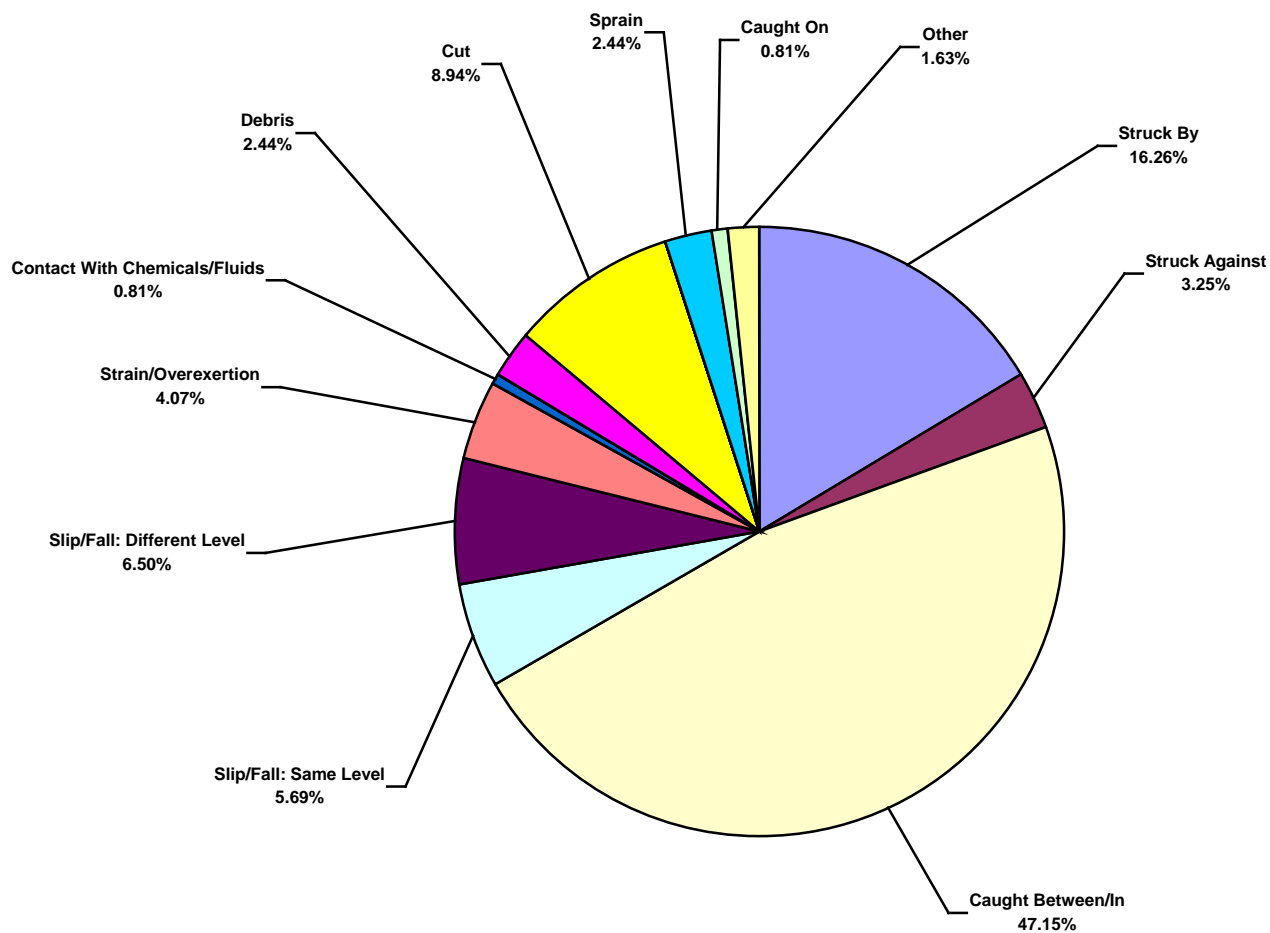
**Asia Pacific Water Total Recordable Incidents by Body Part (Chart 6)**  
Based on 123 Incidents



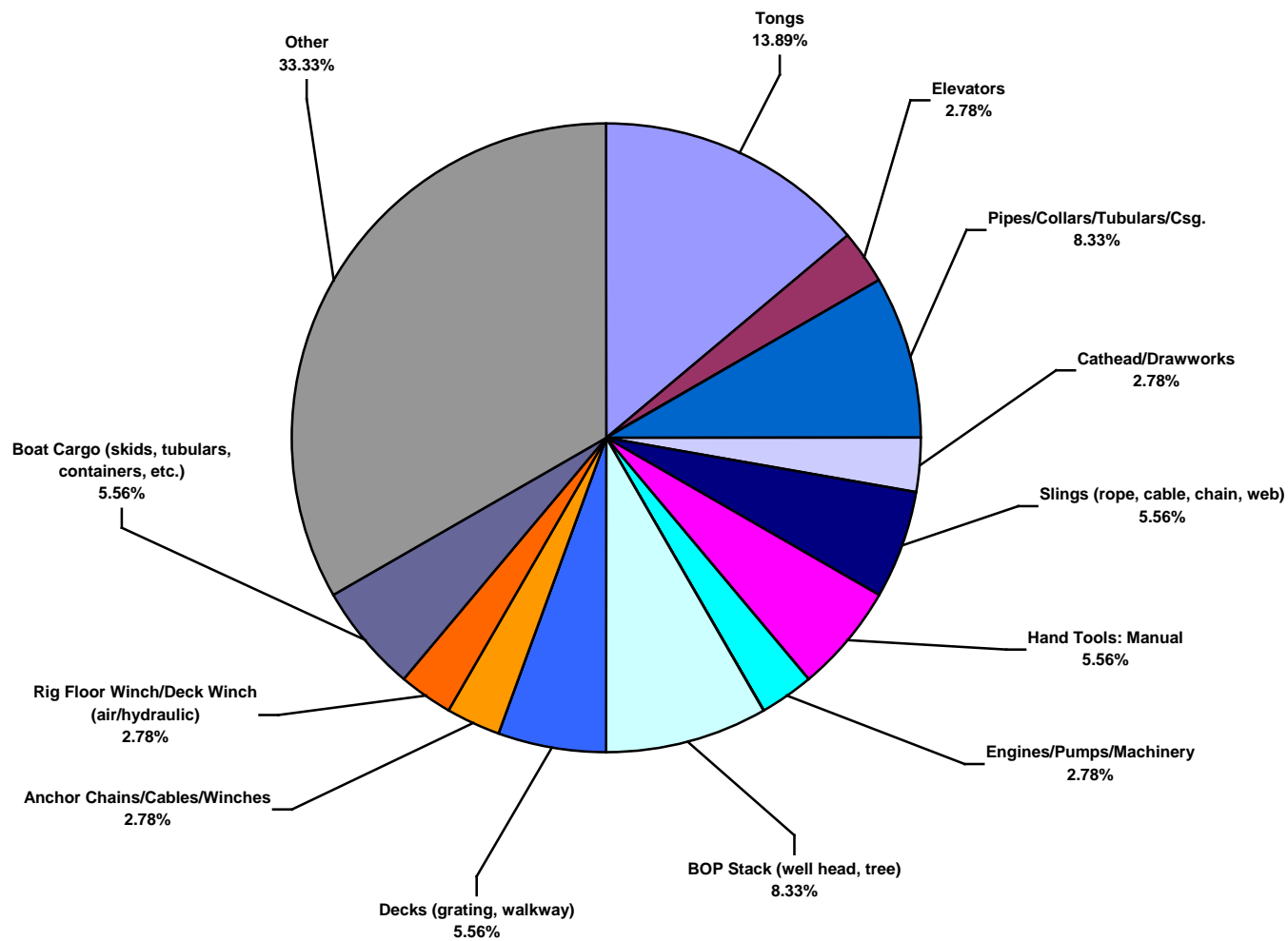
Asia Pacific Water Total Lost Time Incidents by Incident Type (Chart 7)  
Based on 36 Incidents



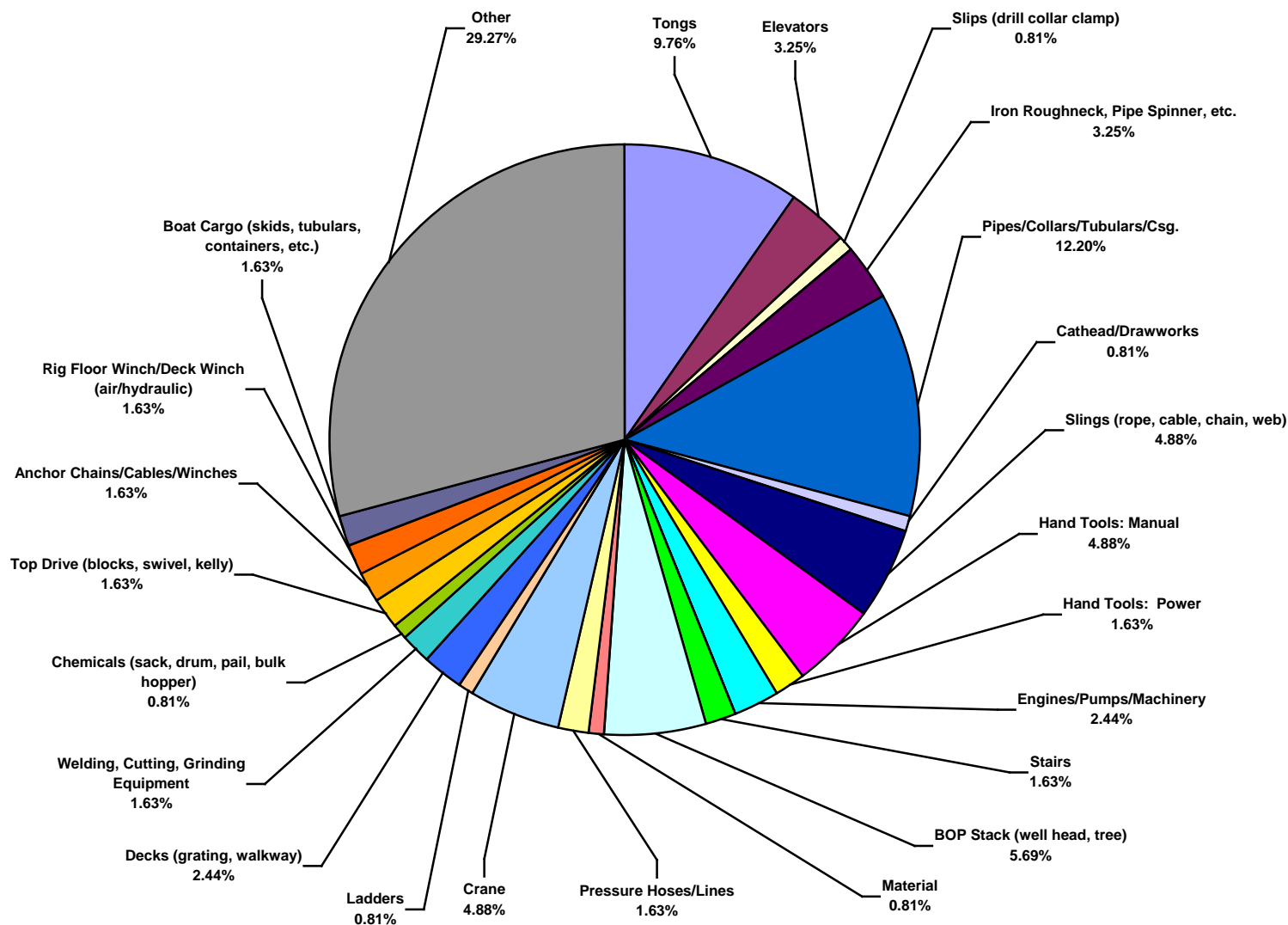
**Asia Pacific Water Total Recordable Incidents by Incident Type (Chart 8)**  
Based on 123 Incidents



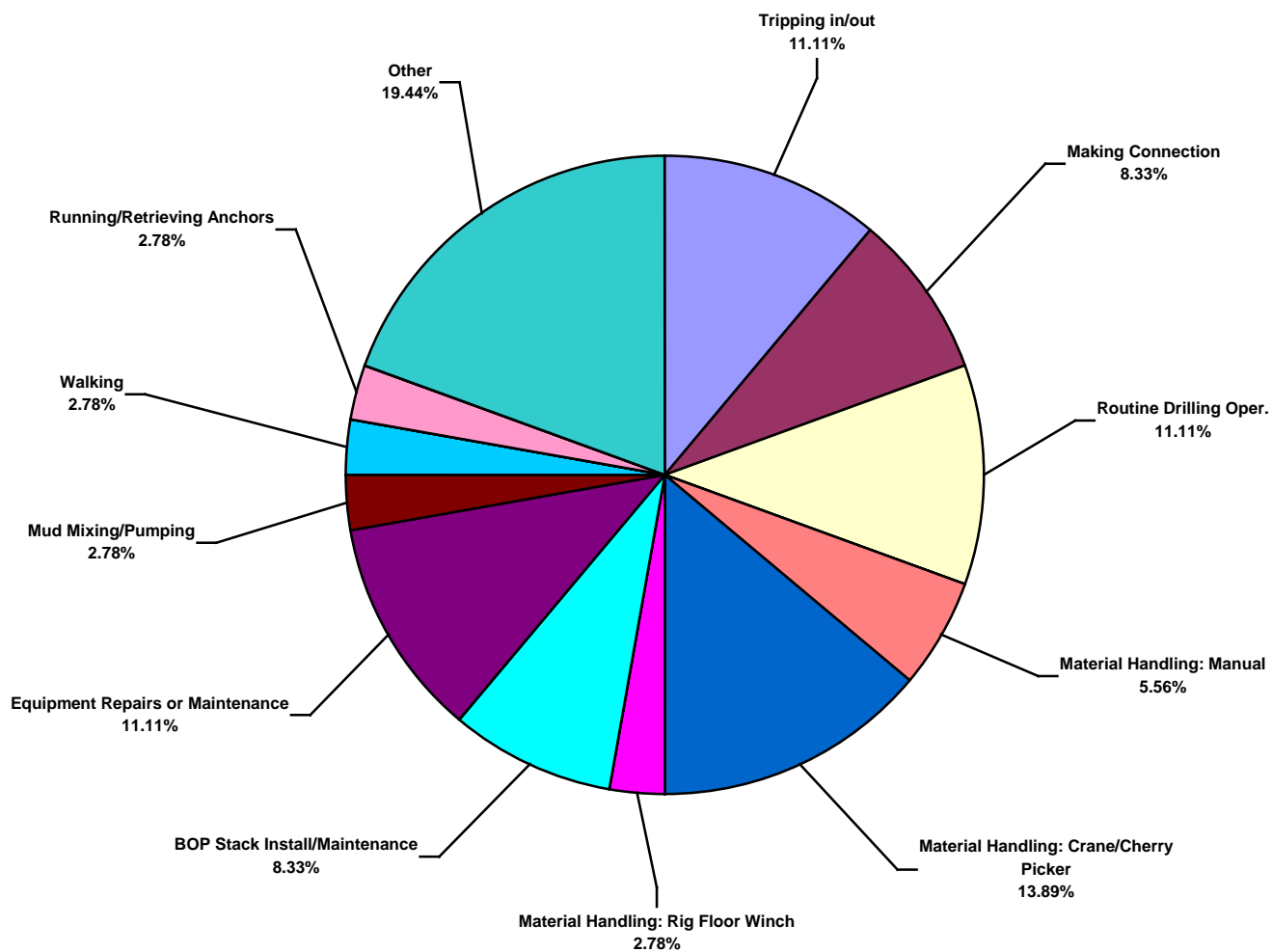
**Asia Pacific Water Total Lost Time Incidents by Equipment (Chart 9)**  
Based on 36 Incidents



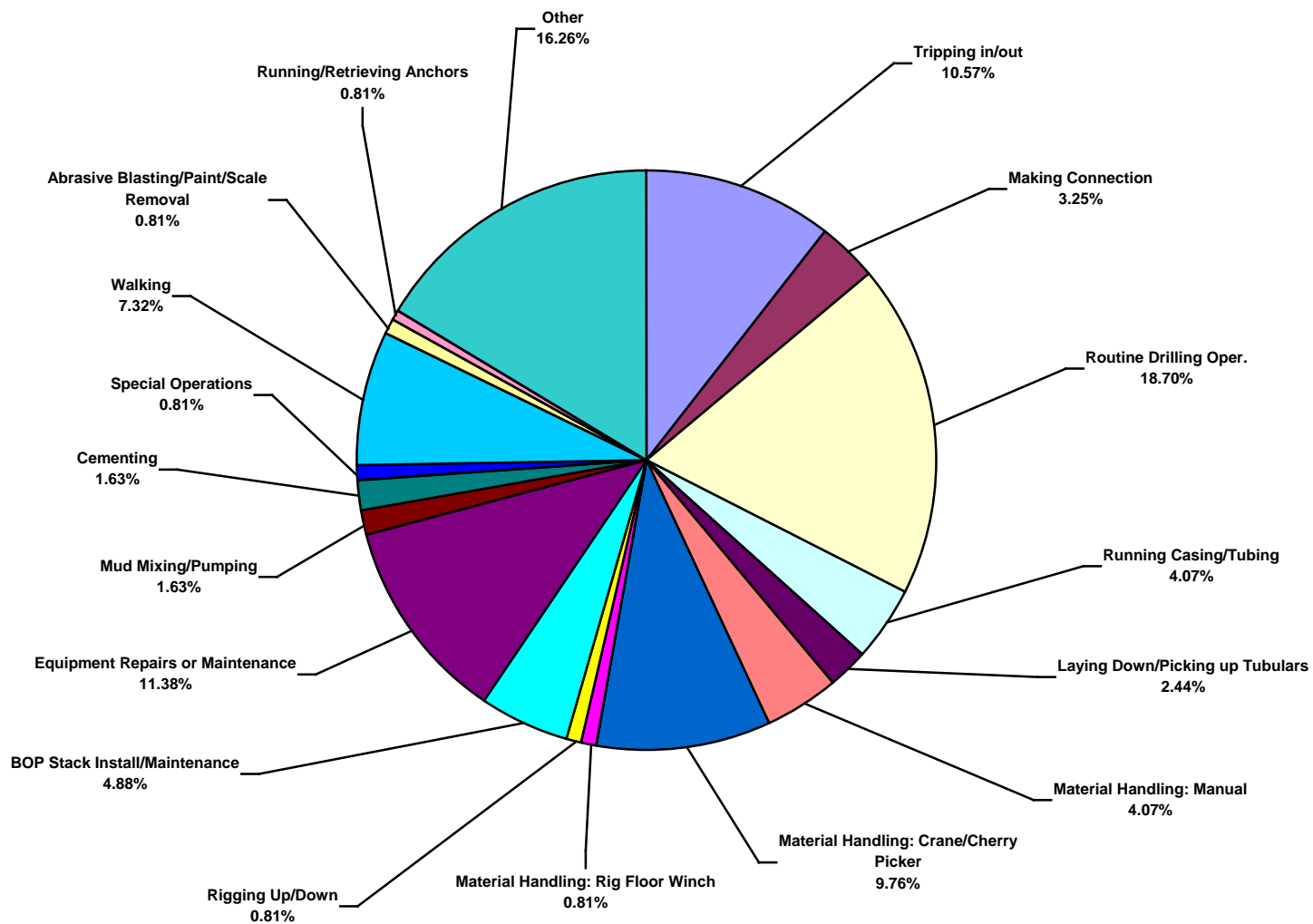
**Asia Pacific Water Total Recordable Incidents by Equipment (Chart 10)**  
Based on 123 Incidents



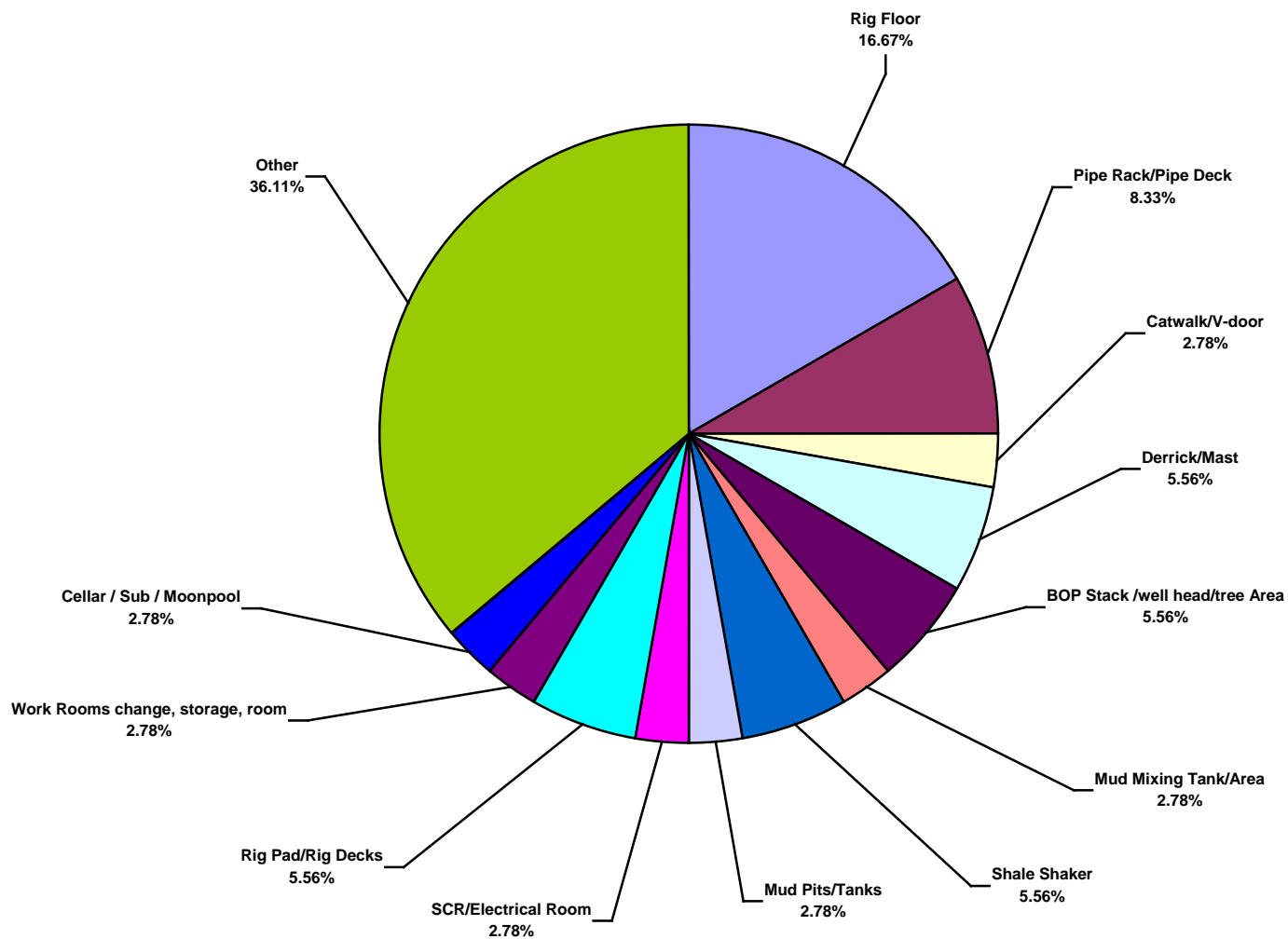
**Asia Pacific Water Total Lost Time Incidents by Operation (Chart 11)**  
Based on 36 Incidents



**Asia Pacific Water Total Recordable Incidents by Operation (Chart 12)**  
Based on 123 Incidents

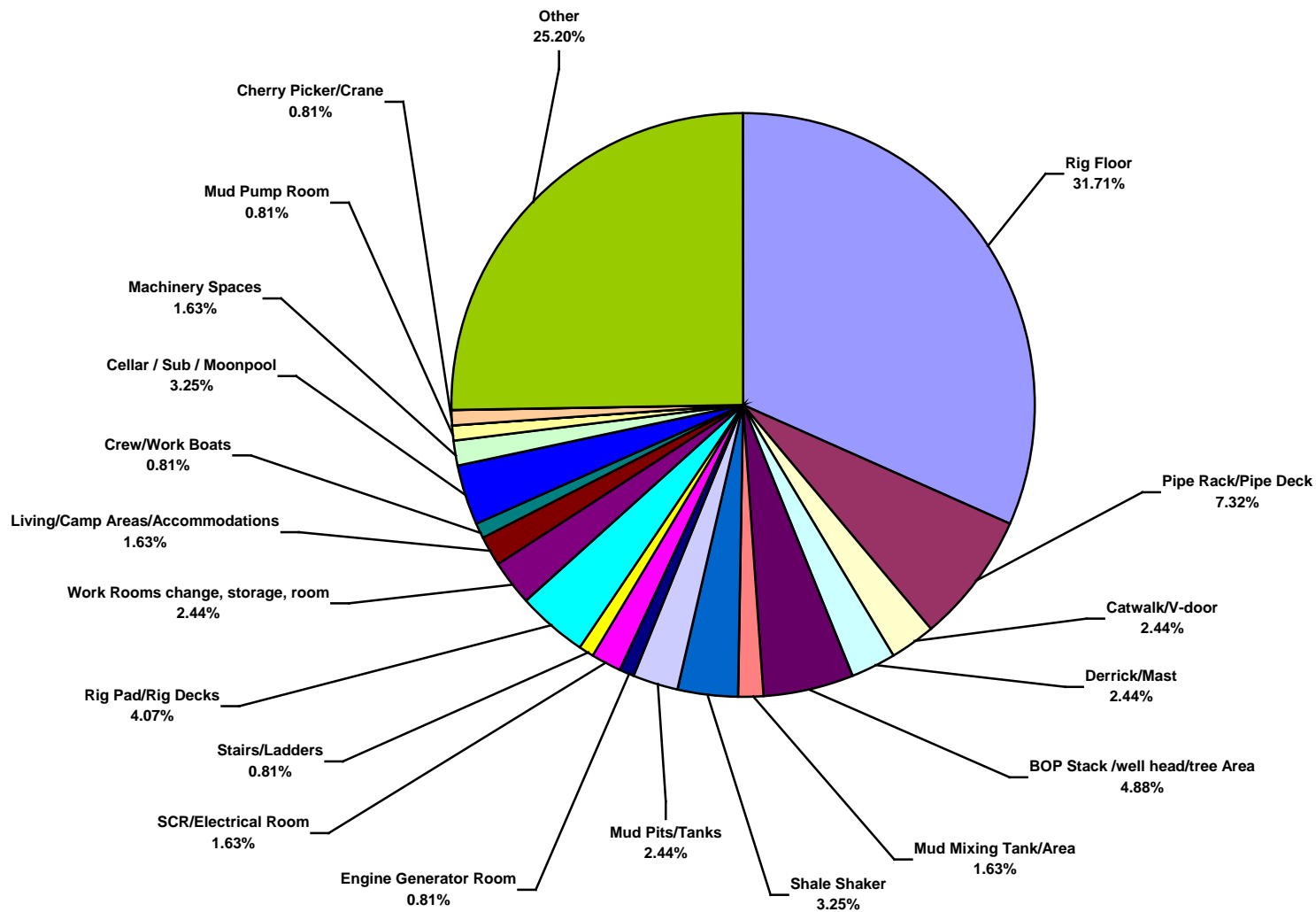


**Asia Pacific Water Total Lost Time Incidents by Location (Chart 13)**  
Based on 36 Incidents

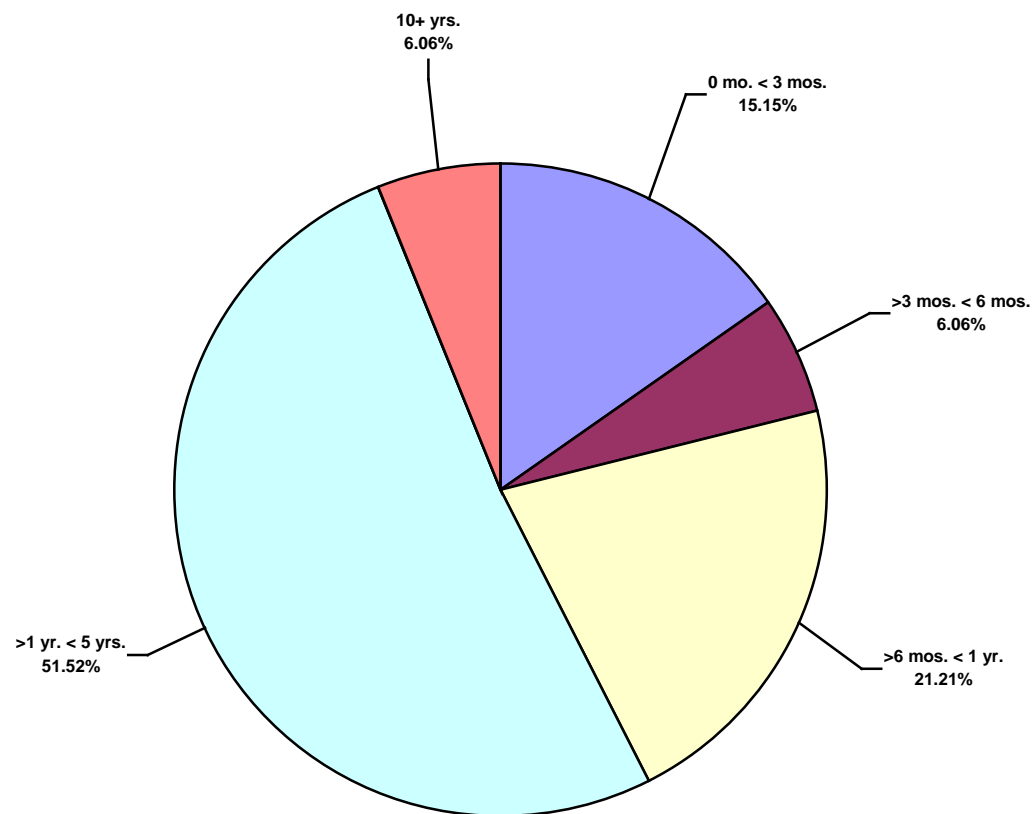




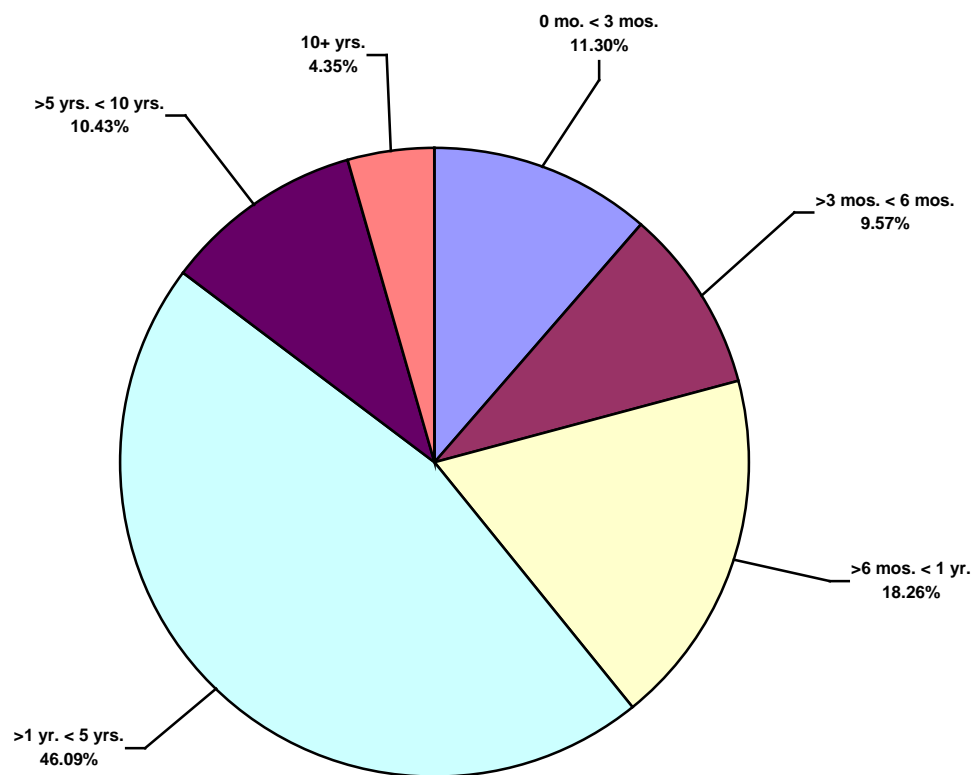
**Asia Pacific Water Total Recordable Incidents by Location (Chart 14)**  
Based on 123 Incidents



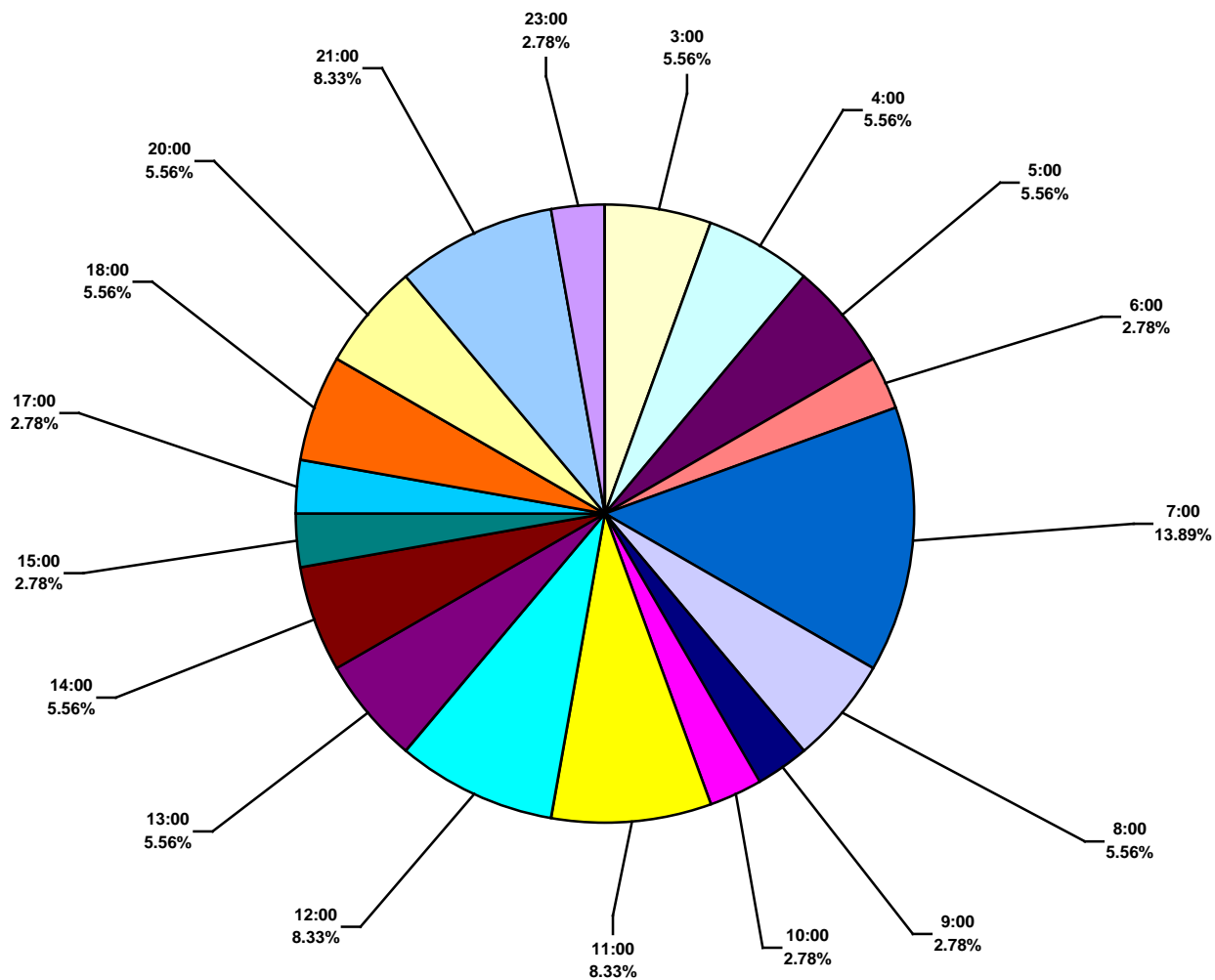
Asia Pacific Water Total Lost Time Incidents by Time in Service (Chart 15)  
Based on 33 Incidents



Asia Pacific Water Total Recordable Incidents by Time in Service (Chart 16)  
Based on 115 Incidents



**Asia Pacific Water Total Lost Time Incidents by Time of Day (Chart 17)**  
Based on 36 Incidents



**Asia Pacific Water Total Recordable Incidents by Time of Day (Chart 18)**  
Based on 122 Incidents

