



# Safety Alert

From the International Association of Drilling Contractors

## ALERT 06 – 24

### SHORT FALL RESULTS IN A FATALITY

#### WHAT HAPPENED:

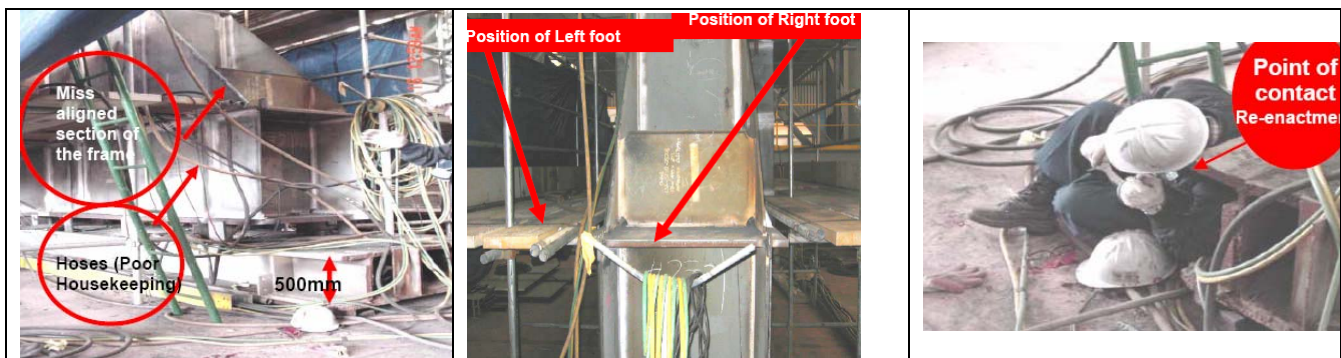
Although this incident did not happen in the drilling industry it could easily have been. A fitter was working on a load-out support frame (LSF) to correct miss-aligned section of the frame before mounting a steel plate. He fell from a height of 1.8m while attempting to move towards the ladder attached to the scaffold. He hit the left side of his head (behind his left ear) on the corner of a steel working table below the LSF. Shortly before the fall, the fitter was positioned with his left foot on the scaffold and the right foot on the LSF. In the process of moving towards the ladder, he tripped on an object or slipped and then fell. No eyewitness was present to confirm the actual cause of the incident. The fitter sustained a fractured skull (base) and laceration, which caused some bleeding, and immediate swelling to the back of the head. He was immediately admitted to the hospital and was placed on life support; but he passed away.

#### WHAT CAUSED IT:

- Primary fall protection devices were not considered for heights below 1.8m. The company's risk evaluation procedure does not consider heights less than 2.0m a hazard.
- The deceased did not recognize the potential hazards associated with his position.
- Good housekeeping around the worksite was not enforced. Hoses were not neatly stowed at the work site thereby constituting potential trip hazards.
- Work scope was changed when the deceased needed to work outside the scaffolding.
- JSA was not revised to include hazard of working outside primary fall protection.
- Job and Safety supervision was less than adequate.

#### CORRECTIVE ACTIONS: To address this incident, this company instructed the workers in the following:

- Working at elevations should be properly assessed for potential hazard irrespective of the height from grade.
- Always ensure appropriate use of primary fall protection.
- Always ensure good housekeeping at and around work areas.
- Always revise risk assessment and/or JSA whenever there is a change in work scope or condition.
- Always ensure the presence of adequate job and safety supervision at all worksites. Always conduct frequent audits to monitor compliance with JSA and housekeeping requirements



**The Corrective Actions stated in this alert are one company's attempts to address the incident, and do not necessarily reflect the position of IADC or the IADC HSE Committee.**

This material is presented for information purposes only. Managers & Supervisors should evaluate this information to determine if it can be applied to their own situations and practices

Copyright © 2005 International Association of Drilling Contractors All rights reserved.

Issued July 2006