



IADC ISP PROGRAM

2012



Summary of Occupational Incidents (US Land Totals)

Issued 30 May 2013



Table of Contents

(Table of Contents is Hyperlinked, Just click on Topic & go)

IADC 2012 US LAND TOTALS (TABLE 1).....	1
<i>US Land Total Incidence Rates vs Man-hours (Figure 1)</i>	1
IADC 2012 US LAND CHARTS	2
<i>US Land Total Lost Time Incidents by Month (Chart 1)</i>	2
<i>US Land Total Recordable Incidents by Month (Chart 2)</i>	3
<i>US Land Total Lost Time Incidents by Occupation (Chart 3)</i>	4
<i>US Land Total Recordable Incidents by Occupation (Chart 4)</i>	5
<i>US Land Total Lost Time Incidents by Body Part (Chart 5)</i>	6
<i>US Land Total Recordable Incidents by Body Part (Chart 6)</i>	7
<i>US Land Total Lost Time Incidents by Incident Type (Chart 7)</i>	8
<i>US Land Total Recordable Incidents by Incident Type (Chart 8)</i>	9
<i>US Land Total Lost Time Incidents by Equipment (Chart 9)</i>	10
<i>US Land Total Recordable Incidents by Equipment (Chart 10)</i>	11
<i>US Land Total Lost Time Incidents by Operation (Chart 11)</i>	12
<i>US Land Total Recordable Incidents by Operation (Chart 12)</i>	13
<i>US Land Total Lost Time Incidents by Location (Chart 13)</i>	14
<i>US Land Total Recordable Incidents by Location (Chart 14)</i>	15
<i>US Land Total Lost Time Incidents by Time in Service (Chart 15)</i>	16
<i>US Land Total Recordable Incidents by Time in Service (Chart 16)</i>	17
<i>US Land Total Lost Time Incidents by Time of Day (Chart 17)</i>	18
<i>US Land Total Recordable Incidents by Time of Day (Chart 18)</i>	19



IADC 2012 US Land Totals (Table 1)

	<u>Total</u>
Total Man-hours	102,084,166
Total Medical Treatment Incidents	417
Total Restricted Work Incidents	331
Total Lost Time Incidents	254
Total Fatalities	6
Total Recordables	1,008
MTO Incidence Rate	0.82
RWC Incidence Rate	0.65
LTI Incidence Rate	0.51
LTI Frequency Rate	2.55
DART Incidence Rate	1.16
DART Frequency Rate	5.79
Recordable Incidence Rate	1.97
Recordable Frequency Rate	9.87

Companies Reporting: Land – 41

Medical Treatment Incidence Rate = MTOs X 200,000

Restricted Work Incidence Rate = RWCs X 200,000

Lost Time Incidence Rate = LTIs + FTLs X 200,000

DART Incidence Rate = LTIs + RWC X 200,000

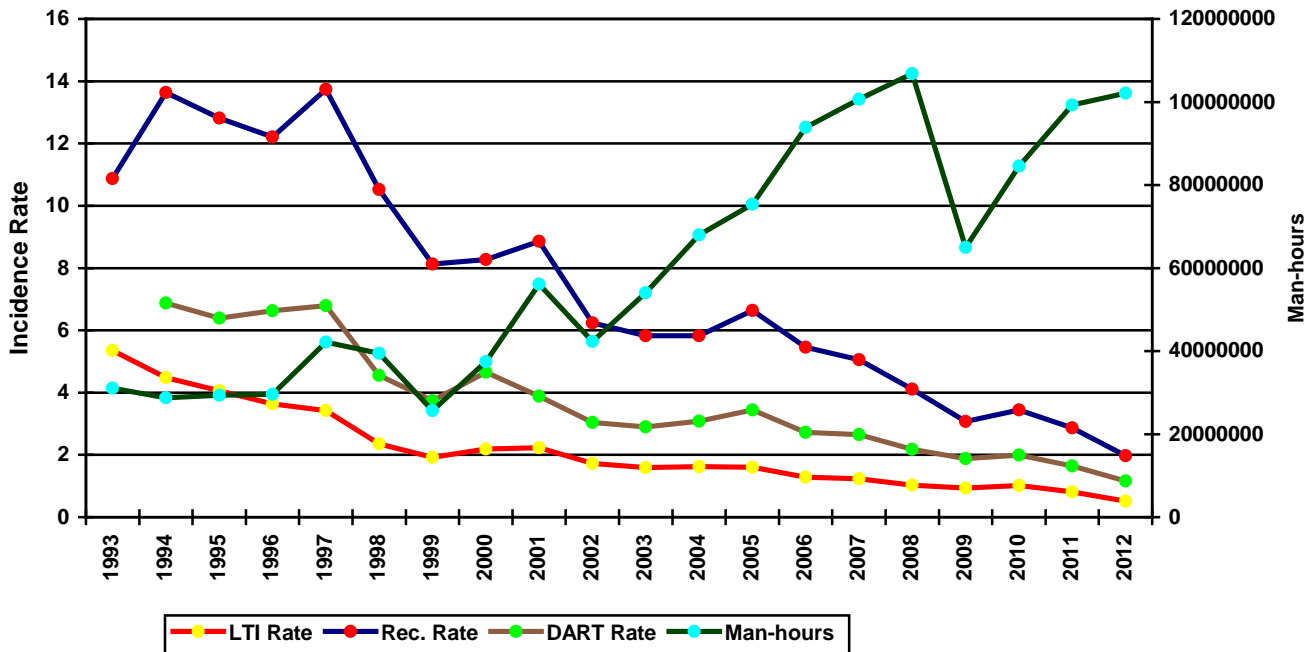
Recordable Incidence Rate = RCRD X 200,000

Lost Time Frequency Rate = LTIs +FTLs X 1,000,000

DART Frequency Rate = LTIs + RWC X 1,000,000

Recordable Frequency Rate = RCRD X 1,000,000

US Land Total Incidence Rates vs Man-hours (Figure 1)

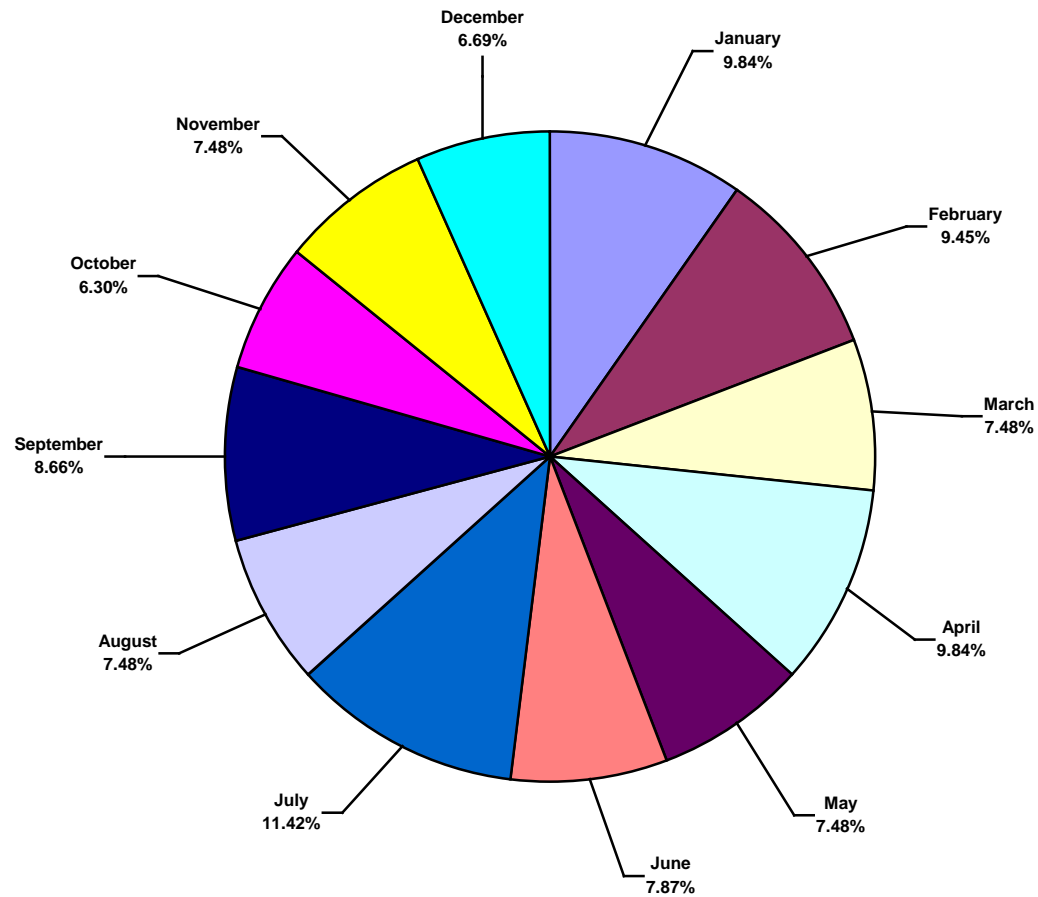




IADC 2012 US Land Charts

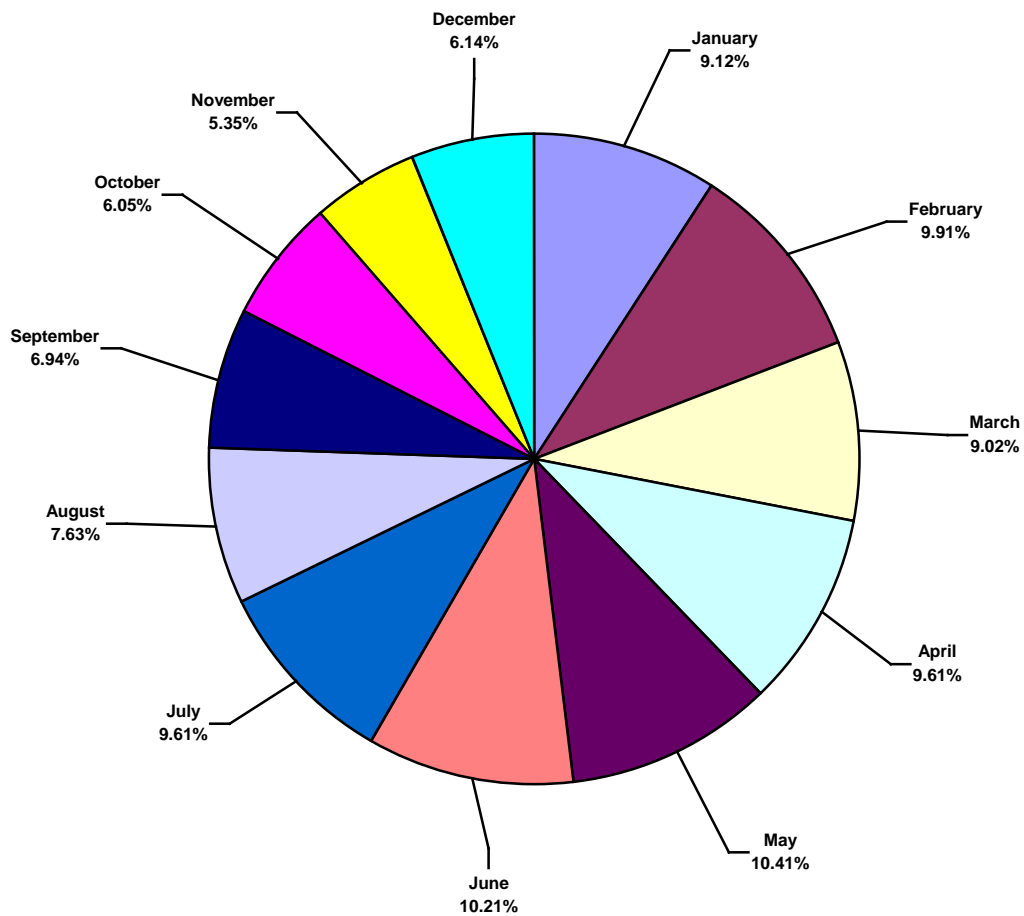
US Land Total Lost Time Incidents by Month (Chart 1)

Based on 254 Incidents



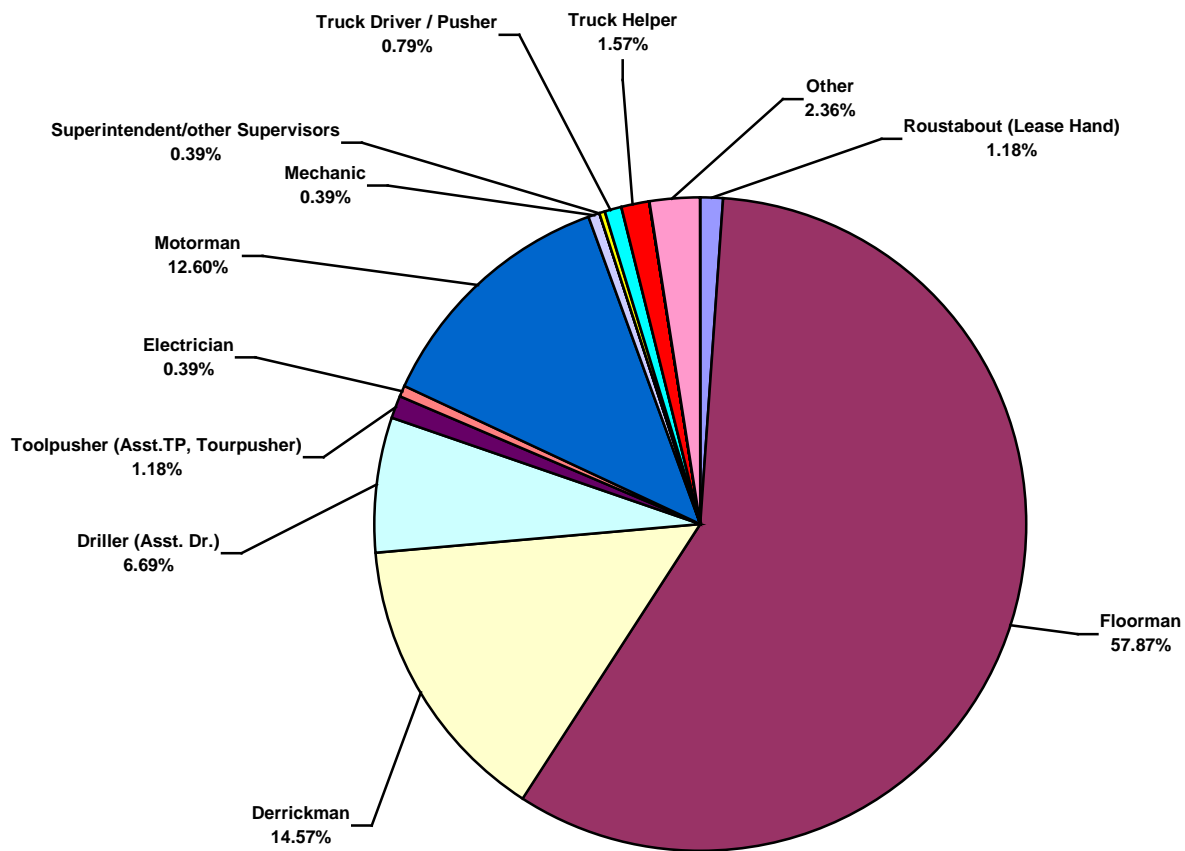


US Land Total Recordable Incidents by Month (Chart 2)
Based on 1009 Incidents



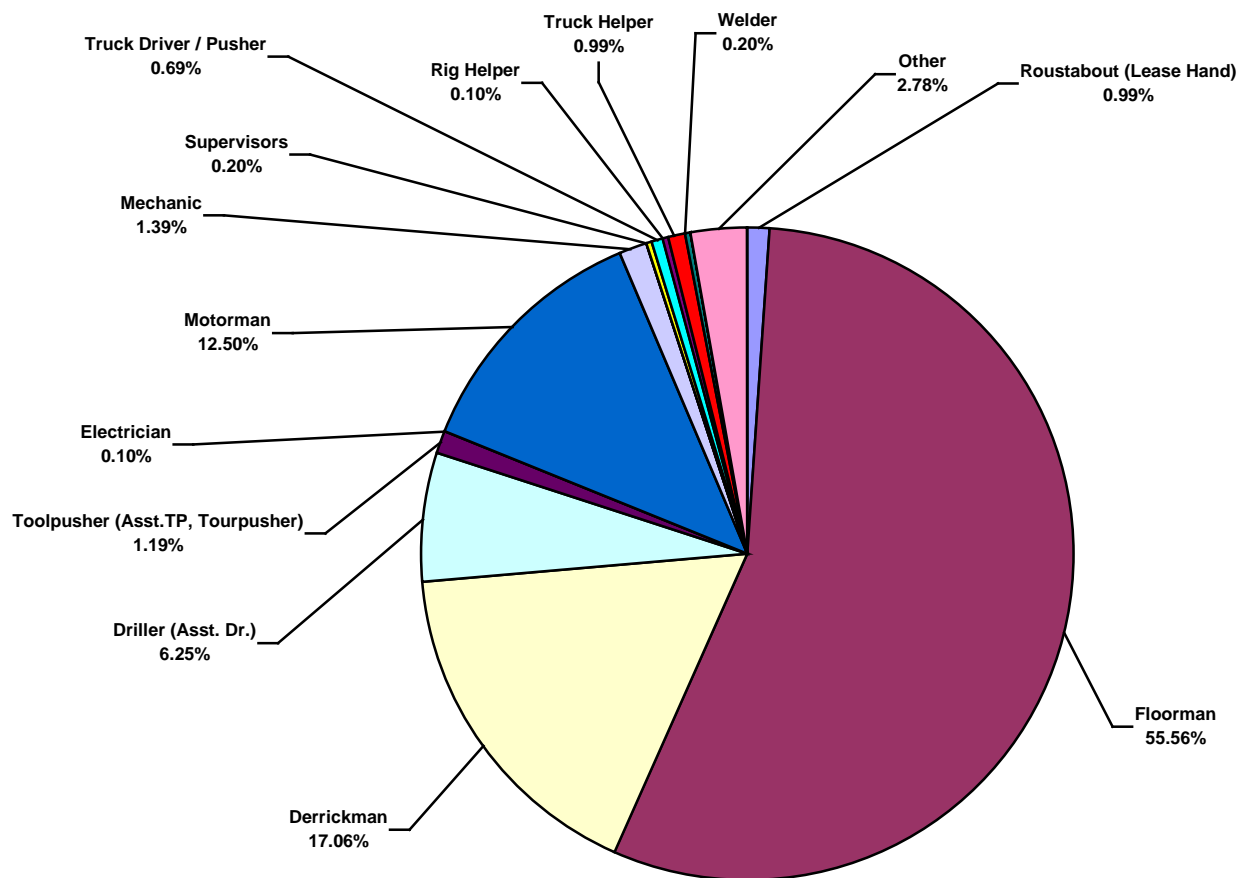


US Land Total Lost Time Incidents by Occupation (Chart 3)
Based on 254 Incidents



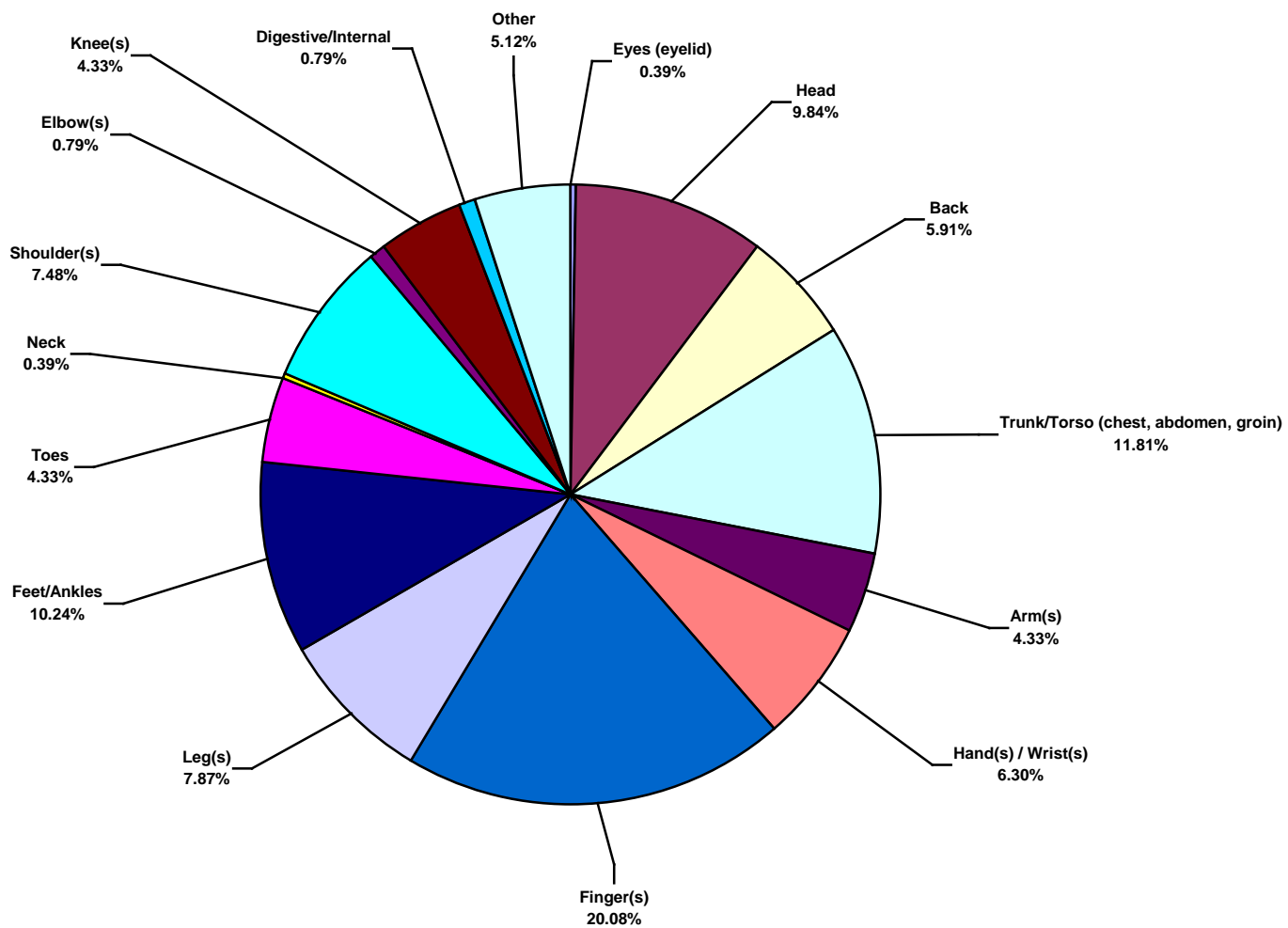


US Land Total Recordable Incidents by Occupation (Chart 4)
Based on 1008 Incidents



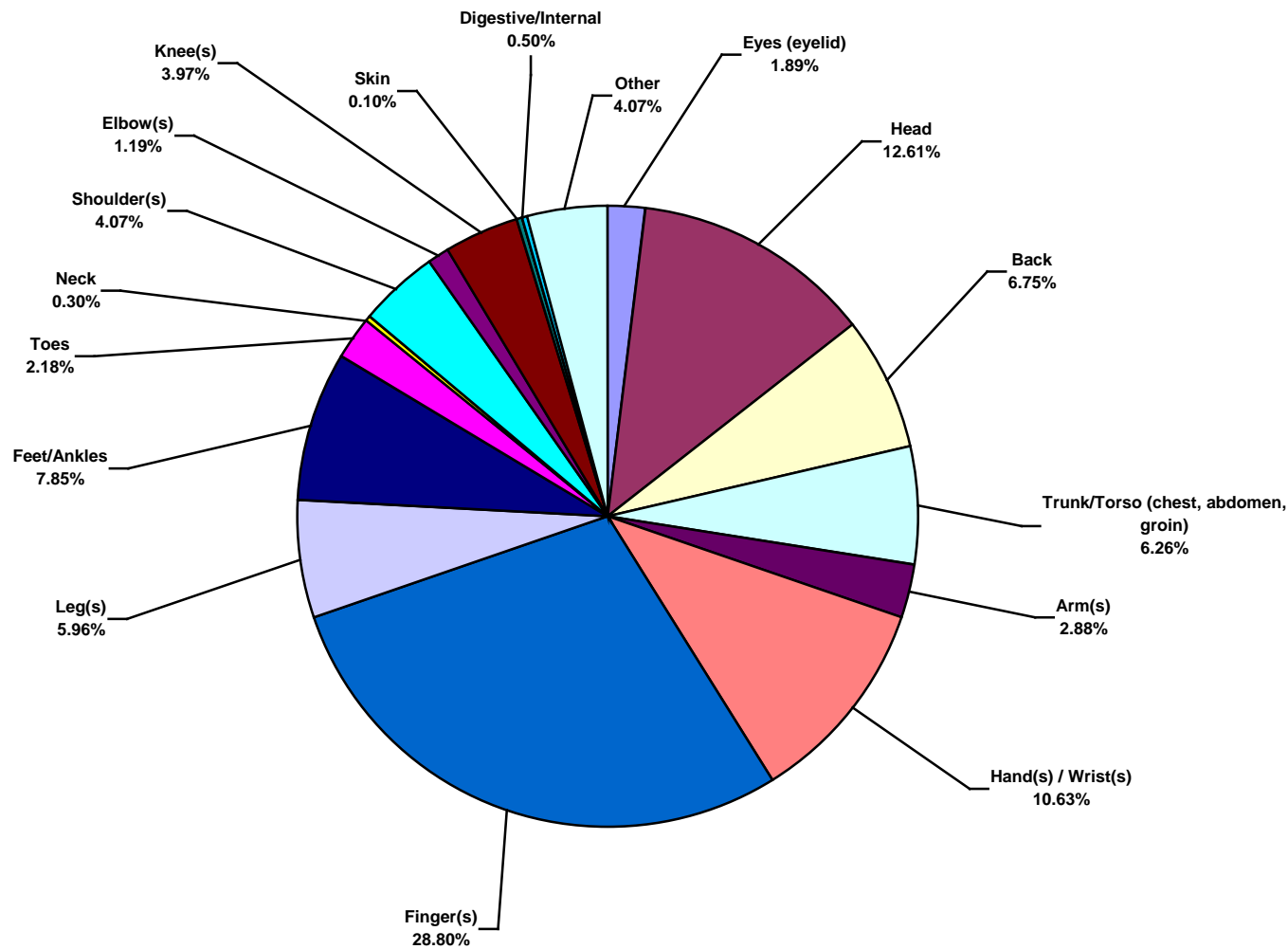


US Land Total Lost Time Incidents by Body Part (Chart 5)
Based on 254 Incidents



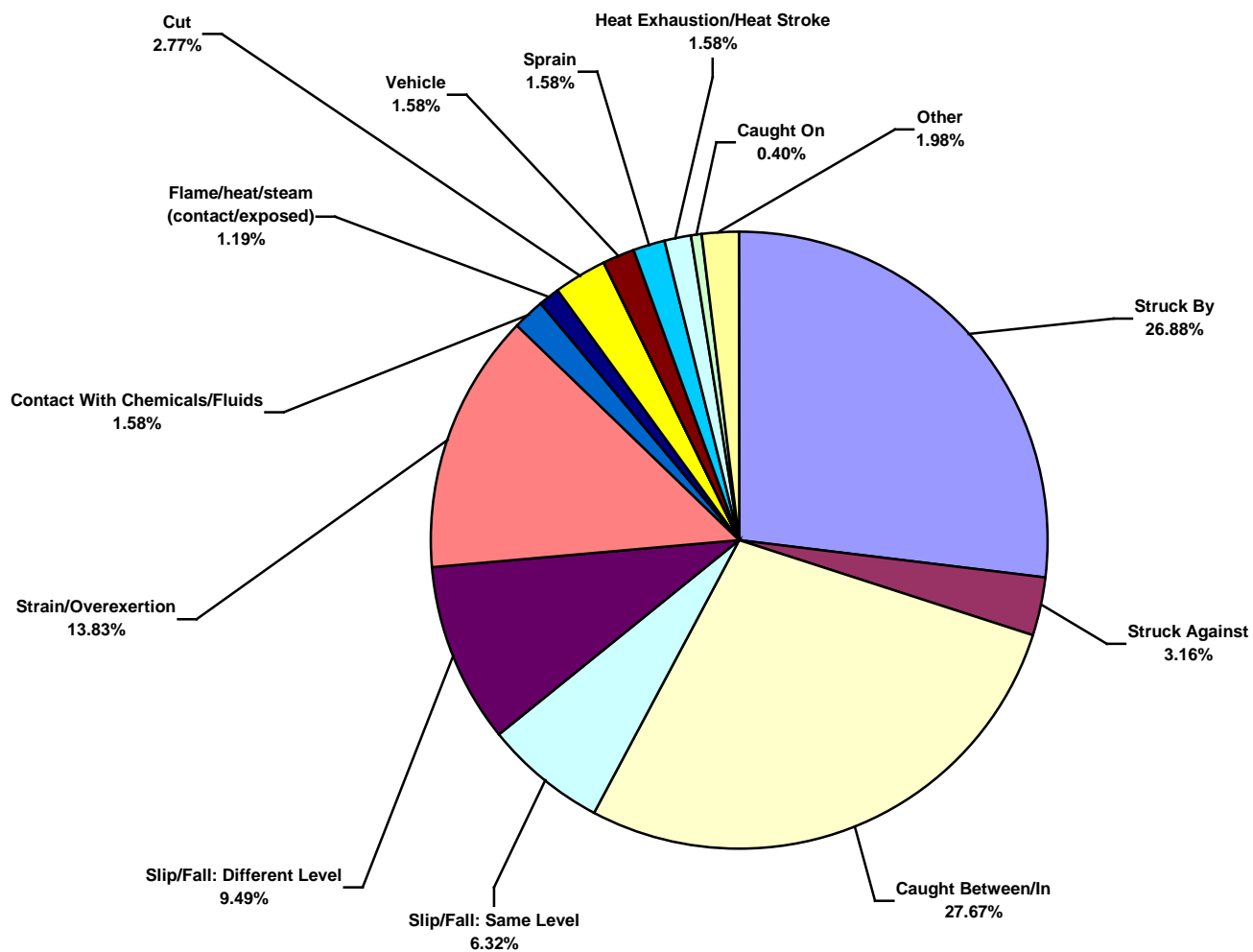


US Land Total Recordable Incidents by Body Part (Chart 6)
Based on 1007 Incidents



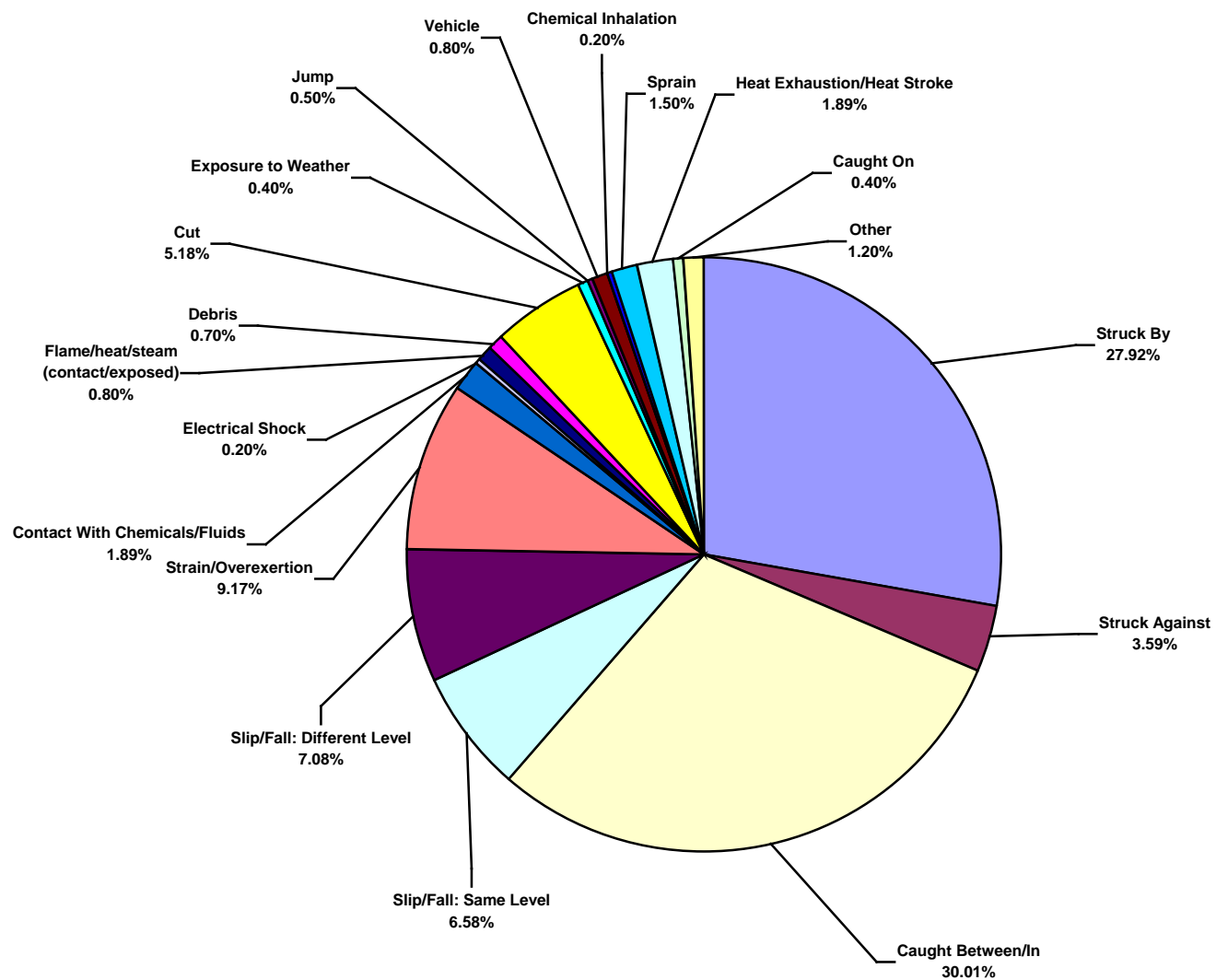


US Land Total Lost Time Incidents by Incident Type (Chart 7)
Based on 253 Incidents



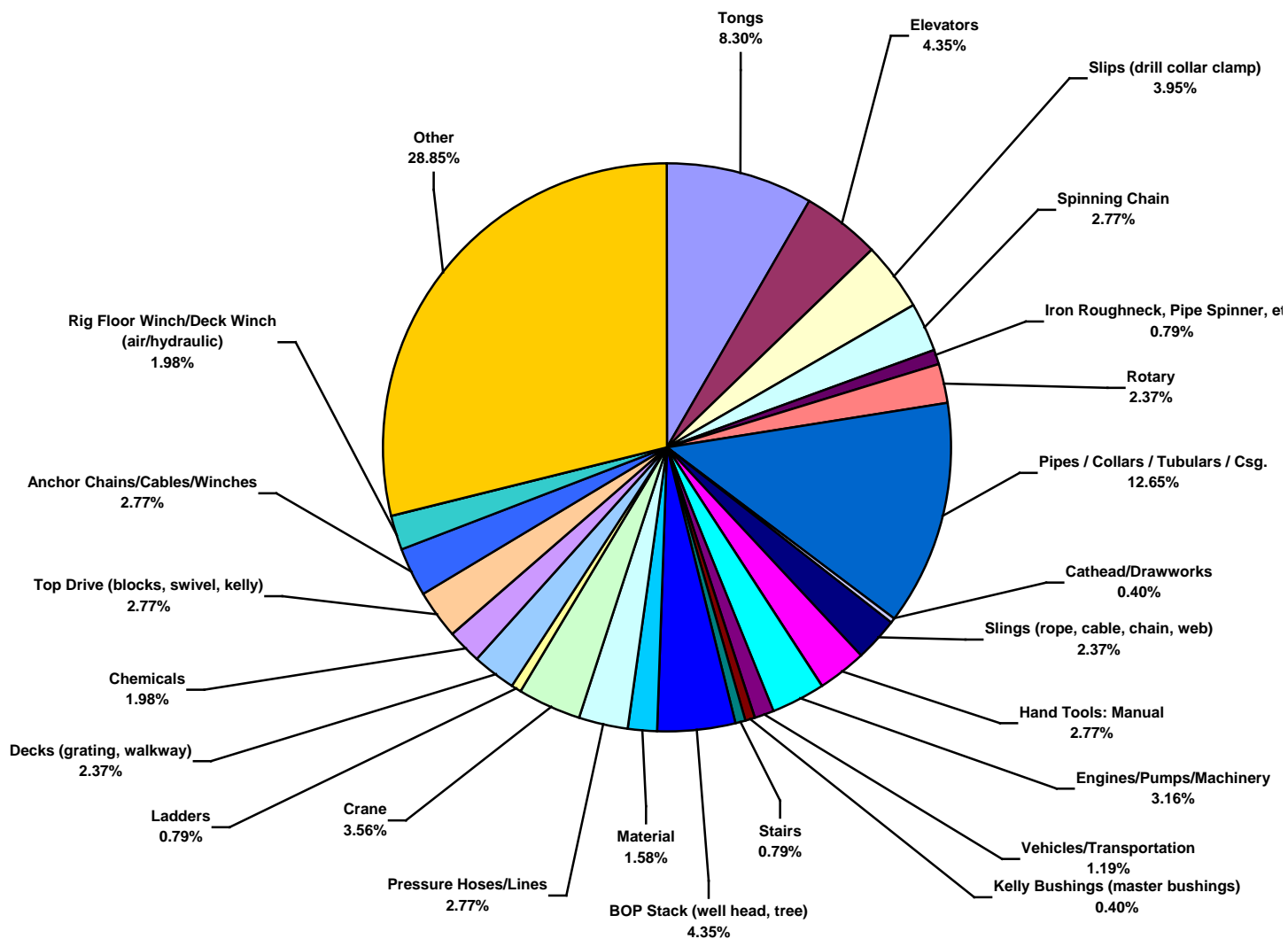


US Land Total Recordable Incidents by Incident Type (Chart 8)
Based on 1003 Incidents



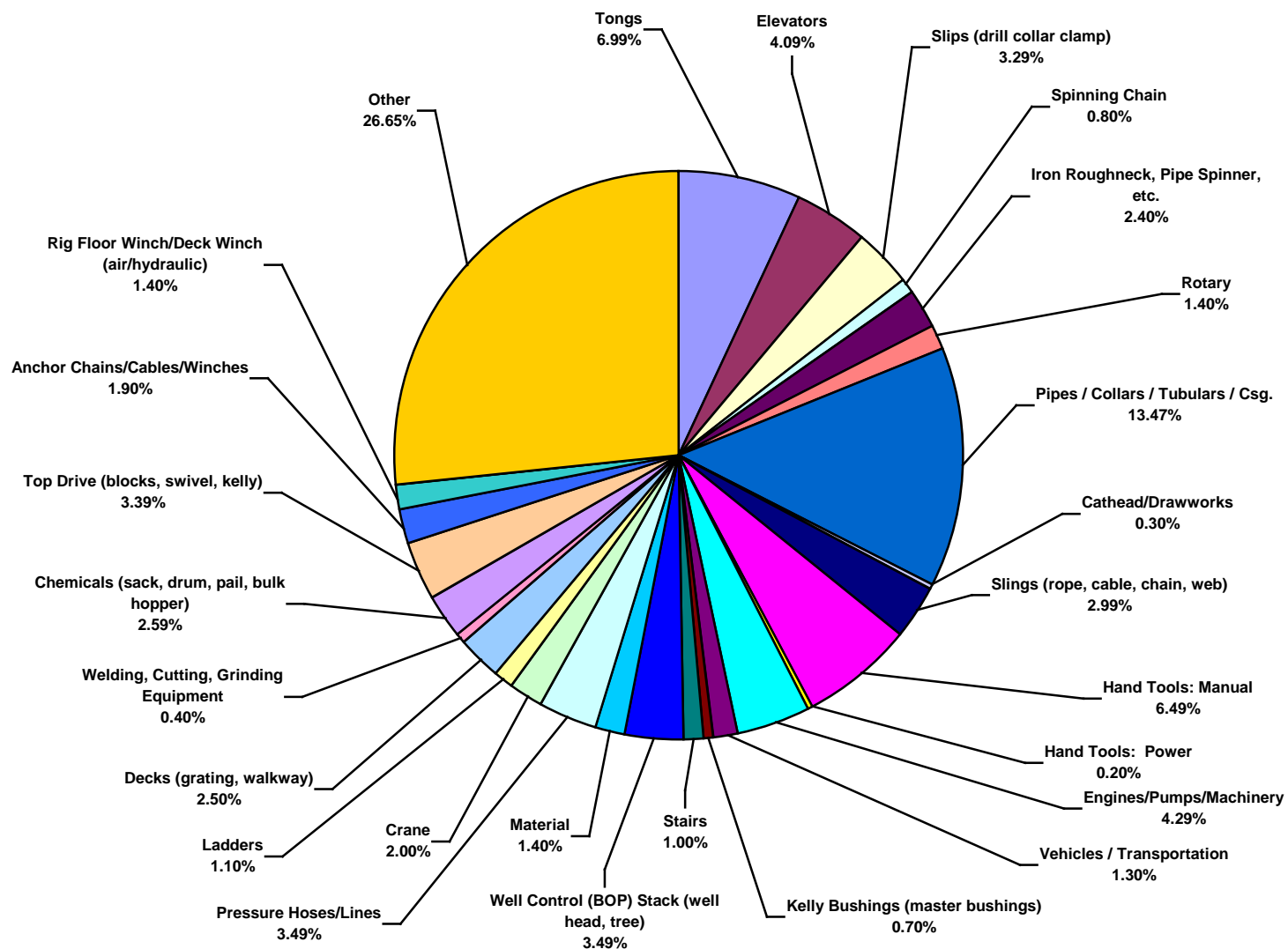


US Land Total Lost Time Incidents by Equipment (Chart 9)
Based on 253 Incidents



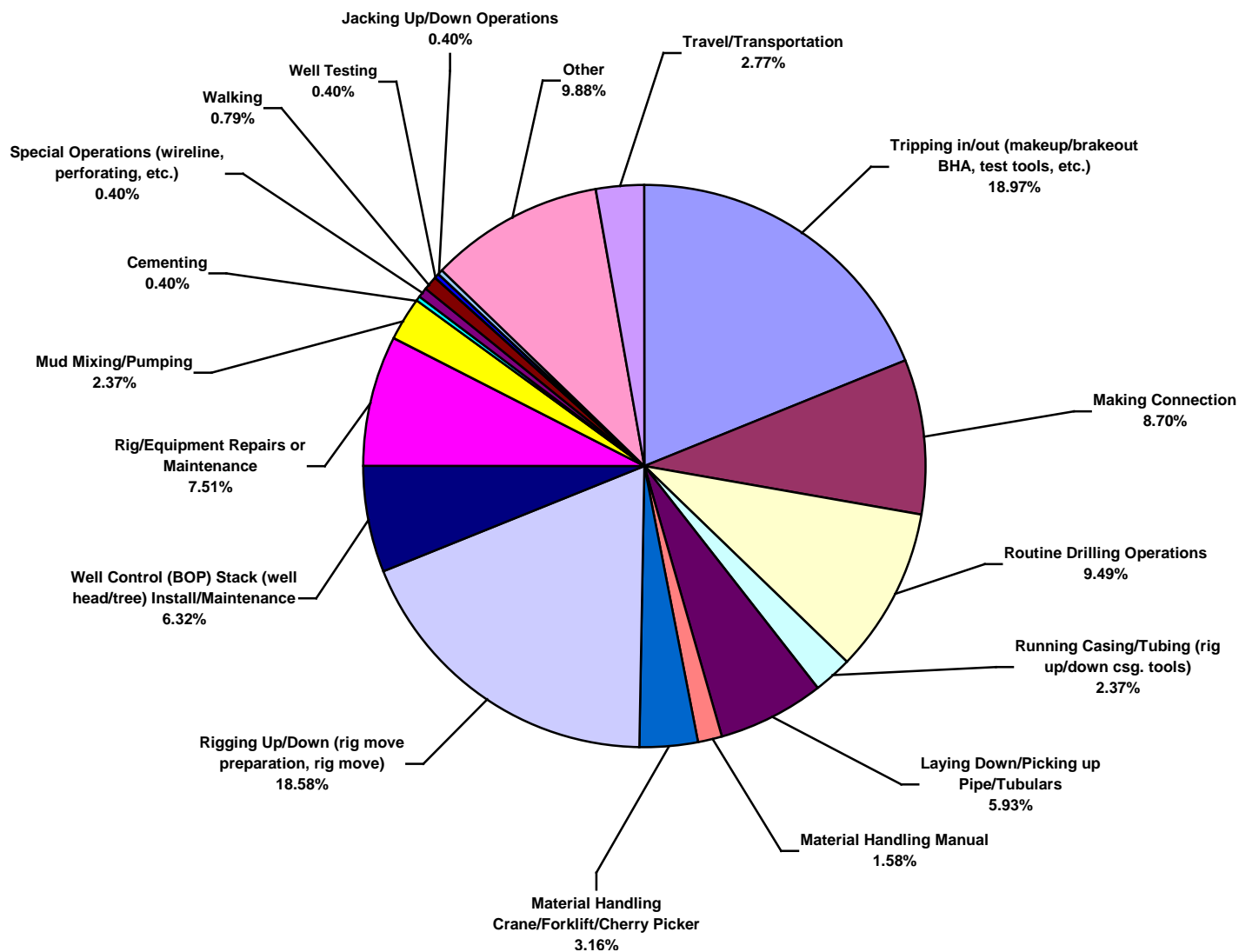


US Land Total Recordable Incidents by Equipment (Chart 10)
Based on 1002 Incidents



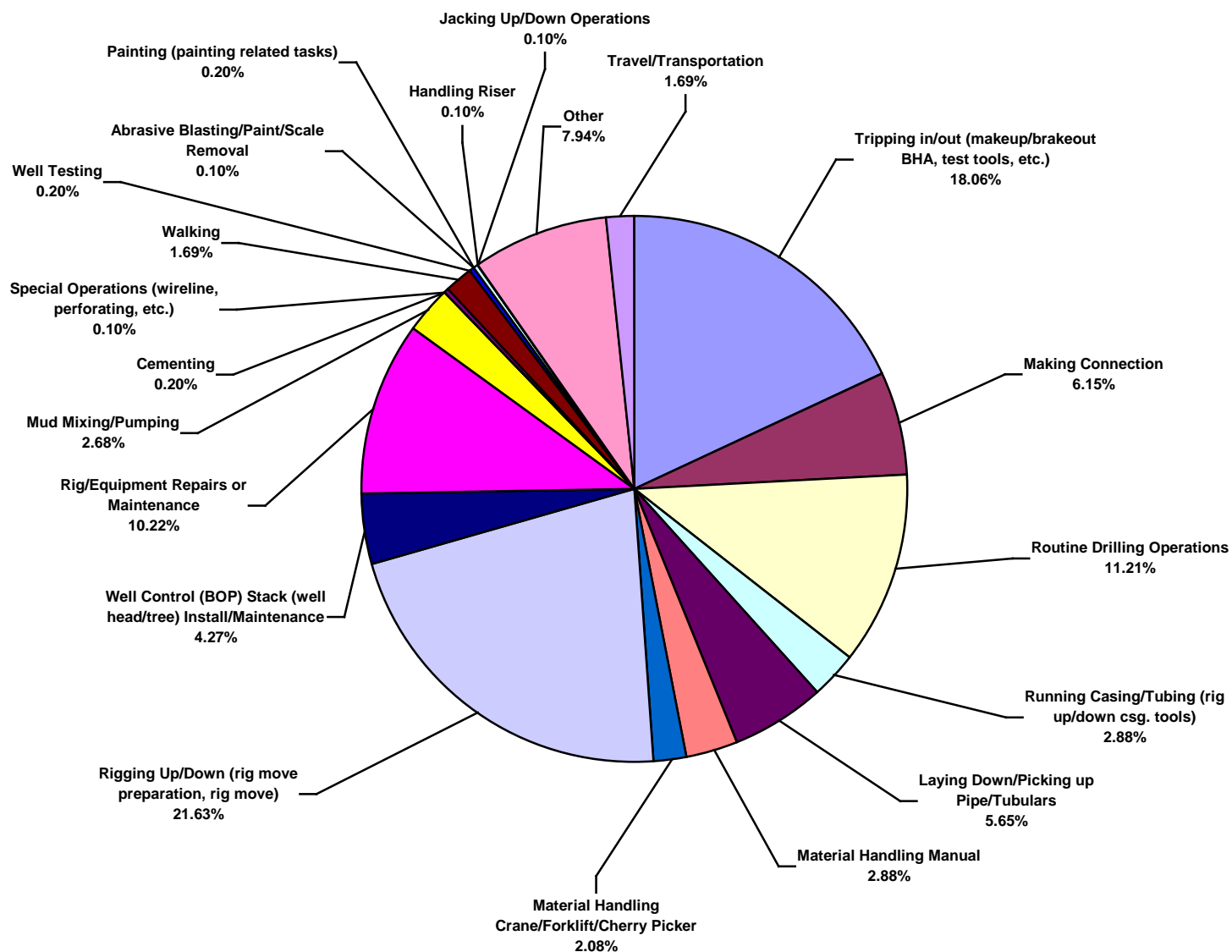


US Land Total Lost Time Incidents by Operation (Chart 11)
Based on 253 Incidents



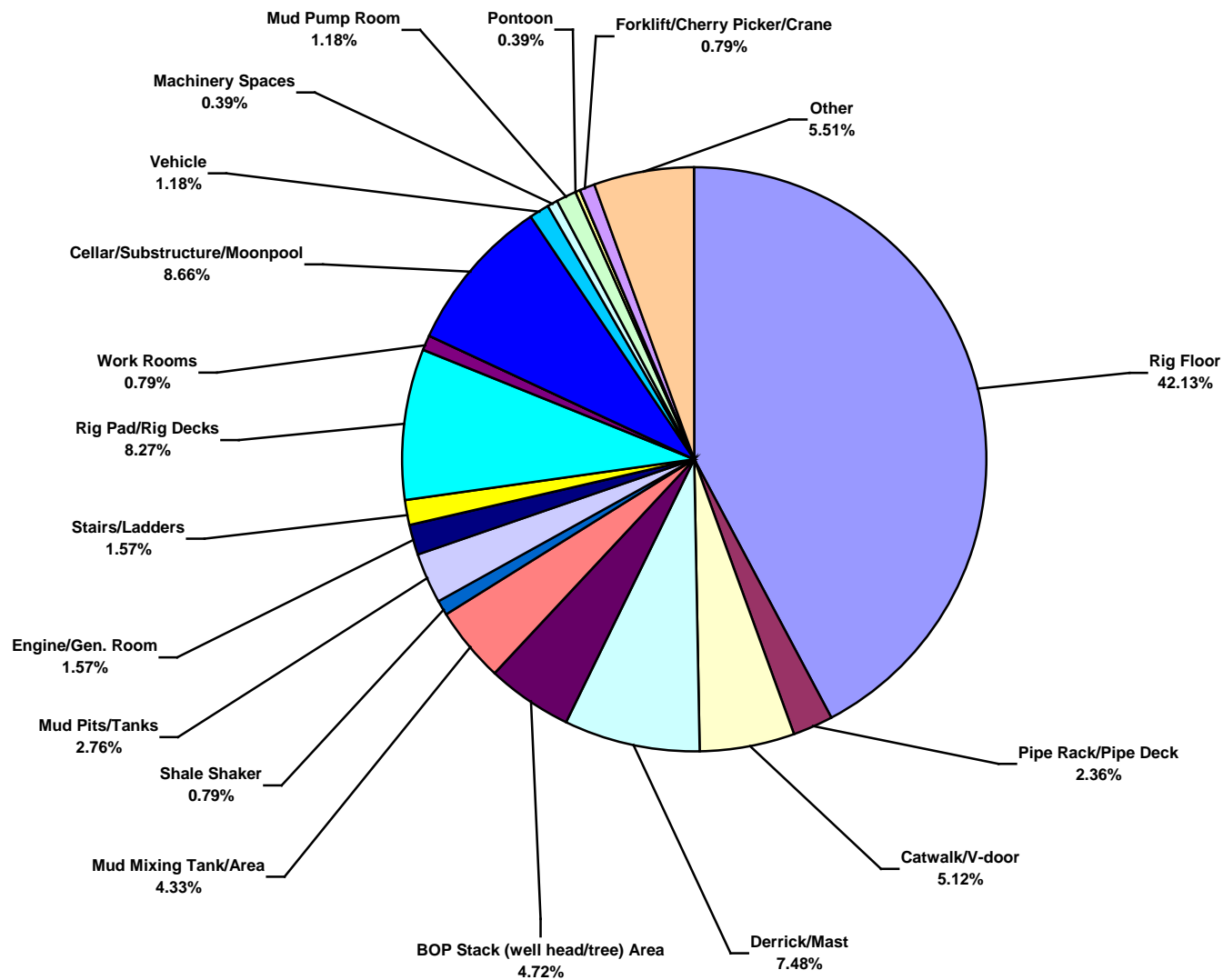


US Land Total Recordable Incidents by Operation (Chart 12)
Based on 1008 Incidents



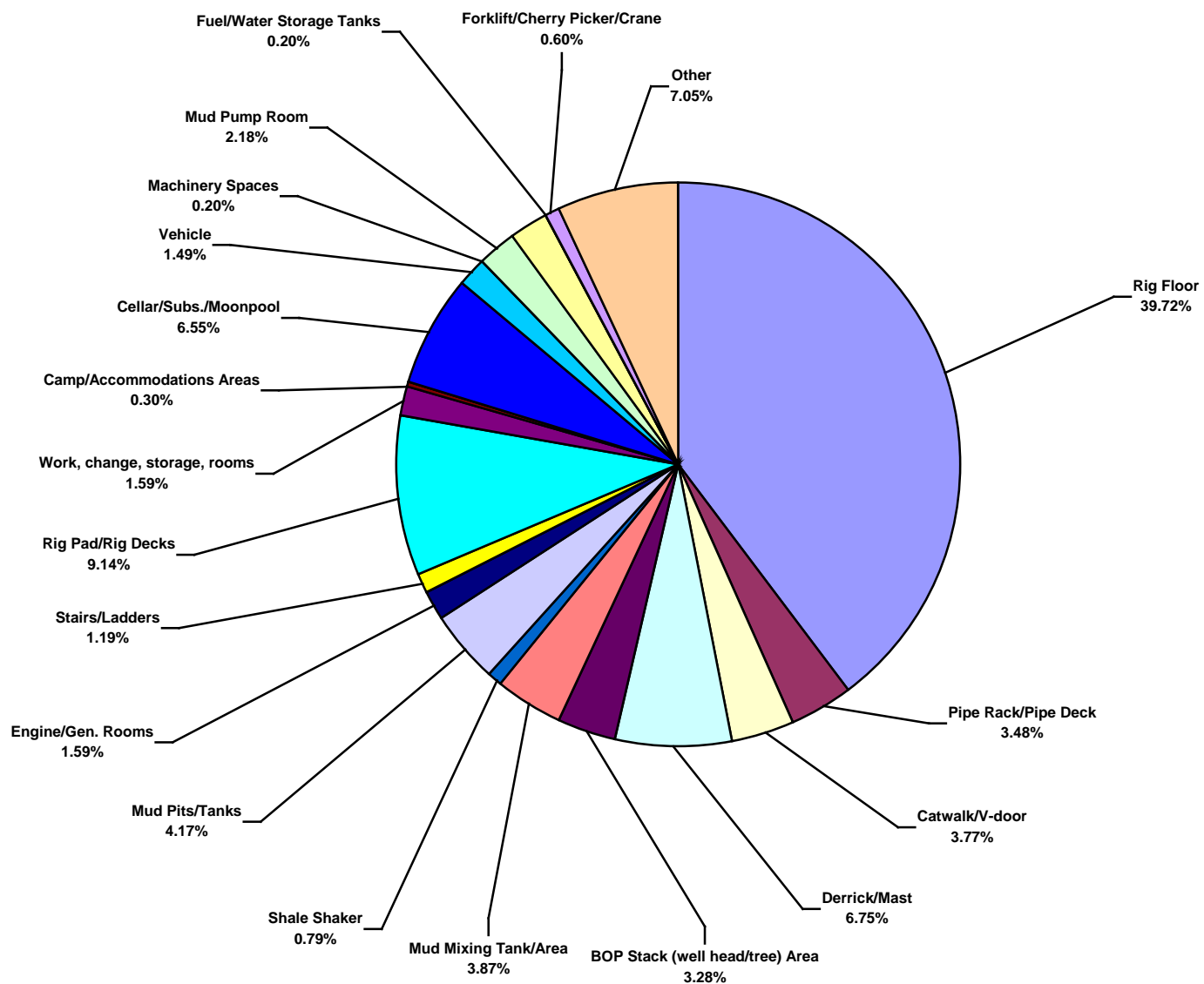


US Land Total Lost Time Incidents by Location (Chart 13)
Based on 254 Incidents



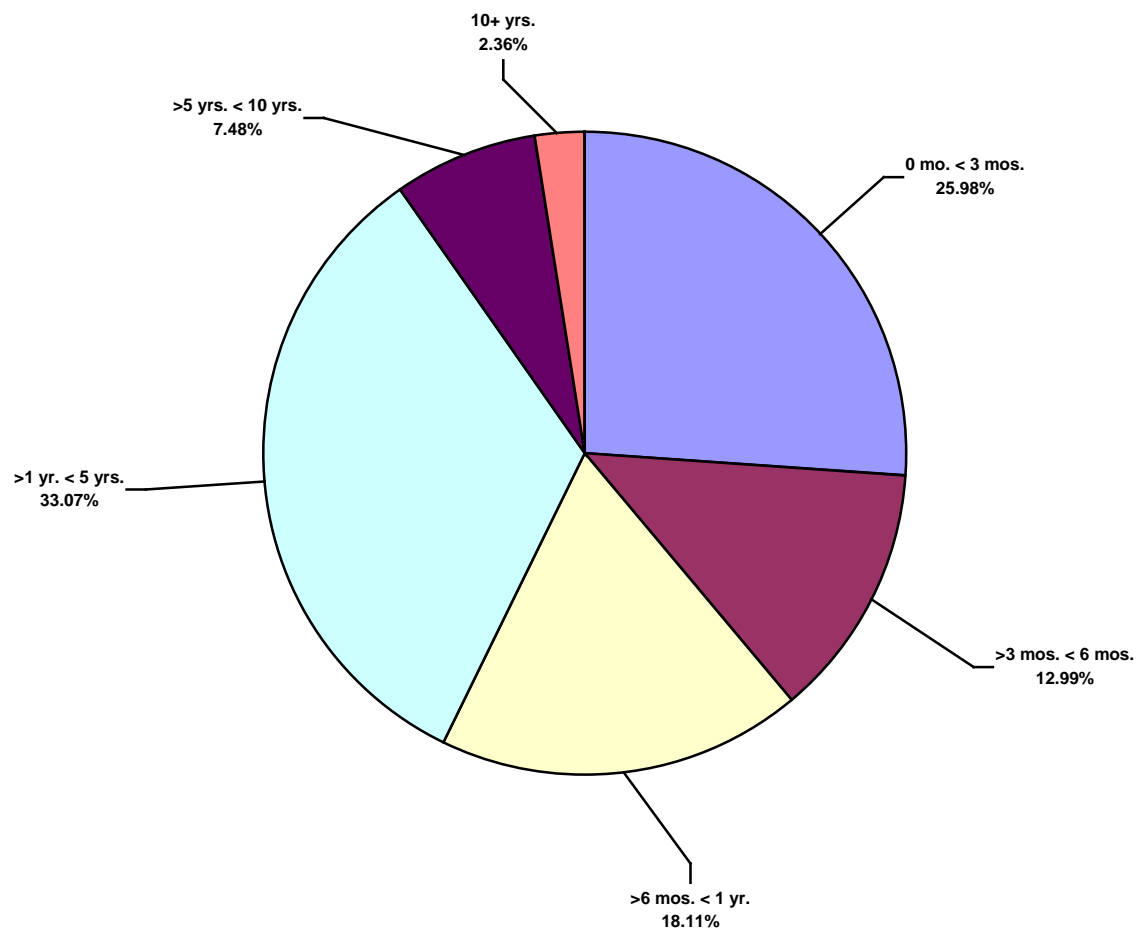


US Land Total Recordable Incidents by Location (Chart 14)
Based on 1007 Incidents



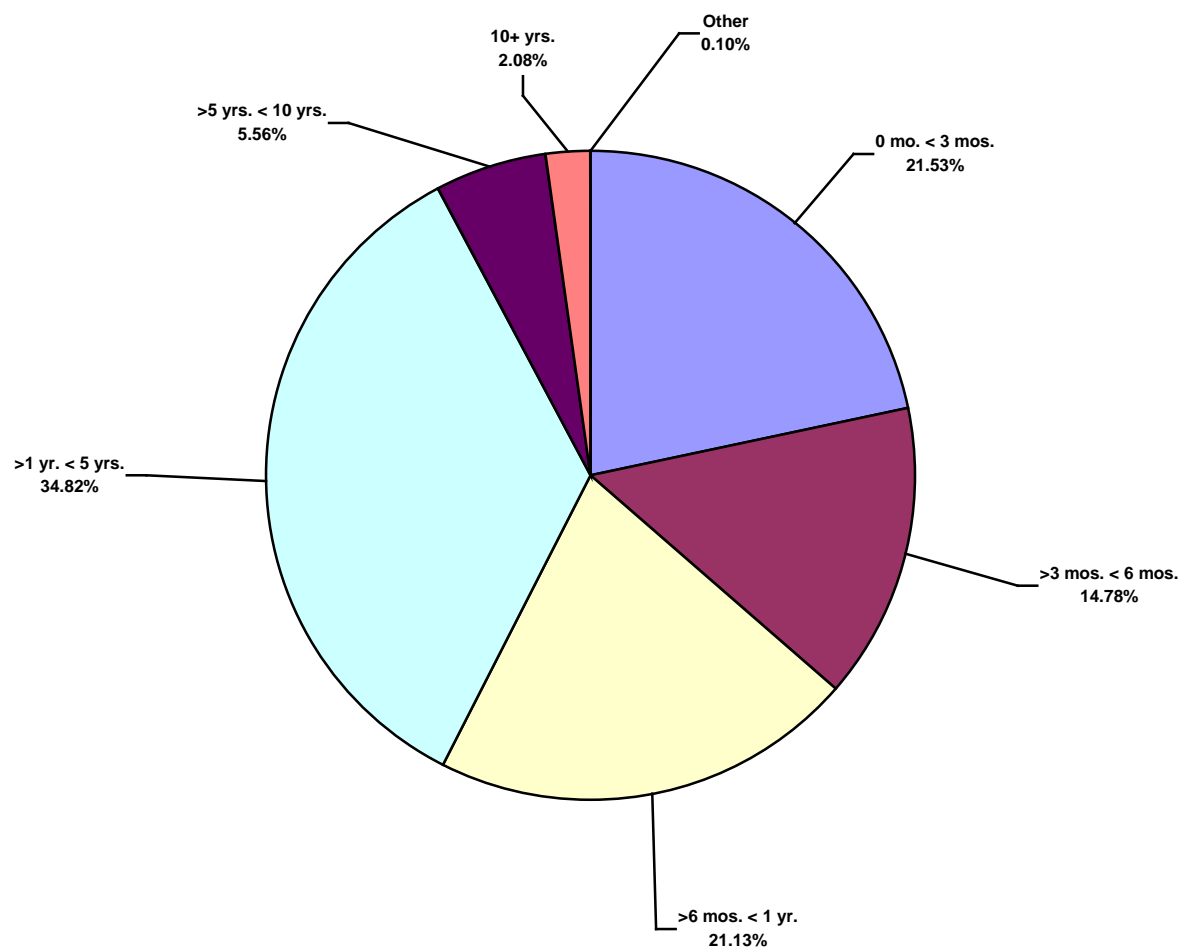


US Land Total Lost Time Incidents by Time in Service (Chart 15)
Based on 254 Incidents



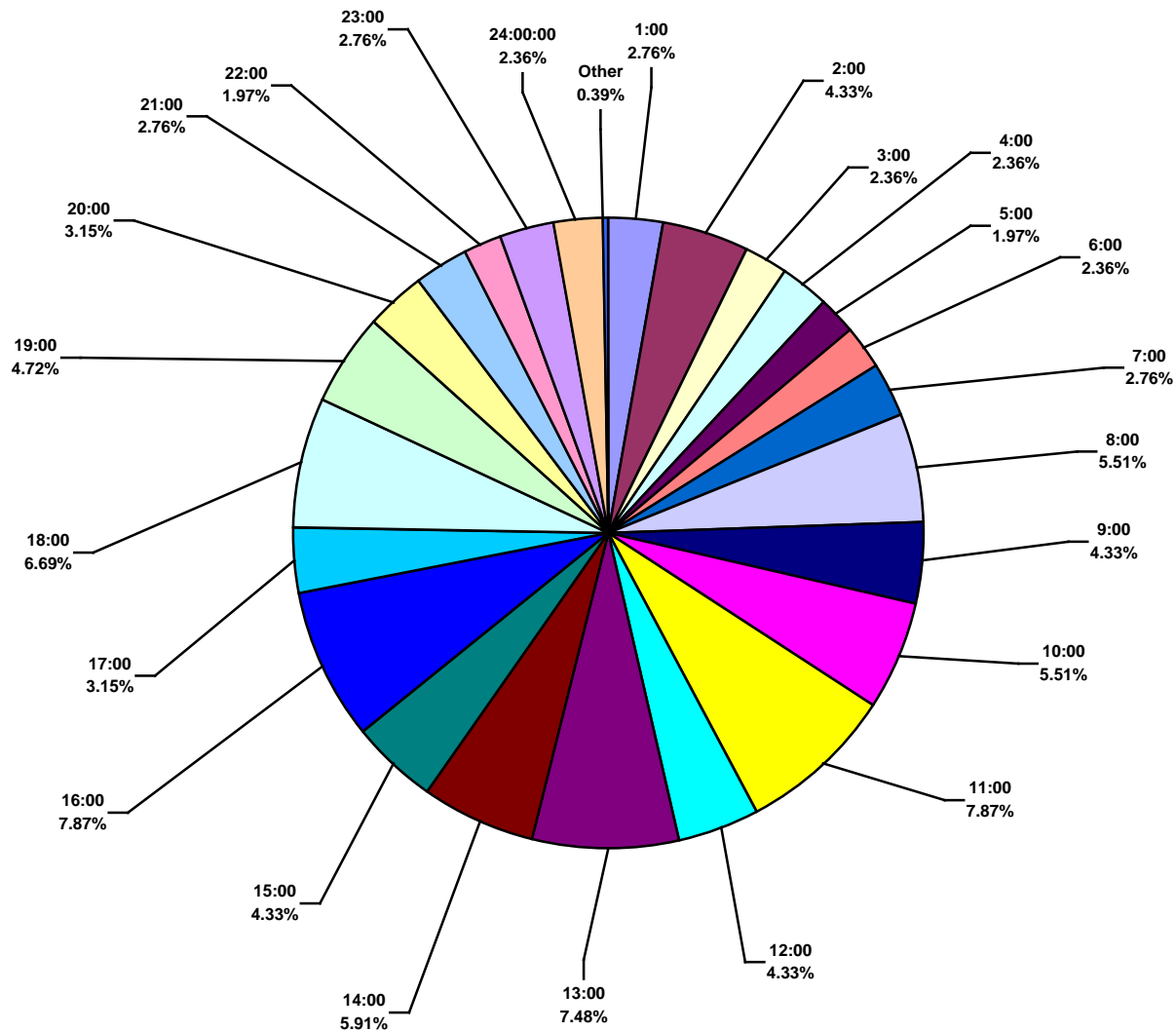


US Land Total Recordable Incidents by Time in Service (Chart 16)
Based on 1008 Incidents





US Land Total Lost Time Incidents by Time of Day (Chart 17)
Based on 254 Incidents





US Land Total Recordable Incidents by Time of Day (Chart 18)
Based on 1002 Incidents

