



# DELEGACIA DA CAPITANIA DOS PORTOS EM MACAÉ



**RICARDO CESAR  
BRAZILIAN NAVY COMMANDER**



# SUMMARY

- 1.0 Presentation goal**
- 2.0 Maritime Authority Structure Graphic**
- 3.0 DeMacaé Mission**
- 4.0 DeMacaé Tasks**
- 5.0 Jurisdiction area**
- 6.0 DeMacaé Structure Graphic**
- 7.0 Temporary Inscription Attestation/Minimum Safe Manning Document/discrepancies items**
- 8.0 Statistics Data**
- 9.0 Conclusion**



## 1.0 – GOAL

**To present Delegacia da Capitania dos Portos em Macaé & the main activities accomplished as a BRAZILIAN MARITIME AUTHORITY AGENT.**



# BLUE AMAZON

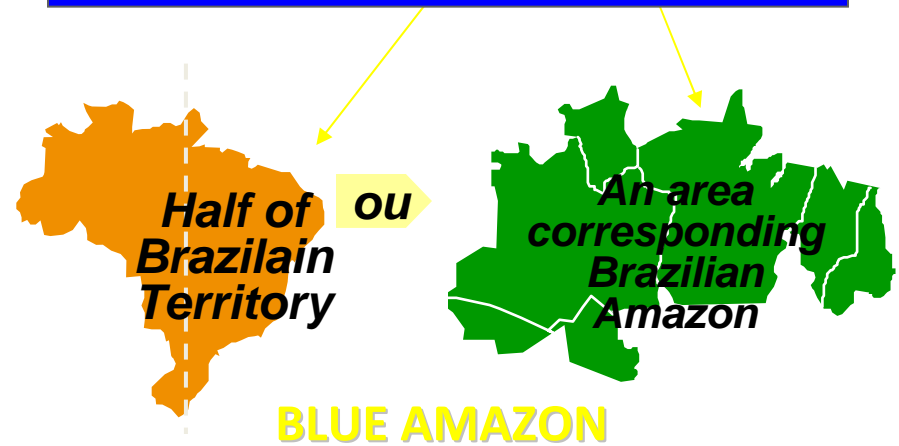
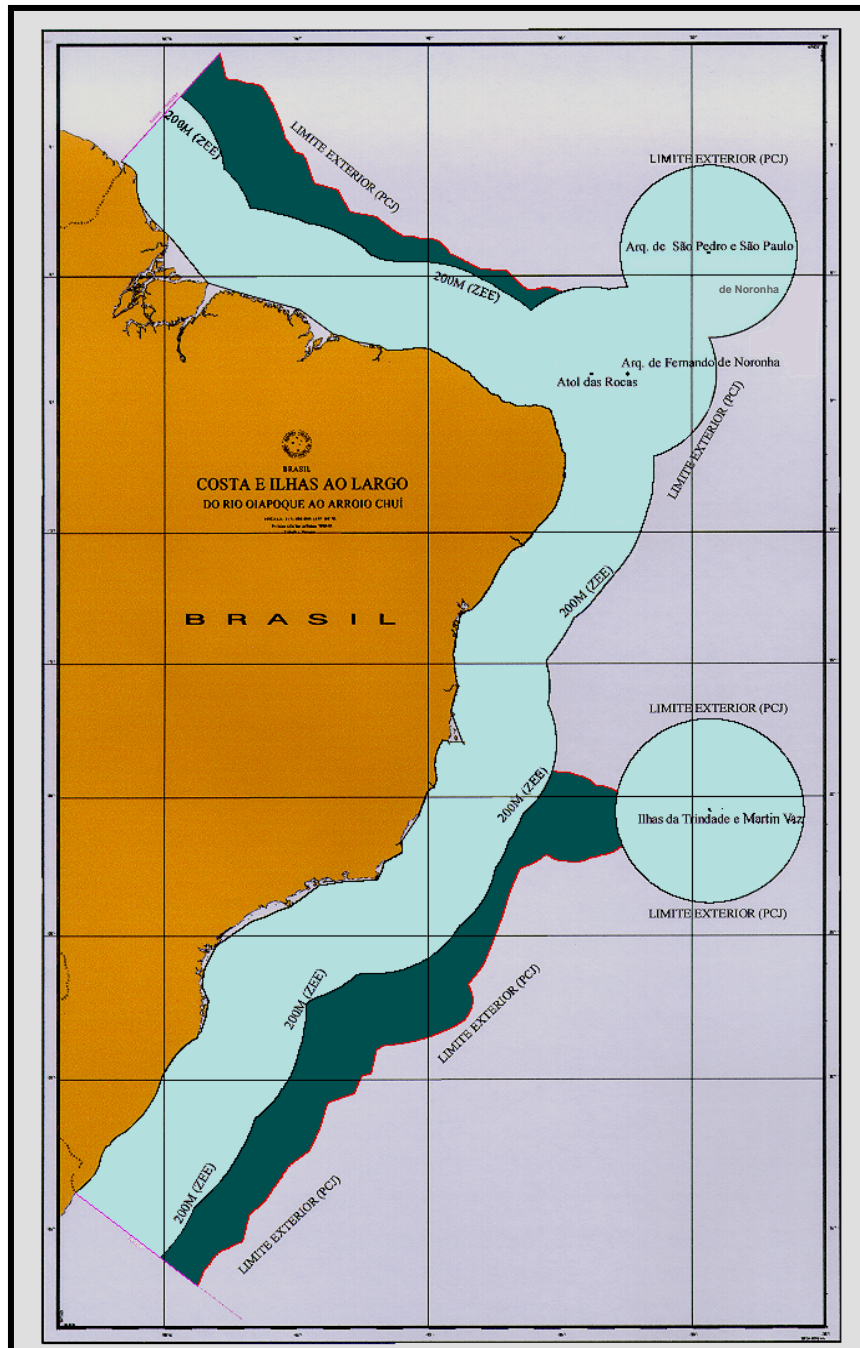




## BLUE AMAZON CONCEPT

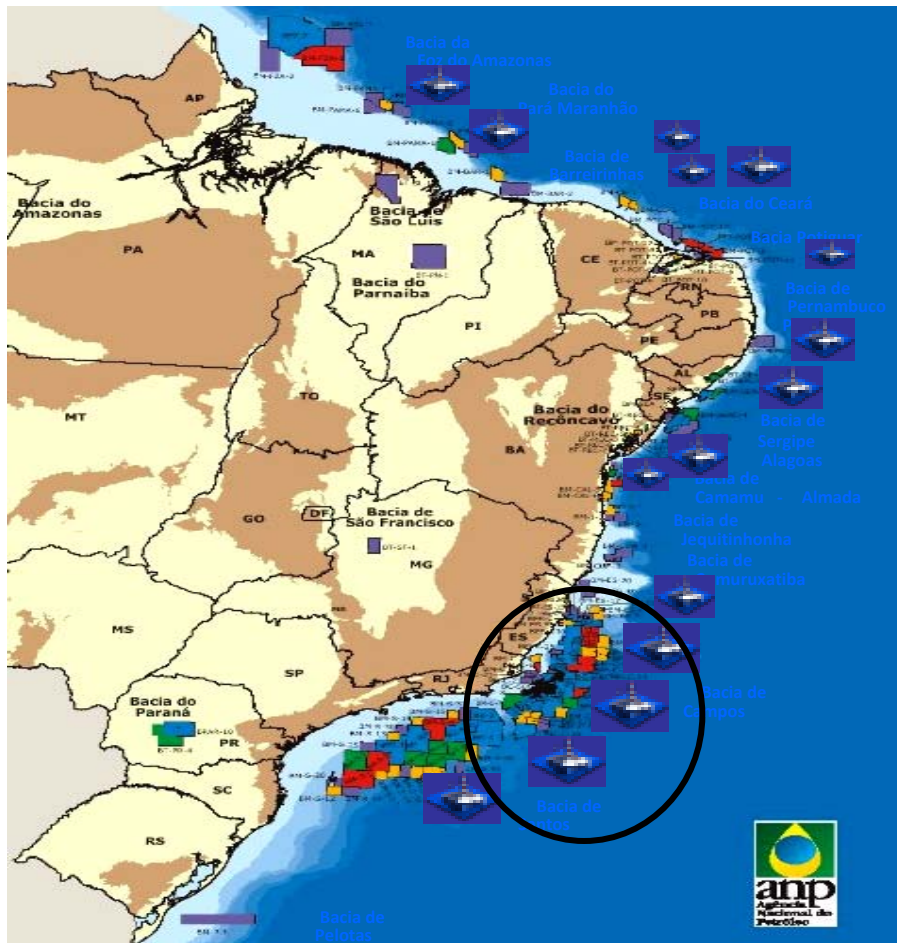
In 2004 BRAZIL made a submission to the Commission on the Limits of the Continental Shelf (CLCS), pursuant to UNITED NATIONS Convention on the Law of the Sea of 10 December 1982. The submission contains the information on the proposed outer limits of the continental shelf of Brazil beyond 200 nautical miles from the baselines from which the breadth of the territorial sea is measured. Once approved it will represent an increase area with 911.000 square km on the exclusive economic zone reaching 4,5 square million kilometers. An area rather big and important as world most famous jungle AMAZON. That is why the vast sea area (EEZ) is called BLUE AMAZON.

# SOUTH ATLANTIC BRAZILIAN WATERS JURISDICTION





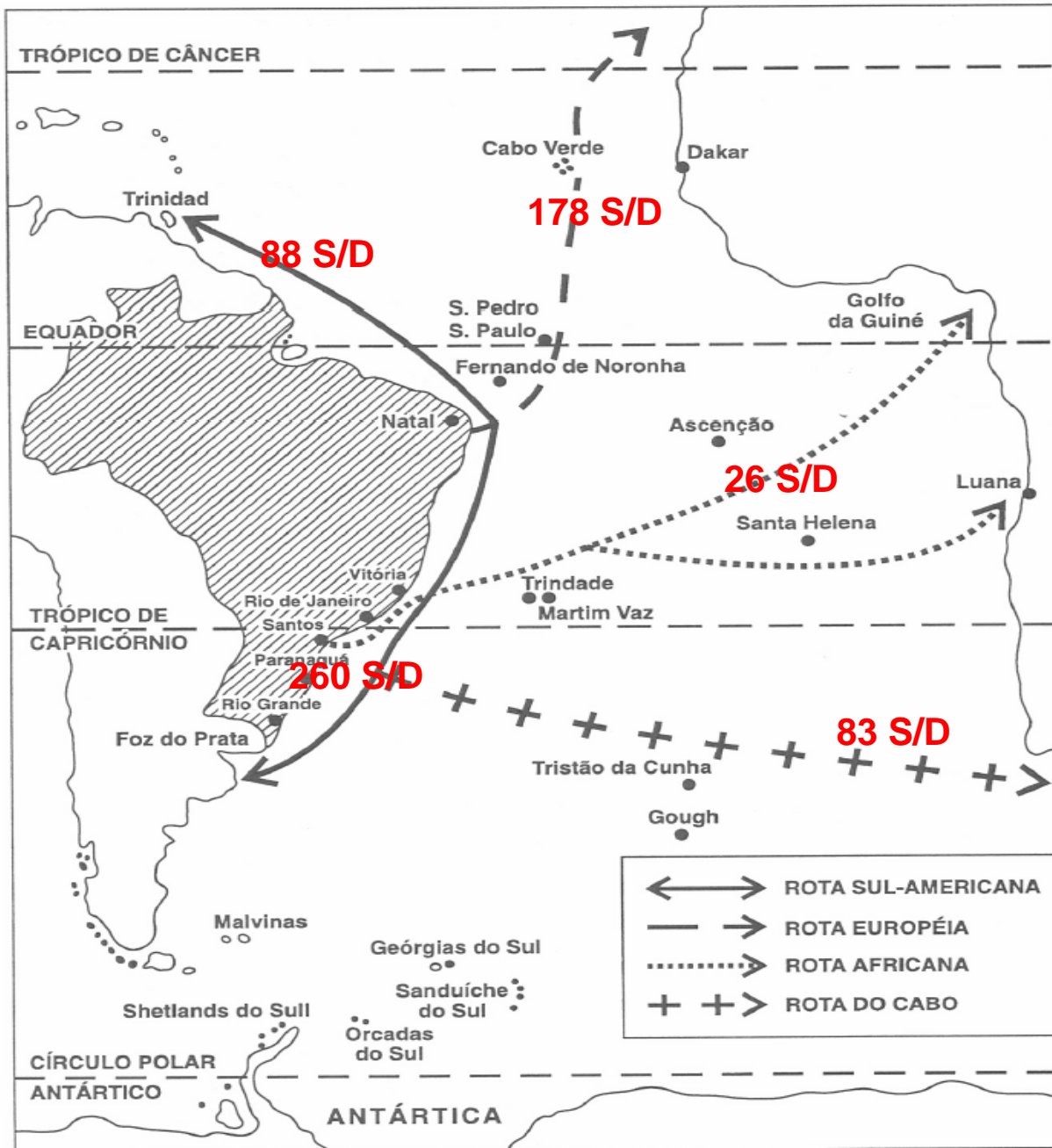
# OFFSHORE RIGS - BRAZILIAN SEA COAST



**90% NATIONAL PRODUCTION**

**1.960.000 BARRILS/DAY**





**Maritime Exchange  
500 Merchant Ships/Day**

**Over 95% of the Brazilian international trade relies on maritime transport. Over US\$ 159.3 billions in 2004 & US\$ 191,8 billions in 2005.**

**Foremost Sea Lines Exchanges**



**SOVEREIGNTY**



**OIL**



**MARITIME TRANSPORT**



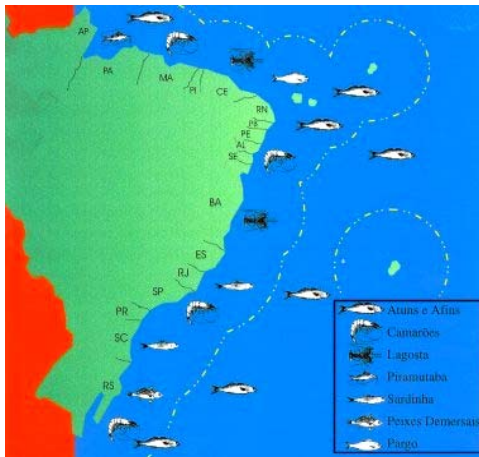
**HARBOURS**



**NAVIGATION SAFETY**



**PIRACY AND ARMED ROBBERY**



**FISHING**



**ENVIRONMENT**

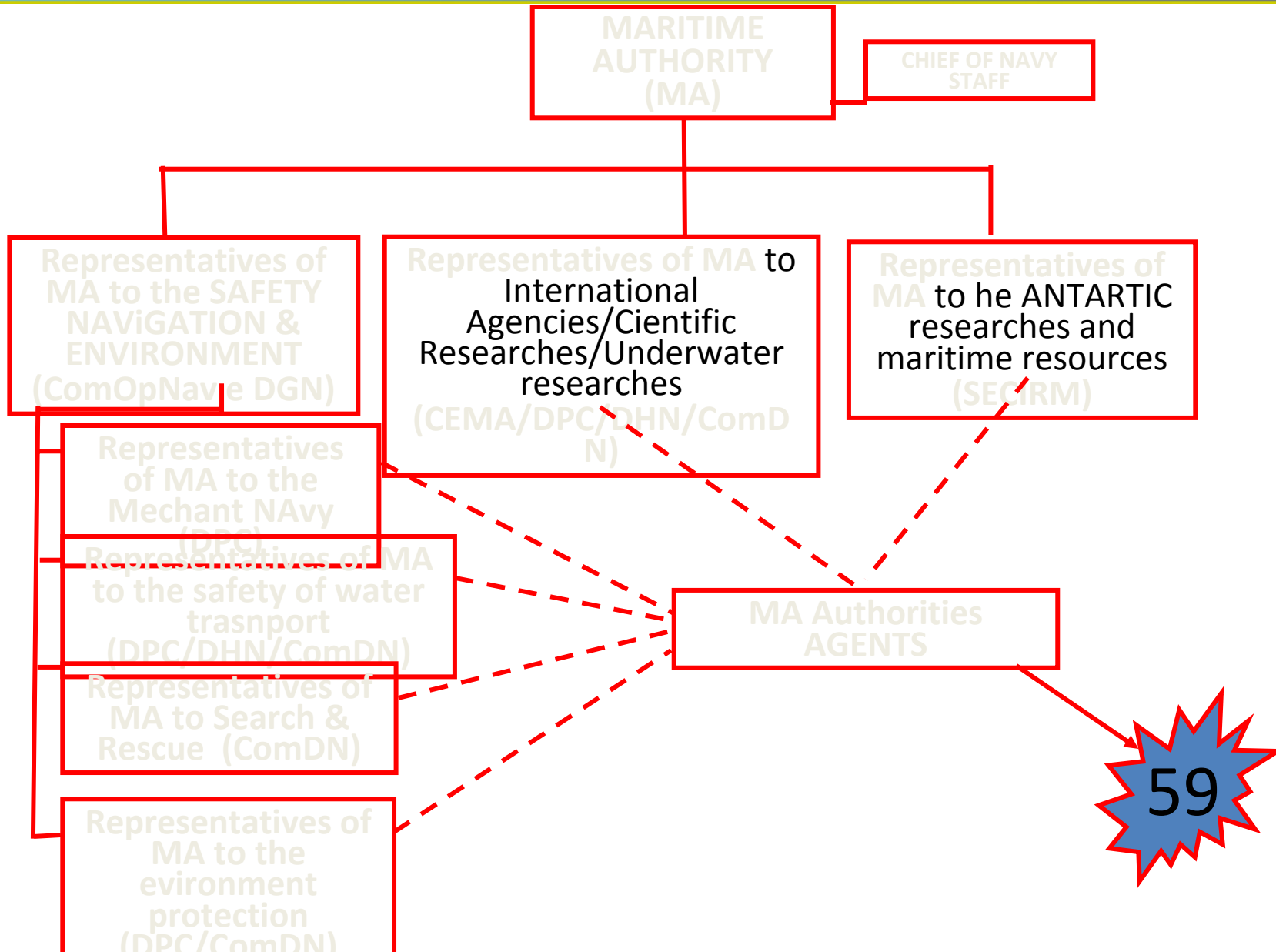


**TERRORISM**



## 2.0 – MARITIME AUTHORITY STRUCTURE FIGURE

(Port. 156/MB de 3JUN2004)





## 3.0 – DelMacaé Mission

**Supervise and inspect Merchant Navy and other co-related organizations with regard navigation safety and national security.**



## 4.0 – MAIN TASKS

**I – Fulfill and reinforce laws, acts and doctrines both national and international, with regard maritime, riverine and lacustrine traffic;**

**II – Supervise Pilot services;**

**III – Supervise on water traffic, (administrative activity, in compliance with Maritime Safety Navigation Law, derived doctrines, national and international convention and treats, ratified by Brazil and also on environmental laws against pollution caused by maritime, riverine or lacustrine terminals or boats);**



## 4.0 – MAIN TASKS

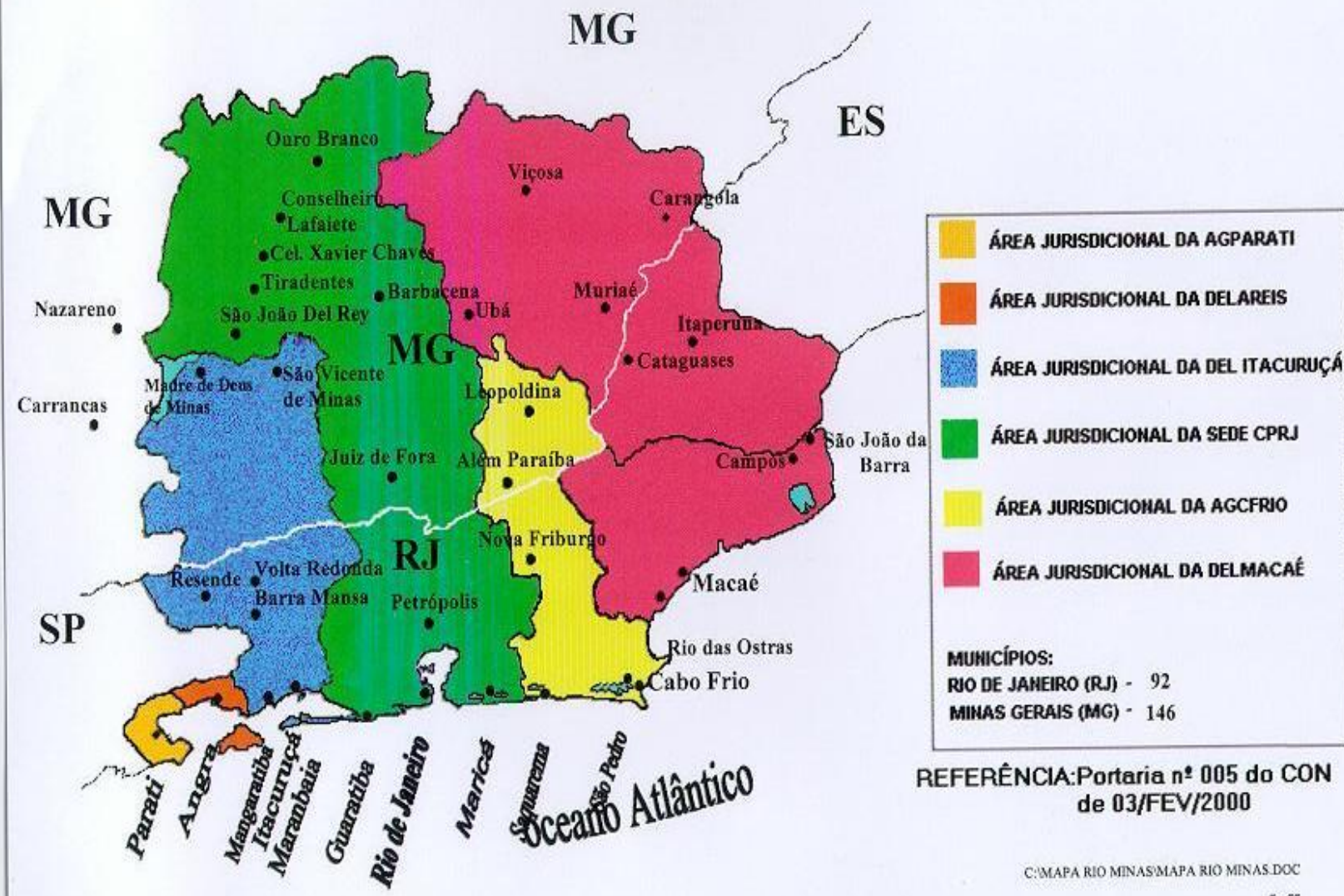
**IV – Auxiliary on maritime salvage service;**

**V – Concourse to supervise nautical signals aids maintenance;**



# 5.0 – JURISDICTION AREA

anexo  
I-A



segunda-feira, 7 de dezembro de 2009 -

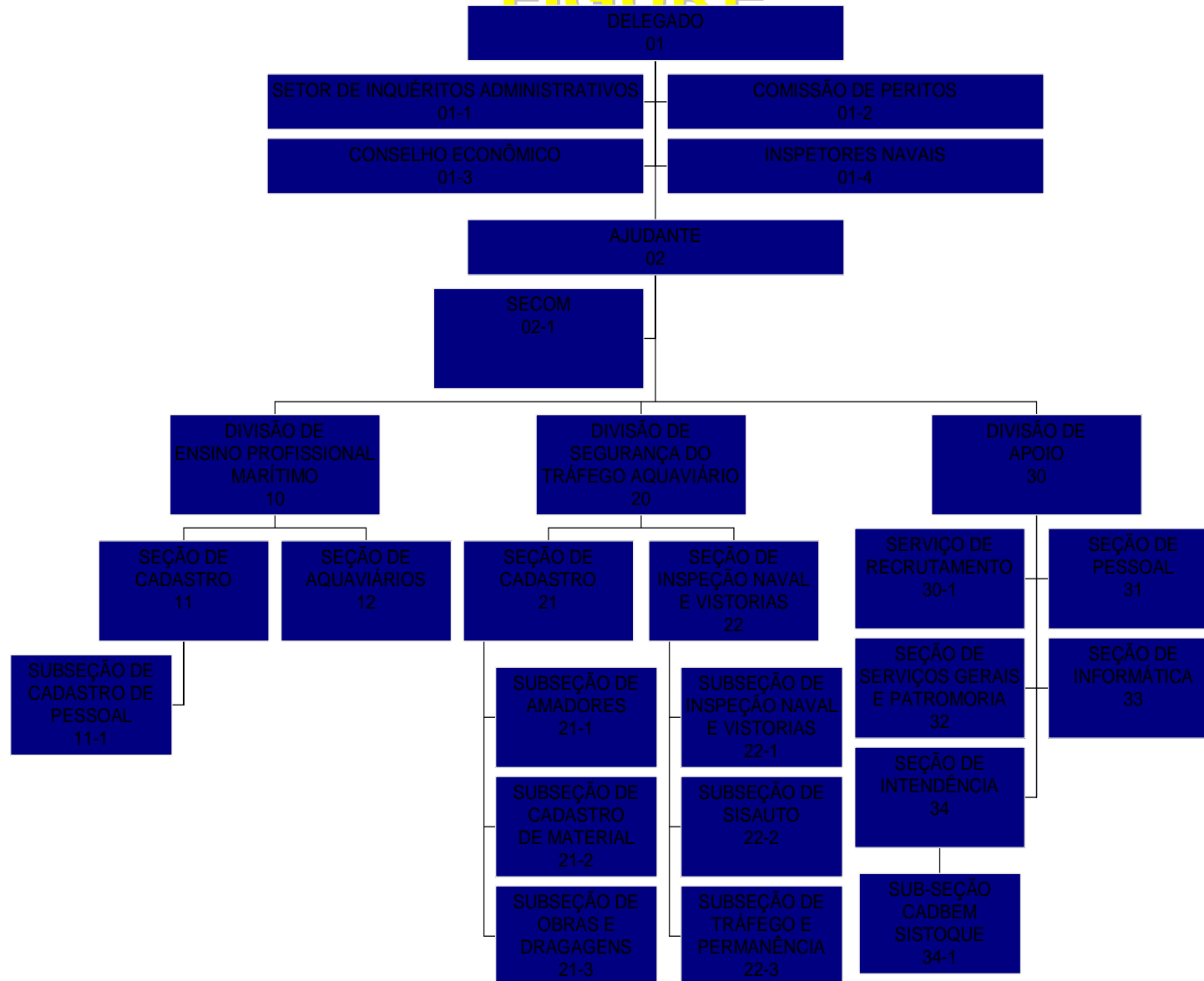


## 5.1 – JURISDICTION AREA

**The jurisdiction area of Macaé's Harbour Master Delegation includes 72 cities, over Rio de Janeiro (27) and Minas Gerais States (45).**



# 6.0 – MACAÉ'S HARBOUR MASTER FIGURE





## 7.0 – DOCUMENTATION ISSUE



Ocean Quest

RIGZONE

segunda-feira, 7 de dezembro de 2009 -



## 7.1 TEMPORARY INSCRIPTION ATTESTATION

**What is TIA?**

**It's the authorization that a foreign flag vessel freighter, under contract to operate on Brazilian Jurisdiction Waters (BJW), shall require to any Brazilian Maritime Authority Agent, such as Macae, in order to obtain authorization before starting the operation;**

**➤ Postponing TIA: TIA can be postponed successively until the end of the activities on BJW.**